

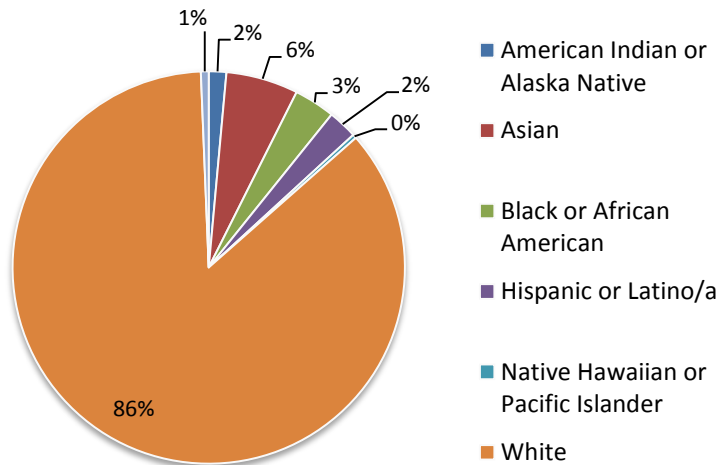


Teacher Education at St. Cloud State University

About our Candidates

The following data is collected every semester from candidates entering introduction to education courses at SCSU. Candidates typically enroll in this course in their sophomore or junior year. These charts represent the responses of students entering our programs in the four semesters from Spring 2012 to Fall 2013.

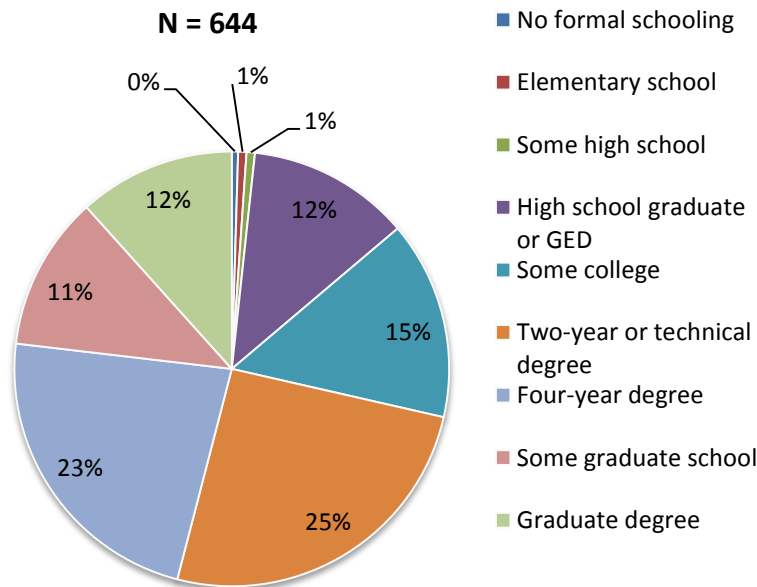
Race/ethnicity
N = 622



Race/ethnicity:

Currently 86% of our teacher education candidates are white. SCSU is committed to increasing the number of teachers of color prepared in Central Minnesota, and is in the midst of a collaborative effort with public school partners to recruit and retain teachers of color in our programs.

Highest level of education completed by parents or guardians
N = 644



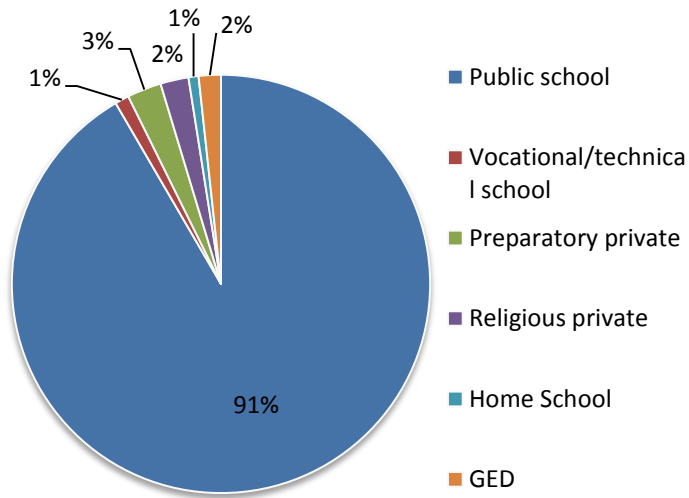
Level of Education of Parent/Guardian:

About half of our teacher candidates come from families in which the parents/guardians do not have a four-year degree. We are proud of our reputation as an affordable center of quality education and strive to continue to reach out to first generation college students.



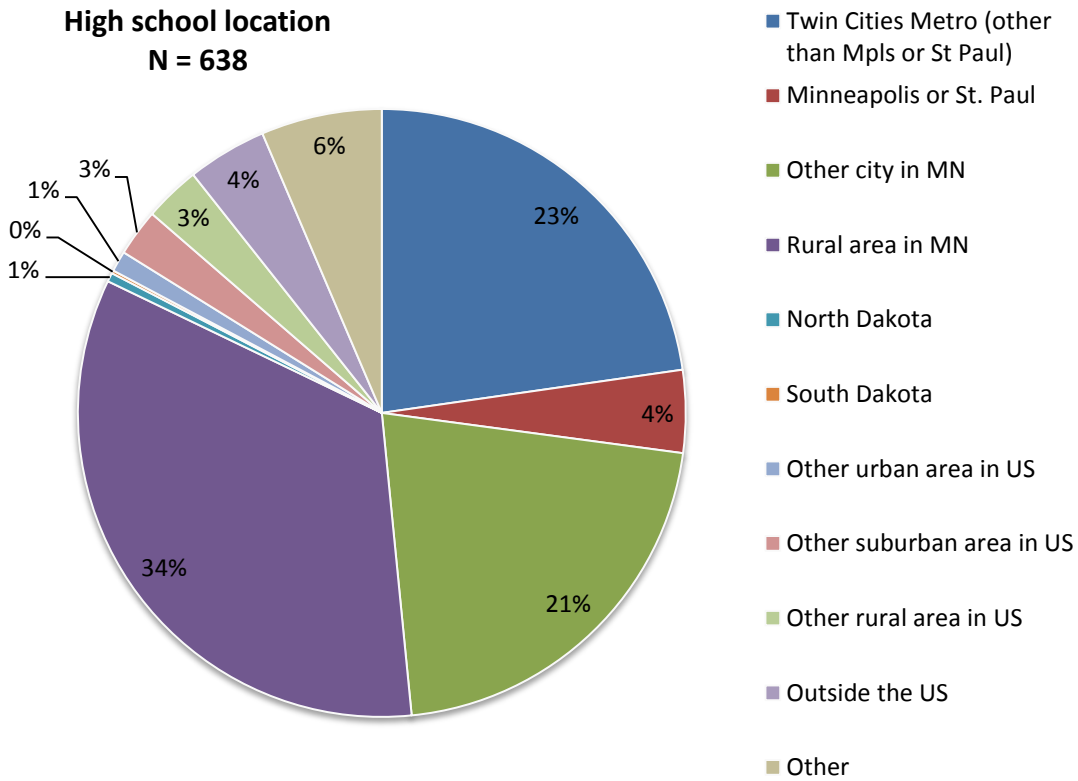
Teacher Education at St. Cloud State University

Type of high school attended
N = 643



High school attended:
The vast majority of our candidates attended public high schools in Minnesota.

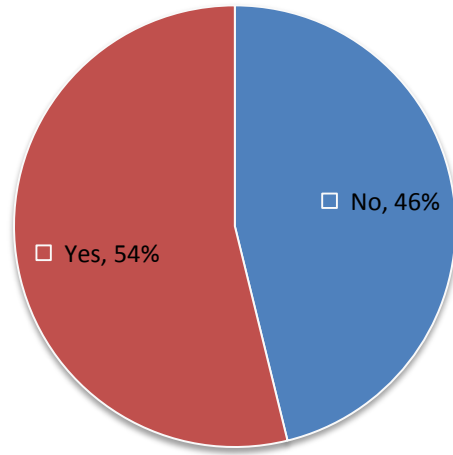
High school location
N = 638





Teacher Education at St. Cloud State University

Attended another college or university
N = 548



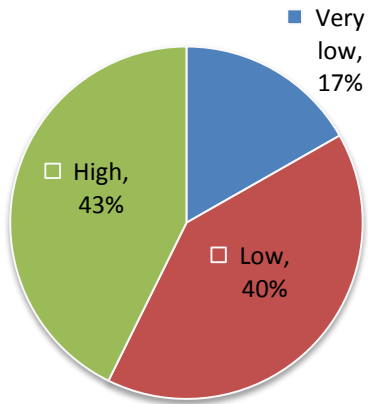
Transfer Students:
Over half of the candidates entering our programs had previously been enrolled in courses at another college or university.



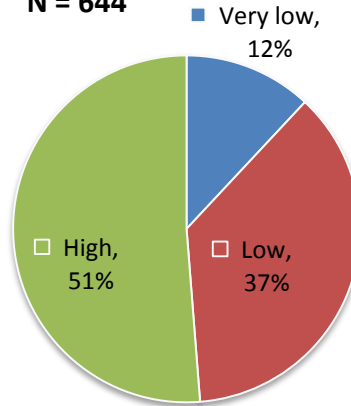
Teacher Education at St. Cloud State University

Areas of Academic Interest: Our candidates have a wide variety of academic interests.

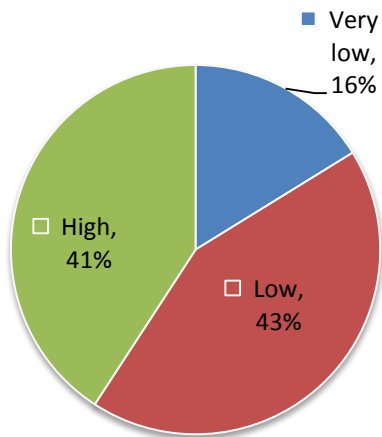
Mathematics
N = 644



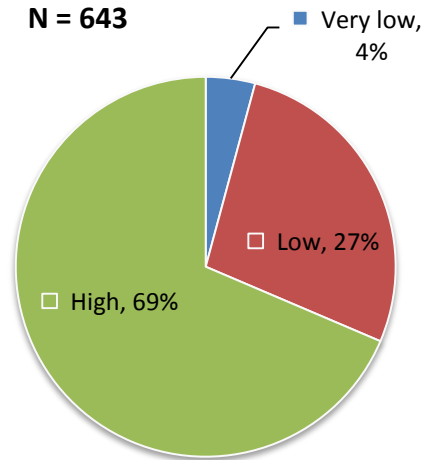
Sciences
N = 644



Technology
N = 642



Language Arts and Literacy
N = 643

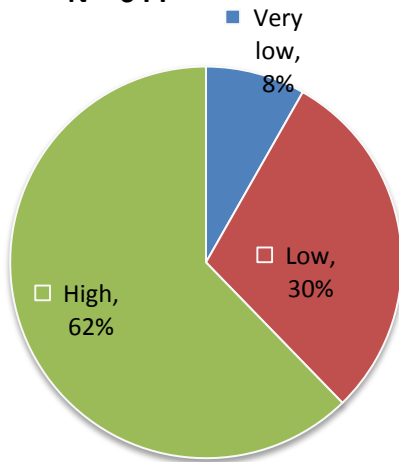




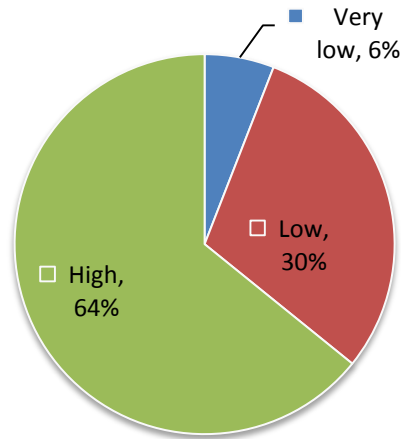
Teacher Education at St. Cloud State University

Areas of Academic Interest: Our candidates have a wide variety of academic interests.

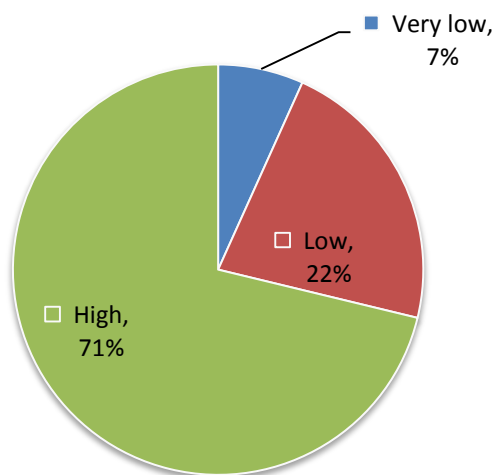
Fine Arts
N = 644



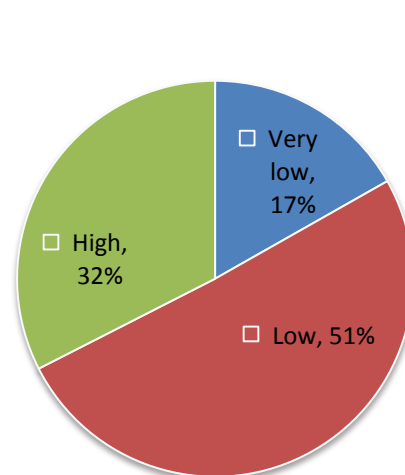
Social Sciences
N = 642



Health, Physical Education, Sport Sciences
N = 549



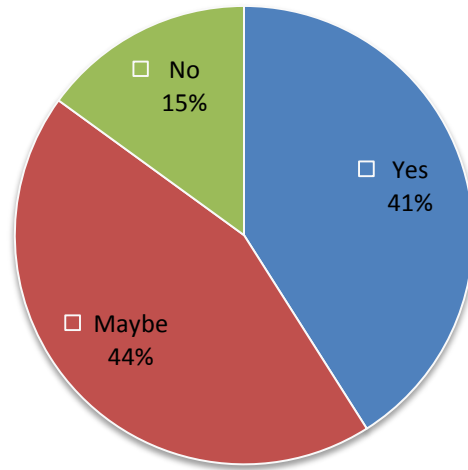
Business and Commercial Enterprises
N = 643





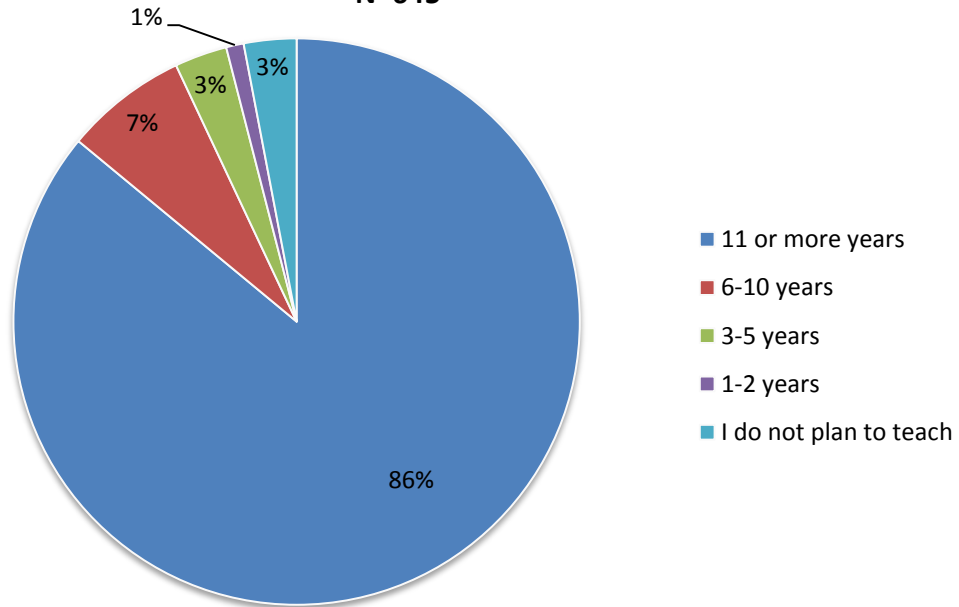
Teacher Education at St. Cloud State University

Hope to teach within 50 miles of hometown
N=645



Career Aspirations: The majority of our candidates are likely to pursue teaching positions within 50 miles of their hometown, and plan to teach for at least 11 years.

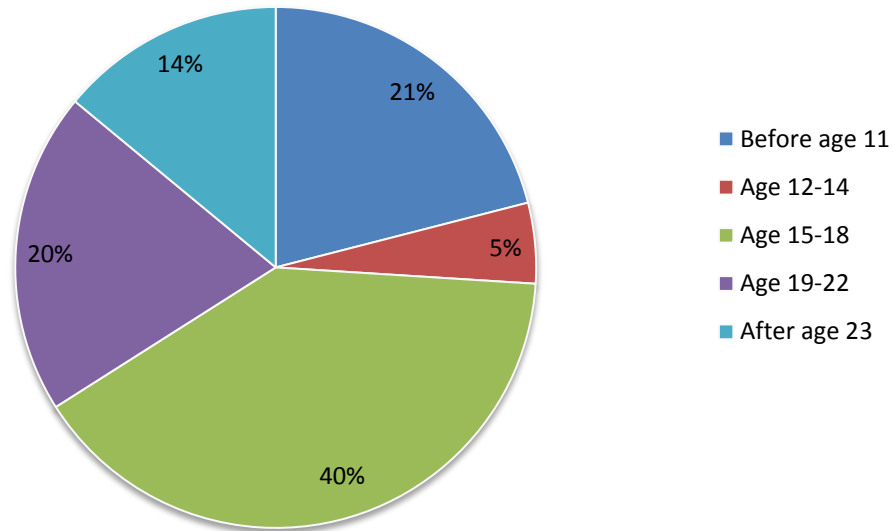
Length of time planning to teach
N=645





Teacher Education at St. Cloud State University

Age when first interested in teaching
N=220



Interest in Teaching: A new question we have begun to explore is at what point in your life did you first think of becoming a teacher? These results only reflect one semester of entering candidates, but show that the majority of our students think about becoming a teacher before they enter college.