

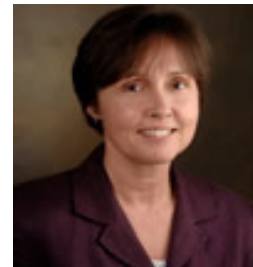
School of Health and Human Services Newsletter
February 2014

Issue No. 3: 3

Hello everyone,

Welcome to the winter that never seems to end. Our faculty and students are well into “spring” semester and I hope some warm weather is just around the corner.

Since our last newsletter, we’ve been very busy in the school completing our strategic planning. I anticipate approval of our strategic plan in March. We have completed plans to secure a permanent location for the Dean’s office and we are hopeful that we’ll be ready to move into permanent space in Brown Hall later this year.



We are very busy with faculty searches this semester. Tenure-track searches have been authorized and are ongoing in the Departments of Nursing Science, Counseling, Community Psychology and Family Therapy and Communication Science and Disorders. We are also conducting fixed term faculty searches in Kinesiology and Social Work.

Our faculty continue to engage in significant work in our local community - with United Way, the Greater St. Cloud Development Corporation, the St Cloud Community Priorities and CentraCare Health Systems. We are part of the Flourishing Campus 2020 initiative - an interdisciplinary project that is being presented to senior administration and I hope we’ll be able to move forward on this work in Summer 2014.

We have welcomed guests from overseas to our departments (it’s been a great time to visit MN, right?). Guests have arrived from South Africa, Turkey and Chile. I hope to travel to the Universidad de Concepcion later this spring to explore options to strengthen and expand our wonderful partnerships with their programs.

Our community partnerships are one of the hallmarks and strengths of our school. I want to thank all of our partners and we will be recognizing them and our student scholarship recipients later this semester - stay tuned for details.

I know that 2014 will be a strong year for SHHS as we live our mission and continue with our strategic initiatives. Thank you to all of our alumni and friends of SHHS. I am grateful for your support. Please stay in touch with us and if you are ever on campus, please stop by. Lunch or coffee is on me.

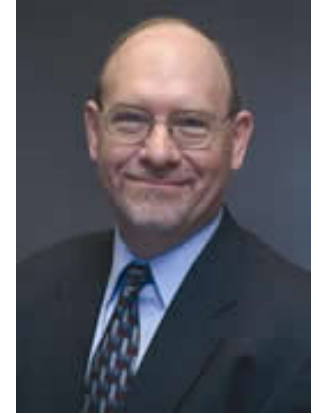
Best wishes to you all.

Monica C. Devers
Dean

SHHS SPRING COLLOQUIUM

Dr. Edward Ehlinger, MD, MSPH, will speak on Health Issues and Concerns in Central Minnesota on March 18th in the Atwood Ballroom.

Dr. Ehlinger, MD, MSPH, was appointed by Governor Mark Dayton to serve as Minnesota Commissioner of Health in January, 2011. Dr. Ehlinger is responsible for directing the work of the Minnesota Department of Health (MDH). The MDH is the state's lead public health agency, responsible for protecting, maintaining, and improving the health of all Minnesotans. Prior to his appointment, Dr. Ehlinger served as director and chief health officer for Boynton Health Service at the University of Minnesota. He was an adjunct professor in the Division of Epidemiology and Community Health at the University of Minnesota of Public Health and served as director of Personal Health Services for the Minneapolis Health Department.



The keynote address will begin at 9:30 followed by Community/Faculty Panel Discussion at 11:00 and Interdisciplinary Discussion at 12:30.

This event is free and open to the public. Classes are welcome to attend. Please contact Emily at eesimon@stcloudstate.edu to reserve space for your class.

DEPARTMENT NEWS

Communication Sciences and Disorders

The CSD faculty are currently busy reviewing graduate applications to their M.S. program. The department is nationally recognized for its outstanding graduate program and this year they have received 130 applications. The faculty anticipate an incoming graduate class in fall 2014 of approximately 15.

Community Psychology, Counseling, and Family Therapy

The Department of Community Psychology, Counseling, and Family Therapy has been working on a program review of the undergraduate Community Psychology and Chemical Dependency programs to ensure that our conceptual framework and curriculum aligns with emerging trends in the field, and with the SHHS and university vision and mission. Graduate faculty are in the process of reviewing graduate applications for their respective programs, with interviews occurring soon. Many faculty are presenting at professional conferences throughout the spring, including co-presenting with students at conferences. Faculty continue to involve undergraduate and graduate students in their research and involve students in submitting and publishing papers. Several faculty have submitted interdisciplinary Provost Action Grants.

Gerontology

Gerontology recently submitted a grant application to help support their upcoming Careers in Aging Week events (April 6-12, 2014). Planned CIAW events at SCSU include daily interactive presentations in Atwood Memorial Center; the Gerontology Program Annual Open House (April 9); and a Careers in Aging Community Panel (April 10). Additionally, Phyllis Greenberg (Gerontology) and Patty Bresser (Nursing) will be co-presenting their research on Advance Care Planning Certification at the upcoming Association for Gerontology in Higher Education (AGHE) conference. At the same conference, Rona Karasik (Gerontology) and Kyoko Kishimoto (Ethnic & Women's Studies) will co-present their research on Infusing Anti-Racist Pedagogy into the Gerontological Curriculum.

Kinesiology

Tim Lyngen and Carmen Johnson, Health and Physical Education majors, were chosen as SCSU's Health and Physical Education "Majors of the Year". They will be recognized at the American Alliance for Health, Physical Education, Recreation and Dance [AAHPERD] Annual Convention in St Louis in April along with other HPE majors of the year across the United States. Financial support for their trip is being provided by the Kinesiology Department's Foundation donors as well as the SCSU Physical Education club.

Nursing

The nursing department has been completing the mid-cycle accreditation (5 years) review process in order to maintain accreditation by the Commission of Colleges of Nursing (CCNE). The CCNE report is due on June 1, 2014. The review process requires the department to review the nursing program using four standards which include: Program quality, Institutional commitment, Curriculum and teaching-learning practices, and Program effectiveness and program outcomes.

The department hosted international guests in January and February 2014. This included 4 students and one faculty from Nelson Mandela University in South Africa, and 2 students from the University of Concepcion in Chile. All of the students spent time in the classroom, lab, and at clinical.

Social Work

The Social Work faculty are in the process of completing their accreditation report to the Council of Social Work Education (CSWE). The report is due in March and there will be an accreditation site visit scheduled for fall semester 2014.

FACULTY NEWS

Congratulations to the following faculty members who received grants from the Center of Excellence in Teaching and Learning :

- **Communication Sciences and Disorders**

Joy McKenzie- "Efficacy of Treatment for Auditory Processing Disorders"

Sarah Smits-Bandstra- "Pedagogical Lab Practices across Science Disciplines"

Theresa Estrem- "Enhancing Multicultural Engagement in Speech-Language Therapy"

- **Nursing**

Victoria Hammer, Sue Herm, and Kathy Koepke- "End of Life Cultural and Spiritual Immersion Simulation"

For details, please go to the CETL Teaching and Learning Grants webpage: <http://www.stcloudstate.edu/teaching/awards/grants.asp>

Congratulations to the SHHS faculty who received grants between July and December 2013:

- Advance Care Planning Certificate Course- CentraCare Health Foundation - **Patty Bresser, Nursing**
- Prosthetic Writing Services- Environmentally Managed Systems (EMS) - **Glenn Street- Kinesiology**
- Comparing Horizontal Patient Transfer Devices- CEGA Innovations - **David Bacharach- Kinesiology**
- BSW Child Welfare Consortium Project- U of M- Twin Cities, School of Social Work - **Mary Pfohl- Social Work**

Communication Sciences and Disorders

In January, the NSSHLA team in CSD helped raise \$1,334 and biked a total of 54.11 miles (between 10 members) on a stationary bike for the United Cerebral Palsy of Central MN. The “Stuck in Motion” fundraiser raised almost \$23,000 with 10 teams of 10. The team biked to honor a woman in their community. Pictured on right is Carrie Sorensen, President of NSSHLA and Jodel Page, CSD faculty.



Community Psychology, Counseling, and Family Therapy

Steve Hoover is offering the Mindfulness-Based Stress Reduction Program (MBSR) again this spring. Dr. Hoover has offered the MBSR Program every semester as a free opportunity to learn strategies for managing stress to staff and faculty. He has also developed and offers each semester a version of this program (Mindful Stress Management) for graduate students. This spring, 17 people have signed up to participate in the program. The series will be held on March 5th, April 2nd, and April 16th from 1-2pm in the Miller Center, Room 122.

Kinesiology

Sue Tarr was selected as the 2014-2015 Central District Scholar of the American Alliance for Health, Physical Education, Recreation, and Dance, which recognizes individuals in higher education who have demonstrated an extraordinary level of scholarship. She is also serving as the President of the MN Association of Health, Physical Education, Recreation, and Dance.

Medical Lab Science

Louise Millis, **Medical Lab Science**, is attending and presenting at the Clinical Laboratory Educators Conference in San Jose CA in February. She will speak to some of the challenges facing students entering the MLS program.

Nursing

As a part of her capstone project, Peggy Fossen, **Nursing**, conducted the first simulation in Nursing 312-Mental Health in February titled: “Hearing Voices That Are Distressing”. Student feedback indicated this was a very enlightening experience for them, increasing their understanding of individuals with auditory hallucinations. Roxanne Wilson and Kathy Koepke also participated in this simulation/role play.

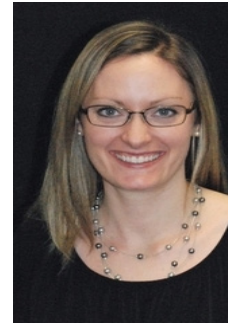
Roxanne Wilson in **Nursing** and Amy Hebert in **Community Psychology, Counseling and Family Therapy** have been awarded New Researcher Funds for their project, “Interdisciplinary Project: Improving care of persons with disabilities”. They were awarded \$9,000.00.



STUDENT AND ALUMNI NEWS

Mary Carpenter, Communication Sciences and Disorders, and **Penny Pesta**, Social Work, were nominated by their department for The School of Graduate Studies 2013 Distinguished Thesis award.

Heather Goochey, '08 Community Counseling alumni, is the Director of the Professional Family Based Division at Nystrom & Associates. In her current role, she oversees the therapeutic work of 17 mental health professionals and 90 practitioners. She works closely with county and state representatives in the implementation of multiple mental health programs targeting children and adolescents. She also provides guidance and training on the provision of high quality mental health services including ethics, documentation and treatment planning, and trauma informed care. Heather states, "I experienced tremendous growth and opportunity since leaving SCSU, and it was possible because of the support and encouragement I received from the Community Counseling graduate program."



Anna Schoonover, Medical Lab Science, was named runner-up for the Common Reading Essay and Scholarship Competition. The 35 essays, submitted on one of two questions related to Conor Grennan's Little Princes, were subjected to extensive judging by a panel of 7 teaching faculty and staff.

Several students from SHHS will be performing at the production "That Takes Ovaries" put on by the Women's Center on February 18th and 19th at the Atwood Theatre from 7:00-8:30pm. Tickets are free but must be reserved from the Atwood front desk.

This spring the SCSU University Gerontology Program, in conjunction with the Beta Zeta Chapter of Sigma Phi Omega (National Academic Honors and Professional Society in Gerontology) and the SCSU Gerontology Club, will host several events for Careers in Aging Week 2014. Using an interdisciplinary approach, they hope to educate students about the field of aging and open them up to new career opportunities. They also hope to educate members of the community, faculty and staff regarding what gerontology has to offer. Go to www.careersinaging.com for more information.

STUDENT AND FACULTY PUBLICATIONS

Applied Behavior Analysis:

- Cook, J. L., **Rapp, J. T.**, Gomes, L. A., Frazer, T. J., & Lindblad, T. L. (in press). Effects of verbal reprimands on targeted and untargeted stereotypy. *Behavioral Interventions*.
- Enloe, K., & **Rapp, J. T.** (in press). Effects of noncontingent social interaction on immediate and subsequent engagement in vocal and motor stereotypy in children with autism. *Behavior Modification*.
- Baruni, R., **Rapp, J. T.**, Lipe, S., & Novotny M. (2014). Using lag schedules to increase toy play variability for children with intellectual disabilities. *Behavioral Interventions*.
- Watkins, N. & **Rapp, J. T.**, (2014). Environmental enrichment and response cost: Immediate and subsequent effects on stereotypy. *Journal of Applied Behavior Analysis*.
- Weldy, C., **Rapp, J. T.** & Capocasa, K. (2014). Training staff to implement brief stimulus preference assessments. *Journal of Applied Behavior Analysis*.
- Bartell, K.** (2014). From righteous to risqué, Miley Cyrus: A case study. *Behavior Analysis Digest International*, 26 (1), 1-2.
- Witts, B. N.** (2013). Cumulative frequencies of behavior analytic journal publications related to human research on gambling. *Analysis of Gambling Behavior*, 7, 59-65.
- Witts, B. N.**, & Henkle, K. (2014). Interruption Disruption: Or is it? *AMLE magazine*, 1(5), 35-36.
- Witts, B. N.** (2014). Pavlovian Conditioning May Help Explain Actor's Death. *Behavior Analysis Digest International*, 26(1), 5-6.
- Several graduate students in the **Applied Behavior Analysis** program will be presenting papers and poster presentations along with ABA faculty at the upcoming Minnesota Northland Association for Behavior Analysis, 3rd Annual Data Blitz on February 21st:
- Larum, T. J., & **Witts, B. N.** An Analysis of Pedestrian Safety at a University Roundabout.
- Lood, E. A., Cotton, S. A., & **Rudrud, E. H.** Increasing independence of pulling up underwear and pants during the bathroom routine.
- McDonough, M. R., Arief, N. K., Larum, T. J., **Sargeant, J.**, **Witts, B. N.**, & **Rudrud, E. H.** Teacher command type affects latency to student responding.
- McDonough, M. R., **Sargeant, J. J.**, **Rudrud, E. H.**, & **Witts, B. N.** Decreasing head rubbing of a middle school boy using DRO and Token Economy.
- Steffes, A., Barsness, L., & **Schulze, K.A.** Reducing Vocal Stereotypy of a Child with Autism Using a Stimulus Discrimination Procedure

Social Work:

- Yeo, Y.S.** (2014, January). Chronic Disease Prevalence and Unmet Care Needs among Elderly Immigrants: Population Estimates From the Pooled 2002-2008 National Health Interview Survey Data. Paper presentation at Paper presentation at the *Society for Social Work and Research Conference*, San Antonio, TX, Jan. 15-19, 2014.
-

EASTMAN UPDATE

Saint Cloud State University is looking towards the state to help plan for the renovation of Eastman Hall to create greater integration of academic and student service programs. A renovated Eastman will allow our programs to expand on the expectation of applied and experiential learning as a cornerstone of learning for School of Health and Human Services students, providing a distinction for the school and its programs within the higher education marketplace. The planned renovation would eliminate a \$3.8 million maintenance backlog, as well strengthen ties with the local medical communities. The total cost of planning the 43,000 square foot renovation is \$865,000.

<http://build.mn/project/northwest/st-cloud-state-university/>

MARCH INTO BETTER HEALTH

CentraCare Health's 13th annual Women's Health 101 is planned from 8 a.m. to 2:30 p.m. Saturday, March 15, at CentraCare Health Plaza. The event is free, but a \$10 donation is encouraged for women's health education. Visit booths, receive free screenings and enjoy health-related presentations. At 1:15 p.m., Sisters Michelle Meyers and Kay O'Neil will use wit and wisdom to teach you practical skills for nurturing your self-esteem and helping those around you also grow in self-appreciation. Pre-registration is encouraged at centracare.com. For more information, call (320) 229-4980.

ADMITTED STUDENT DAYS

This exclusive event is for Admitted students, their families and guests. It is a great opportunity for them to experience St. Cloud State University and learn more about the academic programs offered within the six colleges and schools. During each Admitted Student Day, students and their families/guests have the chance to:

- Meet with faculty, staff and current students
- Learn more about our academic programs
- Take a tour of our campus
- Learn more about the resources that are available to students

Atwood Ballroom, 9:00am-2:00pm

- Friday, February 28, 2014
 - Saturday, March 1, 2014
 - Friday, March 21, 2014 {Students of Color, hosted by Multicultural Student Services}
-

SPRING 2014 EVENTS

FEBRUARY

Admitted Student Day Events

Atwood Ballroom, 9:00am-2:00pm

- Friday, February 28, 2014
- Saturday, March 1, 2014
- Friday, March 21, 2014 {Students of Color, hosted by Multicultural Student Services}

MARCH

SHHS Spring Colloquium

Dr. Edward Ehlinger- "Health Issues and Concerns in Central Minnesota"

Tuesday, March 18, 2014, Atwood Ballroom

- 9:30-10:30: Keynote Address
- 11:00-11:45: Community/faculty panel discussion
- 12:30-2:30: Interdisciplinary student discussion

APRIL

MnSCU Student Symposium

Monday, April 14th, 2014

Minnesota State University- Moorhead

Student Research Colloquium

Tuesday, April 15, 2014

Atwood Memorial Center

SHHS Scholarship and Community Reception

April 23rd, 4:30-6:00

Alumni Room

Alumni Awards

Thursday, April 24, 2014

Atwood Memorial Center

26th Annual Excellence in Leadership Banquet

Sunday, April 27, 2014

Atwood Ballroom

MAY

SHHS Spring Commencement Reception and Master's Hooding Ceremony

Sunday, May 11, 2014, 8:45am-10:00am

Ritsche Auditorium

Spring Commencement

Sunday, May 11, 2014, 10:30am and 3:00pm

Herb Brooks National Hockey Center

SUBMIT YOUR IDEAS

The School of Health and Human Services is always looking to add speakers and events to the Colloquia. Submit your ideas for speakers and events to Emily Simon, Experiential Learning and Outreach Coordinator, at eesimon@stcloudstate.edu.

Monday, April 14th, 2014

SCHOOL OF HEALTH & HUMAN SERVICES

Communication Sciences &
Disorders

Gerontology

Community Psychology,
Counseling & Family Therapy

Medical Laboratory Science

Kinesiology

Nuclear Medicine Technology

Nursing

Radiologic Technology

Social Work

MISSION

We Prepare our Students to be leaders, scholars and professionals in promoting and providing lifelong optimal health and wellness.

VISION

We enhance the well-being of people and their communities through nationally recognized innovative programs, rigorous practical experiences and strong professional partnerships.

VALUES

Service to the Community
Excellence in teaching, scholarship and practice
Lifelong learning
Interdisciplinary innovation
Diversity

Stewart Hall 365

Ph: 320-308-4894

Fax: 320-308-2940

Email: shhs@stcloudstate.edu

www.stcloudstate.edu/shhs
