

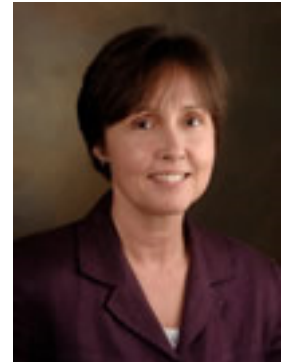
School of Health and Human Services Newsletter
September 2013

Issue No. 3: 1

Hello everyone,

It is wonderful to welcome back our faculty, staff, and students to SCSU after the summer break. I hope everyone had a wonderful summer. We move into the third year of our school with much accomplished and much more to do.

We ended last school year with our commencement and Master's hooding ceremonies. We are so proud of all that our graduates have accomplished and we are eager to see their continued success as they begin (or continue) their careers. Many of you will be receiving this newsletter for the first time as alumni and I hope you will keep us updated on your accomplishments.



We welcome a new program director to the SHHS Dean's Advisory Council: Louise Millis is the program director of the Medical Laboratory Science program. Brenda Lenz rejoins our group as chair of the department of Nursing after her sabbatical last year. They will join our returning DAC group: Rebecca Crowell (CSD), Manijeh Daneshpour (CCP), Rona Karasik (GERO), Steve Ratliff (Nuc Med/Rad Tech) and Tracy Ore (SW). I thank Pat Ellinger (MLS) and Joyce Simones (Nursing) for their work at DAC last year.

A lot has been happening this summer in our departments and programs and there are updates below. I am also thrilled to welcome new faculty to our school. You'll see specific information on each of them below. It promises to be a busy year.

Best wishes,

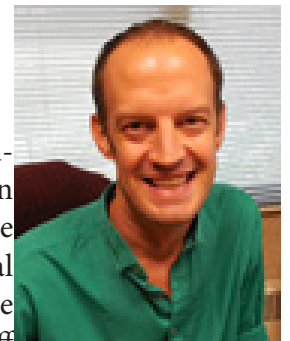
Monica Devers
Dean

Welcome New Faculty

Seth Christman

College Counseling and Student Development

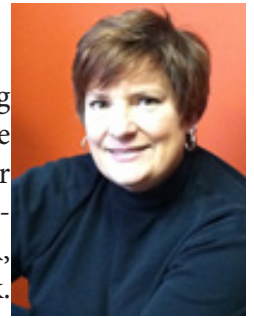
Seth Christman, Ph.D., is an Assistant Professor in College Counseling in the Community Psychology, Counseling and Family Therapy department. He completed his B.S. in Psychology at the University of North Dakota and his M.Ed. in College Student Personnel at the University of Maryland. After working in student affairs at Johns Hopkins University Medical Campus, Seth received his Ph.D. in Counseling Psychology at the University of Miami. He completed his pre-doctoral internship at the University of Minnesota, and worked as a staff psychologist at Georgetown University's campus counseling center. His path through student affairs and counseling psychology converge here, as Assistant Professor in the College Counseling and Student Development program.



Amy Hebert

Rehabilitation Counseling

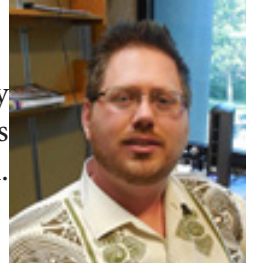
Amy Hebert, Ph.D., CRC, NIC is an Assistant Professor for Rehabilitation Counseling in the Community Psychology, Counseling and Family Therapy Program. She holds the Rehabilitation Counselor Certification from the Commission on Rehabilitation Counselor Certification (CRCC), and is nationally certified as a sign language interpreter. She obtained her masters and doctorate in Rehabilitation Counseling from the University of Arkansas in Fayetteville, AR, and her bachelor's degree in sign language interpreting from the University of Arkansas at Little Rock.



Benjamin Witts

Applied Behavior Analysis

Benjamin Witts, Ph.D. has joined the Community Psychology, Counseling, and Family Therapy department as an Assistant Professor, specializing in Applied Behavior Analysis. He earned his doctoral degree at the University of Nevada, Reno, where he studied gambling-related phenomenon.

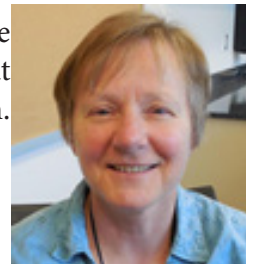


Louise Millis

Medical Lab Science

Louise Millis, M.S. is the new Program Director for our Medical Laboratory Science program. She completed her bachelor's degree in Medical Laboratory Science (MLS) from Western Connecticut State University and Master's degree in Microbiology from the University of Wisconsin - Oshkosh.

In 2007, Louise accepted a position in the Biology department at North Hennepin Community College (NHCC) and, in addition to teaching, she began developing a Bachelor's degree completion program for Medical Laboratory Technicians (associate's degree) in conjunction with St. Cloud State University.



Roxanne Wilson

Nursing

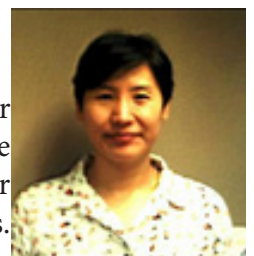
Roxanne Wilson, Ph.D., RN is an Assistant professor in the Department of Nursing Science. She has worked at St. Cloud Hospital for many years and has experience in mental health, professional and leadership development and oncology. Her doctoral work was completed in May 2012. She used grounded theory to develop a model of how parents of persons who are mentally ill change their parenting focus as they age. Roxanne returns to the department after having been involved in the preparation and launch of the Nursing program at SCSU.



Younsook Anna Yeo

Social Work

Younsook Yeo is an Assistant professor in the Department of Social Work. She received her M.S.W. and Master of Applied Statistics from the University of South Carolina. Most recently, she completed her Ph.D. from the College of Social Work at the University of South Carolina. Her research interests are focused on the reduction of health disparities in immigrant populations.



Provost Action Grants

In 2012-13, the Provost initiated a program of Provost's Action Grants to fund projects that had been identified by departments as part of their efforts towards developing and supporting an "extraordinary education" for our students. These initiatives were funded due to their potential to directly and substantially impact the learning experience for our students. There were five SHHS projects funded. An update is provided on four of the five currently in progress this year.

Gerontology

The Gerontology Program was awarded a 2013 Provost Action Grant for their project "Hands on Technology to Simulate Aging". This project allowed for the purchase of a variety of hands on materials to better meet students visual, kinesthetic, and interpersonal learning styles by simulating physical experiences of aging and creating visual and tactile experiences which demonstrate otherwise internal processes (e.g., brain structures, bone structures, heart muscle) in order to enhance understanding of physical experiences of sensory change that may occur with age and increase understanding of normal and pathological aging processes and promote healthy aging. The grant will fund the purchase of aging simulation equipment (visual impairment goggles, hearing software), physiological models (e.g., heart, brain, joints), hands on training materials (e.g., for breast and skin cancer), and universal design and adaptive assistance equipment (e.g., for dressing, eating, bathing).

Nuclear Medicine/Radiologic Technology

Dr. Steven T. Ratliff (faculty member in Chemistry and Physics and Director of Nuclear Medicine Technology and Radiologic Technology) along with Dr. Kevin L. Haglin (Co-Chair, Chemistry and Physics), Dr. Ken Miller (Chair, Mechanical and Manufacturing Engineering), and Dr. Mark Petzold (Chair, Electrical and Computing Engineering) wrote a new program development proposal called "Course Development for Nuclear Engineering Minor." The purpose of their project is to study options for course offerings and course development that relate to Nuclear Engineering and to study options for how to offer a Nuclear Engineering minor.

The faculty members anticipate that a Nuclear Engineering minor would include at least two new courses, including a nuclear engineering course and a radiation safety (health physics) course. Milestone 1 ("Offer Physics 450: Introduction to Nuclear Engineering") was met by Dr. Kevin Haglin in Spring 2013. Much progress was made during the summer towards the accomplishment of Milestone 2 ("Develop a course outline and student learning outcomes for Health Physics course"). Also, a textbook has been chosen and recommendations are being prepared for how to offer the course in Spring 2014.

Nursing Science

The Department of Nursing Science faculty has been meeting to propose an additional pathway for practicing Registered Nurses to obtain their baccalaureate degree. The Institute of Medicine (IOM) report indicates the need for 80% baccalaureate prepared nurses by 2020.

A RN to BSN committee was formed and has been meeting since January. Similar existing RN to BSN programs have been reviewed. With the assistance of a statistician, an on-line needs assessment has been sent to potential Associate and Diploma Registered Nurses in the area. From the needs assessment, it was determined that most potential RN to BSN students would prefer an on-line program; either entirely on-line or a hybrid of face to face and on-line.

This fall, a representative from the Minnesota Alliance for Nurses Education (MANE) came to SCSU to discuss the RN to BSN initiative that is currently underway in Minnesota. The next steps are to finalize the direction that SCSU will take with curriculum building and alliances within the state.

Social Work

This summer, Patience Togo Malm traveled to Ghana to meet with partners at the University of Ghana and other community partners on how to forge ahead with their project to develop a Domestic Violence Training and Family Support Program. The International Center at the University of Ghana has agreed to house this project, which will allow students from SCSU to participate in a three week exchange program with students from Ghana. Patience also met with a representative from the Domestic Violence Unit of the Ghana Police service who usually works with victims for Domestic Violence in Ghana; they have also agreed to work with the department on this project. Dr. Morgan Nyendu, Professor of Political Science, will also be traveling to Ghana in December to continue with the work. The department of Social Work is currently in the process

of completing their program curriculum and preparing materials for recruitment to begin in spring semester.

Department News

Communication Sciences and Disorders

Dr. Rangamani and Dr. Estrem were invited to conduct seminars on communication disorders at the Fonoaudiólogo program at the Universidad de Concepción in May 2013. One seminar focused on assessment and intervention of aphasia in adults (Dr. Rangamani) and one seminar was focused on autism in children (Dr. Estrem). Both seminars, each 3 days long, were offered to the students and faculty members of the Universidad de Concepción and practicing Speech Language Pathologists from Chile and other neighboring countries. Dr. Rangamani and Dr. Estrem had opportunities to visit medical centers and schools that serve adults and children with disabilities. Dr. Rangamani has a specialty certification by the Board of Academy of Neurogenic Communication Disorders and Sciences, and clinical and research expertise in the area of adult language and cognitive disorders, aphasia and multicultural issues. Dr. Estrem has clinical and research expertise in the area of early childhood, autism, and multicultural issues. Both have traveled nationally and internationally to conduct lectures, seminars and workshops in their respective fields of interest.



Community Psychology, Counseling, and Family Therapy

The Rehabilitation Counseling program has been granted re-accreditation for 8 years by the Council on Rehabilitation Education (CORE). The program has been accredited for over 37 years and is one of the oldest accredited programs at the university.

Nursing

Victoria Hammer, Sue Herm, and Kathy Koepke presented their poster entitled "End of Life Cultural and Spiritual Immersion Simulation" at three conferences last spring and one this summer.

Utilizing low and high fidelity simulation technology in the laboratory setting allowed faculty to immerse students in a multi-cultural and spiritual end of life death experience. Second semester baccalaureate nursing students were provided a simulation opportunity to experience end of life care that was holistic, inter-professional, and appropriate to three Upper Midwest cultures: Christian Caucasian, Native American, and Islam Somali. Inter-professional health care members and individuals of the different cultural communities were consulted to develop culturally and spiritually authentic end of life scenarios. These individuals acted as role players in the scenarios. The simulation experiences impacted the nursing students' knowledge, skills, and affective learning for these scenarios that culminated in powerful, emotionally charged debriefing sessions.



The picture on the right was taken at the Minnesota Simulation Conference, Riverland Community College, Austin MN, May 31, 2013.

Faculty News

Gerontology

Dr. Rona Karasik was awarded Fellow Status in the Gerontological Society of America in May 2013. The Gerontological Society of America (GSA) is the nation's oldest and largest interdisciplinary organization devoted to research, education, and practice in the field of aging. She will be recognized at the upcoming GSA Scientific Meeting in November in New Orleans. Dr. Karasik has also recently published 4 articles and has given 4 conference presentations.

Karasik, R.J., Hamon, R., Writz, J., & Moddu Reddy, A. (in press). *Two thumbs up: Using popular films in introductory aging courses*. Gerontology & Geriatrics Education.

Karasik, R.J. and Berry, J. (2013). *Reimagining Care for Persons with Severe Dementia-Related Behavioral Issues: The Lakeview Ranch Model of Specialized Dementia Care™* Journal of Dementia Care, 21(3), 28-31.

Karasik, R.J. (2013). *Reflecting on reflection: Capitalizing on the learning in intergenerational service-learning*. Gerontology & Geriatrics Education, 34 (1), 78-98.

Karasik, R.J. (2013). *What Works: What can Sigma Phi Omega or a Gerontology Club do for your Academic Program?* AGHE Exchange: Newsletter of the Association for Gerontology in Higher Education, 36(2), 10-11.

Kinesiology

Welcome to Jessica Abrahams, who has joined the Athletics as the Assistant Women's Basketball coach. Jessica returns to SCSU, her alma mater, to replace Megan Vogel who took a position with UW-Green Bay. Some of you may remember Jessica as one of our own teacher education majors, as well as a Husky basketball player. She will be teaching various classes in the department of Kinesiology this year.



David Bacharach received a \$10,978 grant from CEGA Ltd. entitled: Comparing horizontal patient transfer devices and effective transfer techniques of experienced caregivers. Friction, force and torque were measured during patient transfers using four different devices. Co-investigators included Kyle Miller and Glenn Street from Kinesiology and Joyce Simmons, Sue Hermand and Kathy Koepke from Nursing.

Nursing

Brenda Lenz published a third research report of findings in May 2013 entitled, "Faculty-perceived barriers and benefits to teaching tobacco cessation." As part of her sabbatical in AY 12-13, Dr. Lenz has been working at a rural Minnesota industry on smoking cessation.

Student News

Jacob Kahnke, Recreation and Sports Management major, was named a member of the 2013 Capital One Academic All-America® Division II Men's and Women's At-Large Teams as selected by the College Sports Information Directors of America (CoSIDA). Kahnke was a four-time All-American for the Huskies after transferring from Old Dominion. He capped his brilliant career with a third place finish at heavyweight at the 2013 NCAA National Championships, helping SCSU finish second as a team. He ended the year with a 23-1 record. In 2012, Kahnke earned his second straight runner-up finish at Nationals, finishing the year at 36-3 with 15 pins. He was 29-2 as a sophomore and posted a 30-7 record as a freshman. This season the Husky wrestling team won their second straight NSIC title, third straight NCAA Division II Super Region 3 Championship and for the third straight year placed as the national runner-up at the NCAA Division II Championships. St. Cloud State tied an NCAA Division II record with 47 consecutive dual match victories. A recreation and sport management major with a 3.42 GPA, Kahnke finished his career with 118 wins.



Alumni News

Deb Louis, a May 2013 Nursing graduate, is the department's third American Indian graduate to pass the National Council (of State Boards of Nursing) Licensure Examination. The nursing department is at a 100% pass rate for this group.

Kaye Lee, a December 2012 Nursing graduate from Korea, was recently qualified to take the nursing boards. Korea does not recognize many of the US nursing programs because they do not have enough clinical experience. According to Joyce Simones, "It is exciting news that students graduating from our nursing program will be recognized as RNs in Korea."

ISELF Grand Opening

The Integrated Science and Engineering Laboratory Facility (ISELF) officially opened on August 21st, 2013. ISELF will serve mostly upper-level and graduate-level science, technology, engineering, mathematics, medical technology and radiology classes. ISELF's function, collaboration, flexibility, scale and sustainability will transform how faculty work and students learn.



According to Professor Steve Ratliff, there are three spaces in the ISELF building that have the potential to be used for the Radiologic Technology and Nuclear Medicine Technology programs: the hot lab, the radiation lab, and the visualization lab. The hot lab is a room where radioactive materials can be used. The lab has workspaces, cabinets, some shielded storage areas, and some lead shielding in the walls. The radiation lab is a laboratory room located adjacent to the hot lab and can potentially be used for activities in existing physics courses, chemistry courses, and a new course in Health Physics (the physics of radiation safety). The visualization lab is designed to be a place for projects that require "intensive visualization" (in this case, a place where medical images can be displayed). It is designed to be used by multiple disciplines to provide "instructional and open lab space for visualization-intense applications, including 2-D and 3-D design..., simulation, haptic application, and general data visualization."

CPS-3 Enrollment a Huge Success

The American Cancer Society Department of Epidemiology and Surveillance is recruiting 300,000 adults across the United States and Puerto Rico to participate in this historic research study. SCSU, along with 5 other St. Cloud community sites, enrolled a total of 471 participants in the nation-wide Cancer Prevention Study 3 (CPS-3). The purpose of CPS-3 is to better understand the lifestyle, behavioral, and other factors that may prevent and/or cause cancer and to ultimately eliminate this disease as a major health problem for this and future generations.

On June 18, the School of Health and Human Services teamed up with Student Health Services to enroll 101 participants during a 4 hour event in the Education Building. We wish to extend many thanks to the event coordinators, volunteers, and study participants for supporting this worthy cause.

Fall 2013 Events

OCTOBER

Science, Engineering, Health and Human Services Job and Internship Fair
SCSU Atwood Ballroom, October 3rd, 12:00 p.m. - 3:00 p.m.

Nuclear Medicine Career Night

University of Wisconsin- Lacrosse, October 10th, 5:00 p.m.

This is an opportunity to students to meet clinical directors and learn more about Nuclear Medicine Technology. Although anyone is welcome, this will be most meaningful for students who are within one to two years of finishing their coursework for Nuclear Medicine Technology.

2nd Annual Survive and Thrive Conference

Kelly Inn and SCSU Welcome Center- October 16-18

<http://www.survivethrive.net/>

Discover Red & Black Days

SCSU Campus, Oct 17-18, 8:00 a.m. - 3:00 p.m.

This annual October open house occurs during the Education Minnesota Break and is SCSU's largest visit event. This is an opportunity for students and parents to tour campus and explore our programs.

Making Strides against Breast Cancer Walk

SCSU Campus, Oct 19th, 7:00 a.m. registration opens, 9:00 a.m. walk starts

SHHS Fall Colloquium Speaker

Health and Human Service Delivery in a Changing and Increasingly Racially and Economically Diverse Society
presented by Dr. Larry E. Davis, University of Pittsburgh

Atwood Memorial Center- Cascade, October 24th, 9:30 a.m.

Sponsored by the Social Work Department

NOVEMBER

SCSU Alumni Reception

Rochester Country Club, November 7th, 5:30-7:00 p.m.

DECEMBER

SCSU Commencement

Halenbeck Hall, December 21st, 2:00 p.m.

SCHOOL OF HEALTH & HUMAN SERVICES

Communication Sciences &
Disorders

Community Psychology,
Counseling, & Family Therapy

Kinesiology

Nursing

Social Work

Gerontology

Medical Laboratory Science

Nuclear Medicine Technology

Radiologic Technology

MISSION

We prepare our students to be leaders, scholars and professionals in promoting and providing lifelong optimal health and wellness.

VISION

We enhance the well-being of people and their communities through nationally recognized innovative programs, rigorous practical experiences and strong professional partnerships.

VALUES

Service to the community
Excellence in teaching, scholarship and practice
Professional and ethical behavior
Lifelong learning
Interdisciplinary innovation
Diversity

Stewart Hall 365

Ph: 320-308-4894

Fax: 320-308-2940

E-Mail: shhs@stcloudstate.edu

www.stcloudstate.edu/shhs