



MERCY/ST. LUKE'S  
SCHOOL OF  
**Radiologic  
Technology**

**Program Conference 2018**

**Ashley Balliet, M.Ed.  
RT(R)(M)**

**SCSU edits by S. T. Ratliff, Ph.D.**

**Version of July 17, 2018**

# Consumer Information & Program Effectiveness Data

- <https://www.unitypoint.org/cedarrapids/school-of-radiologic-technology.aspx>
- This includes information regarding graduation rates, median debt of students completing the program and other important information.
- Direct links can be found at the end of this presentation.
- Hard copies of all information are available upon request from the Program Director.

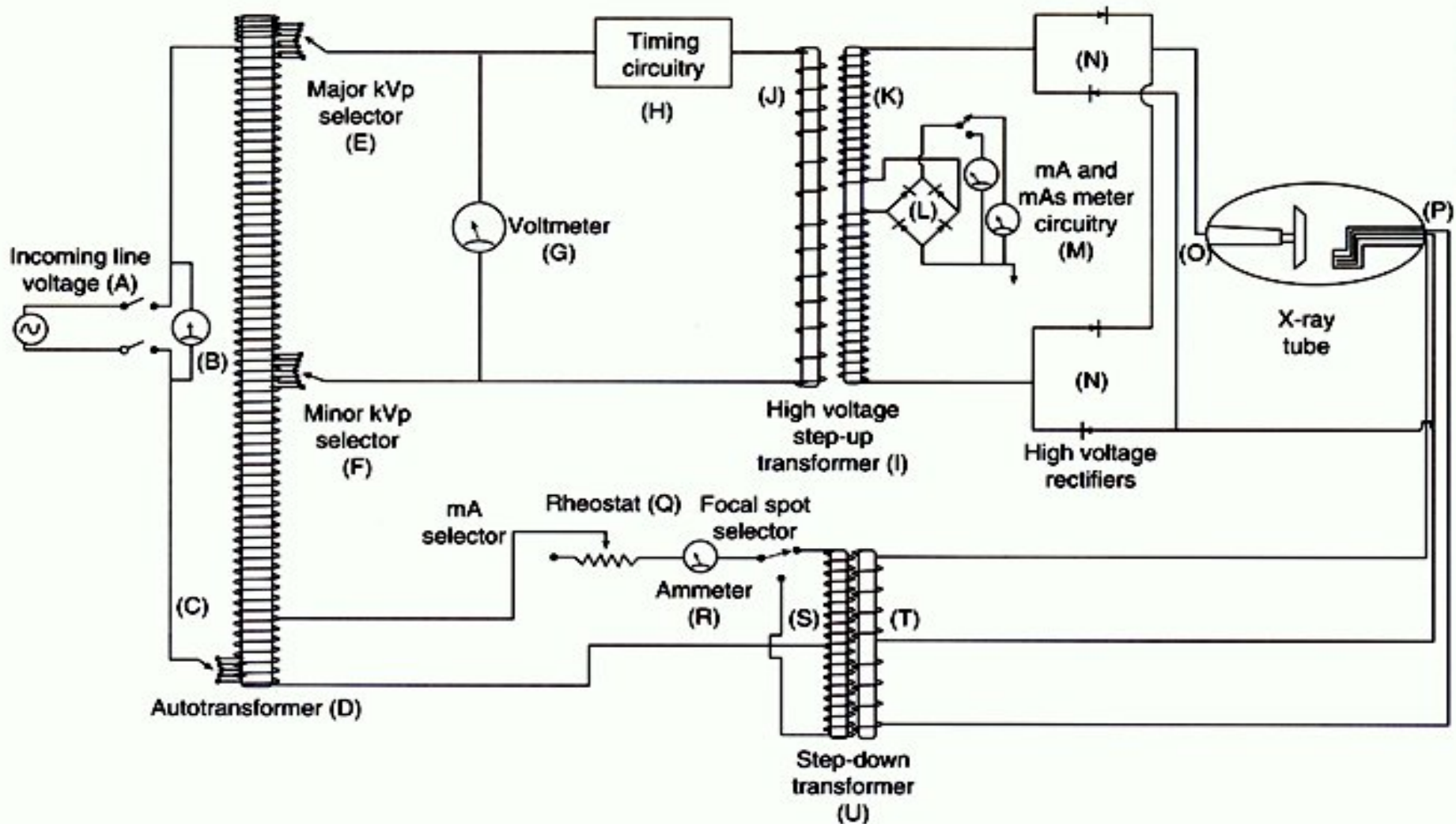
# Radiologic Technology...

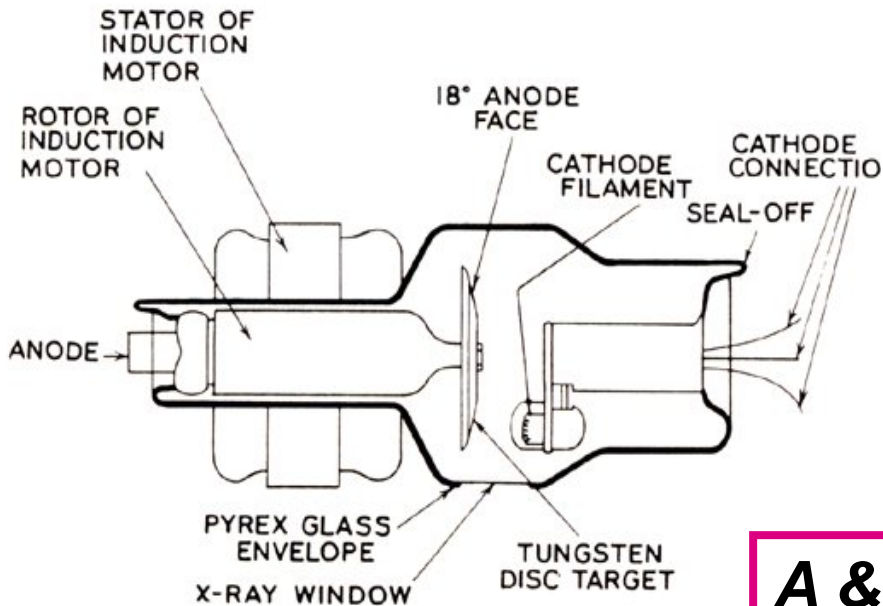
- Is the art and science of applying ionizing radiation to humans to create images of the body that will aid physicians in the detection, diagnosis and treatment of diseases.

# Double-sided coin

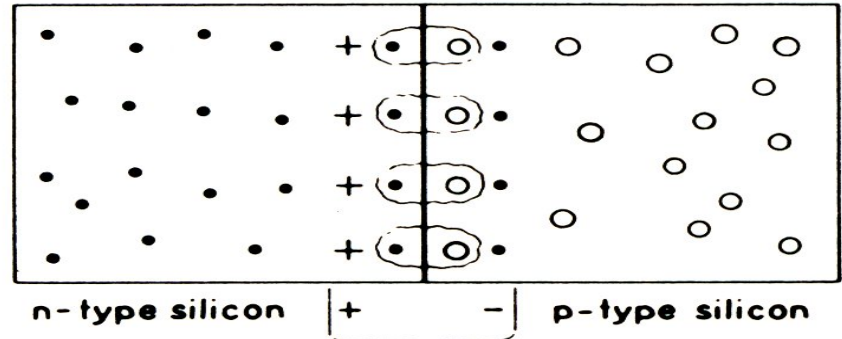
- On one side, we deal with patients on a continual basis so this is a “people profession”.
- Patient contact is not as lengthy per patient as it is in nursing.

- On the other side, this is a science-oriented profession, constantly utilizing *math and science* knowledge.





electrons and holes  
combine at n-p junction

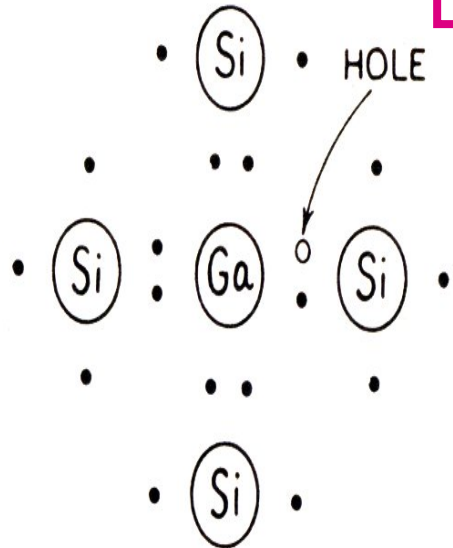



**Physics**

**A & P**

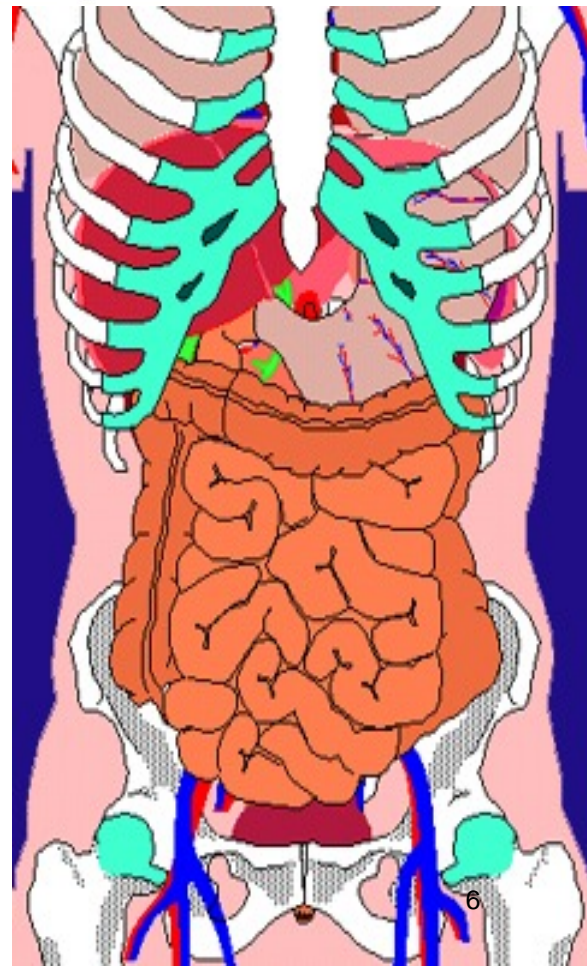
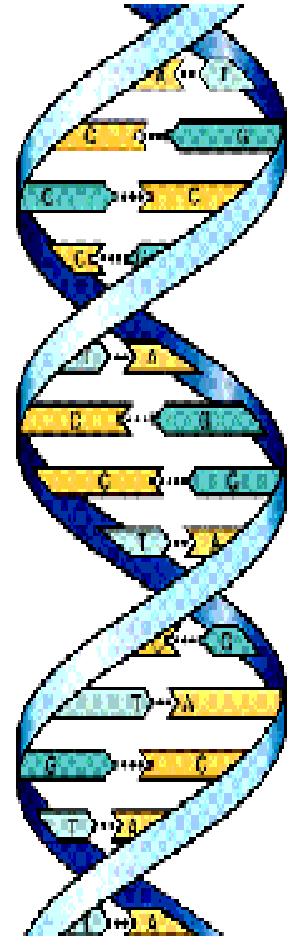
**Biology**

**Chemistry**



  
 SYMBOL FOR GALLIUM  
 WITH 3 VALENCE ELECTRONS  
 ACCEPTOR ATOM

**Math, math, math!**



- We work with equipment as much as or more than we do with patients.
- Therefore, we must know as much or more about it as we do about patients and their care.
- Radiation is a hazardous material!





- Mobile equipment used:
  - At patients' bedside
  - In the emergency room
  - In the operating room
  - In the neonatal intensive care unit
  - In pain clinic
  - In the morgue



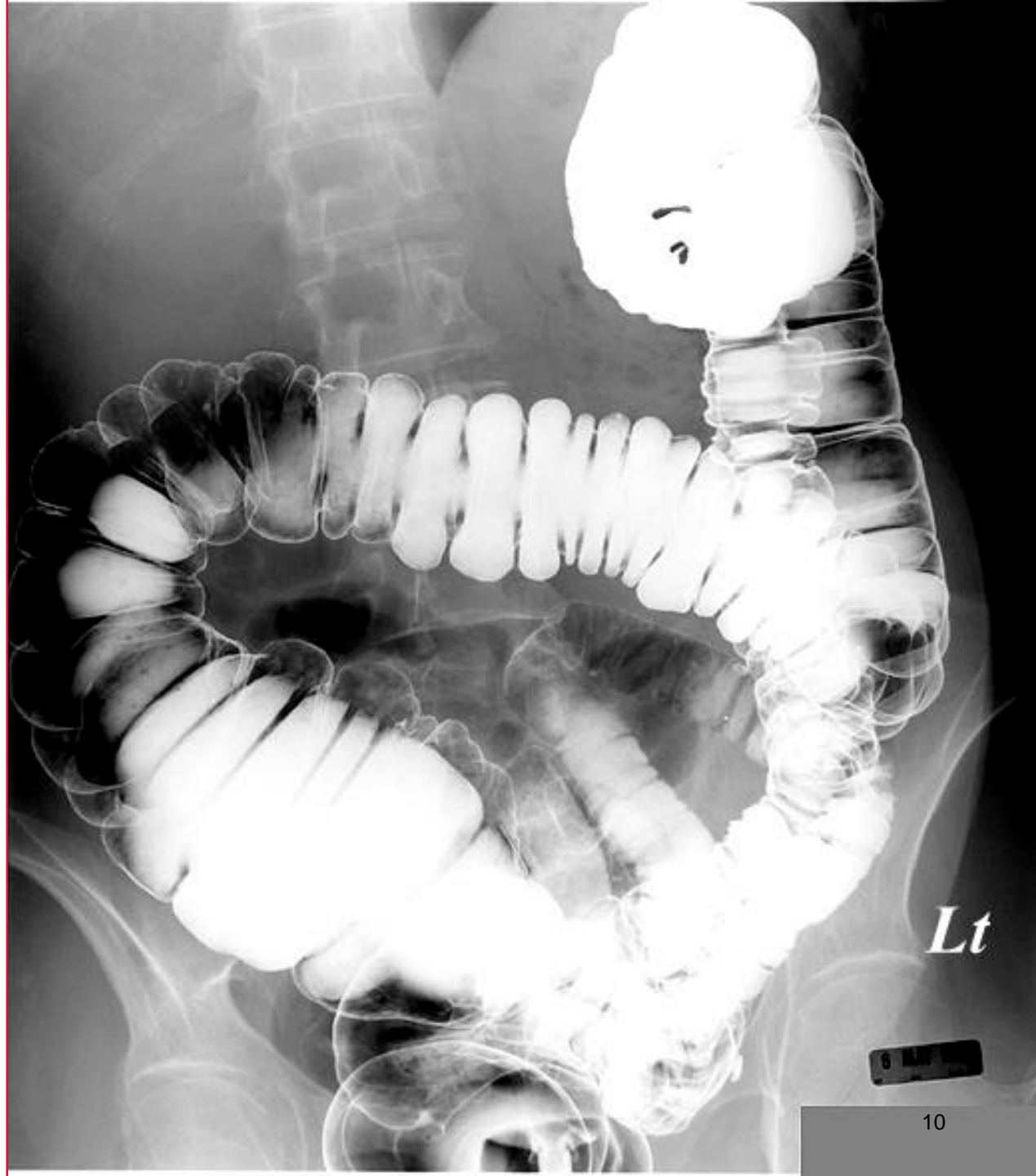


Routine chest x-ray, which students perform within the first six weeks of the program. This is the most abundant exam performed in most imaging departments.



Barium Enema-  
One fluoroscopy  
exam we perform  
with a radiologist  
in the room who is  
making active  
diagnosis during  
the exam.

Contrast media  
(barium) is  
introduced into the  
large intestine  
through an enema  
tube which the  
students/techs  
insert into the  
rectum.



Upper GI exam-  
Also performed  
with a radiologist  
in the room  
making an active  
diagnosis.  
Contrast media  
(barium) is  
introduced into  
the stomach by  
the patient  
drinking the liquid  
barium.



# Specialization

- Computed Tomography
- Magnetic Resonance Imaging
- Sonography
- Radiation Therapy
- Nuclear Medicine
- Mammography
- Cardiovascular Interventional
- *Students are given exposure to each area and more!*



# COLLEGE CREDIT



- SCSU students will enroll in special off-campus courses at SCSU which will provide academic credit for the internship (with successful completion of MStL program, etc.).

# PROGRAM INFORMATION

# SCHOOL MISSION

- ✎ To provide a high quality education in the profession of Radiologic Technology through the use of competency based clinical instruction and comprehensive didactic education.
- ✎ Program Goals and Learning Outcomes may be found on the website at <https://www.unitypoint.org/cedarrapids/school-of-radiologic-technology.aspx>



# ACCREDITATION

- Joint Review Committee on Education in Radiologic Technology
  - [www.jrcert.org](http://www.jrcert.org)
  - Only agency recognized by the US Department of Education to accredit radiography programs
- Approved to participate in Title IV programs by USDE (Financial Aid)
- Voluntarily registered with Iowa College Aid Commission

# FACULTY

- Ashley Balliet– Program Director
- Crystal Crandall– Clinical Coordinator-Mercy Medical Center
- Rochelle Holt – Clinical Coordinator-St. Luke’s Hospital
- Lisa Brekke-Administrative Assistant

# LOCATIONS

- CLASSES-Mercy Medical Center and St. Luke's Hospital
- CLINICAL-Primarily Mercy Medical Center & St. Luke's Hospitals Radiology departments
- 1 week rotation at RCI. Radiologists private office here in Cedar Rapids that contract their services to both hospitals.

- **Students participate in approximately 2700 clinical education hours and 1000 didactic (classroom) hours during the 24 month program.**



**No holiday rotations are scheduled.**

- **Full-time program (40 hrs/wk) beginning in early July. Most weeks are Mon – Fri, 7 am to 3:30 pm. Limited number of 10:30 am to 7 pm rotations as well as 12:00 noon – 8:30 pm and 2 – 10:30 pm. Weekend rotations in second year.**

# Courses Included

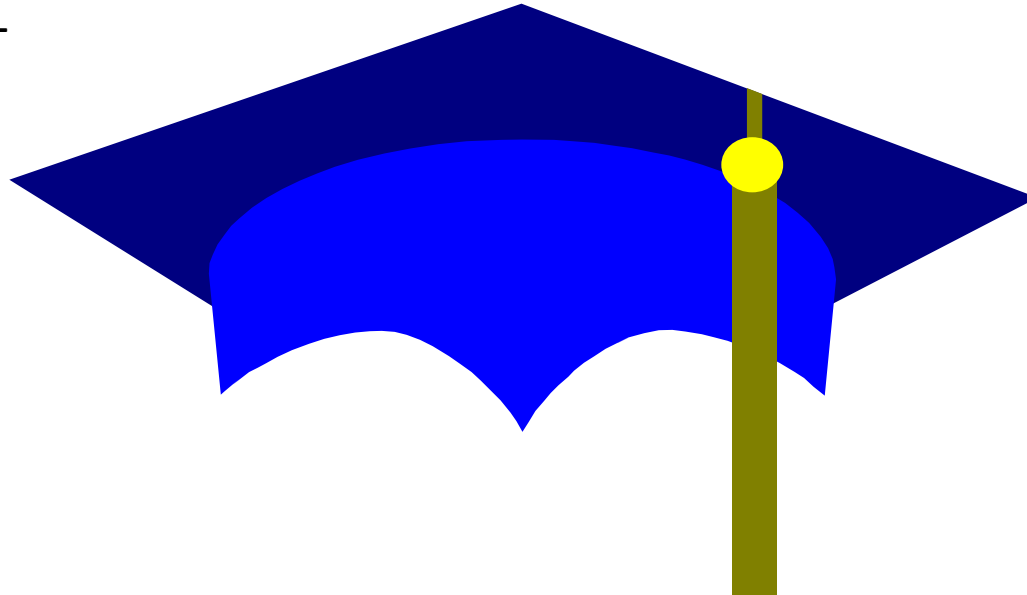
- **Intro to Radiography & Protection**
- **Professional Ethics**
- **Patient Care I & II**
- **Radiographic Anatomy & Procedures I, II, III**
- **Rad Bio & Protection**
- **Rad Science I & II**
- **Patient & Personnel Protection**
- **Advanced Procedures**
- **Radiographic Physics**
- **Cross-Sectional Anatomy**
- **Pathology**
- **Film Critique I & II**
- **Applied Clinicals I – VII**
- **Senior Seminar**

# GRADING POLICY

- ★ **A+ = 4.25 POINTS – OUTSTANDING (99-100%)**
- ★ **A = 4 POINTS – EXCELLENT (94-98%)**
- ★ **B+ = 3.5 POINTS - ABOVE AVERAGE (91-93%)**
- ★ **B = 3 POINTS – AVERAGE (87-90%)**
- 😊 **C+ = 2.5 POINTS - BELOW AVERAGE (84-86%)**
- 😐 **C = 2 POINTS - ACCEPTABLE MIN. (80-83%)**
- 😐 **D = 1 POINT – UNSATISFACTORY (75-79%)**
- 😞 **F = 0 POINTS & DISMISSAL (0-74%)**

# ACADEMIC REQUIREMENTS (during the internship)

- MINIMUM GRADE OF “C” IN ALL COURSES
- A GRADE OF “D” OR “F” REQUIRES DISMISSAL.
- 2.5 GPA MINIMUM
  - BELOW 2.5 MEANS ACADEMIC PROBATION
  - BELOW 2.5 FOR 2 CONSECUTIVE SEMESTERS -GROUNDS FOR IMMEDIATE DISMISSAL





# Behavior and Attendance

- *Students are expected to be in attendance. You cannot learn if you are not present.*
- *Students are expected to demonstrate professionalism:*
  - ***Honesty***
  - ***Maturity***
  - ***Motivation***
  - ***Respect***
  - ***Initiative***
- ***Adherence to Policies & Procedures and the ASRT Code of Ethics is expected***

# American Registry of Radiologic Technologists (ARRT) Exam

- National credentialing exam
- Graduates are eligible if:
  - \$200 Fee paid (current cost)
  - Entire curriculum/competencies completed
  - Academic degree held
  - Any felony/misdemeanor convictions of moral character reviewed by ARRT Ethics Committee
  - Any suspensions from an RT program reviewed by Ethics Committee
  - Any suspensions/dismissals from any educational institution for academic dishonesty reviewed as well.

**TUITION & FEES/Yr.**

**(see next slide)**

**TEXTBOOKS/2 yrs.**

**\$ 600.00**

**UNIFORMS & SHOES/2 yrs.**

**\$ 600.00**

**ACTIVITY FEES (EFFECTIVE 2020)**

**\$ 130.00**

**Senior Spring Semester**

**HEALTH INSURANCE**

**Optional through St. Luke's. Cost depends on plan chosen and based on part-time status.**

**LIVING EXPENSES**

**???????**

**\*All costs subject to change**

# St. Cloud State Tuition

- You continue to pay tuition and fees to SCSU during the internship. Part of the tuition you pay at SCSU in the amount of \$3750 per year will be forwarded to MStL for payment of your MStL tuition.
- You don't have to pay tuition to MStL.
- If you utilize Title IV financial aid funds you will need to file for financial aid with SCSU. All of your financial aid needs to come from SCSU.

# Steps in the Process

1. View this Program Conference information and then contact Dr. Ratliff by email as soon as possible, but ***before September 30***.
2. Dr. Ratliff will communicate with you.
3. Successfully complete all SCSU on-campus courses by May 2019.
4. Apply to Mercy/St. Luke's by their deadline.

# MStL PRE-REQUISITE COURSES

(satisfied by SCSU requirements)

- A & P I with lab – 4 credits (BIOL 202)
- A & P II with lab – 4 credits (BIOL 204)
- Humanities elective – 3 credits
- Intro to Psychology – 3 credits or any SCSU Goal 5 Lib. Ed. course (prefer SOC, PSY).
  - Sociology meets this requirement as well
- Comp I – 3 credits (ENGL 191)
- Fundamentals of Oral Comm. - 3 credits (CMST 192)
- Microcomputer Literacy - 1 credit: Physics 308 meets this requirement
- Intermediate Algebra – 4 credits
  - Math 112 meets this requirement
- Medical Terminology – 4 credits (BIOL 266 acceptable)

# Pre-requisite Courses

- Must be completed with a grade of C or above
- Transfer credit from other colleges determined by St. Cloud State University
- No class attempted/failed more than 2 times
- Maintain a 2.5 GPA from pre-req courses
- First priority will be given to those completing these courses by the January 15 application deadline



If you have not completed all pre-reqs by Jan. 15, you will still be considered if Dr. Ratliff can verify enrollment in the remainder of the pre-req courses. Acceptance will be contingent upon successful completion of courses in progress.

- First priority does NOT mean you will be automatically accepted just because you have the pre-reqs completed.
- It means if your application points are EQUAL with a candidate who is enrolled in any remaining pre-reqs at the Jan. 15 deadline, you will be given priority because you have all the pre-reqs completed

- If you have not completed all pre-reqs by the end of fall semester, you will still be considered if you can prove you are enrolled in the remaining pre-req courses for the spring semester.
- If you are then accepted, of course you must successfully complete those courses or your acceptance offer will be withdrawn.

# SCSU DIRECTOR'S OFFICE

- 1. After watching this presentation, it is your responsibility to email Dr. Ratliff well before September 30 of your intent to apply to MStL. Once you notify him, he will begin the process of verifying your eligibility.*
- 2. It is your responsibility to keep Dr. Ratliff informed of any changes in your situation.*
- 3. When your eligibility is verified, Dr. Ratliff will provide MStL with your e-mail address so the online application and essay requirements can be sent electronically.*

# Our Process

- The app and essay will be sent electronically and must be submitted by January 15. Also, the \$25 application fee must be postmarked by the January 15 deadline. No exceptions!
- All apps held until January 15
- Top 20 candidates offered interviews in February/March
- All applicants notified of acceptance/rejection by the end of March

# Acceptance decisions

- Academic history (pre-req GPA) – 40%
- Research/Interest (Essay) – 20%
  - Candidates offered interviews based on these two
- Interpersonal/Communication – 40%
  - Total points then decide acceptance
  - 12 accepted annually

# After graduation from MStL, the result is...

- Certificate in Radiologic Technology from Mercy/St. Luke's
- Eligibility to take the ARRT exam
- BS from St. Cloud State University, providing you have met all other graduation requirements
  - The ARRT now requires a degree *before* attempting the certification exam so if you do *not* meet SCSU grad requirements for any reason, you will not be eligible for the certification exam!

# Placement

- Typically in hospitals and outpatient clinics
- Mobile companies
- Private physician offices
- 2018 Grads' average starting wage = \$19.73/hr



- Ashley.Balliet@unitypoint.org
- 319.369.7097
- For information regarding graduation rates, median loan debt of students completing the program, and other important information, see <https://www.unitypoint.org/cedarrapids/radiologic-gainful-employment-disclosure.aspx>.
- For Program Effectiveness Data, see <https://www.unitypoint.org/cedarrapids//program-effectiveness-data.aspx>.
- For Program Goals/Outcomes, see <https://www.unitypoint.org/cedarrapids/program-goals-.aspx>.
- For other Consumer Information, see <https://www.unitypoint.org/cedarrapids/filesimages/finalConsumer%20Information%202018-2019.pdf> 7/18

*Thank you for considering Mercy/St. Luke's for your educational needs. We look forward to meeting you soon!*