

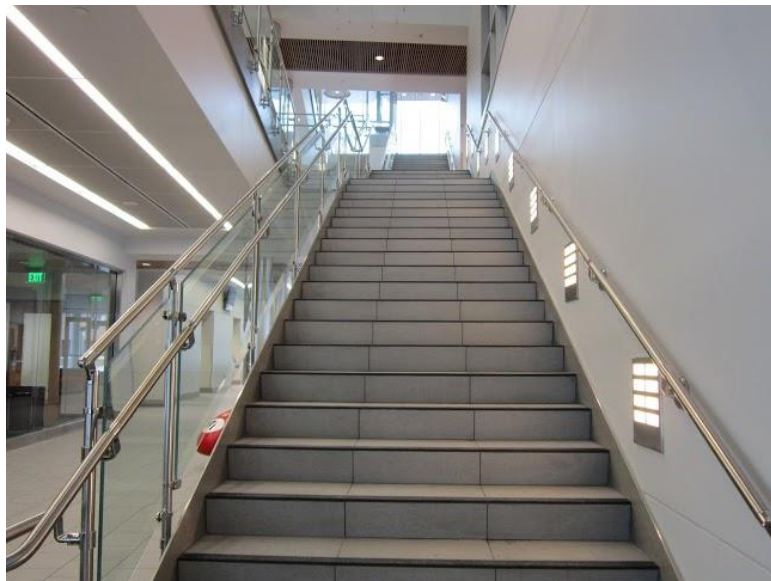
ISELF Building Lactation Room Directions

North Entrance (From 8th Street)



Immediately after entering the building, go up the stairs to the second floor. Turn left into the hallway.

Or take the elevator to the left of the stairwell to the second floor. When you exit the elevator, take a left. Walk down to the next hallway and turn left.





The lactation room is located in 202, the first door on the left down this hallway.

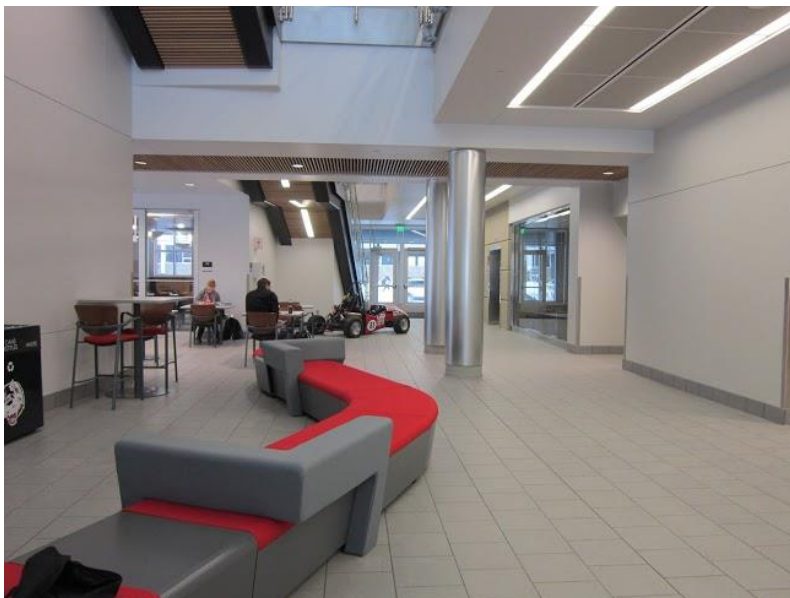




** A security button is located beneath the table in the lactation room for your safety. Pressing the button immediately alerts campus Public Safety of your location. **

From the South Entrance (Near the Engineering & Computing Center Building)

Walk through the foyer to the stairs. Take the stairs up to the second floor. Or take the elevator to the right of the stairs to the second floor.





At the top of the stairs, turn left into the hallway. When exiting the elevator, turn left, then turn left down the first hallway. The lactation room is located in 202, the first door on the left.



**** A security button is located beneath the table in the lactation room for your safety. Pressing the button immediately alerts campus Public Safety of your location. ****

From the Skyway between Wick Science Building and ISELF

Walk straight down the hallway. The lactation room (202), is located on your right near the end of the hallway.



**** A security button is located beneath the table in the lactation room for your safety. Pressing the button immediately alerts campus Public Safety of your location. ****

For comments or suggestions regarding this or a similar document, please contact the Office of Equity and Affirmative Action, AS 102: (320) 308-5123 or affirmativeaction@stcloudstate.edu.

A special thanks to HOM Furniture of St. Cloud for the donation of the room furnishings!