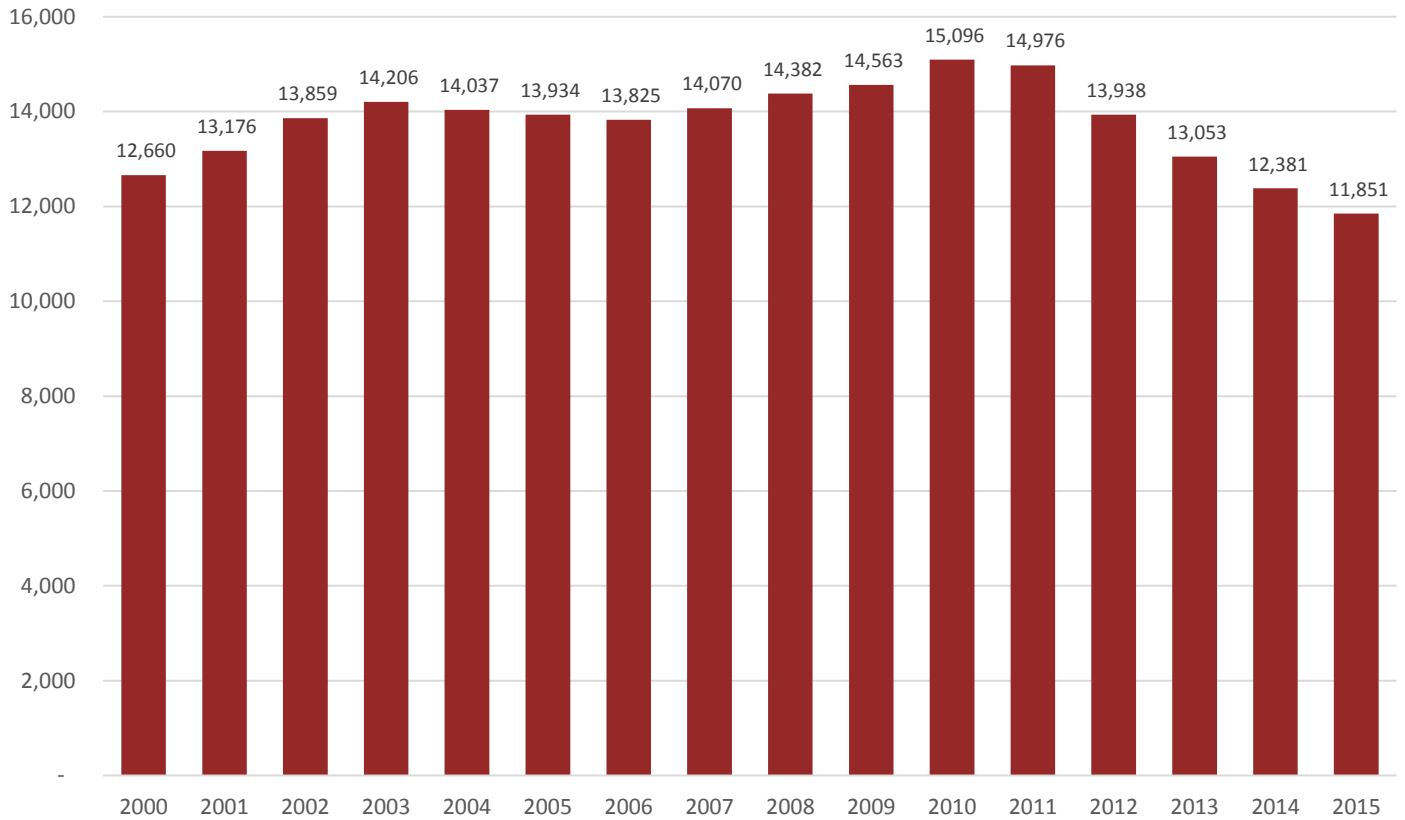
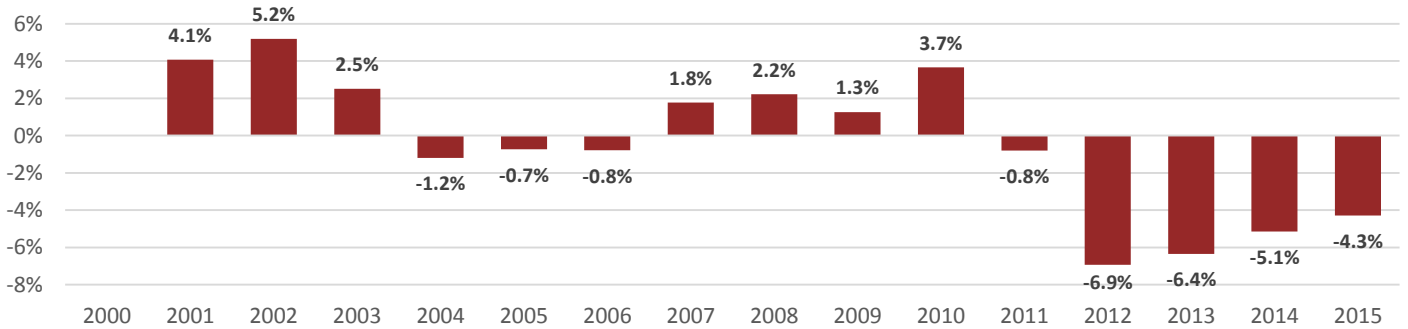


St. Cloud State University FYE Enrollment | 2000 - 2015

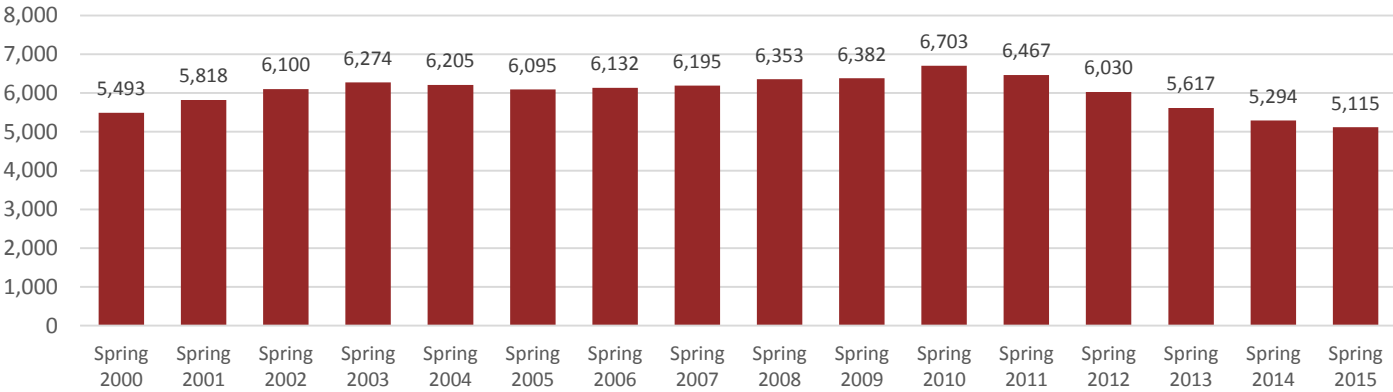
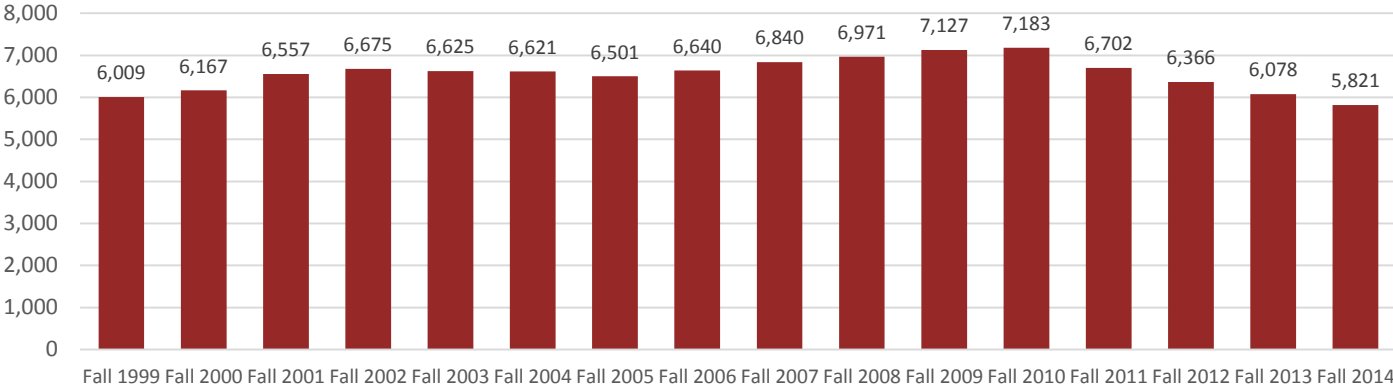
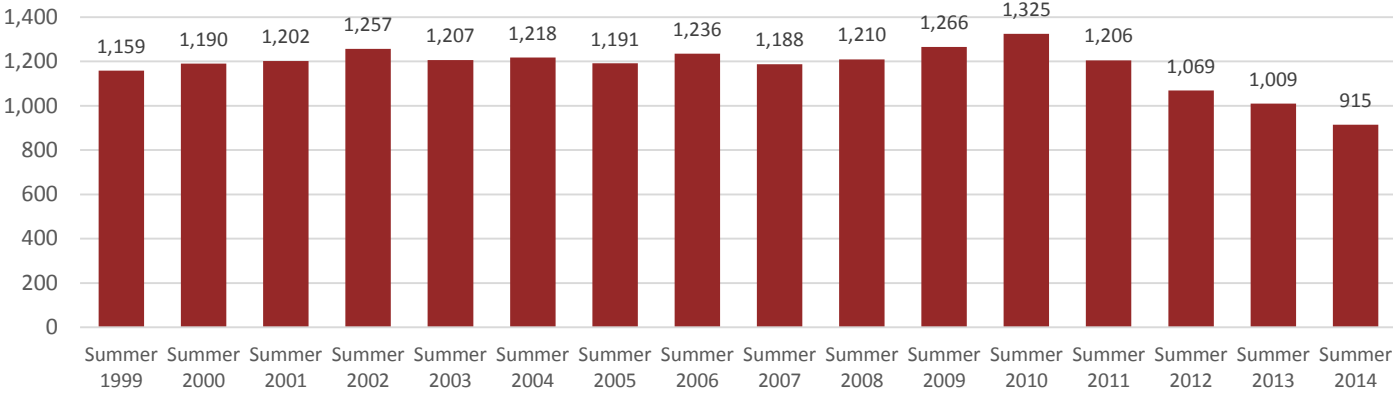


Percent Change From Prior Year



Term	2000	2001	2002	2003	2004	2005	2006	2007
Total FYE	12,660	13,176	13,859	14,206	14,037	13,934	13,825	14,070
<i>Undergraduate</i>	11,566	12,133	12,766	13,041	12,762	12,629	12,559	12,697
<i>Graduate</i>	1,093	1,043	1,093	1,166	1,275	1,305	1,266	1,373

Term	2008	2009	2010	2011	2012	2013	2014	2015
Total FYE	14,382	14,563	15,096	14,976	13,938	13,053	12,381	11,851
<i>Undergraduate</i>	12,978	13,095	13,523	13,397	12,520	11,667	11,049	10,467
<i>Graduate</i>	1,404	1,468	1,573	1,578	1,418	1,386	1,332	1,385



Note the change in scale for the summer FYE chart.

Defining full-year equivalent (FYE) enrollment:

In Minnesota, for purposes of state budgeting, the concept of full-year equivalent (FYE) student has been established as the standard means of reporting enrollments for public postsecondary institutions. Minnesota Statute 135A.031, Subd.4. (b) states:

For all purposes where student enrollment is used for budgeting purposes, student enrollment shall be measured in full-year equivalents and shall include only enrollments in courses that award credit or otherwise satisfy any of the requirements of an academic or vocational program.

Public postsecondary institutions calculate FYE students by dividing total student credit hours by the number of credit hours constituting a full load. Under semesters, a full-time load is 30 credit hours for undergraduate and professional courses and 20 credit hours for graduate courses for the academic year.

$$FYE = \frac{\sum \text{Undergraduate Credits}}{30} + \frac{\sum \text{Graduate Credits}}{20}$$

For additional information, please visit <http://www.ohe.state.mn.us/mPg.cfm?pageID=1294>