

*new student*

# RESOURCE GUIDE



HUSKIES  
**ADVISING &  
REGISTRATION**





# WELCOME!

Welcome to St. Cloud State and the academic advising & course registration segment of your orientation to university life. Whether you are on campus for an Advising and Registration Day, working online with an advisor to register for classes or working individually with an advisor on campus, you are taking an important step toward becoming a St. Cloud State student. We invite you to help us personalize your experience at every step of the way.

Our job is to create spaces and provide resources during your orientation where you can build on the strengths and skills which have brought you to the university. Our commitment is to your success.

You are joining a vibrant, diverse community that welcomes 3,500 new first-year and transfer students each year, each with unique personalities, goals and dreams for the future. We encourage each of our students to actively participate in the choice of classes and activities that will be the foundation of their college years.

At St. Cloud State we also offer a wide variety of academic programs to choose from and the resource people you need to assist you in the process of making good choices in your pursuit of a baccalaureate degree. Your first year is a distinctly important time for major and career exploration and we have committed some of our brightest and best to assist you in that process.

Regardless of the distinct path each student will traverse at the university, we share some common commitments with regard to the attributes all students will be encouraged to

enhance in pursuit of a baccalaureate degree. At St. Cloud State this finds expression in Our Husky Compact: a commitment we make to our students and students make to their education that will set them apart and prepare them to be global citizens of the 21st century. When students graduate with an SCSU education, they will:



## OUR HUSKY COMPACT

- ◇ Think Creatively and Critically
- ◇ Seek and Apply Knowledge
- ◇ Communicate Effectively
- ◇ Integrate Existing and Evolving Technologies
- ◇ Engage as a Member of a Diverse and Multicultural World
- ◇ Act with Personal Integrity and Civic Responsibility

Speaking for all of us at St. Cloud State, we wish you all the best as you embark on this exciting part of your life.

*Michael Sharp*  
Director, Advising & Student Transitions

# TABLE OF CONTENTS

<b>WELCOME LETTER (OUR HUSKY COMPACT).....</b>	<b>INSIDE FRONT COVER</b>
<b>NEW STUDENT CHECKLIST .....</b>	<b>2</b>
<b>CONTACT INFORMATION .....</b>	<b>3</b>
<b>CAMPUS CALENDAR.....</b>	<b>4</b>
<b>FINANCING YOUR EDUCATION .....</b>	<b>5</b>
Applying for Financial Aid	
Types of Financial Aid	
Paying Tuition & Fees	
Determine Your Costs Worksheet	
Glossary of Terms	
<b>ADVISING &amp; REGISTRATION .....</b>	<b>9</b>
Academic Advising	
Graduation Requirements	
Academic Performance Standards	
College Success Strategies	
Placement Testing	
Respect and Responsibility Program	
Office of Records and Registration	
Transfer Credits	
Degree Audit Report	
Transferring Credits: Frequently Asked Questions	
Registration Deadlines	
<b>CAREER SERVICES CENTER .....</b>	<b>16</b>
Career Development Path	
Career Services Resources	
<b>STUDENT RESOURCES .....</b>	<b>18</b>
Academic Organizational Chart	
Academic	
Financial	
Health & Safety	
Parking & Transportation	
Student Activities	
Student Services	
Technology	
<b>COMMON READING PROGRAM .....</b>	<b>29</b>
<b>HUSKIES FIRST FOUR/ORIENTATION.....</b>	<b>30</b>
<b>PARTNERS IN EDUCATION (PARENTS,FRIENDS &amp; FAMILY) .....</b>	<b>32</b>
<b>LIVING ON CAMPUS .....</b>	<b>34</b>
<b>REGISTERING FOR CLASSES .....</b>	<b>35</b>
e-Services & St. Cloud State email login instructions	
Registration Instructions	
Semester Schedule Template	
Registration Lab Checklist	
<b>LIBERAL EDUCATION PROGRAM .....</b>	<b>38</b>
<b>ACADEMIC RUBRICS .....</b>	<b>42</b>
<b>CAMPUS MAP .....</b>	<b>INSIDE BACK COVER</b>

# NEW STUDENT CHECKLIST

## BEFORE CLASSES BEGIN

- Send final high school transcript indicating high school graduation date to the Office of Records & Registration (first year students only)\*
- Send official college transcripts if you have transfer credits\* (see page 13)
- Complete online immunization form if needed (see page 22)
- Apply for financial aid (see page 5)
- Contact Residential Life for on-campus housing application/information (see page 34)
- Complete placement exams as needed (see page 12)
- Obtain your SCSU Campus Card from the Campus Card Office in Atwood Memorial Center (see page 25)
- Locate your St. Cloud State email address (see instructions on page 35)
- Add SCSU Email to Smart Phone (click on "Ask St. Cloud State" button at bottom of [www.stcloudstate.edu](http://www.stcloudstate.edu) for instructions)
- Opt in for university text messages (see My Profile in e-Services)
- Pay tuition and fees, provide a down payment, or complete the FAFSA to avoid cancellation of registration (see page 6)
- Purchase books (see page 26)
- Complete Part One of the Respect & Responsibility requirement (see page 12)
- Review the Student Code of Conduct at [www.stcloudstate.edu/studenthandbook/code](http://www.stcloudstate.edu/studenthandbook/code)
- Order your parking permit (see page 23)
- Contact Lindgren Child Care Center if you have children aged 2 months–5 years needing child care (see page 26)
- Read the book *The Good Food Revolution* for the Common Reading Program (see page 29)
- Locate your classes (see Campus Map on inside back cover)
- Attend Huskies 1st Four Days (see pages 30-31)

\*International students may have additional requirements for transcript evaluation services. Please email [world2scsu@stcloudstate.edu](mailto:world2scsu@stcloudstate.edu) to check your requirements.

## DURING YOUR FIRST WEEK

- Attend all your classes
  - During your first week of classes instructors will discuss course goals, expectations, attendance policies and course assignments
- Read the syllabus for each course
- Make up a weekly class/study schedule (see page 11)
  - *The Link*, St. Cloud State's academic planner, is available for purchase at the Husky Bookstore or the Atwood Information Desk
- Locate computer labs and places to study on campus
- Register for a Community through Diversity workshop, Part Two of the Respect & Responsibility Program (See page 12)
- Become part of your campus (see pages 24-25)
- Familiarize yourself with locations of campus resources and services (see pages 18-28)
- Visit your Student Recreation Center and become a member of the Fitness Center or join an Intramural team (see pages 24-25)
- Check your D2L Brightspace account regularly for supplemental course information (see page 28)
- Check your St. Cloud State email regularly

# CONTACT INFORMATION

The following list of offices does not constitute the full St. Cloud State Directory, which can be found at [www.stcloudstate.edu](http://www.stcloudstate.edu), under Directory.

<b>Academic Learning Center</b>	(320) 308-4993	236 Centennial Hall	stcloudstate.edu/alc	alc@stcloudstate.edu
	<i>Provides coursework and individualized assistance in reading and study strategies along with course-specific tutoring</i>			
<b>Advising &amp; Student Transitions</b>	(320) 308-6075	366 Centennial Hall	stcloudstate.edu/advising	advising@stcloudstate.edu
	<i>Provides academic advising re: Liberal Education Program, majors, Huskies 1<sup>st</sup> Four, the ACE Program, and other transitional programs.</i>			
<b>Business Advising Center</b>	(320) 308-3214	229 Centennial Hall	stcloudstate.edu/hbs/advising	busadvising@stcloudstate.edu
	<i>Information regarding liberal education, business core, and referral to other campus resources for business majors</i>			
<b>Business Services</b>	(320) 308-4012	123 Administrative Services	stcloudstate.edu/srfs	businessservices@stcloudstate.edu
	<i>Information about payment of your bill</i>			
<b>Campus Recreation</b>	(320) 308-3325	Student Rec Center	stcloudstate.edu/campusrec	campusrec@stcloudstate.edu
	<i>Become an active part of the university community and make personal wellness and recreation a part of your experience</i>			
<b>Center for International Studies (CIS)</b>	(320) 308-4287	101 Lawrence Hall	stcloudstate.edu/internationalstudies	international@stcloudstate.edu
	<i>Resource for international students regarding immigration and life in the U.S. and information about education abroad opportunities</i>			
<b>Counseling &amp; Psychological Services</b>	(320) 308-3171	103 Stewart Hall	stcloudstate.edu/counseling	counseling@stcloudstate.edu
	<i>Individual counseling and workshops to promote personal development and psychological well-being</i>			
<b>English for Academic Purposes (EAP)</b>	(320) 308-5275	51 Building, Room 152	stcloudstate.edu/eap	jjcondon@stcloudstate.edu
	<i>Assistance with placement into EAP courses for English language learners</i>			
<b>Financial Aid Office</b>	(320) 308-2047	106 Administrative Services	www.stcloudstate.edu/srfs	financialaid@stcloudstate.edu
	<i>Information on applying for financial aid and types of aid available to finance your education</i>			
<b>Health Services</b>	(320) 308-3191	Hill Hall	stcloudstate.edu/healthservices	healthservices@stcloudstate.edu
	<i>On-campus medical clinic, questions about Student Immunization Form, transferring prescriptions</i>			
<b>Honors Program</b>	(320) 308-6623	216 Centennial Hall	stcloudstate.edu/honors	honors@stcloudstate.edu
	<i>Highly selective interdisciplinary program that provides the liberal arts portion of a baccalaureate degree</i>			
<b>Husky Bookstore</b>	(320) 308-1489	Centennial Hall (1 <sup>st</sup> floor)	www.thehuskystore.com	bookstore@stcloudstate.edu
	<i>Supplier of textbooks and course materials</i>			
<b>Husky Tech</b>	(320) 308-7000	102 Miller Center	huskynet.stcloudstate.edu	huskytech@stcloudstate.edu
	<i>Your one-stop technology resource on campus. The Computer Store and HelpDesk.</i>			
<b>LGBT Resource Center</b>	(320) 308-5166	142 Atwood Memorial Center	stcloudstate.edu/lgbt	lgbt@stcloudstate.edu
	<i>Resources, services, and programs that create inclusive and empowering environments for all</i>			
<b>Lindgren Child Care Center</b>	(320) 308-3296	122 Engineering & Computing Center	stcloudstate.edu/childcare	childcare@stcloudstate.edu
	<i>On-campus child care for infants, toddlers, and preschoolers</i>			
<b>Math Skills Center</b>	(320) 308-3840	224 Centennial Hall	stcloudstate.edu/mathskills	mathskl@stcloudstate.edu
	<i>Tutoring for college preparatory math courses: MATH 070 and MATH 072</i>			
<b>Multicultural Academic Support Center</b>	(320) 308-3952	221 Centennial Hall	stcloudstate.edu/mss	mss@stcloudstate.edu
	<i>Available services include a computer lab, academic advising, support for academic success and a quiet study area</i>			
<b>Multicultural Student Services (MSS)</b>	(320) 308-3003	141 Atwood Memorial Center	stcloudstate.edu/mss	mss@stcloudstate.edu
	<i>Resource center for students of color: academic assistance, personal development, multicultural programming and study abroad opportunities and cultural organizations</i>			
<b>Placement Testing</b>	(320) 308-2941	366 Centennial Hall	stcloudstate.edu/placementtesting	placementtesting@stcloudstate.edu
	<i>Placement testing including Accuplacer testing and other major specific placement exams</i>			
<b>Records &amp; Registration</b>	(320) 308-2111	118 Administrative Services	www.stcloudstate.edu/srfs	registrar@stcloudstate.edu
	<i>Assistance with navigating eServices, information about transfer credits, veteran's benefits, enrollment verification</i>			
<b>Residential Life</b>	(320) 308-2166	Ervin House	stcloudstate.edu/reslife	reslife@stcloudstate.edu
	<i>Coordinates all aspects of on-campus living</i>			
<b>Richard R. Green House</b>	(320) 308-5392	827 4th Avenue South	stcloudstate.edu/asc	mss@stcloudstate.edu
	<i>Provides study environment along with tutoring and group study sessions to facilitate success in the classroom.</i>			
<b>Student Disability Services</b>	(320) 308-4080	202 Centennial Hall	stcloudstate.edu/sds	sds@stcloudstate.edu
	<i>Information regarding accommodations for a physical, cognitive or mental/emotional disability</i>			
<b>Veterans Resource Center</b>	(320) 308-2185	100 Administrative Services	stcloudstate.edu/veterans	veteransresource@stcloudstate.edu
	<i>Serves the unique higher education needs of students who are veterans, military members or family members</i>			
<b>The Write Place</b>	(320) 308-2031	117 51 Building	stcloudstate.edu/writeplace	writeplace@stcloudstate.edu
	<i>Tutoring for all aspects of the writing process</i>			
<b>Women's Center's Gender Violence Prevention Program</b>	(320) 308-4958	Women's Center	stcloudstate.edu/womenscenter	womenscenter@stcloudstate.edu
	<i>Provides counseling, advocacy, referrals, safety planning, support groups, assistance with protection orders and filing a student conduct violation</i>			

# CAMPUS CALENDAR

## CAMPUS CALENDAR 2016-2017

Important dates from Records & Registration			
	Summer 2016	Fall 2016	Spring 2017
Classes begin	Registration deadlines and course dates vary for summer session courses. Check e-Services for specific dates.	August 22, 2016	January 9, 2017
End of free drop period		August 26, 2016	January 13, 2017
Last day to add classes		August 26, 2016	January 13, 2017
Last day to drop with a W		Check e-Services	Check e-Services
Registration begins for next term		Spring 2017, November 7th, 2016	Summer 2017: February 13, 2017 Fall 2017: April 10, 2017
Last day of classes		December 9, 2016	April 28, 2017
Last day of finals		December 15, 2016	May 4, 2017

For more information regarding registration deadlines visit: [www.stcloudstate.edu/srfs](http://www.stcloudstate.edu/srfs)

Financial Aid Disbursement Dates			
	Summer 2016	Fall 2016	Spring 2017
Aid applied to accounts*	May 19, 2016	August 27, 2016	January 14, 2017
Direct deposits SENT to bank (availability varies)	May 24, 2016	September 1, 2016	January 19, 2017
Checks will use address as of	May 18, 2016	August 26, 2016	January 13, 2017
Checks will be put in the mail	May 25, 2016	September 2, 2016	January 20, 2017

\*Financial aid overages may be delayed if you have a prior balance.

For more information regarding financial aid visit: [www.stcloudstate.edu/srfs](http://www.stcloudstate.edu/srfs)

Due dates for tuition and fees—\$30 fee for a payment plan			
	Summer 2016	Fall 2016	Spring 2017
Full payment—no service fee	June 7, 2016	September 6, 2016	January 23, 2017
Deposit—\$300 to reserve classes	May 2, 2016	August 1, 2016	December 19, 2016
1 <sup>st</sup> payment—1/3 of total charges	May 2, 2016	September 6, 2016	January 5, 2017
2 <sup>nd</sup> payment—half of balance due	June 3, 2016	October 5, 2016	February 6, 2017
Final payment under Payment Plan due	July 5, 2016	November 4, 2016	March 3, 2017
Payment Plan fee applied (\$30)	June 8, 2016	September 7, 2016	January 24, 2017
Late fee applied (\$30)	July 11, 2016	November 14, 2016	March 13, 2017

There will be a hold on registration if full payment is not received by the final due date.

For more information regarding tuition, fees, billing, and payment and for information regarding refunds for TOTAL withdrawal (zero credits for semester) please visit: [www.stcloudstate.edu/srfs](http://www.stcloudstate.edu/srfs)

Student and Family Events			
Event	Fall 2016	Spring 2017	Location
Move-in to Residence Halls	Thursday, August 18, 2016 (for first year, new transfer and CCCP students)	January 7, 2017	Residence Halls
Huskies 1 <sup>st</sup> Four Days	Thursday, August 18-21, 2016	January 8, 2017	
Huskies 1 <sup>st</sup> Four Weeks	August 22-September 18, 2016	January 9, 2017	
Mainstreet and Sidestreet Fall Student Organizations and Community Volunteer Service Fairs	Mainstreet - Wed., August 31, 2016	Sidestreet - Wed., January 18, 2017	Atwood Mall (Rain site - Atwood Ballroom)
Family Weekend—Celebrate! St. Cloud State	September 16-18, 2016		

For more information regarding Huskies 1<sup>st</sup> Four Days and Huskies 1<sup>st</sup> Four Weeks schedules, visit: [www.stcloudstate.edu/firstfour](http://www.stcloudstate.edu/firstfour).

For more information regarding Mainstreet/Sidestreet, and Family Weekend, visit [www.stcloudstate.edu/campusinvolvement](http://www.stcloudstate.edu/campusinvolvement).



# FINANCING YOUR EDUCATION



## Financial Aid Office

Administrative Services 106  
(320) 308-2047  
[www.stcloudstate.edu/srfs](http://www.stcloudstate.edu/srfs)

## APPLYING FOR FINANCIAL AID

The earlier you apply the better so you are considered for all types of aid, including those with limited funding (e.g., student employment). In addition, you receive your award notification earlier which gives you information you need to budget for the academic year. Remember to reapply for financial aid at [www.fafsa.gov](http://www.fafsa.gov) each year after January 1st. Beginning October 1, 2016 you will file your 2017-2018 FAFSA.

**Already Applied for Aid?** Your official award notification will be posted to your student e-Services approximately mid-June. *Read the terms and conditions carefully.* If you decide to borrow a federal student loan, follow the steps to accept it online. You may do this during the summer to ensure your loan is processed before the semester starts. *Remember to borrow only what you need to pay for your educational costs.*

**Haven't Yet Applied or Not Sure If You Should?** You can still apply. Complete the Free Application for Federal Student Aid (FAFSA) online at [www.fafsa.gov](http://www.fafsa.gov). **St. Cloud State's school code is 002377.** If additional forms and/or a copy of your IRS Tax Return Transcript are needed, we will send you a letter requesting the information. TIP: A FAFSA on file with St. Cloud State is a way to hold your course registration. If your family faces financial changes during the course of the academic year and you might need financial aid, it's good to already have the FAFSA on file with our office.

**Transferring to St. Cloud State University?** If you plan to apply for financial aid, remember to list St. Cloud State on your FAFSA so we receive your results. **St. Cloud State's school code is 002377.** Ask the Financial Aid Office at your current school (the one from which you are transferring) to cancel any pending financial aid at that school.



Paying for college is a significant investment and we want you to be well informed as you make this investment. At SCSU we provide students with GradReady, a financial literacy tool designed for college students to learn more about managing their tuition, budget and bills. We encourage you to check it out at [www.stcloudstate.gradready.com](http://www.stcloudstate.gradready.com)

## TYPES OF FINANCIAL AID

- **Grants and Scholarships:** Grants are need-based; scholarships are merit-based. Grants and SCSU scholarships are applied directly to your St. Cloud State billing account. Private (non-SCSU scholarships) apply when the University receives the funds from the donor. Your FAFSA results determine your eligibility for federal and state grants. Grants and scholarships do not need to be repaid.\*\*
- **Student Employment:** There are two types of funding for student employment - work study and University employment. Work study is a need-based financial aid program; University employment is not based on financial need. You are paid every two weeks only for hours actually worked. ***Work study is not a grant.*** If you received a work study on your financial aid award notification, follow the steps online to apply for a position. If you did not receive work study as part of your financial aid package, you may apply for on-campus and approved off-campus community positions beginning October 1<sup>st</sup>. Positions are listed at [www.scsucareers.com](http://www.scsucareers.com).
- **Loans:** Loans must be repaid, with accrued interest. Only borrow what you need to cover your educational costs. Try to pay for books, personal, and miscellaneous costs with earnings from a job or from savings.
  - Need-based loans: federal Perkins or federal subsidized Stafford/Direct.
  - Not based on need: federal unsubsidized Stafford/Direct, federal PLUS, and private loans.

If you decide to borrow, follow the steps outlined on your award notification to accept the loan online. NOTE: All first-time student borrowers of the federal Direct Loan must complete loan entrance counseling and a Master Promissory Note (MPN) at [www.studentloans.gov](http://www.studentloans.gov).

**\*\*IMPORTANT:** If a student withdraws from classes or fails to attend class for the entire term, eligibility for financial aid may be affected and may result in repayment of all or a portion of the student's financial aid. Additional information can be found at [www.stcloudstate.edu/srfs/policies](http://www.stcloudstate.edu/srfs/policies).

For specific information regarding disbursement of your financial aid, please review the section on "Disbursement of Financial Aid."

# FINANCING YOUR EDUCATION

## DISBURSEMENT OF FINANCIAL AID

### Business Services Office

Administrative Services 123  
(320) 308-4012  
[www.stcloudstate.edu/srfs](http://www.stcloudstate.edu/srfs)

## PAYING TUITION & FEES

Financial aid is applied to your student account approximately 5 business days after the first class day and after the free drop/add period. See "Student Bill, Payment Options & Due Dates" at [www.stcloudstate.edu/srfs/finances/student-bill-payment.aspx](http://www.stcloudstate.edu/srfs/finances/student-bill-payment.aspx) or refer to the Campus Calendar in this guide.

- Bills may be viewed online through your e-Services. Students may add one additional user (e.g., a parent) on their e-Services under the "Bills and Payment" section to allow access to billing information.
- Payment plan options are available through the University or an external provider, FACTS/NBS. Information about these payment plans is available at

[www.stcloudstate.edu/srfs/finances/student-bill-payment.aspx](http://www.stcloudstate.edu/srfs/finances/student-bill-payment.aspx)

- **Payment Plan Fee:** Every semester, 10 days after financial aid is applied, a payment plan fee is charged to all student accounts with a remaining balance. The payment plan fee is currently \$30 and is subject to change without notice.
- **Late Fee:** A late fee is a charge made to a student account when the balance is not paid in full by the due date. A late fee is charged to a student's account each semester when there is an outstanding balance 7 days after the last payment plan due date for spring and fall semesters and 3 days after the final payment plan due date for summer semester. The late fee is currently \$30 and is subject to change without notice. Late fees apply to all University past due charges. The only exception will be for current term housing costs on a payment plan set up with the Housing Director or his/her designee.
- Any student with a balance on his/her account after the final due date for the term will be prevented from registering for future semesters.

## DROP FOR NON-PAYMENT POLICY

In order to hold your course registration, you must have an established plan to pay for your semester charges. The following options are available to meet the payment plan requirement. **You only need to meet one of the following conditions by the due date. The specific due date for each semester is posted at**

[www.stcloudstate.edu/srfs/finances/student-bill-payment.aspx](http://www.stcloudstate.edu/srfs/finances/student-bill-payment.aspx)

1. **Your financial aid application (FAFSA) is on file at SCSU**  
Once your Free Application for Federal Student Aid (FAFSA) results have been received by St. Cloud State University, the Financial Aid Applied to Tuition and Fees requirement is met.
2. **Make payment directly to St. Cloud State**—select the option that best fits your situation (please include your StarID when sending in payment)

- Pay tuition and fees in full
- Pay \$300 to hold your classes

### 3. Sign up for NBS e-Cashier payment plan

[www.factstuition.com/ecashier/Index?OpenForm&query=mnscustcloudstate](http://www.factstuition.com/ecashier/Index?OpenForm&query=mnscustcloudstate)

- There is a \$30 charge collected by NelNet Business Solutions
- Payment will be charged to your credit card or taken from your checking or savings account on dates specified in your contract with NelNet Business Solutions

### 4. Third party authorization is on file with the Business Services Office

- To verify whether authorization is on file with SCSU, check your financial aid award in e-Services
- If it's not on file, contact the sponsoring agency to send authorization to SCSU
- For additional questions, contact the Business Services Office at (320) 308-4012

**VETERANS:** Students receiving veteran educational benefits must contact the Office of Records and Registration and make arrangements with the VA Certifying Officer.

## WAYS TO MAKE PAYMENT DIRECTLY TO SCSU

- **Online:** (recommended): [www.stcloudstate.edu](http://www.stcloudstate.edu)  
Master Card, VISA or e-check
  - Click "myHuskyNet" on the top navigation bar
  - Enter your StarID and password
  - Click "e-Services" on the left
  - Click "Bills and Payment" on the left
- **By phone:** (320) 308-4012 between the hours of 8:00 a.m. and 4:00 p.m.—Master Card, VISA, Discover or American Express.  
**NOTE:** During peak periods, there may be a long hold due to the high volume of calls.
- **In person:** Administrative Services Building, Room 123 between the hours of 8:00 a.m. and 4:00 p.m. Monday through Friday. Summer hours are 7:30 a.m.–3:30 p.m.
- **Send check:** SCSU Cashiers, 720 4<sup>th</sup> Ave S., St Cloud MN 56301-4498 (Please include your StarID when sending payment)
- **Use drop boxes:** Located in front of Administrative Services and near east entrance to Atwood Center

### DREAMers!

St. Cloud State University strongly supports DREAMers who are working to complete their college degree. We have dedicated staff members to help you take advantage of the myriad of resources available to DREAMers.

Martha Noyola	Financial Aid Office
Multicultural Academic Support Center	106 Administrative Services
221 Centennial Hall	320.308.2047
320.308.3976	

More information is also available at the Minnesota Office of Higher Education at [www.ohe.state.mn.us/MNDreamAct](http://www.ohe.state.mn.us/MNDreamAct).



# DETERMINE YOUR COSTS

Use your award letter and this step-by-step guide to estimate your out-of-pocket costs to attend St. Cloud State University.

## STEP 1 *Direct expenses*

DIRECT EXPENSES ARE CHARGES THAT TYPICALLY APPEAR AS CHARGES ON YOUR ST. CLOUD STATE STUDENT ACCOUNT (SEE YOUR E-SERVICES.)

	SEMESTER	YEAR
Tuition and fees		
Housing and meals		
Books and supplies		
<b>TOTAL DIRECT EXPENSES</b>	<b>\$</b>	<b>\$</b>

*Not sure what your DIRECT expenses may be?*

USE THE GUIDE BELOW (based on current 2015-16 academic year expenses for a MN resident taking 15 credits/semester, living on campus in a double occupancy room and Husky anytime meal plan).

TUITION AND FEES.....	\$3,907/semester	.....\$7,814/year
HOUSING AND MEALS .....	\$3,965/semester	..... \$7,930/year
BOOKS AND SUPPLIES.....	\$600/semester	..... \$1,200/year
<b>TOTAL .....</b>	<b>\$8,472/SEMESTER.....</b>	<b>\$16,944/YEAR</b>

## STEP 2 *Gift aid*

	SEMESTER	YEAR
Scholarships		
Grants		
Other (Veteran's benefits, tuition waiver, etc.)		
<b>TOTAL GIFT AID</b>	<b>\$</b>	<b>\$</b>

## STEP 3 *Other aid / Resources*

	SEMESTER	YEAR
Student contribution (wages from work/savings)		
Parent/family support		
Federal student loans (Direct, Perkins)		
Private loans**		
<b>TOTAL RESOURCES</b>	<b>\$</b>	<b>\$</b>

## STEP 4 *Net price and remaining balance*

TO ESTIMATE THE NET PRICE, FILL IN THE BOXES BELOW.

SEMESTER	YEAR	
		<b>TOTAL EXPENSES</b>
-		
		<b>TOTAL GIFT AID</b>
=		
		<b>NET PRICE</b>
-		
		<b>TOTAL RESOURCES</b>
=		
<b>\$</b>	<b>\$</b>	<b>ESTIMATED REMAINING BALANCE*</b>

\* Students who have exhausted their funding resources may want to consider taking advantage of two payment plan options offered by St. Cloud State to assist in paying their remaining balances. Both a self-monitored, campus-based plan and an automated, outside vendor managed plan can be viewed at [www.stcloudstate.edu/srfs/finances/student-bill-payment.aspx](http://www.stcloudstate.edu/srfs/finances/student-bill-payment.aspx)

\*\* Many banks and credit unions provide educational loan options, commonly referred to as private loans. These loans may have higher interest rates than federal loans. St. Cloud State does not endorse any one lender. For further information on how to cover the estimated remaining balance with private loans, visit [www.stcloudstate.edu/srfs/finances/loans/default.aspx](http://www.stcloudstate.edu/srfs/finances/loans/default.aspx)

DECIDING WHICH COLLEGE TO ATTEND IS AN INCREDIBLY IMPORTANT DECISION. IT'S GOOD TO KNOW YOUR COSTS.

# FINANCING YOUR EDUCATION

## GLOSSARY OF TERMS

**Award Notification:** You must be admitted to St. Cloud State University and have a complete financial aid file before the Financial Aid Office can prepare your financial aid award. Available through your e-Services, the award notification lists the type and amount of financial aid you have been awarded.

**Bill:** A summary of your charges (e.g., tuition and fees, housing and meal plan, library or parking fines) at St. Cloud State University. Any scholarship, grants, or loans you have been awarded will first apply to your SCSU bill. Any aid in excess of your SCSU charges (bill) will be disbursed to you. It is your responsibility to view your bill in e-Services; bills will not be mailed.

**Budget:** The estimated cost of attendance (COA) used by the Financial Aid Office to determine your eligibility for financial aid. Your budget is not the amount that you pay. See also "Cost of Attendance."

**Cost of Attendance (COA):** Your COA includes costs for tuition and fees, housing and meal plan, and books and supplies. A modest amount is included in your COA for personal and miscellaneous costs. See also "Budget".

**Credit Completion Rate (CCR):** The number of successfully completed credit hours divided by attempted credit hours. Students are required to maintain a 66.67% credit completion rate to remain in good academic standing. The CCR includes completed credits at both SCSU and transfer schools.

**Dropped Course:** Dropping a course by the deadline means the course is removed from your class schedule, you are not charged for the course, and the course does not appear on your transcript. This is not the same as withdrawing from a course. See [www.stcloudstate.edu/srfs](http://www.stcloudstate.edu/srfs) and "Withdrawn Course" in this glossary.

**Enrollment levels for undergraduate financial aid:** Full-time: 12+ semester credits, except for the Minnesota State Grant which requires 15 semester credits; ¾-time: 9-11 semester credits; half-time: 6-8 semester credits; less than half-time: 5 semester credits or less. Federal loans and the student employment program require at least a 6-credit enrollment level.

**e-Services Account:** Online access to your financial aid, grades, registration, housing and meal plan, change of address, tuition and fees statement, and bill payment online.

**Expected Family Contribution (EFC):** Your EFC is calculated when you complete your FAFSA. The EFC is an index schools use to determine your eligibility for federal and state financial aid; *it is not the amount you pay for school.*

**Family Educational Rights and Privacy Act (FERPA):** Once you turn 18 years old, your privacy rights transfer to you. FERPA prohibits schools from providing non-directory information to anyone other than you (the student), including parents and family members, regardless of the age of the student or family support. For the complete policy see [www.ed.gov/policy/gen/guid/fpco/ferpa/index.html](http://www.ed.gov/policy/gen/guid/fpco/ferpa/index.html) or [www.stcloudstate.edu/srfs/information/data-privacy.aspx](http://www.stcloudstate.edu/srfs/information/data-privacy.aspx)

**Free Application for Federal Student Aid (FAFSA):** The FAFSA is the application for federal and state grants, loans, and work study. This online application ([www.fafsa.gov](http://www.fafsa.gov)) calculates your Expected Family Contribution (EFC).

**Holds on Your Account:** A hold may be placed on your account if you fail to comply with various university policies or meet established deadlines. Holds may prevent you from 1) registering for subsequent term(s), 2) accessing your grades, and 3) receiving a copy of your transcript.

**Loan Entrance Counseling:** Required of all first-time student borrowers under the Federal Direct (Stafford) Loan program. You only need to complete loan entrance counseling once as a first-time borrower.

- Federal Loans: Complete at [www.studentloans.gov](http://www.studentloans.gov).

**Loan Exit Counseling:** Required of federal loan borrowers once they are no longer enrolled in at least 6 credits. Complete loan exit counseling at [www.studentloans.gov](http://www.studentloans.gov).

**Master Promissory Note (MPN):** Required of all first-time student borrowers under the Federal Direct (Stafford) Loan program. Your legal agreement to repay your federal loan. The MPN may be completed at [www.studentloans.gov](http://www.studentloans.gov). You may sign the MPN with your Federal Student Aid (FSA) ID (the same used to sign your FAFSA).

**National Student Loan Data System (NSLDS):** NSLDS is the federal database with information about federal financial aid the student received. Access NSLDS at [www.nsls.ed.gov](http://www.nsls.ed.gov)

**NOTE:** *If you have just applied for aid, there will not be any information on NSLDS.*

**Registration Hold:** A block that prevents you from registering for classes for a specific semester. Registration holds can be put on for multiple reasons. Check with your academic advisor or the department that placed the hold for further information about how to clear the hold.

**Satisfactory Academic Progress (SAP):** You must maintain SAP to remain eligible for federal and state financial aid and to remain in good academic standing. Some private loans also require that you maintain SAP. Satisfactory academic progress includes cumulative SCSU grade point average, credit completion rate (courses attempted v. courses completed), and maximum timeframe (180 attempted credits). See the complete policy at [www.stcloudstate.edu/srfs/policies](http://www.stcloudstate.edu/srfs/policies)

**Withdrawn Course:** A course withdrawn from after the drop/add period and before the withdrawal deadline. The course appears on your transcript as a "W" grade; you are responsible for 100% of the charges for the course(s). This is not the same as dropping a course. Withdrawing from courses lowers your credit completion rate and may affect your academic and financial aid standing. See also [www.stcloudstate.edu/srfs/withdrawals](http://www.stcloudstate.edu/srfs/withdrawals), "Drop/Add Withdrawal and Refunds" and "Satisfactory Academic Progress (SAP)."

# ADVISING & REGISTRATION

## Advising & Student Transitions

Centennial Hall 366  
 (320) 308-6075  
 Email: [advising@stcloudstate.edu](mailto:advising@stcloudstate.edu)  
[www.stcloudstate.edu/advising](http://www.stcloudstate.edu/advising)



### NEED TO MAKE CHANGES TO YOUR SCHEDULE?

If you have questions about your schedule or you would like to change your schedule after your Advising & Registration Day, please do not hesitate to contact us at Advising & Student Transitions. You can access your schedule after your Advising Day by signing into e-Services. See page 35 of this Guide for instructions to access e-Services and registration instructions.

You may also call the Office of Records & Registration at (320) 308-2111 or email [registrar@stcloudstate.edu](mailto:registrar@stcloudstate.edu) with any questions about navigating e-Services.

## ADVISING & STUDENT TRANSITIONS

Advising & Student Transitions helps all first-year and transfer students make St. Cloud State University their new home and a place to flourish. We offer students individualized help with:

- Advising and Registration Days
- New Student Orientation/Huskies 1st Four Days
- Academic Collegiate Excellence (ACE) Program
- Mapworks
- Living and Learning Communities
- General Education Advising
- Exploring Academic Major & Minor Options
- Moving to a Program/Major Advisor
- Academic Resources and Services
- Intended Major Changes
- Graduation Requirements
- Academic Warning, Probation, & Suspension Advising

## EXPLORING & CHANGING YOUR INTENDED MAJOR

Advising & Student Transitions welcomes students to visit with an advisor for assistance with exploring major options. Students may change their intended major online through our website. Students may also stop by Advising & Student Transitions to change their intended major.

## WHO IS MY ADVISOR?

All first year students are assigned a professional advisor from one of the following advising areas: Advising & Student Transitions, Multicultural Academic Support Center, Honors, or Business Advising Center. Transfer students are assigned to an advisor from the department of their intended major. Transfer students who are undecided about their major are assigned to an advisor in Advising & Student Transitions.

## HOW DO I LOOK UP MY ASSIGNED ADVISOR?

Advisor assignments are made prior to each student's first semester of attendance at SCSU. Students can look up their assigned advisor as well as the advisor's contact information through the Advising & Student Transitions website. Until assigned an advisor, students may direct their questions to Advising & Student Transitions or, for transfer students, to the department of their intended major.

## MOVING TO A PROGRAM/MAJOR ADVISOR (FIRST YEAR STUDENTS)

New first year students will work with their assigned advisor and staff from the Career Services Center to engage in an academic exploration process to confirm, expand, and/or clarify the choice of an intended major. Most students will work with their assigned advisor for at least one academic year before moving to a program or major advisor. Highly motivated and committed students can expedite the process. Students will want to reach out to their advisor early in their first semester to discuss and design an individual path toward a declared major.

## MAPWORKS

Mapworks is a series of surveys and reports designed to help each new student reach his or her highest achievement level at SCSU. It allows a student to see what challenges lie ahead, and what services are available to meet those challenges. It results in a personalized report written to and about the student, as well as an abbreviated report for the student's advisor and residence hall director (or commuter advisor for commuter students). A Mapworks report uses information supplied by the student, so the report is unique to each individual student. Students will receive notification about how to begin their Mapworks report through their St. Cloud State email account at the beginning of their first semester at SCSU.



# ADVISING & REGISTRATION



## UNIVERSITY CATALOG

Students can access valuable information about majors, course descriptions, specific major requirements, and degree maps through the online University Catalog at: [catalog.stcloudstate.edu](http://catalog.stcloudstate.edu)

## ACCESS CODE/REGISTRATION WINDOW

Students do not need an access code to register for their first semester, but will need an access code from their assigned advisor to register for any subsequent semesters until admitted to a major.

Students are assigned a registration window (specific day and time assigned for registration) based on the amount of credits they have earned in transfer or directly from St. Cloud State. Students can find their assigned registration window by logging into e-Services. Students can take advantage of their registration window by obtaining their access code from their assigned advisor prior to the registration period.

## QUESTIONS TO ASK YOUR ADVISOR

- Are there any courses that could double count for my major and liberal education?
- Are there any pre-requisite courses required in my major that I should be aware of?
- What requirements must I complete in order to be eligible to apply for my major?
- Do I need a minor or one year of the same foreign language? Are there specific minors or languages you would recommend?
- What is the admission GPA requirement for my major? Are there any other GPA requirements I need to be aware of?
- When should I meet with you to discuss my academic plan for next semester and receive my access code?
- What is the best way to contact you when I have questions or to schedule an appointment with you?

## IF A COURSE YOU WANT IS FULL

**Remain diligent in checking the on-line registration system for open seats.** Students can make changes to their schedules through several days into the semester, so an opening could occur at any time during that period.

**Check e-Services for the "Add to Wait List" feature.** Students may add themselves to an electronic wait list for some courses in e-Services.

**Try to contact the professor in person, by stopping by his or her office, by phone, or by e-mail to politely inquire whether he or she anticipates being able to allow any additional students into the class.** This may not be possible, but the professor may also be able to offer other suggestions.

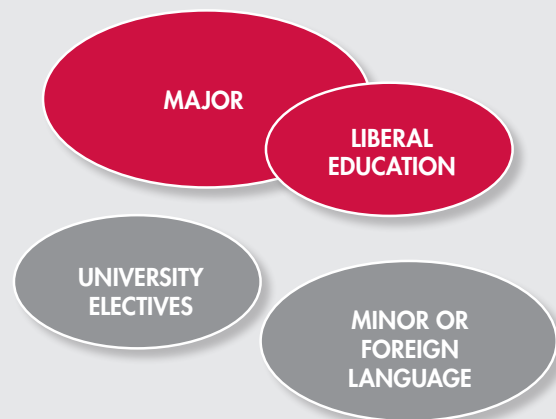
## GRADUATION REQUIREMENTS

To graduate from St. Cloud State students will need to complete the following requirements:

- Earn a minimum of 120 credits with a minimum 30 credits in residency at SCSU
  - Earn at least 40 credits at the upper level (300-499 labeled courses)
  - Complete a major\*
  - Complete the liberal education requirements (40 credits)
  - Complete 3 diversity courses. The diversity courses must come from three different rubrics or academic areas.
  - Meet the GPA requirements of your major
  - Apply for graduation (recommended to complete a semester prior to graduation). Applications for graduation can be found online at [www.stcloudstate.edu/srfs/graduation](http://www.stcloudstate.edu/srfs/graduation)
- \*Some majors require a minor or one year of the same foreign language.**

## A SNAPSHOT OF A BACCALAUREATE DEGREE

The red ovals are components students must complete to earn a baccalaureate degree from St. Cloud State. The grey ovals are possible components for students to complete based upon students' major or interests.



# ADVISING & REGISTRATION

## ACADEMIC PERFORMANCE STANDARDS

It is important for you to keep academic success in mind from the very beginning of your college career. The university sets minimum standards for satisfactory academic progress. Normally, students must maintain at least a 2.00 cumulative grade point average and a cumulative percentage of credits completed of approximately 66.67% to be in good academic standing. Eligibility for financial aid will also be affected if students do not maintain satisfactory academic progress.

### GRADE POINT AVERAGE (GPA) SCALE

A+	4.0	A	4.0	A-	3.67
B+	3.33	B	3.0	B-	2.67
C+	2.33	C	2.0	C-	1.67
D+	1.33	D	1.0	D-	.67
F, FN, 0					

The GPA calculation used to determine satisfactory academic progress is based only on SCSU coursework.

### CUMULATIVE PERCENTAGE OF CREDITS COMPLETED

To measure completion rate, take St. Cloud State University cumulative credits successfully completed plus credits accepted in transfer and divide by St. Cloud State University credits attempted plus credits accepted in transfer. Successful completion of credits means earning a passing grade (A+ through D- or S) in a course. Grades of F, FN, U, I, IP, W, and Z in a course count as non-completed credits.

**EXAMPLE:** Jason attended St. Cloud State for one term and attempted a total of 15 credits. After his first semester, he has earned 12 credits and has three credits of withdrawal. To determine his percentage of credits completed, Jason would divide the credits he earned (12) by the credits he attempted (15). Jason's completion rate would be 80 percent and he would be in good academic standing based on his percentage of credits completed.

Check withdrawal deadlines for each semester by login to e-Services and choosing View/modify course schedule. Further information can be found at <http://www.stcloudstate.edu/srfs/withdrawals>

See the current University warning/probation/suspension policy at [www.stcloudstate.edu/srfs/policies/sap.aspx](http://www.stcloudstate.edu/srfs/policies/sap.aspx)

## COLLEGE SUCCESS STRATEGIES

### ✓ Manage your time

- For every credit you register for, you should plan for 3 hours of your time per week: 1 hour in class and the other 2 hours spent outside of class studying.
- Make a daily schedule with class attendance as the top priority. Give yourself enough study time for homework, research, and projects.
- Use an academic planner, such as The Link, to keep track of assignment deadlines and test dates.

### ✓ Study smart

- Having trouble finding notes for class? Create your own personal system to stay organized. College life is much easier when you know where things are.
- Know how, when, and where to study. The campus offers many places to study, whether it is your residence hall, the library, student centers, or a coffee shop. Find a place where you are relaxed, focused, and motivated.

### ✓ Get to know your professors

- Ask for help when you need it. Professors are more than willing to help you when they can. They, too, want you to succeed.
- Professors are required to have weekly office hours that are noted on the course syllabus.

### ✓ Use your campus resources

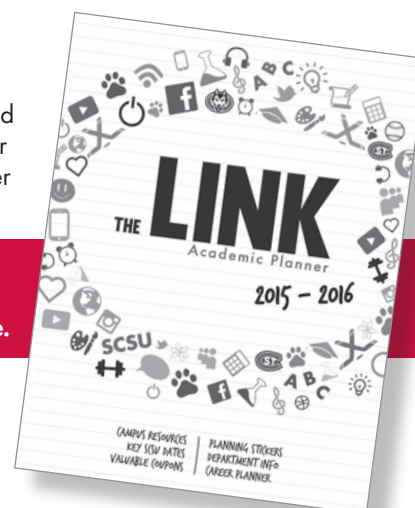
- Tutoring services are provided for students. Please see the Academic Learning Center website at: [www.stcloudstate.edu/alc](http://www.stcloudstate.edu/alc).
- See the list of academic resources on pages 19-20 of this guide

### ✓ Stay healthy

- Keep yourself active. Whether it is working out or playing intramural sports, remember to have fun!
- Eat healthy.
- Get enough sleep. If you can't get enough sleep at night, schedule a nap during the day.

Success at St. Cloud State starts with our Academic & Career Planner—**The Link!**

Available for purchase at the Husky Bookstore.



# ADVISING & REGISTRATION

## PLACEMENT TESTING

Brown Hall 115  
(320) 308-8378

[www.stcloudstate.edu/placementtesting](http://www.stcloudstate.edu/placementtesting)

At St. Cloud State University newly admitted students are able to take a placement exam(s) to determine proper course placement in English, math, and other subjects, such as biology and chemistry, determined by the student's intended major.

**Placement testing is NOT required of all students.** A student's ACT subtest scores in reading, English, and math may determine what classes a student should take. If ACT subtest scores are below a required level, placement testing may be needed or recommended. Students may also use placement testing to test directly into major level courses in math, chemistry, biology and other subjects.

**NOTE:** ACT scores are valid for 2-4 years depending on when the test was taken. Students should consult an advisor to determine if their ACT scores are valid for placement. If the scores are no longer valid, students will need to take the Accuplacer exam.

**Specific Course Placement According to ACT subtest scores can be found at [www.stcloudstate.edu/placementtesting/policy.aspx](http://www.stcloudstate.edu/placementtesting/policy.aspx).**

## Accuplacer Exams

### Reading Accuplacer Exam

Required for all students who score below 21 on the ACT reading subtest AND below 18 on the ACT English subtest AND do not have a Reading Comprehension Accuplacer score on file.

### Math Accuplacer Exam

Available for students who score below the required ACT math score and would like to place into higher level math, chemistry, biology and other classes required by their intended major.

Students wanting to place into the following courses will need to take the College Level Math Accuplacer exam:

- Trigonometry (MATH 113)
- Calculus (MATH 211 or MATH 221)
- Discrete Mathematics (MATH 271)

**NOTE:** Additional courses in departments such as Biology, Chemistry, Physics, Engineering, and Computer Science may require either a minimum Accuplacer math score, a math course prerequisite, or a minimum ACT math score.

## Major Specific Placement Exams

### Biology Placement Exam (for BIOL 202)

Recommended for students whose intended major is Nursing, Radiologic Technology, Pre-Occupational Therapy, or Pre-Physical Therapy. If a student does not pass the BIOL 202 placement exam, either BIOL 103 or BIOL 151 serve as prerequisites for BIOL 202. Students should consult an advisor to determine the most appropriate BIOL 202 course prerequisite based on intended major.

### Chemistry Placement Exam (for CHEM 141)

Available for students whose intended major is Nursing. If a student does not pass the CHEM 141 placement exam, CHEM 131 is a required prerequisite for CHEM 141 and requires a 20 ACT math score or appropriate score on the Math Accuplacer exam.

**For more information or to schedule a testing time, please visit the Placement Testing website or call our office.**



## RESPECT & RESPONSIBILITY PROGRAM

St. Cloud State University is committed to creating a community free of oppressive interactions and relationships and all forms of discrimination and harassment. We want all of our students to enjoy a healthy and engaging experience while in college. To help foster this environment, St. Cloud State University requires students to participate in a program titled Respect and Responsibility. This program consists of two educational components: one focused on sexual and relationship violence prevention; the second about the responsibilities of being a member of a diverse and welcoming community.

Specific instructions on how to complete this program will be sent to your St. Cloud State email account. If you do not complete this requirement, you will not be able to register for the following semester's classes. Consequently, it is very important that you check your email account regularly. Part One, is an online program and should be completed before classes begin. The instructions for Part One will come from the University Women's Center. Part Two, Community Through Diversity, is a workshop held on campus in small discussion groups. Instructions on how to register for the workshop will be sent from the Office of Student Life and Development. Watch for these messages two weeks before school starts and into the first month of classes. You can also find instructions for both parts of the program at these websites:

Part One: [www.stcloudstate.edu/womenscenter](http://www.stcloudstate.edu/womenscenter)

Part Two: [www.stcloudstate.edu/sld/respect.aspx](http://www.stcloudstate.edu/sld/respect.aspx)

Your participation in these educational sessions, and others like it, will result in a welcoming and productive environment that allows all students the opportunity to realize personal and academic success! We look forward to your involvement in this important program.



# ADVISING & REGISTRATION

## Office of Records and Registration

Administrative Services 118  
(320) 308-2111

[www.www.stcloudstate.edu/srfs](http://www.www.stcloudstate.edu/srfs)



## RECORDS AND REGISTRATION

The Office of Records and Registration is your source for information about:

- Student records/official transcripts
- Enrollment and degree verifications
- Diplomas and graduation
- Course schedules and course registration
- Transfer credit evaluation
- Veterans educational benefits
- Teacher licensure application processing
- Degree Audit Reports

## TRANSFER CREDITS

Transfer credits include courses taken at another institution, the International Baccalaureate program (IB), College Level Examination Program (CLEP), Advanced Placement (AP), and military credits. In order for the university to consider accepting these credits, you must have an official transcript sent from the institution where you received the credits to the Office of Records and Registration at St. Cloud State University. NOTE: If you have attended or are currently attending one or more Minnesota State Colleges or Universities (MnSCU), your official transcripts can be electronically retrieved by St. Cloud State University. To transfer credits from a MnSCU school, you must complete the MnSCU Electronic Transcript Evaluation Request form (which includes a list of schools that are part of the MnSCU system.) This form can be found at [www5.stcloudstate.edu/registrar/students/etranscriptrequest](http://www5.stcloudstate.edu/registrar/students/etranscriptrequest)

If you have questions about whether St. Cloud State University has received your transcript(s), please contact the Office of Records and Registration at (320) 308-5112. Your transfer credits will appear on your Degree Audit Report (see box below for instructions on how to access this report). The receiving college or university decides which credits transfer and whether those credits meet degree requirements in liberal education, major or minor courses, or university electives.

- Credits from other institutions accredited by agencies recognized by the Council on Higher Education Accreditation will also be evaluated for transfer, but additional documentation may be required.
- Quarter credits will be converted to semester credits upon transfer.
- All credits earned with a grade of "C-" or higher from a regionally accredited university or college-level institution are considered for credit transfer.
- Transfer credit will not be granted for remedial or non-degree credit as indicated by the sending institution.

If you have questions about credits in transfer after reviewing your degree audit with your advisor, please send an email to [registrar@stcloudstate.edu](mailto:registrar@stcloudstate.edu).

## DEGREE AUDIT REPORT

The Degree Audit Reporting System (DARS) is an online program that provides progress-toward-degree information for students. The degree audit report for students with intended majors will typically list liberal education requirements, credits taken at St. Cloud State, and credits accepted in transfer. Courses that are marked SEE DEPT on the Degree Audit are transferred courses that may be equivalent to a major or minor course/program requirement. In this case, departmental review is required. Please see our Frequently Asked Questions section on page 14 for further information. After acceptance to a major program of study, the degree audit report will indicate the requirements needed to complete a degree program.

### HOW TO ACCESS YOUR DEGREE AUDIT REPORT:

1. Access the St. Cloud State website at [www.stcloudstate.edu](http://www.stcloudstate.edu)
2. Click "myHuskyNet" on the top navigation bar
3. Enter your StarID and password
4. Click "e-Services" on the left
5. Click "Grades and Transcripts" on the left
6. Click "Interactive Degree Audit Report"

If you have any questions about your Degree Audit, please send an email to [registrar@stcloudstate.edu](mailto:registrar@stcloudstate.edu)

# ADVISING & REGISTRATION

## TRANSFERRING CREDITS

### FREQUENTLY ASKED QUESTIONS

#### What is the Liberal Education Program?

The LEP is the Liberal Education Program at St. Cloud State University. Also referred to as the Minnesota Transfer Curriculum (MnTC), it consists of Ten Goal Areas and 40 credits that must be completed with a GPA of 2.0. Along with major and minor requirements, the Liberal Education Program requirements must be completed prior to graduating from the university.

#### What are the requirements for credit transfer?

All credits earned with a grade for "C-" or higher from regionally accredited university or college-level institutions are considered for credit transfer. Transfer credit will not be granted for remedial or non-degree credits as indicated by the sending institutions.

#### Where do I send official transcripts after final grades have been posted?

To transfer credits from a MnSCU school, you must complete

the MnSCU Electronic Transcript Evaluation Request form (which includes a list of schools that are part of the MnSCU system). This form can be found at [www.stcloudstate.edu/srfs/transcripts](http://www.stcloudstate.edu/srfs/transcripts) If transcripts are coming from institutions outside of MnSCU send official transcript to

The Office of Records and Registration  
118, Administrative Services Building  
720 4th Ave. South  
St. Cloud, MN 56301

#### How do military credits transfer?

Students with military transcripts are awarded credit for both military courses and occupations by the ACE recommendation for credit. At the time of transfer, military courses and/or occupations initially come in as elective credits that count toward graduation. Military courses and/or occupations can be reviewed for equivalency by respective departments upon request. Contact Advising & Student Transitions (Centennial Hall 366) for further information.

#### I am an international student. How do my credits transfer?

After providing an official transcript and a course-by-course analysis by a NACES member institution, international student credit will transfer in as elective credits that count toward graduation. International coursework can be reviewed for equivalency by respective departments upon request. Contact Advising & Student Transitions (Centennial Hall 366) for further information.

#### Do you have transcripts from institutions outside of Minnesota?

Out-of-state student transfer credits may transfer in as elective credit. Elective credits do count toward graduation and can be reviewed for equivalency by respective departments upon request. Contact the Advising & Student Transitions (Centennial Hall 366) for further information.

#### I have taken the American Council for Teachers of Foreign Language's (ACTFL) Oral Proficiency Interview (OPI) examination. Can I get transfer credit for this?

With a copy of the proficiency certificate and an official American Council on Education (ACE) transcript, you can be awarded transfer credit based off of the ACE recommendation for credit.

#### My Math 070 and/or Math 072 equivalent course did not transfer and I have a grade of P or S.

As of Fall 2013, MATH 070 and MATH 072 equivalent courses in transfer will not be accepted with grades of P or S; only grades of C- or higher will be accepted.

#### What about my credits from for-profit institutions, trade schools and/or other institutions not regionally accredited (i.e. Minnesota School of Business)?

For-profit institutions, trade schools and/or other institutions that are not regionally-accredited college-level institutions but recognized by the Council for Higher Education Accreditation (CHEA) are typically awarded Technical Training (TECH) credit. The maximum amount of Technical Training credit that can be awarded is 16 credits.

#### I've been admitted and need to register for classes but my courses have not yet been evaluated.

If this is your case, then bring your unofficial transcript with you when you plan to register for courses with your advisor.

## INTERPRETING THE DEGREE AUDIT REPORT

#### Did my course not transfer? It says that it transferred as an Elective (ELEC) or Technical Training (TECH) credit.

Yes, your course did transfer and is counting toward the number of credits you need to graduate. Courses that transfer in as elective (ELEC) and/or Technical Training (TECH) credits do count toward graduation, unless otherwise indicated on the Degree Audit Report.

#### What does SEE DEPT mean on my Degree Audit Report?

Courses marked SEE DEPT on the Degree Audit are transferred courses that may be equivalent to a major or minor course/program requirement.

In this case, departmental review is required. Please see the Getting Transfer Equivalencies section for information about departmental reviews for equivalency.

## GETTING TRANSFER EQUIVALENCIES

#### How do I get a department to review my transfer course for equivalency?

Courses marked SEE DEPT should be submitted to departments for course equivalency review. For assistance with referrals to appropriate departments for course equivalency review, please contact Advising & Student Transitions.

#### A department approves my transfer course as equivalent. Now what?

The department must notify the Office of Records & Registration by memo of their transfer course approval so that your student record may be updated. Also, please do get a copy of the approval for your records.

#### A department denies my transfer course as equivalent. Now what?

If a department determines that your course is not equivalent to a St. Cloud State University course, contact the Advising & Student Transitions (Centennial Hall 366) to see if the course fits into a Liberal Education Program (LEP) Goal Area.

# PROCRASTINATION LEADS TO THE BOTTOM OF THE WAIT LIST.

## ONLINE REGISTRATION

Students can access e-Services, the online registration/student information system, through the myHuskyNet student portal. See page 35 of this Guide for instructions to access e-Services.

## NEED HELP WITH REGISTRATION?

**HELP Line:** (320) 308-2111 or  
email: [registrar@stcloudstate.edu](mailto:registrar@stcloudstate.edu)

### Fall/Spring Hours:

8:00 a.m.-4:30 p.m., Monday-Friday

### Summer Hours:

7:30 a.m.-4:00 p.m., Monday-Friday

## REGISTRATION DEADLINES

A registration calendar for each semester is posted on the Office of Records & Registration website: [www.stcloudstate.edu/srfs](http://www.stcloudstate.edu/srfs).

Each term has deadlines for the following:

### **\*Last day to drop with no "W" and 100% refund**

5<sup>th</sup> day of the semester is the last day that students can drop a full term class without that full term class appearing on the student's transcript.

### **\*Last day to add courses without permission**

5<sup>th</sup> day of the semester is the last day students can add a class without special permission. Check with the academic department/instructor of the class for further information.

### **Last day to drop with "W"**

This date is the last day students can drop a class and receive a grade of 'W' on their transcript. The grade of 'W' will not affect the GPA but will affect the student's credit completion rate. Withdrawing from all courses may result in a financial obligation to the University if you are living in the residence halls or receiving a grant, scholarship, loan, or other form of financial aid.

**NOTE:** Drop and withdrawal deadline dates are available through login to e-Services. Click on the course title link and scroll to the heading "Add/Drop/Withdraw".

\*Registration deadlines vary for summer session courses. Check e-Services for specific dates.





# CAREER SERVICES

## Career Services Center

Centennial Hall 215  
(320) 308-2151

[www.stcloudstate.edu/careerservices](http://www.stcloudstate.edu/careerservices)

## 4 Year Career Development Path

1  
Year

- Attend your Advising & Registration Day
- Participate in Huskies First Four/Orientation
- Visit Main Street to learn about clubs and organizations
- Develop a resume for part-time jobs, internships or service-learning projects
- Find a part-time job to enhance career choice and career skills—visit [www.scsucareers.com](http://www.scsucareers.com)
- Take a self-assessment for career exploration
- Use the Academic Learning Center to enhance academic success
- Attend Career Services seminars and events to get prepared for your career
- Utilize the Career Center's resource and computer area for career information
- Visit with your advisor to register for next semester's classes
- Visit the Career Services Center and our website to learn more about our services

2  
Year

- See a career counselor to clarify your choices
- Identify potential careers and academic majors
- Take COLL 111, Career and Life Planning, to help you decide your career path
- Visit with a faculty member for information on major programs
- Declare a major and meet with your advisor to plan coursework
- Establish short-term and long-term goals related to your career
- Attend the Career Prep Party, and other Career Center events
- Visit the Career Center to set up an appointment to discuss internship options and resources

3  
Year

- Outline goals related to your major with a faculty advisor
- Identify mentors; conduct informational interviews with alumni and employers
- Attend job fairs to learn about companies and opportunities
- Refine resume and job search strategy
- Attend career events and employer panels
- Explore job market requirements to maximize skill development
- Participate in internship or job related experiences
- Research graduate or professional school programs and review application requirements (take entrance exams during the summer prior to your senior year)

4  
Year

- Start your job search early—don't wait until after you graduate
- Develop marketing strategies for your job search
- Attend all Career Center events that feature employers and employment preparation instruction
- Refine resume and job search materials
- Participate in on-campus interviewing
- Attend job fairs for your career area
- Network, Network, Network: Create a LinkedIn account if you haven't already
- Talk with individuals (professors, current or previous employers, mentors) who will serve as your references and give them a copy of your resume

**\*If you plan on graduating in four years, talk to your academic advisor and career services about creating a plan.**

# CAREER SERVICES

## Choosing a Major

Nationwide, approximately 25% of college students start college as “undecided” majors. Don’t choose a major just because your friend said it was fun. It is good to research important factors of a career path before choosing a major. This includes expected salary, job prospects, experience required, degree required, location, and more. Come check out all of the resources we have to offer at Career Services Center.

## How to survive college

**Start slow**—don’t commit to working a lot of hours immediately

**Plan ahead**—plan your class and work schedules as far ahead of time as possible and use your free time productively

**Be flexible**—make sure you work around class commitments as these are your obligations as a student

**Create a budget**—determine your financial needs so you know how much money you need to make

**Eat well, exercise and get plenty of rest**—stress reduction increases your brain’s ability to function

## Students who participate in internships are 38% more likely to get a job offer!

- Start looking for an internship early. The more experience, the higher likelihood of getting a job offer!
- Research employers you would be interested in working for. Set up informational interviews.
- Attend career events to connect with employers and share your employment goals and resume.
- Create an account on [www.scsucareers.com](http://www.scsucareers.com) for internship search and on-campus interviews.

## FOCUS2 Self-Assessment

FOCUS2 is an online career and education planning system that is available FREE of charge to SCSU students. It is a self-guided, interactive program designed to help you select the right college major and plan your career based on your personal interests, values, skills, personality and aspirations. You will be able to explore career fields and major areas of study compatible with your assessment results.

To take FOCUS2 go to:  
[www.focusCareer2.com/Portal/Login.cfm?SID=468](http://www.focusCareer2.com/Portal/Login.cfm?SID=468)

Your keycode is: husky

- Complete the New User Account form, then click submit.
- Before you explore careers, make sure you complete all sections of the Career Readiness and Self-assessment for accurate results.

## Other Web Resources

### Occupational Outlook Handbook

[www.bls.gov/oco](http://www.bls.gov/oco)

The definitive source of occupational information in the United States

### ISEEK

[www.iseek.org](http://www.iseek.org)

A comprehensive site for exploring careers and educational choices in Minnesota

### NACE Job Web

[www.jobweb.com](http://www.jobweb.com)

Links to career planning and research sites

### O\*NET

[www.onetonline.org](http://www.onetonline.org)

Comprehensive information on attributes and characteristics of most occupations



## Check Out Your Possibilities!

The Career Planner is a great tool you can use to help reach your goals.

- Detailed 4-Year Planner
- Graphs and Statistics
- Tips on Choosing a Major/Minor
- Internship Information
- Cover Letter Advice
- Resume Writing Tips
- Interviewing Advice
- Graduate School Help

### Find and Follow Us

For great career tips, and chances to win awesome prizes!



[www.stcloudstate.edu/careerservices](http://www.stcloudstate.edu/careerservices)  
320.308.2151 [careerservices@stcloudstate.edu](mailto:careerservices@stcloudstate.edu)

# STUDENT RESOURCES

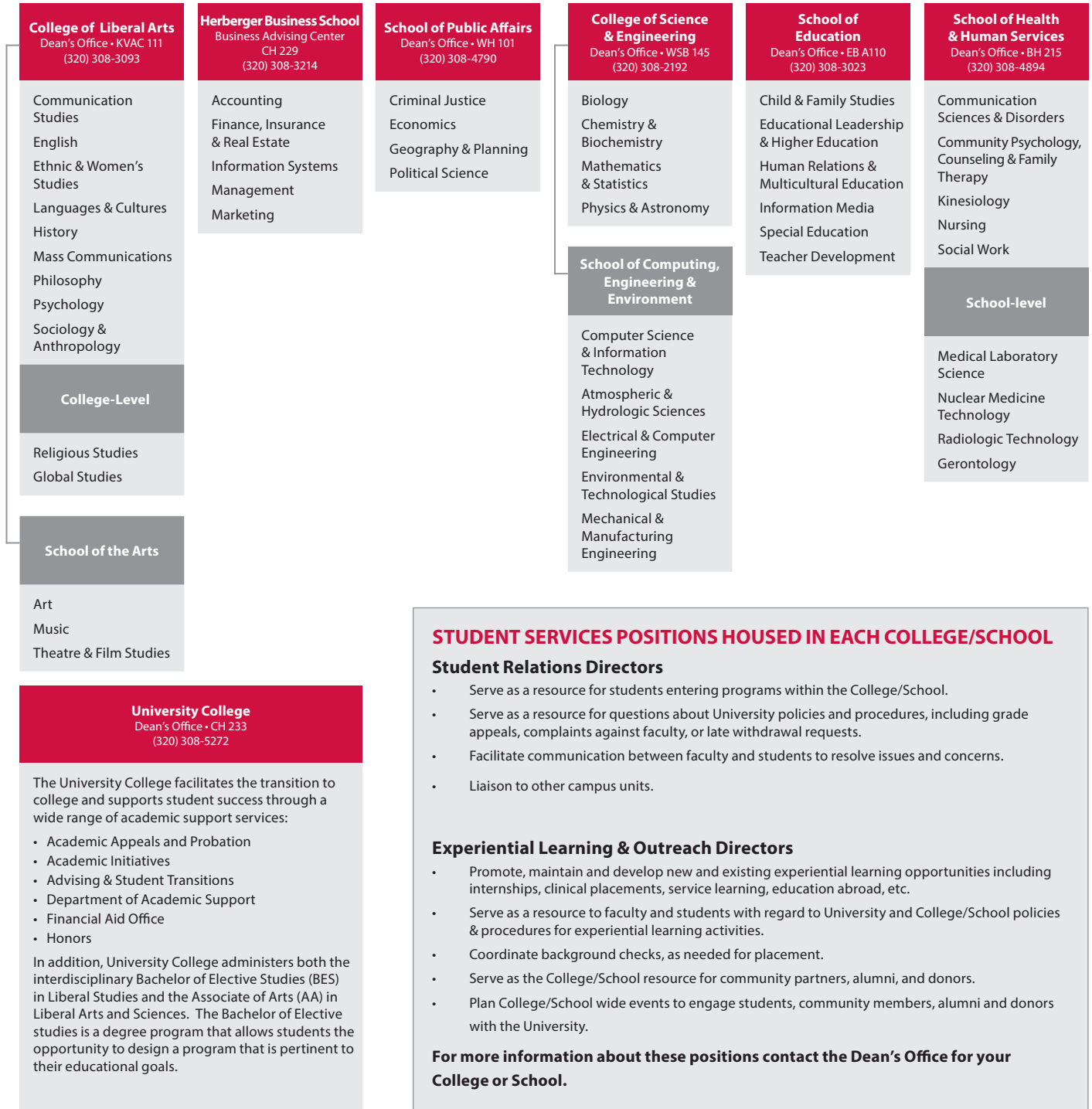


## ST. CLOUD STATE UNIVERSITY

### ACADEMIC ORGANIZATIONAL CHART

#### ST. CLOUD STATE UNIVERSITY

is organized into six autonomous colleges and schools with two schools embedded in each of the colleges.





# STUDENT RESOURCES

## STUDENT RESOURCES—ACADEMIC

### Academic Collegiate Excellence (ACE) Program

ACE students benefit from additional layers of support in their transition to university life through outreach from dedicated ACE advisors and program teaching staff. The program focuses on two courses that are built into students' first semester schedule that aim to develop skills in reading, study strategies and the transition to college.

**Location:** Centennial Hall 366

**Phone:** (320) 308-6075

**E-mail:** fytp@stcloudstate.edu

[www.stcloudstate.edu/ace](http://www.stcloudstate.edu/ace)

### Academic Learning Center (ALC)

Students may visit the Academic Learning Center to receive assistance or advice concerning studying, learning, and reading. The ALC also offers, free of charge, peer tutoring in a variety of academic subjects.

**Location:** Centennial Hall 236

**Phone:** (320) 308-4993

**E-mail:** alc@stcloudstate.edu

[www.stcloudstate.edu/alc](http://www.stcloudstate.edu/alc)

### Advising & Student Transitions

The Advising & Student Transitions staff provide students assistance as they consider options for classes and work through their academic programs. For more information on services provided, see p. 9.

### Athletes for Success in the Classroom (ASC)

This program, working in partnership with the athletic department, provides academic support and a positive learning environment for student athletes. Services provided include help with time management and study skills, tutoring, academic counseling and advising, assistance with course scheduling, and monitoring academic progress.

**Location:** 827 4<sup>th</sup> Avenue South, Richard R. Green House

**Phone:** (320) 308-5392

**E-mail:** mss@stcloudstate.edu

[www.stcloudstate.edu/asc](http://www.stcloudstate.edu/asc)

### Community College Connection (CCC) Program

This partnership program between St. Cloud Technical and Community College (SCTCC) and St. Cloud State University (SCSU) provides an excellent opportunity to begin the college experience. The program is offered to first year applicants who do not qualify for direct admission to SCSU programs. Connection students take classes taught by SCTCC faculty on the campus of SCSU and are encouraged to live on-campus. They also have access to most services, resources, and activities available to SCSU students. After completing the requirements of the program, Connection students are able to transfer to St. Cloud State.

**Location:** Centennial Hall 366

**Phone:** (320) 308-1047

**E-mail:** ccc\_program@stcloudstate.edu

[www.stcloudstate.edu/cc](http://www.stcloudstate.edu/cc)

### Center for International Studies (CIS)

The Center for International Studies strives to create a community international scholar. CIS provides services and support to international students and scholars, students participating in education abroad programs and much more!

**Location:** Lawrence Hall 101

**Phone:** (320) 308-4287

**E-mail:** international@stcloudstate.edu

[www.stcloudstate.edu/internationalstudies](http://www.stcloudstate.edu/internationalstudies)

### International Student and Scholar Services (ISSS)

ISSS provides information, assistance, advocacy, guidance and support to the international students and scholars at SCSU. ISSS can assist with:

- Transitioning to the United States and the university
- Employment authorization
- Maintaining status and government resources
- Scholarships/financial information
- Health insurance

**Phone:** (320) 308-4287

**E-mail:** iss@stcloudstate.edu

[www.stcloudstate.edu/internationalstudents](http://www.stcloudstate.edu/internationalstudents)



### Education Abroad

Visit us to learn about studying abroad opportunities. Choose from more than 30 opportunities across the globe that compliment your major and enable you to gain skills, knowledge and make you more marketable.

Education abroad will help you:

- Improve your employment opportunities
- Learn about another culture first hand
- Gain skills in cross-cultural communication
- Gain confidence and adaptability

**Location:** Lawrence Hall

**Phone:** (320) 308-0119

**E-mail:** educationabroad@stcloudstate.edu

[www.stcloudstate.edu/educationabroad](http://www.stcloudstate.edu/educationabroad)

# STUDENT RESOURCES

## COSE Tutoring Center

Free tutoring support in College of Science and Engineering classes are available to all St. Cloud State University students. Chemistry, Mathematics, and Physics is available in ISELF 332. Statistics and Electrical and Computer Engineering (ECE), Atmospheric and Hydrological Sciences (AHS) and Mechanical and Manufacturing Engineering (MME) are in ISELF 227. Biology tutoring is available in WSB 202-1. Math Education tutoring can be found in ECC 136. Tutoring is available on a walk-in basis. Our tutors do not take appointments. Please bring your assignment, SCSU ID card, and questions about your homework. The goal of our tutors is to help you become a more independent learner. Tutors are not permitted to do any of your work for you, including checking or correcting your homework or teaching you course content because you have been absent from class. You will be asked to check in when you arrive at the tutoring center and check out as you leave. You may see a tutor more than once per day, but you will be asked to check in before each tutoring session. The tutoring center can also be used to meet with study groups.

[www.stcloudstate.edu/cose/resources/tutoring](http://www.stcloudstate.edu/cose/resources/tutoring)

## Honors Program

The University Honors Program (UHP) is a highly selective interdisciplinary program that provides the liberal arts portion of a baccalaureate degree. UHP offers bright, motivated students the opportunity to take charge of their education and engage with faculty and other like-minded high achieving students.

**Location:** Centennial Hall 216

**Phone:** (320) 308-6623

**E-mail:** [honors@stcloudstate.edu](mailto:honors@stcloudstate.edu)

[www.stcloudstate.edu/honors](http://www.stcloudstate.edu/honors)

## Math Skills Center

The faculty and tutors of the Math Skills Center are dedicated to providing students with opportunities for success in studying mathematics. The Center's goal is to help students prepare for studying college level mathematics by mastering basic skills, developing effective study habits, and achieving the confidence level needed for success. Peer tutoring is available for the courses offered by the Math Skills Center. These courses include Basic Mathematics Concepts (Math 070) and Intermediate Algebra (Math 072).

**Location:** Centennial Hall 224

**Phone:** (320) 308-3840

**E-mail:** [mathskl@stcloudstate.edu](mailto:mathskl@stcloudstate.edu)

[www.stcloudstate.edu/mathskills](http://www.stcloudstate.edu/mathskills)

## Miller Center Library

The Miller Center Library offers a wide variety of services for student research needs, from study rooms to assistive technology. Librarians are available to help students pick a topic, find articles, create a bibliography, and more.

**Location:** West wing of the James W. Miller Learning Resources Center

**Phone:** (320) 308-2084

**E-mail:** [lrtsinfo@stcloudstate.edu](mailto:lrtsinfo@stcloudstate.edu)

[lrts.stcloudstate.edu/library](http://lrts.stcloudstate.edu/library)

## Multicultural Academic Support Center

The Multicultural Academic Support Center provides direct academic services to students and helps them build the skills needed to successfully complete college. It also serves as a focal point in interaction between students, faculty, and the campus community. Services available at the Center are academic advising, assistance with class scheduling, monitoring of academic progress, leadership development, a computer lab, and a quiet study area.

**Location:** Centennial Hall 221

**Phone:** (320) 308-3952

**E-mail:** [mss@stcloudstate.edu](mailto:mss@stcloudstate.edu)

[www.stcloudstate.edu/mss](http://www.stcloudstate.edu/mss)

## Multicultural Tutoring Program

The Multicultural Tutoring Program provides students with tutoring services for most general education classes on a daily basis or by request at the Richard R. Green House.

**Location:** 827 4<sup>th</sup> Avenue South, Richard R. Green House

**Phone:** (320) 308-5392

**Email:** [mss@stcloudstate.edu](mailto:mss@stcloudstate.edu)

[www.stcloudstate.edu/mss](http://www.stcloudstate.edu/mss)

## Records and Registration

The Office of Records and Registration is the source for information about student records/official transcripts, enrollment and degree verifications, diplomas and graduation, course schedules and course registration, transfer credit evaluation, veteran's educational benefits, teacher licensure application processing, and the degree auditing report system. For more information, see page 13.

**Location:** Administrative Services 118

**Phone:** (320) 308-2111

**E-mail:** [registrar@stcloudstate.edu](mailto:registrar@stcloudstate.edu)

[www.stcloudstate.edu/srfs](http://www.stcloudstate.edu/srfs)

## Student Disability Services

Student Disability Services provides support services for students with a physical, cognitive or mental/emotional disability. As part of St. Cloud State's response to Section 504 of the Rehabilitation Act of 1973 and the Americans with Disabilities Act (ADA), the department facilitates and coordinates services leading to the academic success of students with disabilities.

**Location:** Centennial Hall 202

**Phone:** (320) 308-4704 or (320) 308-4080

**E-mail:** [sds@stcloudstate.edu](mailto:sds@stcloudstate.edu)

[www.stcloudstate.edu/sds](http://www.stcloudstate.edu/sds)

## The Write Place

The Write Place offers online and face to face assistance to individuals and groups at every stage of the writing process from brainstorming ideas, to revising drafts, to polishing the final draft. The staff members assist students with papers from every field and level and also with job application materials. Students may make 30, 60 or 90 minute appointments at the main location or library location.

**Location:** 51 Building room 117, and the Miller Center 1<sup>st</sup> floor

**Phone:** (320) 308-2031

**E-mail:** [writeplace@stcloudstate.edu](mailto:writeplace@stcloudstate.edu)

[www.stcloudstate.edu/writeplace](http://www.stcloudstate.edu/writeplace)

# STUDENT RESOURCES

## STUDENT RESOURCES—FINANCIAL

### Banking Services

There are two on-campus providers of banking services.

- **TCF Bank** provides a full range of banking products and services including American Express Traveler's Checks, coin counting, and Visa Gift Cards. A TCF Campus Card Student Checking account can be linked to the St. Cloud State Campus Card ID, which turns the ID into an ATM Card. Students receive free custom-designed St. Cloud State checks, free mobile and online banking and bill pay, and a free St. Cloud State sweatshirt with their first deposit. Also, TCF will waive its fee for up to four withdrawals at non-TCF ATMs each statement period.

**Location:** Atwood Memorial Center 163

**Phone:** (320) 308-6105

[www.tcfbank.com](http://www.tcfbank.com)

- **Affinity Plus Federal Credit Union** offers banking and financial services to students.

**Location:** Atwood Memorial Center 164

**Phone:** (320) 259-7187

[www.affinityplus.org](http://www.affinityplus.org)

### Business Services

Business Services staff members can assist students with questions about tuition and fee accounts and bill payment.

**Location:** Administrative Services 123

**Phone:** (320) 308-4012

**E-mail:** [businessservices@stcloudstate.edu](mailto:businessservices@stcloudstate.edu)

[www.stcloudstate.edu/srfs](http://www.stcloudstate.edu/srfs)

### Employment Resources for Students

[www.scsucareers.com](http://www.scsucareers.com) is your one-stop shop for all positions:

- Work study jobs on and off campus
- Part-time jobs on and off campus
- Internships
- Employment after graduation
- GoinGlobal for domestic and international jobs and internships

### Work Study Positions Contact:

Financial Aid Office

**Phone:** (320) 308-2047

**E-mail:** [financialaid@stcloudstate.edu](mailto:financialaid@stcloudstate.edu)

[www.stcloudstate.edu/srfs](http://www.stcloudstate.edu/srfs)

### Part-Time, Internships and Employment after Graduation Contact:

Career Services Center

**Phone:** (320) 308-2151

**Email:** [careerservices@stcloudstate.edu](mailto:careerservices@stcloudstate.edu)

[www.stcloudstate.edu/careerservices](http://www.stcloudstate.edu/careerservices)

*Career Services can assist with resume development and preparation for interviews.*

### Financial Aid

The Financial Aid Office administers federal and state grants, student employment, and loans. Staff members are available to answer questions on an appointment or a walk-in basis.

**Location:** Administrative Services 106

**Phone:** (320) 308-2047

**E-mail:** [financialaid@stcloudstate.edu](mailto:financialaid@stcloudstate.edu)

[www.stcloudstate.edu/srfs](http://www.stcloudstate.edu/srfs)

## STUDENT RESOURCES AND POLICIES—HEALTH & SAFETY

### Counseling and Psychological Services (CAPS)

Counseling and Psychological Services (CAPS) is a department within the Division of Student Life and Development that helps both undergraduate and graduate students. We offer free and confidential personal counseling and consultation services to students so they can cope more effectively with personal, mental health, and academic issues that arise in their lives. CAPS is the primary mental health provider for students at St. Cloud State University and is accredited by the International Association of Counseling Services (IACS).

**Location:** Stewart Hall 103

**Phone:** (320) 308-3171

**E-mail:** [counseling@stcloudstate.edu](mailto:counseling@stcloudstate.edu)

[www.stcloudstate.edu/counseling](http://www.stcloudstate.edu/counseling)

### Public Safety

The St. Cloud State University Public Safety Department strives to provide the safest environment possible in which education may be pursued without the fear or presence of crime or violence. The Public Safety Department supports and educates students, employees, and visitors of the university in the area of personal safety and provides response in situations of need. The department provides a variety of services in an attempt to educate and maintain personal safety:

- **Blue Light Phones**

These emergency and elevator call box telephones are located throughout the campus. The phones are made visible by a blue light globe on the top of these stations. These blue light and elevator call box phones should be used in time of need (emergencies, safety escorts, vehicle jump starts, etc.). When activated, these phones dial directly to the Public Safety Communications Center.

- **Safety Escort Program**

A Safety Escort Program is provided by Public Safety for members of the University community. Safety escorts may be requested by calling (320) 308-3333. The map displaying service boundaries may be found on the Public Safety website.

**Location:** Public Safety Building (4<sup>th</sup> Avenue Parking Ramp)

**Phone:** (320) 308-3333

**E-mail:** [pubsafe@stcloudstate.edu](mailto:pubsafe@stcloudstate.edu)

[www.stcloudstate.edu/publicsafety](http://www.stcloudstate.edu/publicsafety)

### Recovery Community

The St. Cloud State University Recovery Community provides a safe and welcoming environment where students in recovery can receive support while working to obtain a college degree. Our collegiate recovery community supports those who have struggled with substance dependence and now recognize the need to completely abstain and make a commitment to quality sobriety as they pursue a college education at St. Cloud State University.

The St. Cloud State University Recovery Community consists of the following key elements:

- Safe, supportive on-campus housing
- Weekly support meetings
- Sober social events and activities
- On-site support staff
- Scholarships

# STUDENT RESOURCES

- Peer to peer support
- Campus and community information, referrals and advocacy
- Community service opportunities

**Phone:** (320) 308-6119

[www.stcloudstate.edu/reslife/reshalls/RecoveryCommunity.asp](http://www.stcloudstate.edu/reslife/reshalls/RecoveryCommunity.asp)

## Star Alert

Star Alert, a free SCSU emergency notification system, makes it possible for students to receive notice—by cell phone and/or



email—of campus-related emergencies that threaten life, safety or severely impact campus operations.

Students are automatically enrolled in Star Alert annually. In an emergency, Star Alert will send a text message to the cell number(s) and/or email address(es) provided to SCSU via your e-Services account or application. Additional cell numbers and/or email addresses may be added at the website listed below. Notifications identified as “Star Alert” messages will note the nature of the emergency, what action, if any, you are to take, and where to find more information. Star Alert also will let you know if campus is closed or if classes are delayed or cancelled.

Star Alert notification is in addition to any message the university sends to all St. Cloud State email addresses when there is an emergency. Depending on the nature and severity of the emergency, other mechanisms may include alerts on the St. Cloud State website and voicemail messages on campus phones.

[www.stcloudstate.edu/emergency/staralert.aspx](http://www.stcloudstate.edu/emergency/staralert.aspx)

## Student Handbook and Student Code of Conduct

The Student Handbook contains many of the policies and procedures which all students are expected to be familiar with and follow as members of the SCSU community. The most basic of these is the Student Code of Conduct, which assists all students in understanding their rights, responsibilities and privileges as a St. Cloud State University student. The Student Handbook and Student Code of Conduct are located at:

[www.stcloudstate.edu/studenthandbook](http://www.stcloudstate.edu/studenthandbook)

**Location:** Student Life and Development, Atwood 219

**Phone:** (320) 308-3111

**E-mail:** [sld@stcloudstate.edu](mailto:sld@stcloudstate.edu)

[www.stcloudstate.edu/sld](http://www.stcloudstate.edu/sld)

## Student Health Services

Student Health Services is an accredited medical clinic staffed by licensed medical doctors and nurse practitioners. The clinic provides a full range of medical care for currently enrolled students. After-hour care and weekend care is available at community urgent care centers and the St. Cloud Hospital Emergency Trauma Center. The on-campus pharmacy, located in Student Health Services, provides prescription services and stocks many over-the-counter products. The pharmacy has established contracts with over 40 insurance carriers and is able to bill them directly. Health Promotions provides health education for individuals or groups of students. Specific issues addressed include stress, contraception, sexually transmitted infection prevention, and nutrition.

Student Health Services has established contracts with several major health insurance companies. Students with these insurance plans can have their charges billed directly by presenting a valid insurance card with policy information.

Currently enrolled students can access the Health Services patient portal at [myhealthservices.stcloudstate.edu](http://myhealthservices.stcloudstate.edu) to schedule an appointment, refill a prescription, communicate with their Health Services provider, or view their Health Services account summary.

## Immunization Form

**NOTE:** Students who graduated from a Minnesota high school in 1997 or later are exempt from this requirement.

All other students must show proof of immunity to measles, mumps, rubella, diphtheria and tetanus during their first semester at St. Cloud State. Diphtheria and tetanus date must be within the last ten years. The form can be completed online at:

[www.stcloudstate.edu/healthservices/immunization.aspx](http://www.stcloudstate.edu/healthservices/immunization.aspx)

**Location:** Hill Hall, First Floor

**Phone:** (320) 308-3191

**E-mail:** [healthservices@stcloudstate.edu](mailto:healthservices@stcloudstate.edu)

[www.stcloudstate.edu/healthservices](http://www.stcloudstate.edu/healthservices)

## Tobacco Policy

St. Cloud State University is a tobacco-free campus. The tobacco-free policy is enforced on all university-owned property including the River Walk and part of Barden Park. It will not be enforced on city streets



ST. CLOUD STATE UNIVERSITY™

and city sidewalks that are adjacent to campus.

Exceptions will be made in accordance with the

Minnesota Clean Indoor Air

Act, MS. 144.4167, which allows tobacco use in Traditional Native American ceremonies, scientific studies, and theatrical productions. Further, tobacco use will be permitted inside private motor vehicles on University property as long as tobacco users demonstrate respect for individuals and the environment. For more information on the policy and information about help for tobacco cessation, see our campus Health and Wellness website:

[www.stcloudstate.edu/tobaccofree](http://www.stcloudstate.edu/tobaccofree)

## U-Choose Alcohol and Other Drug Prevention Program

U-Choose, the Alcohol and Other Drug Prevention Program at St. Cloud State University, utilizes a comprehensive approach specifically designed for college students.



The program is based on the understanding that students want to achieve success academically, personally, and professionally.

Empowering students to make informed choices about alcohol use, U-Choose helps students understand how high-risk drinking can lead to negative consequences; doing so in a way that is engaging, fun, and interactive.

We encourage the college community to join with us as we employ multiple strategies including:

- providing education
- changing the normative environment
- promoting alcohol-free social options
- developing alcohol policies and supporting consistent of enforcement
- conducting early intervention
- providing appropriate referrals



# STUDENT RESOURCES

In order to be effective in our approach we value the following key components of effective prevention: assessment and evaluation, strategic planning, media advocacy and publicity of efforts, senior administrative support, student involvement, and building relationships with key stakeholders. Since 2010, U-Choose has served over 25,000 students

**Location:** Atwood Memorial Center 219

**Phone:** (320) 308-6175

**E-mail:** [uchoose@stcloudstate.edu](mailto:uchoose@stcloudstate.edu)

[www.stcloudstate.edu/uchoose](http://www.stcloudstate.edu/uchoose)

## Women's Center—Gender Violence Prevention Program

Preventing and addressing the problems of sexual assault, relationship violence and stalking are fundamental to student safety, equity and success. The Gender Violence Prevention Program at the Women's Center offers individual support, advocacy, referrals and support groups. We work closely with other campus and community services to establish survivor-centered responses and coordinated care. In addition to serving survivors of gender violence, prevention education is core to program goals.

**Location:** Women's Center

**Phone:** (320) 308-4958

**Coordinator:** (320) 308-3995

**E-mail:** [womenscenter@stcloudstate.edu](mailto:womenscenter@stcloudstate.edu)

[www.stcloudstate.edu/womenscenter](http://www.stcloudstate.edu/womenscenter)



## STUDENT RESOURCES— PARKING & TRANSPORTATION

### Bus Services

#### Jefferson Bus Lines

Jefferson Bus Lines offers bus transportation from St. Cloud to major cities such as Minneapolis, Fargo, and Winnipeg. Buses depart daily from the Metro Bus Transit Center (510 1<sup>st</sup> Street South).

Tickets for Jefferson Bus Lines may be purchased at the Atwood Memorial Center Information Desk.

**Phone:** (800) 451-5333

**E-mail:** [info@jeffersonlines.com](mailto:info@jeffersonlines.com)

[www.jeffersonlines.com](http://www.jeffersonlines.com)

#### Metro Bus (Local)

Metro Bus provides bus service throughout St. Cloud, Sartell, Sauk Rapids and Waite Park, seven days a week. The U-Pass Free Ride program allows SCSU students to ride any Metro Bus Fixed Route all year for free by swiping their SCSU Campus Card through the farebox. The main bus stop on campus is located at the Miller Center, with several routes serving SCSU.

Use Metro Bus to travel between off campus housing and SCSU, go shopping, and get to and from appointments off campus. Route information and bus schedules are available in the Metro Bus display in Atwood, Metro Bus website or at the Metro Bus Transit Center. Metro Bus also staffs an information table the first week of each semester in the Miller Center. Metro Bus Dial-a-Ride service is not part of the U-Pass Free Ride program, and is available for those whose disabilities prevent them from being able to ride the Fixed Route system.

**Phone:** (320) 251-RIDE (7433)

[www.ridemetrobus.com](http://www.ridemetrobus.com)



#### Northstar Link Commuter Bus

The Northstar bus and train provide students with an affordable alternative to traffic congestion, parking issues, and the stress that comes with commuting between the Twin Cities and St. Cloud. The Northstar Link provides bus service between St. Cloud (with a stop on campus at the Miller Center), Becker, and the Northstar Commuter Rail Line station in Big Lake. From there, commuters can ride the rail from Big Lake to downtown Minneapolis. Northstar Link bus provides special mid-day service on Fridays from St. Cloud, Becker, Big Lake, Elk River, Ramsey, Anoka, Coon Rapids and Minneapolis. Route information and bus schedules are available in the Metro Bus transportation display in Atwood, Northstar Link website or at the Metro Bus Transit Center.

**Phone:** (877) 546-5010

**Email:** [info@catchthelink.com](mailto:info@catchthelink.com)

[www.catchthelink.com](http://www.catchthelink.com)

#### Parking Permits

Parking permits are required in all St. Cloud State University parking lots with the exception of the pay lots and the hourly ramp parking. As soon as you have registered for classes you may apply online for your 2016-2017 parking permit. Permit requests are processed entirely online. You will need your StarID and password to access your account. Logon to the website below to purchase your permit. (Click on Online Services which will take you to the permit icon). You will need to provide the make and model of your vehicle along with the license plate number. Payment may be made by using one of the following credit/debit cards—Visa, MasterCard, Discover, or American Express.

On campus students may apply to park in the A lots, E lots, Stateview, the 4th Avenue Parking Ramp and Q lot. Commuting students may apply to will park in M and K lots. Shuttle bus service is available from K lot to upper campus every ten minutes beginning at 6:30 a.m.

# STUDENT RESOURCES

Options for hourly parking include the 4<sup>th</sup> Avenue Parking Ramp (located just north of the Miller Learning Resources Center), the South Pay Lot (south of the Education Building) and the Miller Pay Lot (adjacent to the Miller Learning Resource Center). The pay machines and the parking ramp accept the following credit/debit cards—Visa, Master Card, Discover Card, American Express and cash. Also, the pay by phone feature is now available in the pay lots. The fee for both the ramp and the pay lots is \$1.50 per hour.

**Location:** Public Safety Building

(Adjacent to the 4<sup>th</sup> Avenue Parking Ramp)

**Phone:** (320) 308-3453

**E-mail:** [pubsafe@stcloudstate.edu](mailto:pubsafe@stcloudstate.edu), [parking@stcloudstate.edu](mailto:parking@stcloudstate.edu)

[www.stcloudstate.edu/parking](http://www.stcloudstate.edu/parking)

## Rideshare Board

The Rideshare board is intended to assist St. Cloud State students in ride-sharing/car-pooling. Access and usage are restricted to currently enrolled students through their StarID and password. The board lists students who need transportation or can provide transportation for a single trip or on a regular, commuting basis.

[www.stcloudstate.edu/parking/transportation.aspx](http://www.stcloudstate.edu/parking/transportation.aspx)

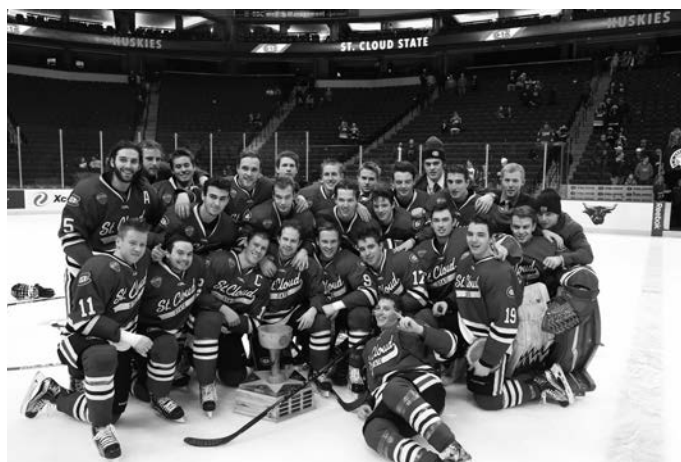
## Vehicle Jump Start Assistance

Public Safety provides 24-hour free vehicular jump start assistance on campus. Jump Starts may be requested by calling (320) 308-3333.

## STUDENT RESOURCES—STUDENT ACTIVITIES

### Athletics

St. Cloud State University supports 23 varsity athletic teams and 550 student athlete participants. The Huskies compete at the NCAA Division I level in men's and women's hockey, and at the NCAA Division II level in all other sports. St. Cloud State students can attend Husky home sporting events at Halenbeck Hall, Husky Stadium, Selke Field, Joe Faber Field, and the National Hockey and Event Center free of charge by showing their valid SCSU Campus Card ID.



### Athletics Student Rewards Program

SCSU Athletics rewards students for attending home sporting events. Student reward points are awarded during all home football, volleyball, wrestling, basketball, soccer, and hockey events. Students with the most points at the end of each month and semester win great prizes! Prizes include electronics, gift cards, Huskies apparel and more!

**Location:** Halenbeck Hall 329

**Phone:** (320) 308-3102

[www.scsuhuskies.com](http://www.scsuhuskies.com) • [www.scsutickets.com](http://www.scsutickets.com)

### Atwood Memorial Center

Atwood Memorial Center is the community center of the University, serving students, faculty, staff, alumni and guests.

Some of Atwood's amenities include:

- Theatre featuring pre-home release movies Thursday – Sunday nights
- The Underground bowling and recreation center
- Many dining locations
- Wide variety of events taking place daily
- Student employment opportunities
- Student organizations and involvement opportunities
- Caribou Coffee Shop
- Information Desk featuring the sale of popcorn, tickets, balloons, and The Link (SCSU's academic planner)
- Cultural Center
- Copies Plus copy shop
- Affinity Plus Credit Union and TCF Bank
- Art gallery
- Meeting rooms and event spaces
- Lounges and fireplaces for studying, gathering, and relaxing
- Kiosks and promotional spaces
- Administrative and student service departments including the Department of Campus Involvement, LGBT Resource Center, Multicultural Student Services, Campus Card Office, and Student Life and Development Office

**Location:** Atwood Memorial Center

**Phone:** (320) 308-4636

**E-mail:** [atwood@stcloudstate.edu](mailto:atwood@stcloudstate.edu)

[www.stcloudstate.edu/atwood](http://www.stcloudstate.edu/atwood)

### Campus Recreation

Campus Recreation provides an array of programs to stay active, get involved and meet new people. These programs include:

- **Intramural Sports:** Students compete against each other in a fun and organized sport setting. Includes a wide range of team and individual sports for all skill levels.
- **Fitness:** Enjoy the latest in fitness technology and equipment in our fitness center, or join one of our many group fitness classes led by certified instructors. Also stop in for a relaxing massage or hire a personal trainer to meet your fitness goals. (Register online or in-person)
- **Outdoor Endeavors:** Where is your next adventure? Rock climbing, kayaking, mountain biking, ropes course? We are your one stop for outdoor adventure.
- **Open Rec:** Use any recreation facility for free with your SCSU Student ID, including the fieldhouse, pool, climbing wall, and outdoor courts.

# STUDENT RESOURCES

- **Sport Clubs:** Play the sport you love, without the major commitment of intercollegiate athletics. Join one of the many specialized sport teams and compete against other universities around the Midwest.
- **Aquatics:** Enjoy open swim, or become certified in CPR or lifeguarding.

**Location:** Student Rec Center, Halenbeck Hall S102

**Phone:** (320) 308-3325

**E-mail:** campusrec@stcloudstate.edu

[www.stcloudstate.edu/campusrec](http://www.stcloudstate.edu/campusrec)

Connect with us on social media @SCSUCampusRec



## Department of Campus Involvement

Being involved on campus helps students connect with their university, community, and peers. The Department of Campus Involvement serves students by providing diverse and transformational involvement opportunities along with a dash of fun. Students at St. Cloud State can get involved in any of the following six areas:

- **Campus Programs:** Celebrate new connections by attending any of the annual programs including Huskies 1st 4 Weeks, Family Weekend, Lemonade Concert and Art Fair and, of course, the Celebrate! St. Cloud State weekends.
- **Civic Engagement:** Give back to the community by participating in volunteer service and/or in-class service learning opportunities.
- **Greek Life:** Make lifelong connections by going through recruitment for a fraternity or sorority.
- **Spirit Groups:** Show off your Husky spirit by trying out for the dance or cheer teams.
- **Student Organizations:** Explore and nurture personal interests by joining one of our 200+ student organizations.
- **University Program Board (UPB):** Expand leadership skills by participating in one of six committees, or expand your world by attending any of our diverse, entertaining, educational, social, musical, and cultural events. Don't miss the annual traditions of Blizzardshack in the fall and HuskyPalooza in the spring.

Go to our website and log in to Collegiate Link, your involvement connection. Use your star ID and password, create your profile, and you are ready to get involved! You can request an involvement guide consultation and start your involvement transcript your first semester.

**Location:** Atwood 134 (Front Desk)

**Phone:** (320) 308-2205

**E-mail:** campusinvolvement@stcloudstate.edu

[www.stcloudstate.edu/campusinvolvement](http://www.stcloudstate.edu/campusinvolvement)

## Student Government

Student Government helps promote student interests by providing funding for student organizations, allocating fees collected by the University, formally addressing issues or concerns related to the student body and representing students on a state-wide level through Students United.

**Location:** Atwood Memorial Center 139

**Phone:** (320) 308-3751

**E-mail:** sg-pres@stcloudstate.edu

[www.stcloudstate.edu/studentgovernment](http://www.stcloudstate.edu/studentgovernment)

## STUDENT RESOURCES—STUDENT SERVICES

### Adult Learner Student Programs

The Adult Learner Student website (address listed below) allows students to gain awareness of the information and programs that are available to this increasingly visible student population at St. Cloud State University. The goal is to meet the challenging needs of the Adult Learner genre that includes students who meet one of the following descriptors:

- Is 25 years or older
- has dependents or a spouse/partner
- Is a veteran

Adult Learners face unique challenges as they balance school, work, and family life. SCSU is committed to provide the information these students need to be successful.

**Location:** Miller Center Room 212A

**Phone:** (320) 308-3292

**E-mail:** adultlearners@stcloudstate.edu

[www.stcloudstate.edu/adultlearners](http://www.stcloudstate.edu/adultlearners)

### American Indian Center (AIC)

The American Indian Center provides a comprehensive array of services to support students' personal concerns and academic situations. The center staff offers tutoring, mentoring, social and cultural opportunities, and career development counseling on an ongoing basis. Outreach activities promote respect, awareness, understanding, and sensitivity to American Indian students, faculty, and staff and the rich cultural backgrounds from which they come.

**Location:** American Indian Center, 901 4<sup>th</sup> Ave. South

**Phone:** (320) 308-5449

**E-mail:** aic@stcloudstate.edu

[www.stcloudstate.edu/aic](http://www.stcloudstate.edu/aic)

### Campus Card

Your SCSU Campus Card serves as an official ID, and can hold up to four important accounts:

1. Campus Cash is a prepaid, stored-value account that is the convenient, cashless way to make purchases on campus. You can use Campus Cash for many things including buying food, paying tuition, purchasing concert and theatre tickets and much more.
2. TCF Campus Card Student Checking Account is a great way to manage your personal finances. When you open a TCF Campus Card Student Checking account, you receive free checking with no minimum balance, no monthly fees and your Campus Card becomes an ATM card.
3. Each semester students will receive \$8 in a student print account. This account may be used at any St. Cloud State computer lab to print documents. Once funds are depleted, it will automatically draw from your Campus Cash account.



# STUDENT RESOURCES

- Dining plans are available for residential students through the Department of Residential Life as a part of your housing assignment. Off campus students may also purchase dining plans/ Munch Money through Dining Services.  
See [www.scsudining.com](http://www.scsudining.com) for more information

Your Campus Card can also be used for admission to sporting events, free Metro bus rides, access to the fitness center and more!

**Location:** Atwood Memorial Center, 1st Floor

**Phone:** (320) 308-1683

**E-mail:** [campuscard@stcloudstate.edu](mailto:campuscard@stcloudstate.edu)

[www.stcloudstate.edu/campuscard](http://www.stcloudstate.edu/campuscard)

## Career Services Center

The Career Services Center can assist with:

- Resume reviews
- Major and career decision counseling
- Mock interviews
- Job and internship fairs

For additional information, see pages 16-17.

**Location:** Centennial Hall 215

**Phone:** (320) 308-2151

**E-mail:** [careerservices@stcloudstate.edu](mailto:careerservices@stcloudstate.edu)

[www.stcloudstate.edu/careerservices](http://www.stcloudstate.edu/careerservices)

## Conflict Resolution Center

The Conflict Resolution Center provides mediation services, conflict coaching, and other related resources to St. Cloud State students. Students can request mediation and/or conflict coaching when they have a conflict with a roommate, a group member, a co-worker, a landlord, or a fellow student in an organization. The mediation process is confidential and can be conducted by trained student mediators.

**Location:** Brown Hall 115

**Phone:** (320) 308-6150

**E-mail:** [crc@stcloudstate.edu](mailto:crc@stcloudstate.edu)

[www.crcminnesota.org](http://www.crcminnesota.org)

## Husky Bookstore

### Purchasing or Renting Textbooks

The official St. Cloud State University Husky Bookstore is located in Centennial Hall. Representatives from the bookstore are available to answer questions about purchasing or renting textbooks. Hours of operation for the bookstore vary throughout the year. A portion of sales made at the Husky Bookstore, including rental, goes towards scholarships for St. Cloud State students.

As a convenience for students, up to \$1,000 per semester in course materials purchased at the Husky Bookstore may be charged to individual student accounts. In order to utilize this benefit, students must have no holds on their student accounts at the time of the purchase. This payment option is only available approximately 3 weeks prior to the start of the semester. For more information about this service please contact Business Services at (320) 308-4012.

### Husky Books Express

This service is a convenient, streamlined online book-buying service. By signing in with your StarID and password, you may select and order books to be sent to you or to be picked up at the Husky Bookstore. Follow these steps to buy books through Husky Books Express:

- Go to [www.stcloudstate.edu](http://www.stcloudstate.edu)

- Click on **Current Students**
- Click on **e-Services Sign-In**
- Login using your StarID and password
- Click on **Husky Books Express** on the left
- Login again with your StarID and password
- You will either be given a list of courses for which you are registered, or have the opportunity to select the semester for which you would like to purchase books. A list of courses for which you are registered will be shown.
- Click **View Books**. You will then be allowed to select your preference for new or used books, rental books or e-books. You will also be able to view the book prices and decide which course books you want to purchase at that time.

**Location:** Centennial Hall (1st Floor)

**Phone:** (320) 308-1489

**E-mail:** [bookstore@stcloudstate.edu](mailto:bookstore@stcloudstate.edu)

[www.thehuskystore.com](http://www.thehuskystore.com)

## Lesbian, Gay, Bisexual, Transgender (LGBT) Resource Center

The LGBT Resource Center is dedicated to providing an inclusive and educational environment for all St. Cloud State students, staff, faculty, alumni, allies, and the community at large. The staff is committed to providing services and programs that foster student development and personal growth and cultivate an inclusive, open, and supportive community through education, collaboration, advocacy, services and programs. The LGBT Resource Center strives to promote full inclusion of LGBT persons and their allies at St. Cloud State and to eliminate homophobia and heterosexism.

**Location:** Atwood Memorial Center 142

**Phone:** (320) 308-5166

**E-mail:** [lgbt@stcloudstate.edu](mailto:lgbt@stcloudstate.edu)

[www.stcloudstate.edu/lgbt](http://www.stcloudstate.edu/lgbt)

## Lindgren Child Care Center

The Center provides infant, toddler, and preschool-aged care to the children of students, staff, and faculty. The Center staff is committed to ensuring each child's health and safety while helping children establish trust in their environment, strengthen their self-identity, and ignite their curiosity through productive, satisfying activity.

**Location:** Engineering and Computing Center 122

**Phone:** (320) 308-3296

**E-mail:** [childcare@stcloudstate.edu](mailto:childcare@stcloudstate.edu)

[www.stcloudstate.edu/childcare](http://www.stcloudstate.edu/childcare)





# STUDENT RESOURCES



## Multicultural Student Services (MSS)

The Office of Multicultural Student Services provides for the particular needs of students of color. The department provides comprehensive services by giving academic assistance, education abroad opportunities, engagement with cultural student organizations, and offering multicultural programming.

**Location:** Atwood Memorial Center 141

**Phone:** (320) 308-3003

**E-mail:** [mss@stcloudstate.edu](mailto:mss@stcloudstate.edu)

[www.stcloudstate.edu/mss](http://www.stcloudstate.edu/mss)

## Student Legal Services

Currently enrolled students are offered a free legal consultation on a wide variety of issues. Stop by the Department of Campus Involvement Front Desk to make an appointment.

**Location:** Atwood Memorial Center 134 (Front Desk)

**Phone:** (320) 308-2205

[www.stcloudstate.edu/campusinvolvement/about/legalservices.aspx](http://www.stcloudstate.edu/campusinvolvement/about/legalservices.aspx)

## Student Life and Development (Office of)

The Office of Student Life and Development houses the Vice President for the Division of Student Life and Development, the Associate Dean of Students, and the Assistant Dean of Students, along with additional professional and support staff who lead Division and University initiatives to enhance and support student success. The office houses the Student Conduct Program, the Respect and Responsibility Program, the Recovery Community, and the U-Choose Alcohol and other Drug Educational Program. Other functions include student crisis management, support to students and policy development. This office is responsible for publication of the Student Handbook which includes the Student Code of Conduct. The Behavioral Intervention Team, which addresses special concerns and needs of students, is managed by this office.

**Location:** Atwood Memorial Center 219

**Phone:** (320) 308-3111

**E-mail:** [studentlife@stcloudstate.edu](mailto:studentlife@stcloudstate.edu)

[www.stcloudstate.edu/sld](http://www.stcloudstate.edu/sld)

## Student Parent Support Center

The Student Parent Support Center is a grant funded program that strives to ensure that pregnant and parenting women and men are able to successfully accomplish their higher educational/post-secondary educational goals while maintaining a positive, healthy life for themselves and their children.

The Student Parent Support Center provides information on resources, programs, services, and also provides support to all student parents to make sure they have what they need to be successful. Through support groups, parent education workshops, and family fun nights, the Student Parent Support Center connects student parents to each other, as well as to campus and community resources.

**Location:** Engineering & Computing Center 114a–Coordinator’s Office, Engineering & Computing Center 112a–Student Parent Social Space

**Phone:** (320) 308-3246

**E-mail:** [spsc@stcloudstate.edu](mailto:spsc@stcloudstate.edu)

[www.stcloudstate.edu/sps](http://www.stcloudstate.edu/sps)

## Veterans Resource Center

The Veterans Resource Center supports veterans, military members, their families and the community. The Center assists with questions and concerns, advocates for veteran friendly policies and procedures, coordinates services, and provides information on collaborating agencies.

**Location:** Administrative Services 100

**Phone:** (320) 308-2185

**E-mail:** [veteransresource@stcloudstate.edu](mailto:veteransresource@stcloudstate.edu)

[www.stcloudstate.edu/veterans](http://www.stcloudstate.edu/veterans)

## Women’s Center– Gender Violence Prevention Program

The Women’s Center offers a comprehensive array of services and programming to address a diverse student body, unique needs of women, and issues related to and intersecting with gender on campus. Advocating for women, educating the campus community and advancing gender equity and safety are core to our work, accomplished through, educational programming (including Women on Wednesday), advocacy and support services, the Gender Violence Prevention Program, scholarships for non-traditional women, classroom presentations, a lactation room, free supplies for the campus community (including condoms, dams, pregnancy test, and menstrual hygiene products) and meeting space for student groups.

Issues addressed in our work include sex/gender discrimination, healthy relationships and sexuality, sexual assault, rape, sexual harassment, dating violence, body image, crisis pregnancy, pay equity, work/life balance, reproductive justice, women’s leadership and women’s empowerment. The Women’s Center collaborates with other departments, student organizations, individuals on campus and community partners to address problems and develop solutions.

**Location:** Women’s Center

Located on the corner of 5th Ave. and 6th Street

**Phone:** (320) 308-4958

**E-mail:** [womenscenter@stcloudstate.edu](mailto:womenscenter@stcloudstate.edu)

[www.stcloudstate.edu/womenscenter](http://www.stcloudstate.edu/womenscenter)

[collectivefeminism.wordpress.com](http://collectivefeminism.wordpress.com)

[facebook.com/stcloudstatewomenscenter](https://facebook.com/stcloudstatewomenscenter)

[twitter.com/scsuwomenscenter](https://twitter.com/scsuwomenscenter)

# STUDENT RESOURCES

## STUDENT RESOURCES—TECHNOLOGY

### TECHNOLOGY SERVICES

[www.stcloudstate.edu/its](http://www.stcloudstate.edu/its)

St. Cloud State University provides a variety of technology services to support the campus life of a student. HuskyTech, is the branded name for technology at SCSU. If you need and assistance, service or support, please visit our location in the Miller Center (Library) MC 102 or call at 320-308-7000.

**STARID:** Through the use of your StarID, this individual ID and password will provide access to an email account, wi-fi, network file space and web space, academic course work and the ability to access technology-related resources.

**EMAIL:** To access your technology services, go to [www.stcloudstate.edu](http://www.stcloudstate.edu) and click on the myHuskyNet link to get to access the myHuskyNet portal. Login with your StarID and password. To locate your St. Cloud State email address, click on the MY ACCOUNT tab on the top of the navigation bar. Your St. Cloud State email address will be displayed under the email line.

### HuskyTech (Computer Store & HelpDesk)

HuskyTech is the technology support center for students. HuskyTech is designed to answer questions on many topics including email, ResNet (Residential Network), campus technology, and personal computer hardware and software. We can help with all your personal computer and technology needs. HuskyTech includes a computer store (Miller Center location) where employees are available to help you choose the computer system, software, and the accessories that are right for you. Educational discounts are available to St. Cloud State students on most software and computers.

### Protection

HuskyTech can provide assistance on computer and device protection. We offer solutions for iOS, Android, Windows and Macintosh operating systems for your personal device. For information on your device, visit the website below:

[huskynet.stcloudstate.edu/protectu](http://huskynet.stcloudstate.edu/protectu)

**Location:** Miller Center 102

**Phone:** (320) 308-7000

**E-mail:** [huskytech@stcloudstate.edu](mailto:huskytech@stcloudstate.edu)

[www.stcloudstate.edu/huskytech](http://www.stcloudstate.edu/huskytech)

### St. Cloud State Email Account

Through the use of your StarID, you will have access to an email account. If you haven't yet located your St. Cloud State email address, you can find the instructions to do so on page 35 of this Guide. Your St. Cloud State email account can be used for all of your school-related communication from both on and off campus.

**IMPORTANT:** St. Cloud State email is an official form of communication at SCSU. All students are required to check their St. Cloud State email account regularly to be sure not to miss important announcements.

### Examples of official email messages:

- Public Safety and campus security alerts
- Student government election information
- Health Services notices
- Course registration information
- Financial aid information
- Messages from St. Cloud State's president
- Technology notices

**Phone:** (320) 308-7000

**E-mail:** [huskynet@stcloudstate.edu](mailto:huskynet@stcloudstate.edu)

[www.stcloudstate.edu/its](http://www.stcloudstate.edu/its)

**The Student Technology Fee**, a component of your tuition and fees, provides funding for many of the computing and technology services on campus.

### myHuskyNet

The myHuskyNet student portal is a gateway to customized information regarding your campus services and campus life. You can log in once to receive access to email, D2L Brightspace, file space and e-Services. In addition, you can view your course schedule, grades, computer lab seats, and much more.

[myhuskynet.stcloudstate.edu](http://myhuskynet.stcloudstate.edu)

### Computers & Printing

SCSU provides General Access labs, which hold more than 400 computers on campus, are open to all St. Cloud State students. These labs are available during daytime hours when classes are in session. Most computer labs are equipped with black-and-white laser printers. Color printers are available in the Miller Center and Kiehle Visual Arts Center. Each semester, the Student Technology Fee account deposits \$8 onto your SCSU Campus Card for printing to be used that semester.

### Printing Costs:

- Single-sided prints: 4¢
- Double-sided prints (*default setting*): 7¢
- Color prints: 25¢

### Technology in the Classroom

#### • D2L Brightspace

Instructors at St. Cloud State can use a specialized, web-based learning management system, called D2L Brightspace. This product provides a variety of online options including accessing course content, uploading assignments, taking quizzes, participating in discussions and listening to course lectures, all through a standard web browser. As a student, you may be required to log in to D2L Brightspace for a portion or all of your course work.

[huskynet.stcloudstate.edu/D2L](http://huskynet.stcloudstate.edu/D2L)

#### • Electronic Classrooms

St. Cloud State has more than 200 electronic classrooms that allow professors to enhance instruction with technology. E-classrooms are equipped with a computer, touch screen audio-visual management system and multimedia equipment.

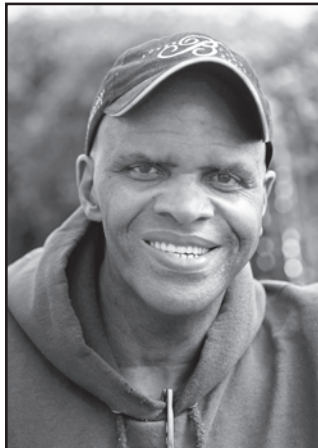
# COMMON READING PROGRAM

## ABOUT THE PROGRAM

As a new first-year student, you have received a copy of *The Good Food Revolution* by Will Allen. Students are expected to read the book over the summer, prior to returning to campus in fall. During Huskies First Four there will be activities, including a “Let Us Catch You Reading” contest, complete with prizes! Let us catch you reading in the summer, by posting a picture of you reading the book on Facebook or Twitter using #HuskiesRead and be entered in our drawing. The book will also be used in a variety of first-year courses, and there are events related to the book, and the issues it raises, throughout the 2016-17 academic year.



COMMON READING PROGRAM  
ST. CLOUD STATE UNIVERSITY

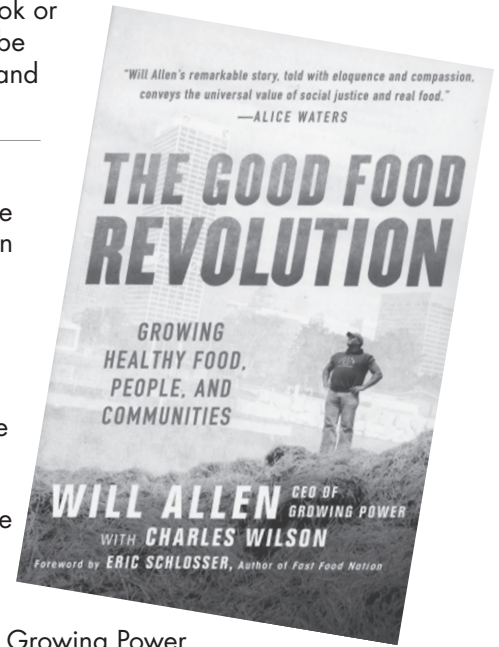


**Will Allen** is the son of South Carolina sharecroppers who moved to Maryland during the Great Migration to start a new life. From state basketball championships to becoming the first African-American basketball player for the University of Miami, Allen followed a path that led to turning pro after graduating with a degree in education. His pro

basketball career took him to Belgium where he found himself getting back to his roots, growing food for his family and teammates in the fashion of local families on small plots, and igniting his own passion for sustainable farming. After retiring from basketball and a successful career in marketing, Allen settled into managing his wife’s family farm just outside of Milwaukee, Wisconsin. In looking for a place to sell his produce, he cashed in his retirement fund to purchase a derelict nursery in foreclosure, the last urban plot zoned agriculturally in the city on Milwaukee’s northside, and there he founded the organization, Growing Power. He has been awarded a Ford Foundation leadership grant, a MacArthur Foundation Genius Grant, and been named Food Revolutionary on the first ever Rodale 100, among other accolades.

*The Good Food Revolution* traces the journey of Will Allen from professional basketball player and executive with Kentucky Fried Chicken and Procter and Gamble to a preeminent urban farmer in inner-city Milwaukee and founder of an internationally recognized

organization called Growing Power. Having cashed in his retirement fund to purchase a two-acre plot outside of the city’s largest public housing project, Allen sets out on a mission to transform an urban food desert into a vibrant community organization that provides high-quality, healthy and affordable food to the community as well as jobs and educational opportunities for vulnerable youths. The book follows the evolution of what began as a small, one-man enterprise and quickly grew into a robust organization through a series of small, but meaningful decisions he made, each out of a desire to make a difference in the community. Today, Growing Power is a robust, internationally-recognized leader in sustainable urban farming and the food security movement and works with organizations throughout the country to develop community food systems.



For more information on Will Allen’s organization, Growing Power, visit: [www.growingpower.org](http://www.growingpower.org)

**WRITE AN ESSAY ABOUT THE BOOK AND WIN A SCHOLARSHIP FOR SPRING 2017!  
COMPETITION OPENS SEPTEMBER 6 AND CLOSSES NOVEMBER 7**

Find resources for reading, exploring questions about the book, and information about both “Let Us Catch You Reading” and the scholarship essay competition at:

[www.stcloudstate.edu/commonread](http://www.stcloudstate.edu/commonread)



[facebook.com/SCSU Common Read](https://www.facebook.com/SCSUCommonRead)



[twitter.com/SCSUcommonread](https://twitter.com/SCSUcommonread)

# HUSKIES FIRST FOUR/ORIENTATION

## FALL 2016

## NEW STUDENT ORIENTATION

Huskies 1<sup>st</sup> Four Days is all about making you feel at home. It is an exciting time full of opportunities to meet other new students, talk with faculty and staff, learn about the university, get ready for classes, and learn what it means to be a Husky! Visit our website for more information throughout the summer:

[www.stcloudstate.edu/firstfour](http://www.stcloudstate.edu/firstfour)

### THURSDAY, AUGUST 18

Join us for workshops for new students and their families, followed by our annual Opening Ceremony and late night social. Meet your orientation leader, your guide throughout the Huskies 1<sup>st</sup> Four Days.

### FRIDAY, AUGUST 19

New first year & transfer students will connect with our faculty, colleges and schools through our Academic Orientation program, followed by workshops and a late night social.

### SATURDAY, AUGUST 20 & SUNDAY, AUGUST 21

Activities on Saturday and Sunday are designed to help you connect with the SCSU community, the greater St. Cloud community and your fellow Huskies. Networking, campus tours, socials and informational activities are scheduled to help you prepare for your first semester at SCSU.

Adult Learners, Commuters, Transfer Students, Veterans and Student-Parents will find condensed programs throughout the Huskies 1<sup>st</sup> Four Days to meet their specific needs and interests.

All new international students are encouraged to participate in all activities. Some activities are required for international students and are designated as such in the master schedule.

## Top 10 reasons

## You should attend Huskies 1<sup>st</sup> Four activities:

1. Get an opportunity to meet other new Huskies
2. Join in the rich history of our campus & learn our traditions
3. Meet professors and advisors before classes begin
4. Learn about academic expectations for SCSU students
5. Discover success strategies that work at SCSU
6. Get your first FREE SCSU t-shirt (likely one of many to come)
7. Find out how to get involved in activities you're interested in
8. Give back to the SCSU and St. Cloud communities through service projects
9. Meet students with similar interests as you, as well as students from all over the world!
10. Have fun!

We know students who participate in orientation activities at SCSU perform better (on average) than students who don't. Get a jump start on your first semester and join us to start creating your future at SCSU!



# HUSKIES FIRST FOUR/ORIENTATION

**REGISTER**

Sign up for your activities at  
[www.stcloudstate.edu/firstfour](http://www.stcloudstate.edu/firstfour)

# HUSKIES 1<sup>ST</sup> 4



Students needing an accommodation to participate in Huskies 1<sup>st</sup> Four activities should contact orientation staff one week in advance.



(320) 308-6075



[fytp@stcloudstate.edu](mailto:fytp@stcloudstate.edu)



[facebook.com/SCSUFYE](https://facebook.com/SCSUFYE)



[twitter.com/SCSUFIRSTYEAR](https://twitter.com/SCSUFIRSTYEAR)

# PARTNERS IN EDUCATION



## PROVIDING SUPPORT FOR YOUR COLLEGE STUDENT

You, as family and friends of a student, are an important part of the St. Cloud State University community. We are committed to informing you about the college transition, and the issues you and your student may be facing as you prepare for this new challenge in your lives. Our aim is to help you to anticipate and be prepared for the common, and not so common, experiences of first year college students. We strive to provide you with timely information about St. Cloud State University programs, services and opportunities which support your student's success. College students need their supporters to care, listen and love them more than ever. In fact, research has shown that college students who have encouragement from their support system are much more likely to persist and graduate.

The following six conversations outline important ways that you can continue to mentor and guide your student. We encourage you to have these conversations with your student before he or she comes to campus.

### 1. **Academics**

- Does your student have a major? Or a plan towards choosing one? (see pages 16-17)
- Learn together about campus offices and services to support student learning. (see pages 18-28)

### 2. **Finances**

- How will your student's education be financed? (see page 5)
- Pizza, social events and the necessities of life add up. Discuss money management, part time employment and your financial expectations. (see page 7)

### 3. **Health**

- You are often the first person to know when your student is not feeling well. During your conversations listen for signs that your student is run down or feeling overwhelmed.
- What is your student's healthy balance between academics and a social life?
- St. Cloud State has many resources for maintaining student health. (see pages 21-23)
- The Parent's Guide to Alcohol brochure provides talking points

to discuss alcohol and other drug issues with your student. Be sure your student knows your expectations about these important topics. (see page 22-23)

- There may come a time when you are truly concerned about your student. The Office of Student Life and Development and/or the staff in Residence Life can partner with you to address these concerns. (see page 27)
  - SCSU is a tobacco-free campus. If your student uses tobacco products of any kind, be aware of this policy. (see page 22)
4. **Communication**
    - Will you have access to your student's grades and financial information?
    - See the box on page 33 for information on FERPA and the implications it has for how and when University officials may share information with you.
  5. **Safety**
    - The Public Safety Department provides many services to students including walking escorts, jump starts and filing of reports. (see page 21)
    - Blue light phones, located across campus, provide a direct link to Public Safety. (see page 21)
    - Talk to your student about personal and property safety.
    - Being safe includes identity theft, internet and social networking safety. Discuss with your student ways to protect their privacy.



# PARTNERS IN EDUCATION

## (PROVIDING SUPPORT, CONTINUED)

### 6. *The College Experience*

- Sure, college is about classes, majors and a degree, but there's so much more to a full experience.
- Research shows that living on campus is a factor in campus engagement. Consider how your student could benefit from the many activities, closeness to campus and relationships that residence living provides. (see page 34)
- There are over 200 student organizations at St. Cloud State University. Joining an organization can provide leadership opportunities, networking, a chance to meet others who share a similar interest and is a great way to get connected. Look over the list of organizations with your student and discuss a few that may be of interest. (see pages 24-25)
- Many students enjoy friendship, exercise and a chance to continue being involved in a sport through sports clubs, intramurals and use of the campus recreation facilities.
- Mainstreet (fall) and Sidestreet (spring), are campus-wide events held early each semester. They provide a chance for student organizations to showcase themselves and recruit new members. Encourage your student to attend. (see page 4)

Most of all, treasure the time you have with your college student. Trust that the life lessons you have taught and the example you have provided will continue to influence and guide your student during their college years. We are excited to welcome your student to St. Cloud State University and to partner with you in their growth and success during the next few years.

## PARENT & FAMILY EVENTS

**Advising & Registration Days:** May-August (Fall admits)

November-January (Spring admits)

**Huskies 1st Four** August 18-21, 2016

**Family/Celebrate! St. Cloud State Weekend:** September 15-17, 2016

### FAMILY EDUCATION RIGHTS AND PRIVACY ACT

The Family Education Rights and Privacy Act of 1974, commonly referred to as FERPA, is a federal law that protects the privacy of student educational records. This federal law prohibits the university to share student records, including grades, with anyone but the student. Your student can choose to share information, such as grades, with you. It is important to discuss with your student expectations about sharing this information.

### KEEPING IN TOUCH THROUGH THE PARTNERS IN EDUCATION LISTSERV

During Advising and Registration Days, parents and family members will have the opportunity to provide their email address for a Partners in Education Listserv. Through the Listserv you will receive helpful tips, timely reminders and important information on preparing your student for campus life at SCSU. Once your student is on campus, you will get a few more emails with information about events on campus, hints for supporting your student through the first semester and details on Family Weekend. To make sure you are in the know, ask any staff person at your Advising and Registration Day for a Partners in Education Listserv sign-up card or visit the following website to subscribe: <http://lists.stcloudstate.edu/mailman/listinfo/newscsuparent>

## PARTNERS IN EDUCATION RESOURCES

### **SCSU Parents & Families website:**

[www.stcloudstate.edu/parents](http://www.stcloudstate.edu/parents)

This website includes valuable information for parents and families regarding campus and community resources.

### **SCSU Parents & Families Residential Life Students website:**

[www.stcloudstate.edu/reslife/ParentandFamilyResources.asp](http://www.stcloudstate.edu/reslife/ParentandFamilyResources.asp)

This website includes information on how to order care packages for your on-campus student, newsletters and other information for parents, family, and friends.

### **Recommended Reading and Web Resources:**

- Coburn, K.L. & Treeger, M.L. (2016). *Letting go: a parents' guide to understanding the college years*. 6th ed.. New York: HarperCollins
- Cohen, H. (2010). *The happiest kid on campus: a parent's guide to the very best college experience (for you and your child)*. Casselberry: Sourcebook.
- Hofer, B.K. & Moore, A.S. (2010). *The iconnected parent: staying close to your kids in college (and beyond) while letting them grow up*. New York: Free Press.
- Johnson, H. and Schelhas,-Miller, C. (2011). *Don't tell me what to do, just send money*. New York: St. Martins Press.
- Savage, M. (2009). *You're on your own (but I'm here if you need me): Mentoring your child during the college years*. (2nd Ed.) New York: Fireside.
- [www.transitionyear.org](http://www.transitionyear.org) is an online resource center to help parents, family members and students focus on emotional health before, during, and after the college transition.



# LIVING ON CAMPUS

## Residential Life

Ervin House  
 (320) 308-2166  
[www.stcloudstate.edu/reslife](http://www.stcloudstate.edu/reslife)  
[reslife@stcloudstate.edu](mailto:reslife@stcloudstate.edu)



### TOP 10 REASONS TO LIVE ON CAMPUS

1. Get better grades.
2. Live the total college experience—a once in a lifetime opportunity.
3. Safety and security—this is one of our top priorities.
4. High-tech learning and easy access to campus resources.
5. A trained, caring, and supportive on-campus staff.
6. Live close—sleep in; you're 10 minutes or less from everything.
7. Get involved and make connections; we have something for everyone.
8. Meet people from around the world.
9. Hassle-free billing—one price covers everything.
10. No need to cook.

## LIVING ON CAMPUS

More than 80% of your time will be spent outside of the classroom, so your living environment is very important! Your entire university experience, from your academics to your social life, will be affected by where you choose to live. Living on campus in one of the eight residential communities offers convenience, accessibility, and countless opportunities to play an active role in campus life. The Department of Residential Life provides a variety of living options, each with an environment that is welcoming, safe, and supportive of your academic and personal success.

### BASIC ROOM FURNISHINGS

Most rooms are designed and furnished for two residents; however, there are a few larger rooms that three residents may occupy. When you arrive at St. Cloud State University, your room will be furnished with the following:

- 2 desks
- 2 desk chairs
- 2 bed frames with 2 mattresses
- 2 closets
- Mirror
- Dresser/drawer space
- Curtains, shades or blinds
- Garbage/recycling can

**NOTE:** All residence halls have extra-long mattresses. Please plan accordingly when purchasing bedding.

Students typically bring TV's, radios, computers, microwaves, posters, and other comforts. We recommend that you contact your future roommate and decide amongst yourselves how you handle common supplies that will be used.

### AMENITIES:

- Laundry is included at no additional cost
- High speed Wi-Fi
- HDTV with over 90 channels
- Lounge and kitchen space
- Quiet spaces to study

### DINING PLANS

We have several dining plan options with variable amounts of Munch Money. Munch Money is declining balance dollars deposited on your SCSU Campus Card. This money can be used to purchase a meal or snack in any campus dining location. The Munch Money transfers from fall semester to spring semester but must be used by the end of the academic year. Questions can be directed to the Department of Residential Life at the number or email listed above.

### SAFETY

The Department of Residential Life places an emphasis on student safety. It is one of the highest rated satisfaction points with our students. Card access technology, video surveillance, and night security staff in all of our residence halls are a few examples of these additional safety measures.

### COBORN PLAZA APARTMENTS

It's not too late to sign-up to live at Coborn Plaza Apartments.

- Private bedrooms and private bathrooms
- Internet and cable included
- Close to fitness, entertainment and dining
- Conveniently adjacent to campus
- Full size beds, desks, dressers, living room furniture and kitchen appliances provided
- In-unit laundry in every single apartment
- Heated underground parking
- Secured entrance and video surveillance
- On-site Residential Life staff

Call Residential Life at (320) 308-2166 or email us at [reslife@stcloudstate.edu](mailto:reslife@stcloudstate.edu) for additional information.

**NOTE:** Coborn Plaza Apartments all have full size mattresses. Please plan accordingly when purchasing bedding.



# REGISTERING FOR CLASSES



## INSTRUCTIONS TO ACCESS E-SERVICES, ST. CLOUD STATE'S COURSE REGISTRATION SYSTEM

1. Go to the St. Cloud State homepage: [www.stcloudstate.edu](http://www.stcloudstate.edu)
2. Click on the "myHuskyNet" link at the top of the page
3. Enter your StarID and password
4. Click "e-Services" on left menu

## INSTRUCTIONS TO REGISTER FOR A COURSE

<http://www.stcloudstate.edu/srfs/registration/guide.aspx>

1. Click "Courses & Registration" on the left panel
2. Click "Search for a Course"
3. Change "Semester" to appropriate term of registration
4. Change "Subject" to the subject of the course being searched
5. Enter the 3-digit Course Number
6. Click the "Search" button
7. Click the Add (+) symbol for the desired course
8. The course will then be added to your Wish List
9. Click "Review My Plan"
10. Click the box next to the course ID#
11. Click "Select Course(s) to proceed to Register"
12. Enter your StarID in the box
13. Click "Register"  
*(a confirmation screen will appear, indicating you are registered for the course)*
14. Repeat steps 1-13 to register for more courses

**NOTE:** Under "Search for a Course" you can click "Expand/Collapse for Advanced Search" to narrow your course search by specific goal areas, times, days, etc.

## INSTRUCTIONS TO LOCATE YOUR ST. CLOUD STATE EMAIL ACCOUNT, ST. CLOUD STATE'S OFFICIAL FORM OF COMMUNICATION

1. Go to the St. Cloud State homepage: [www.stcloudstate.edu](http://www.stcloudstate.edu)
2. Click on the "myHuskyNet" link at the top of the page
3. Login with your StarID and password
4. Click "MY ACCOUNT" on the top navigation bar
5. Your St. Cloud State email address will be displayed under the Email line

# REGISTERING FOR CLASSES

## MY SEMESTER SCHEDULE

MONDAY	TUESDAY	WEDNESDAY	THURSDAY	FRIDAY
(8:00-8:50)	(8:00-9:15)	(8:00-8:50)	(8:00-9:15)	(8:00-8:50)
(9:00-9:50)	(9:30-10:45)	(9:00-9:50)	(9:30-10:45)	(9:00-9:50)
(10:00-10:50)		(10:00-10:50)		(10:00-10:50)
(11:00-11:50)	(11:00-12:15)	(11:00-11:50)	(11:00-12:15)	(11:00-11:50)
(12:00-12:50)	(12:30-1:45)	(12:00-12:50)	(12:30-1:45)	(12:00-12:50)
(1:00-1:50)		(1:00-1:50)		(1:00-1:50)
(2:00-2:50)	(2:00-3:15)	(2:00-2:50)	(2:00-3:15)	(2:00-2:50)
(3:00-3:50)	(3:30-4:45)	(3:00-3:50)	(3:30-4:45)	(3:00-3:50)
(4:00-4:50)		(4:00-4:50)		(4:00-4:50)
(5:00-7:45)	(5:00-7:45)	(5:00-7:45)	(5:00-7:45)	(5:00-7:45)
(6:00-8:45)	(6:00-8:45)	(6:00-8:45)	(6:00-8:45)	(6:00-8:45)
<b>St. Cloud State email</b>	@stcloudstate.edu			

My courses help meet which requirements? <i>NOTE: Some courses may fulfill more than one requirement</i>		
Liberal Education Courses	Major Courses	Elective Courses

# REGISTERING FOR CLASSES

## REGISTRATION LAB CHECKLIST

### CREDITS \_\_\_\_\_

- Interactive Degree Audit Report (DARS)
- Goal 1 course if needed: ENGL 191 (or equivalent) OR CMST 192
- Identify class categories (Major/Liberal Education/Elective)
- Time Management
- Student approved schedule \_\_\_\_\_ initials
- Financial Aid Questions
- Billing & Payment
- Husky Books Express
- Locate SCSU Email: \_\_\_\_\_@stcloudstate.edu  
(See page 35 for instructions)
- Create Financial Literacy Account
- Sign up for Huskies 1st Four Group
- Survey

### NOTES:

# LIBERAL EDUCATION PROGRAM

The SCSU Liberal Education Program is the official general education program at St. Cloud State University. Completion of the SCSU Liberal Education Program is a component of a baccalaureate degree and a requirement for graduation.

**The courses listed here may change.** The list will be updated periodically. Check the University Catalog ([catalog.stcloudstate.edu](http://catalog.stcloudstate.edu)) under Academic Programs then Liberal Education Program for the current list.

- Students must complete all ten goals and earn at least 40 credits.
- Number superscripts above the course indicate another goal to which the course may be applied.
- Students must complete 3 diversity courses which are **bold** and underlined. The Diversity courses must come from 3 different rubrics or academic areas. We strongly recommend and encourage that 1 Diversity course be an approved Racial Issues course. See Goal 7 for approved Racial Issues (RIS) courses
- The University Honors Program provides an alternative to the SCSU Liberal Education Program.
- Students may refer to their degree audit report in e-Services for completed and/or partially completed goal areas.
- All courses listed here are 3 credits unless otherwise stated.

## REQUIREMENTS:

### Goal 1: Communication (2 courses)

#### Select one of the following:

ART 198, Research and Analytical Writing in Art (4 cr.)  
 ENGL 190, Introduction to Rhetorical and Analytical Writing: Supplemental (4 cr.)  
 ENGL 191, Introduction to Rhetorical and Analytical Writing (4 cr.)  
 ENGL 198, Analytical and Research Writing in the Humanities (4 cr.)  
 ENGL 291, Introduction to Analytical and Rhetorical Writing (ENGL 291 should be taken only in consultation with an advisor) (2 cr.)  
 TH 198, Rhetorical and Analytical Writing for Theatre (4 cr.)

#### Students are also required to complete:

CMST 192, Introduction to Communication Studies

### Goal 2: Critical Thinking (1 course)

ASTR 107 <sup>3</sup> , Concepts of Stars and the Universe (F16 or after)	LIB 280, Critical Thinking in Academic Research
CMST 306 <sup>6</sup> , Rhetoric in Popular Culture	PHIL 194, Critical Reasoning
CMST 318, Argumentation and Advocacy	POL 191, Introduction to Political and Legal Reasoning
ENGL 306 <sup>6</sup> , Rhetoric in Popular Culture	POL 192, Critical Reasoning: Issues and Events in American Politics

### Goal 3: Natural Sciences (2 courses, no more than 4 credits from one rubric or academic area. Include at least one laboratory course, indicated with\*)

AHS 104*, Introduction to Atmospheric Science	BIOL 111*, Applied Human Biology
AHS 105*, The Water Environment	BIOL 152* <sup>10</sup> , Organismal Diversity (4 cr.)
AHS 106 <sup>10</sup> , Natural Hazards and Human Society	CHEM 101, Understanding Chemistry
AHS 109*, Introduction to Environmental Geology	CHEM 105 <sup>10</sup> , Chemistry and the Environment
AHS 220*, Physical Geology Systems (4 cr.)	CHEM 131*, Introductory Chemistry for Health Sciences (4 cr.)
AHS 230*, Introduction to Physical Hydrology (4 cr.)	CHEM 141*, Introduction to Organic and Biological Chemistry (5 cr.)
AHS 260*, Introductory Meteorology (4 cr.)	CHEM 160*, Preparatory Chemistry (4 cr.)
<b>ANTH 140</b> , Human Origins	CHEM 207*, Forensic Science
ASTR 105, Astrobiology	CHEM 210*, General Chemistry 1 (4 cr.)
ASTR 106*, Concepts of the Solar System	CHEM 211*, General Chemistry 2 (4 cr.)
ASTR 107 <sup>2</sup> , Concepts of Stars and the Universe	CHEM 307*, Advanced Forensic Science
<b>ASTR 120</b> * <sup>8</sup> , Archaeoastronomy	GEOG 272*, Physical Geography
ASTR 205*, General Astronomy (4 cr.)	PHYS 101, Famous People of Science
BIOL 101* <sup>10</sup> , Environment and Society	PHYS 103*, Concepts in Physics
BIOL 102* <sup>10</sup> , The Living World	PHYS 208 <sup>10</sup> , Energy and Environment
BIOL 103*, Human Biology	PHYS 231*, General Physics I (4 cr.)
BIOL 104*, Human Disorders (Topical)	PHYS 232*, General Physics II (4 cr.)
<b>BIOL 106</b> , Cultural Botany	PHYS 234*, Classical Physics I (5 cr.)
<b>BIOL 107</b> *, Biology of Women	PHYS 235*, Classical Physics II (5 cr.)



# LIBERAL EDUCATION PROGRAM

## Goal 4: Mathematical/Logical Reasoning (1 course)

CSCI 200, Elements of Computing  
 MATH 112, College Algebra  
 MATH 113, Trigonometry  
 MATH 115, Precalculus (5 cr.)  
 MATH 193, Mathematical Thinking  
 MATH 196, Finite Mathematics  
 MATH 201, Elements of Mathematics I

MATH 211, Survey of Calculus I  
 MATH 221, Calculus I (4 cr.)  
 MATH 222, Calculus II (4 cr.)  
 PHIL 223, Elementary Symbolic Logic  
 STAT 193, Statistical Thinking  
 STAT 219, Statistics for the Social Sciences  
 STAT 239, Statistics for the Biological and Physical Sciences

## Goal 5: History and the Social and Behavioral Sciences (2 courses with no more than 4 credits from one rubric or academic area)

**AFST 250**<sup>8</sup>, Introduction to African Studies  
**ANTH 101**<sup>8</sup>, Introduction to Anthropology  
**ANTH 130**, Introduction to Prehistoric Cultures  
**ANTH 188**, Indians of the Americas  
 ANTH 198, The Anthropology of Modern American Life  
 ART 231<sup>6</sup>, Art History Survey II  
 BRIT 250, Contemporary Britain  
 CEEP 101, Applying Psychology (*same as CPSY 101*)  
 CEEP 262, Human Growth and Development  
 CFS 220, Introduction to Parents and Children  
 CJS 100, History of Criminal Justice  
 CJS 101, Survey of Criminal Justice  
**CJS 111**, Crime and Justice in America  
 CMTY 200<sup>8</sup>, Cities, Suburbs, and Small Towns  
**CMTY 222**, Diversity in the American Experience  
 CMTY 394, Urban Planning (*same as GEOG 394*)  
 CMST 220, Interpersonal Communication  
 CPSY 101, Applying Psychology (*same as CEEP 101*)  
**CSD 130**<sup>7</sup>, Introduction to Human Communication Disorders  
**EAST 250**<sup>8</sup>, Introduction to East Asia  
 ECON 197, Economics for Everyday Life  
 ECON 201, Introduction to Economics  
 ECON 205, Principles of Macroeconomics  
 ECON 206, Principles of Microeconomics  
 ECON 381, Economics of Crime and Justice  
 ETHS 312, American Indian Women's Lives  
**ETHS 335**, Asian Pacific American Women  
**ETHS 345**<sup>6</sup>, Asian Pacific Americans in Popular Culture  
 ETHS 410, Contemporary American Indian Issues  
**ETHS 425**, Contemporary Asian Pacific American Issues  
 ETS 182<sup>8</sup>, Modern Technology and Civilization  
**ETS 183**<sup>8</sup>, Technology and Third World Development  
 ETS 375<sup>10</sup>, Society and the Environment

GEOG 271, Economic Geography  
 GEOG 394, Urban Planning (*same as CMTY 394*)  
**GERO 208**, Introduction to Gerontology  
**GERO 405**, Aging and Diversity  
**GERO 415**, Women and Aging  
 HIST 101<sup>8</sup>, Studies in World History  
**HIST 106**<sup>8</sup>, Historical Studies  
**HIST 109**<sup>7</sup>, Race in America  
 HIST 140, America to 1865  
 HIST 141, United States Since 1865  
**HIST 150**<sup>8</sup>, Twentieth Century World  
 HIST 195<sup>9</sup>, Democratic Citizenship  
 HIST 210<sup>8</sup>, Western Civilization I: Antiquity to 1500  
 HIST 211<sup>8</sup>, Western Civilization II: 1500-Present  
**HIST 352**<sup>7</sup>, American Indian History  
**HIST 358**<sup>7</sup>, Immigration, Race and Ethnicity  
**LAST 250**<sup>8</sup>, Introduction to Latin America  
 POL 111<sup>9</sup>, American National Government  
 PSY 115, Introduction to Psychology  
**PSY 225**, Psychology of Women  
 PSY 228<sup>10</sup>, Conservation Psychology  
 PSY 240, Developmental Psychology  
**SOC 111**<sup>9</sup>, Social Problems  
 SOC 160, Principles of Sociology  
 SOC 177, Intimate Relations and Family  
**SOC 200**<sup>10</sup>, Environmental Sociology  
**SOC 211**, Crime Myths and Media  
**SOC 273**<sup>8</sup>, Sociology of Gender  
**SOC 276**<sup>8</sup>, Families and Globalization  
**SPED 203**, Exceptionalities and Human Diversity  
 TH 270<sup>6</sup>, American Musical Theatre  
**WS 201**, Introduction to Women's Studies

## Goal 6: Humanities and Fine Arts (2 courses with no more than 4 credits from one rubric or academic area)

ART 130, Studio Art for Non-Majors  
**ART 131**<sup>8</sup>, Introduction to the Visual Arts of the World  
 ART 230<sup>8</sup>, Art History Survey I  
 ART 231<sup>5</sup>, Art History Survey II  
 ART 333, Art and Literature  
**ART 433**<sup>8</sup>, Asian Art History  
**ART 434**<sup>8</sup>, African Art History  
**ART 435**<sup>8</sup>, Art History of the Americas  
**ART 490**<sup>8</sup>, Folk, Ethnic, and Indigenous Art  
**COMM 146**, American Television and Cultural Diversity  
 COMM 220, Introduction to Mass Communications  
**COMM 275**, Documentaries of the Holocaust  
 CMST 210, Performance and Everyday Life  
 CMST 211, Public Speaking  
 CMST 306<sup>2</sup>, Rhetoric in Popular Culture  
 CMST 316, Speech Writing  
 DANC 142, Dance for Everyone  
**DANC 341**<sup>8</sup>, Global Dance Perspectives  
 ENGL 184, Introduction to Literature  
 ENGL 201, Classics of Literature  
 ENGL 202, Myth, Legend, and Sacred Literatures  
**ENGL 203**, Gender Issues in Literature

**ENGL 215**, American Indian Literature  
**ENGL 216**<sup>7</sup>, African American Literature  
**ENGL 305**, Lesbian, Gay, Bisexual, Transgender Literature (4 cr.)  
 ENGL 306<sup>2</sup>, Rhetoric in Popular Culture  
 ETHS 301, Special Topics in American Indian Studies  
 ETHS 307, Chicano/a Cultural Expressions  
**ETHS 345**<sup>5</sup>, Asian Pacific Americans in Popular Culture  
 FREN 101<sup>8</sup>, Elementary French I (4 cr.)  
 FREN 102<sup>8</sup>, Elementary French II (4 cr.)  
 FREN 110<sup>8</sup>, Introduction to French Culture  
 FREN 201<sup>8</sup>, Intermediate French I (4 cr.)  
 FREN 202<sup>8</sup>, Intermediate French II (4 cr.)  
 FS 175, Film and Culture  
 FS 260, The Art of Film  
**GEOG 270**, Introduction to Cultural Geography  
 GER 101<sup>8</sup>, Elementary German I (4 cr.)  
 GER 102<sup>8</sup>, Elementary German II (4 cr.)  
 GER 110<sup>8</sup>, Introduction to German Culture  
 GER 201<sup>8</sup>, Intermediate German I (4 cr.)  
 GER 202<sup>8</sup>, Intermediate German II (4 cr.)  
 HUMS 250, Introduction to the Humanities  
 IM 260, Exploring Digital Media

# LIBERAL EDUCATION PROGRAM

## (Goal 6, continued)

**JPN 101<sup>8</sup>**, Elementary Japanese I (4 cr.)  
**JPN 102<sup>8</sup>**, Elementary Japanese II (4 cr.)  
 JPN 201<sup>8</sup>, Intermediate Japanese I (4 cr.)  
 JPN 202<sup>8</sup>, Intermediate Japanese II (4 cr.)  
 LC 101<sup>8</sup>, Elementary Language I (Topical) (4 cr.)  
 LC 102<sup>8</sup>, Elementary Language II (Topical) (4 cr.)  
 LC 201<sup>8</sup>, Intermediate Languages I (Topical) (4 cr.)  
 LC 202<sup>8</sup>, Intermediate Languages II (Topical) (4 cr.)  
 MUSM 100, Introduction to Musical Concepts  
 MUSM 123, Experiencing Live Music  
**MUSM 125<sup>8</sup>**, Music in World Culture  
 MUSM 126, History of Rock and Roll Music  
 MUSM 229, Jazz History  
 MUSP 110-148, Private Lessons (1-3 cr.)  
 MUSP 159<sup>8</sup>, World Drumming Group (1 cr.)  
 MUSP 155-367, Ensembles (1 cr.)  
 MUSP 358, Chamber Singers (1 cr.)  
**PHIL 111<sup>8</sup>**, Multicultural Philosophy  
 PHIL 112, Philosophical Explorations  
 PHIL 116, Elementary Topics in Philosophy (1-3 cr.)  
**PHIL 211<sup>8</sup>**, Philosophy and Feminism  
 PHIL 212<sup>2</sup>, Moral Problems and Theories

PHIL 221, Philosophy of Religion  
 PHIL 222, Existentialism  
 PHIL 251, History of Western Philosophy I  
 PHIL 252, History of Western Philosophy II  
**REL 100<sup>8</sup>**, World Religions  
 REL 150, Introduction to the Old Testament/Hebrew Bible  
 RUSS 101<sup>8</sup>, Elementary Russian I (4 cr.)  
 RUSS 102<sup>8</sup>, Elementary Russian II (4 cr.)  
 RUSS 110<sup>8</sup>, Introduction to Russian Culture  
 RUSS 201<sup>8</sup>, Intermediate Russian I (4 cr.)  
 RUSS 202<sup>8</sup>, Intermediate Russian II (4 cr.)  
 SPAN 101<sup>8</sup>, Elementary Spanish I (4 cr.)  
 SPAN 102<sup>8</sup>, Elementary Spanish II (4 cr.)  
 SPAN 110<sup>8</sup>, Introduction to Spanish-Speaking Cultures Through Film and Music  
 SPAN 201<sup>8</sup>, Intermediate Spanish I (4 cr.)  
 SPAN 202<sup>8</sup>, Intermediate Spanish II (4 cr.)  
**TH 130<sup>8</sup>**, World Theatre  
 TH 148, Acting for Everyone  
 TH 270<sup>5</sup>, American Musical Theatre  
 WS 330, Gender and Popular Culture

## Goal 7: Human Diversity (1 course)

**CSD 130<sup>5</sup>**, Introduction to Human Communication Disorders  
**ENGL 216<sup>6</sup>**, African American Literature (RIS)  
**ETHS 111**, Race in America (RIS)  
**ETHS 201**, Introduction to Ethnic Studies (RIS)  
**ETHS 205**, Introduction to Chicano/a Studies (RIS)  
**ETHS 210**, Introduction to American Indian Studies (RIS)  
**ETHS 215**, Introduction to Asian American Studies (RIS)  
**ETHS 220**, Introduction to African American Studies (RIS)  
**ETHS 308**, African American Cultural Expressions  
**ETHS 310**, American Indians in the Social Science Curriculum (RIS)  
**ETHS 408**, Major Works in African American Studies

**ETHS 470**, The Black Community (RIS)  
**HIST 109<sup>5</sup>**, Race in America (RIS)  
**HIST 352<sup>5</sup>**, American Indian History  
**HIST 358<sup>5</sup>**, Immigration, Race and Ethnicity  
**HURL 102**, Human Relations and Race (RIS)  
**JWST 180**, Anti-Semitism in America  
**POL 310**, U.S. Politics of Race, Ethnicity, and Immigration (RIS)  
**REL 180**, Religion: Race and Racism  
**SOC 268**, Race and Ethnicity (RIS)  
**WS 220**, Race and Gender in the U.S. (RIS)

## Goal 8: Global Perspective (1 course)

**AFST 250<sup>5</sup>**, Introduction to African Studies  
**ANTH 101<sup>5</sup>**, Introduction to Anthropology  
**ART 131<sup>6</sup>**, Introduction to the Visual Arts of the World  
 ART 230<sup>6</sup>, Art History Survey I  
**ART 433<sup>6</sup>**, Asian Art History  
**ART 434<sup>6</sup>**, African Art History  
**ART 435<sup>6</sup>**, Art History of the Americas  
**ART 490<sup>6</sup>**, Folk, Ethnic, and Indigenous Art  
**ASTR 120<sup>3</sup>**, Archaeoastronomy  
 BLAW 230, Consumer and Personal Law  
 BRIT 101, Introduction to the British Cultural Experience (1 cr.)  
 BRIT 201, Reflections on the British Cultural Experience (2 cr.)  
**CFS 260**, Children in a Changing World  
**CMST 330**, Intercultural Communication  
 CMTY 200<sup>5</sup>, Cities, Suburbs, and Small Towns  
**CSD 230**, Global Perspectives on Communication Disorders  
**DANC 341<sup>6</sup>**, Global Dance Perspectives  
**EAST 250<sup>5</sup>**, Introduction to East Asia  
**ECON 350**, Economics of Developing Countries  
 ETS 182<sup>5</sup>, Modern Technology and Civilization  
**ETS 183<sup>5</sup>**, Technology and Third World Development  
 ETS 185<sup>10</sup>, Energy Resources and Issues  
 FREN 101<sup>6</sup>, Elementary French I (4 cr.)  
 FREN 102<sup>6</sup>, Elementary French II (4 cr.)  
 FREN 110<sup>6</sup>, Introduction to French Culture  
 FREN 201<sup>6</sup>, Intermediate French I (4 cr.)  
 FREN 202<sup>6</sup>, Intermediate French II (4 cr.)  
**GEOG 111**, Introduction to Global Geography

GER 101<sup>6</sup>, Elementary German I (4 cr.)  
 GER 102<sup>6</sup>, Elementary German II (4 cr.)  
 GER 110<sup>6</sup>, Introduction to German Culture  
 GER 201<sup>6</sup>, Intermediate German I (4 cr.)  
 GER 202<sup>6</sup>, Intermediate German II (4 cr.)  
 GLST 195<sup>9</sup>, Global Society and Citizenship  
 HIST 101<sup>5</sup>, Studies in World History  
**HIST 106<sup>5</sup>**, Historical Studies  
**HIST 150<sup>5</sup>**, Twentieth Century World  
 HIST 210<sup>5</sup>, Western Civilization I: Antiquity to 1500  
 HIST 211<sup>5</sup>, Western Civilization II: 1500-Present  
 HURL 303<sup>10</sup>, Global Social and Environmental Justice  
**IM 204**, Research Strategies in a Changing World  
**JPN 101<sup>6</sup>**, Elementary Japanese I (4 cr.)  
**JPN 102<sup>6</sup>**, Elementary Japanese II (4 cr.)  
 JPN 201<sup>6</sup>, Intermediate Japanese I (4 cr.)  
 JPN 202<sup>6</sup>, Intermediate Japanese II (4 cr.)  
**LAST 250<sup>5</sup>**, Introduction to Latin America  
 LC 101<sup>6</sup>, Elementary Language I (Topical) (4 cr.)  
 LC 102<sup>6</sup>, Elementary Language II (Topical) (4 cr.)  
 LC 201<sup>6</sup>, Intermediate Languages I (Topical) (4 cr.)  
 LC 202<sup>6</sup>, Intermediate Languages II (Topical) (4 cr.)  
**LIB 290**, Social Media in a Global Context  
 MGMT 260, Principles of International Business  
 MKTG 100, Contemporary Business Concepts  
 MKTG 200, Principles of Entrepreneurship  
**MUSM 125<sup>6</sup>**, Music in World Culture

# LIBERAL EDUCATION PROGRAM

## (Goal 8, continued)

MUSP 159<sup>6</sup>, World Drumming Group (1 cr.)

**PHIL 111<sup>6</sup>**, Multicultural Philosophy

**PHIL 211<sup>6</sup>**, Philosophy and Feminism

PHIL 484<sup>9</sup>, Global Business Ethics

POL 101, Political Ideas and Institutions

POL 251, Introduction to World Politics

POL 333, Latin American Government and Politics

POL 334, Middle East Government and Politics

**POL 335**, African Government and Politics

**POL 337**, Emerging Political Issues in the Nonwestern World

**POL 434**, Politics of the Arab Peninsula

**POL 436**, Southeast Asian Governments and Politics

**REL 100<sup>6</sup>**, World Religions

**REL 225**, Asian Religions

RUSS 101<sup>6</sup>, Elementary Russian I (4 cr.)

RUSS 102<sup>6</sup>, Elementary Russian II (4 cr.)

RUSS 110<sup>6</sup>, Introduction to Russian Culture

RUSS 201<sup>6</sup>, Intermediate Russian I (4 cr.)

RUSS 202<sup>6</sup>, Intermediate Russian II (4 cr.)

**SOC 273<sup>5</sup>**, Sociology of Gender

**SOC 276<sup>5</sup>**, Families and Globalization

SPAN 100, Spanish for Health Care Professionals

SPAN 101<sup>6</sup>, Elementary Spanish I (4 cr.)

SPAN 102<sup>6</sup>, Elementary Spanish II (4 cr.)

SPAN 110<sup>6</sup>, Introduction to Spanish Speaking Cultures Through Film and Music

SPAN 201<sup>6</sup>, Intermediate Spanish I (4 cr.)

SPAN 202<sup>6</sup>, Intermediate Spanish II (4 cr.)

**TH 130<sup>6</sup>**, World Theatre

WS 340, Global Feminisms

## Goal 9: Ethical and Civic Responsibility (1 course)

CMTY 195, Community and Democratic Citizenship

ECE 101, Introduction to the Engineering Profession (*same as GENG 101*)

ECON 195, Economics and Democratic Citizenship

GENG 101, Ethics and the Engineering Profession (*same as ECE 101*)

GLST 195<sup>8</sup>, Global Society and Citizenship

HIST 195<sup>5</sup>, Democratic Citizenship

**HURL 201**, Non-Oppressive Relationships I

LC 445, Service Learning Experience (2-4 cr.)

PHIL 212<sup>6</sup>, Moral Problems and Theories

PHIL 213<sup>10</sup>, Environmental Ethics

PHIL 484<sup>8</sup>, Global Business Ethics

POL 111<sup>5</sup>, American National Government

**POL 320**, Women in Politics

REL 201, Religious Pluralism

**SOC 111<sup>5</sup>**, Social Problems

SW 195, Social Welfare and Democratic Citizenship

## Goal 10: People and the Environment (1 course)

AHS 106<sup>3</sup>, Natural Hazards and Human Society

ANTH 352, Human Ecology

BIOL 101\*<sup>3</sup>, Environment and Society

BIOL 102\*<sup>3</sup>, The Living World

BIOL 152\*<sup>3</sup>, Organismal Diversity (4 cr.)

CHEM 105<sup>3</sup>, Chemistry and the Environment

ETS 185<sup>8</sup>, Energy Resources and Issues

ETS 260, Introduction to Environmental Studies

ETS 363, Resource Management

ETS 375<sup>5</sup>, Society and the Environment

GEOG 106, People and the Planet

GEOG 372, Conservation of World Resources

HURL 303<sup>8</sup>, Global Social and Environmental Justice

PHIL 213<sup>9</sup>, Environmental Ethics

PHYS 208<sup>3</sup>, Energy and Environment

POL 453, Global Environmental Politics and Policies

PSY 228<sup>5</sup>, Conservation Psychology

**SOC 200<sup>5</sup>**, Environmental Sociology

### DIVERS

**ED 250**, Children's Rights

**ED 374**, Multicultural Children's Literature

**ETHS 350**, Minorities in Latin America

**HURL 206**, Understanding Oppression (1 cr.)

**HURL 497**, Human Relations for Teachers I

**HURL 498**, Human Relations for Teachers II (1 cr.)

**LAST 350**, Minorities in Latin America

**PESS 125**, Social Dance

**SOV 100**, Introduction to Soviet and Eurasian Studies

## STUDENTS TRANSFERRING IN COLLEGE CREDITS

St. Cloud State also accepts the completed Minnesota Transfer Curriculum (MnTC) as fulfilling the SCSU Liberal Education Program, including diversity requirements.

Students with a partially completed MnTC are not required to repeat any goals they have already fulfilled at another Minnesota State College or University, and will be allowed to select from the course list above to complete the remaining ten MnTC goals.

Students with 20 or more transfer credits in Liberal Education will be required to complete fewer than three Diversity courses. For more information, see your Degree Audit Report or contact Advising and Student Transitions.

# ACADEMIC RUBRICS

---

<b>ACCT</b>	Accounting	<b>HUMS</b>	Humanities
<b>AFST</b>	African Studies	<b>HURL</b>	Human Relations & Multicultural Education
<b>AHS</b>	Atmospheric & Hydrologic Sciences	<b>IM</b>	Information Media
<b>ANTH</b>	Anthropology	<b>INTL</b>	International Studies
<b>ART</b>	Art	<b>IS</b>	Information Systems
<b>ASTR</b>	Astronomy	<b>JPN</b>	Japanese
<b>BIOL</b>	Biological Sciences	<b>JWST</b>	Jewish Studies
<b>BLAW</b>	Business Law	<b>LAST</b>	Latin American Studies
<b>BRIT</b>	British Studies	<b>LC</b>	Languages and Cultures
<b>CEEP</b>	Counselor Education & Educational Psychology	<b>LIB</b>	Learning Resources & Services
<b>CFS</b>	Child & Family Studies	<b>MATH</b>	Mathematics
<b>CHEM</b>	Chemistry	<b>MILS</b>	Military Science
<b>CJS</b>	Criminal Justice Studies	<b>MGMT</b>	Management
<b>CMST</b>	Communication Studies	<b>MKTG</b>	Marketing
<b>CMTY</b>	Planning & Community Studies	<b>MLS</b>	Medical Laboratory Science
<b>CNA</b>	Computer Networking & Applications	<b>MME</b>	Mechanical & Manufacturing Engineering
<b>COLL</b>	College Transitions	<b>MUSE</b>	Music Education
<b>COMM</b>	Mass Communications	<b>MUSM</b>	Music Musicianship
<b>CPSY</b>	Community Psychology	<b>MUSP</b>	Music Performance
<b>CSCI</b>	Computer Science	<b>NMDT</b>	Nuclear Medicine Technology
<b>CSD</b>	Communication Sciences & Disorders	<b>NURS</b>	Nursing
<b>DANC</b>	Dance	<b>PESS</b>	Physical Education & Sport Science
<b>EAP</b>	English for Academic Purposes	<b>PHIL</b>	Philosophy
<b>EAST</b>	East Asian Studies	<b>PHYS</b>	Physics
<b>ECE</b>	Electrical & Computer Engineering	<b>POL</b>	Political Science
<b>ECON</b>	Economics	<b>PSY</b>	Psychology
<b>ED</b>	Education (Teacher Development)	<b>RADT</b>	Radiologic Technology
<b>ENGL</b>	English	<b>REC</b>	Recreation
<b>ENGR</b>	Engineering Science	<b>REL</b>	Religious Studies
<b>ETHS</b>	Ethnic Studies	<b>RUSS</b>	Russian
<b>ETS</b>	Environmental & Technological Studies	<b>SCI</b>	Science
<b>FIRE</b>	Finance, Insurance & Real Estate	<b>SE</b>	Software Engineering
<b>FREN</b>	French	<b>SHHS</b>	School of Health & Human Services
<b>FS</b>	Film Studies	<b>SOC</b>	Sociology
<b>GENG</b>	General Engineering	<b>SOV</b>	Soviet Studies
<b>GEOG</b>	Geography	<b>SPAN</b>	Spanish
<b>GER</b>	German	<b>SPED</b>	Special Education
<b>GERO</b>	Gerontology	<b>SSCI</b>	Social Science
<b>GLST</b>	Global Studies	<b>SST</b>	Social Studies
<b>HBS</b>	Herberger Business School	<b>STAT</b>	Statistics
<b>HIST</b>	History	<b>STEM</b>	Science, Technology, Engineering, & Math Education
<b>HLTH</b>	Health	<b>SW</b>	Social Work
<b>HONS</b>	Honors Program	<b>TH</b>	Theatre
<b>HPE</b>	Health & Physical Education	<b>WS</b>	Women's Studies



# In rhythm with your Campus Life



We are proud to serve St. Cloud State University by offering a flexible set of banking services designed to meet your needs.

## St. Cloud State University TCF Campus Card Student Checking<sup>1</sup>

- No monthly maintenance fees
- No minimum balance
- No minimum opening deposit
- TCF Debit Card and free withdrawals at TCF ATMs
- TCF fee waived for up to four withdrawals per statement cycle at non-TCF ATMs<sup>2</sup>
- Free St. Cloud State University-style checks<sup>3</sup>
- TCF Regular Savings account available

Other fees may apply. See a TCF Professional for more details.

1-800-TCF-BANK | [tcfbank.com](http://tcfbank.com)

<sup>1</sup>You must be a student enrolled and attending St. Cloud State University to be eligible for this account type. This account is also referred to as "TCF Campus Card Checking" in the account contract. TCF has a school arrangement with this university to offer on campus banking services to their students, faculty and staff. <sup>2</sup>No TCF fee for up to four ATM withdrawals per monthly statement period at non-TCF ATMs located in the states of Minnesota and South Dakota. No TCF fee for any ATM withdrawals at non-TCF ATMs outside the states of Minnesota and South Dakota and outside of the U.S. The ATM operator may charge a fee. <sup>3</sup>Checks not required to obtain account. <sup>4</sup>Free sweatshirt with first deposit of \$25 or more into a new TCF Campus Card checking account. Limit one sweatshirt per customer. Recipient is responsible for all applicable taxes.  
©2016 TCF National Bank. Member FDIC. [tcfbank.com](http://tcfbank.com)

## Getting started is fast, easy and secure.

### Step 1: Start by applying online

Save time by starting your application online. All you need is your orientation date, SSN or ITIN and information from your student I.D. and government-issued photo ID.

### Step 2: Finish on campus

Visit the TCF Bank inside Atwood Memorial Center to complete the account-opening process and activate your account. Bring your photo ID with you, and simply let a TCF Professional know you've already completed the online account application.

Get a free SCSU sweatshirt  
when you open an account  
with \$25 or more.<sup>4</sup>



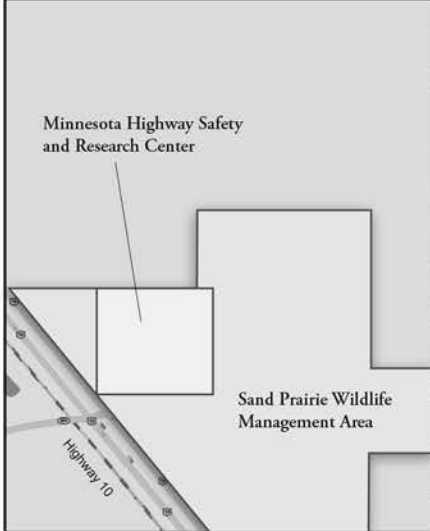
 **tcf**bank



**COBORN PLAZA APARTMENTS AND WELCOME CENTER**

**Fifth Avenue South and Ramsey Place**

St. Cloud State leases a 453-student housing complex and 12,000-square-foot Welcome Center in Coborn Plaza. Located a block north of campus, Coborn Plaza honors the Coborn family whose grocery chain had a store on the site. The Welcome Center and housing complex opened August 2010. About 20,000 square-feet of retail space is being developed beneath the student housing.



**MINNESOTA HIGHWAY SAFETY AND RESEARCH CENTER**

**1805 U.S. Highway 10**

Located on 160 acres east of campus, the center's three miles of paved track and two miles of gravel track host year-round vehicle training. Offerings include driving skills courses for law enforcement personnel and construction truck operators. The center is north of Sand Prairie Wildlife Management Area on U.S. Highway 10.



**SAND PRAIRIE WILDLIFE MANAGEMENT AREA**

**East of campus on U.S. Highway 10**

St. Cloud State owns 70 percent of this 700-acre natural area, which is managed by the Department of Natural Resources. Sand Prairie has two restored wetlands, a restored prairie, native prairie brush land and woods. Beaver, deer, fox, green herons, American woodcock, blue-winged teal, sand hill cranes, wild turkey and other wildlife can be seen from the observation deck, boardwalk and trails.



**SELKE FIELD**

**1000 block of University Drive**

The former site of St. Cloud State football games and track meets is now the home of Husky softball. Youth soccer teams, club rugby teams and the like use the irrigated turf field. Named for former President George Selke, the 17-acre property is famed for its massive granite walls. It is located five blocks east of campus on University Drive.



**TALAHI WOODS**

**Minnesota Boulevard and Ninth Avenue Southeast**

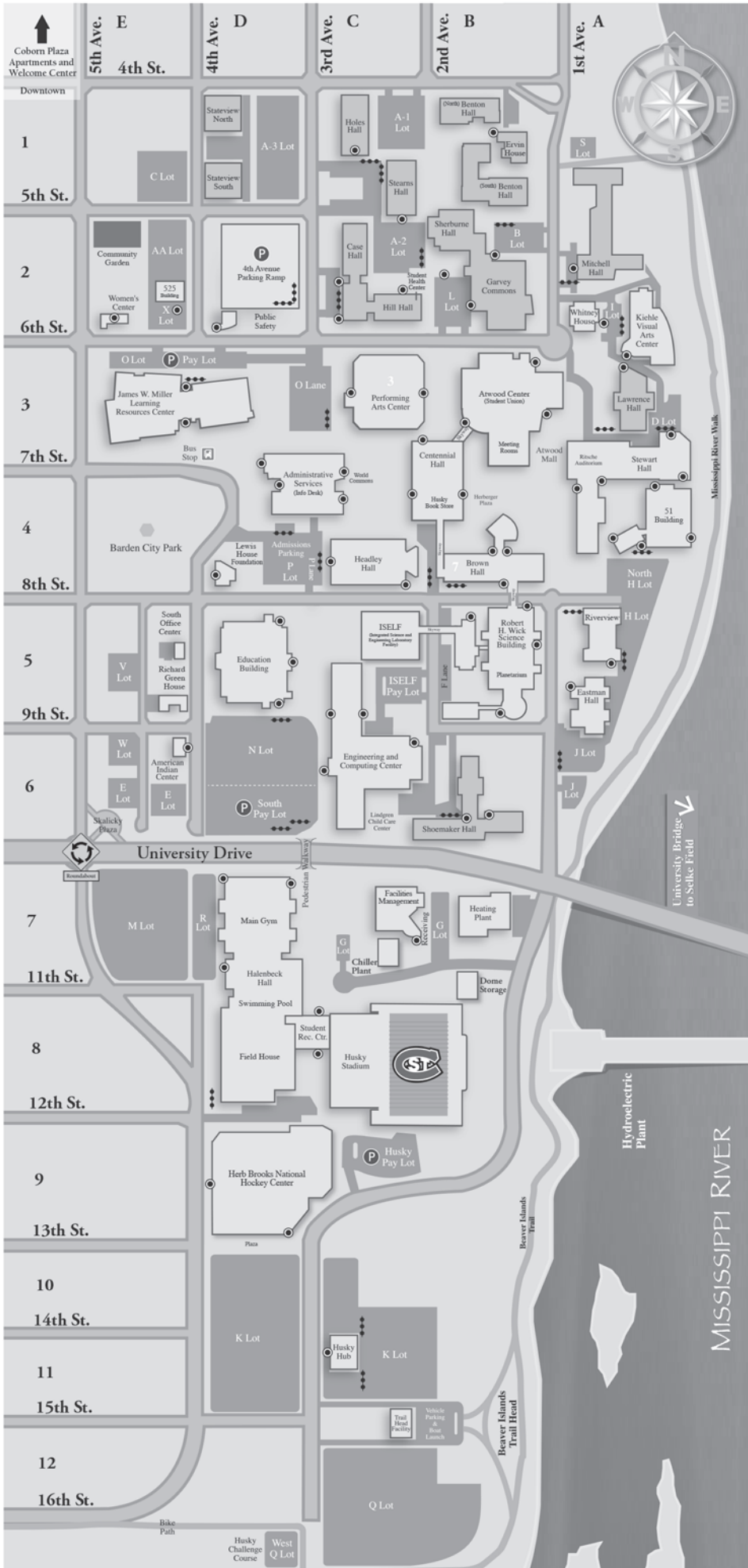
Talahi Woods is on the Mississippi River south of Riverside Park. The elevated woody tract offers views of the Beaver Islands. It is fenced on its landward side, which abuts Killian Boulevard/Minnesota Drive/9th Avenue SE. Its trails are used by students and the public for casual recreation, especially cross country skiing. Faculty sometimes use it for class activities.



**TWIN CITIES GRADUATE CENTER**

**6401 Sycamore Court N., Maple Grove, MN 55369**

St. Cloud State leases space for professional-level graduate classes and programs in Sycamore Plaza, Maple Grove. Located near I-494 and Bass Lake Road, the Twin Cities Graduate Center's offerings include courses in educational counseling, business management, and regulatory affairs and services.



# CAMPUS MAP ST. CLOUD STATE UNIVERSITY

Visit [www.StCloudState.edu/campusmap/](http://www.StCloudState.edu/campusmap/)

## TO REACH THE CAMPUS

- **From Interstate 94:** Take Exit 171. Drive north into St. Cloud on Stearns County Road 75. At 22nd Street South turn east. At Clearwater Road turn north. Follow the signs to campus.
- **From U.S. Highway 10:** Exit west on Minnesota Highway 23. Cross the Mississippi River on the Granite City Crossing Bridge. At Fifth Avenue turn south. Follow the banners to campus.
- **From the southwest (Minnesota Highways 15 and 23 and Stearns County Road 75):** All routes link with Division Street. Turn south at Fifth Avenue. Follow the banners to campus.
- **From the east (Minnesota Highway 23):** Follow Minnesota Highway 23 into St. Cloud. Cross the Mississippi River at the Granite City Crossing bridge. Turn south on Fifth Avenue. Follow the banners to campus.

## LEGEND

AS	Administrative Services, 720 4th Ave S	C4
AIC	American Indian Center, 901 4th Ave S	E6
AMC	Atwood Center (Student Union), 651 1st Ave S	B3
BTH	Benton Hall, 445 1st Ave S	B1
BH	Brown Hall, 151 8th St S	B4
CPA	Coborn Plaza Apartments, 500 3rd St S	E1
CPW	Coborn Plaza Welcome Center, 355 5th Ave S	E1
CG	Community Garden	E2
CSH	Case Hall, 550 3rd Ave S	C2
CH	Centennial Hall, 201 8th St S (Husky Bookstore)	B4
ECC	Engineering and Computing Center, 910 3rd Ave S	C6
EH	Eastman Hall, 850 1st Ave S	A5
EB	Education Building, 840 4th Ave S	D5
ErH	Ervin House, 425 1st Ave S	B1
FLD	Husky Field	B8
FM	Facilities Management, 211 11th St S	C7
GC	Garvey Commons, 577 1st Ave S	B2
HaH	Halenbeck Hall, 1000 4th Ave S	D7
HBHNC	Herb Brooks National Hockey Center, 1204 4th Ave S	D9
HH	Headley Hall, 225 8th St S	C4
HiHH	Health Center, 550 3rd Ave S	C2
HP	Heating Plant, 1025 1st Ave S	B7
HiH	Hill Hall, 550 3rd Ave S	C2
HoH	Holes Hall, 400 3rd Ave S	C1
Hub	Husky Hub, 1420 3rd Ave S	C11
HS	Husky Stadium, 1111 3rd Ave S	C8
ISELF	Integrated Science and Engineering Laboratory Facility, 230 8th St S	C5
KVAC	Kiehle Visual Arts Center, 580 1st Ave S	A2
LH	Lawrence Hall, 650 1st Ave S	A3
LeH	Lewis House, 724 4th Ave S	D4
MC	James W. Miller Learning Resources Center (library), 400 6th St S	D3
MH	Mitchell Hall, 566 1st Ave S	A2
PA	Performing Arts Center, 620 3rd Ave S	C3
PR	Public Parking Ramp, 516 4th Ave So	D2
PSC	Public Safety Center, 526 4th Ave So	D2
RGH	Richard Green House, 827 4th Ave So	E5
R	Ritsche Auditorium (Stewart Hall)	A4
Riv	Riverview, 826 1st St S	A5
SBH	Sherburne Hall, 525 1st Ave S	B2
SMH	Shoemaker Hall, 915 1st Ave S	B6
SOC	South Office Center, 809 4th Ave S	E5
SVN	Stateview North, 410 4th Ave S	D1
SVS	Stateview South, 422 4th Ave S	D1
STH	Stearns Hall, 410 3rd Ave S	C1
SH	Stewart Hall (Ritsche Auditorium), 702 1st Ave S	A4
SRC	Student Recreation Center, 1111 3rd Ave S	C8
WH	Whitney House, 576 1st Ave S	A2
WSB	Robert H. Wick Science Building (Planetarium), 825 1st Ave S	B5
WC	Women's Center, 520 5th Ave S	E2
51B	51 Building, 51 8th St S	A4
525	525 Building, 525 4th Ave S	E2

Handicapped Parking  
Wheelchair Accessible Entrance  
Public Parking







REQUEST MORE INFORMATION

[WWW.STCLOUDSTATE.EDU/ADVISING](http://WWW.STCLOUDSTATE.EDU/ADVISING)

## CONTACT INFO

### ADVISING CENTER

366 Centennial Hall  
720 Fourth Ave. S.  
St. Cloud, Minnesota 56301-4498

### TELEPHONE

320.308.6075  
1.877.654.SCSU[7278]

### EMAIL

[advising@stcloudstate.edu](mailto:advising@stcloudstate.edu)



ST. CLOUD STATE  
UNIVERSITY

EDUCATION FOR LIFE.

St. Cloud State University does not discriminate on the basis of race, sex, color, creed, religion, age, national origin, disability, marital status, status with regards to public assistance, sexual orientation, gender identity, gender expression, or status as a U.S. veteran. The Title IX coordinator at SCSU is Dr. Ellyn Bartges. For additional information, contact the Office for Institutional Equity & Access, (320) 308-5123, Admin. Services Bldg. Rm 102.



A MEMBER OF THE MINNESOTA STATE COLLEGES  
AND UNIVERSITIES SYSTEM

APRIL 2016

