

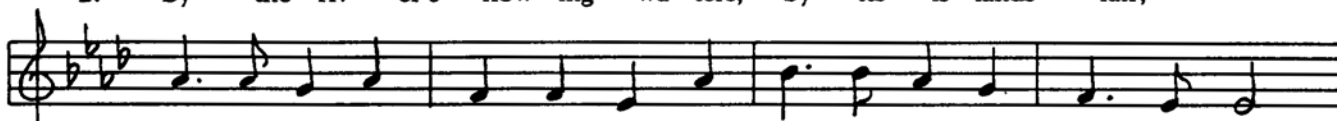
University Hymn

Amy Dale

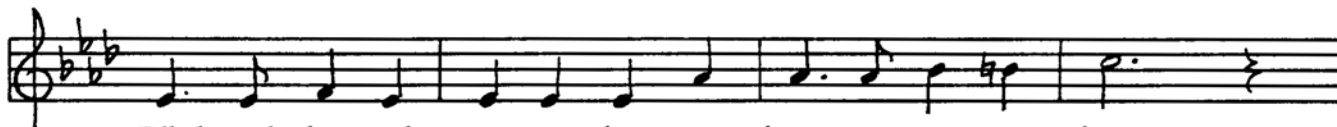
Harvey Waugh



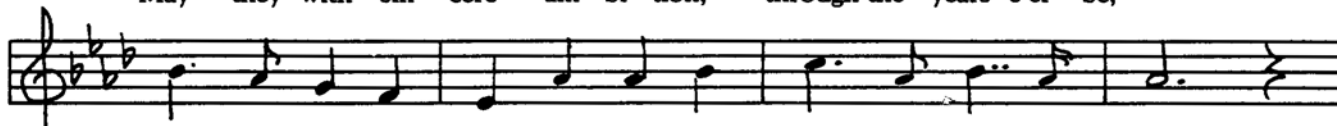
1. Sing to thee, our Alma Mater, high on oak-crowned banks,
2. By the riv - er's flow - ing wa - ters, by its is - lands fair,



Em - blem of our search for know - ledge, symbol of our youth - ful ranks.
May the loy - al sons and daughters, thy en - dur - ing friend - ship share.



Filled with fires of true am - bi - tion, let us ev - er be;
May they with sin - cere am - bi - tion, through the years e'er be;



Loy - al to thy fine tra - di - tion. Hail, St. Cloud, to thee!
Loy - al to thy fine tra - di - tion. Hail, St. Cloud, to thee!