

Critical, Public & Practical Sociology

Getting the Most of Your Education
ISSUE 01 August 2011

"to educate"

this issue

Changes to Program P.1
Sociologists of Minnesota P.2
Becoming a Major P.3
Building a Resume P.4

Why Critical is Important

All sociology is implicitly critical because the sociological perspective questions and debunks what common sense takes for granted. Some sociology is explicitly critical of how the domination of states, corporations, the media, and other powerful institutions attenuate our potential for living autonomous lives in today's world. ~Steven M. Buechler

Sociology Around the Web

- ⇒ This Week in Sociology <http://www.thisweekinsociology.com/>
- ⇒ Sociological Images <http://thesocietypages.org/socimages/>
- ⇒ The Global Sociology Blog <http://globalsociology.com/>
- ⇒ Who Rules America? <http://sociology.ucsc.edu/whorulesamerica/about.html>

Applied Sociology is making some changes

As you can tell from the title of the newsletter, we are working on changing the name of the applied sociology major and revising the course requirements. However, most changes will not impact currently declared majors as you will be held to the requirements from when you signed up.

For the highlights:

- We are increasing credits to 45 so that minors would be optional
- We will have student developed themes rather than emphasis areas.
- The required courses will be grouped by theoretical or methodological emphasis to make it more understandable and attractive to graduate programs.
- Sociological practice is a more general term for both Applied and Clinical Sociology (AACCS) and public sociology is more about who is the audience for the sociological analysis.

Interested in becoming an applied sociology major? See your advisor

Sociologists of Minnesota

Present a poster, network with other sociologists, learn more....

2011 SOM Conference:

Dates: Thursday-Friday,

October 13-14, 2011

Theme: Religious Changes in a Volatile World

Location: Hindu Temple of

Minnesota , Maple Grove, MN

<http://socmn.org/wp-content/uploads/2010/08/SOM-2011-Conf-Poster-Fast-Facts1.pdf>

From their website:

SOM has traditionally served sociologists in academic institutions, applied sociologists, and undergraduate and graduate sociology students. SOM membership is open to anyone who supports the purposes of the organization, however, and we are specifically seeking to expand our membership base among high school sociology teachers and among sociology graduates working in human services, community development, criminal justice, and other fields of employment. Members receive voting privileges, a subscription to SOCIOGRAPH, opportunities to participate in the annual conference, and invitations to special events. <http://socmn.org/>

Student Paper Competition

Faulty and Students: Student Paper Competition, Fall 2011

The Caroline Rose Student Paper Competition is a great opportunity for students to compete and present their work. SOM is again offering three prizes in the undergraduate division. All entrants receive free conference registration, meals, and membership in SOM.

Faculty, we encourage you to invite your students to enter their papers in recognition of their outstanding work under your guidance.

Students, we welcome you to submit one or more papers. Three prizes are offered and you have a good chance of receiving a prize. Such a prize looks good on your resume, graduate school application, and recognizes your outstanding engagement as a student sociologist.

Rules of the Competition

located at http://socmn.org/?page_id=77 (although this is last years rules, they are the same except for the dates, location, and contact person, which are correct here).

Please submit an electronic version of the paper to Dr. Aurea K. Osgood (Winona State University) at aosgood@winona.edu by Friday, September 2, 2011. Please contact Dr. Osgood with any questions.

Why Be Applied?

There are many reasons to choose the applied sociology major:

1. An emphasis on research methods to develop the tools to solve social problems in the field.
2. An emphasis on solving social problems, directed by sociological theories.
3. Hands-on experiences built into the requirements.
4. Accredited program
5. Develop a group identity with fellow applied sociologists on practicing sociology in our day-to-day lives and career choices.

To find out more about applied sociology, check out the following sites:

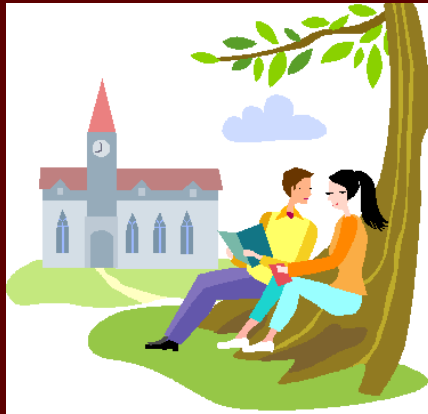
Association for Applied and Clinical Sociology [http://
appliedsociology.wordpress.com/](http://appliedsociology.wordpress.com/)

American Sociological Association's Sociological Practice and Public Sociology Section [http://www.asanet.org/sections/
SPPS.cfm](http://www.asanet.org/sections/SPPS.cfm)

ASA's undergraduate information [http://
www.asanet.org/students/
resources_majors.cfm](http://www.asanet.org/students/resources_majors.cfm)

Taking charge of your own learning is a part of taking charge of your life, which is the sine qua non in becoming an integrated person.

~Warren G. Bennis



Save the Dates

August 31: SOC Club Organizing Meeting (students organized for change): NOON Sociology Conference Room 262C

October 13-14 SOM Meetings

October 26: Open House Meet with Faculty & Internship Meeting 2 p.m. Room TBA

December 7: End of Semester Celebration with Faculty & Students 2 p.m. Room TBA

What is Applied?

"Applied sociology is one of the more than a dozen fields within sociology. Applied sociology is what has been deemed the "practical side" of sociology. That's because applied sociology takes sociological theories and research and applies this knowledge to sociological methods which are carried out in order to find solutions to problems within society. This use of sociological theories and methods is called sociological practice. "

<http://www.appliedsoc.org/applied-sociology/>

When Should I Apply for My Major?

Ideally, as soon as you know you want to be a major. There are many benefits to early identification:

1. We get you on our lists to send out meeting notices, internship opportunities, scholarships, etc.
2. You get an advisor in the major early on who can help you plan your course load.
3. It helps us plan to offer enough classes to meet demand and argue for full-time faculty to support our major.

Choosing an Advisor

Q: How do I choose an Advisor?

A: There are many ways. You can ask someone who you have taken a class with, you can ask someone with similar interests, or you can go to the office and have them refer you to someone who is available.

Q: What if I don't like the advisor I currently have or that person is not here?

A: Go to the sociology office and fill out a change of advisor form. It is that easy.

Q: What makes a good advisor?

A: Someone who responds to your emails promptly, someone who takes the time to listen to your concerns and guide you, but also, one who helps you connect with other people who can answer your question when they cannot!



Submission Guidelines

To submit an article, email Dr. Scheel at edscheel@stcloudstate.edu

Newsletter is to assist students and faculty in developing an identity as applied sociologists and keeping up to date with programmatic changes, updates, events, and people.

Next Issue: Focus on Faculty & Students of the Program. If you are an applied sociology student, please send me information I can include about you.

ISSUE 01 August 2011

Building a Resume

Get involved in student organizations

Choose student organizations, such as Students Organized for Change, that help you get involved in the community and practice your leadership skills. Don't just be a passive attendee, shape the program !

Choose Classes with Service Learning

Select classes with applied projects that help you practice your methodological, organizational, project planning, leadership, and other resume building skills.

Do An Internship

Select an internship to help you get experience in the field. See your advisor for packet of how to get started on an internship, attend the internship meetings, or meet with the internship director, Dr. Scheel .

Start an Electronic Portfolio

Choose efolio or google portfolios to keep track of your projects, classes, and other extra curricular activities that will help you form an identity as an applied sociologist. Add to it each semester.

Prepared by Dr. Elizabeth Scheel

Applied Sociology Director

289 Stewart Hall
edscheel@stcloudstate.edu