



We cannot live only for ourselves a thousand fibers connect us with our fellow men
-Herman Merlville.

Inside This Issue

Take a look at summer and fall course schedules
...Page 2
The St.Cloudstate community garden and A shocking story from a graduate student ...Page 3
Check out upcoming events on campus...page...4

Interested in the SR program?
EB-A139 or EB-118
St. Cloud State University
720 Fourth Avenue South
St. Cloud, Minnesota 56301
(320) 308-3124

Contact Us!
Dr. Julie Andrzejewski
Co-Coordinator
jrandrzejewski@stcloudstate.edu

Dr. Jiping Zuo
Co-Coordinator
jzuo@stcloudstate.edu

Still Fighting After All These Years: The Lack of Discourse on Gender Inequality

Some new and returning students who arrived on the St. Cloud State University campus this spring may have been shocked or surprised if they peered into the events section of the university website. This year, the Women's Center is commemorating the thirty year anniversary of the 1977 National Women's Conference in Houston, TX through their annual "Women on Wednesday" program. While focusing on the advancements that have been made during the past three decades, there is also focus on how far the fight for equality for women in society still needs to go.

Jane Olsen, director of the Women's Center, believes that this could be in large part the result of a false belief that women's equality has already been achieved. When asked about this issue in particular, Jane Olsen noted that issues such as eating disorders and sexual harassment have become so ingrained in our society that often people do not stop to question the behavior or examine its etiology. But when we begin to trace back the roots of this behavior, one cannot help but point to an environment where negative messages and language against women are rampant. To be truly socially conscious, there needs to be a collective effort to raise awareness that oppression based on gender exists and there is a movement still fighting after

all these years.

What can Social Responsibility students do to raise awareness or fight gender inequality on our campus and in the community?

*** We can become involved in one of the student organizations that are focused on women's issues. There are four organizations housed at the SCSU Women's Center.

*** We can be a mentor and provide leadership to undergraduate students who are interested in feminism and gender related issues.

*** Seek employment or volunteer at one of the many organizations in the community that provides services to women.

*** Educate yourself! Read more about gender inequality, attend programming held on campus such as "Women on Wednesday", and ask questions from those engaged in the struggle.

Women on Wednesday

Excellence in Leadership Award Receptient: Godfrey Mnubi



Godfrey Mnubi graduated from St. Cloud State University in the social responsibility program in May 2007. He was among the 20 students selected to receive the Excellence in Leadership Award for the academic year 2008.

Congratulations to Spring 2008 Social Responsibility Graduates!

Cari Binsfeld
Lucille Guinta-Bates
Lisa Holtan
Neema Jangu
Chrispina Lekule
Maren Greathouse
Nicole Schroeder
Pam Boehnke



Congratulations to you!

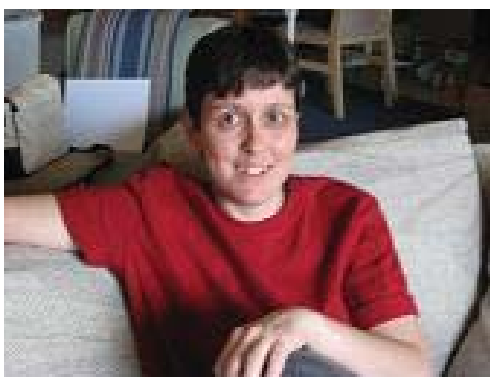
Social Responsibility Program Course Offering for Full Summer Session: June 09-July 11 2008

Course No.	Sec.	Course Title	Instructor	Days	Time	Credit
Soc 562	01	Sociology of the body	Scheel-Keita	Online		3
Hurl 507	01	Indians/Contemp Hum Right	Lacourt	MW	2p.m. -5:50p.m.	3
Hurl 591	01	Change Agent Skill	Hofmann	MTWR	10a.m. -12:30p.m.	3
Hurl 592	01	Practicum Soc. Empowerment	Hofmann	MTWR	12:30p.m. -1:10p.m.	1
Hurl 681	01	Teaching Social Justice	Slisli	TW	12:30p.m. -4:15p.m.	3
WS 506	01	Sexual Assault Adv Trng	Lindner	MW	12:30p.m. -4:30p.m.	3
Hurl 507	01	American Indian Studies	Lacourt	M/W	2:p.m. -5:50	3

Social Responsibility Program Course Offering for Fall 2008

Course No.	Sec.	Course Title	Instructor	Days	Time	Credit
Soc 512	01	Self and Society	Greider	TR	2p.m. -3:15p.m.	3
Soc 556	01	Complex Organizations	Mehdi	R	5p.m. -7:45p.m.	3
Soc 562	01	Global Nature: society & Env..	Slocum	TR	3:30p.m. -4:45p.m.	3
Soc 562	02	Sociology of Religion	Philion	MW	3p.m. -4:15p.m.	3
Soc 582	01	Soc. & Global Politics of food	Ore	M	5p.m. -7:40p.m.	3
Soc 684	01	Sociology of Social Respons.	Zuo	T	6p.m. -8:40p.m.	3
Soc 685	01	Sociological Theory	Philion	W	5p.m. -7:40p.m.	3
Hurl 502	01	Elective current issues	Staff	W	5p.m -7:40p.m.	3
Hurl 512	01	Disability rights	Staff	TR	3:30p.m. -4:45p.m.	3
Hurl 518	01	Xenophobia	Tademe	T	5:30p.m. -8:10p.m.	3
Hurl 591	01	Change Agent Skill	Tademe	MW	5p.m. -7:40p.m.	3
Hurl 592	02	Pract. in Social Empowe	Tademe	MW	7:40p.m. -8:30p.m.	1
WS 505	01	Women of Color in US	Mumbi	T	5p.m. - 7:40p.m.	3

Seductive Indifference: Housing Affordability Mismeasurement Graduate Thesis By Nikki Knisley, M.S.



“Affordable housing” is a phrase that has come to mean so many different things that it can convey misinformation depending upon the context in which it is used. All housing is affordable to

someone, but not everyone can afford housing. The intended purposes of this project were to 1) differentiate between the concepts of “affordable housing” and “low-income housing” with regard to rental housing in St. Cloud; 2) to determine if there is a shortage of low-income rental housing in St. Cloud.

This project utilized Basic Family Budgets, developed by the

Economic Policy Institute to determine the hourly wage one and two parent families with one, two, or three children would need to obtain and maintain adequate, safe rental housing in St. Cloud. Additionally, eight interviews were conducted with 14 service professionals working in the St. Cloud area to gain insight regarding the rental housing market facing low-income families.

The Basic Family Budget data revealed that the hourly wages needed by families in the St. Cloud area to secure rental housing is far higher than the hourly wages that dominate the local economy. Service professionals echoed this sentiment, stating that low-income families live precariously; vulnerable to changes such as rising gasoline prices, and that the St. Cloud area does have a shortage of available low-income rental housing, especially two and three bedroom units.

Further research is needed to investigate several issues raised by this project, including the possibility of racial discrimination, barriers faced by people who have been convicted of felonies, and the difficulty of obtaining a rental deposit and first month’s rent (in some situations, first and last month’s rent).

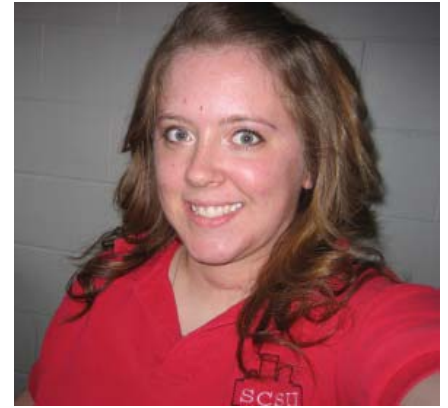


A Shocking Story from Serafina Scholl

Since completing my Social Responsibility Degree in October 2005, I have been very busy and still reside in the St. Cloud area. I am currently the Assistant Residence Hall Director of the girl's dorm at St. John's Preparatory School in Collegville, MN. I live with thirty-five High School girls from all over the world!

It is a great multicultural learning and living experience. We have students from Korea, China, Mexico, Thailand, Taiwan and more! We provide the students with educational programming and have taken them volunteering to the Place of Hope in St. Cloud and on trips to Gooseberry Falls and hiking at Itasca State Park! It is a lot of fun, challenging and rewarding! Even more challenging has been

my diagnosis of Stage 2 Breast Cancer in May 2007 at the age of 27. It was definitely a surprise but it has allowed me to look at things differently in life and light my fire about making the world a more socially responsible. A place in which we look to find solutions and to always, always keep asking why and why not. My last treatment will be October 31st, 2008 Halloween, and I will most definitely be celebrating in style!



Growing Community: The St. Cloud State University Community Garden: By Tracy E. Ore, Associate Professor, Department of Sociology

As a sociologist interested in the community as well as the politics of food, I have long been interested in food sustainability and food security and have inquired into the roles that both play in fostering and supporting community growth. Since moving to Saint Cloud in the summer of 1998 I had found the project of growing community to be one of the area's greatest challenges, and had wondered how addressing it could be facilitated by food.



For several years I traveled with students to Detroit, Michigan to work with a youth program called Detroit Summer. Inspired by the model of Freedom Summer, Detroit Summer is a program that invites inner-city high school and college students to join visiting youths from around the country during a four-week period to work together in urban community gardening, among other things. A modest and low-budget program, Detroit Summer provided me with valuable lessons of how small green spaces could be centers for not only growing food but growing community.

In the Fall of 2004, I approached members of the University administration with the idea of establishing a community garden. To my surprise, I received enthusiastic support, and soon was on my way to a workshop in Toronto on how to establish a community garden. I returned with ideas that I shared in my "Sociology and the Global Politics of Food" course and others on campus, and the enthusiasm for the project grew. In the Spring of

2005, several of us came together to develop a plan for establishing a community garden at SCSU with the intention of creating a beautiful green space for all members of the community to enjoy planning, planting, tending and harvesting together.

The SCSU Community Garden, now having just completed its third season, is located on Fifth Avenue South next to the SCSU Women's Center. The garden represents an effort by SCSU faculty members, staff, students and St. Cloud community members to build bridges between the university and the larger community. Furthermore, this project is intended to educate and expand knowledge about sustainable agriculture, gardening processes, food preparation, natural environments, and organic practices. In addition, the space of the garden is intended to build community within and between various groups in Saint Cloud so that dialogues can occur around solutions to community problems with regard to race, class, gender and sexuality.

For over the past 10 years, the space where the garden now grows was a barren dirt lot, used primarily in the winter as a place to dump surplus snow. Anyone who passes by the lot today can see how the space has been transformed. The soil is now rich with organic matter and the space is a thriving locale supporting not only the growth of many plant varieties (and several families of bunnies) but also the growing of community. Over the past three seasons the garden has organically produced many varieties of plants, from heirloom tomatoes to Yukon Gold potatoes; from yellow cucumbers to zucchini in amazing numbers. This year we even planted two varieties of blueberries to complement our ever-growing hedge of heirloom raspberries. In addition to the food, the site has been the location of wonderful conversations not only as we worked to tend the garden but also at the bi-weekly cookouts, open houses, and other gatherings.

While the garden is now put to bed for the winter, it is my hope that what it represents continues to grow over the next several years. As students and faculty in SCSU's Masters in Social Responsibility Program, I believe we have an obligation to look at how we can foster the growth of community in our area so that we can come together and support each other as we work to build a more socially just space in which we can all thrive. For more information about SCSU's community garden go to: <http://web.stcloudstate.edu/teore/Garden/Homepage.html>

ST. CLOUD STATE UNIVERSITY
MASTER OF SCIENCE IN SOCIAL RESPONSIBILITY
EBB 118/SH 262
720 FOURTH AVENUE SOUTH
ST. CLOUD, MN 56301-4498

NON-PROFIT ORG
U.S. POSTAGE
PAID
St. Cloud, Minn.
Permit No. 460

Upcoming events

For more information, please call (320) 308-2113

*** Women Unplugged: Awake Your Power

Wednesdays from noon to 1:00pm in Atwood
Theater. Atwood Memorial Center

*** April 9: The Role of Woman in Building a Healthy Economy.
Presenter: Tene Wells

The President should issue an Executive Order establishing as
national policy the full integration of women entrepreneurs in
government-wide business-rated, and procurement activities.

*** April 16: Status Report: Women Growing Older.

Presenters: Dr. Phyllis Greenberg and Dr. Rona J. Karasik, PhD.
The federal and state governments, public and private women's
organizations and social welfare groups should support efforts
to provide social and health services that will enable the older
women to live with dignity and security.

*** April 23: Activism and social change in the anti-sexual as-
sault movement. Presenter: Dresden Quinn Jones. Local task
forces to review and reform rape law and practices of police,
prosecutors, and medical personnel should be established. Such
task forces should also mobilize public support for change.
Rape crisis centers should be established for the support of
victims, and confidentiality.

*** April 3, 17 & May 1

Women That Rock: Every other Thursday from 7:00-9:00pm

For more information contact Outdoor Endeavors at
320-308-3772

Voicings 2008

New courses to be offered 2008/2009 but not yet included in the University Catalogue or in the blue form yet.

*** Soc 567: Sociology of Religion

*** Soc 582: Sociology and Global Politics of Food

*** Soc 593: Gender, Space and Society: Global Perspectives

*** Soc 562: Global Nature Society & Environment

*** Soc 562: China and Globalization