

# THE TAPESTRY

October 2011

## The Tapestry

The United States is a diverse country. Rather than being a melting pot where assimilation destroys diversity and uniqueness, the US is like a tapestry. "A tapestry is a hand-woven textile. When examined from the back, it may simply appear to be a motley group of threads. But when reversed, the threads work together to depict a picture of structure and beauty" (Sandra Nieto, 2006). We are those threads and the diversity we each bring makes the tapestry, this country, what it is.

## OCTOBER UPDATE

Hi, my name is Hannah and I'm the social justice and diversity advocate for ResLife. I'm a second year Community Advisor and a senior in the Women's Studies Program. My minors are Ethnic Studies and German. I'm excited to be an advocate because this position can make more welcoming and inclusive communities for our residents! You can contact me for anything at my e-mail: daha0801 or my room phone: 8-4583. My name is Zeqing "Lulu" Lu. I am a social justice advocate and a community advisor in Lawrence hall. I am a senior and majoring in mathematical economics. I believe social justice and economics are related. I will serve as a resource to help building a socially just community! Contact information: luze0801@stcloudstate.edu, 320-308-1220.



**Hannah Daniels**

Email: [daha0801@stcloudstate.edu](mailto:daha0801@stcloudstate.edu)

Phone: 320.308.4583

**Zeqing Lu**

Email: [luze0801@stcloudstate.edu](mailto:luze0801@stcloudstate.edu)

Phone: 320.308.1220



## Forward

St. Cloud State is a diverse university. Respecting the variety of identity in the community through actions, words, and behaviors is essential in building a socially just community. For college students, understanding differences turns to be challengeable. Having your own opinion and not thoroughly understanding the diverse behaviors are acceptable. Nonetheless, you should pay great respect to the diverse members, and treat others equally without prejudice.

If someone is offended by the behaviors of others, we are here to help and speak up if necessary. Charity is provided as well. In addition, justice focuses on social change, and charity focuses on social services. In the words of Pius XI, "Charity will never be true charity unless it takes justice into account ... Let no one attempt with small gifts of charity to exempt himself from the great duties imposed by justice".

## Social Justice and Diversity Committee

The Social Justice and Diversity Committee is a programming group through ResLife and will plan events for the residents and students of St. Cloud State University throughout the 2011-2012 school year. Although LuLu and Hannah are going to be running the meetings the programs rely on the input of the members of the committees. The first meeting was September 12th at 2pm in the Mitchell Hall Lounge! The meetings are open to anyone who is interested and has an agenda of planning when the weekly meetings will be, introducing the Social Justice and Diversity Retrea, and beginning to plan out the rest of the year together! The Social Justice and Diversity retreat will be on Sunday, September 18th. It will start at one in the afternoon and end at about five which the members will go to Garvey Commons together to eat dinner! After the retreat the participants will understand the terms social justice and diversity and be able to be competent advocates around those issues. If these dates do not work for you and you want to be involved, please let Hannah or Lulu know and we will make sure to keep you updated!



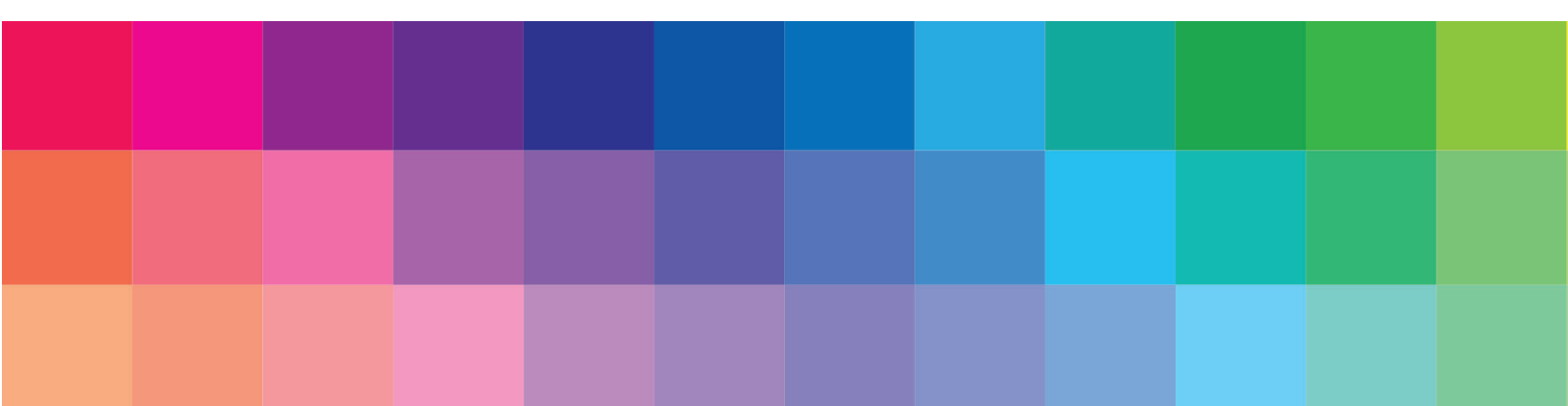


## Lance Pemberton

Lance Pemberton is the Pride Community Community Advisor in Benton Hall. He states that he wants the Pride community to be a safe environment for GLBTQA students and that it would be an active, fun place to live. His personal plans for the community include an "It gets better" video made by his residents and other St. Cloud community members and having his residents be involved in St. Cloud pride events. Any Community Advisor can contact Lance on bulletin board ideas surrounding LGBT issues or help plan events that educate students on LGBT issues. He also wants to remind Community Advisors to sign up for the safe space door stickers that Heidi Aldes discussed during Fall training!

## The Pride Community

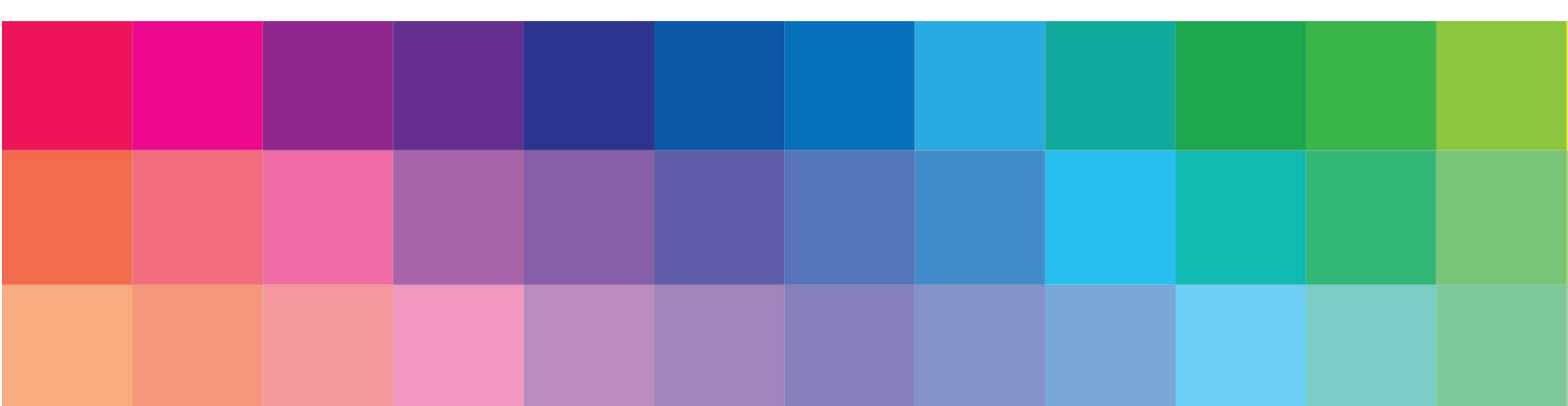
SCSU Residential Life is very unique in the fact that it has an all-gender housing option for incoming and returning undergraduate students! It is for students that identify as lesbian, gay, bisexual, transgender, gender-queer, intersex, gender-variant, questioning, anyone that does not fit the gender binary and their allies! It is a dynamic living environment and residents are asked to sign a community agreement that discusses their expectations for living in such an environment! It offers an opportunity to live in a safe place with roommates of the same, opposite or other genders!





# Multicultural Student Services

Multicultural Students Services is a resource for students of color who need assistance with financial aid concerns, housing, tutoring, social-cultural issues, and academic support. The role of the office is to create and maintain an environment that promotes cultural understanding and appreciation for all members of the university community. MSS provide several programs that help students succeed.

- Athletes for Success in the Classroom: Providing academic support and a positive learning environment for student athletes.
  - Advising: Students have access to an academic advisor who is housed in MASC.
  - Mentoring Program: Provides students with useful information so they can make informed decisions about their social life and personal choices.
  - Tutoring Program: Provides students of color with on-site tutoring in conjunction with SCSU's Academic Learning Center.
  - Advanced Preparation Program (APP): A summer scholarship program open to incoming first year students who have been admitted to SCSU. Students are enrolled in college classes, attend informational seminars and get the experience of college life.
- 

# Event Calendar October

## Event Calendar October

This list of events is by no means complete, keep an eye out for other events on campus. For more information on specific vents visit the campus event calendar at <http://www.stcloudstate.edu/events/default.asp>

## October Events

October 5th

4 to 5pm Historical Context for "a Part Time Indian"  
Atwood Voyageurs Presenter Dr. Rob Galler, History Department

Description: Based on the common reading program book "The Absolutely True Diary of a Part-Time Indian", Dr. Galler discusses the historical context that brought Arnold Spirit, Jr. and his surrounding characters in to their reservation. Since all first year students have to read this book, some may be interested to attend this event!

October 22th

Dashain and Tihar Festival  
Nepalese Student Association, Atwood Ballroom

October 25th

7:30 to 9:00pm Lily Cai Chinese Dance Company  
Stewart Hall Ritsche Auditorium  
ancient Chinese dance meshed with modern dance-entertainment

October 29th

Sri Lanka Kitchen  
Atwood Ballroom

## Fixed weekly events

Wednesdays

"Women On Wednesday" is in Atwood theatre at 12pm.  
This semester's theme is technology!

Wednesdays

"Social Justice and Diversity Committee meetings" in Mitchell Lounge at 2pm!

Fridays

"Cultural Cafe" in Mitchell Lounge 2pm to 3pm.

## Commemorative days in October

October 5th

Waqf al Arafa (Islam)

October 6th

Dussehra (Hindu)

October 8th

Yom Kippur (Jewish)

October 9th

Birthday of Guru Ram Das (Sikh)

October 12th

Dia de Raza (Mexico)

October 20th

Birth of the Báb (Baha'i)

October 21th

Simchat Torch (Jewish)

October 26th

Diwali (Hindu, Jain, Sikh)

## National Hispanic Heritage Month

Starting on Thursday, September 15th begins another month nationally dedicated to Hispanic Heritage! This year's theme is "Many Backgrounds, Many Stories...One American Spirit". This tradition began in the United States under President Lyndon Johnson in 1968 originally as a weeklong dedication. President Ronald Reagan expanded the week to a month time ending on October 15th in 1988. September 15th is a very important date for many Latin American Countries including Costa Rica, El Salvador, Guatemala, Honduras and Nicaragua as it is their anniversary of independence. September 16th remains an important day for those of Mexican descent for their day of independence from Spain and September 18th is Chile's celebration of independence! Columbus day or Dia de la Raza also falls within this month period on October 12th! For more information, please go to the Library of Congress sponsored website: <http://hispanicheritagemoth.gov/>

## LGBT History Month

It is a month-long annual observance of lesbian, gay, bisexual and transgender history, and the history of the gay rights and related civil rights movements. It is observed during October in the United States, to include National Coming Out Day on October 11

## Disability Awareness Month

Held each October, National Disability Employment Awareness Month (NDEAM) is a national campaign that raises awareness about disability employment issues and celebrates the many and varied contributions of America's workers with disabilities.

## Domestic Violence Awareness Month

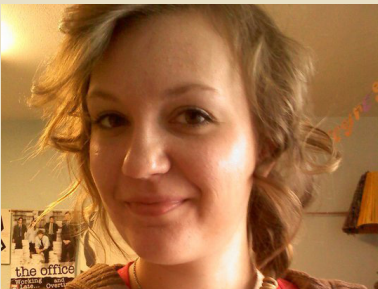
Domestic Violence Awareness Month (DVAM) evolved from the "Day of Unity" in October 1981 conceived by the National Coalition Against Domestic Violence. The intent was to connect advocates across the nation who were working to end violence against women and their children. The Day of Unity soon became an entire week devoted to a range of activities conducted at the local, state, and national levels.

# diecut digest

NEWSLETTER FOR COMMUNITY ADVISORS

OCTOBER 2011

Welcome!



Hello Community Advisors!  
Hope CA training went well and you've been able to catch up on sleep as the first weeks of classes are already rolling! This is the first Edition of the 2011-2012 Diecut Digest. You will be receiving one per month. Please open them and read as they will highlight upcoming events, and bring you programming, bulletin board, and door dec. ideas specific toward each month.

## office hours

RACHEL CROON  
MITCHELL HALL

W.W. Holes Hall  
Wednesday 3:00-5:00pm

email:  
crra0901@stcloudstate.edu

Feel free to contact me via Email or during my office hours with questions or ideas!

## OCTOBER ISSUE

In the last few weeks, the air has been cool, and the trees are starting to lose their color. The days are getting shorter and students are no longer in shock of being away from home for the first time. Yes, it is October, and midterm is right around the corner. This is a time when residents are beginning to feel homesickness, financial and academic pressures and seasonal depression should kick in any day now. This is a crucial time to reach out to residents, do some creative programming and do your best to help them succeed.

You are reading the first edition of the Die-Cut Digest this year. The Die-Cut is a newsletter giving you the latest info regarding your resource room. It is written by me, Rachel Croon, your resource room coordinator. My job is to keep the resource room well stocked with things to help you keep your floor looking sharp. I am here as a resource for programming, bulletin boards, door dec ideas and anything else that you might need! Basically, I'm here to help you be an awesome CA! Sometimes life gets so busy as a CA that it can be hard to come up with unique ideas for your floor. You can refer to the monthly Die-Cut Digest to get ideas and inspiration if you are running short on creativity or time.

---

## **Resource room updates**

The Holes resource room has been rearranged, cleaned and freshly decorated to better function for you. Remember to sort your scraps accordingly and to return return supplies to their homes.

## **Resource room in Shoe?**

Yes! Shoemaker has its very own resource room stocked with pretty much everything the holes resource room has, but different die cut shapes! Check it out!

## **Bulletin boards:**

Take a picture of your best bulletin board and send it to me at [crra0901@stcloudstate.edu](mailto:crra0901@stcloudstate.edu). I will post my favorite in next month's Die-Cut Digest!

## **Wall of Fame:**

Post your door decs on the wall of fame in the Holes resource room to show off your work and inspire your fellow CA's!

## **Door Dec Tip:**

Short on time? Lacking creativity? Find a cheap dec of cards related to the current season or holiday. Slap some tape on the number side and stick it to the door. Bam! Instant door dec!

---

## Whats your story?

Did you have a hit program? Are your residents raving about a bulletin board or floor event? I want to know! Submit your story to the Die-Cut Digest, including bulletin boards, door decs, floor events or any sort of tips or tricks! I want to know what you are doing in your community! Send me an Email at [crra0901@stcloudstate.edu](mailto:crra0901@stcloudstate.edu)! You could be featured in next month's issue!