



# Emergency Evacuation Route Map

## IN CASE OF FIRE:

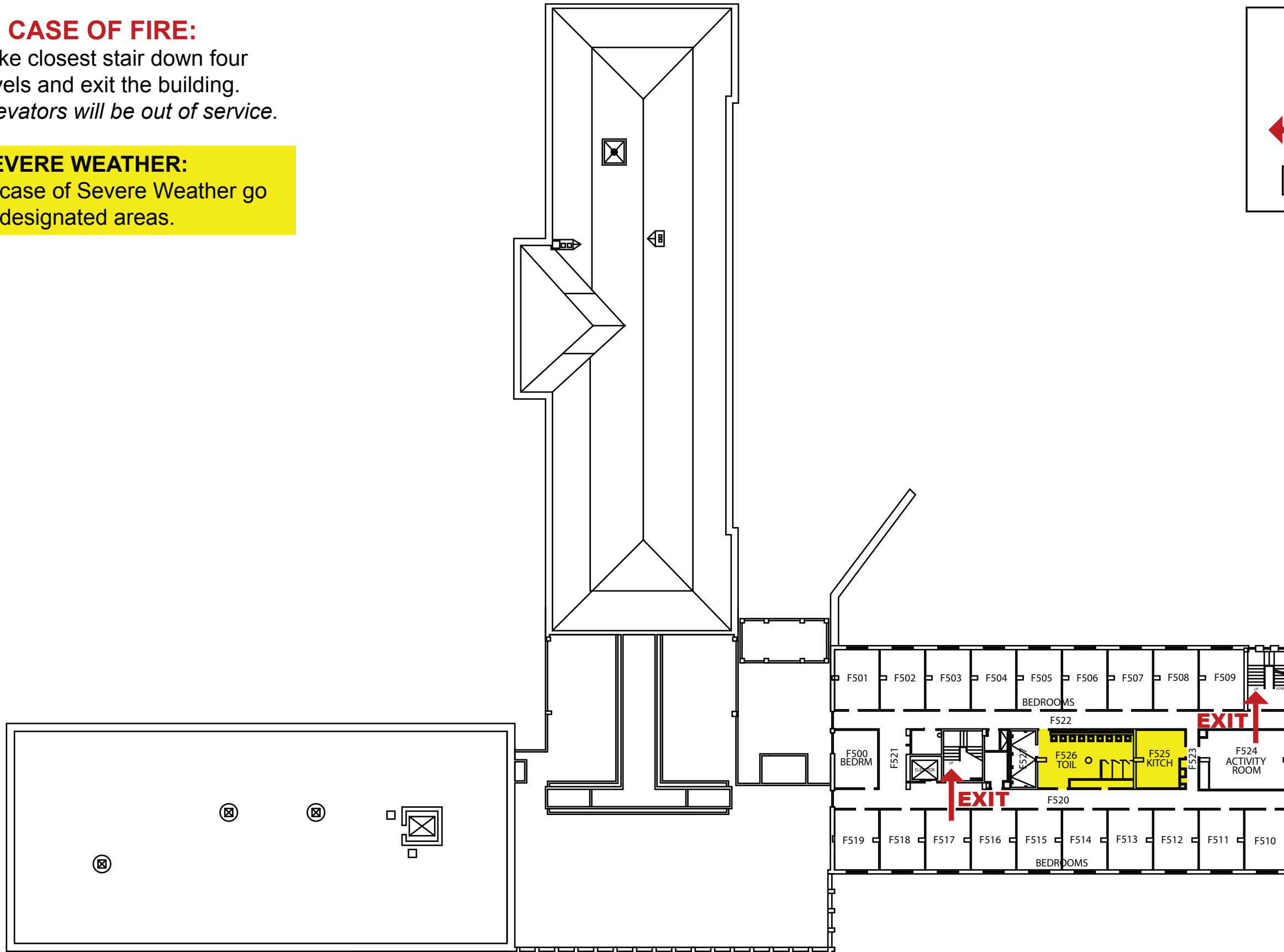
Take closest stair down four levels and exit the building.  
*Elevators will be out of service.*

## SEVERE WEATHER:

In case of Severe Weather go to designated areas.

**KEY**

- You Are Here
- Fire Exit Route
- Severe Weather Shelter Route



SHOEMAKER HALL - 5th Floor