



# Emergency Evacuation Route Map

## IN CASE OF FIRE:

Take closest stair down two levels and exit the building.  
*Elevators will be out of service.*

## SEVERE WEATHER:

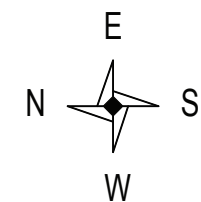
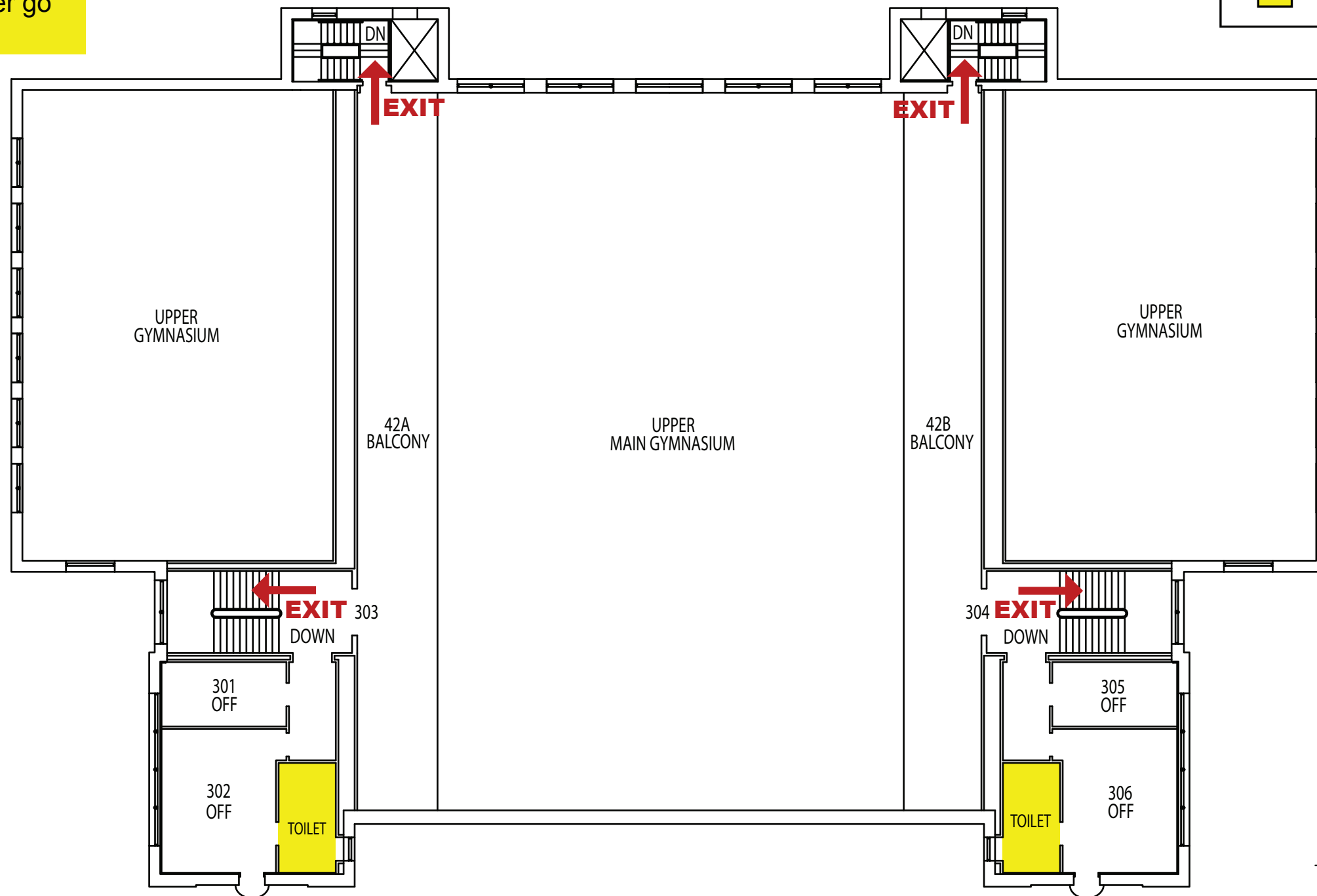
In case of Severe Weather go to designated areas

## KEY

You Are Here

← Fire Exit Route

■ Severe Weather Shelter Route



EASTMAN - 3rd Floor