



Emergency Evacuation Route Map

IN CASE OF FIRE:

Take closest stair down one level and exit the building.
Elevators will be out of service.

SEVERE WEATHER:

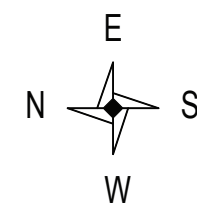
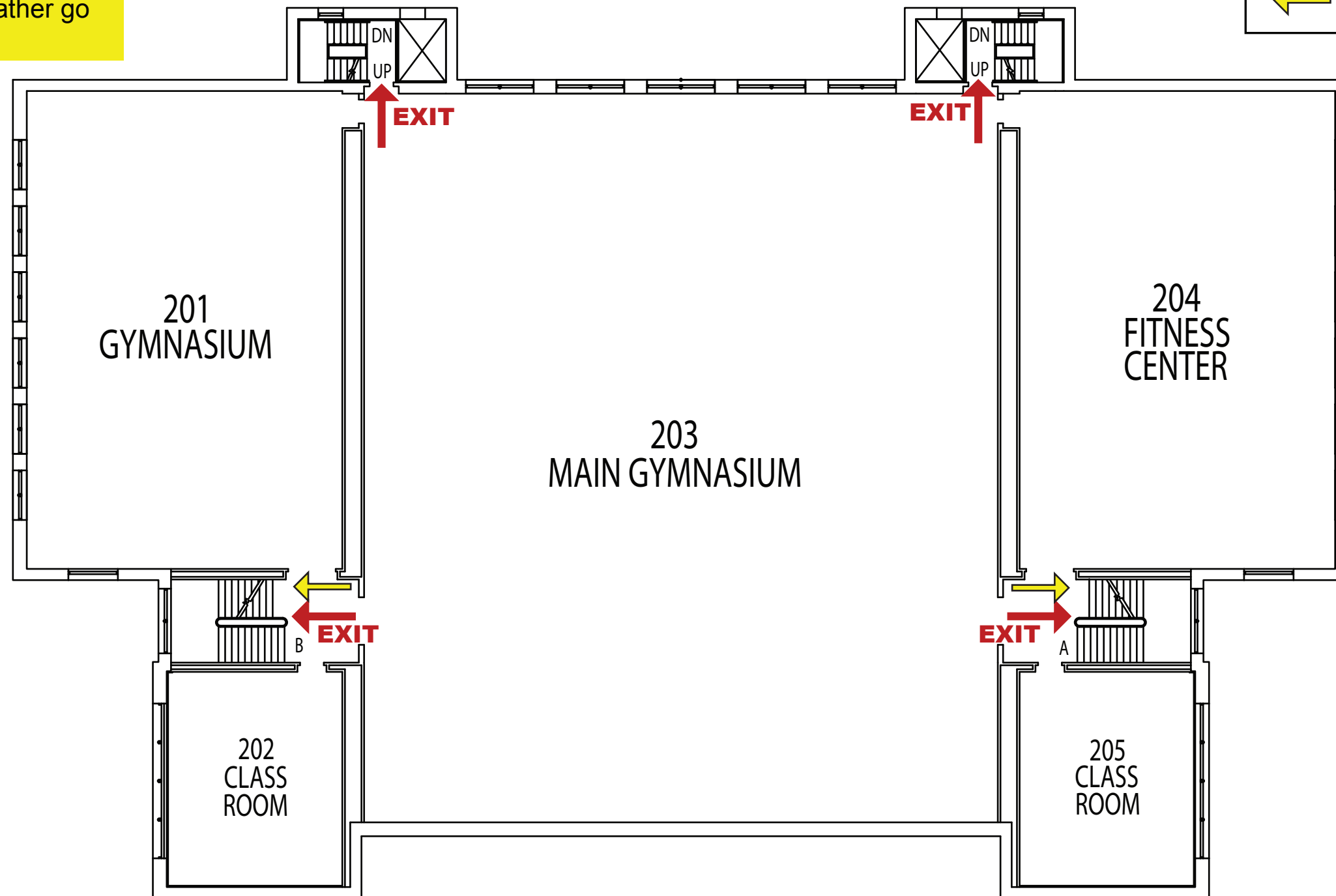
In case of Severe Weather go to designated areas.

KEY

You Are Here

← Fire Exit Route

← Severe Weather Shelter Route



EASTMAN - 2nd Floor