



# Emergency Evacuation Route Map

## IN CASE OF FIRE:

Take closest stair down one level and exit the building.  
*Elevators will be out of service.*

## SEVERE WEATHER:

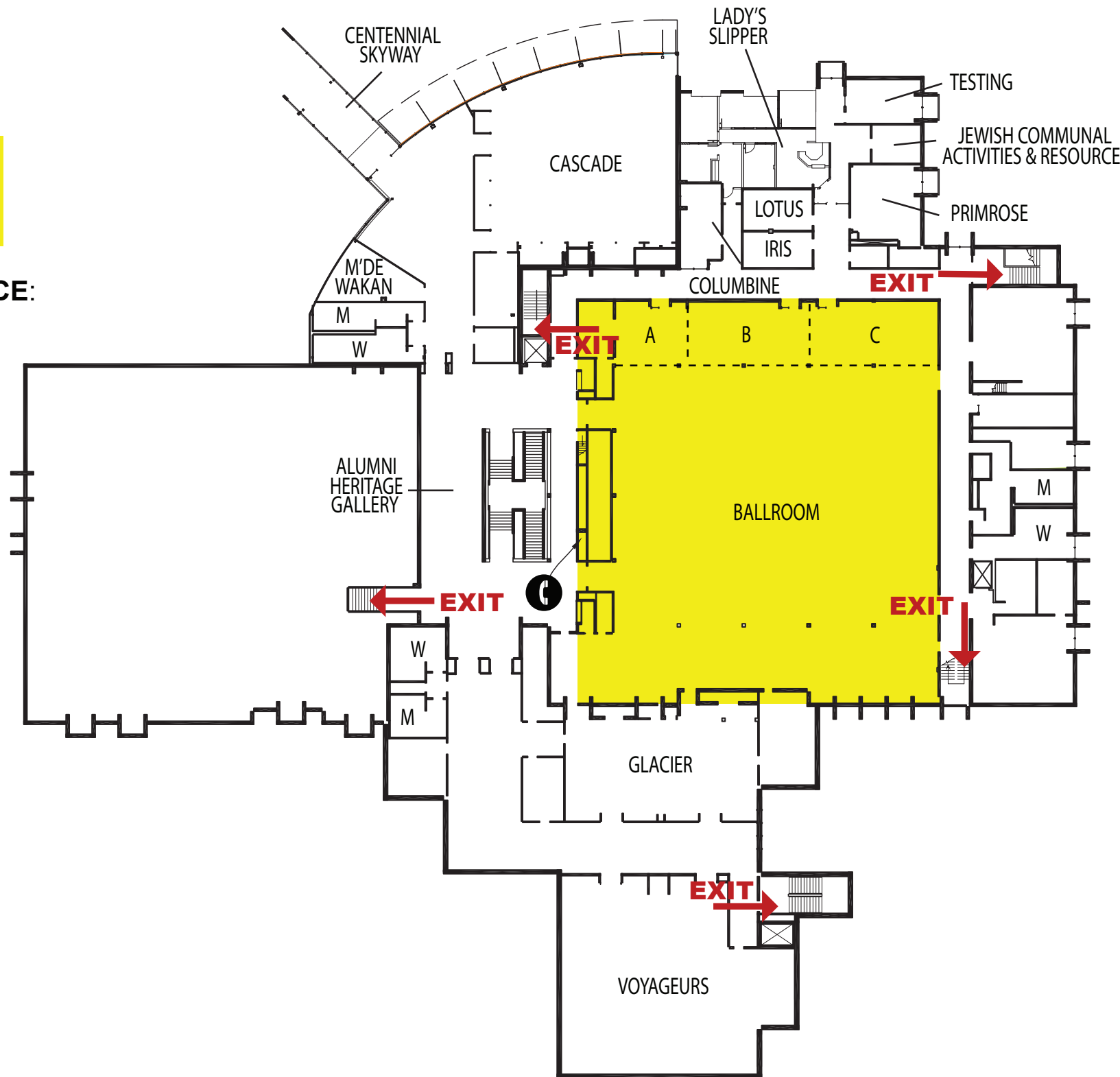
In case of Severe Weather go to designated areas.

## FOR EMERGENCY ASSISTANCE:

**8:00a.m. - 4:00p.m. Monday-Friday**  
Go to the administration offices in Room 110 or call 4636 from any campus phone.

**4:30p.m. - 12:00 Midnight Weekdays, and all day Weekends and Holidays**  
Go to the Information Desk on the main floor or call 4636 from any campus phone.

**If the Information Desk is Closed**  
Call the Public Safety Department at 255-3333 or 255-HELP (4357).



## KEY

You Are Here

← Fire Exit Route

■ Severe Weather Shelter Route