



# Emergency Evacuation Route Map

## IN CASE OF FIRE:

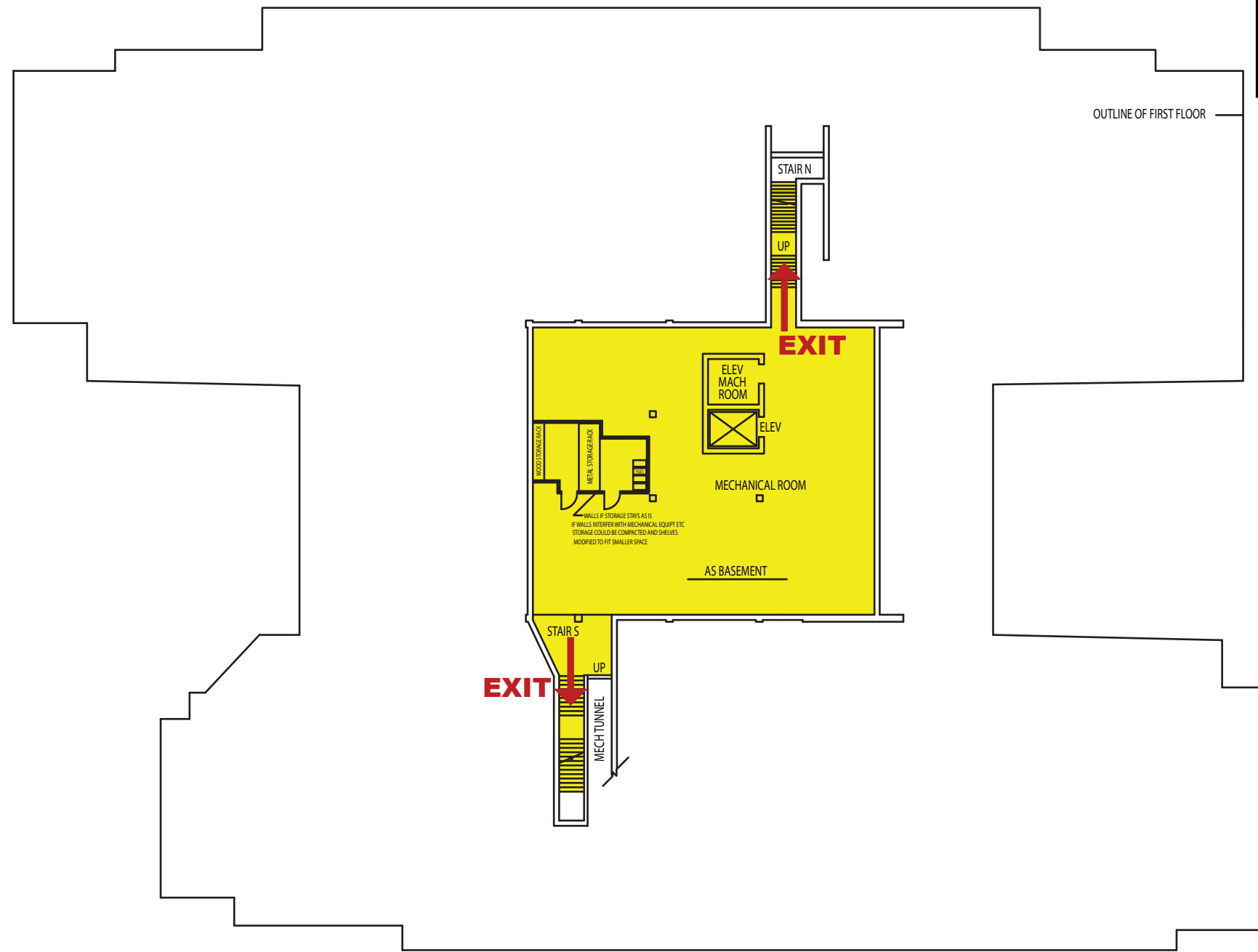
Take closest stair up one level and exit the building.  
*Elevators will be out of service.*

## SEVERE WEATHER:

In case of Severe Weather stay on basement level.

**KEY**

- You Are Here
- ← Fire Exit Route
- Severe Weather Shelter Route



ADMINISTRATIVE SERVICES BUILDING - Basement Floor