



# Emergency Evacuation Route Map

## IN CASE OF FIRE:

Proceed to closest exit door and exit the building.

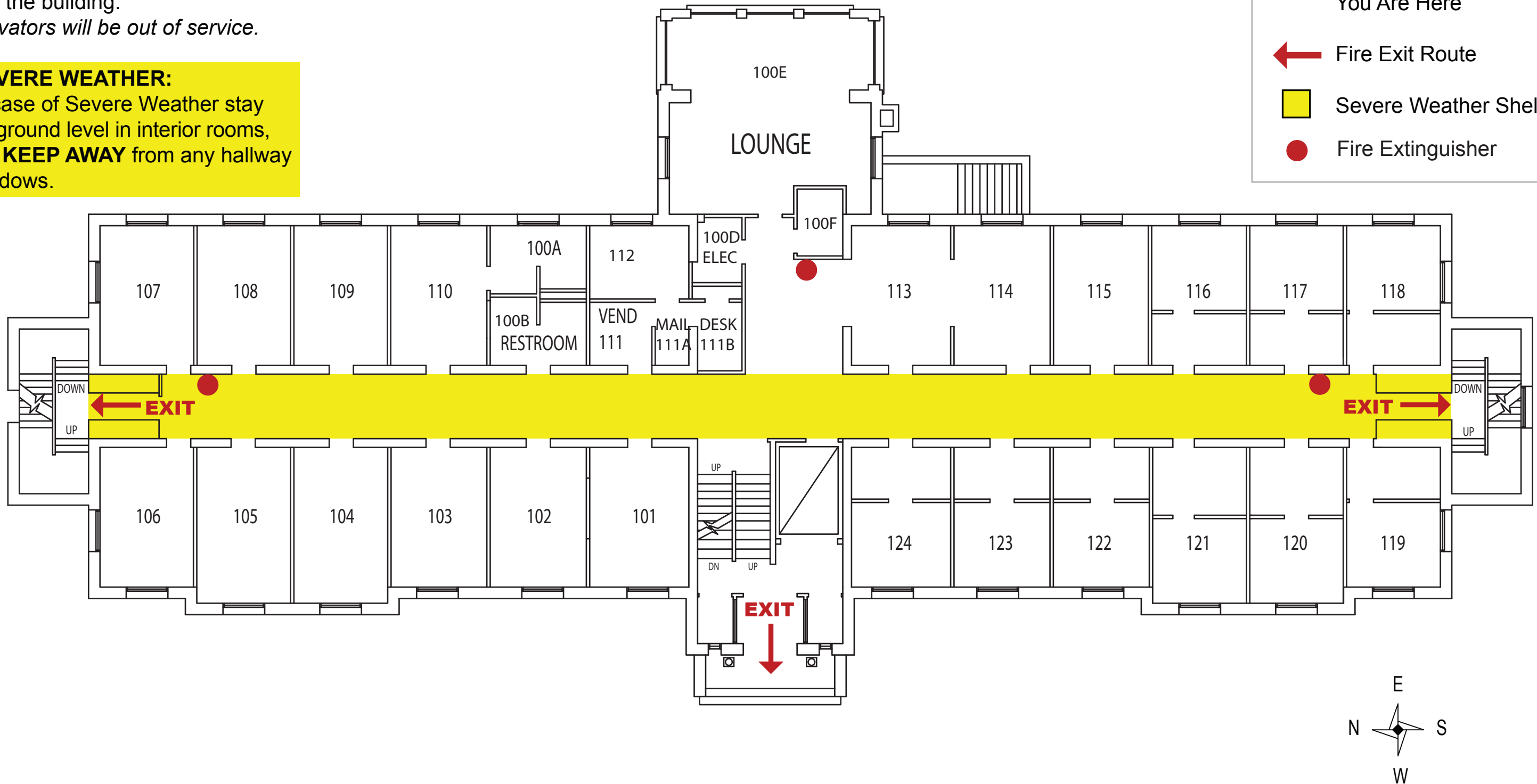
*Elevators will be out of service.*

## SEVERE WEATHER:

In case of Severe Weather stay on ground level in interior rooms, but **KEEP AWAY** from any hallway windows.

**KEY**

- You Are Here
- ← Fire Exit Route
- Severe Weather Shelter
- Fire Extinguisher



LAWRENCE HALL - 1st Floor