



Emergency Evacuation Route Map

IN CASE OF FIRE:

Proceed to closest exit door and exit the building.

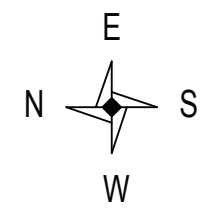
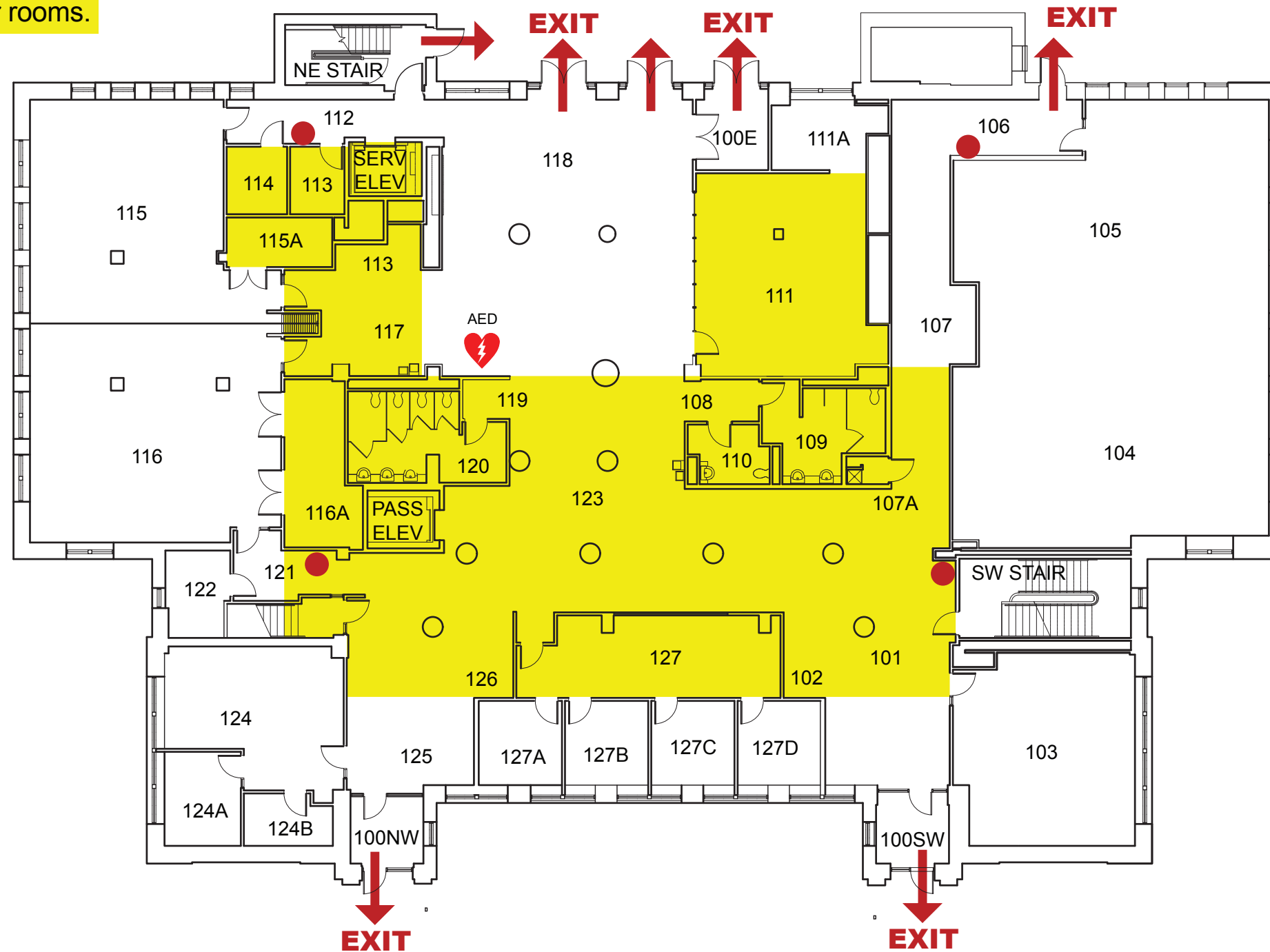
Elevators will be out of service.

SEVERE WEATHER:

In case of Severe Weather stay on ground level in interior rooms.

KEY

- You Are Here
- Fire Exit Route
- Severe Weather Shelter
- Fire Extinguisher
- AED Defibrillator



EASTMAN - 1st Floor

Updated 03_2023