



Emergency Evacuation Route Map

IN CASE OF FIRE:

Take closest stair down one level and exit the building.
Elevators will be out of service.

SEVERE WEATHER:

In case of Severe Weather proceed to basement level.

FOR EMERGENCY ASSISTANCE:

8:00a.m. - 4:00p.m. Monday-Friday

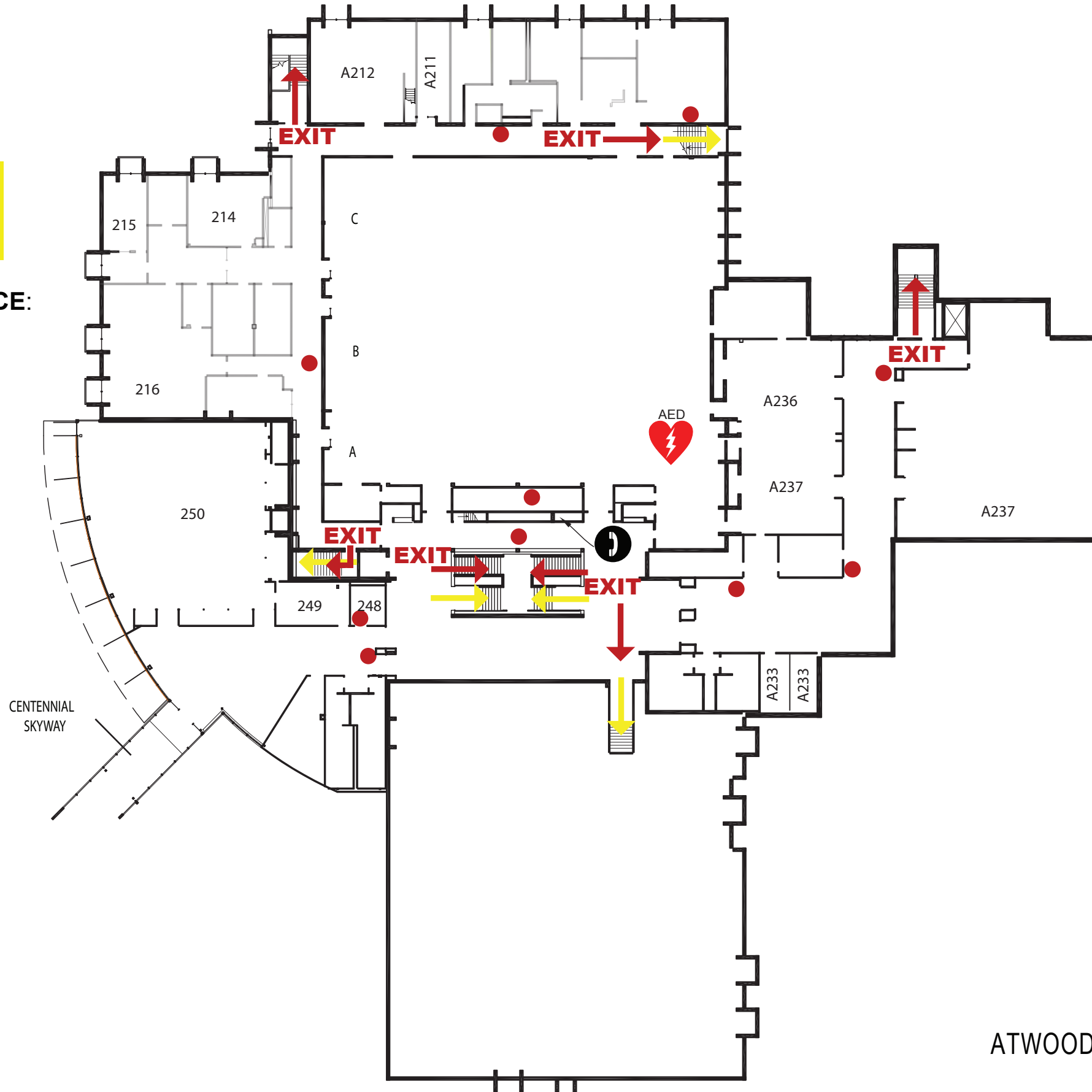
Go to the administration offices in Room 110 or call 4636 from any campus phone.

4:30p.m. - 12:00 Midnight Weekdays, and all day Weekends and Holidays

Go to the Information Desk on the main floor or call 4636 from any campus phone.

If the Information Desk is Closed

Call the Public Safety Department at 255-3333 or 255-HELP (4357).



KEY

You Are Here

← Fire Exit Route

← Severe Weather Shelter Route

● Fire Extinguisher

AED
Defibrillator

ATWOOD MEMORIAL CENTER - Upper Level