



Emergency Evacuation Route Map

IN CASE OF FIRE:

Proceed to closest exit door and exit the building.
Elevators will be out of service.

SEVERE WEATHER:

In case of Severe Weather proceed to basement level.

FOR EMERGENCY ASSISTANCE:

8:00a.m. - 4:00p.m. Monday-Friday

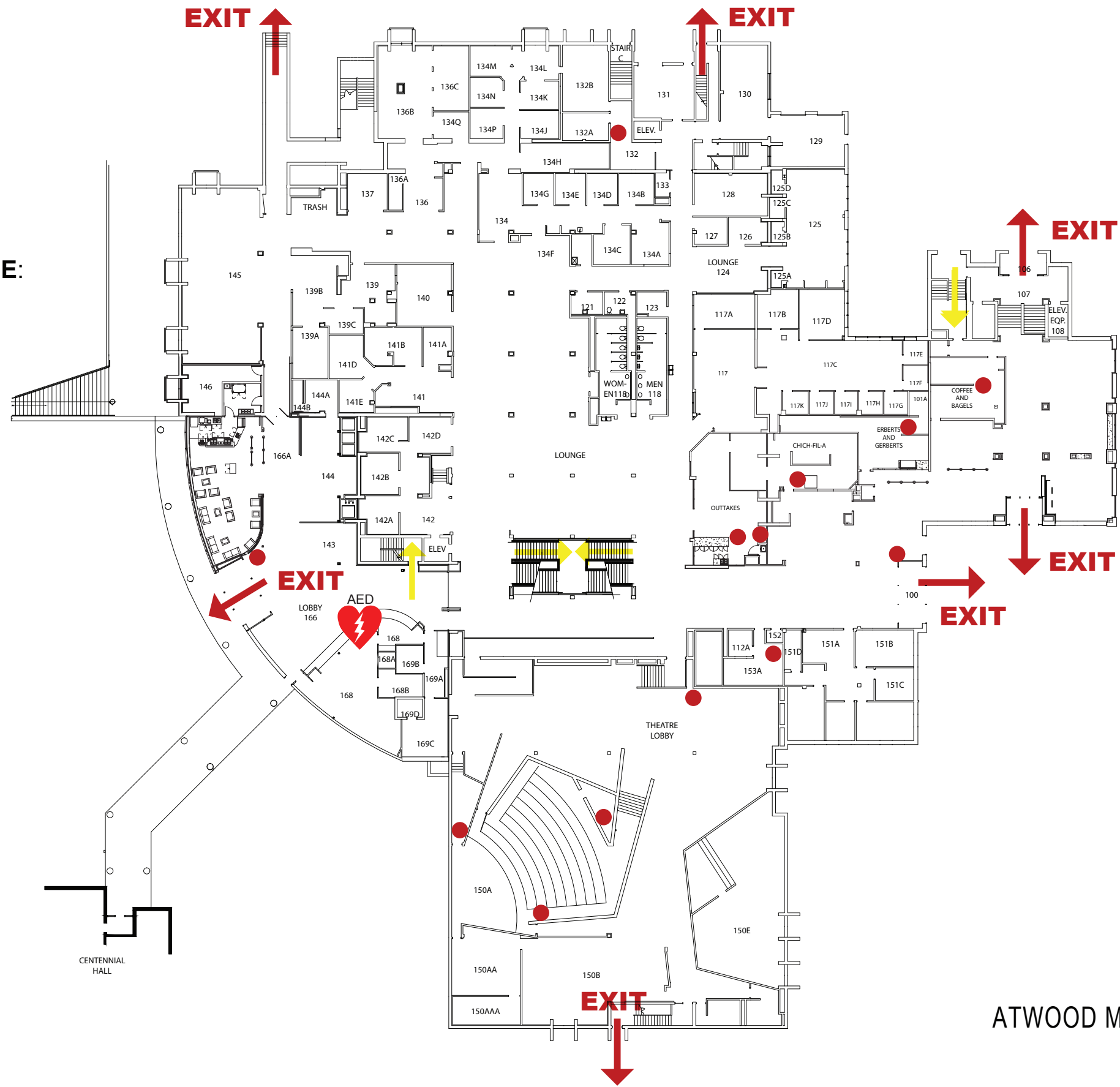
Go to the administration offices in Room 110 or call 4636 from any campus phone.

4:30p.m. - 12:00 Midnight Weekdays, and all day Weekends and Holidays

Go to the Information Desk on the main floor or call 4636 from any campus phone.

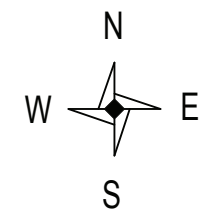
If the Information Desk is Closed

Call the Public Safety Department at 308-3333.



KEY

- You Are Here
- Fire Exit Route
- Severe Weather Shelter Route
- Fire Extinguisher
- AED Defibrillator



ATWOOD MEMORIAL CENTER - Main Level

Updated: 9-16-20