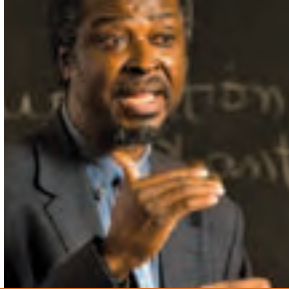
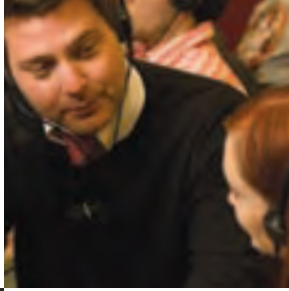




ST. CLOUD STATE UNIVERSITY
FACULTY & STAFF



2005-06 FACULTY PROFILE BY COLLEGE

	TOTAL		BUSINESS		EDUCATION	
	N	%	N	%	N	%
All Faculty	934	100.0%	97	100.0%	195	100.0%
Full-Time	661	70.8%	77	79.4%	128	65.6%
Part-Time	273	29.2%	20	20.6%	67	34.4%
Female	421	45.1%	24	24.7%	118	60.5%
Male	513	54.9%	73	75.3%	77	39.5%
American Indian or Alaska Native	12	1.3%	0	0.0%	4	2.1%
Asian	76	8.1%	19	19.6%	5	2.6%
Black or African American	30	3.2%	1	1.0%	4	2.1%
Hispanic or Latino	24	2.6%	0	0.0%	6	3.1%
White	778	83.3%	74	76.3%	174	89.2%
Unknown	14	1.5%	3	3.1%	2	1.0%
Professors	279	29.9%	43	44.3%	54	27.7%
Associate Professors	156	16.7%	11	11.3%	37	19.0%
Assistant Professors	194	20.8%	13	13.4%	28	14.4%
Instructors	45	4.8%	16	16.5%	10	5.1%
Adjuncts	260	27.8%	14	14.4%	66	33.8%
Tenured	403	43.1%	55	56.7%	78	40.0%
Tenure Track	151	16.2%	9	9.3%	36	18.5%
Non Tenure Track	380	40.7%	33	34.0%	81	41.5%

Continued on next page

2005-06 FACULTY PROFILE BY COLLEGE (CONT'D)

Continued from previous page

FINE ARTS & HUMANITIES		SCIENCE & ENGINEERING		SOCIAL SCIENCES		OTHER*	
N	%	N	%	N	%	N	%
210	100.0%	170	100.0%	183	100.0%	79	100.0%
153	72.9%	145	85.3%	119	65.0%	39	49.4%
57	27.1%	25	14.7%	64	35.0%	40	50.6%
110	52.4%	61	35.9%	76	41.5%	32	40.5%
100	47.6%	109	64.1%	107	58.5%	47	59.5%
3	1.4%	0	0.0%	4	2.2%	1	1.3%
8	3.8%	31	18.2%	13	7.1%	0	0.0%
5	2.4%	4	2.4%	14	7.7%	2	2.5%
9	4.3%	4	2.4%	5	2.7%	0	0.0%
181	86.2%	129	75.9%	145	79.2%	75	94.9%
4	1.9%	2	1.2%	2	1.1%	1	1.3%
73	34.8%	56	32.9%	49	26.8%	4	5.1%
30	14.3%	41	24.1%	28	15.3%	9	11.4%
47	22.4%	47	27.6%	42	23.0%	17	21.5%
7	3.3%	3	1.8%	0	0.0%	9	11.4%
53	25.2%	23	13.5%	64	35.0%	40	50.6%
99	47.1%	89	52.4%	78	42.6%	4	5.1%
35	16.7%	38	22.4%	30	16.4%	3	3.8%
76	36.2%	43	25.3%	75	41.0%	72	91.1%

* Includes faculty in Continuing Studies, Academic Affairs, Administrative Affairs, Academic Learning Center, Honors Program, Student Advising, President's Office, and Student Life and Development.

2006-07 FACULTY PROFILE BY COLLEGE

	TOTAL		BUSINESS		EDUCATION	
	N	%	N	%	N	%
All Faculty	1015	98.4%	99	100.0%	226	100.0%
Full-Time	696	67.4%	81	81.8%	132	58.4%
Part-Time	319	30.9%	18	18.2%	94	41.6%
Female	480	46.5%	28	28.3%	141	62.4%
Male	535	51.8%	71	71.7%	85	37.6%
American Indian or Alaska Native	11	1.1%	0	0.0%	4	1.8%
Asian	80	7.8%	22	22.2%	5	2.2%
Black or African American	35	3.4%	1	1.0%	6	2.7%
Hispanic or Latino	22	2.1%	0	0.0%	7	3.1%
White	853	82.7%	75	75.8%	201	88.9%
Unknown	14	1.4%	1	1.0%	3	1.3%
Professors	279	27.0%	41	41.4%	53	23.5%
Associate Professors	156	15.1%	13	13.1%	33	14.6%
Assistant Professors	225	21.8%	17	17.2%	39	17.3%
Instructors	45	4.4%	10	10.1%	10	4.4%
Adjuncts**	310	30.0%	18	18.2%	91	40.3%
Tenured	415	40.2%	54	54.5%	79	35.0%
Tenure Track	161	15.6%	13	13.1%	32	14.2%
Non Tenure Track	439	42.5%	32	32.3%	115	50.9%

2006-07 FACULTY PROFILE BY COLLEGE (CONT'D)

FINE ARTS & HUMANITIES		SCIENCE & ENGINEERING		SOCIAL SCIENCES		OTHER*	
N	%	N	%	N	%	N	%
225	100.0%	193	100.0%	182	100.0%	90	84.1%
160	71.1%	152	78.8%	128	70.3%	43	40.2%
65	28.9%	41	21.2%	54	29.7%	47	43.9%
122	54.2%	76	39.4%	78	42.9%	35	32.7%
103	45.8%	117	60.6%	104	57.1%	55	51.4%
2	0.9%	1	0.5%	4	2.2%	0	0.0%
9	4.0%	31	16.1%	13	7.1%	0	0.0%
7	3.1%	4	2.1%	14	7.7%	3	2.8%
8	3.6%	4	2.1%	2	1.1%	1	0.9%
195	86.7%	152	78.8%	145	79.7%	85	79.4%
4	1.8%	1	0.5%	4	2.2%	1	0.9%
78	34.7%	57	29.5%	47	25.8%	3	2.8%
27	12.0%	45	23.3%	27	14.8%	11	10.3%
48	21.3%	49	25.4%	54	29.7%	18	16.8%
9	4.0%	3	1.6%	2	1.1%	11	10.3%
63	28.0%	39	20.2%	52	28.6%	47	43.9%
103	45.8%	96	49.7%	77	42.3%	6	5.6%
38	16.9%	33	17.1%	41	22.5%	4	3.7%
84	37.3%	64	33.2%	64	35.2%	80	74.8%

* Includes faculty in Continuing Studies, Academic Affairs, Administrative Affairs, Academic Learning Center, Honors Program, Student Advising, President's Office, and Student Life and Development.

** Adjunct counts include employees who taught courses in academic departments but have primary appointments in non-academic departments

FY2003-FY2007 FACULTY HEADCOUNT BY DEPARTMENT AND RANK*

	2002-03	2003-04	2004-05	2005-06	2006-07**
UNIVERSITY					
University Total	820	796	836	855	925
Professor	259	260	265	273	276
Associate Professor	148	138	147	148	145
Assistant Professor	178	164	165	177	207
Instructor	40	26	28	36	34
Adjunct	195	208	231	221	263
COLLEGE OF BUSINESS					
College of Business Total	83	81	79	97	99
Professor	38	37	40	43	41
Associate Professor	12	12	12	11	13
Assistant Professor	13	12	9	13	17
Instructor	8	6	8	16	10
Adjunct	12	14	10	14	18
Accounting Total					
Accounting Total	16	16	15	17	18
Professor	6	6	6	7	7
Associate Professor	2	2	3	5	5
Assistant Professor	4	4	3	2	3
Instructor	2	2	2	2	1
Adjunct	2	2	1	1	2
Business Computer Information Systems Total					
Business Computer Information Systems Total	15	14	14	15	16
Professor	9	9	10	10	9
Associate Professor	2	2	1	1	1
Assistant Professor	2	2	2	3	3
Instructor	2	0	0	0	0
Adjunct	0	1	1	1	3
Finance, Insurance and Real Estate Total					
Finance, Insurance and Real Estate Total	12	12	10	11	12
Professor	4	4	4	3	3
Associate Professor	2	2	2	2	3
Assistant Professor	3	2	2	3	3
Instructor	1	1	2	2	2
Adjunct	2	3	0	1	1
Management Total					
Management Total	21	19	20	27	22
Professor	9	9	11	12	11
Associate Professor	5	5	3	1	1
Assistant Professor	1	0	0	2	3
Instructor	2	2	2	7	4
Adjunct	4	3	4	5	3

Continued on next page

FY2003-FY2007 FACULTY HEADCOUNT BY DEPARTMENT AND RANK* (CONT'D)

Continued from previous page

	2002-03	2003-04	2004-05	2005-06	2006-07
Marketing & Business Law Total	18	20	20	27	27
Professor	9	9	9	11	10
Associate Professor	1	1	3	2	3
Assistant Professor	3	4	2	3	5
Instructor	1	1	2	5	3
Adjunct	4	5	4	6	6
COLLEGE OF EDUCATION					
College of Education Total	201	194	205	195	226
Professor	56	56	56	52	53
Associate Professor	32	30	26	38	33
Assistant Professor	33	32	31	28	39
Instructor	14	11	11	10	10
Adjunct	66	65	81	67	91
Child & Family Studies Total	13	17	26	19	20
Professor	3	3	4	5	3
Associate Professor	1	1	1	2	2
Assistant Professor	3	2	2	2	3
Instructor	2	2	2	1	1
Adjunct	4	9	17	9	11
Counselor Education & Educational Psychology Total	22	19	17	18	19
Professor	9	9	8	7	7
Associate Professor	4	4	1	2	3
Assistant Professor	4	4	3	3	3
Instructor	0	0	0	0	0
Adjunct	5	2	5	6	6
Education Leadership & Community Psychology Total	20	18	24	22	29
Professor	7	8	8	7	9
Associate Professor	2	3	4	6	5
Assistant Professor	6	4	2	2	5
Instructor	0	0	0	0	0
Adjunct	5	3	10	7	10
Health, Physical Education, Recreation & Sport Science	21	19	22	27	29
Professor	12	11	10	9	9
Associate Professor	3	2	3	5	6
Assistant Professor	2	3	3	4	2
Instructor	0	0	0	2	2
Adjunct	4	3	6	7	10

Continued on next page

FY2003-FY2007 FACULTY HEADCOUNT BY DEPARTMENT AND RANK* (CONT'D)

Continued from previous page

	2002-03	2003-04	2004-05	2005-06	2006-07
COLLEGE OF EDUCATION, CONTINUED					
Human Relations & Multicultural Education Total	15	14	17	14	17
Professor	1	1	1	1	2
Associate Professor	5	5	5	7	7
Assistant Professor	3	3	3	1	1
Instructor	0	0	0	0	0
Adjunct	6	5	8	5	7
Information Media Total (Includes all LRTS faculty)	33	35	33	30	40
Professor	9	8	8	8	8
Associate Professor	8	7	8	9	5
Assistant Professor	10	10	11	9	14
Instructor	3	3	1	0	2
Adjunct	3	7	5	4	11
Special Education Total	22	25	20	23	26
Professor	5	5	5	4	4
Associate Professor	2	2	2	1	1
Assistant Professor	3	3	3	5	7
Instructor	3	2	2	1	1
Adjunct	9	13	8	12	13
Teacher Development Total	54	46	44	40	41
Professor	10	11	12	11	11
Associate Professor	7	6	2	4	3
Assistant Professor	2	2	2	2	3
Instructor	5	4	6	6	4
Adjunct	30	23	22	17	20
COLLEGE OF FINE ARTS & HUMANITIES					
College of Fine Arts & Humanities Total	203	204	201	210	225
Professor	67	66	67	73	78
Associate Professor	35	33	36	30	27
Assistant Professor	43	39	40	47	48
Instructor	9	5	5	7	9
Adjunct	49	61	53	53	63
Art Total	14	15	16	17	18
Professor	4	4	4	7	9
Associate Professor	4	6	6	3	2
Assistant Professor	6	3	4	5	5
Instructor	0	0	0	0	0
Adjunct	0	2	2	2	2

Continued on next page

FY2003-FY2007 FACULTY HEADCOUNT BY DEPARTMENT AND RANK* (CONT'D)

Continued from previous page

	2002-03	2003-04	2004-05	2005-06	2006-07
Communication Sciences & Disorders Total	17	22	14	11	12
Professor	3	2	3	2	2
Associate Professor	2	2	1	2	2
Assistant Professor	1	1	3	2	3
Instructor	1	1	1	1	1
Adjunct	10	16	6	4	4
Communication Studies Total	31	31	37	38	37
Professor	16	14	14	14	14
Associate Professor	4	4	4	3	3
Assistant Professor	6	7	7	8	8
Instructor	1	1	2	2	3
Adjunct	4	5	10	11	9
English Total	43	43	44	48	56
Professor	17	18	17	18	19
Associate Professor	4	4	5	5	5
Assistant Professor	9	8	10	11	10
Instructor	3	2	0	0	2
Adjunct	10	11	12	14	20
Foreign Language & Literature Total	16	13	14	15	14
Professor	5	5	6	6	7
Associate Professor	4	2	3	4	3
Assistant Professor	3	4	3	2	2
Instructor	1	1	1	0	0
Adjunct	3	1	1	3	2
Mass Communications Total	19	22	21	25	24
Professor	5	5	6	6	6
Associate Professor	3	3	3	3	3
Assistant Professor	3	6	5	6	6
Instructor	2	0	0	0	1
Adjunct	6	8	7	10	8
Music Total	33	31	28	27	34
Professor	9	8	8	11	12
Associate Professor	7	5	7	3	2
Assistant Professor	5	4	2	4	5
Instructor	1	0	1	0	0
Adjunct	11	14	10	9	15

Continued on next page

FY2003-FY2007 FACULTY HEADCOUNT BY DEPARTMENT AND RANK*

Continued from previous page

	2002-03	2003-04	2004-05	2005-06	2006-07
COLLEGE OF FINE ARTS, CONTINUED					
Philosophy Total	17	15	15	14	15
Professor	5	6	4	4	5
Associate Professor	3	4	5	5	5
Assistant Professor	9	5	5	5	5
Instructor	0	0	0	0	0
Adjunct	0	0	1	0	0
Theatre, Film Studies & Dance Total	12	11	11	14	13
Professor	2	3	4	4	4
Associate Professor	4	3	2	2	2
Assistant Professor	1	1	1	4	4
Instructor	0	0	0	4	2
Adjunct	5	4	4	0	1
COLLEGE OF SCIENCE & ENGINEERING					
College of Science & Engineering Total	168	162	180	170	193
Professor	53	55	54	56	57
Associate Professor	43	38	41	41	45
Assistant Professor	48	45	49	47	49
Instructor	8	3	3	3	3
Adjunct	16	21	33	23	39
Aviation Total	13	9	11	8	11
Professor	0	1	1	1	0
Associate Professor	3	2	2	1	2
Assistant Professor	3	3	3	5	4
Instructor	0	0	1	0	0
Adjunct	7	3	4	1	5
Biological Sciences Total	23	22	26	25	29
Professor	11	11	11	12	12
Associate Professor	4	4	4	7	11
Assistant Professor	7	6	8	4	2
Instructor	1	1	1	0	1
Adjunct	0	0	2	2	3
Chemistry Total	13	14	14	14	16
Professor	3	4	4	4	5
Associate Professor	3	4	6	6	5
Assistant Professor	7	4	2	3	4
Instructor	0	0	0	0	0
Adjunct	0	2	2	1	2

Continued on next page

FY2003-FY2007 FACULTY HEADCOUNT BY DEPARTMENT AND RANK* (CONT'D)

Continued from previous page

	2002-03	2003-04	2004-05	2005-06	2006-07
Computer Science Total	10	10	10	10	11
Professor	4	4	5	5	5
Associate Professor	3	3	3	2	3
Assistant Professor	3	2	2	2	2
Instructor	0	0	0	0	0
Adjunct	0	1	0	1	1
Earth & Atmospheric Sciences Total	9	11	8	9	10
Professor	4	4	4	4	3
Associate Professor	3	3	2	2	3
Assistant Professor	2	3	2	2	3
Instructor	0	0	0	0	0
Adjunct	0	1	0	1	1
Electrical & Computer Engineering Total	10	10	11	11	11
Professor	4	4	4	4	4
Associate Professor	0	0	0	1	2
Assistant Professor	6	6	7	6	5
Instructor	0	0	0	0	0
Adjunct	0	0	0	0	0
Environmental & Technological Studies Total	10	10	10	8	10
Professor	2	2	2	2	1
Associate Professor	3	3	4	4	4
Assistant Professor	4	4	3	2	2
Instructor	0	0	0	0	0
Adjunct	1	1	1	0	3
Mathematics Total	35	31	33	35	36
Professor	9	9	9	10	12
Associate Professor	9	9	11	10	8
Assistant Professor	7	6	6	6	10
Instructor	7	2	0	1	1
Adjunct	3	5	7	8	5
Mechanical & Manufacturing Engineering Total	7	7	10	9	9
Professor	3	3	3	4	4
Associate Professor	2	1	1	1	1
Assistant Professor	2	3	3	2	2
Instructor	0	0	0	0	0
Adjunct	0	0	3	2	2

Continued on next page

FY2003-FY2007 FACULTY HEADCOUNT BY DEPARTMENT AND RANK* (CONT'D)

Continued from previous page

	2002-03	2003-04	2004-05	2005-06	2006-07
COLLEGE OF SCIENCE & ENGINEERING, CONTINUED					
Nursing Science Total	11	15	23	17	26
Professor	1	1	1	1	1
Associate Professor	2	4	3	3	4
Assistant Professor	5	4	6	7	7
Instructor	0	0	1	0	0
Adjunct	3	6	12	6	14
Physics, Astronomy & Engineering Science Total	10	11	11	10	10
Professor	6	7	5	6	6
Associate Professor	4	2	2	0	0
Assistant Professor	0	1	4	4	4
Instructor	0	0	0	0	0
Adjunct	0	1	0	0	0
Statistics and Computer Networking Total	16	12	13	14	14
Professor	5	5	5	3	4
Associate Professor	7	3	3	4	2
Assistant Professor	2	3	3	4	4
Instructor	0	0	0	2	1
Adjunct	2	1	2	1	3
COLLEGE OF SOCIAL SCIENCES					
College of Social Sciences Total	165	155	171	183	182
Professor	45	46	48	49	47
Associate Professor	26	25	32	28	27
Assistant Professor	41	36	36	42	54
Instructor	1	1	1	0	2
Adjunct	52	47	54	64	52
Community Studies Total	13	13	11	15	14
Professor	6	5	3	4	4
Associate Professor	0	1	3	2	2
Assistant Professor	3	3	1	2	2
Instructor	0	0	0	0	0
Adjunct	4	4	4	7	6
Criminal Justice Total	17	18	20	20	22
Professor	5	6	6	6	5
Associate Professor	3	2	2	2	2
Assistant Professor	3	3	3	3	3
Instructor	0	0	0	0	0
Adjunct	6	7	9	9	12

Continued on next page

FY2003-FY2007 FACULTY HEADCOUNT BY DEPARTMENT AND RANK* (CONT'D)

Continued from previous page

	2002-03	2003-04	2004-05	2005-06	2006-07
Economics Total	20	19	21	22	21
Professor	12	12	12	13	10
Associate Professor	3	3	3	2	3
Assistant Professor	4	3	5	7	8
Instructor	0	0	0	0	0
Adjunct	1	1	1	0	0
Ethnic Studies Total	8	9	11	12	12
Professor	1	1	1	1	1
Associate Professor	0	1	3	3	3
Assistant Professor	4	3	2	2	3
Instructor	1	1	1	0	0
Adjunct	2	3	4	6	5
Geography Total	20	17	19	22	15
Professor	3	2	4	4	5
Associate Professor	5	6	5	4	3
Assistant Professor	3	2	2	4	3
Instructor	0	0	0	0	1
Adjunct	9	7	8	10	3
History Total	16	14	17	21	21
Professor	2	2	4	4	4
Associate Professor	1	1	0	1	1
Assistant Professor	6	7	8	7	9
Instructor	0	0	0	0	0
Adjunct	7	4	5	9	7
Political Science Total	16	15	14	16	15
Professor	5	6	5	4	4
Associate Professor	4	3	4	4	4
Assistant Professor	2	1	3	2	3
Instructor	0	0	0	0	0
Adjunct	5	5	2	6	4
Psychology Total	14	14	14	12	14
Professor	2	2	3	3	3
Associate Professor	2	3	5	4	4
Assistant Professor	7	6	3	4	5
Instructor	0	0	0	0	0
Adjunct	3	3	3	1	2

Continued on next page

FY2003-FY2007 FACULTY HEADCOUNT BY DEPARTMENT AND RANK* (CONT'D)

Continued from previous page

	2002-03	2003-04	2004-05	2005-06	2006-07
COLLEGE OF SOCIAL SCIENCES, CONTINUED					
Social Work Total	17	11	10	14	17
Professor	2	3	3	2	2
Associate Professor	4	2	2	2	2
Assistant Professor	2	2	3	3	7
Instructor	0	0	0	0	0
Adjunct	9	4	2	7	6
Sociology/Anthropology Total	21	20	27	23	25
Professor	7	7	7	8	9
Associate Professor	3	3	5	3	2
Assistant Professor	6	4	3	6	9
Instructor	0	0	0	0	1
Adjunct	5	6	12	6	4
Women's Studies Total	3	5	7	5	5
Professor	0	0	0	0	0
Associate Professor	1	0	0	0	0
Assistant Professor	1	2	3	2	2
Instructor	0	0	0	0	0
Adjunct	1	3	4	3	3

* University and College totals are adjusted for faculty in deans' offices.

** Adjunct counts include employees who taught courses in academic departments but have primary appointments in non-academic departments.

FY2003-FY2007 FACULTY APPOINTMENT STATUS BY DEPARTMENT

	2002-03	2003-04	2004-05	2005-06	2006-07
UNIVERSITY TOTAL					
Tenured	354	363	379	397	409
Probationary	179	147	147	154	157
Fixed Term	82	72	75	71	72
COLLEGE OF BUSINESS TOTAL					
Tenured	43	51	52	54	54
Probationary	17	8	7	9	13
Fixed Term	10	8	10	15	12
Accounting					
Tenured	9	10	10	13	13
Probationary	3	2	2	0	0
Fixed Term	2	2	2	3	2
Business Computer Information Systems					
Tenured	9	11	11	9	9
Probationary	4	2	2	3	4
Fixed Term	2	0	0	0	0
Finance, Insurance & Real Estate					
Tenured	5	6	7	6	6
Probationary	3	2	1	2	3
Fixed Term	2	1	2	2	1
Management					
Tenured	11	14	14	13	12
Probationary	4	0	0	2	3
Fixed Term	2	2	2	4	4
Marketing & Business Law					
Tenured	9	10	10	13	13
Probationary	3	2	2	2	3
Fixed Term	2	3	4	6	5
COLLEGE OF EDUCATION TOTAL					
Tenured	76	75	76	77	79
Probationary	38	33	29	35	32
Fixed Term	15	16	17	14	18
Child & Family Studies					
Tenured	4	4	4	6	5
Probationary	3	2	2	2	2
Fixed Term	2	2	3	2	1
Counselor Education & Educational Psychology					
Tenured	9	9	9	8	9
Probationary	3	3	2	4	4
Fixed Term	1	1	1	0	0
Education Leadership & Community Psychology					
Tenured	7	8	10	10	12
Probationary	7	6	3	4	6
Fixed Term	1	1	1	1	0

Continued on next page

FY2003-FY2007 FACULTY APPOINTMENT STATUS BY DEPARTMENT (CONT'D)

Continued from previous page

	2002-03	2003-04	2004-05	2005-06	2006-07
COLLEGE OF EDUCATION, CONTINUED					
Health, Physical Education, Recreation & Sport Science					
Tenured	14	13	12	12	13
Probationary	3	2	4	6	3
Fixed Term	0	1	0	2	3
Human Relations & Multicultural Education					
Tenured	6	6	6	8	8
Probationary	3	3	2	1	1
Fixed Term	0	0	1	0	1
Information Media (Includes all LRTS faculty)					
Tenured	17	15	15	14	13
Probationary	10	9	11	12	8
Fixed Term	3	4	2	0	7
Special Education					
Tenured	5	6	6	5	5
Probationary	4	3	3	4	6
Fixed Term	3	3	3	2	1
Teacher Development					
Tenured	14	14	14	14	14
Probationary	5	5	2	2	2
Fixed Term	5	4	6	7	4
COLLEGE OF FINE ARTS & HUMANITIES TOTAL					
Tenured	97	91	97	98	103
Probationary	32	29	28	39	38
Fixed Term	24	22	22	17	13
Art					
Tenured	6	6	8	9	9
Probationary	6	5	5	4	5
Fixed Term	2	2	1	2	0
Communication Disorders					
Tenured	4	4	4	3	4
Probationary	2	1	3	3	3
Fixed Term	1	1	1	1	1
Communication Studies					
Tenured	18	16	17	16	16
Probationary	5	5	4	7	4
Fixed Term	4	5	6	4	5
English					
Tenured	20	20	20	23	25
Probationary	7	7	6	8	8
Fixed Term	6	5	6	3	0

Continued on next page

FY2003-FY2007 FACULTY APPOINTMENT STATUS BY DEPARTMENT (CONT'D)

Continued from previous page

	2002-03	2003-04	2004-05	2005-06	2006-07
Foreign Language & Literature					
Tenured	10	8	9	9	10
Probationary	2	2	3	3	2
Fixed Term	1	2	1	0	0
Mass Communications					
Tenured	8	8	10	10	10
Probationary	3	3	3	4	5
Fixed Term	2	3	1	1	2
Music					
Tenured	17	14	15	14	14
Probationary	2	2	0	3	3
Fixed Term	3	1	3	1	1
Philosophy					
Tenured	8	9	8	8	9
Probationary	4	3	3	5	5
Fixed Term	5	3	3	1	1
Theatre, Film Studies & Dance					
Tenured	6	6	6	6	6
Probationary	1	1	1	2	3
Fixed Term	0	0	0	4	3
COLLEGE OF SCIENCE & ENGINEERING TOTAL					
Tenured	70	76	79	89	96
Probationary	60	52	49	41	33
Fixed Term	20	13	19	16	19
Aviation					
Tenured	3	3	3	3	2
Probationary	3	3	3	4	4
Fixed Term	0	0	1	0	0
Biological Sciences					
Tenured	12	13	14	17	19
Probationary	10	7	6	5	5
Fixed Term	0	2	4	1	2
Chemistry					
Tenured	5	6	7	9	11
Probationary	6	6	5	3	2
Fixed Term	2	0	0	1	0
Computer Science					
Tenured	5	5	7	7	8
Probationary	5	4	3	2	1
Fixed Term	0	0	0	0	1
Earth & Atmospheric Sciences					
Tenured	6	7	5	6	5
Probationary	3	2	3	2	3
Fixed Term	0	1	0	0	1

Continued on next page

FY2003-FY2007 FACULTY APPOINTMENT STATUS BY DEPARTMENT (CONT'D)

Continued from previous page

	2002-03	2003-04	2004-05	2005-06	2006-07
Electrical & Computer Engineering					
Tenured	4	4	4	6	8
Probationary	6	6	7	5	3
Fixed Term	0	0	0	0	0
COLLEGE OF SCIENCE & ENGINEERING, CONTINUED					
Environmental & Technological Studies					
Tenured	5	7	7	7	6
Probationary	4	2	2	1	11
Fixed Term	0	0	0	0	0
Mathematics					
Tenured	14	14	16	16	16
Probationary	9	9	7	7	3
Fixed Term	9	3	3	4	9
Mechanical & Manufacturing Engineering					
Tenured	3	3	3	4	5
Probationary	3	3	3	3	2
Fixed Term	1	1	1	0	0
Nursing Science					
Tenured	0	0	0	2	4
Probationary	8	8	8	8	6
Fixed Term	0	1	3	1	2
Physics, Astronomy & Engineering Science					
Tenured	7	8	7	6	6
Probationary	1	0	0	0	1
Fixed Term	2	2	4	4	3
Statistics and Computer Networking					
Tenured	6	6	6	6	6
Probationary	2	2	2	1	2
Fixed Term	6	3	3	5	1
COLLEGE OF SOCIAL SCIENCES TOTAL					
Tenured	68	70	75	79	77
Probationary	32	25	34	30	41
Fixed Term	13	13	7	9	10
Community Studies					
Tenured	6	6	4	6	6
Probationary	3	2	2	2	2
Fixed Term	0	1	1	0	0
Criminal Justice					
Tenured	8	8	8	8	7
Probationary	2	1	2	2	2
Fixed Term	1	2	1	1	1

Continued on next page

FY2003-FY2007 FACULTY APPOINTMENT STATUS BY DEPARTMENT (CONT'D)

Continued from previous page

	2002-03	2003-04	2004-05	2005-06	2006-07
Economics					
Tenured	16	16	16	16	14
Probationary	2	2	3	4	6
Fixed Term	1	1	0	2	1
Ethnic Studies					
Tenured	1	1	3	3	3
Probationary	4	4	3	3	3
Fixed Term	1	1	1	0	1
Geography					
Tenured	7	7	8	9	8
Probationary	4	3	3	3	3
Fixed Term	0	0	0	0	1
History					
Tenured	3	4	5	6	6
Probationary	4	2	6	5	7
Fixed Term	2	4	1	1	1
Political Science					
Tenured	7	9	9	8	8
Probationary	3	1	2	2	2
Fixed Term	1	0	1	0	1
Psychology					
Tenured	5	5	5	7	8
Probationary	5	5	6	4	3
Fixed Term	1	0	0	0	0
Social Work					
Tenured	6	5	6	5	5
Probationary	1	1	2	2	5
Fixed Term	1	1	0	0	1
Sociology/Anthropology					
Tenured	8	9	11	11	11
Probationary	4	3	3	2	6
Fixed Term	4	2	1	4	3
Women's Studies					
Tenured	1	0	0	0	0
Probationary	0	1	2	1	2
Fixed Term	1	1	1	1	0

*University and College totals may be adjusted for faculty in deans' offices.

2003-07 INSTRUCTIONAL FTE BY DEPARTMENT*

Continued from previous page

	2002-03	2003-04	2004-05	2005-06	2006-07
UNIVERSITY					
University Total	513.12	500.53	513.42	505.64	534.34
COLLEGE OF BUSINESS					
College of Business Total	56.13	60.21	30.13	58.47	61.95
Accounting	10.50	11.83	11.75	11.60	11.85
Business Computer Info Systems	13.25	11.50	11.00	10.79	10.46
Finance, Ins, Real Estate	7.63	8.38	9.25	7.39	8.06
Management	12.75	14.75	14.63	12.10	14.12
Marketing & Business Law	11.13	13.75	13.50	16.46	16.21
COLLEGE OF EDUCATION (Does not include MN Highway Safety Center)					
College of Education Total	97.96	92.21	93.36	93.68	94.62
Child & Family Studies	6.31	5.45	5.33	5.91	5.73
Counselor Educ & Educ Psychology	12.10	12.33	11.33	10.84	11.69
Educ Leadership & Community Psychology	12.68	12.34	13.29	14.08	16.88
Health, Phy Ed, Rec, & Sport Science	15.42	14.34	15.05	17.14	14.62
Human Rel & Multicultural Educ	8.54	8.83	8.07	8.37	8.23
Information Media (includes all LRTS faculty)	6.90	6.49	6.14	7.23	6.52
Special Education	12.29	10.75	11.38	9.72	11.54
Teacher Development	23.72	21.06	20.95	19.76	19.28
COLLEGE OF FINE ARTS AND HUMANITIES					
College of Fine Arts and Humanities Total	130.03	123.70	130.33	128.59	137.30
Art	13.12	11.58	13.83	13.20	14.81
Communication Disorders	6.71	4.95	6.48	6.20	6.87
Communication Studies	22.38	23.12	26.78	22.96	24.16
English	26.75	26.92	26.46	26.43	29.92
Foreign Language & Literature	11.80	9.92	11.83	11.40	11.01
Mass Communications	10.96	11.94	11.75	11.90	13.80
Music	17.21	16.46	17.01	18.03	17.62
Philosophy	14.62	12.00	9.55	11.25	11.75
Theatre & Film Studies	5.50	5.81	5.88	7.14	7.19

Continued on next page

Continued from previous page

	2002-03	2003-04	2004-05	2005-06	2006-07
COLLEGE OF SCIENCE AND ENGINEERING					
College of Science and Engineering Total	135.58	129.06	130.33	123.16	136.06
Aviation	6.08	6.63	6.35	5.58	5.52
Biological Sciences	23.00	19.99	20.33	18.97	22.98
Chemistry	10.50	11.25	11.71	12.25	13.31
Computer Science	6.50	7.13	8.50	5.11	7.15
Earth & Atmospheric Sciences	8.00	8.25	6.50	7.27	8.11
Electrical & Computer Engineering	9.25	9.50	10.00	7.46	10.00
Environmental & Technological Studies	7.50	8.29	8.32	6.81	6.74
Mathematics	30.00	24.37	24.33	24.85	25.71
Mechanical & Manufacturing Engineering	6.25	5.50	6.71	5.19	6.44
Nursing Science	7.50	8.45	9.91	10.50	12.41
Physics Astronomy & Engr Science	9.33	9.17	8.17	8.67	8.50
Statistics	11.04	10.31	9.30	10.44	9.19
COLLEGE OF SOCIAL SCIENCES					
College of Social Sciences	93.42	95.35	99.27	101.74	104.42
Community Studies	8.87	7.50	7.13	7.25	6.75
Criminal Justice	9.25	9.55	10.00	9.77	8.46
Economics	14.13	14.31	15.75	17.92	17.08
Ethnic Studies	4.75	5.64	5.13	4.96	4.33
Geography	9.68	8.78	9.63	10.66	9.35
History	8.63	9.63	9.78	10.57	11.82
Political Science	9.75	9.13	9.64	8.37	9.71
Psychology	9.00	9.45	10.63	9.01	11.08
Social Work	5.50	7.00	7.75	5.96	7.33
Sociology/Anthropology	11.98	13.00	12.21	15.27	15.70
Women's Studies	1.88	2.00	2.27	2.00	1.81

*University and College totals are adjusted for instructional FTE for faculty in dean's offices.

FACULTY OF COLOR BY DEPARTMENT 2003-2007

	2002-03	2003-04	2004-05	2005-06	2006-07
UNIVERSITY					
University Total	113 (13.7%)	115 (14.3%)	122 (14.4%)	137 (16.0%)	142 (15.4%)
COLLEGE OF BUSINESS					
Accounting	0 (0.0%)	0 (0.0%)	0 (0.0%)	0 (0.0%)	0 (0.0%)
Business Computer Information Systems	7 (46.7%)	7 (50.0%)	7 (50.0%)	7 (46.7%)	7 (43.8%)
Finance, Insurance, Real Estate	2 (16.7%)	3 (25.0%)	3 (30.0%)	4 (36.4%)	5 (41.7%)
Management	4 (19.0%)	4 (21.1%)	4 (20.0%)	6 (25.0%)	7 (31.8%)
Marketing & Business Law	1 (5.6%)	1 (5.0%)	1 (5.0%)	2 (7.4%)	4 (14.8%)
College of Business Total	14 (16.9%)	15 (18.5%)	15 (18.5%)	19 (19.8%)	23 (23.2%)
COLLEGE OF EDUCATION					
Child & Family Studies	2 (15.4%)	2 (11.8%)	2 (7.7%)	4 (21.1%)	2 (10.0%)
Counselor Education & Educational Psychology	3 (16.7%)	3 (20.0%)	2 (11.8%)	2 (11.1%)	2 (10.5%)
Education Leadership & Community Psychology	3 (15.0%)	3 (16.7%)	3 (12.5%)	3 (13.6%)	5 (17.2%)
Health, Physical Education, Recreation & Sport Science	0 (0.0%)	0 (0.0%)	0 (0.0%)	1 (3.7%)	1 (3.4%)
Human Relations & Multicultural Education	4 (26.7%)	3 (21.4%)	3 (17.6%)	2 (14.3%)	2 (11.8%)
Information Media (includes all LRTS faculty)	0 (0.0%)	1 (3.4%)	0 (0.0%)	1 (3.3%)	3 (7.1%)
Special Education	0 (0.0%)	0 (0.0%)	0 (0.0%)	1 (4.3%)	1 (3.8%)
Teacher Development	6 (11.1%)	6 (13.0%)	6 (13.6%)	6 (15.0%)	5 (12.2%)
College of Education Total	18 (8.9%)	17 (9.0%)	16 (8.0%)	19 (9.8%)	21 (9.3%)
COLLEGE OF FINE ARTS AND HUMANITIES					
Art	2 (14.3%)	2 (13.3%)	2 (12.5%)	2 (11.8%)	3 (16.7%)
Communications Disorders	0 (0.0%)	1 (4.5%)	0 (0.0%)	0 (0.0%)	0 (0.0%)
Communication Studies	1 (3.2%)	1 (3.2%)	1 (2.7%)	2 (5.3%)	3 (8.1%)
English	6 (14.0%)	6 (14.0%)	6 (13.6%)	5 (10.4%)	5 (8.9%)
Foreign Language & Literature	4 (26.7%)	4 (30.8%)	5 (35.7%)	6 (40.0%)	6 (42.9%)
Mass Communications	2 (10.5%)	2 (9.1%)	2 (9.5%)	3 (12.0%)	3 (12.5%)
Music	2 (6.1%)	3 (9.7%)	1 (3.6%)	0 (0.0%)	0 (0.0%)
Philosophy	3 (17.6%)	3 (20.0%)	3 (20.0%)	3 (21.4%)	3 (20.0%)
Theatre & Film Studies	3 (25.0%)	3 (27.3%)	3 (27.3%)	3 (25.0%)	3 (23.1%)
College of Fine Arts and Humanities Total	24 (11.4%)	25 (12.3%)	23 (11.3%)	24 (11.4%)	26 (11.6%)

Continued on next page

FACULTY OF COLOR BY DEPARTMENT 2003-2007 (CONT'D)

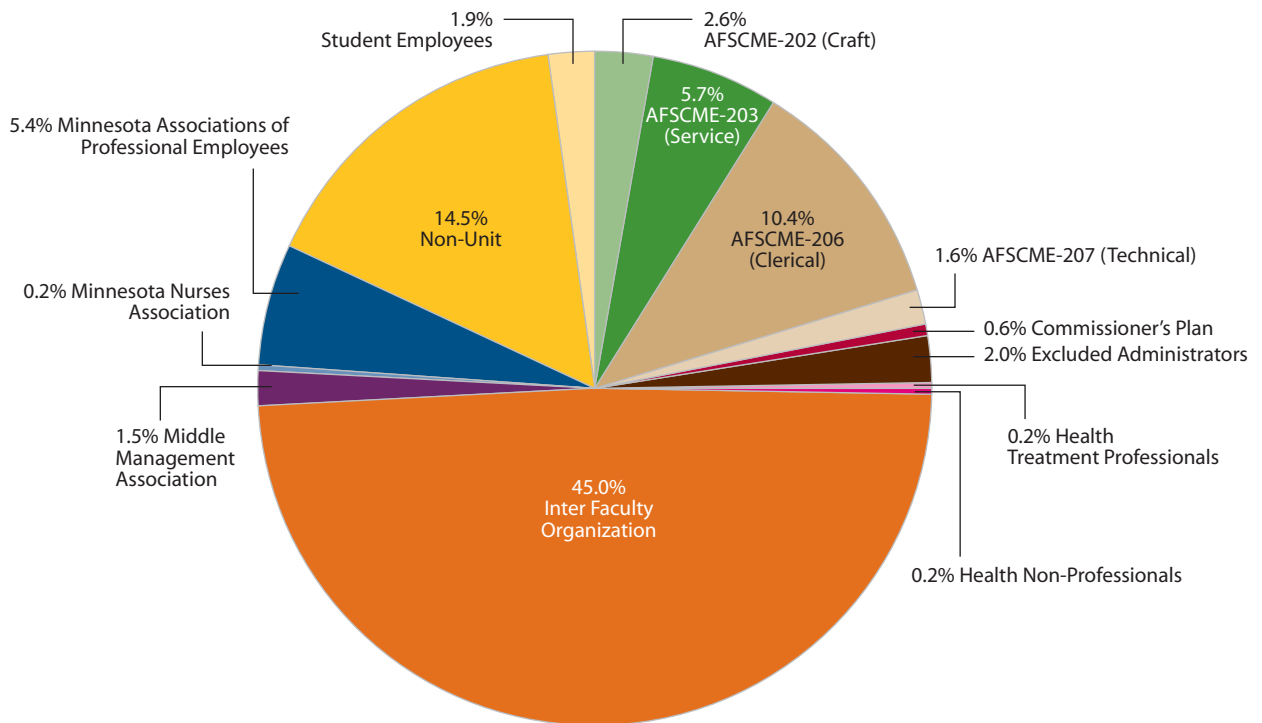
Continued from previous page

	2002-03	2003-04	2004-05	2005-06	2006-07
COLLEGE OF SCIENCE AND ENGINEERING					
Aviation	1 (7.7%)	1 (11.1%)	1 (9.1%)	1 (12.5%)	1 (9.1%)
Biological Sciences	1 (4.3%)	1 (4.5%)	2 (7.7%)	2 (8.0%)	3 (10.3%)
Chemistry	2 (15.4%)	2 (14.3%)	2 (14.3%)	2 (14.3%)	4 (25.0%)
Computer Science	5 (50.0%)	5 (50.0%)	5 (50.0%)	5 (50.0%)	6 (54.5%)
Earth & Atmospheric Sciences	0 (0.0%)	0 (0.0%)	0 (0.0%)	0 (0.0%)	1 (10.0%)
Electrical & Computer Engineering	5 (50.0%)	5 (50.0%)	6 (54.5%)	6 (54.5%)	6 (54.5%)
Environmental & Technological Studies	1 (10.0%)	1 (10.0%)	1 (10.0%)	1 (12.5%)	1 (10.0%)
Mathematics	9 (25.7%)	7 (22.6%)	6 (18.2%)	6 (17.1%)	7 (19.4%)
Mechanical & Manufacturing Engineering	3 (42.9%)	2 (28.6%)	5 (50.0%)	4 (44.4%)	4 (44.4%)
Nursing Science	0 (0.0%)	0 (0.0%)	0 (0.0%)	0 (0.0%)	0 (0.0%)
Physics Astronomy & Engineering Science	2 (20.0%)	2 (18.2%)	3 (27.3%)	3 (30.0%)	1 (10.0%)
Statistics	6 (37.5%)	6 (50.0%)	7 (53.8%)	8 (61.5%)	6 (42.9%)
College of Science and Engineering Total	35 (20.7%)	32 (19.6%)	38 (21.0%)	38 (22.4%)	40 (20.7%)
COLLEGE OF SOCIAL SCIENCES					
Community Studies	2 (15.4%)	3 (23.1%)	3 (27.3%)	5 (33.3%)	6 (42.9%)
Criminal Justice	1 (5.9%)	1 (5.6%)	1 (5.0%)	2 (10.0%)	2 (9.1%)
Economics	2 (10.0%)	2 (10.5%)	3 (14.3%)	4 (18.2%)	4 (19.0%)
Ethnic Studies	8(100.0%)	9(100.0%)	11(100.0%)	11 (91.7%)	9 (75.0%)
Geography	2 (10.0%)	2 (11.8%)	2 (10.5%)	2 (9.1%)	1 (6.7%)
History	3 (18.8%)	3 (21.4%)	3 (17.6%)	4 (19.0%)	3 (14.3%)
Political Science	2 (12.5%)	2 (13.3%)	1 (7.1%)	1 (6.3%)	1 (607%)
Psychology	1 (7.1%)	1 (7.1%)	1 (7.1%)	1 (8.3%)	1 (7.1%)
Social Work	0 (0.0%)	0 (0.0%)	0 (0.0%)	1 (7.1%)	1 (5.9%)
Sociology/Anthropology	5 (23.8%)	4 (20.0%)	3 (11.1%)	4 (17.4%)	4 (16.0%)
Women's Studies	1 (33.3%)	1 (20.0%)	2 (28.6%)	1 (20.0%)	1 (20.0%)
College of Social Sciences Total	27 (16.4%)	28 (18.1%)	30 (17.5%)	36 (19.7%)	33 (18.1%)

**2006-07 SCSU WORKFORCE
BY BARGAINING UNIT**

BARGAINING UNIT	TOTAL	%
AFSCME-202 (Craft)	51	2.6%
AFSCME-203 (Service)	112	5.7%
AFSCME-206 (Clerical)	204	10.4%
AFSCME-207 (Technical)	31	1.6%
Commissioner's Plan	12	0.6%
Excluded Administrators	39	2.0%
Health Non-Professional	4	0.2%
Health Treatment Professionals	4	0.2%
Inter Faculty Organization	884	45.0%
Middle Management Association	29	1.5%
Minnesota Nurses Association	4	0.2%
Minnesota Association of Professional Employees	107	5.4%
Non-Unit	285	14.5%
Student Employees	37	1.9%
University Administrative	163	8.3%
Grand Total	1,966	100.0%

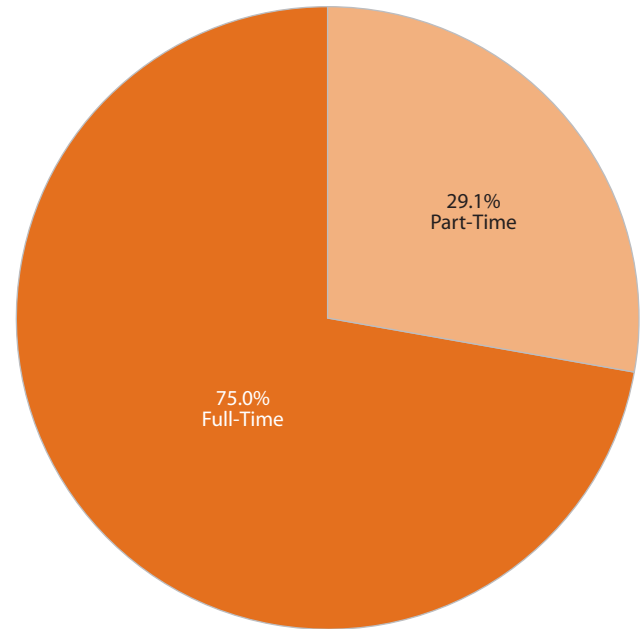
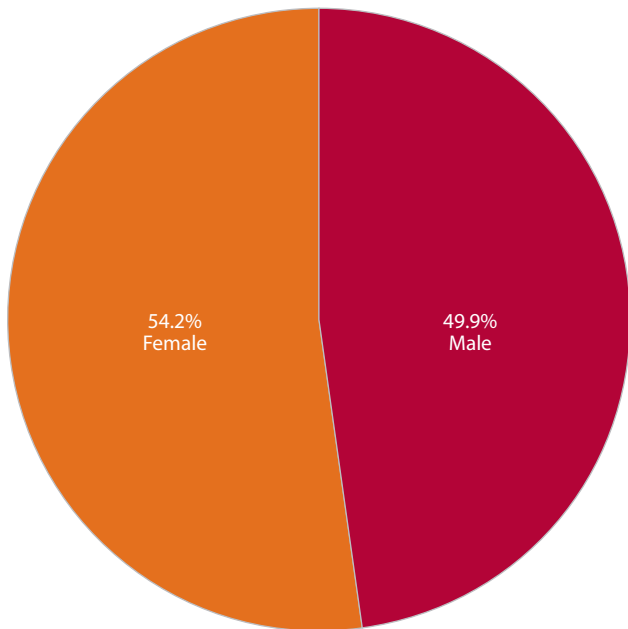
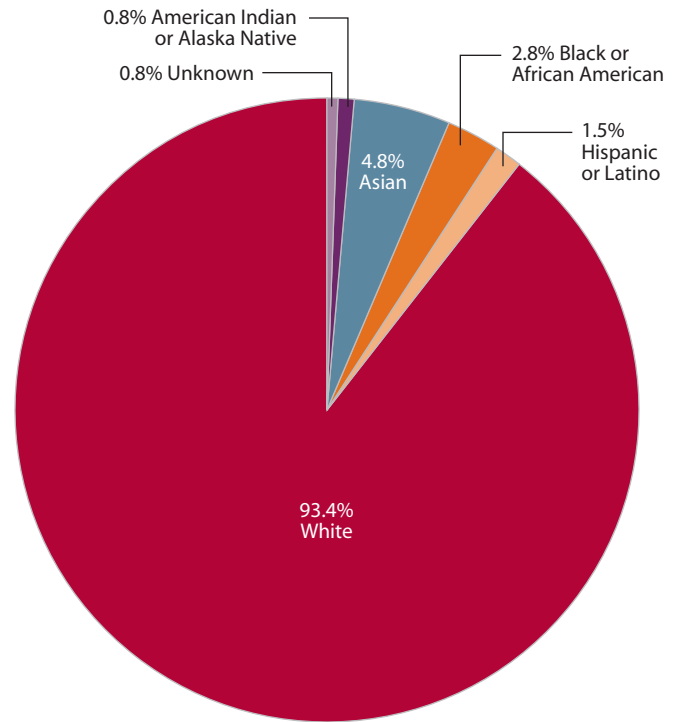
2006-07 SCSU WORKFORCE BY BARGAINING UNIT



2006-07
SCSU WORKFORCE PROFILE

	TOTAL	
	N	%
All Employees	1,966	104.1%
Full-Time	1,417	75.0%
Part-Time	549	29.1%
Female	1,024	54.2%
Male	942	49.9%
American Indian or Alaska Native	16	0.8%
Asian	90	4.8%
Black or African American	53	2.8%
Hispanic or Latino	28	1.5%
White	1,764	93.4%
Unknown	15	0.8%

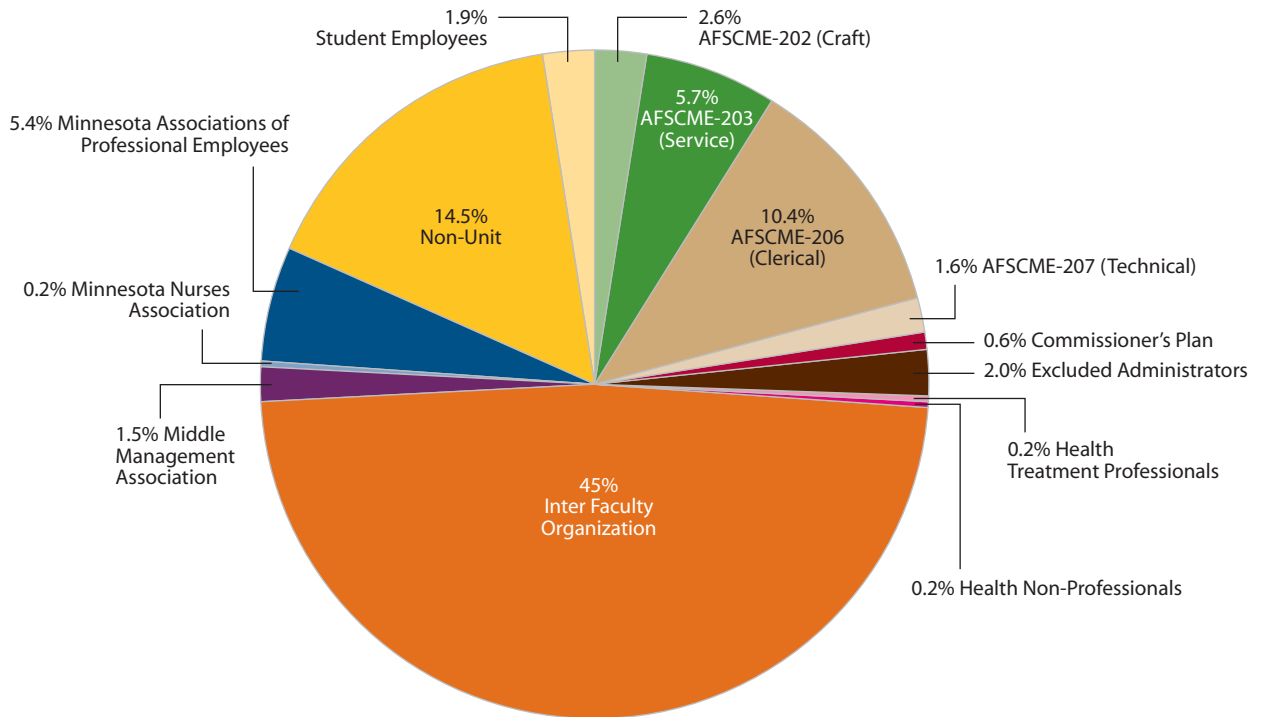
2006-07 SCSU WORKFORCE PROFILE



**2006-07 SCSU WORKFORCE
BY BARGAINING UNIT**

BARGAINING UNIT	TOTAL	%
AFSCME-202 (Craft)	51	2.6%
AFSCME-203 (Service)	112	5.7%
AFSCME-206 (Clerical)	204	10.4%
AFSCME-207 (Technical)	31	1.6%
Commissioner's Plan	12	0.6%
Excluded Administrators	39	2.0%
Health Non-Professional	4	0.2%
Health Treatment Professionals	4	0.2%
Inter Faculty Organization	884	45.0%
Middle Management Association	29	1.5%
Minnesota Nurses Association	4	0.2%
Minnesota Association of Professional Employees	107	5.4%
Non-Unit	285	14.5%
Student Employees	37	1.9%
University Administrative	163	8.3%
Grand Total	1,966	100.0%

2006-07 SCSU WORKFORCE BY BARGAINING UNIT



2006-07
SCSU WORKFORCE PROFILE

	TOTAL	
	N	%
All Employees	1,966	104.1%
Full-Time	1,417	75.0%
Part-Time	549	29.1%
Female	1,024	54.2%
Male	942	49.9%
American Indian or Alaska Native	16	0.8%
Asian	90	4.8%
Black or African American	53	2.8%
Hispanic or Latino	28	1.5%
White	1,764	93.4%
Unknown	15	0.8%

2006-07 SCSU WORKFORCE PROFILE

