

Overall Direction of Graduate School AY 11-12

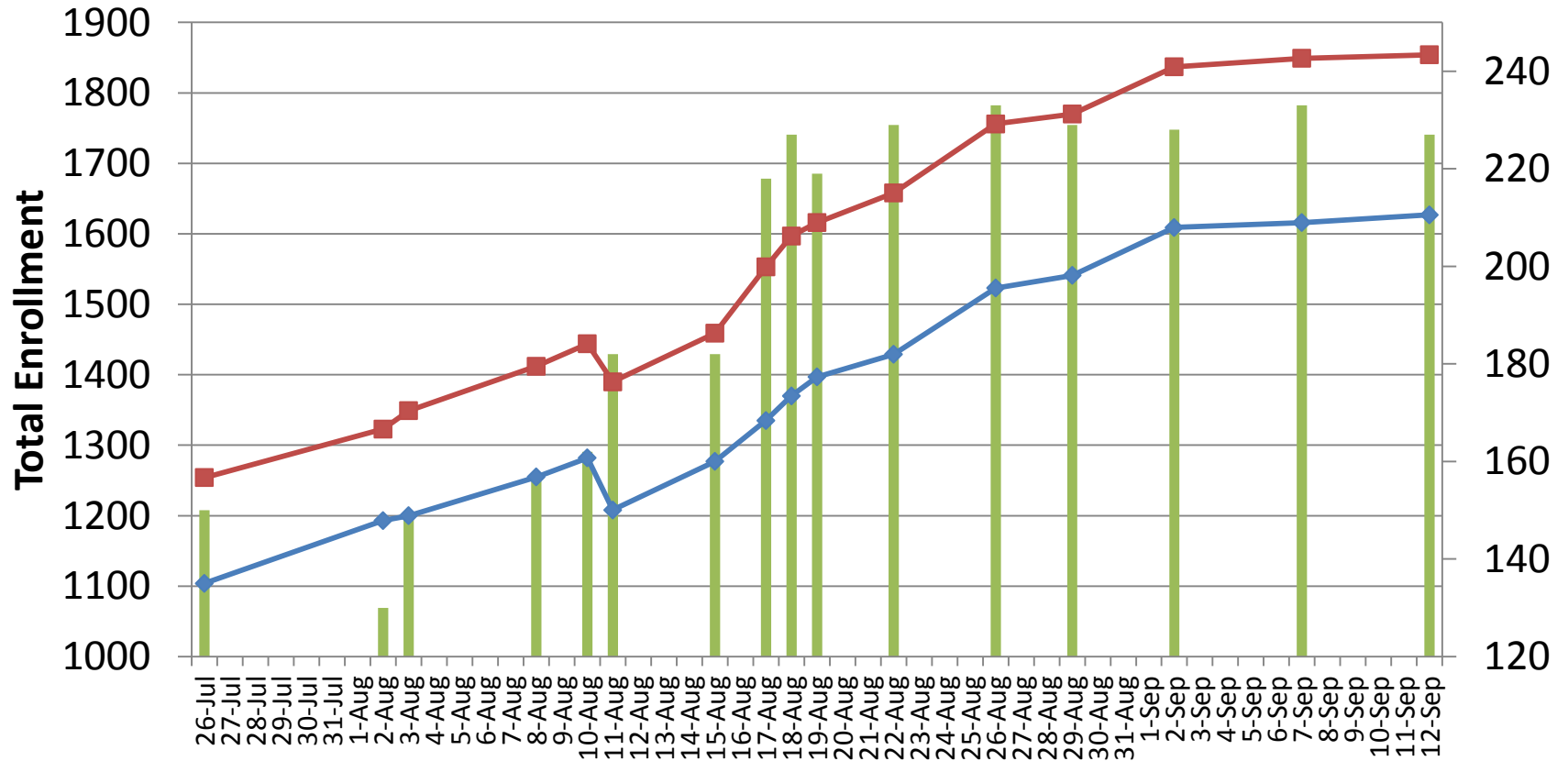
- Developed a GS work plan
- Graduate Education planning process
 - Will insist on inclusiveness and clear process.
 - Your plan, please participate
- Technology development
 - Hobsons and DARS
 - Data for programs (enrollment, retention, etc.)
- ETD development
 - BEPress infrastructure has been developed
 - Need to develop process
 - Need to develop support structures needed (technology, writing, etc.)

- Reorganization and graduate education
 - Assist programs in adjusting and planning
- Policy changes
 - Faculty group identified most GS policies are out of date.
 - New HLC guidelines and expectations
 - Start with
 - Graduate academic dishonesty policy/process
 - GRE Policy
 - Committee makeup policy

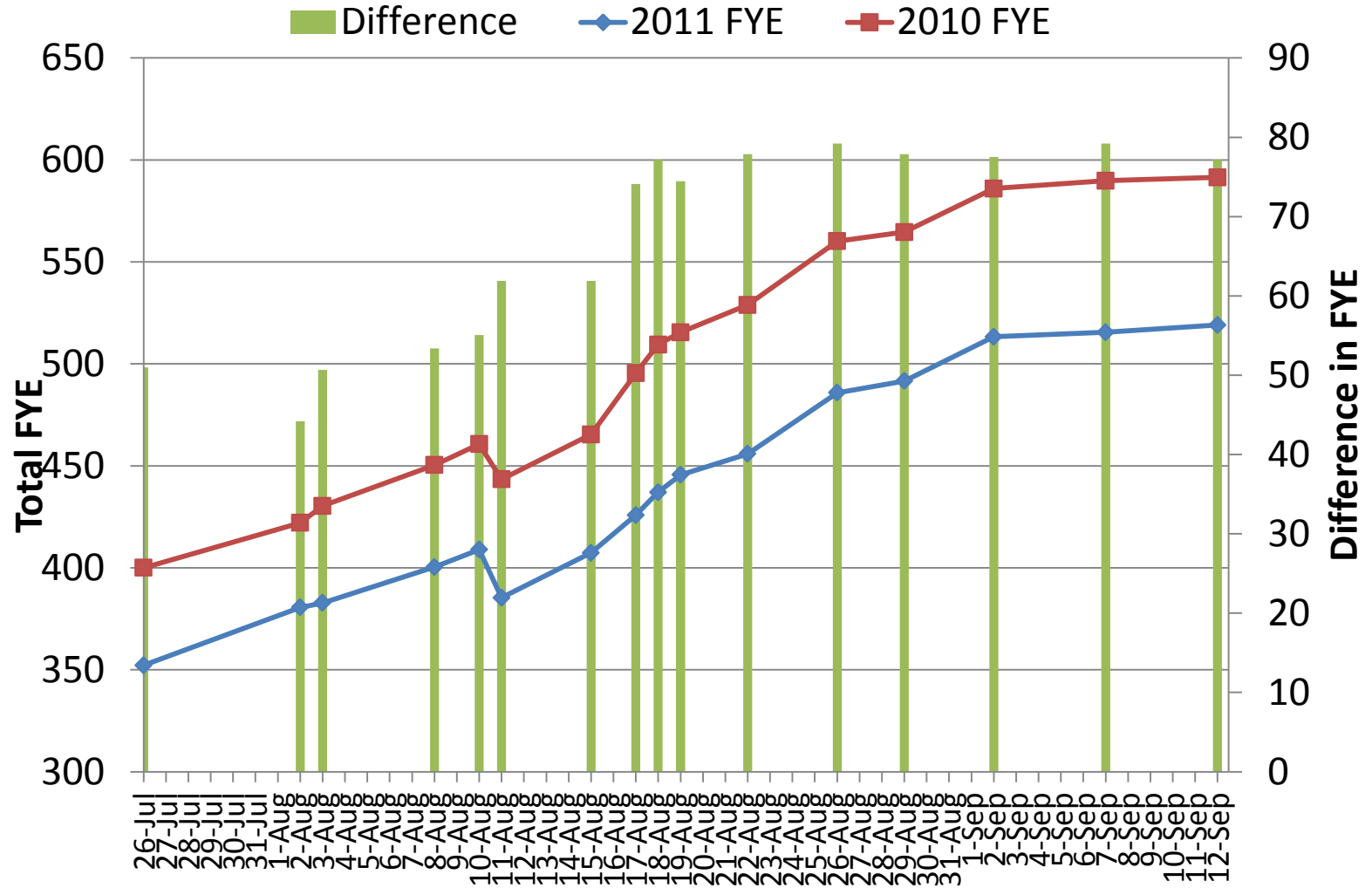
Graduate Studies Enrollment Update

Fall 2011 Head Count

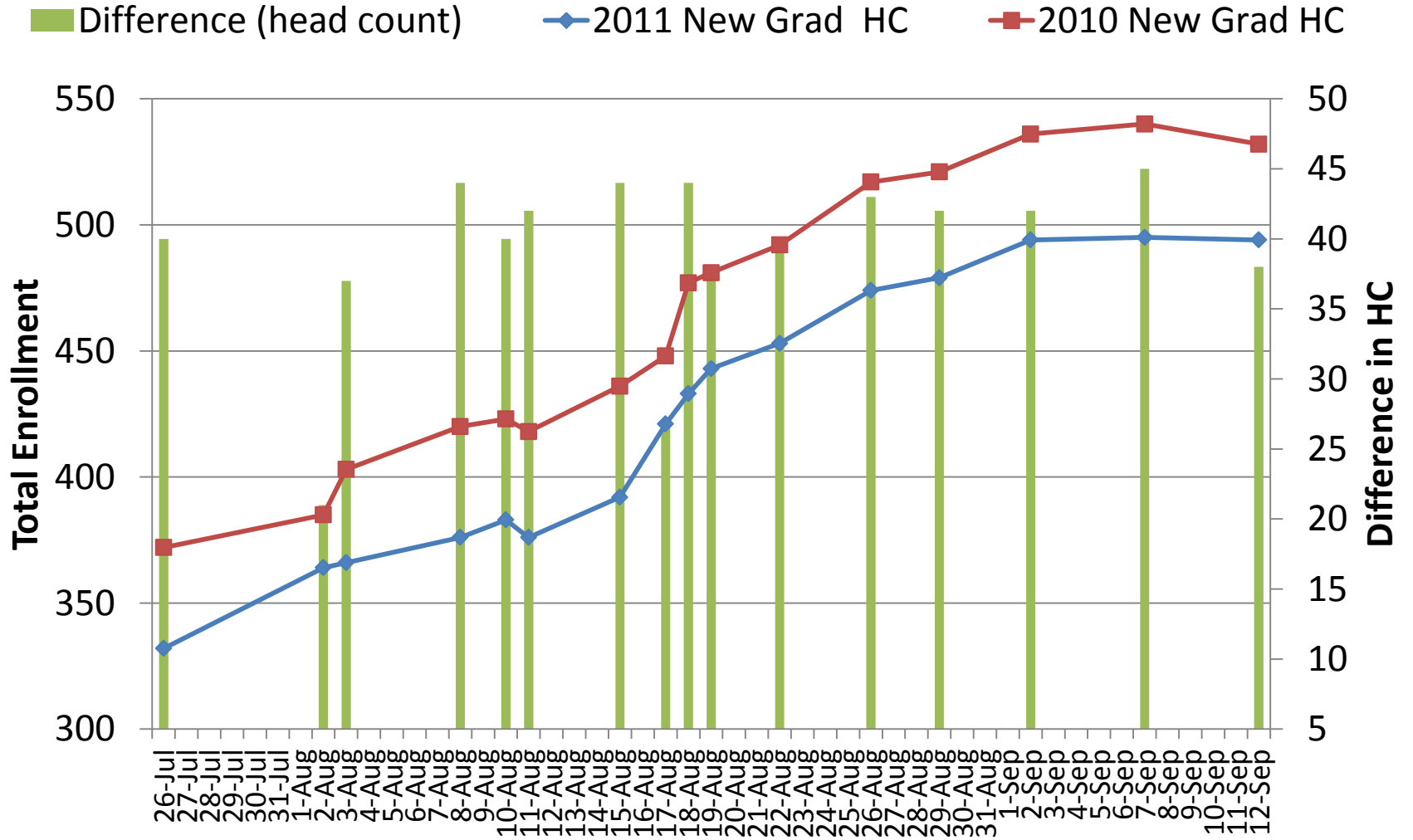
■ Difference (head count) ◆ 2011 Total Head Count ■ 2010 Total Head Count



Total FYE (Graduate Studies)

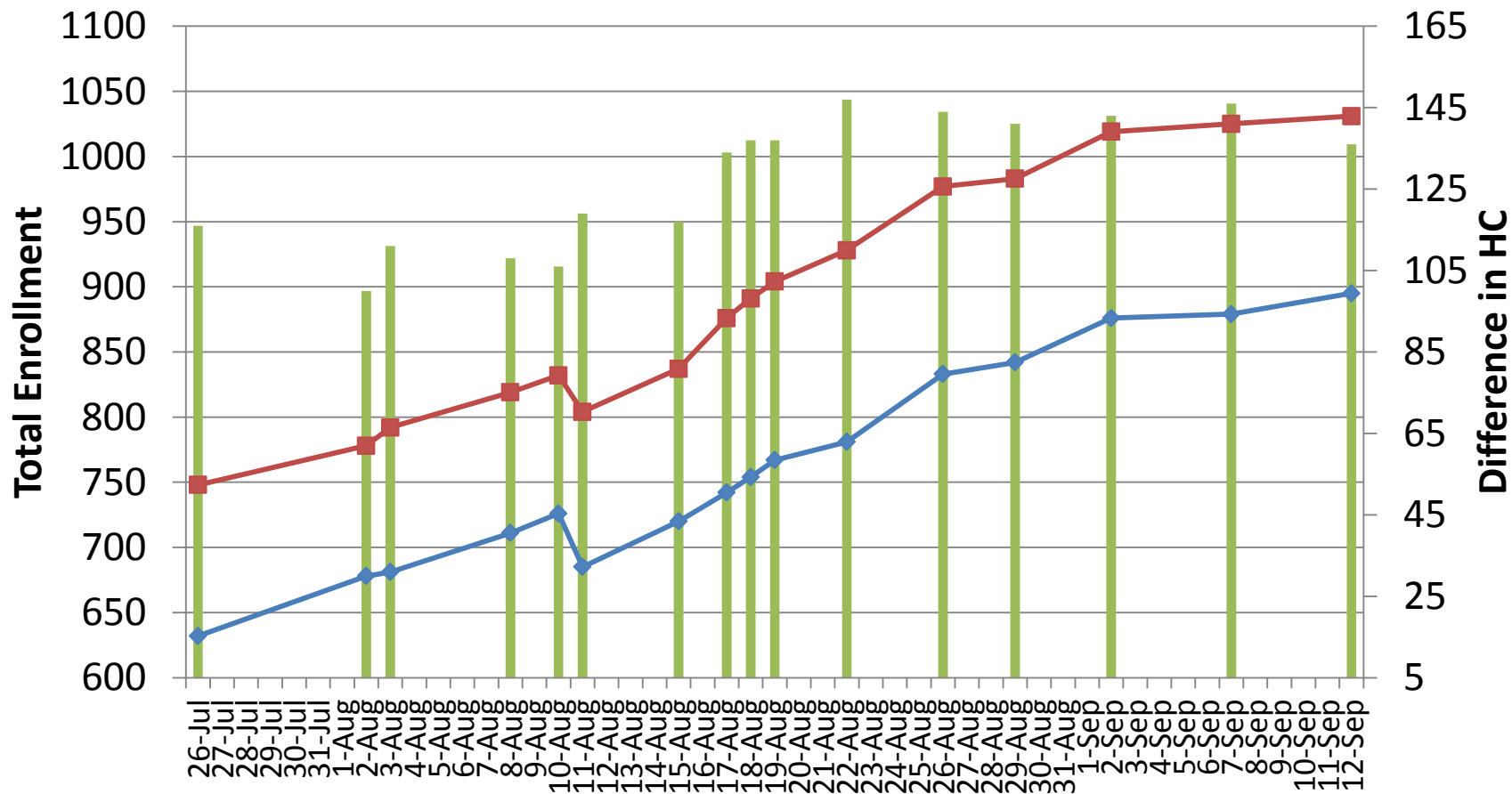


New Entering HC

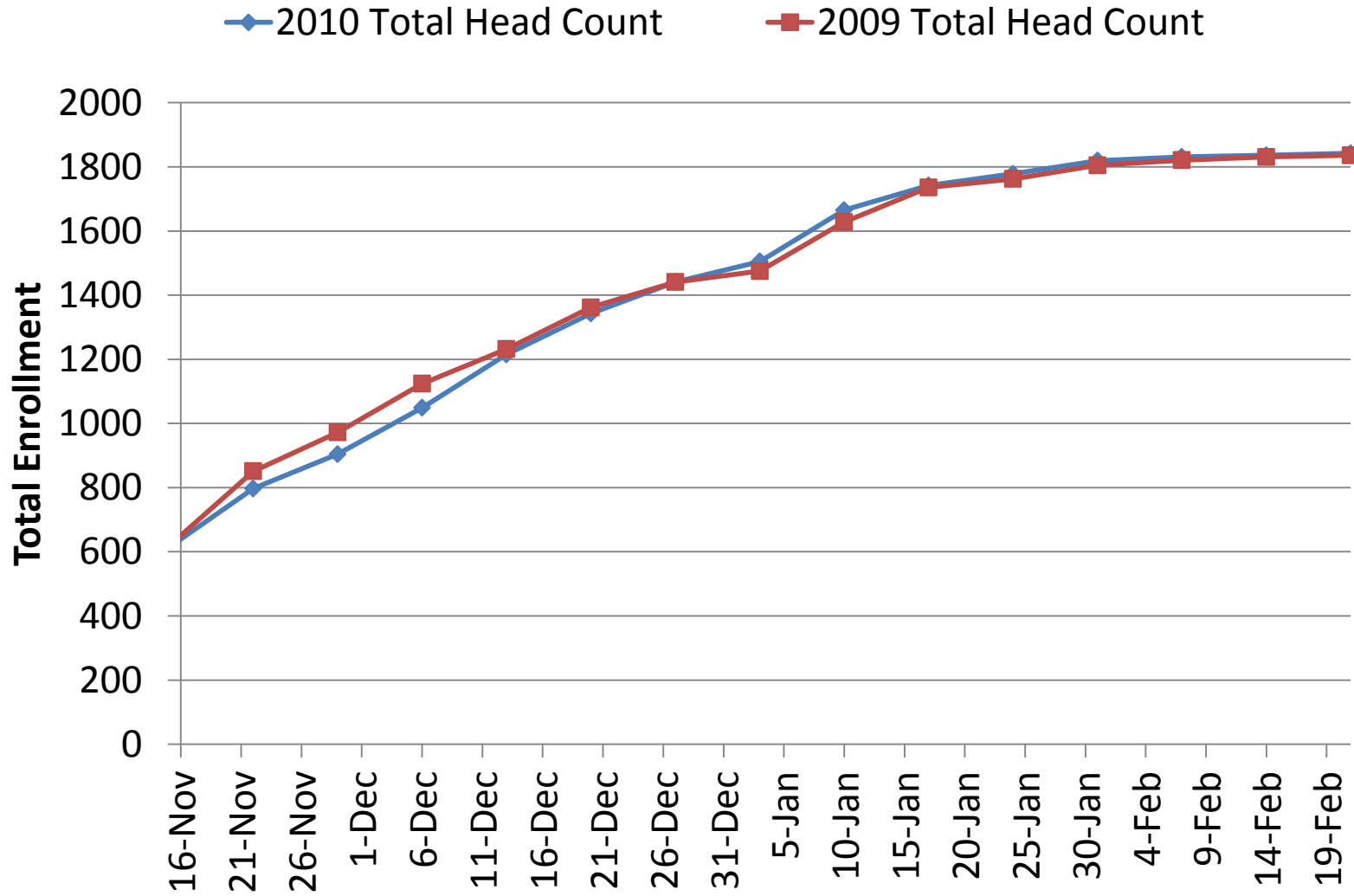


Returning HC

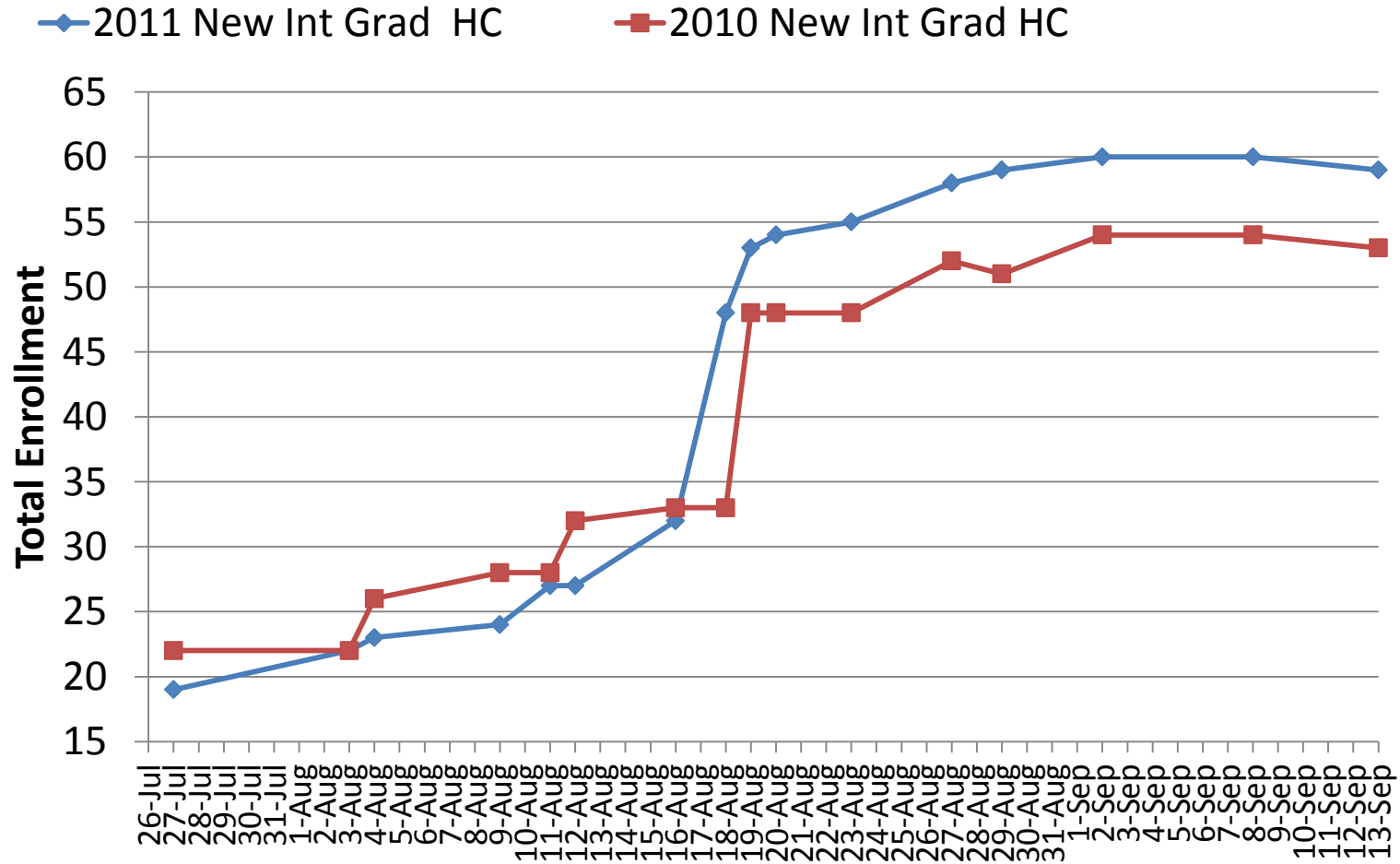
■ Difference (head count)
 ◆ 2011 Returning Grad HC
 ■ 2010 Returning Grad HC



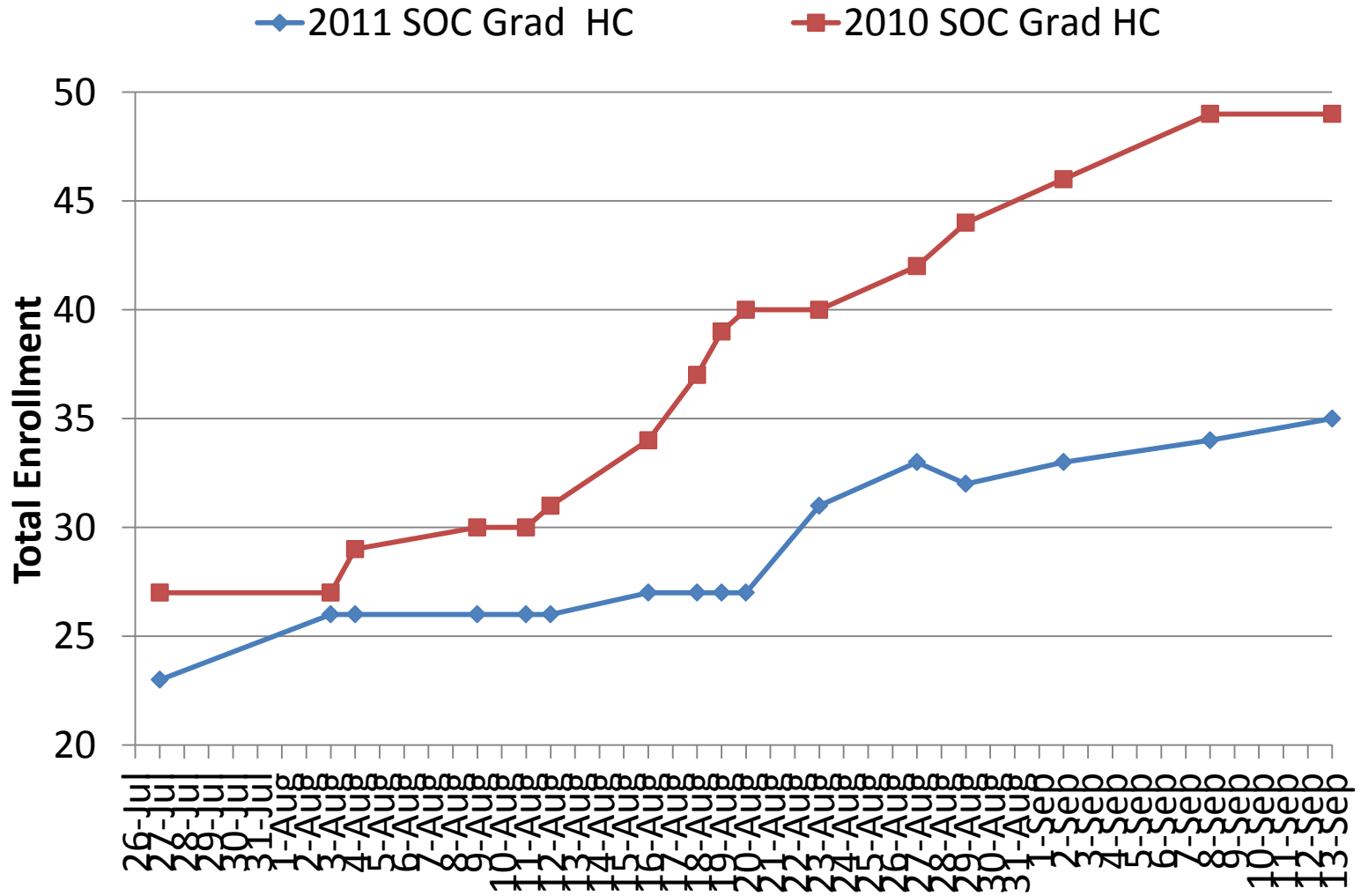
Enrollment Totals HC (Spring Comparison)



New Entering International HC



New Entering SOC HC



Response by Graduate Studies

- Supplied lists of students that were enrolled in the Spring but not in the Fall.
- Invested in a wide range of recruitment efforts
 - Peterson's online
 - Hotcourses.com web portals
 - Active recruitment at graduate fairs
 - Think Education USA
 - International recruiters
- Continued to develop Hobson's
 - Unofficial transcripts for admission decisions
 - Track applicants and customize communications
- Development of a CGS enrollment management plan
- Beginning to meet with programs to discuss how we can assist with marketing and recruitment.