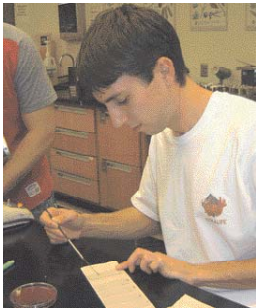




Biological Sciences offers a number of undergraduate and graduate degree programs in various sub-disciplines of biology, in addition to preparing students for entry into professional degree programs such as medicine, dentistry and physical therapy.



Talented faculty and staff, dedicated to teaching and learning by doing, provide an active learning environment for students that includes laboratory and field experiences. Independent research projects guided by faculty mentors are part of the academic curriculum.

## Department of Biological Sciences

720 Fourth Avenue South  
262 Robert H. Wick Science Bldg.  
St Cloud, MN 56301-4498  
[www.stcloudstate.edu/biology](http://www.stcloudstate.edu/biology)  
[biology@stcloudstate.edu](mailto:biology@stcloudstate.edu)

### Office of Admissions

115 Administrative Services Building  
St. Cloud State University  
720 Fourth Avenue South  
St. Cloud, MN 56301-4498  
Phone: (320) 308-2244  
[www.stcloudstate.edu/admissions](http://www.stcloudstate.edu/admissions)

### Office of Scholarships and Financial Aid

[financialaid@stcloudstate.edu](mailto:financialaid@stcloudstate.edu)  
[www.stcloudstate.edu/financialaid](http://www.stcloudstate.edu/financialaid)

### Office of Residential Life

[reslife@stcloudstate.edu](mailto:reslife@stcloudstate.edu)  
[www.stcloudstate.edu/reslife](http://www.stcloudstate.edu/reslife)



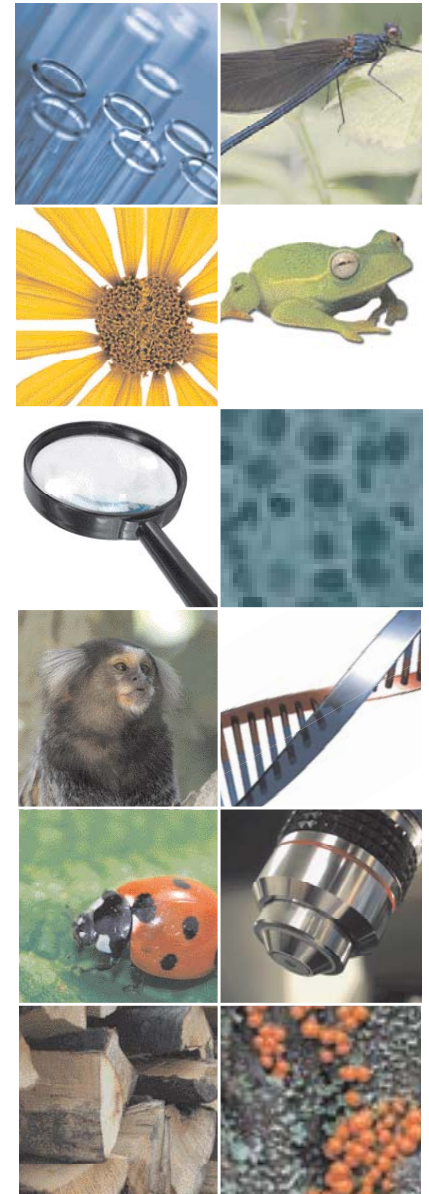
TTY: 1.800.627.3529

SCSU is an affirmative action/equal opportunity educator and employer. This material can be made available in an alternative format; Contact the Applied Research and Development Center, 320.308.3909.

Shantell Job, designer; Irene Voht, project manager; Dale Williams, director, SCSU College of Science and Engineering's Applied Research and Development Center, 2008.

# BIOLOGICAL SCIENCES

# BIOLOGICAL



COLLEGE OF SCIENCE AND ENGINEERING  
ST. CLOUD STATE UNIVERSITY

# Programs of Study

## Bachelor of Science Majors

- General Biology
- Science Teaching, Life Science Emphasis
- Biotechnology
- Biomedical Sciences
- Ecology & Field Biology
  - Ecology & Natural Resources Emphasis
  - Wildlife Emphasis

## Bachelor of Science Minor

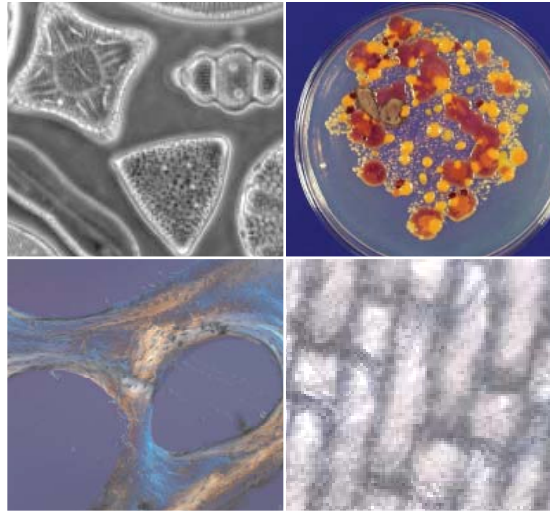
- Biology

## Bachelor of Elective Studies Major

- Biology

## Pre-Professional Programs

- Pre-Agriculture
- Pre-Chiropractic
- Pre-Cytotechnology
- Pre-Dentistry
- Pre-Forestry
- Pre-Horticulture
- Pre-Medicine
- Pre-Mortuary Science
- Pre-Occupational Therapy
- Pre-Optometry
- Pre-Physical Therapy
- Pre-Podiatry
- Pre-Veterinary Medicine
- Pre-Pharmacy



## Undergraduate Research

Participate in faculty research for a semester, a year or more.

- Publish a research paper.
- Participate in field-based or laboratory-based research.
- Present your research and compete to win a research award at the annual the Student Research Colloquium.

If interested, contact a faculty member in your area of interest to discuss your options. To learn about the research interests of the faculty, go to the faculty web pages at [www.stcloudstate.edu/biology/facultystaff.asp](http://www.stcloudstate.edu/biology/facultystaff.asp)

---

St. Cloud State University also offers a nursing program and three health sciences programs: Medical Technology, Nuclear Medicine Technology, and Radiologic Technology. For information on nursing, please go to <http://www.stcloudstate.edu/nursing/>. For information on health sciences please go to <http://www.stcloudstate.edu/healthsciences/>.

## Biology Department Highlights

- Dozens of students accepted into internships each year. These may be in locations as far away as Australia or Honduras or as near as the Mayo Clinic.
- Talented faculty conducting award-winning research.
- Laboratory and field experience and independent research projects guided by faculty members are integrated into the academic curriculum.
- Six biology-related student organizations.
- Departmental scholarships.

## Facilities

- Greenhouse
- Herbarium
- Microbiology Laboratory
- Cell & Tissue Culture Laboratory
- Phytoplankton Laboratory
- Laboratory for Reproduction Research & Endocrine Analysis
- Aquatic Toxicology Laboratory
- DNA Sequencing & Analysis Center
- Yeast Molecular Genetics Lab
- Histology Laboratory
- Center for Microscopic Imaging & Analysis

