

ST. CLOUD STATE UNIVERSITY CAMPUS MAP

Visit www.StCloudState.edu/campusmap/

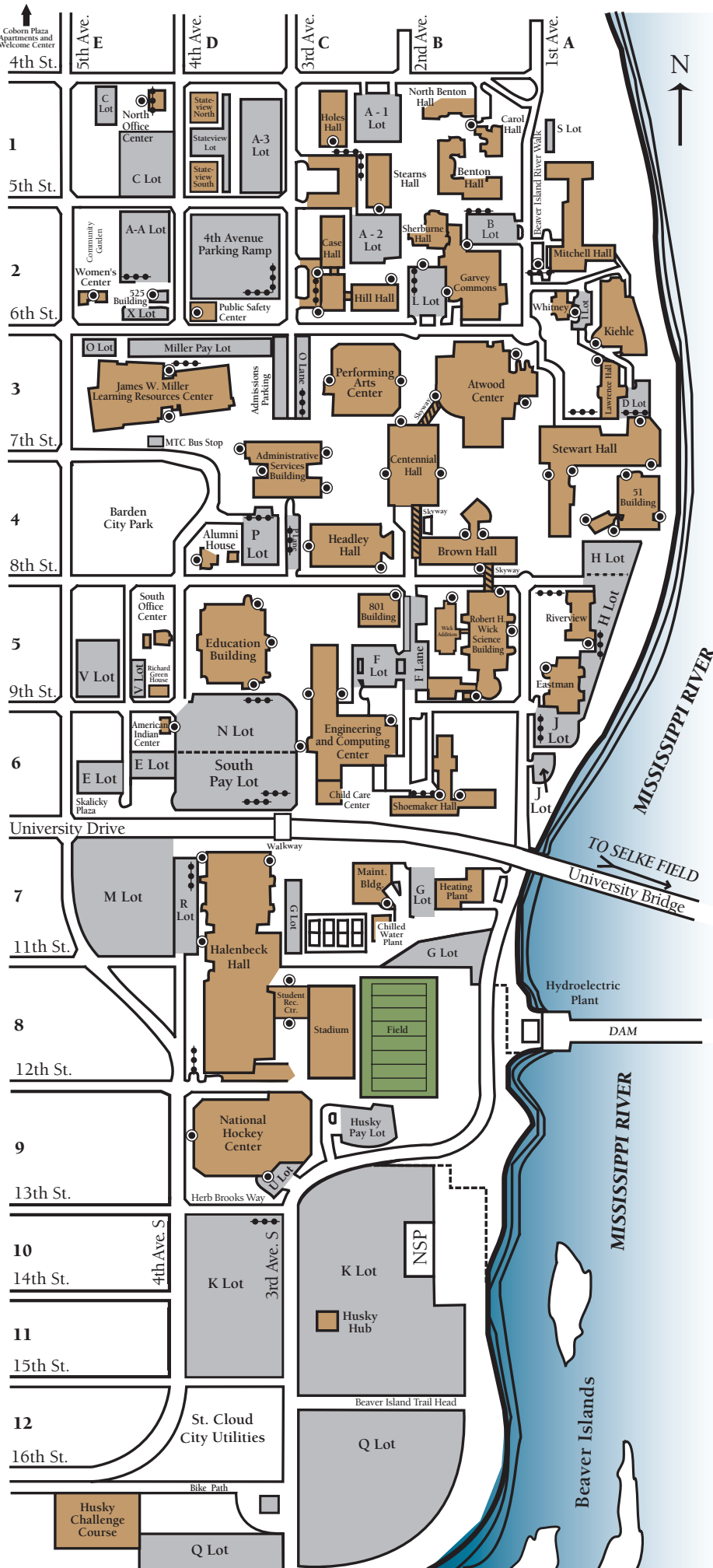
TO REACH THE CAMPUS

- **From Interstate 94:** Take Exit 171. Drive north into St. Cloud on Stearns County Road 75. At 22nd Street South turn east. At Clearwater Road turn north. Follow the signs to campus.
- **From U.S. Highway 10:** Exit west on Minnesota Highway 23. Cross the Mississippi River on the Granite City Crossing Bridge. At Fifth Avenue turn south. Follow the banners to campus.
- **From the southwest (Minnesota Highways 15 and 23 and Stearns County Road 75):** All routes link with Division Street. Turn south at Fifth Avenue. Follow the banners to campus.
- **From the east (Minnesota Highway 23):** Follow Minnesota Highway 23 across the Mississippi River. At Fifth Avenue turn south. Follow the banners to campus.

LEGEND

AS	Administrative Services, 720 4th Ave S	C4
AH	Alumni House, 724 4th Ave S	D4
AIC	American Indian Center, 901 4th Ave S	E6
AMC	Atwood Memorial Center, 651 1st Ave S	B3
BTH	Benton Hall, 445 1st Ave S	B1
BH	Brown Hall, 151 8th St S	B4
BG	Buildings and Grounds	E1
CPA	Coborn Plaza Apartments	
CPW	Coborn Plaza Welcome Center	
CRH	Carol Hall, 425 1st Ave S	B1
CSH	Case Hall, 550 3rd Ave S	C2
CH	Centennial Hall, 201 8th St S (Husky Bookstore)	B4
ECC	Engineering & Computing Center, 910 3rd Ave S	C6
EH	Eastman Hall, 850 1st Ave S	A5
EB	Education Building, 840 4th Ave S	D5
FLD	Field	B8
GC	Garvey Commons, 577 1st Ave S	B2
HaH	Halenbeck Hall, 1000 4th Ave S	D7
HH	Headley Hall, 225 8th St S	C4
HiHH	Health Center, 550 3rd Ave S	C2
HP	Heating Plant, 1025 1st Ave S	B7
HiH	Hill Hall, 550 3rd Ave S	C2
HoH	Holes Hall, 400 3rd Ave S	C1
Hub	Husky Hub, 1420 3rd Ave S	C10
HS	Husky Stadium, 1111 3rd Ave S	C8
MC	James W. Miller Learning Resources Center (library) 400 6th St S	D3
KVAC	Kiehle Visual Arts Center, 580 1st Ave S	A2
LH	Lawrence Hall, 650 1st Ave S	A3
MB	Maintenance Building, 211 11th St S	C7
MH	Mitchell Hall, 566 1st Ave S	A2
NHC	National Hockey Center, 1204 4th Ave S	D9
NOC	North Office Center, 401 4th Ave S	E1
NSP	NSP Building	B10
PA	Performing Arts Center, 620 3rd Ave S	C3
PR	Parking Ramp, 516 4th Ave So	D2
PSC	Public Safety Center, 526 4th Ave So	D2
RGH	Richard Green House, 827 4th Ave So	E5
	Ritsche Auditorium (Stewart Hall)	A4
R	Riverview, 826 1st St S	A5
SBH	Sherburne Hall, 525 1st Ave S	B2
SMH	Shoemaker Hall, 915 1st Ave S	B6
SOC	South Office Center, 809 4th Ave S	E5
SVN	Stateview North, 410 4th Ave S	D1
SVS	Stateview South, 422 4th Ave S	D1
STH	Stearns Hall, 410 3rd Ave S	C1
SH	Stewart Hall (Ritsche Auditorium), 702 1st Ave S	A4
SRC	Student Recreation Center, 1111 3rd Ave S	C8
WH	Whitney House, 576 1st Ave S	A2
WC	Women's Center, 520 5th Ave S	E2
WSB	Robert H. Wick Science Building (Planetarium), 825 1st Ave S	B5
801B	801 Building, 801 2nd Ave S	C5
51B	51 Building, 51 8th St S	A4
525	525 Building, 525 4th Ave S	E2

Handicapped Parking
Wheelchair Accessible Entrance
Skyway





ST. CLOUD STATE UNIVERSITY OFF-CAMPUS SITES MAP

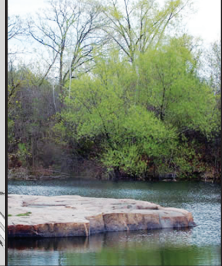
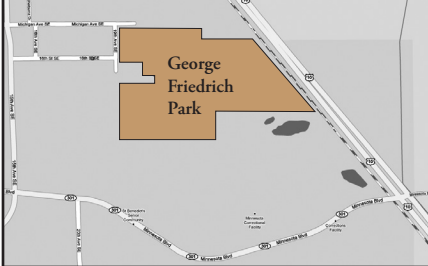
Visit www.StCloudState.edu/campusmap/



COBORN PLAZA APARTMENTS AND WELCOME CENTER

Fifth Avenue South and Ramsey Place

St. Cloud State leases a 453-student housing complex and 12,000-square-foot Welcome Center in Coborn Plaza. Located a block north of campus, Coborn Plaza honors the Coborn family whose grocery chain had a store on the site. Also, under construction is 20,000 square-foot of retail. The Welcome Center and housing complex are expected to open August 2010.



GEORGE FRIEDRICH PARK

East end of University Drive

Purchased in 1934, this wooded property was home to granite quarries and then an outdoor swimming facility. It was closed to the public in the mid-1970s. It has water-filled quarries and scenic trails. Trees include native aspen, red cedar, oak and ash and introduced red pine and white pine. Access is from the east end of University Drive. The tract is bounded by Minnesota Correctional Facility-St. Cloud property on the south and U.S. Highway 10 on the east. A planned extension of University Drive is expected to skirt north of the park.



MINNESOTA HIGHWAY SAFETY AND RESEARCH CENTER

1805 U.S. Highway 10

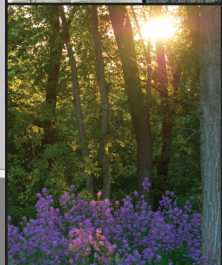
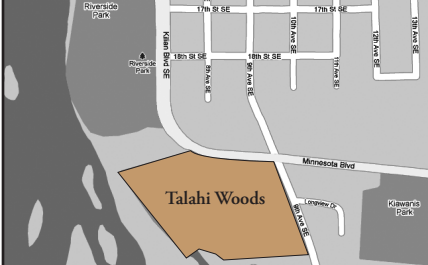
Located on 160 acres east of campus, the center's three miles of paved track and two miles of gravel track host year-round vehicle training. Offerings include driving skills courses for law enforcement personnel and construction truck operators. The center is north of Sand Prairie Wildlife Management Area on U.S. Highway 10.



SELKE FIELD

1000 block of University Drive

The former site of St. Cloud State football games and track meets is now the home of Husky softball. Youth soccer teams, club rugby teams and the like use the irrigated turf field. Named for former President George Selke, the 17-acre property is famed for its massive granite walls. It is located five blocks east of campus on University Drive.



TALAH WOODS

Minnesota Boulevard and Ninth Avenue Southeast

Talahi Woods is on the Mississippi River south of Riverside Park. The elevated woody tract offers views of the Beaver Islands. It is fenced on its landward side, which abuts Killian Boulevard/Minnesota Drive/9th Avenue SE. Its trails are used by students and the public for casual recreation, especially cross country skiing. Faculty sometimes use it for class activities.



TWIN CITIES GRADUATE CENTER

6401 Sycamore Court N., Maple Grove, MN 55369

St. Cloud State leases space in the Dex Building in Maple Grove for professional-level graduate classes and programs. Located near I-494 and Bass Lake Road, the Twin Cities Graduate Center's offerings include courses in educational counseling, business management, and regulatory affairs and services.