



Home of the Huskies

St. Cloud State University HUSKY ATHLETICS

Athletic Media Relations - Volleyball Update

Contact: Celest Stang at 320-308-2141 or crstang@stcloudstate.edu



2007 SCSU VOLLEYBALL NEWS

Final Release Date: December 11, 2007



Season Complete

The 2007 St. Cloud State University volleyball team completed the season 10-21 overall with a 2-10 mark in the final year of the North Central Conference's year of existence.

2007 SCSU Results

Date	Opponent	Time/Result
8/24	vs. Saginaw Valley #	W, 3-0
8/24	vs. Northwood #	L, 0-3
8/25	vs. Colorado Mines #	W, 4-1
8/25	vs. Grand Valley State #	L, 0-3
8/28	UPPER IOWA	W, 3-1
8/30	at Lewis University	L, 0-3
8/31	vs. St. Joseph &	W, 3-1
8/31	vs. St. Francis &	W, 3-0
9/1	vs. Southern Indiana &	L, 2-3
9/1	vs. UW-Parkside &	L, 0-3
9/4	at Concordia-St. Paul	L, 1-3
9/11	BEMIDJI STATE	L, 1-3
9/15	at Augustana College*	L, 0-3
9/18	WINONA STATE	W, 3-1
9/21	at South Dakota*	L, 0-3
9/22	at Nebraska-Omaha*	L, 1-3
9/25	at Minnesota, Crookston	W, 1-3
10/2	at SW Minnesota State	L, 0-3
10/5	NORTH DAKOTA*	W, 3-0
10/6	MINNESOTA STATE*	L, 0-3
10/9	at Bemidji State	L, 2-3
10/13	at Minnesota Duluth*	L, 0-3
10/16	VALLEY CITY STATE	W, 3-0
10/20	at North Dakota*	W, 3-2
10/23	at Winona State	L, 2-3
10/25	MSU, MOORHEAD	L, 2-3
10/27	MINNESOTA DULUTH*	L, 0-3
11/2	at Minnesota State*	L, 0-3
11/3	NEBRASKA-OMAHA*	L, 0-3
11/9	SOUTH DAKOTA*	L, 0-3
11/10	AUGUSTANA COLLEGE*	L, 1-3

Ferris State Tournament & Flyer Festival (Lewis University)

* North Central Conference Match

(all games are listed as Central Time)

For complete ticket information, please call 1-877-SCSUTIX or 320-308-2137.



SCSU SEASON COMPLETE, GOOD BYE NCC: The 2007 Husky volleyball squad suffered a 3-1 match loss to North Central Conference opponent No. 17 Augustana College on Saturday, Nov. 10, to complete its 2007 season in Halenbeck Hall and also complete SCSU's volleyball existence in the NCC. SCSU finished the season with a 10-21 overall record and a 2-10 mark in the NCC, good for a sixth place standing. St. Cloud State will be entering the Northern Sun Intercollegiate Conference during the next 2008-09 school year.



2007 RECORD: SCSU volleyball was 10-21 overall in 2007 and 2-10 in the NCC. The Huskies are now 661-539 all-time since the inception of the program in 1969.

HOME SWEET HOME: The Huskies were 4-7 overall at home in 2007.

ON THE ROAD: SCSU posted a 2-10 overall road record in 2007.

LIVE STATS: SCSU volleyball fans enjoyed live stats on the web for all Husky home matches in 2007. Live Stats were viewed by going to the Husky athletics volleyball home page at www.stcloudstate.edu/athletics/volleyball and following the directions.

WATCH HOME VOLLEYBALL ON THE WEB: Husky fans were able to watch live video streaming of select SCSU home events thru a pay-per-view partnership with B2 Networks. Complete information on how to watch the volleyball matches on the web was available at the Husky Home Page at www.stcloudstate.edu/athletics.



Isaacson

THREE HUSKIES NAMED TO NCC HONOR ROLL: The North Central Conference Commissioner's Academic Honor Roll for volleyball was compiled and 43 student-athletes achieved the honor. St. Cloud State University had three players among the 2007 list.

SCSU's junior Kelly Lynn Isaacson (Eden Prairie), red-shirt first year Alecia Lunde (East Bethel) and junior Andreana Pieper (Williams) were the Huskies honored this year. Isaacson is a mass communications major, Lunde a pre business major and Pieper is majoring in elementary education. Isaacson and Pieper are both two-time honor roll student-athletes.

To qualify student-athletes must have a minimum 3.20 grade point average, have completed at least two semesters at their current school

and have competed against outside competition. This was the third year that the NCC had released an NCC Commissioner's Academic Honor Roll.



Pieper

PIEPER GAINS NCC ACADEMIC HONOR: SCSU's Andreana Pieper (Williams) was named to the 2007 Volleyball All-North Central Conference Academic Team for the first time in her career. Twelve student-athletes from the NCC were selected to the academic team by a vote of the league's sports information directors. The select group had a combined grade point average of 3.73.



Baldwin

TWO HUSKIES NAMED ALL-NCC HONORABLE MENTION: Husky juniors Emily Baldwin (Savage) and Andreana Pieper (Williams) were both named to the 2007 All-North Central Conference Honorable Mention team. Throughout the season, Pieper led the NCC in the digs per game category. The junior libero completed the season ranking first in the

league with 5.95 digs per game. In 114 games played in a Husky uniform this season, Pieper tallied 678 digs, which sets a new SCSU school record for most digs in a season. The previous record of 458 digs in a season was set by former Huskies Krista Hartung in 1995 and tied by Megan Hardy in 2004.

Baldwin was named to the squad for the first time in her career as well after finishing the season ranked second in the league with 4.22 kills per game. Originally from Savage, Minn., Baldwin led the Huskies with 445 total kills in 106 games played in 2007. The junior outside totaled a team second-best 365 digs (3.44 dpg) and a .954 reception percentage on the season. She has now played in 177 games in a Husky uniform after transferring from Southwest Minnesota State in the spring of 2006.



Mickow

SCSU HEAD COACH PATRICIA MICKOW: Patricia Mickow completed her fifth season at St. Cloud State University during the 2007 stint. After five years at SCSU, Mickow owns a 56-95 record and in her college coaching career of 19 seasons, Mickow owns a 299-355 record.

www.StCloudState.edu/Athletics/Volleyball



ASSISTANT COACHING STAFF:



ASSISTING IN 2007: Aaron Nelson was appointed the assistant volleyball coach in the spring of 2007. An Austin, Minn. native, Nelson attended nearby Sauk Rapids High School. Most recently, he has been an 'A' head coach for the Nebraska Elite Junior Olympic Volleyball program in Omaha, Nebraska. He brings 15 years of volleyball coaching experience to the Huskies. Nelson was a volunteer assistant coach with the St. Cloud State volleyball program in 1998, 1999, and 2000, with then head coach Dianne Glowatzke. Nelson earned both a bachelor's in 1996 and master's degree in 2001 from St. Cloud State.

Nelson

COACH KIMBERLY BOSTROM: Kimberly Bostrom joined the Husky coaching staff in 2007 for the first time as a graduate assistant coach. Originally from Lino Lakes, Minn., Bostrom is a 2001 graduate from Centennial High School in Circle Pines, Minn. Bostrom went on to play collegiate volleyball at South Dakota State University from 2001-2004. The two-time team captain was fortunate enough to experience SDSU's move from Division II to Division I, and during her senior season in 2004, Bostrom was named to the Division I All-Independent Conference team. Bostrom currently resides in St. Cloud and is pursuing a master's degree in sport management at St. Cloud State University.



Bostrom



COACH DANIELLE KOHUT: Danielle Kohut returned to the Husky volleyball program as a volunteer assistant coach in 2007. Kohut was a defensive specialist and a setter on the Husky volleyball squad from 2003-2005 under the helm of current head coach Patricia Mickow. The Hafford, Sask., native began her collegiate volleyball career at Williston State in 2001 and played there for two seasons before transferring to SCSU in 2003. A 2007 graduate of St. Cloud State, Kohut is now a physical therapist assistant and resides in St. Cloud.

Kohut



St. Cloud State University Quick Facts

Location:St. Cloud, Minn.
Founded:..... 1869
Enrollment:..... 16,000
President:.....Dr. Earl H. Potter III
Director of Athletics.....Dr. Morris Kurtz
National AffiliationNCAA Division II
Conference.....North Central Conference
Nickname.....Huskies
Colors Cardinal Red and Black
Gymnasium.....Halenbeck Hall
First Year of Volleyball 1969
All-Time Record 661-539 (.546)
Head Coach Patricia Mickow (5th Season)
Career Record 299-355 (19th Season)
SCSU Record..... 56-95 (5th Season)
Mickow's Phone 320-308-3140
Mickow's Email pamickow@stcloudstate.edu
Assistant Coach.....Aaron Nelson (First Season)
Nelson's Email ajnelson@stcloudstate.edu
Returning Players0 setters, 2 DS, 3 hitters, 2 middle hitters
Players Lost..... 1 setter, 2 DS, 4 hitters, 3 middle hitters
2006 Record..... 8-22 (1-11 NCC; T-6th)

2007 SCSU Volleyball Roster

Table with 6 columns: No., Name, Yr., Ht, Pos, Hometown. Lists 20 players including Kiersten Mormann, Kelly Lynn Isaacson, Andrea Pieper, etc.

Alphabetical Roster

- Emily Baldwin
Alyssa Buysse
Amy Gatz
Kelly Lynn Isaacson
Kala Jensen
Alecia Lunde
Kiersten Mormann
Andrea Pieper
Shanna Seidel
Ashley Shields
RaeAnne Stanley
Kayla Tschida
Jennifer Waterman

Pronunciation Guide

- Mickow Mick-oh
Buysse Buy-zee
Kala K-a-lah
Alecia Al-ee-sha
Andrea Andr-e-nah
Pieper Pipe-er
Seidel S-eye-del
Tschida Ch-ee-dah

NEED INFO?

For information about SCSU Volleyball, please contact the St. Cloud State Athletic Media Relations Office at 320-308-2141. The volleyball contact at SCSU for 2007 is Celest Stang You can contact her via email at crstang@stcloudstate.edu

IMPORTANT NUMBERS:

SCSU Ticket Office: 320-308-2137
SCSU AMR Office: 320-308-2141

WEBSITES:

To obtain complete information about the North Central Conference, please go to the NCC Home Page at www.northcentralconference.org

To obtain complete information about SCSU volleyball this season, please go to the Husky Home Page at www.stcloudstate.edu/athletics





MORE NEWS AND NOTES...



Stanley

SENIOR SALUTE TO RAEANNE STANLEY:

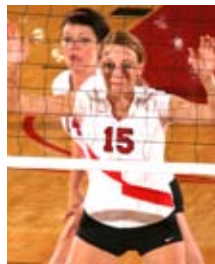
St. Cloud State University says good bye to fifth-year senior RaeAnne Stanley. Stanley played in 192 games as a Husky. She totaled 198 kills, 22 set assists, 11 serving aces and 158 digs during her career. After making the move to the middle blocking position this season, Stanley totaled 99 career blocks.

During her 2007 senior stint, Stanley tallied all of her individual career-high marks. On Oct. 9, she amassed a .778 hitting percentage against Bemidji State. Her 11 career-high kills was accomplished against Augustana on Nov. 10 (which marked her final career game in the Cardinal and Black), and she charted a career-high eight blocks (2s-6a) against Saginaw Valley State on Aug. 24, 2007.

A native of Alexandria, Minn., and the daughter of Robert and Monica Stanley, RaeAnne is pursuing a degree in marketing at St. Cloud State.



Stanley



Stanley



Stanley

2007 SCSU Team Awards

Most Inspirational Player
Most Valuable Offensive Player
Most Valuable Defensive Player
Rookie of the Year

Andreana Pieper, JR
Emily Baldwin, JR
Andreana Pieper, JR
Jennifer Waterman, FY



ST. CLOUD STATE AND THE NORTH CENTRAL CONFERENCE

The 2007-08 school year marks the final year of league competition in the North Central Conference for the St. Cloud State University athletics program. St. Cloud State University, Minnesota State University Mankato, Augustana College and the University of Minnesota Duluth will join the Northern Sun Intercollegiate Conference in the fall of 2008. The University of Nebraska-Omaha will join the Mid-America Intercollegiate Athletics Association, while the University of South Dakota and the University of North Dakota have elected to seek NCAA Division I status.

The St. Cloud State men's program joined the North Central Conference in 1981. The Huskies made their presence known in the league winning 13 tennis championships (1986, 1990, 1991, 1993, 1994, 1997, 1998, 1999, 2002, 2003, 2004, 2005, 2006) four swimming and diving championships (1982, 83, 84, 85), four basketball championships (1986, 87, 88, 2001), three golf championships, two football (1989 and 2002), and one title each in cross-country (1983), and baseball (1991).

The SCSU women's program joined the NCC in 1984, and won five conference tennis titles (1985, 1987, 1988, 1990, 1991), three softball titles (1998, 2003, 2004), and one basketball championship (1989).

Career Record Watch

Digs:

- 1. Leah Herrboldt - 1,365 (2001-04)
- 2. Andreana Pieper - 1324 (2005-present)
- 3. Cami Selbitschka - 1,159 (1993-96)
- 4. Megan Hardy - 1,104 (2001-04)

Digs Per Game:

- 1. Andreana Pieper - 4.11 (322 games) - 2005-present
- 2. Megan Hardy - 3.82 (289 games) - 01-04
- 3. Leah Herrboldt - 3.42 (399 games) - 2001-04

Assists:

- 1. 4546 - Heather Modean (381 games) - 1993-96
- 2. 4539 - Rachael Olson (407 games) - 1996-00
- 3. 2817 - Marja Lust (285 games) - 1991-93
- 10. 1183 - Jennifer Waterman (114 games) - 2007-present

Assists Per Game:

- 1. 20.37 - Nancy Thompson (136 games) - 1983-86
- 2. 11.93 - Heather Modean (381 games) - 1993-96
- 3. 11.15 - Rachael Olson (407 games) - 1996-00
- 4. 10.38 - Jennifer Waterman (114 games) - 2007-present

Kills Per Game:

- 1. 16.25 - Terri Deaton (4 games) - 1984-86
- 2. 5.75 - Kathy Davis (260 games) - 1985-88
- 3. 3.85 - Cami Selbitschka (407 games) - 1993-96
- 11. 2.95 - Ashley Shields (109 games) - 2007-present
- 15. 2.72 - Emily Baldwin (177 games) - 2006-present

Huskies in the NCC

(As of Nov. 17, 2007)

Kills (Min. 2.00 per game):

- 2. Emily Baldwin, JR (4.20)
- 15. Ashley Shields, FY (2.95)

Assists (Min. 5.00 per game):

- 6. Jen Waterman, FY (10.29)

Serving Aces (Min. 0.10 per game):

- 6. Andreana Pieper, JR (0.32)
- 7. Kelly Lynn Isaacson, JR (0.96)
- 9. RaeAnne Stanley, SR (0.87)

Points

- 9. Emily Baldwin, JR (4.44 ppg)

Digs (Min. 1.00 per game):

- 1. Andreana Pieper, JR (5.95)
- 14. Emily Baldwin, JR (3.44)



Pieper

2007 Season Highs at SCSU

INDIVIDUAL SEASON HIGHS

- Kills: 24, Emily Baldwin vs. Colorado Mines (8/25/07)
24, Emily Baldwin at Bemidji State (10/9/07)
- Sets: 63, Jen Waterman at Bemidji State (10/9/07)
- Digs: 37, Andreana Pieper at North Dakota (10/20/07)
- Total Blocks: 11, Kelly Lynn Isaacson at UMC (9/25/07)
8, RaeAnne Stanley vs. Saginaw Valley St. (8/24/07)
- Aces: 6, Kelly Lynn Isaacson at UMC (9/25/07)
- Kill Pct.: .536, Ashley Shields vs. St. Francis (8/31/07)
.433, Ashley Shields vs. North Dakota (10/5/07)

TEAM SEASON HIGHS

- Kills: 73 at Bemidji State (10/9/07)
- Sets: 71 at Bemidji State (10/9/07)
- Digs: 128 vs. MSU Moorhead (10/25/07)
- Total Blocks: 15.0 vs. Saginaw Valley State (8/24/07)
15.0 at Minnesota, Crookston (9/25/07)
15.0 vs. MSU Moorhead (10/25/07)
- Aces: 13 vs. Upper Iowa (8/28/07)
13 at Minnesota, Crookston (9/25/07)
- Kill Pct.: .298 vs. Valley City State (10/16/07)



**2007 CSTV/AVCA DII
Top 25 Coaches Final Poll
Dec. 3, 2007**

Rank	School (1st-Place Votes)	Record
1	Concordia-St. Paul (36)	36-4
2	Western Washington	26-5
3	Washburn	38-4
4	Tampa	31-3
5	Minnesota Duluth	29-2
6	West Texas A&M	36-8
7	Grand Valley State	33-4
8	Truman	36-6
9	Cal State San Bernardino	27-3
10	Central Missouri	31-7
11	Lewis	32-4
12	Southwest Minnesota State	26-8
13	Florida Southern	26-9
14	SIU Edwardsville	27-7
15	Emporia State	27-9
16	Hillsdale	26-8
17	Indianapolis	33-4
18	Pittsburg State	28-9
19	Nebraska-Kearney	33-5
20	Ashland	25-6
21	Minnesota State	19-9
22	UC San Diego	20-8
23	California (Pa.)	35-4
24	Augustana (S.D.)	19-11
25	Dowling	39-8

Others Receiving Votes and listed on two or more ballots: Nebraska-Omaha 29; Nova Southeastern 8; West Florida 8; Cal State L.A. 7; Cal Poly Pomona 3.

Eight schools were listed on only one ballot for a total of 46 points.

Dropped out: Nebraska-Omaha (25)
Next Poll: Preseason 2008



**2007 North Central
Regional Poll
Nov. 7, 2007**

Rank	School	DII	Reg.
1.	Minnesota Duluth	26-1	22-0
2.	Concordia-St. Paul	29-3	26-3
3.	Southwest Minnesota St.	24-6	20-5
4.	Nebraska-Omaha	16-8	12-8
5.	Augustana (S.D.)	17-10	7-8
6.	Minnesota State	18-8	13-7
7.	Wayne State (Neb.)	21-11	15-11
8.	South Dakota	22-7	13-6
9.	MSU Moorhead	17-8	16-8
10.	Winona Sate	17-13	13-12



2007 Final NCC Standings

TEAM	NCC			Overall		
	W	L	Pct.	W	L	Pct.
Minnesota Duluth	12	0	1.000	29	2	.935
Nebraska-Omaha	8	4	.667	17	9	.654
Minnesota State	7	5	.583	19	9	.679
Augustana	7	5	.583	19	11	.633
South Dakota	6	6	.500	23	9	.719
St. Cloud State	2	10	.167	10	21	.323
North Dakota	0	12	.000	6	23	.207

2007 NCC Team Statistics - as of Nov. 17, 2007

Hitting Percentage	G	Kills	Errs	Total	Pct.
6. St. Cloud State	114	1501	732	4913	.157
Opponent Hitting %	G	Kills	Errs	Total	Pct.
7. St. Cloud State	114	1873	702	5058	.232
Assists	G	No.	Avg/G		
6. St. Cloud State	114	1370	12.02		
Kills	G	No.	Avg/G		
6. St. Cloud State	114	1501	13.17		
Blocks	G	Solo	Asst	Total	Avg/G
T-5. St. Cloud State	114	44	368	228.0	2.00
Serving Aces	G	No.	Avg/G		
5. St. Cloud State	114	147	1.29		
Digs	G	No.	Avg/G		
5. St. Cloud State	114	2150	18.86		

Husky All-NCC Academic Team...

2007 SCSU All-NCC Academic

Andreana Pieper JR Libero Williams, Minn.

Husky NCC Commissioner's Academic Team...

2007 SCSU NCC Commissioner's Academic Honor Roll Players

Kelly Isaacson JR Middle Eden Prairie, Minn.
Andreana Pieper JR Libero Williams, Minn.
Alecia Lunde FR Outside East Bethel, Minn.

Husky All-NCC Honorable Mention Team...

2007 SCSU All-NCC HM Players

Andreana Pieper JR Libero Williams, Minn.
Emily Baldwin JR Outside Savage, Minn.

Husky Weekly Honor Roll...

2007 NCC Player of the Week Honors

Andreana Pieper Defensive Player of the Week 9/17/07



#2 FIRST YEAR KIERSTEN MORMANN: Mormann saw action in 113 games during her first year as a Husky in the defensive specialist position...she tallied her first career kill against Concordia-St. Paul on Sept. 4, and her first career dig against Saginaw Valley State on Aug. 24...charted a season-high 24 digs against MSU Moorhead on Oct. 24 in Halenbeck Hall...posted a personal-best three serving aces twice during the season...dished out a season-high six assists at Minnesota State on Nov. 2...completed the season with 33 set assists, 23 serving aces, and 284 digs.

#3 JUNIOR KELLY LYNN ISAACSON: Isaacson appeared in 111 games during her junior stint...named to the final 2007 NCC Commissioner's Academic Honor Roll for the second time in her career...notched a season/career-high 18 kills against Southern Indiana on Sept. 1...recorded a season/career-high 11 total blocks (1s, 10a) at Minnesota, Crookston on Sept. 25 and also led the team with six serving aces at Minnesota, Crookston on Sept. 25...posted a personal-best 12 digs at North Dakota on Oct. 20...accumulated 247 kills, 23 set assists, 27 serving aces, 93 digs and a team-best 107.0 total blocks in 2007.

#4 JUNIOR ANDREANA PIEPER: Named to the 2007 All-North Central Conference Honorable Mention team for the first time in her career...gained NCC Commissioner's Academic Honor Roll status for the second time in her career...lone Husky to be named to the All-NCC Academic Team...voted the team's Most Valuable Defensive Player and also charted the Most Inspirational Player Award after the 2007 season...led the NCC with 5.95 digs per game in 2007...the Williams native is closing in on the all-time career digs title at SCSU...former Husky Leah Herrboldt (2001-04) holds the career mark with 1365 digs...Pieper is just 41 digs away, as she currently has 1324 career digs in 322 games played...named NCC Defensive POW on 9/17/07...set new career-high marks of five serving aces at Minnesota, Crookston on Sept. 25 and 37 digs at North Dakota on Oct. 20...led the team with 678 digs in 2007, which shattered the previous school season record of 458 digs held by former Huskies Krista Hartung (1995) and Megan Hardy (2004)...also totaled a team-best 37 serving aces on the season.

#5 JUNIOR EMILY BALDWIN: Baldwin appeared in 106 games for SCSU in 2007 on the outside and totaled a team-best 445 kills, 29 set assists, 15 serving aces, a team second-best 365 digs and 21.0 total blocks...named to the 2007 All-North Central Conference Honorable Mention team...completed the season ranked second in the NCC with 4.22 kills per game...posted a season/career-high 24 kills twice during the season (vs. Colorado Mines (9/25/07) / at Bemidji State (10/9/07)...voted team's Most Valuable Offensive Player...collected a career/season-high 27 digs in the last match of the season against Augustana College on Nov. 10, 2007.

#6 SOPHOMORE SHANNA SEIDEL: Recorded a career-best 28 digs at Winona State on Oct. 23...played in 111 games for SCSU during her sophomore campaign...completed the season with two kills, 18 set assists, 23 serving aces, and a team third-best 294 digs as a defensive specialist.

#7 FIRST YEAR JENNIFER WATERMAN: The first year setter appeared in all 114 games during the 2007 stint...voted team's Rookie of the Year...led the team with 1,183 set assists, which set a new school record for assists in a season as a first year player...the previous record of 859 assists

was held by former Husky Rachel Olson (1997)...tallied first career kill against Saginaw Valley State on Aug. 24...posted a career/season-high eight kills against Valley City State in Halenbeck Hall on Oct. 16...dished out a career/season-high 63 set assists at Bemidji State on Oct. 9...tallied a career/season-high seven total blocks and 19 digs against MSU Moorhead on Oct. 25...completed season ranked fifth on the team with 274 digs and ranked sixth in the NCC with 10.29 assists per game...Waterman ranks 10th all-time at SCSU with 1,183 career set assists.

#9 FIRST YEAR KAYLA TSCHIDA: Tschida appeared in 86 games for the Huskies as a first year right side player in 2007...tallied a team-fourth best 144 kills, 14 set assists, 33 digs and a team fourth-best 52.0 total blocks...posted a career/season-high 17 kills against MSU Moorhead on Oct. 25...led the Huskies with 6.0 total blocks against St. Joseph's on Aug. 31, which marked a personal-best.

#11 RED-SHIRT FIRST YEAR AMY GATZ: Gatz did not appear in a game for the 2007 Huskies and took a red-shirt season.

#14 FIRST YEAR KALA JENSEN: The first year middle/right side player played in 70 games for the Cardinal and Black during her first collegiate season...recorded 99 kills, 17 set assists, 18 digs and 38.0 total blocks in in 2007...her 10 kills against Upper Iowa University (8/28/07) and Winona State (10/23/07) were a career/season-best for Jensen...charted a career/season-high 5.0 total blocks at Minnesota Duluth on Oct. 13.

#16 FIRST YEAR ALYSSA BUYSSE: Buysse did not appear in a game for the 2007 Huskies.

#17 RED-SHIRT FRESHMAN ALECIA LUNDE: Lunde posted 12 kills, one set assist, five digs and 1.0 total blocks during her first year of competition for the Huskies...named to the 2007 North Central Conference Commissioner's Academic Honor Roll...had a season-high six kills against Upper Iowa University on Aug. 28 in Halenbeck Hall.

#20 FIRST YEAR ASHLEY SHIELDS: Shields made an immediate impact on the outside this season as a first year player...appeared in 109 games for the Huskies...was second on the team with 322 kills and her 2.95 kills per game ranked 15th in the North Central Conference...tallied four set assists, three serving aces, 80 digs and 38.0 total blocks in 2007...posted a career/season-high 21 kills at Winona State on Oct. 23...had a career/season-high 14 digs against Valley City State on Oct. 16 in Halenbeck Hall...Shield's career 2.95 kpg rank her 11th all-time at St. Cloud State.





St. Cloud State University Volleyball Update - Page 6

St. Cloud State Volleyball 2007 St. Cloud State Overall Individual Statistics (as of Nov 29, 2007) All matches

Overall record: 10-21 Conf: 2-10 Home: 4-7 Away: 2-10 Neutral: 4-4

## Name	GP-MP-MS	-----ATTACK-----					-----SET-----				-----SERVE-----					
		K	K/Game	E	TA	Pct	A	A/Game	TA	Pct	SA	SA/Gm	SE	TA	Pct	
3 Kelly Lynn Isaacson	111	30-29	247	2.23	99	725	.204	23	0.21	80	.287	27	0.24	15	393	.962
20 Ashley Shields	109	31-6	322	2.95	148	1001	.174	4	0.04	73	.055	3	0.03	5	51	.902
5 Emily Baldwin	106	29-28	445	4.20	196	1527	.163	29	0.27	426	.068	15	0.14	35	356	.902
9 Kayla Tschida	86	26-21	144	1.67	71	458	.159	14	0.16	50	.280	0	0.00	0	1	1.000
15 RaeAnne Stanley	93	26-23	111	1.19	61	322	.155	14	0.15	54	.259	0	0.00	1	9	.889
7 Jennifer Waterman	114	31-30	94	0.82	48	317	.145	1183	10.38	1920	.616	19	0.17	23	309	.926
14 Kala Jensen	70	24-12	99	1.41	64	344	.102	17	0.24	60	.283	0	0.00	0	2	1.000
17 Alecia Lunde	16	7-0	12	0.75	10	41	.049	1	0.06	12	.083	0	0.00	1	1	.000
4 Andreana Pieper	114	31-3	4	0.04	4	60	.000	34	0.30	760	.045	37	0.32	35	476	.926
12 Ann Deutsch	14	6-2	19	1.36	23	65	-.062	0	0.00	0	.000	0	0.00	0	0	.000
6 Shanna Seidel	111	30-25	2	0.02	4	24	-.083	18	0.16	365	.049	23	0.21	14	362	.961
2 Kiersten Mormann	113	31-0	1	0.01	4	28	-.107	33	0.29	244	.135	23	0.20	32	440	.927
ST. CLOUD STATE.....	114	31-31	1501	13.17	732	4913	.157	1370	12.02	4044	.339	147	1.29	161	2400	.933
Opponents.....	114	31-31	1873	16.43	702	5058	.232	1725	15.13	4139	.417	180	1.58	246	2705	.909

## Name	G	---RECEPT---			---DIG---		-----BLOCKING-----					
		RE	TA	Pct	DIG	Dig/G	BS	BA	Total	B/Game	BE	BHE
3 Kelly Lynn Isaacson	111	1	15	.933	93	0.84	16	91	107	0.96	7	5
20 Ashley Shields	109	6	55	.891	80	0.73	3	35	38	0.35	7	2
5 Emily Baldwin	106	30	657	.954	365	3.44	1	20	21	0.20	3	7
9 Kayla Tschida	86	0	10	1.000	33	0.38	5	47	52	0.60	8	4
15 RaeAnne Stanley	93	0	18	1.000	22	0.24	9	72	81	0.87	19	3
7 Jennifer Waterman	114	1	3	.667	274	2.40	4	64	68	0.60	13	37
14 Kala Jensen	70	0	4	1.000	18	0.26	5	33	38	0.54	2	3
17 Alecia Lunde	16	2	13	.846	5	0.31	1	0	1	0.06	0	1
4 Andreana Pieper	114	75	933	.920	678	5.95	0	0	0	0.00	0	2
12 Ann Deutsch	14	1	2	.500	4	0.29	0	6	6	0.43	1	0
6 Shanna Seidel	111	26	501	.948	294	2.65	0	0	0	0.00	0	3
2 Kiersten Mormann	113	30	167	.820	284	2.51	0	0	0	0.00	0	4
TEAM		8										
ST. CLOUD STATE.....	114	180	2494	.928	2150	18.86	44	368	228.0	2.00	61	72
Opponents.....	114	147	2252	.935	2359	20.69	61	419	270.5	2.37	68	78



2007 St. Cloud State University Match Results (10-21 overall, 2-10 NCC)

Date	Opponent	Res	Score	Game scores	Date	Opponent	Res	Score	Game scores
Aug 24	Saginaw Valley #	W	3-2	30-21, 24-30, 27-30, 30-26, 15-11	Sept. 25	Minnesota, Crookston	W	3-1	30-32, 31-29, 30-15, 30-25
Aug 24	Northwood #	L	0-3	27-30, 21-30, 25-30	Oct. 2	at SW MN State	L	0-3	20-30, 18-30, 15-30
Aug 25	Colorado Mines #	W	3-1	28-30, 30-13, 30-21, 30-25	Oct. 5	North Dakota	W	3-0	30-14, 30-20, 30-26
Aug 25	No. 11 Grand Valley #	L	0-3	27-30, 15-30, 15-30	Oct. 6	Minnesota State	L	0-3	21-30, 16-30, 20-30
Aug 28	Upper Iowa	W	3-1	30-22, 27-30, 30-27, 30-15	Oct. 9	at Bemidji State	L	2-3	25-30, 30-26, 25-30, 33-31, 12-15
Aug 30	Lewis Univ.	L	0-3	22-30, 25-30, 23-30	Oct. 13	at Minnesota Duluth	L	0-3	16-30, 13-30, 26-30
Aug 31	St. Joseph's \$	W	3-1	30-22, 30-25, 26-30, 30-24	Oct. 16	Valley City State	W	3-0	30-26, 30-27, 30-21
Aug 31	St. Francis \$	W	3-0	30-24, 30-23, 30-22	Oct. 20	at North Dakota	W	3-2	30-25, 24-30, 18-30, 30-28, 15-8
Sept. 1	S. Indiana \$	L	2-3	30-26, 19-30, 30-24, 28-30, 12-15	Oct. 23	at Winona State	L	2-3	26-30, 25-30, 31-29, 31-29, 8-15
Sept. 1	UW-Parkside \$	L	0-3	27-30, 23-30, 19-30	Oct. 25	MSU Moorhead	L	2-3	32-30, 31-29, 17-30, 25-30, 10-15
Sept. 4	No. 3 Conc.-St. Paul	L	1-3	19-30, 17-30, 30-28, 13-30	Oct. 27	No. 3 Minnesota Duluth	L	0-3	14-30, 19-30, 28-30
Sept. 11	Bemidji State	L	1-3	25-30, 30-26, 24-30, 16-30	Nov. 2	at No. 15 Minnesota St.	L	0-3	20-30, 28-30, 9-30
Sept. 15	No. 13 Augustana	L	0-3	26-30, 28-30, 22-30	Nov. 3	Nebraska-Omaha	L	0-3	26-30, 20-30, 26-30
Sept. 18	Winona State	W	3-1	30-24, 30-28, 23-30, 31-29	Nov. 9	South Dakota	L	0-3	29-31, 16-30, 22-30
Sept. 21	South Dakota	L	0-3	20-30, 18-30, 15-30	Nov. 10	No. 17 Augustana	L	1-3	26-30, 30-25, 22-30, 26-30
Sept. 22	No. 18 Neb.-Omaha	L	1-3	24-30, 30-28, 12-30, 19-30					

Ferris State Tournament
\$ Lewis Univ. Flyer Festival



St. Cloud State University Volleyball Update - Page 7

St. Cloud State Volleyball 2007 St. Cloud State Combined Team Statistics (as of Nov 29, 2007) All matches

RECORD:	OVERALL	HOME	AWAY	NEUTRAL
ALL MATCHES.....	(10-21)	(4-7)	(2-10)	(4-4)
CONFERENCE.....	(2-10)	(1-5)	(1-5)	(0-0)
NON-CONFERENCE.....	(8-11)	(3-2)	(1-5)	(4-4)

#	STATS SUMMARY	ATTACK					SET		SERVE			DIG		BLOCKING							
		G	K	K/G	E	TA	Pct	A	A/G	SA	SE	SA/G	RE	DIG	D/G	BS	BA	Total	B/G	BE	BHE
3	Kelly Lynn Isaacson	111	247	2.23	99	725	.204	23	0.21	27	15	0.24	1	93	0.84	16	91	107	0.96	7	5
20	Ashley Shields	109	322	2.95	148	1001	.174	4	0.04	3	5	0.03	6	80	0.73	3	35	38	0.35	7	2
5	Emily Baldwin	106	445	4.20	196	1527	.163	29	0.27	15	35	0.14	30	365	3.44	1	20	21	0.20	3	7
9	Kayla Tschida	86	144	1.67	71	458	.159	14	0.16	0	0	0.00	0	33	0.38	5	47	52	0.60	8	4
15	RaeAnne Stanley	93	111	1.19	61	322	.155	14	0.15	0	1	0.00	0	22	0.24	9	72	81	0.87	19	3
7	Jennifer Waterman	114	94	0.82	48	317	.145	1183	10.38	19	23	0.17	1	274	2.40	4	64	68	0.60	13	37
14	Kala Jensen	70	99	1.41	64	344	.102	17	0.24	0	0	0.00	0	18	0.26	5	33	38	0.54	2	3
17	Alecia Lunde	16	12	0.75	10	41	.049	1	0.06	0	1	0.00	2	5	0.31	1	0	1	0.06	0	1
4	Andreana Pieper	114	4	0.04	4	60	.000	34	0.30	37	35	0.32	75	678	5.95	0	0	0	0.00	0	2
12	Ann Deutsch	14	19	1.36	23	65	-.062	0	0.00	0	0	0.00	1	4	0.29	0	6	6	0.43	1	0
6	Shanna Seidel	111	2	0.02	4	24	-.083	18	0.16	23	14	0.21	26	294	2.65	0	0	0	0.00	0	3
2	Kiersten Mormann	113	1	0.01	4	28	-.107	33	0.29	23	32	0.20	30	284	2.51	0	0	0	0.00	0	4
TEAM																					
ST. CLOUD STATE.....		114	1501	13.17	732	4913	.157	1370	12.02	147	161	1.29	180	2150	18.86	44	368	228.0	2.00	61	72
Opponents.....		114	1873	16.43	702	5058	.232	1725	15.13	180	246	1.58	147	2359	20.69	61	419	270.5	2.37	68	78

TEAM STATISTICS	SCSU	OPP	DATE	OPPONENT	W/L	SCORE	SCORE-BY-GAME	ATTEND
ATTACK.....			Aug 24	vs Saginaw Valley State	W	3-2	30-21,24-30,27-30,30-26,15-11	-
Kills.....	1501	1873	Aug 24	vs Northwood	L	0-3	27-30,21-30,25-30	-
Errors.....	732	702	Aug 25	vs Colorado Mines	W	3-1	28-30,30-13,30-21,30-25	80
Total Attacks....	4913	5058	Aug 25	vs #11 Grand Valley State	L	0-3	27-30,15-30,15-30	-
Attack Pct.....	.157	.232	Aug 28	UPPER IOWA UNIV.	W	3-1	30-22,27-30,30-27,30-15	314
Kills/Game.....	13.2	16.4	Aug 30	at LEWIS	L	0-3	22-30,25-30,23-30	325
SET.....			Aug 31	vs Saint Joseph's	W	3-1	30-22,30-25,26-30,30-24	50
Assists.....	1370	1725	Aug 31	vs Saint Francis	W	3-0	30-24,30-23,30-22	50
Attempts.....	4044	4139	@ Sep 01	vs Southern Indiana	L	2-3	30-26,19-30,30-24,28-30,12-15	75
Assist Pct.....	.339	.417	Sep 01	vs Wisconsin-Parkside	L	0-3	27-30,23-30,19-30	85
Assists/Game.....	12.0	15.1	Sep 04	at #3 Concordia-St. Paul	L	1-3	19-30,17-30,30-28,13-30	307
SERVE.....			Sep 11	BEMIDJI STATE	L	1-3	25-30,30-26,24-30,16-30	271
Aces.....	147	180	* Sep 15	at #13 Augustana (SD)	L	0-3	26-30,28-30,22-30	262
Errors.....	161	246	Sep 18	WINONA STATE	W	3-1	30-24,30-28,23-30,31-29	192
Attempts.....	2400	2705	* Sep 21	at USD	L	0-3	20-30,18-30,15-30	433
Serve Pct.....	.933	.909	* Sep 22	at Nebraska-Omaha	L	1-3	24-30,30-28,12-30,19-30	502
Aces/Game.....	1.3	1.6	Sep 25	at Minnesota, Crookston	W	3-1	30-32,31-29,30-15,30-25	87
SERVE RECEPTIONS....			Oct 02	at #8 SW Minnesota State	L	0-3	20-30,18-30,15-30	952
Errors.....	180	147	* Oct 05	NORTH DAKOTA	W	3-0	30-14,30-20,30-26	276
Errors/Game.....	1.6	1.3	* Oct 06	#14 MINNESOTA STATE	L	0-3	21-30,16-30,20-30	197
Attempts.....	2494	2252	Oct 09	at Bemidji State	L	2-3	25-30,30-26,25-30,33-31,12-15	464
Reception Pct....	.928	.935	*COct 13	at #3 Minnesota Duluth	L	0-3	16-30,13-30,26-30	315
DEFENSE.....			Oct 16	VALLEY CITY STATE	W	3-0	30-26,30-27,30-21	214
Digs.....	2150	2359	* Oct 20	at North Dakota	W	3-2	30-25,24-30,18-30,30-28,15-8	214
Digs/Game.....	18.9	20.7	Oct 23	at Winona State	L	2-3	26-30,25-30,31-29,31-29,8-15	214
BLOCKING.....			Oct 25	MSU MOORHEAD	L	2-3	32-30,31-29,17-30,25-30,10-15	287
Block Solo.....	44	61	* Oct 27	#3 MINNESOTA DULUTH	L	0-3	14-30,19-30,28-30	301
Block Assist.....	368	419	* Nov 02	at #15 Minnesota State	L	0-3	20-30,28-30,9-30	507
Total Blocks.....	228.0	270.5	* Nov 03	NEBRASKA-OMAHA	L	0-3	26-30,20-30,26-30	204
Blocks Per Game...	2.0	2.4	* Nov 09	USD	L	0-3	29-31,16-30,22-30	232
Block Errors.....	61	68	* Nov 10	#17 AUGUSTANA (SD)	L	1-3	26-30,30-25,22-30,26-30	187
BALL HANDLING ERRORS	72	78						
ATTENDANCE.....								
Total.....	2675	4582						
Dates/Avg Per Date	11/243	12/382						
Neutral site #/Avg	8/42							
Current win streak	0	-						
Home win streak...	0	-						