



Home of the Huskies

St. Cloud State University HUSKY ATHLETICS

Athletic Media Relations - Women's Hockey Update

Contact: Celest Stang 320-308-2141 or crstang@stcloudstate.edu



Season in Review

St. Cloud State University (12-18-7, 7-16-5 WCHA)

Season concluded in the WCHA quarterfinals to second-seeded Minnesota Duluth in the third game of the best-of-three series on Feb. 25, 2007.

2006-07 SCSU Schedule/Results

Date	Opponent	Time/Result
9/29	Robert Morris	W, 4-0
9/30	Robert Morris	T, 3-3 OT
10/6	@ Wisconsin	L, 2-8
10/7	@ Wisconsin	L, 1-2 OT
10/13	@ Bemidji State	L, 4-6
10/14	@ Bemidji State	L, 2-4
10/20	Ohio State	W, 5-4
10/21	Ohio State	W, 3-2 OT
10/27	Minnesota Duluth	L, 0-2
10/28	Minnesota Duluth	L, 0-6
11/3	@ Vermont	W, 7-0
11/4	@ Vermont	W, 6-0
11/17	Minnesota	L, 2-5 ENG
11/18	@ Minnesota	L, 1-4
11/25	@ North Dakota	W, 4-1
11/26	@ North Dakota	T, 5-5 OT
12/1	Minnesota State	L, 2-3
12/2	Minnesota State	W, 3-2
12/8	Wisconsin	T, 2-2 OT
12/9	Wisconsin	T, 3-3 OT
1/5	Boston University	T, 2-2 OT
1/6	Boston University	W, 4-1
1/13	@ MN Duluth	L, 2-4 ENG
1/14	@ MN Duluth	L, 0-1
1/19	at Ohio State	T, 3-3 OT
1/20	at Ohio State	L, 1-6
1/26	Bemidji State	W, 3-1
1/27	Bemidji State	T, 2-2 OT
2/2	@ Minnesota	L, 0-4
2/3	Minnesota	L, 4-6
2/9	at MN State	L, 3-4 OT
2/10	at MN State	L, 0-2
2/16	North Dakota	W, 6-1
2/17	North Dakota	W, 3-1
2/23-25	WCHA First Rd at UMD	
2/23	Minnesota Duluth	L, 3-4
2/24	Minnesota Duluth	W, 3-1
2/25	Minnesota Duluth	L, 1-5
3/3-4	WCHA Finals	Mpls.
3/9-11	NCAA Regional	TBA
3/16-18	NCAA Frozen Four Lake Placid, NY	

(all games are listed as Central Time)

For complete ticket information, please call 1-877-SCSUTIX or 320-308-2137.

NEED INFO?

For information about SCSU Hockey, please contact the St. Cloud State Athletic Media Relations Office at 320-308-2141. The Hockey Contact at SCSU for 2006-07 is Celest Stang. You can contact her via email at

crstang@stcloudstate

2006-07 SCSU WOMEN'S HOCKEY NEWS

Release Date: April 16, 2007



2006-07 SEASON RESULTS: The Huskies completed the 2006-07 season 12-18-7 overall and 7-16-5 in the WCHA for a seventh place finish. Since 1998, SCSU has posted an overall record of 102-179-21 and a 60-128-16 mark in the WCHA.

IN THE NHC: The 2006-07 SCSU women's hockey team was 8-5-5 in the National Hockey Center. The Huskies have posted a 63-82-11 overall home record since 1998.

ON THE ROAD: The 2006-07 SCSU women's hockey team was 4-13-2 on the road. SCSU has an all-time road record of 36-92-10.



SEASON ENDS IN WCHA QUARTERFINALS: St. Cloud State (seventh-seeded) became the first lower seed team to push a WCHA quarterfinal best-of-three series to the third and deciding game this season against second-seeded Minnesota Duluth on Feb. 23-25 at Mars Lakeview Arena in Duluth. In the first game of the series, SCSU lost 3-4. Saturday, the Huskies rallied for a 3-1 win against UMD. The Huskies win on Saturday marked just the second win in school history in Duluth, with the first coming on Feb. 24, 2002, in a 3-0 shutout victory over UMD at the DECC. On Sunday, the Huskies ran out of momentum, falling 5-1 to the Bulldogs, who advanced to the WCHA Championships at Ridder Arena in Minneapolis on March 3-4.

PLAYOFF HISTORY: In playoff action, SCSU has a historical record of 3-6-0, with the most recent playoff loss being suffered to Minnesota Duluth on Sunday, Feb. 25, 2007. The Huskies are now 0-2 against Wisconsin in playoff action, 1-2 against Minnesota Duluth in playoff action and 2-2 against Ohio State in playoff competition.

RADIO COVERAGE: Numerous St. Cloud State women's hockey games were heard live on KVSC 88.1 FM this past season, as well as streamed live at www.kvsc.org.

WCHA ALL-SCHOLAR HUSKIES: SCSU's Bobbie Anderson (Whitcourt, Alberta), Laura Fast (Calgary, Alberta) and Denelle Maguet (St. Rose, Manitoba) were all named to the second annual WCHA All-Scholar team for the second time in their respected careers.

SENIOR SALUTE: St. Cloud State says good bye to six seniors at the completion of the 2006-07 season. Those seniors include; Bobbie Anderson (Whitcourt, Alberta), Hailey Clarkson (Winnipegosis, Manitoba), Tricia Fast (Calgary, Alberta), Jackie Jensen (Madison, Wisc.), Denelle Maguet (St. Rose, Manitoba) and Lauri St. Jacques (Sturgeon Falls, Ontario).

HUSKIES HIT CENTURY MARK: SCSU's women's hockey team tallied the school's 100th all-time win on Friday, Feb. 16, with a convincing 6-1 victory over North Dakota in the National Hockey Center. SCSU's all-time record, dating back to the inception of the program in 1998, is now 102-179-21.

TIES LEAD NATION: SCSU's seven ties during the regular season led the nation in 2006-07. The NCAA Division I record for most ties in a season is eight, held by Bemidji State (2002), Northeastern (2004) and Connecticut (2005).

SCSU TIES NCAA RECORD: The Huskies played in 10 overtime games in 2006-07, which tied the NCAA Division I women's hockey record for most overtime games played in a season. Ohio State initially set the record in 2002, and then tied their own record in 2006.



Giesen

SCSU's HEAD COACH JEFF GIESEN: Jeff "Goose" Giesen completed his first season as the head coach of the SCSU women's hockey program in 2006-07. A native of Blaine, Minn., Giesen is the third head coach since the inception of the women's program in 1998. Giesen served as the SCSU assistant women's hockey coach from 2003-2006, working with the Huskies' defensive players and recruiting. He came to SCSU from Saint John's University, where he was an assistant coach from 1992-98 and an associate head coach from 1998-2003. Giesen tallied his first career victory against Robert Morris on September 29, 2006, with a 4-0 shutout in the NHC. A 1993 graduate of St. Cloud State University and a true student of the game, Coach Giesen and his wife Karla reside in St. Cloud, Minn., with their daughter Delaney.

www.StCloudState.edu/Athletics



MORE NEWS AND NOTES...

TEAM CAPTAINS: Senior forwards Denelle Maguet (St. Rose, Manitoba) and Hailey Clarkson (Winnipegosis, Manitoba) served as the team captains for the Huskies in 2006-07. The assistant captains for this winter were senior goaltender Lauri St. Jacques (Sturgeon Fall, Ont.) and junior forward Laura Fast (Calgary, Alberta).

SCSU ASSISTANT COACHING STAFF:



Idalski

BRIAN IDALSKI: The former head coach at the University of Wisconsin-Stevens Point, Idalski brings a multitude of success to SCSU as he completed his first season as a full-time assistant to first-year head women's hockey coach Jeff Giesen. Idalski served as the head women's coach at UW-Stevens Point from 2001-2006 and posted a 108-21-11 record (.811 winning percentage) in the last five seasons. During his tenure with the Pointers, he guided his teams to an NCAA Division III national runner-up finish in 2003-04, an NCAA Division III quarterfinal showing in 2004-05 and a third place finish at the NCAA Division III Tournament in 2005-06. Leaving behind a notable list of accomplishments, Idalski charted 2002, 2005 and 2006 Northern Collegiate Hockey Association (NCHA) regular season championships and NCHA playoff championships in 2002, 2004, 2005 and 2006. A four-year letterwinner at UW-Stevens Point from 1991-1995, Idalski was a member of the Pointers' NCAA Division III runner-up team in 1992 and was a sophomore on the 1993 Division III national championship team. Playing 97 career games as a defenseman, he tallied five goals and 20 assists. Following his Pointer playing days, Idalski went on to play professional hockey for two years with the Madison Monsters of the United Hockey League from 1995-1997. He then played two seasons with the Columbus (Ga.) Cottonmouths of the Central Hockey League from 1997-1999, and won the 1998 CHL regular season and playoff championship. A Warren, Mich. native, Idalski his wife, Nicole, have four sons, Beau, Jason, David and Mitchel.



Kranz

JENNIFER KRANZ: Jennifer Kranz, a native of Waukesha, Wisc., joined the SCSU women's hockey staff in 2006-07 after serving as the assistant girls' prep ice hockey coach at Shattuck-St. Mary's School in Faribault, Minn., since 2004. At SCSU, Kranz's responsibilities include recruiting, working with the forwards and monitoring team academics. No stranger to the game, Kranz was a member of the

Providence College women's varsity ice hockey team from 1998-2002. She tallied 22 points (12g,10a) in 104 career games played with the Friars. After graduating from Providence College in 2002 with a BA in English, Kranz joined the Shattuck-St. Mary's School as the assistant coach for the girls' junior prep ice hockey team. In 2003, Kranz was promoted to the head coach position for the girls' junior prep ice hockey team. During her tenure at Shattuck-St. Mary's, Kranz also served as an academic advisor for the student-athletes, and since 2004, also held the community service coordinator responsibilities for the girls' hockey program. Kranz recently served as the Team Leader at the 15/16's USA Player Development Camp in Lake Placid, and has been actively involved with the Wisconsin Amateur Hockey Association since 2000 serving as an evaluator.

2006-07 SCSU Women's Hockey Roster

Table with columns: No., Name, Pos., L/R, HT, YR, Hometown (Previous School). Lists 33 players including Abby Krause, Tricia Fast, Jenaca Fredheim, etc.

2006-07 PRONUNCIATION GUIDE

- Dey Day
Fredheim Fred-hi-m
Giesen..... Gee-sen
Hirsch Her-sh
Idalski Eye-doll-ski
Kuyper Ki-per
Maguet..... Maggie
Meierhofer Mi-er-hoff-er
Pezon Pee-zon
Schroeder Sh-ra-der

WEB SITE: To obtain complete information about SCSU hockey this season, please go to the Husky Home Page at

www.stcloudstate.edu/athletics

For information on the WCHA, please check out the league web site at

www.wcha.com

IMPORTANT NUMBERS: SCSU Ticket Office: 320-308-2137
SCSU AMR Office: 320-308-2141 NHC Press Box: 320-308-5227

USA Today/USA Hockey Magazine Women's College Hockey Poll -- #24 (Final) (first-place votes in parentheses)

Table with columns: Rank, Last Week's Ranking, 2006-07 Record, Weeks in Top-10. Lists top 10 teams like University of Wisconsin, Minnesota Duluth, etc.

Others receiving votes: Colgate University, 1; Providence College, 1



MORE NEWS AND NOTES...

WCHA Championships

Ridder Arena, Minneapolis

SEMIFINALS

Sat., March 3

No. 4 OSU 0 vs. No. 1 Wisconsin 4

No. 3 Minnesota 3 vs. No. 2 Minnesota Duluth 2 OT

CHAMPIONSHIP

Sun., March 4

No. 3 Minnesota 1 vs. No. 1 Wisconsin 3



2006-2007 TEAM AWARD WINNERS:

Most Valuable Player

Laura Fast, Jr., F

Most Dedicated Player

Denelle Maguet, Sr., F

Most Improved Player

Kelly Meierhofer, FY, D

Rookie of the Year

Holly Roberts, FY, F

Outstanding Student-Athlete

Tricia Fast, Sr., D

St. Cloud Times' Co-Stars of the Season

Laura Fast, Jr., F / Holly Roberts, FY, F

St. Cloud State Quick Facts

Location.....	St. Cloud, Minn.	Asst. Coaches.....	Brian Idalski
Founded.....	1869	Jennifer Kranz
Enrollment.....	16,000	Record at SCSU.....	12-18-7
Colors.....	Cardinal & Black	Career Record.....	12-18-7 (1 yr)
Arena.....	National Hockey Center	Hockey SID.....	Celest Stang
Capacity.....	5,371	Phone.....	(320) 308-2141
Conference.....	WCHA	Fax.....	(320) 308-2099
Head Coach.....	Jeff Giesen	Email.....	crstang@stcloudstate.edu
Alma Mater.....	St. Cloud State, 1993	Web.....	www.stcloudstate.edu/athletics

2006-07 SCSU Situations

(as of 02/26/07)

	2006-07	All-Time
Game One of the Series	6-9-3	45-82-7
Game Two of the Series	6-8-4	47-74-14
Game Three of the Series	0-1-0	0-1-0
Home Record	8-5-5	63-82-11
Road Record	4-13-2	37-94-10
Neutral Record	0-0-0	0-4-0
SCSU in Minnesota	9-15-5	81-126-17
SCSU outside of MN	3-3-2	20-41-4
Huskies score first	7-3-1	76-36-7
Opponents score first	4-13-6	24-141-14
Lead after 1st Period	7-1-1	55-14-5
Behind after 1st Period	1-11-4	9-123-12
Tied after 1st Period	4-6-2	38-41-4
Lead after 2nd Period	12-1-3	79-17-7
Behind after 2nd Period	0-13-3	3-146-11
Tied after 2nd Period	0-4-1	20-16-3
Huskies outshoot opponent	6-5-4	69-28-13
Opponents outshoot SCSU	4-12-3	29-143-8
Shots are even	2-1-0	4-8-0
Under 20 shots	0-3-0	13-62-1
Have 20-29 shots	3-10-3	34-75-7
Have 30-39 shots	8-4-1	35-36-7
Have 40-49 shots	1-1-3	14-5-6
Have 50+ shots	0-0-0	6-1-0
One goal game	3-4	34-36
Two goal game	2-6	22-33
Three goal game	2-2	12-34
Four goal game	1-2	11-25
Five goal game or more	3-3	20-50
Overtime games	1-2-7	7-10-17
Shutouts by SCSU	3	20
SCSU shutout by opponent	5	43
Huskies in September	1-0-1	1-0-1
Huskies in October	2-6-0	14-37-1
Huskies in November	3-2-1	21-30-5
Huskies in December	1-1-2	12-22-4
Huskies in January	2-3-3	26-35-9
Huskies in February	3-6-0	22-46-1
Huskies in March	0-0-0	6-9-0
Following a win	3-5-3	37-56-8
Following a loss	6-9-1	48-107-11
Following a tie	1-4-2	10-9-2
Playoff Record	1-2-0	3-6-0
WCHA Record	7-16-5	60-128-16
Non-Conference Record	4-0-2	41-49-5
Overall Record	12-18-7	102-179-21





MORE NEWS AND NOTES...

MAGUET, CLARKSON AND ST. JACQUES NAMED NCAA SKILLS CHALLENGE ALTERNATES: SCSU's Denelle Maguet, Hailey Clarkson and Lauri St. Jacques were each selected as alternates for the second annual NCAA 2007 Pontiac Frozen Four Skills Challenge on Friday, April 6, at the Scottrade Center in St. Louis, MO.

UNBEATEN IN NON-CONFERENCE ACTION: The Huskies were unbeaten in non-conference action this year, sporting a 4-0-2 (.833) nc record. Wisconsin was the only other WCHA team to post an undefeated nc record, going 7-0-0. SCSU has an all-time non-conference record of 41-49-5 since 1998.

CLARKSON SCORES OVER 100 COLLEGIATE POINTS:

Hailey Clarkson, a native of Winnipegosis, Manitoba, charted 85 points (33g, 52a) in a Husky uniform, ranking her fifth on the all-time scoring list at SCSU. A 2004 transfer from Findlay, Clarkson scored her 100th collegiate career point on Nov. 4, 2006 against Vermont and completed her collegiate career with 119 points (46g, 73a).



Hailey Clarkson - C

ROBERTS NAMED TO ALL-WCHA ROOKIE TEAM:

SCSU's first year forward Holly Roberts (St. Cloud) was named to the All-Western Collegiate Hockey Association Rookie Team after completing the season ranked third in overall WCHA freshman scoring with 35 points (18g, 17a). The last Husky to be named to the All-WCHA Rookie Team was Kelly Stewart after the 2002-2003 season.

TWELVE HUSKIES GAIN ALL-WCHA ACADEMIC HONORS: St. Cloud State had 12 student-athletes named to the 2006-07 All-Western Collegiate Hockey Association Academic women's hockey team. Those Husky players included: Bobbie Anderson, Sr. (Whitecourt, Alberta); Hailey Clarkson, Sr. (Winnipegosis, Manitoba); Jacqueline Jensen, Sr. (Madison, Wisc.); Abby Krause, Jr. (Moorhead, Minn.); Laura Fast, Jr. (Calgary, Alberta); Tricia Fast, Sr. (Calgary, Alberta); Marie-Michel Lemieux, Jr. (Boisbrand, Quebec); Denelle Maguet, Sr. (St. Rose, Manitoba); Michelle Moen, So. (Rogers, Minn.); Sammy Nixon, So. (Blaine, Minn.); Brita Schroeder, So. (Monticello, Minn.) and Lauri St. Jacques, Sr. (Sturgeon Falls, Ontario).

To earn a position on the WCHA All-Academic Team, each player must have completed at least one year of eligibility at her present institution, have a current GPA of 3.0 for the two previous semesters and have competed in at least one-half of her institution's varsity inter-collegiate ice hockey games during the current season (goaltenders must have played in 33 percent of all games).

Anderson, T. Fast and St. Jacques are each three-time WCHA All-Academic picks. Clarkson, L. Fast, Jensen, Lemieux and Maguet are two-time All-Academic recipients, while Krause, Moen, Nixon and Schroeder were each named to the WCHA All-Academic Team for the first time in their careers.



When Was The Last Time...

SCSU played in OT: February 9, 2007 at Minnesota State, L 3-4 in All Seasons Arena.

SCSU won in OT: October 21, 2006 vs. Ohio State, W, 3-2.

SCSU lost in OT: February 9, 2007 at Minnesota State, L, 3-4.

SCSU recorded a shutout: November 4, 2006. Lauri St. Jacques had 11 saves in a 6-0 win at University of Vermont in Gutterson Fieldhouse.

SCSU recorded back-to-back shutouts: Nov. 3-4, 2006. Carmen Lizee had 13 saves in a 7-0 win at UVM on Nov. 3 and Lauri St. Jacques had 11 saves in a 6-0 win at UVM on Nov. 4.

SCSU was shutout: Feb. 10, 2007. SCSU lost to Minnesota State 0-2 in All Seasons Arena. MSU's Britni Kehler made 30 saves in the game.

SCSU was shutout at the NHC: Oct. 28, 2006. SCSU lost to Minnesota Duluth 6-0 in the National Hockey Center. UMD's Kim Martin made 31 saves.

An SCSU player scored a Hat Trick: Nov. 4, 2006. First year forward Holly Roberts scored three goals in the third period in a 6-0 shutout win at the University of Vermont.

An opposing player scored a Hat Trick: October 28, 2006. Minnesota Duluth's Sara O'Toole scored four goals in a 6-0 shutout victory in favor of the Bulldogs in the National Hockey Center.

An SCSU player achieved a Playmaker: Nov. 4, 2006. Hailey Clarkson tallied two goals and three assists in a 6-0 shutout victory at the University of Vermont in Gutterson Fieldhouse.

An opposing player achieved a Playmaker: October 28, 2006. Minnesota Duluth's Saara Tuominen collected on goal and three assists in a 6-0 shutout victory in favor of the Bulldogs in the National Hockey Center.

An SCSU player scored a Shorthanded Goal: Jan. 26, 2007. Holly Roberts scored 2 SHG in a 3-1 victory over Bemidji State in the NHC.

An SCSU player(s) scored a Shorthanded Goal in consecutive games: Nov. 3-4, 2006. Michelle Moen scored a SHG on Nov. 3 at 15:36 of the third period in a 7-0 win at UVM and Holly Roberts scored a SHG the following night on Nov. 4 at 10:04 of the third period in a 6-0 win at UVM.

An opposing player scored a Shorthanded Goal: February 10, 2007. Minnesota State's Maggie Fisher scored a SHG in a 2-0 MSU victory in All Seasons Arena.

An SCSU player scored two SHG's: Jan. 26, 2007. Holly Roberts scored two SHG in a 3-1 victory over Bemidji State in the NHC.

An opposing player scored two SHG's: Never.

An SCSU player scored two PPG's: Nov. 26, 2006. Hailey Clarkson in a 5-5 overtime tie at North Dakota in the Ralph Engelstad Arena. SCSU took three of four points against UND that weekend, Nov. 25-26.

An opposing player scored two PPG's: Oct. 21, 2006. Ohio State's Lisa Chesson in a 5-4 SCSU win at the National Hockey Center.

An opposing player scored three PPG's: Oct. 28, 2006. UMD's Sara O'Toole scored three ppg's in a 6-0 Bulldog victory in the NHC.

An SCSU player scored an ENG: Feb. 17, 2007. Laura Fast scored and empty net, SHG in a 3-1 victory over North Dakota in the NHC.

An opposing player scored an ENG: Jan. 13, 2007. Minnesota Duluth's Karine Demeule scored an empty net goal at 19:11 to seal a 4-2 victory over the Huskies in the DECC.

SCSU scored with a pulled goalie/extra skater: Jan. 20, 2007. Marie-Michel Lemieux scored at 13:50 in the third period against Ohio State University to cut the Buckeye lead to 5-1 with a 6-on-4 advantage during a Husky power play opportunity. SCSU eventually lost the contest, 1-6 in the OSU Ice Rink.

SCSU was out-shot and won: Feb. 17, 2007. SCSU was out-shot 33-30, yet held on for the 3-1 win over North Dakota in the NHC.

SCSU out-shot the opponent and lost: Feb. 10, 2007. SCSU out-shot Minnesota State 30-19 and suffered a 0-2 loss in All Seasons Arena.





2006-07 Final Stats

Goals

18.....	Roberts
16.....	L. Fast
12.....	Hogan
12.....	Pezon
11.....	Clarkson
5.....	Lemieux/Kuyper/Nixon
4.....	McCarthy
3.....	Maguet/Jensen
2.....	Kemmerer/Moen
1.....	Currier

Assists

17.....	Hogan/Roberts
15.....	Maguet
14.....	L. Fast/Clarkson/McCarthy
11.....	Pezon
10.....	Kuyper
7.....	Schroeder
6.....	Nixon
4.....	Lemieux/T. Fast
3.....	Dey/Krause/Hirsch
2.....	Jensen/ Currier
1.....	Kemmerer/Fredheim

Points

35.....	Roberts
30.....	L. Fast
29.....	Hogan
25.....	Clarkson
23.....	Pezon
18.....	McCarthy
18.....	Maguet
15.....	Kuyper
11.....	Nixon
9.....	Lemieux
7.....	Schroeder
5.....	Jensen
4.....	T. Fast
3.....	Kemmerer/Currier/Dey/Hirsch/Krause
2.....	Moen
1.....	Fredheim

NCAA ELITE 8 RESULTS:

Friday, March 9, 2007 - First Round
Minnesota Duluth 3 at Mercyhurst 2 (OT)

*NCAA Quarterfinal

Friday, March 9, 2007 - First Round

*St. Lawrence 6 at New Hampshire 2
*Boston College 3 at Dartmouth 2 (2OT)
*Harvard 0 at Wisconsin 1 (4OT)

*NCAA Quarterfinal

NCAA FROZEN FOUR RESULTS:

Lake Placid, NY
Friday, March 16, 2007 - Semifinals
St. Lawrence 0 vs. Wisconsin - 4
Minnesota Duluth 4 vs. Boston College - 3 (2OT)

Sunday, March 18, 2007 - Championship
Minnesota Duluth 1 vs. Wisconsin 4



2006-07 WCHA Final Standings (Mar. 27)

	Conference Only					Overall			
	Pts	GP	Record	Win%	GF- GA	GP	Record	Win%	GF- GA
1 Wisconsin	50	28	23-1-4	.893	112- 33	41	36-1-4	.927	166- 36
2 Minnesota Duluth	41	28	19-6-3	.732	102- 38	39	24-11-4	.667	128- 68
3 Minnesota	35	28	17-10-1	.625	85- 66	36	23-12-1	.653	115- 85
4 Ohio State	30	28	13-11-4	.536	79- 70	37	20-13-4	.595	112- 87
5 Minnesota State	26	28	12-14-2	.464	78- 91	35	16-17-2	.486	108-106
6 Bemidji State	22	28	9-15-4	.393	53- 85	36	11-20-5	.375	66-110
7 St. Cloud State	19	28	7-16-5	.339	66- 94	37	12-18-7	.419	99-110
8 North Dakota	1	28	0-27-1	.018	24-122	36	3-31-2	.111	39-142

WCHA PLAYOFFS - FIRST ROUND RESULTS

Friday, Feb. 23

*Minnesota State 0 at Ohio State 1
#St. Cloud State 3 at Minnesota Duluth 4
*Bemidji State 1 at Minnesota 5
*North Dakota 0 at Wisconsin 4

*WCHA Quarterfinals

#WCHA Quarterfinals (Mars-Lakeview Arena)

Saturday, Feb. 24

*Minnesota State 4 at Ohio State 5 OT
*Bemidji State 1 at Minnesota 4
#St. Cloud State 4 at Minnesota Duluth 1
*North Dakota 0 at Wisconsin 3

*WCHA Quarterfinals

#WCHA Quarterfinals (Mars-Lakeview Arena)

Sunday, Feb. 25

#St. Cloud State 1 at Minnesota Duluth 5

#WCHA Quarterfinals (Mars-Lakeview Arena)

(all games listed CT)



WCHA CHAMPIONSHIP RESULTS

Saturday, March 3

*Ohio State 0 vs. Wisconsin 4
*Minnesota 3 vs. Minnesota Duluth 2 OT

*WCHA Semifinal at Ridder Arena

Sunday, March 4

*Minnesota 1 vs. Wisconsin 3

* WCHA Championship at Ridder Arena

HUSKY HONOR ROLL in 2006-07

Holly Roberts - WCHA Rookie POW - 10/3/06
Lauri St. Jacques - WCHA Defensive POW - 10/3/06
Holly Roberts - WCHA Rookie POW - 11/7/06
Meaghan Pezon - USCHO.com Offensive POW - 12/12/06
Kendall Newell - USCHO.com Defensive POW - 12/12/06
Kendall Newell - WCHA Defensive POW - 12/12/06
Laura Fast - WCHA Offensive POW - 2/21/07

HUSKIES IN THE POLLS in 2006-07

Sept. 19 - Huskies received two votes in USCHO.com Preseason Poll

The SCSU Career 100-Point Club

Player	Hometown	G	A	P	Season
1 Stang, Roxanne	Princeton	70	49	119	2000-04

USCHO.com Division I Women's Poll

FINAL March 5, 2007

Team (First Place)	Record	Pts	Last Poll
1 Wisconsin (13)	33-1-4	148	1
2 Mercyhurst (2)	32-1-3	137	2
3 Dartmouth	27-4-2	119	3
4 New Hampshire	28-3-5	106	4
5 St. Lawrence	28-7-3	89	5
6 Harvard	23-7-2	73	6
7 Boston College	23-9-2	52	8
8 Minnesota-Duluth	22-10-4	50	7
9 Minnesota	23-12-1	36	9
10 Ohio State	20-13-4	11	10
Others Receiving Votes: Providence 3, Colgate 1			



#2 ABBY KRAUSE - 2006-07: Krause appeared in 12 games for the Huskies after battling an injury-stricken season...dished out three assists, including two against Vermont on Nov. 3, 2006...named to the All-WCHA Academic team.

Krause

#3 TRICIA FAST - 2006-07: T. Fast played in all 37 games for the Huskies during her senior season...tallied four assists and finished her career with 11 assists...was -5 on the year and 20-40 PIM...fired off 18 shots...was named to the All-WCHA Academic team for the third time in her career...voted team's Outstanding Student-Athlete.



T. Fast



Fredheim

#4 JENACA FREDHEIM - 2006-07: Fredheim made 19 appearances for SCSU during her first year...tallied her first collegiate point with an assist at Vermont on Nov. 3, 2006...was an even 0 in +/-...4-8 in PIM.

#5 KATIE KEMMERER - 2006-07: Kemmerer had a strong season-opening game, scoring one goal and one assist against Robert Morris on Sept. 29, 2006...totaled three points (2g, 1a) in first season as a Husky...was +1 on the season...appeared in 17 games.



Kemmerer



Roberts

#6 HOLLY ROBERTS - 2006-07: Roberts had a standout year as a freshman for the Huskies...led the team in scoring with 35 points, including 18 goals and 17 assists...a two-time WCHA Rookie of the Week pick...named to All-WCHA Rookie Team...posted a career high five points (3g, 2a) against Vermont on Nov. 4, 2006...Roberts' hat trick at Vermont is a new school record for the fastest natural hat trick scored in a game (6:02)...set a new school record for most short-handed goals in a game with 2 against Bemidji State on Jan. 27, 2007...ranks second on the SCSU freshman scoring list behind Ricki Lee Doyle, who scored 62 points (26g, 36a) as a freshman during the 1999-2000 season... led the team with three short-handed goals in 2006-07... was +9 with 18/47 PIM...tied for first on team with six power play goals...voted team's Rookie of the Year...St. Cloud Time's Co-Star of the year.

#7 BRITA SCHROEDER - 2006-07: Appeared in 36 games for SCSU...charted seven assists and fired off 39 shots...was +2 and 22-44 PIM...named to All-WCHA Academic team.



Schroeder



Kuyper

#9 BRITTNI KUYPER - 2006-07: Kuyper finished the season +6 in 35 games played...scored two points in a game three times...tallied five goals and 10 assists...was 9-18 PIM...scored two game-winning goals.



Maguet - C

#11 DENELLE MAGUET - C - 2006-07: Maguet completed her senior season scoring three goals and dishing out 15 assists for 18 total points...fired off 104 shots...was +2 on the season with 12-24 PIM...posted game-winning goals against Ohio State on Oct. 21, 2006 and at North Dakota on Nov. 25, 2006...named to the second annual All-WCHA Scholar Athlete team for the second time in her career...team co-captain... named team's Most Dedicated Player...gained All-WCHA Academic honors for second time in her career...finished career at SCSU ranked 11th in scoring with 57 points (19g, 38a)...a 2004 transfer from Findlay, Maguet totaled 81 collegiate points (32g, 49a).

#13 FELICIA NELSON - 2006-07: A transfer from Minnesota State...redshirt season.



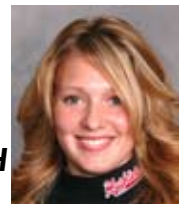
Nelson



L. Fast - A

#14 LAURA FAST - A - 2006-07: Voted team's Most Valuable Player...appeared in all 37 games for SCSU during junior season...was second on the team with 30 points (16g, 14a)...was +2 with 29-58 PIM...second on team with five power play goals... had a career high four points (2g, 2a) against North Dakota on Feb. 16, 2007, in the NHC... named to second annual All-WCHA Scholar Athlete team for second time in career...a WCHA Offensive Player of the Week pick... named to All-WCHA Academic team for second straight year... ranks ninth on SCSU's all-time scoring list with 64 career points (28g, 36a)...St. Cloud Time's Co-Star of the year.

#15 STACY DEY - 2006-07: Saw action in 33 games for SCSU on the blue line...tallied three assists...was 4-8 PIM and an even 0 on the +/- list.



Dey



Hirsch

#16 DANIELLE HIRSCH - 2006-07: Played in 35 games as a freshman and posted three assists...tallied first collegiate point against Ohio State on Oct. 20, 2006 in the NHC...was -2 on the season and led the team in PIM with 30-74.

#17 MARIE-MICHEL LEMIEUX - 2006-07: Played in all 37 games during junior season...scored five goals and dished out four assists for nine points...was -5 on the season...was 17/34 PIM...tallied three power play goals...named to All-WCHA Academic team for second time in career.



Lemieux



Anderson

#18 BOBBIE ANDERSON - 2006-07: Played in 14 games senior season...named to All-WCHA Scholar Athlete team for second year and to the All-WCHA Academic team for third time in career...finished career with 8 points (3g, 5a) in 85 games played.



#19 AMY CURRIER - 2006-07: Currier played in 33 games and posted one goal and two assists on the season...lone goal of the year came against Vermont on Nov. 3, 2006...was -3 on the year and 9-18 in PIM...fired off 25 shots.

Currier

#20 CARMEN LIZEE - 2006-07: Was in a three-way goalie rotation during junior season...was second on team with a .914 save percentage...backstopped the Huskies with 266 saves in 15 games played...made 10 starts...posted first collegiate victory at SCSU on Oct. 20, 2006 against Ohio State in the NHC...tallied an overall record of 4-5-2 in 2006-07...finished season with a team best 2.32 GAA.



Lizee



Nixon

#21 SAMMY NIXON - 2006-07: Played in 36 games as a sophomore...charted 11 points (5g, 6a)...was -5 on the season and 5-10 in PIM...scored two points (1g, 1a) against Minnesota on Feb. 3, 2007 in the NHC...tallied one power play goal on the season against OSU on 10/20/06, which proved to be the game-winning goal...gained All-WCHA Academic honors.

#22 JACKIE JENSEN - 2006-07: Tallied three goals and two assists during senior season in 30 games played...was -3 and 8/16 in PIM in 2006-07...completed career at SCSU tied for fifth on the all-time career games played list with 134...scored 10 career goals and 15 career assists in the Cardinal and Black...named to All-WCHA Academic team for second time in career.



Jensen



Moen

#23 MICHELLE MOEN - 2006-07: Appeared in 11 games for SCSU...scored a goal against Robert Morris in season-opener on Sept. 29, 2006 and a short-handed goal against Vermont on Nov. 3, 2006...was +2 on the season...5-10 PIM...named to All-WCHA Academic team.

#24 HAILEY CLARKSON - C

2006-07: Clarkson scored her 100th collegiate career point on Nov. 4, 2006 at Vermont...the senior forward completed her career at SCSU with 85 points (33g, 52a), which ranks her fifth on the all-time scoring list at SCSU...had a season high five points (2g, 3a) against Vermont on Nov. 4, 2006...led team with six power play goals...was +4 on the season with 14-28 PIM...team co-captain...named WCHA All-Academic for the second time in her career...a 2004 transfer from Findlay, Clarkson totaled 119 points (46g, 73a) at the collegiate level in 144 games played.



Clarkson - C



Hogan

#25 CAITLIN HOGAN - 2006-07: Hogan appeared in all 37 games for the Huskies her freshman season...was third on the team in scoring with 29 points (12g, 17a)...her 17 assists were a team co-best...+7 on the season...22-52 PIM...second on the team with five power play goals...tallied game-winning goal against Bemidji State on Jan. 26, 2007...fired off 102 shots...completed season ranked sixth in WCHA overall freshman scoring...averaged 0.78 ppg...scored first collegiate point against Robert Morris on Sept. 29, 2006 with an assist.

#27 MEAGHAN PEZON - 2006-07:

Played in all 37 games for SCSU her first year...fifth on the team in scoring with 23 points (12g, 11a)...scored first collegiate point against Robert Morris on Sept. 30, 2006 with a goal...8-16 PIM...second on the team with 109 shots...charted three power play goals and two game-tying goals...posted first game-winner against Boston University on Jan. 6, 2007...named USCHO.com Offensive Player of the Week after scoring three points (1g, 2a) against #1 Wisconsin on Dec. 8-9 in the NHC.



Pezon



McCarthy

#28 MEGAN MCCARTHY - 2006-07: McCarthy played in 34 games during her sophomore campaign...had a season personal best 18 points (4g, 14a)...13-37 PIM...totaled 81 shots on the season.

#29 KELLY

MEIERHOFER - 2006-07: Voted team's Most Improved Player...appeared in 29 games on the blue line...fired of 16 shots...10-20 PIM...was +6 on the season.



Meierhofer



Newell

#31 KENDALL NEWELL

- 2006-07: The junior goaltender posted a 2-4-4 overall record...set new school record for most ties in a season with four...led the team with a .915 save percentage...backstopped the Huskies with a season high 41 saves against Wisconsin on Oct. 7, 2006...played 630:21 minutes...totaled 301 saves with a 2.67 GAA...named USCHO.com Defensive Player of the Week and WCHA Defensive Player of the Week on Dec. 12, 2006, after posting two ties on Dec. 8-9, 2006, against #1 Wisconsin in the National Hockey Center.

#33 LAURI ST. JACQUES - A - 2006-07: Led the team with six victories between the posts this season and 410 saves...team assistant captain...was 6-9-1 in final campaign...completed SCSU career ranking first with six career ties and second all-time with 2,078 saves and a .895 save percentage...charted an all-time career record of 26-45-6 in 85 games played...named WCHA All-Academic for third time in career...WCHA Defensive Player of the Week on Oct. 3, 2006, during senior season.



St. Jacques



2006-07 SCSU Women's Hockey Final Individual Statistics

SCSU Hockey 2006-07

St. Cloud State Overall Individual Statistics (as of Apr 16, 2007)
All games

Overall: 12-18-7 Conf: 7-16-5 Home: 8-5-5 Away: 4-13-2 Neut: 0-0-0

## Name	SHOTS							PENALTIES				GOALS									
	GP	G	A	Pts	Shots	Pct	+/-	No-Min	Min	Maj	Oth	PP	SH	FG	GW	GTG	OT	HT	PN	UA	Blk
6 Holly Roberts	37	18	17	35	178	.101	+9	18-47	16	1	1	6	3	2	2	0	0	1	0	4	2
14 Laura Fast	37	16	14	30	94	.170	+2	29-58	29	0	0	5	0	2	1	0	0	0	0	2	1
25 Caitlin Hogan	37	12	17	29	102	.118	+7	22-52	21	0	1	5	1	1	1	2	0	0	0	0	1
24 Hailey Clarkson	37	11	14	25	89	.124	+4	14-28	14	0	0	6	0	4	1	0	0	0	0	1	3
27 Meaghan Pezon	37	12	11	23	109	.110	-11	8-16	8	0	0	3	0	0	1	2	0	0	0	5	0
28 Megan McCarthy	34	4	14	18	81	.049	-10	13-37	11	1	1	0	0	1	0	0	0	0	0	0	0
11 Denelle Maguet	36	3	15	18	104	.029	+2	12-24	12	0	0	2	0	0	2	0	1	0	0	3	1
9 Brittnei Kuyper	35	5	10	15	51	.098	+6	9-18	9	0	0	2	0	1	2	0	0	0	0	0	2
21 Sammy Nixon	36	5	6	11	58	.086	-5	5-10	5	0	0	1	0	0	1	0	0	0	0	1	0
17 Marie-Michel Lemieux	37	5	4	9	45	.111	-5	17-34	17	0	0	3	0	0	0	1	0	0	0	0	0
7 Brita Schroeder	36	0	7	7	39	.000	+2	22-44	22	0	0	0	0	0	0	0	0	0	0	0	4
22 Jacqueline Jensen	30	3	2	5	28	.107	-3	8-16	8	0	0	0	0	1	1	0	0	0	0	0	1
3 Tricia Fast	37	0	4	4	18	.000	-5	20-40	20	0	0	0	0	0	0	0	0	0	0	0	2
5 Katie Kemmerer	17	2	1	3	6	.333	+1	0-0	0	0	0	0	0	0	0	0	0	0	0	0	0
19 Amy Currier	33	1	2	3	25	.040	-3	9-18	9	0	0	0	0	0	0	0	0	0	0	0	1
15 Stacy Dey	33	0	3	3	18	.000	0	4-8	4	0	0	0	0	0	0	0	0	0	0	0	0
16 Danielle Hirsch	35	0	3	3	28	.000	-2	30-74	27	2	1	0	0	0	0	0	0	0	0	0	3
2 Abby Krause	12	0	3	3	5	.000	0	1-2	1	0	0	0	0	0	0	0	0	0	0	0	0
23 Michelle Moen	11	2	0	2	6	.333	+2	5-10	5	0	0	0	1	0	0	0	0	0	0	0	0
4 Jenaca Fredheim	19	0	1	1	4	.000	0	4-8	4	0	0	0	0	0	0	0	0	0	0	0	2
18 Bobbie Anderson	14	0	0	0	2	.000	-3	2-4	2	0	0	0	0	0	0	0	0	0	0	0	0
20 Carmen Lizee	15	0	0	0	0	.000	0	0-0	0	0	0	0	0	0	0	0	0	0	0	0	0
29 Kelly Meierhofer	29	0	0	0	16	.000	+6	10-20	10	0	0	0	0	0	0	0	0	0	0	0	2
TM TEAM	18	0	0	0	0	.000	0	3-6	3	0	0	0	0	0	0	0	0	0	0	0	473
Total.....	37	99	148	247	1106	.090	-6	265-574	257	4	4	33	5	12	12	5	1	1	0	16	498
Opponents.....	37	110	160	270	1087	.101	-	253-506	253	0	0	43	5	25	18	2	2	2	0	12	501

## Name	GOAL AVERAGE			SAVES		RECORD			GOALS						
	GP-GS	Minutes	GA	Avg	Saves	Pct	W	L	T	Sho	PP	SH	EN	PEN	SOG
20 Carmen Lizee	15-10	645:51	25	2.32	266	.914	4	5	2	1	11	2	0	0	0
31 Kendall Newell	12-10	630:21	28	2.67	301	.915	2	4	4	0	9	1	0	0	0
33 Lauri St. Jacques	19-17	962:17	54	3.37	410	.884	6	9	1	2	23	2	0	0	0
TM EMPTY NET	18-0	25:30	3	-	0	.000	0	0	0	0	0	0	3	0	0
Total.....	37-0	2263:59	110	2.92	977	.899	12	18	7	3	43	5	3	0	0
Opponents.....	37-0	2263:59	99	2.62	1007	.910	18	12	7	5	33	5	4	0	0



2006-07 SCSU Women's Hockey Final Team Statistics

SCSU Hockey 2006-07
St. Cloud State Overall Team Statistics (as of Apr 16, 2007)
All games

Overall: 12-18-7 Conf: 7-16-5 Home: 8-5-5 Away: 4-13-2 Neut: 0-0-0

Table with 3 columns: TEAM STATISTICS, SCSU, and OPP. Rows include SHOT STATISTICS, POWER PLAYS, GOAL BREAKDOWN, PENALTIES, and ATTENDANCE.

Table with 6 columns: GOALS BY PERIOD, 1, 2, 3, OT, Total. Rows for St. Cloud State and Opponents.

Table with 6 columns: SAVES BY PERIOD, 1, 2, 3, OT, Total. Rows for St. Cloud State and Opponents.



2006-07 SCSU Women's Hockey Final Game Results

SCSU Hockey 2006-07
St. Cloud State Game Results (as of Apr 16, 2007)
All games

Date	Opponent	Score	Shots	Overall Record	Conference Record	Time	Attend	Goalie of record
Sep 29, 2006	ROBERT MORRIS UNIV.	W 4-0	40/20	1- 0- 0	0- 0- 0	1:57	359	Lauri St. Jacques
Sep 30, 2006	ROBERT MORRIS UNIV.	3-3 T OT	46/17	1- 0- 1	0- 0- 0	2:08	379	Kendall Newell
* Oct 06, 2006	at #1 Wisconsin	2-8 L	19/38	1- 1- 1	0- 1- 0	1:58	1005	Lauri St. Jacques
* Oct 07, 2006	at #1 Wisconsin	1-2 L OT	21/43	1- 2- 1	0- 2- 0	2:03	1058	Kendall Newell
* Oct 13, 2006	at Bemidji State	4-6 L	32/28	1- 3- 1	0- 3- 0	2:03	193	Kendall Newell
* Oct 14, 2006	at Bemidji State	2-4 L	27/25	1- 4- 1	0- 4- 0	2:02	251	Lauri St. Jacques
* Oct 20, 2006	OHIO STATE	W 5-4	24/33	2- 4- 1	1- 4- 0	2:07	389	Carmen Lizee
* Oct 21, 2006	OHIO STATE	W 3-2 OT	37/31	3- 4- 1	2- 4- 0	2:13	199	Carmen Lizee
* Oct 27, 2006	#5 MINNESOTA DULUTH	0-2 L	21/25	3- 5- 1	2- 5- 0	2:31	267	Carmen Lizee
* Oct 28, 2006	#5 MINNESOTA DULUTH	0-6 L	31/31	3- 6- 1	2- 6- 0	1:56	234	Lauri St. Jacques
Nov 03, 2006	at Vermont	W 7-0	38/13	4- 6- 1	2- 6- 0	1:55	234	Carmen Lizee
Nov 04, 2006	at Vermont	W 6-0	34/11	5- 6- 1	2- 6- 0	1:50	233	Lauri St. Jacques
* Nov 17, 2006	#4 MINNESOTA	2-5 L	23/34	5- 7- 1	2- 7- 0	2:14	349	Carmen Lizee
* Nov 18, 2006	at Minnesota	1-4 L	21/32	5- 8- 1	2- 8- 0	1:58	1149	Lauri St. Jacques
* Nov 25, 2006	at North Dakota	W 4-1	27/27	6- 8- 1	3- 8- 0	1:58	384	Lauri St. Jacques
* Nov 26, 2006	at North Dakota	5-5 T OT	44/31	6- 8- 2	3- 8- 1	2:15	212	Carmen Lizee
* Dec 01, 2006	MINNESOTA STATE	2-3 L	45/22	6- 9- 2	3- 9- 1	2:00	354	Carmen Lizee
* Dec 02, 2006	MINNESOTA STATE	W 3-2	32/32	7- 9- 2	4- 9- 1	2:12	276	Kendall Newell
* Dec 08, 2006	#2 WISCONSIN	2-2 T OT	20/38	7- 9- 3	4- 9- 2	2:07	214	Kendall Newell
* Dec 09, 2006	#2 WISCONSIN	3-3 T OT	27/34	7- 9- 4	4- 9- 3		324	Kendall Newell
Jan 05, 2007	BOSTON UNIVERSITY	2-2 T OT	29/27	7- 9- 5	4- 9- 3	2:09	197	Kendall Newell
Jan 06, 2007	BOSTON UNIVERSITY	W 4-1	31/35	8- 9- 5	4- 9- 3	2:13	321	Lauri St. Jacques
* Jan 13, 2007	at #9 Minnesota Duluth	2-4 L	27/31	8-10- 5	4-10- 3	2:10	546	Lauri St. Jacques
* Jan 14, 2007	at #9 Minnesota Duluth	0-1 L	17/35	8-11- 5	4-11- 3	2:07	569	Kendall Newell
* Jan 19, 2007	at #10 Ohio State	3-3 T OT	39/41	8-11- 6	4-11- 4	2:10	270	Carmen Lizee
* Jan 20, 2007	at #10 Ohio State	1-6 L	28/39	8-12- 6	4-12- 4	2:08	377	Carmen Lizee
* Jan 26, 2007	BEMIDJI STATE UNIV.	W 3-1	36/19	9-12- 6	5-12- 4	1:54	357	Lauri St. Jacques
* Jan 27, 2007	BEMIDJI STATE UNIV.	2-2 T OT	47/23	9-12- 7	5-12- 5	2:09	354	Lauri St. Jacques
* Feb 02, 2007	at Minnesota	0-4 L	19/31	9-13- 7	5-13- 5	2:03	1232	Lauri St. Jacques
* Feb 03, 2007	#8 MINNESOTA	4-6 L	32/28	9-14- 7	5-14- 5	2:02	641	Lauri St. Jacques
* Feb 09, 2007	at Minnesota State	3-4 L OT	26/34	9-15- 7	5-15- 5	2:18	266	Lauri St. Jacques
* Feb 10, 2007	at Minnesota State	0-2 L	30/19	9-16- 7	5-16- 5	2:05	289	Carmen Lizee
* Feb 16, 2007	NORTH DAKOTA	W 6-1	33/28	10-16- 7	6-16- 5	2:00	221	Carmen Lizee
* Feb 17, 2007	NORTH DAKOTA	W 3-1	30/33	11-16- 7	7-16- 5	1:54	351	Lauri St. Jacques
Feb 23, 2007	at #7 Minnesota Duluth	3-4 L	29/37	11-17- 7	7-16- 5	2:18	520	Lauri St. Jacques
Feb 24, 2007	at #7 Minnesota Duluth	W 3-1	22/36	12-17- 7	7-16- 5	2:10	321	Kendall Newell
Feb 25, 2007	at #7 Minnesota Duluth	1-5 L	22/26	12-18- 7	7-16- 5	2:00	319	Kendall Newell

TEAM RECORD	W-L-T	ATTEND	Dates	Total	Average
Overall:	12-18- 7	Total:	37	15214	411
Conference:	7-16- 5	Home:	18	5786	321
Home:	8- 5- 5	Away:	19	9428	496
Away:	4-13- 2	Neutral:	0	0	0
Neutral:	0- 0- 0				
Overtime:	1- 2- 7				



2006-07 SCSU Women's Hockey Game Summaries

GAME 1

Robert Morris (0-1-0, 0-0-0 CHA) at St. Cloud State (1-0-0, 0-0-0 WCHA)
Date: Sept. 29, 2006

Location: St. Cloud, Minn.
Arena: National Hockey Center
Attendance: 359 Start time: 7:07 pm
End time: 9:04 pm Total time: 1:57

Goals by Period	1	2	3	Total
Robert Morris	0	0	0	0
St. Cloud State	0	2	2	4

1st period - No Scoring. Penalties - Danielle Hirsch, SCSU (tripping) 02:41; Brita Schroeder, SCSU (Interference) 06:57; Danielle Hirsch, SCSU (Cross-Checking) 08:11; Samantha Ullrich, RMU (Body Checking) 15:06.

2nd period - 1, SCSU - Jackie Jensen /1 (Katie Kemmerer/1, Brita Schroeder/1) 05:07. 2, SCSU - Michelle Moen/1 (Hailey Clarkson/1) 14:28. Penalties - Samantha Ullrich, RMU (Tripping) 07:13.

3rd period - 3, SCSU - Holly Roberts/1 (Caitlin Hogan/1, Stacy Dey/1) 10:59 PP. 4, SCSU Katie Kemmerer/1 (Abby Krause/1, Brittni Kuyper/1) 14:14. Penalties - Ashley Barnett, RMU (Interference) 07:26; Ashley Barnett, RMU (Body Checking) 09:40; Kelly Meierhofer, SCSU (Body Checking) 11:38; Jenny Moteleone, RMU (Roughing) 19:35.

Shots on goal: RMU 6-7-7--20; SCSU 13-17-10--40
Power plays: RMU 0-4; SCSU 1-5
Penalties: RMU 5 (10 min.); SCSU 4 (8 min.)
Goalies: RMU, Brianne McLaughlin 0-1-0 (60:00 minutes, 40 shots-36 saves). SCSU, Lauri St. Jacques 1-0-0 (59:56 minutes, 20 shots-20 saves), EMPTY NET (00:04).

Three stars: 1. Lauri St. Jacques 2. Katie Kemmerer 3. Meaghan Pezon

GAME 2

Robert Morris (0-1-1, 0-0-0 CHA) at St. Cloud State (1-0-1, 0-0-0 WCHA)
Date: Sept. 30, 2006

Location: St. Cloud, Minn.
Arena: National Hockey Center
Attendance: 379 Start time: 2:07 pm
End time: 4:15 pm Total time: 2:08

Goals by Period	1	2	3	OT	Total
Robert Morris	1	2	0	0	3
St. Cloud State	1	2	0	0	3

1st period - 1, RMU - Alissa Dorman/1 (Maria Olausson/1, Jacki Gibson/1) 16:27 PP; 1, SCSU - Sammy Nixon/1 (Brittni Kuyper/2, Brita Schroeder/2) 16:46. Penalties - Marie-Michel

Lemieux, SCSU (Holding) 04:03; Jenny Moteleone, RMU (Checking) 09:55; Brita Schroeder, SCSU (Tripping) 11:38; Denelle Maguet, SCSU (High Sticking) 15:15.

2nd period - 2, RMU - Kristen Miles/1 (Chelsea Walkland/1) 04:40; 3, RMU - Kristen Miles/2 (UA) 11:40; 2, SCSU - Holly Roberts/2 (Tricia Fast/1, Denelle Maguet/1) 13:32; 3, SCSU - Meaghan Pezon/1 (Caitlin Hogan/2, Megan McCarthy/1) 14:49. Penalties - None.

3rd period - No Scoring. Penalties - Denelle Maguet, SCSU (Checking) 04:20; Laura Fast, SCSU (Obstruction-Hooking) 12:38.

OT period - No Scoring. Penalties - None.

Shots on goal: RMU 5-7-4-1--17; SCSU 13-14-15-4--46.

Power plays: RMU 1-5; SCSU 0-1
Penalties: RMU 1 (2 min.); SCSU 5 (10 min.)
Goalies: RMU, Brianne McLaughlin 0-1-1 (65:00 minutes, 46 shots-43 saves). SCSU, Carmen Lizee 0-0-0 (30:36 minutes, 9 shots - 7 saves), Kendall Newell 0-0-1 (34:24 minutes, 8 shots- 7 saves).

Three stars: None.

GAME 3

St. Cloud State (1-1-1, 0-1-0 WCHA) at #1 Wisconsin (3-0-0, 1-0-0 WCHA)
Date: Oct. 6, 2006

Location: Madison, Wisc.
Arena: Kohl Center
Attendance: 1005 Start time: 7:07 pm
End time: 9:05 pm Total time: 1:58

Goals by Period	1	2	3	Total
St. Cloud State	1	0	1	2
#1 Wisconsin	4	3	1	8

1st period - 1, WIS - Jinelle Zaugg/3 (Sara Bauer/2, Meaghan Mikkelson/3) 02:17 PP; 2, WIS - Jinelle Zaugg/4 (Bobbi-Jo Slusar/3, Jessie Vetter/1) 05:15 SH; 1, SCSU - Laura Fast/1 (Denelle Maguet/1) 13:31 PP; 3, WIS - Meghan Duggan/2 (Alycia Matthews/2, Erika Lawler/2) 14:04; 4, WIS - Jasmine Giles/2 (Sara Bauer/3, Emily Kranz/1) 15:34. Penalties - Hailey Clarkson, SCSU (Checking) 00:30; Sara Bauer, WIS (Interference) 03:58; Jenaca Fredheim, SCSU (Holding) 09:50; Team, WIS (Too Many On Ice) 11:56.

2nd period - 5, WIS - Jinelle Zaugg/5 (Sara Bauer/4) 05:45; 6, WIS - Sara Bauer/2 (Jinelle Zaugg/4, Meaghan Mikkelson/4) 10:30 PP; 7, WIS - Phoebe Moneleone/1 (Erika Lawler/3, Bobbi-Joe Slusar/4) 15:09. Penalties - Danielle Hirsch, SCSU (Hooking) 09:19; Emily Morris, WIS (Checking) 13:01; Meghan Pezon, SCSU (Checking) 18:04; Angie Keseley, WIS (Tripping) 18:52.

3rd period - 2, SCSU - Katie Kemmerer/2 (Stacy Dey/2) 05:00; 8, WIS - Sara Bauer/3 (Meaghan Mikkelson/5, Jessie Vetter/2) 18:49. Penalties - Meghan Duggan, WIS (Hooking) 01:40; Tricia Fast, SCSU (Holding) 09:20; Heidie Kletzien, WIS (Holding) 09:28; Meaghan Mikkelson, WIS (Hooking) 11:12; Danielle Hirsch, SCSU (Cross-Checking) 15:50; Erika Lawler, WIS (Interference) 17:49.

Shots on goal: SCSU 8-6-5--19; WIS 19-10-9--38.

Power plays: SCSU 1-8; WIS 2-6
Penalties: SCSU 6 (12 min.); WIS 8 (16 min.)
Goalies: SCSU, Lauri St. Jacques 1-1-0, 0-1-0 WCHA (35:02 minutes, 27 shots - 20 saves); Kendall Newell (24:43 minutes, 11 shots - 10 saves); EMPTY NET - 00:15. WIS, Jessie Vetter 2-0-0, 1-0-0 WCHA (60:00 minutes, 19 shots - 17 saves).

Three stars: None.

GAME 4

St. Cloud State (1-2-1, 0-2-0 WCHA) at #1 Wisconsin (4-0-0, 2-0-0 WCHA)
Date: Oct. 7, 2006

Location: Madison, Wisc.
Arena: Kohl Center
Attendance: 1058 Start time: 7:07 pm
End time: 9:10 pm Total time: 2:03

Goals by Period	1	2	3	OT	Total
St. Cloud State	0	0	1	0	1
#1 Wisconsin	0	1	0	1	2

1st period - None. Penalties - Danielle Hirsch, SCSU (Checking) 00:28; Kristen Witting, WIS (Checking) 09:40; Laura Fast, SCSU (Hooking) 10:17; Kayla Hagen, WIS (Hooking) 13:21.

2nd period - 1, WIS - Meaghan Duggan/3 (Erika Lawler/4) 03:27 PP. Penalties - Stacy Dey, SCSU (Holding) 02:58; Tricia Fast, SCSU (Holding) 07:48; Kristen Witting, WIS (Cross-Checking) 12:00; Laura Fast, SCSU (High Sticking); 15:40; Emily Kranz, WIS (Holding) 19:28.

3rd period - 1, SCSU - Meaghan Pezon/2 (UA) 02:35 PP. Penalties - Jasmine Giles, WIS (Checking) 02:13; Laura Fast, SCSU (Elbowing) 11:48.

OT period - 2, WIS - Jinelle Zaugg/6 (Sara Bauer/5, Meaghan Duggan/2) 01:03. Penalties - None.

Shots on goal: SCSU 5-7-9-0--21; WIS 6-17-18-2--43.

Power plays: SCSU 1-5; WIS 1-6
Penalties: SCSU 6 (12 min.); WIS 5 (10 min.)



2006-07 SCSU Women's Hockey Game Summaries

GAME 4 Continued...

Goalies: SCSU, Kendall Newell 0-1-1, 0-1-0 WCHA (61:03 minutes, 43 shots - 41 saves); WIS, Christine Dufour 2-0-0, 1-0-0 WCHA (61:03 minutes, 21 shots - 20 saves).

Three stars: None.

GAME 5

St. Cloud State (1-3-1, 0-3-0 WCHA) at Bemidji State (1-2-0, 1-0-0 WCHA) Date: Oct. 13, 2006 Location: Bemidji, Minn. Arena: John Glas Fieldhouse Attendance: 193 Start time: 7:07 pm End time: 9:10 pm Total time: 2:03

Goals by Period table with columns: Period (1, 2, 3), Total. Rows: St. Cloud State, Bemidji State.

1st period - 1, BSU - Lisa Kissick/1 04:41; 1, SCSU - Marie-Michel Lemieux/1 (Brita Schroeder/3, Tricia Fast/2) 06:32 PP; 2, BSU - Jenn Sadler/2 (Mandy Bambrough/1) 14:20; 3, BSU - Helena Tageson/2 (Kelly Hart/1) 18:07; 2, SCSU - Meaghan Pezon/3 18:35. Penalties - Lisa Kissick, BSU (Hooking) 02:12; Nickki Eckebrecht, BSU (Hooking) 06:19; Helena Tageson, BSU (Checking) 09:15.

2nd period - 4, BSU - Nicole Rawlings/1 15:54. Penalties - Brita Schroeder, SCSU (Tripping) 13:31; Jenn Sadler, BSU (Hooking) 16:37; Helena Tageson, BSU (Interference) 19:10.

3rd period - 3, SCSU - Holly Roberts/3 (Hailey Clarkson/1) 04:31 PP; 4, SCSU - Meaghan Pezon/4 (Holly Roberts/1) 11:27; 5, BSU - Tara Hiscock/1 (Jenn Sadler/1, Kate Robinson/1) 16:37; 6, BSU - Helena Tageson/3 19:57 ENG. Penalties - Helena Tageson, BSU (High Sticking) 04:14; Amy Currier, SCSU (Elbowing) 05:22; Nikki Eckebrecht, BSU (Hooking) 12:26.

Shots on goal: SCSU 9-12-11--32; BSU 10-11-7--28.

Power plays: SCSU 2-7; BSU 0-2

Penalties: SCSU 2 (4 min.); BSU 7 (14 min.)

Goalies: SCSU, Kendall Newell 0-2-1, 0-2-0 WCHA (58:41 minutes, 28 shots - 22 saves - 1 ENG); BSU, Emily Brookshaw 1-2-0, 1-0-0 WCHA (60:00 minutes, 32 shots - 28 saves).

Three stars: 1. Jenn Sadler 2. Helena Tageson 3. Tara Hiscock.

GAME 6

St. Cloud State (1-4-1, 0-4-0 WCHA) at Bemidji State (2-2-0, 2-0-0 WCHA) Date: Oct. 14, 2006 Location: Bemidji, Minn. Arena: John Glas Fieldhouse Attendance: 251 Start time: 2:07 pm End time: 4:09 pm Total time: 2:02

Goals by Period table with columns: Period (1, 2, 3), Total. Rows: St. Cloud State, Bemidji State.

1st period - 1, SCSU - Caitlin Hogan/1 (Holly Roberts/2) 04:36; 1, BSU - Monica Rawlings/1 07:13; 2, BSU - Kate Robinson/1 (Brooke Collins/1, Haley Balcom/2) 11:17 PP. Penalties - Kelly Hart, BSU (Hooking) 07:42; Brita Schroeder, SCSU (Hecking) 09:27; Jeneca Fredheim, SCSU (Holding) 10:11; Laura Fast, SCSU (Cross-Checking) 13:52; Nikki Eckebrecht, BSU (Interference) 14:09; Lisa Kissick, BSU (Hooking) 15:47; Laura Fast, SCSU (Hooking) 16:04; Haley Balcom, BSU (Elbowing) 16:18.

2nd period - 3, BSU - Jenn Sadler/3 (Brooke Collins/2, Haley Balcom/3) 07:37 PP; 4, BSU - Helena Tageson/4 (Kelly Hart/2, Nina Ziegenhals/1) 17:04. Penalties - Tricia Fast, SCSU (Cross-Checking) 06:12; Danielle Hirsch, SCSU (Cross-Checking) 07:14; Nina Ziegenhals, BSU (Tripping) 09:40.

3rd period - 2, Denelle Maguet/1 - EX 16:53. Penalties - Jackie Jensen, SCSU (Checking) 02:18; Nikkie Eckebrecht, BSU (Checking) 15:37; Denelle Maguet, SCSU (Hooking) 19:48.

Shots on goal: SCSU 7-9-11--27; BSU 11-8-6--25.

Power plays: SCSU 1-6; BSU 2-7

Penalties: SCSU 8 (16 min.); BSU 6 (12 min.)

Goalies: SCSU, Lauri St. Jacques 1-2-0, 0-2-0 WCHA (40:00 minutes, 19 shots - 15 saves) - Carmen Lizée 0-0-0 (14:53, 6 shots - 6 saves) BSU, Emily Brookshaw 2-2-0, 2-0-0 WCHA (60:00 minutes, 27 shots - 25 saves).

Three stars: 1. Emily Brookshaw 2. Brooke Collins 3. Haley Balcom.

GAME 7

Ohio State (2-3-0, 0-3-0 WCHA) at St. Cloud State (2-4-1, 1-4-0 WCHA) Date: Oct. 20, 2006 Location: St. Cloud, Minn. Arena: National Hockey Center Attendance: 389 Start time: 7:07 pm End time: 9:14 pm Total time: 2:07

Goals by Period table with columns: Period (1, 2, 3), Total. Rows: Ohio State, St. Cloud State.

1st period - 1, OSU - Shelby Aldous/1 (Erin Keys/5, Jody Heywood/2) 07:23; 1, SCSU - Jackie Jensen/2 (Marie-Michel Lemieux/1, Danielle Hirsch/1) -07:44. Penalties - Tricia Fast, SCSU (Tripping) 00:20; Brita Schroeder, SCSU (Hooking) 03:26; Lacey Schultz, OSU (Hooking) 11:13; Denelle Maguet, SCSU (Hooking) 12:38; Brita Schroeder, SCSU (Interference) 16:33; Tessa Bonhomme, OSU (Body Checking) 17:45.

2nd period - 2, SCSU - Hailey Clarkson/1 (UA) 10:47; 3, SCSU - Caitlin Hogan/2 (Brittni Kuyper/3, Laura Fast/1) 12:48 PP. Penalties - Tricia Fast, SCSU (Interference) 04:12; Jody Heywood, OSU (Hooking) 08:22; Katie Maroney, OSU (Hooking) 12:40; Megan Hostasek, OSU (Tripping) 15:09.

3rd period - 2, OSU - Lisa Chesson/3 (Amber Bowman/6, Erin Keys/6) 04:43 PP; 4, SCSU - Brittni Kuyper/1 (Holly Roberts/3, Laura Fast/2) 07:58 PP; 5, SCSU - Sammy Nixon/2 (Meaghan Pezon/1, Stacy Dey/3) 15:29 PP; 3, OSU - Amber Bowman/4 (Morgan Marziali/2) 16:17; 4, OSU - Lisa Chesson/4 (Tessa Bonhomme/6, Amber Bowman/7) 17:22 PP. Penalties - Holly Roberts, SCSU (Roughing) 02:56; Megan McCarthy, SCSU (Tripping) 04:50; Lacey Schultz, OSU (Hooking) 07:34; Erin Keys, OSU (High Sticking) 13:48; Tricia Fast, SCSU (Hooking) 17:08.

Shots on goal: OSU 12-4-17--33; SCSU 10-9-5--24.

Power plays: OSU 2-8; SCSU 3-7

Penalties: OSU 7 (14 min.); SCSU 8 (16 min.)

Goalies: OSU, Liana Bonanno 1-2-0 (58:24 minutes, 24 shots - 19 saves). SCSU, Carmen Lizée 1-0-0 (60:00 minutes, 33 shots - 29 saves).

Three stars: 1. Brittni Kuyper 2. Amber Bowman 3. Laura Fast

GAME 8

Ohio State (2-4-0, 0-4-0 WCHA) at St. Cloud State (3-4-1, 2-4-0 WCHA) Date: Oct. 21, 2006 Location: St. Cloud, Minn. Arena: National Hockey Center Attendance: 199 Start time: 2:07 pm End time: 4:20 pm Total time: 2:13

Goals by Period table with columns: Period (1, 2, 3), OT, Total. Rows: Ohio State, St. Cloud State.

1st period - Scoring - None. Penalties - Katie Maroney, OSU (Interference) 07:01; Holly Roberts, SCSU (Slashing) 07:24; Tessa Bonhomme, OSU (Checking) 08:24; Olivia Antognolia, OSU (Checking) 13:21; Laura Fast, SCSU (Slashing) 13:48; Lisa Chesson, OSU (Roughing) 15:52.



2006-07 SCSU Women's Hockey Game Summaries

GAME 8 Continued...

2nd period - 1, OSU - Shelby Aldous/2 (Hayley Klassen/2) 05:36; 1, SCSU - Megan McCarthy/1 (Sammy Nixon/1, Tricia Fast/3) 11:04; 2, SCSU - Laura Fast/2 (Denelle Maguet/3, Megan McCarthy/2) 17:57. Penalties - Amber Bowman, OSU (Hooking) 19:56.

3rd period - 2, OSU - Hayley Klassen/2 (Erin Keys/7, Lisa Chesson/6) 05:52. Penalties - Denelle Maguet, SCSU (Hooking) 00:57; Denelle Maguet, SCSU (Roughing) 04:58; Tessa Bonhomme, OSU (Roughing) 04:48; Caitlin Hogan, SCSU (Checking from Behind) 06:15.

Overtime period - 3, SCSU - Denelle Maguet/2 (UA) 03:29 PP. Penalties - Morgan Marziali, OSU (Tripping) 03:24.

Shots on goal: OSU 12-10-7-2--31; SCSU 11-12-11-3--37.

Power plays: OSU 0-4; SCSU 1-6
Penalties: OSU 7 (14 min.); SCSU 5 (10 min.)
Goalies: OSU, Erika Vanderveer 1-2-0 (63:29 minutes, 37 shots - 34 saves). SCSU, Carmen Lizee 2-0-0 (63:29 minutes, 31 shots - 29 saves).

Three stars: 1. Denelle Maguet 2. Megan McCarthy 3. Carmen Lizee

GAME 9

#5 Minnesota Duluth (7-0-0, 7-0-0 WCHA) at St. Cloud State (3-5-1, 2-5-0 WCHA)
Date: Oct. 27, 2006
Location: St. Cloud, Minn.
Arena: National Hockey Center
Attendance: 267 Start time: 7:07 pm
End time: 9:38 pm Total time: 2:31

Goals by Period	1	2	3	Total
Minnesota Duluth	0	1	1	2
St. Cloud State	0	0	0	0

1st period - No Scoring. Penalties - Suvi Vacker, UMD (Tripping) 03:13; Jackie Jensen, SCSU (Obstruction-Hooking) 12:24; Jill Sales, UMD (Interference) 14:52.

2nd period - 1, UMD - Jill Sales/1 (Saara Tuominen/7, Emmanuelle Blais/8) 19:39. Penalties - Danielle Hirsch, SCSU (Cross-Checking) 03:26; Emmanuelle Blais, UMD (Obstruction-Interference) 05:23; Suvi Vacker, UMD (BC) 09:47; Jessica Koizumi, UMD (Roughing) 11:04; Amy Currier, SCSU (Roughing) 11:04; Sara Murray, UMD (Obstruction-Hooking) 15:29; Holly Roberts, SCSU (High Sticking) 16:42; Laura Fast, SCSU (Roughing) 17:55; Elin Holmlöv, UMD (Roughing) 17:55.

3rd period - 2, UMD - Jessica Koizumi/5

(Elin Holmlöv/6, Noemie Marin/4). Penalties - Jaime Rasmussen, UMD (BC) 04:37; Caitlin Hogan, SCSU (Slashing) 06:00; Sara O'Toole, UMD (Roughing) 06:38; Jackie Jensen, SCSU (Roughing) 06:38; Danielle Hirsch, SCSU (Cross-Checking) 06:38; Brita Schroeder, SCSU (BC) 09:45; Caitlin Hogan, SCSU (BC) 12:35; Ashly Waggoner, UMD (Holding) 14:51; Jaime Rasmussen, UMD (BC) 18:40; Myriam Trepanier, UMD (Cross-Checking) 18:53.

Shots on goal: UMD 9-7-9--25; SCSU 3-10-8-21

Power plays: UMD 1-7; SCSU 0-7
Penalties: UMD 12 (24 min.); SCSU 10 (23 min.)
Goalies: UMD, Riitta Schaublin 4-0-0 (60:00 minutes, 21 shots-21 saves). SCSU, Carmen Lizee 2-1-0 (58:40 minutes, 25 shots-23 saves).

Three stars: 1. Jill Sales 2. Jessica Koizumi 3. Riitta Schaublin

GAME 10

#5 Minnesota Duluth (8-0-0, 8-0-0 WCHA) at St. Cloud State (3-6-1, 2-6-0 WCHA)
Date: Oct. 28, 2006
Location: St. Cloud, Minn.
Arena: National Hockey Center
Attendance: 234 Start time: 2:07 pm
End time: 4:03 pm Total time: 1:56

Goals by Period	1	2	3	Total
Minnesota Duluth	2	0	4	6
St. Cloud State	0	0	0	0

1st period - 1, UMD - Sara O'Toole/2 (Emmanuelle Blais/9, Saara Tuominen/8) 01:58 PP; 2, UMD - Saara Tuominen/3 (Myriam Trepanier/6, Sara O'Toole/6) 10:09. Penalties - Danielle Hirsch, SCSU (Body Checking) 01:08; Myriam Trepanier, UMD (Interference) 12:23; Laura Fast, SCSU (Slashing) 18:33.

2nd period - No Scoring. Penalties - Ashley Waggoner, UMD (Tripping) 01:52; Marie-Michel Lemieux, SCSU (Body Checking) 08:11; Jessica Hawkins, UMD (Interference) 12:37; Tawni Mattila, UMD (Body Checking) 18:02.

3rd period - 3, UMD - Sara O'Toole/3 (Jaime Rasmussen/5, Saara Tuominen/9) 06:05; 4, UMD - Emmanuelle Blais/4 (Sara O'Toole/7, Tawni Mattila/4) 10:32 PP; 5, UMD - Sara O'Toole/4 (Tawni Mattila/5, Saara Tuominen/10) 12:51 PP; 6, UMD - Sara O'Toole/5 (Myriam Trepanier/4, Jill Sales/3) 14:27 PP. Penalties - Laura Fast, SCSU (Obstruction Interference) 08:50; Megan McCarthy, SCSU (Holding) 11:19; Tricia Fast, SCSU (Body Checking) 13:02; Tawni Mattila, UMD (Roughing) 13:02; Brita Schroeder, SCSU (Tripping) 13:22; Jessica Hawkins, UMD (Roughing) 19:30.

Shots on goal: UMD 6-9-16--31; SCSU 12-9-10--31

Power plays: UMD 4-6; SCSU 0-5
Penalties: UMD 6 (12 min.); SCSU 7 (14 min.)
Goalies: UMD, Kim Martin 4-0-0 (59:56 minutes, 31 shots-31 saves). SCSU, Lauri St. Jacques 1-3-0 (60:00 minutes, 31 shots-25 saves).

Three stars: 1. Sara O'Toole 2. Kim Martin 3. Saara Tuominen

GAME 11

St. Cloud State (4-6-1, 2-6-0 WCHA) at University of Vermont (2-7-0, 0-4-0 HE)
Date: Nov. 3, 2006
Location: Burlington, VT
Arena: Gutterson Fieldhouse
Attendance: 234 Start time: 7:00 pm ET
End time: 8:55 pm Total time: 1:55

Goals by Period	1	2	3	Total
St. Cloud State	4	2	1	7
Vermont	0	0	0	0

1st period - 1, SCSU - Brittni Kuyper/2 (Denelle Maguet/3) 03:21; 2, SCSU - Megan McCarthy/2 (Brita Schroeder/4, Laura Fast/3) 16:04; 3, SCSU - Holly Roberts/4 (Hailey Clarkson/3, Caitlin Hogan/3) 17:50; 4, SCSU - Caitlin Hogan/3 (Laura Fast/4, Jenaca Fredheim/1) 19:48. Penalties - Marie-Michel Lemieux, SCSU (Checking) 8:42; Hailey Clarkson, SCSU (Cross-Checking) 8:59; Kate Lesniak, UVM (Holding) 14:03; Tricia Fast, SCSU (Checking) 18:29; Melanie Greene, UVM (Contact to Head) 19:16.

2nd period - 5, SCSU - Amy Currier/1 (Tricia Fast/4, Abby Krause/2) 3:12; 6, SCSU - Laura Fast/3 (Brittni Kuyper/4, Caitlin Hogan/4) 16:47. Penalties - Caroline Donahue, UVM (Holding) 3:58; Caitlin Hogan, SCSU (Checking) 9:10; Megan McCarthy, SCSU (Checking) 13:37; Ashley Keane, UVM (Holding) 18:04; Frankie Williams, UVM (Tripping) 20:00.

3rd period - 7, Michelle Moen/2 SHG (Abby Krause/3) 15:36. Penalties - Marie-Michel Lemieux, SCSU (Slashing) 00:26; Danielle Ramirez, UVM (Roughing) 1:13; Kate Lesniak, UVM (Holding) 10:57; Marie-Michel Lemieux, SCSU (Elbowing) 15:20; Michelle Moen, SCSU (Hit After Whistle) 19:01; Kristen Norris, UVM (Hit After Whistle) 19:01; Abby Krause, SCSU (Holding) 19:08.

Shots on goal: SCSU 16-14-8--38; UVM 6-4-3--13.

Power plays: SCSU 0-7; UVM 0-7.
Penalties: SCSU 9 (18 min.); UVM 8 (16 min.)
Goalies: SCSU, Carmen Lizee 3-1-0 (60:00 minutes, 13 shots-13 saves). UVM, Shivaun Siegl 2-6-0 (60:00 minutes, 38 shots-31 saves).



2006-07 SCSU Women's Hockey Game Summaries

GAME 12

St. Cloud State (5-6-1, 2-6-0 WCHA) at University of Vermont (2-8-0, 0-4-0 HE)
Date: Nov. 4, 2006
Location: Burlington, VT
Arena: Gutterson Fieldhouse
Attendance: 233 Start time: 7:00 pm ET
End time: 8:50 pm Total time: 1:50

Goals by Period table with columns 1, 2, 3, Total and rows for St. Cloud State and Vermont.

1st period - 1, SCSU - Hailey Clarkson/4 PP (Sammy Nixon/2, Marie-Michel Lemieux/2) 10:12; 2, SCSU - Hailey Clarkson/5 (Holly Roberts/4, Caitlin Hogan/4) 13:28. Penalties - Danielle Ramirez, UVM (Holding) 9:08; Tricia Fast, SCSU (Tripping) 16:12.

2nd period - 3, SCSU - Caitlin Hogan/4 (Holly Roberts/5, Hailey Clarkson/4) Penalties - Kristen Norris, UVM (Roughing) 00:13; Danielle Ramirez, UVM (Holding the Stick) 7:11; Melanie Greene, UVM (Cross-Checking) 8:07; Holly Roberts, SCSU (Checking) 10:32; Amy Currier, SCSU (Checking) 17:18.

3rd period - 4, SCSU - Holly Roberts/4 (Hailey Clarkson/5) 4:02; 5, SCSU - Holly Roberts/5 (Hailey Clarkson/6, Caitlin Hogan/5) 9:07; 6, SCSU - Holly Roberts/6 SHG (UA) 10:04. Penalties - Tricia Fast, SCSU (Interference) 9:43; Marie-Michel Lemieux, SCSU (Tripping) 11:45; Brita Schroeder, SCSU (Holding) 16:13; Michelle Moen, SCSU (Interference) 17:42.

Shots on goal: SCSU 6-19-9--34; UVM 4-0-7-11.

Power plays: SCSU 1-4; UVM 0-7.

Penalties: SCSU 7 (14 min.); UVM 4 (8 min.)
Goalies: SCSU, Lauri St. Jacques 2-3-0 (60:00 minutes, 11 shots-11 saves). UVM, Jenilee Roy 0-2-0 (60:00 minutes, 34 shots-28 saves).

Three Stars. None.

GAME 13

#4 Minnesota (9-3-1, 6-2-1 WCHA) at St. Cloud State (5-7-1, 2-7-0 WCHA)
Date: Nov. 17, 2006
Location: St. Cloud, Minn.
Arena: National Hockey Center
Attendance: 349 Start time: 2:07 pm
End time: 4:21 pm Total time: 2:14

Goals by Period table with columns 1, 2, 3, Total and rows for Minnesota and St. Cloud State.

1st period - No Scoring. Penalties - Alexandra Zebro, UM (Obstruction Interference) 02:10;

Brita Schroeder, SCSU (Holding) 06:28; Brittany Francis, UM (Hooking) 08:57; Tricia Fast, SCSU (Holding) 17:28; Whitney Graft, UM (Interference) 18:40.

2nd period - 1, UM - Anya Miller/2 PP (Jenelle Philipcz/6, Whitney Graft/6) 01:09; 1, SCSU - Holly Roberts/8 PP (Denelle Maguet/5, Brittini Kuyper/5) 19:33. Penalties - Hailey Clarkson, SCSU (Obstruction Interference) 00:47; Michelle Maunu, UM (Tripping) 16:25; Andrea Nichols, UM (Tripping) 18:04; Bobbi Ross, UM (Checking) 18:57.

3rd period - 2, SCSU - Brittini Kuyper/3 PP (Holly Roberts/6, Denelle Maguet/6) 00:51; 2, UM - Andrea Nichols/8 PP (Anya Miller/8, Jenelle Philipcz/8) 07:56; 3, UM - Gigi Marvin/6 (Dagney Willey/1, Brittany Francis) 15:05; 4 UM - Michelle Maunu/1 (Anya Miller/9) 17:42; 5 UM - Andrea Nichols/9 ENG (Whitney Graft) 19:13. Penalties - Brita Schroeder, SCSU (Tripping) 02:50; Danielle Hirsch, SCSU (Roughing) 03:40; Jenelle Philipczyk, UM (Roughing) 03:40; Laura Fast, SCSU (Holding) 06:13; Michelle Maunu, UM (Checking) 15:32; Laura Fast, SCSU (Holding) 19:46.

Shots on goal: UM 9-6-19--34; SCSU 10-7-6--23.

Power plays: UM 2-5; SCSU 2-7.

Penalties: UM 8 (16 min.); SCSU 7 (14 min.)
Goalies: UM, Brittony Chartier 9-3-1 (59:52 minutes, 23 shots, 21 saves). SCSU, Carmen Lizee 3-2-0 (59:47 minutes, 34 shots, 29 saves - 1 ENG).

Three stars: None.

GAME 14

St. Cloud State (5-8-1, 2-8-0 WCHA) at #4 Minnesota (10-3-1, 7-2-1 WCHA)
Date: Nov. 18, 2006
Location: Minneapolis, Minn.
Arena: Ridder Arena
Attendance: 1149 Start time: 4:07 pm
End time: 6:05 pm Total time: 1:58

Goals by Period table with columns 1, 2, 3, Total and rows for St. Cloud State and Minnesota.

1st period - 1, UM - Becky Wacker/2 (Whitney Graft/10) 02:34; 2, UM - Gigi Marvin/7 (Bobbi Ross/7, Brittany Francis/6) 09:41. Penalties - Melanie Gagnon, UM (Hooking) 07:05; Marie-Michel Lemieux, SCSU (Interference) 10:47; Maggie Souba, UM (High Sticking) 16:47; 16:47; Melanie Gagnon, UM (Slashing) 18:05.

2nd period - 3, UM - Dagney Willey/2 PP (Jenelle Philipcz/8, Whitney Graft/11) 09:44. Penalties - Jaimie Horton, UM (High Stickign) 05:32; Marie-Michel Lemieux, SCSU (Roughing)

05:32; Marie-Michel Lemieux, SCSU (Checking from Behind) 08:30; Jenelle Philipczyk, UM (High Sticking) 10:16; Caitlin Hogan, SCSU (Checking) 12:29; Marie-Michel Lemieux, SCSU (Elbowing) 15:05.

3rd period - 1, SCSU - Meaghan Pezon/5 (UA) 16:09; 4, UM - Gigi Marvin/8 PP (Melanie Gagnon/11, Brittany Francis/6) 18:14. Penalties - Danielle Hirsch, SCSU (Checking) 09:41; Denelle Maguet, SCSU (Checking) 17:58.

Shots on goal: SCSU 7-3-11--21; UM 13-12-7--32.

Power plays: SCSU 0-4; UM 2-6.

Penalties: SCSU 7 (14 min.); UM 5 (10 min.)
Goalies: SCSU, Lauri St. Jacques 2-4-0 (60:00 minutes, 32 shots, 28 saves). UM, Brittony Chartier 10-3-1 (60:00 minutes, 21 shots, 20 saves).

Three stars: 1. Gig Marvin 2. Whitney Graft 3. Becky Wacker

GAME 15

St. Cloud State (6-8-1, 3-8-0 WCHA) at North Dakota (2-11-0, 0-9-0 WCHA)
Date: Nov. 25, 2006
Location: Grand Forks, N.D.
Arena: Ralph Engelstad Arena
Attendance: 384 Start time: 2:07 pm
End time: 4:05 pm Total time: 1:58

Goals by Period table with columns 1, 2, 3, Total and rows for St. Cloud State and North Dakota.

1st period - 1, SCSU - Hailey Clarkson/4 (Caitlin Hogan/7, Meaghan Pezon/2) 18:30 PP. Penaltie - Tricia Fast, SCSU (Interference) 06:18; Michelle Moen, SCSU (Holding the Stick) 10:52; Danielle Hirsch, SCSU (Checking) 12:44; Samantha Bowers, UND (Holding) 16:29.

2nd period - 2, SCSU - Denelle Maguet/3 (Unassisted) 01:29; 1, UND - Jade Schirado/1 (Aynsley Allen/3) 03:42; 3, SCSU - Brittini Kuyper/4 (Laura Fast/5, Denelle Maguet/7) 12:56. Penalties - Christey Allen, UND (Holding) 07:36; Caitlin Hogan, SCSU (Tripping) 13:22; Samantha Bowers, UND (Tripping) 19:10.

3rd period - 4, Marie-Michel Lemieux/ 3 (Sammy Nixon/3, Megan McCarthy/3) 07:31. Penalties - Danielle Hirsch, SCSU (Roughing) 04:17; Christy Carlson, UND (Tripping) 04:37; Kelsey Fletcher, UND (Tripping) 08:43; Hailey Clarkson, SCSU (Hooking) 17:28; A. Gagnon-Laplante, UND (Checking) 17:55; Brita Schroeder, SCSU (Slashing) 19:26.



2006-07 SCSU Women's Hockey Game Summaries

GAME 15 Continued...

Shots on goal: SCSU 5-8-14--27; UND 11-6-10--27.
Power plays: SCSU 1-5; UND 0-7.
Penalties: SCSU 7 (14 min.); UND 6 (12 min.)
Goalies: SCSU, Lauri St. Jacques 3-4-0 (59:41 minutes, 27 shots, 26 saves). UND, Brittany Kirkham 2-10-0 (60:00 minutes, 27 shots, 23 saves).

Three stars: None.

GAME 16

St. Cloud State (6-8-2, 3-8-1 WCHA) at North Dakota (2-11-1, 0-9-1 WCHA)
Date: Nov. 26, 2006
Location: Grand Forks, N.D.
Arena: Ralph Engelstad Arena
Attendance: 212 Start time: 2:07 pm
End time: 4:22 pm Total time: 2:15

Goals by Period	1	2	3	OT	Total
St. Cloud State	0	3	2	0 -	5
North Dakota	2	1	2	0 -	5

1st period - 1, UND - Alyssa Johnson/1 (Unassisted) 01:01 PP; 2, UND - Samantha Bowers/3 (Unassisted) 04:29 PP. Penalties - Caitlin Hogan, SCSU (Goaltender Interference) 00:29; Megan McCarthy, SCSU (Hooking) 02:40; Randi Motsko, UND (Hooking) 12:52; Christy Carlson, UND (Hooking) 14:08; Cassandra Flanagan, UND (Holding) 19:13.

2nd period - 3, UND - Kelsey Fletcher/1 (Ashley Lynch/1) 08:37 PP; 1, SCSU - Hailey Clarkson/5 (Laura Fast/6, Brita Schroeder/5) 10:37; 2, SCSU - Hailey Clarkson/6 (Caitlin Hogan/8, Meaghan Pezon/3) 12:25 PP; 3, SCSU - Sammy Nixon/3 (Danielle Hirsch/2, Megan McCarthy/4) 16:42. Penalties - Tricia Fast, SCSU (Tripping) 06:54; Jenaca Fredheim, SCSU (Roughing) 07:25; A. Gagnon-Laplante, UND (High Sticking) 07:25; Alex Williams, UND (Interference) 09:36; Kelsey Fletcher, UND (Holding) 11:09; Randi Motsko, UND (Hooking) 13:43; Laura Fast, SCSU (Checking from Behind) 13:43; Caitlin Hogan, SCSU (Obstruction-Hooking) 13:48.

3rd period - 4, UND - Randi Motsko/3 (Samantha Bowers/1, Ashley Lynch/2) 02:12; 5, UND - Andrea Cook/1 (Jenny Porter/1, Aynsley Allen/4) 04:10; 4, SCSU - Laura Fast/6 (Unassisted) 06:39; 5, SCSU - Marie-Michel Lemieux/3 (Megan McCarthy/5, Holly Roberts/7) 10:21 PP. Penalties - Kelly Meierhofer, SCSU (Holding) 00:22; Randi Motsko, UND (High Sticking) 08:37.

Overtime period - No Scoring. Penalties -

Danielle Hirsch, SCSU (Hooking) 03:56.

Shots on goal: SCSU 18-13-12-1--41; UND 7-11-12-1--31.
Power plays: SCSU 3-6; UND 4-6.
Penalties: SCSU 8 (16 min.); UND 8 (16 min.)
Goalies: SCSU, Lauri St. Jacques (44:10 minutes, 27 shots, 22 saves); SCSU, Carmen Lizée 3-2-1 (22:50 minutes, 4 shots, 4 saves). UND, Brittany Kirkham 2-10-1 (65:00 minutes, 44 shots, 39 saves).

Three stars: None.

GAME 17

Minnesota State (6-9-1, 4-8-1 WCHA) at St. Cloud State (6-9-2, 3-9-1 WCHA)
Date: Dec. 1, 2006
Location: St. Cloud, Minn.
Arena: National Hockey Center
Attendance: 354 Start time: 7:07 pm
End time: 9:07 pm Total time: 2:00

Goals by Period	1	2	3	Total
Minnesota State	1	1	1 -	3
St. Cloud State	1	1	0 -	2

1st period - 1, SCSU - Laura Fast/5 (Megan McCarthy/6, Meaghan Pezon) 01:53; 1, MSU - Shera Vis/4 (Holly Snyder/1) 06:47. Penalties - Laura Fast, SCSU (Slashing) 05:40; Jenaca Fredheim, SCSU (Interference) 15:58; Shera Vis, MSU (Interference) 16:17; Caitlin Hogan, SCSU (Roughing) 17:20; Sammy Miller, MSU (Slashing) 17:20.

2nd period - 2, SCSU - Holly Roberts/9 (Hailey Clarkson/7) 01:14; 2, MSU - Kristina Bunker/5 (Lindsay Macy/8) 08:09 PP. Penalties - Laura Fast, SCSU (Interference) 02:05; SCSU Team (Too many on ice) 03:46; Danielle Hirsch, SCSU (Hooking) 06:50; Christina Lee, MSU (Body Checking) 17:37.

3rd period - 3, MSU - Amanda Stohr/2 (Maggie Fisher/7) 06:47 SH. Penalties - Laura Fast, SCSU (Hooking) 00:56; Sammy Miller, MSU (Interference) 05:01; Caitlin Hogan, SCSU (Interference) 14:21.

Shots on goal: MSU 5-8-9--22; SCSU 17-14-14--45.
Power plays: MSU 2-7; SCSU 0-3.
Penalties: MSU 4 (8 min.); SCSU 8 (16 min.)
Goalies: MSU, Britni Kehler 6-8-1 (60:00 minutes, 45 shots, 43 saves). SCSU, Carmen Lizée 3-3-1 (58:21 minutes, 22 shots, 19 saves).

Three stars: 1. Britni Kehler 2. Holly Roberts 3. Amanda Stohr

GAME 18

Minnesota State (6-10-1, 4-9-1 WCHA) at St. Cloud State (7-9-2, 4-9-1 WCHA)
Date: Dec. 2, 2006
Location: St. Cloud, Minn.
Arena: National Hockey Center
Attendance: 276 Start time: 2:07 pm
End time: 4:19 pm Total time: 2:12

Goals by Period	1	2	3	Total
Minnesota State	1	1	0 -	2
St. Cloud State	0	3	0 -	3

1st period - 1, MSU - Amanda Stohr/3 (Maggie Fisher/8, Sammy Miller/2) 06:27. Penalties - Danielle Hirsch, SCSU (Slashing) 11:48; Sammy Miller, MSU (Body Checking) 14:48; Kala Buganski, MSU (Tripping) 18:05.

2nd period - 1, SCSU - Hailey Clarkson/7 (Laura Fast/7, Meaghan Pezon/5) 05:44 PP; 2, SCSU - Caitlin Hogan/5 (Laura Fast/8, Brita Schroeder/5) 07:49 PP; 3, SCSU - Holly Roberts/10 (Hailey Clarkson/8, Denelle Maguet/8) 12:50; 2, MSU - Christina Lee/6 (Kala Buganski/5) 19:43. Penalties - Christina Lee, MSU (Slashing) 02:06; Holly Snyder, MSU (Interference) 04:49; Lindsay Macy, MSU (Roughing) 07:23; Amy Currier, SCSU (Elbowing) 09:09; Denelle Maguet, SCSU (Tripping) 14:09.

3rd period - Scoring - None. Penalties - Danielle Hirsch, SCSU (Slashing) 00:40; Lindsay Macy, MSU (Hooking) 01:24; Maggie Fisher, MSU (Hooking) 03:09.

Shots on goal: MSU 14-14-4--32; SCSU 5-13-14--32.

Power plays: MSU 0-4; SCSU 2-7.
Penalties: MSU 7 (14 min.); SCSU 4 (8 min.)
Goalies: MSU, Britni Kehler 6-9-1 (59:49 minutes, 32 shots, 29 saves). SCSU, Kendall Newell 1-2-1 (59:19 minutes, 32 shots, 30 saves).

Three stars: 1. Hailey Clarkson 2. Holly Roberts 3. Kendall Newell.



2006-07 SCSU Women's Hockey Game Summaries

GAME 19

#2 Wisconsin (16-1-2, 12-1-2) at St. Cloud State (7-9-3, 4-9-2 WCHA) Date: Dec. 8, 2006 Location: St. Cloud, Minn. Arena: National Hockey Center Attendance: 214 Start time: 2:07 pm End time: 4:14 pm Total time: 2:07

Goals by Period table with columns: Period (1, 2, 3, OT), Total. Rows: Wisconsin (0, 1, 1, 0, 2), St. Cloud State (0, 2, 0, 0, 2)

1st period - Scoring - None. Penalties - Emily Morris, UW (Hooking) 01:14; Meaghan Mikkelsen, UW (Hooking) 06:32; Bobbie Anderson, SCSU (Checking) 09:08; Bobbi-Jo Slusar (Tripping) 11:09; Laura Fast, SCSU (Interference) 11:19; Holly Roberts, SCSU (Hooking).

2nd period - 1, UW - Phoebe Monteleone/5 (Kayla Hagen/5) 03:14; 1, SCSU - Laura Fast/6 (Meaghan Pezon/6) 09:54; 2, SCSU - Holly Roberts/11 (Denelle Maguet/9, Brittini Kuyper/6) 19:46 PPG. Penalties - Laura Fast, SCSU (Hooking) 13:42; Meghan Duggan, UW (Hooking) 15:13; Kristen Witting, UW (Hooking) 18:44.

3rd period - 2, UW - Kyla Sanders/10 (Meaghan Mikkelsen/6, Bobbi-Jo Slusar/6) 08:46. Penalties - Sara Bauer, UW (Hooking) 01:17; Caitlin Hogan, SCSU (High Sticking) 08:23; Tricia Fast, SCSU (Checking) 12:38.

Overtime - No Scoring. No Penalties.

Shots on goal: UW 8-16-11-3--38; SCSU 7-4-4-5--20. Power plays: UW 1-6; SCSU 1-6. Penalties: UW 6 (12 min.); SCSU 6 (12 min.) Goalies: UW, Jessie Vetter 9-1-2 (64:59 minutes, 20 shots, 18 saves). SCSU, Kendall Newell 1-2-2 (65:00 minutes, 38 shots, 36 saves).

Three stars: 1. Kendall Newell 2. Kyla Sanders 3. Holly Roberts.

GAME 20

#2 Wisconsin (16-1-3, 12-1-3 WCHA) at St. Cloud State (7-9-4, 4-9-3 WCHA) Date: Dec. 9, 2006 Location: St. Cloud, Minn. Arena: National Hockey Center Attendance: 324 Start time: 2:07 pm End time: 4:17 pm Total time: 2:10

Goals by Period table with columns: Period (1, 2, 3, OT), Total. Rows: Wisconsin (1, 2, 0, 0, 3), St. Cloud State (0, 0, 3, 0, 3)

1st period - 1, UW - Meghan Duggan/13 (Kristen Witting/3, Jinelle Zaugg/13). Penalties - Sara Bauer, UW (Body Checking) 04:50; Jackie

Jensen, SCSU (Hooking) 07:13; Hailey Clarkson, SCSU (Body Checking) 11:41.

2nd period - 2, UW - Sara Bauer/11 (Unassisted) 01:29 PPG; 3, UW - Bobbi-Jo Slusar/6 (Meaghan Mikkelsen/19, Angie Keseley/10) 10:56 PPG. Penalties - Caitlin Hogan, SCSU (Tripping) 00:34; Bobbi-Jo Slusar, UW (Obstruction Interference) 01:41; Meghan Duggan, UW (Body Checking) 06:50; Emily Morris, UW (High Sticking) 07:22; Holly Roberts, SCSU (Interference) 09:09.

3rd period - 1, SCSU - Marie-Michel Lemieux/4 (Megan McCarthy/7, Sammy Nixon/4) 04:31; 2, SCSU - Meaghan Pezon/5 (Unassisted) 12:38; 3, SCSU - Caitlin Hogan/6 (Meaghan Pezon/7) 19:41 EX. Penalties - Laura Fast, SCSU (Slashing) 01:42; Tricia Fast, SCSU (Slashing) 10:06; Bobbi-Jo Slusar, UW (Obstruction Interference) 14:06; Laura Fast, SCSU (Holding) 18:57.

Overtime - No Scoring. No Penalties.

Shots on goal: UW 13-16-3-2--34; SCSU 8-8-11-0--27. Power plays: UW 2-7; SCSU 0-5. Penalties: UW 5 (10 min.); SCSU 7 (14 min.) Goalies: UW, Christine Dufour 7-0-1 (64:28 minutes, 27 shots, 24 saves). SCSU, Kendall Newell 1-2-3 (64:19 minutes, 34 shots, 31 saves).

Three stars: 1. Meaghan Pezon 2. Sara Bauer 3. Caitlin Hogan.

GAME 21

Boston University (11-6-2, 3-5-1 HE) at St. Cloud State (7-9-5, 4-9-3 WCHA) Date: Jan. 5, 2007 Location: St. Cloud, Minn. Arena: National Hockey Center Attendance: 197 Start time: 2:07 pm End time: 4:16 pm Total time: 2:09

Goals by Period table with columns: Period (1, 2, 3, OT), Total. Rows: Boston University (0, 1, 1, 0, 2), St. Cloud State (1, 0, 1, 0, 2)

1st period - 1, SCSU - Holly Roberts/12 (Caitlin Hogan/9, Brittini Kuyper/7) 04:04. Penalties - Megan McCarthy, SCSU (Body Checking) 09:12; Kelly Meierhofer, SCSU (Interference) 11:27; Jonnie Bloemers, BU (Slashing) 11:56; Amanda Shaw, BU (CTH Roughing) 12:18; Erin Seman, BU (Interference) 18:37.

2nd period - 1, BU - Gina Kearns/8 (Erin Seman/10) 16:10. Penalties - Stacy Dey, SCSU (interference) 09:18; Jonnie Bloemers, BU (Slashing) 14:04; Marie-Michel Lemieux, SCSU (Body Checking) 15:56; Cara Hendry, BU (Elbowing) 16:34; Hailey Clarkson, SCSU (Roughing) 19:54; Erin Seman, BU (Roughing) 19:54.

3rd period - 2, SCSU - Holly Roberts/13 (Unassisted) 00:38; 2, BU - Cara Hendry/6 (Sarah Appleton/5, Nicki Wiart/3) 08:24. Penalties - Jackie Jensen, SCSU (Body Checking) 03:07; Erin Seman, BU (Interference) 03:36; Sammy Nixon, SCSU (Slashing) 06:38; Sammy Nixon, SCSU (Body Checking) 08:57; Danielle Hirsch, SCSU (Cross-Checking) 11:05; Melissa Anderson, BU (Tripping) 16:16.

Overtime - No Scoring. Penalties - Sarah Appleton, BU (Cross-Checking) 01:25.

Shots on goal: BU 6-7-13-1--27; SCSU 8-9-7-5--29. Power plays: BU 2-8; SCSU 0-8. Penalties: BU 9 (18 min.); SCSU 9 (18 min.) Goalies: BU, Allyse Wilcox 7-5-1 (64:45 minutes, 29 shots, 27 saves). SCSU, Kendall Newell 1-2-4 (65:00 minutes, 27 shots, 25 saves).

Three stars: 1. Holly Roberts 2. Kendall Newell 3. Cara Hendry.

GAME 22

Boston University (11-7-2, 3-5-1 HE) at St. Cloud State (8-9-5, 4-9-3 WCHA) Date: Jan. 6, 2007 Location: St. Cloud, Minn. Arena: National Hockey Center Attendance: 321 Start time: 2:07 pm End time: 4:20 pm Total time: 2:13

Goals by Period table with columns: Period (1, 2, 3), Total. Rows: Boston University (1, 0, 0, 1), St. Cloud State (1, 1, 2, 4)

1st period - 1, BU - Melissa Anderson/9 (Kelley Karnan/1, Genevieve Laing/3) 10:01; 1, SCSU - Hailey Clarkson/8 (Caitlin Hogan/10, Holly Roberts/8) 10:36. Penalties - Jessica Lortie, BU (Hooking) 02:49; Amanda Shaw, BU (Charging) 04:58; Marie-Michel Lemieux, SCSU (Slashing the Goalie) 04:58; Melissa Anderson, BU (Body Checking) 05:59; Amanda Sahw, BU (Interference) 07:34; Brita Schroeder, SCSU (Tripping) 08:12; Sammy Nixon, SCSU (Faceoff Interference) 12:09; Jonnie Bloemers, BU (Grasping the Face Mask) 18:37; Brittini Kuyper, SCSU (Roughing) 18:37.

2nd period - 2, Meaghan Pezon/7 (Megan McCarthy/8, Brittini Kuyper/8) 01:02. Penalties - Caitlin Hogan, SCSU (Slashing) 04:08; Sammy Nixon, SCSU (Roughing) 09:06; Nicki Wiart, BU (Holding) 09:06; Caitlin Hogan, SCSU (Face-off Interference) 09:13; Brittini Kuyper, SCSU (Charging) 09:52; Melissa Anderson, BU (Slashing the Goalie) 09:52; Brita Schroeder, SCSU (Holding) 14:12; Holly Roberts, SCSU (Checking from Behind) 20:00; Holly Roberts, SCSU (10 min. - Game Misconduct) 20:00.



2006-07 SCSU Women's Hockey Game Summaries

GAME 22 Continued...

3rd period - 3, SCSU - Meaghan Pezon/8 (Unassisted) 07:51; 4, SCSU - Caitlin Hogan/7 (Sammy Nixon/5, Marie-Michel Lemieux/3) ENG.

Penalties - Erin Seman, BU (Body Checking) 00:35; Amanda Shaw, BU (Slashing) 06:32; Marie-Michel Lemieux, SCSU (Tripping) 06:41; SCSU Team (Too Many on Ice) 09:30; Melissa Anderson, BU (Body Checking) 12:44; Laura Fast, SCSU (Interference) 12:44.

Shots on goal: BU 7-13-15--35; SCSU 12-6-13-31.

Power plays: BU 1-8; SCSU 0-4.

Penalties: BU 10 (20 min.); SCSU 14 (39 min.)
Goalies: BU, Melissa Haber 4-2-1 (57:39 minutes, 30 shots, 27 saves, 1 ENG). SCSU, Lauri St. Jacques 4-4-0 (60:00 minutes, 35 shots, 34 saves).

Three stars: 1. Meaghan Pezon 2. Lauri St. Jacques 3. Caitlin Hogan.

GAME 23

St. Cloud State (8-10-5, 4-10-3 WCHA) at Minnesota Duluth (12-7-2, 11-5-1 WCHA)
Date: Jan. 13, 2007

Location: Duluth, Minn.

Arena: DECC

Attendance: 546 Start time: 3:07 pm

End time: 5:17 pm Total time: 2:10

Goals by Period	1	2	3	Total
St. Cloud State	1	1	0	2
Minnesota Duluth	1	0	3	4

1st period - 1, UMD - Karine Demeule/7 (Noemie Marin/10, Jessica Koizumi/12) 03:43; 1, SCSU - Jackie Jensen/3 (Marie-Michel Lemieux/4, Holly Roberts/9) 17:35. Penalties - Kelly Meierhofer, SCSU (Tripping) 08:52; Jaime Rasmussen, UMD (Checking) 15:33; Jessica Hawkins, UMD (Checking) 19:32.

2nd period - 2, SCSU - Caitlin Hogan/8 (Denelle Maguet/10, Hailey Clarkson/9) 11:24. Penalties - Danielle Hirsch, SCSU (Checking) 02:46; Megan McCarthy, SCSU (Tripping) 05:25; Brittini Kuyper, SCSU (Roughing) 07:10; Michaela Lanzl, UMD (Roughing) 07:10; Ashly Waggoner, UMD (Interference) 08:14; Meaghan Pezon, SCSU (Hooking) 08:51; Tawni Mattila, UMD (Hooking) 09:47; Ashly Waggoner, UMD (Checking) 12:35; Brita Schroeder, SCSU (Hooking) 14:20.

3rd period - 2, UMD - Michaela Lanzl/4 (Saara Tuominen/13) 01:22; 3, UMD - Jill Sales/4 (Jessica Koizumi/11) 02:36; 4, UMD - Karine Demeule/8 (UA) 19:11 ENG.

Penalties - Caitlin Hogan, SCSU (Checking) 09:06; Emmanuelle Blais, UMD (Interference) 10:22; Emmanuelle Blais, UMD (Checking) 15:45; Caitlin Hogan, SCSU (Checking from Behind) 19:51; Caitlin Hogan, SCSU (5 min. game misconduct) 19:51.

Shots on goal: SCSU 6-12-9--27; UMD 10-14-7--31.

Power plays: SCSU 1-7; UMD 0-6.

Penalties: SCSU 9 (26 min.); UMD 8 (16 min.)
Goalies: SCSU, Lauri St. Jacques 4-5-0 (59:03 minutes, 30 shots, 27 saves). UMD, Riitta Schaublin 6-3-2 (59:50 minutes, 27 shots, 25 saves).

Three stars: None.

GAME 24

St. Cloud State (8-11-5, 4-11-3 WCHA) at Minnesota Duluth (13-7-2, 12-5-1 WCHA)
Date: Jan. 14, 2007

Location: Duluth, Minn.

Arena: DECC

Attendance: 569 Start time: 3:07 pm

End time: 5:00 pm Total time: 1:53

Goals by Period	1	2	3	Total
St. Cloud State	0	0	0	0
Minnesota Duluth	0	0	1	1

1st period - Scoring, None. Penalties - Stacy Dey, SCSU (Elbowing) 10:24.

2nd period - Scoring, None. Penalties - Jessica Hawkins, UMD (Checking) 12:34; Holly Roberts, SCSU (Tripping) 17:45; Saara Tuominen, UMD (Obstruction-Holding) 18:52.

3rd period - 1, UMD - Michaela Lanzl/5 (Jaime Rasmussen/8, Noemie Marin/13) 15:12. Penalties - Erin Olson, UMD (Checking) 03:22; Jackie Jensen, SCSU (Hooking) 06:07; Suvi Vacker, UMD (Obstruction-Interference) 15:35.

Shots on goal: SCSU 5-5-7--17; UMD 8-16-11-35.

Power plays: SCSU 0-4; UMD 0-3.

Penalties: SCSU 3 (6 min.); UMD 4 (8 min.)
Goalies: SCSU, Kendall Newell 1-3-4 (57:56 minutes, 35 shots, 34 saves). UMD, Riitta Schaublin 7-3-2 (60:00 minutes, 17 shots, 17 saves).

Three stars: None.

GAME 25

St. Cloud State (8-11-8, 4-11-4 WCHA) at #10 Ohio State (13-9-3, 8-8-3 WCHA)

Date: Jan. 19, 2007

Location: Columbus, Ohio

Arena: OSU Ice Rink

Attendance: 270 Start time: 6:07 pm

End time: 8:17 pm Total time: 2:10

Goals by Period	1	2	3	OT	Total
St. Cloud State	0	2	1	0	3
Ohio State	3	0	0	0	3

1st period - 1, OSU - Megan Hostasek/1 (Shelby Aldous/8) 09:19; 2, OSU - Morgan Marziani/11 (Tessa Bonhomme/15; Erin Keys/19) 10:21; 3, OSU - Erin Keys/14 (Amber Bowman/22; Lisa Chesson/18) 18:55. Penalties - Megan Hostasek, OSU (Checking) - 03:28; Tricia Fast, SCSU (Obstruction-Interference) 16:56.

2nd period - 1, SCSU - Laura Fast/7 (Megan McCarthy/9; Meaghan Pezon/8) 02:25; 2, SCSU - Caitlin Hogan/9 (Holly Roberts/10; Hailey Clarkson/10) 02:59. Penalties - Tessa Bonhomme, OSU (Checking) 00:16; Lisa Chesson, OSU (Tripping) 06:25; Erin Keys, OSU (Hooking) 06:42; Hailey Clarkson, SCSU (High Sticking) 10:41; Meaghan Pezon, SCSU (Checking) 13:11; Lacey Schultz, OSU (Tripping) 18:37.

3rd period - 3, SCSU - Caitlin Hogan/10 (Holly Roberts/11; Hailey Clarkson/11) 03:40. Penalties - Lacey Schultz, OSU (Checking) 02:31; Megan McCarthy, SCSU (Checking from Behind) 08:27; Megan McCarthy, SCSU (Game Misconduct - 10 min.) 08:27; Hayley Klassen, OSU (Tripping) 15:46.

Overtime period - No Scoring. No Penalties.

Shots on goal: SCSU 6-22-8-3--39; OSU 12-10-15-4--41.

Power plays: SCSU 1-7; OSU 1-4.

Penalties: SCSU 5 (21 min.); OSU 7 (14 min.)
Goalies: SCSU, Kendall Newell (20:00 minutes, 12 shots, 9 saves); Carmen Lizée 3-3-2 (45:00 minutes, 29 shots, 29 saves). OSU, Erika Vanderveer 12-6-2 (65:00 minutes, 39 shots, 36 saves).

Three stars: 1. Caitlin Hogan 2. Erin Keys 3. Erika Vanderveer



2006-07 SCSU Women's Hockey Game Summaries

GAME 26

St. Cloud State (8-12-6, 4-12-4 WCHA) at #10 Ohio State (14-9-3, 9-8-3 WCHA)
Date: Jan. 20, 2007
Location: Columbus, Ohio
Arena: OSU Ice Rink
Attendance: 377 Start time: 3:07 pm
End time: 5:15 pm Total time: 2:08

Goals by Period table with columns: Goals by Period, 1, 2, 3, Total. Rows for St. Cloud State and Ohio State.

1st period - 1, OSU - Lisa Chesson/8 (Mallory Peckels/12; Amber Bowman/23) PPG 07:07; 2, OSU - Erin Keys/15 (Mallory Peckels/13; Tessa Bonhomme/17) 15:12. Penalties - Danielle Hirsch, SCSU (Tripping) 05:48; Sammy Nixon, SCSU (Tripping) 08:34; Mallory Peckels, OSU (Obstruction Interference) 12:26.

2nd period - 3, OSU - Jody Heywood/5 (Shelby Aldous/9) -02:59; 4, OSU - Raelyn LaRocque/3 (Unassisted) 17:11. Penalties - Danielle Hirsch, SCSU (Checking) 10:51; Rachel Davis, OSU (Tripping) 14:47; Brita Schroeder, SCSU (Checking) 18:41.

3rd period - 5, OSU - Shelby Aldous/4 (Jody Heywood/5) 05:52. 1, SCSU - Marie-Michel Lemieux (Holly Roberts/12; Caitlin Hogan/11) EX 13:50; 6, OSU - Shelby Aldous/5 (Rachel Davis/3; Jody Heywood/6) PPG 15:49. Penalties - Tricia Fast, SCSU (Interference) 01:16; Rachel Davis, OSU (Checking) 07:27; Katie Maroney, OSU (High Sticking) 10:04; Amber Bowman, OSU (Tripping) 12:03; Krysta Skarda, OSU (Hooking) 13:29; Laura Fast, SCSU (Checking) 15:32; Amber Bowman, OSU (Checking) 17:09; Lacey Schultz, OSU (Cross-Checking) 18:10; Tess Bonhomme, OSU (Slashing) 19:01; Hailey Clarkson, SCSU (Slashing) 19:01; Amber Bowman, OSU (Roughing) 19:58; Jackie Jensen, SCSU (Roughing) 19:58; Amber Bowman, OSU (Roughing) 19:58; Megan McCarthy, SCSU (Roughing); 19:58.

Shots on goal: SCSU 7-7-14-28; OSU 17-11-11-39.
Power plays: SCSU 1-7; OSU 2-6.
Penalties: SCSU 10 (20 min.); OSU 11 (22 min.)

Goalies: SCSU, Carmen Lizee 3-4-2 (45:43 minutes, 34 shots, 29 saves); Lauri St. Jacques (10:43 minutes, 5 shots, 4 saves). OSU, Erika Vanderveer 13-6-2 (46:59 minutes, 15 shots, 15 saves); Liana Bonanno (12:33 minutes, 13 shots, 12 saves).

Three stars: 1. Shelby Aldous 2. Jody Heywood 3. Erika Vanderveer

GAME 27

Bemidji State Univ. (10-14-3, 8-11-2 WCHA) at St. Cloud State (9-12-6, 5-12-4 WCHA)
Date: Jan. 26, 2007
Location: St. Cloud, Minn.
Arena: Nat'l Hockey Center
Attendance: 357 Start time: 7:07 pm
End time: 9:01 pm Total time: 1:54

Goals by Period table with columns: Goals by Period, 1, 2, 3, Total. Rows for Bemidji State and St. Cloud State.

1st period - 1, SCSU - Holly Roberts/14 (Caitlin Hogan/12) 12:37 SHG. Penalties - Danielle Hirsch, SCSU (Interference) 05:50; Haley Balcom, BSU (Obstruction Interference) 08:36; Michelle Moen, SCSU (Hooking) 11:01; Jackie Robertson, BSU (Obstruction Interference) 13:31; Marie-Michel Lemieux, SCSU (Slashing) 14:55.

2nd period - No Scoring. Penalties - Brooke Collins, BSU (Tripping) 08:29; Nikkie Ekebrecht, BSU (Hooking); 14:03; Haley Balcom, BSU (Hooking) 19:25.

3rd period - 1, BSU - Jenn Sadler/8 (Unassisted) 01:49; 2, SCSU - Caitlin Hogan/11 (Denelle Maguet/11, Jackie Jensen/1) 14:40; 3, SCSU - Holly Roberts/15 (Unassisted) 19:34 SHG/ENG. Penalties - TEAM, SCSU (Too many on ice) 04:53; Jackie Robertson, BSU (Hooking) 08:27; Jamie LeDuc, BSU (Tripping) 14:27; Hailey Clarkson, SCSU (Tripping) 17:46.

Shots on goal: BSU 10-1-8--19; SCSU 12-9-15--36.
Power plays: BSU 0-5; SCSU 1-7.
Penalties: BSU 7 (14 min.); SCSU 5 (10 min.)

Goalies: BSU, Emily Brookshaw 9-14-3 (59:32 minutes, 36 shots, 33 saves); SCSU, Lauri St. Jacques 5-5-0 (59:36 minutes, 19 shots, 18 saves).

Three stars: 1. Caitlin Hogan 2. Holly Roberts 3. Emily Brookshaw.

GAME 28

Bemidji State Univ. (10-14-4, 8-11-3 WCHA) at St. Cloud State (9-12-7, 5-12-5 WCHA)
Date: Jan. 27, 2007
Location: St. Cloud, Minn.
Arena: Nat'l Hockey Center
Attendance: 354 Start time: 2:07 pm
End time: 4:16 pm Total time: 2:09

Goals by Period table with columns: Goals by Period, 1, 2, 3, OT, Total. Rows for Bemidji State and St. Cloud State.

1st period - 1, BSU - Lisa Kissick/2 (Mandy Bambrough/4) 17:01. Penalties - Kelly Hart, BSU (Body Checking) 07:43; Hailey Clarkson, SCSU (Tripping) 09:47; Mandy Bambrough, BSU (Tripping) 09:47; Amy Currier, SCSU (Hooking) 13:32; Brita Schroeder, SCSU (Cross-Checking) 14:48; Nikkie Ekebrecht, BSU (Hooking) 18:17.

2nd period - 2, BSU - Helena Tageson/9 (Kelly Hart/12) 19:54. Penalties - Helena Tageson, BSU (Tripping) 02:58; Mandy Bambrough, BSU (Tripping) 06:54; Ashley Leopold, BSU (Body Checking) 10:04; Kelly Meierhofer, SCSU (Obstruction-Holding) 13:24; Holly Roberts, SCSU (Tripping); Helena Tageson, BSU (High Sticking) 13:45; Jenn Sadler, BSU (Roughing) 20:00; Tara Hiscock, BSU (Roughing) 20:00; Meaghan Pezon, SCSU (Roughing) 20:00; Laura Fast, SCSU (Roughing) 20:00.

3rd period - 1, SCSU - Laura Fast/8 (Megan McCarthy/10; Brita Schroeder/7) 05:17; 2, SCSU - Meaghan Pezon/9 (Laura Fast/9, Megan McCarthy/11) 08:12 PPG. Penalties - Ashley Leopold, BSU (Tripping) 06:36; Nikkie Ekebrecht, BSU (Cross-Checking) 08:55; Nikkie Ekebrecht, BSU (Hooking) 11:36.

Overtime period - No Scoring. Penalties - Jenn Sadler, BSU (Body Checking) 03:36.

Shots on goal: BSU 8-9-5-1--23; SCSU 12-15-13-7--47.
Power plays: BSU 0-3; SCSU 1-9.
Penalties: BSU 13 (26 min.); SCSU 7 (14 min.)

Goalies: BSU, Emily Brookshaw 9-14-4 (65:00 minutes, 47 shots, 45 saves); SCSU, Lauri St. Jacques 5-5-1 (64:47 minutes, 23 shots, 21 saves).

Three stars: 1. Laura Fast 2. Emily Brookshaw 3. Meaghan Pezon.



2006-07 SCSU Women's Hockey Game Summaries

GAME 29

St. Cloud State (9-13-7, 5-13-5 WCHA) at #8 Minnesota (18-8-1, 15-7-1 WCHA)
Date: Feb. 2, 2007
Location: Minneapolis, Minn.
Arena: Ridder Arena
Attendance: 1232 Start time: 7:07 pm
End time: 9:10 pm Total time: 2:03

Goals by Period	1	2	3	Total
St. Cloud State	0	0	0	0
Minnesota	2	1	1	4

1st period - 1, UM - Bobbi Ross/13 (Gigi Marvin/16, Melanie Gagnon/19) 11:11 PPG; 2, UM - Jenelle Philipczyk/6 (Michelle Maunu/2). Penalties - Brita Schroeder, SCSU (Tripping) 04:50; Laura Fast, SCSU (Holding) 10:05; Gigi Marvin, UM (High Sticking) 15:27.

2nd period - 3, UM - Erica McKenzie/9 (Gigi Marvin/17, Brittany Francis/14) 07:03 PPG. Penalties - Danielle Hirsch, SCSU (Interference) 05:05; Brita Schroeder, SCSU (Interference) 06:18; Andrea Nichols, UM (Interference) 07:18; Gigi Marvin, UM (Hooking) 10:57; Holly Roberts, SCSU (Cross-Checking) 11:16.

3rd period - 4, UM - Anya Miller/4 (Jenelle Philipczyk/13) 08:52. Penalties - Holly Roberts, SCSU (Interference) 00:15; Jenelle Philipczyk, UM (Interference) 05:59; Anya Miller, UM (Interference) 09:25; Bobbi Ross, UM (Roughing) 11:17; Brita Schroeder, SCSU (Interference) 12:35; Andrea Nichols, UM (Tripping) 15:48; Kelly Meierhofer, SCSU (Checking) 19:22.

Shots on goal: SCSU 10-4-5--19; UM 12-11-8-31.

Power plays: SCSU 0-7; UM 2-8.

Penalties: SCSU 8 (16 min.); UM 7 (14 min.)

Goalies: SCSU, Lauri St. Jacques 5-6-1 (48:52 minutes, 26 shots, 22 saves); SCSU, Carmen Lizée (11:08 minutes, 5 shots, 5 saves).
UM, Kim Hanlon 6-3-0 (60:00 minutes, 19 shots, 19 saves).

Three stars: 1. Jenelle Philipczyk 2. Gigi Marvin
3. Kim Hanlon

GAME 30

#8 Minnesota (19-8-1, 16-7-1 WCHA) at St. Cloud State (9-14-7, 5-14-5 WCHA)
Date: Feb. 3, 2007
Location: St. Cloud, Minn.
Arena: National Hockey Center
Attendance: 641 Start time: 7:07 pm
End time: 9:09 pm Total time: 2:03

Goals by Period	1	2	3	Total
Minnesota	0	4	2	6
St. Cloud State	2	2	0	4

1st period - 1, SCSU - Megan McCarthy/3 (Laura Fast/10, Meaghan Pezon/9) 00:43; 2, SCSU - Sammy Nixon/4 (Denelle Maguet/12, Amy Currier/1) 05:56. Penalties - Stacy Dey, SCSU (Interference) 11:43; Andrea Nichols, UM (Unsportsmanlike Conduct) 11:43; Brittany Francis, UM (Interference) 15:48.

2nd period - 1, UM - Bobbi Ross/15 (Brittany Francis/15) 01:09; 3, SCSU - Laura Fast/9 (Megan McCarthy/12, Meaghan Pezon/10) 07:15; 2, UM - Gigi Marvin/16 (Erica McKenzie/11, Brittany Francis/16) 08:32 PPG; 3, UM - Andrea Nichols/12 (Anya Miller/15, Whitney Graft/16) 08:53; 4, SCSU - Laura Fast/10 (Jacqueline Jensen/2, Sammy Nixon/6) 13:26; 4, UM - Anya Miller/5 (Whitney Graft/17, Dagny Willey/8) 14:33 PPG. Penalties - Michelle Moen, SCSU (Tripping) 02:49; Marie-Michel Lemieux, SCSU (Roughing) 08:18; Laura Fast, SCSU (Hooking) 11:09; Denelle Maguet, SCSU (Interference) 14:02; Tiffany Johnson, UM (Tripping); Megan McCarthy, SCSU (Roughing) 18:48; Melanie Gagnon, UM (High Sticking) 18:48.

3rd period - 5, UM - Maggie Souba (Anya Miller, Gigi Marvin) 00:27; 6, UM - Brittany Francis (Bobbi Ross) 00:56. Penalties - Laura Fast, SCSU (Roughing) 03:24; Maggie Souba, UM (Roughing) 03:24; Anya Miller, UM (Interference) 13:16; Amy Currier, SCSU (Contact to the Head) 16:14; Megan McCarthy, SCSU (Body Checking) 18:33.

Shots on goal: UM 8-13-7--28; SCSU 13-10-9-32.

Power plays: UM 2-6; SCSU 0-3.

Penalties: UM 6 (12 min.); SCSU 9 (18 min.)

Goalies: UM, Kim Hanlon 7-3-0 (60:00 minutes, 32 shots, 28 saves).
SCSU, Lauri St. Jacques 5-7-1 (59:00 minutes, 28 shots, 22 saves)

Three stars: 1. Laura Fast 2. Anya Miller
3. Brittany Francis

GAME 31

St. Cloud State (9-15-7, 5-15-5 WCHA) at Minnesota State (15-13-2, 11-12-2 WCHA)
Date: Feb. 9, 2007
Location: Mankato, Minn.
Arena: All Seasons Arena
Attendance: 266 Start time: 7:07 pm
End time: 9:25 pm Total time: 2:18

Goals by Period	1	2	3	OT - Total
St. Cloud State	0	1	2	0 - 3
Minnesota State	2	1	0	1 - 4

1st period - 1, MSU - Lindsay Macy/14 (Kala Buganski/8, Kathleen Rosso/3) 01:18; 2, MSU - Jodi Helminen/5 (Amanda Stohr/8) 05:39. Penalties - Caitlin Hogan, SCSU (Hooking) 08:40; Lindsay Macy, MSU (Slashing) 16:52.

2nd period - 3, MSU - Shera Vis/11 (Jodi Helminen/11, Kala Buganski/9) 06:06 PPG; 1, SCSU - Meaghan Pezon/10 (Brittany Kuyper/9, Danielle Hirsch/3) 14:02 PPG. Penalties - Kathleen Ross, MSU (High Sticking) 01:27; Megan McCarthy, SCSU (Tipping) 04:33; Lindsay Macy, MSU (Unsportsmanlike Conduct) 08:36; Megan Jedinak, MSU (Interference) 13:30; Meaghan Pezon, SCSU (Tripping) 16:07.

3rd period - 2, SCSU - Megan McCarthy/4 (Caitlin Hogan/13, Meaghan Pezon/11) 01:04; 3, SCSU - Laura Fast/11 (Caitlin Hogan/14, Holly Roberts/13) 04:18 PPG. Penalties - Holly Snyder, MSU (Checking) 02:38; Amanda Stohr, MSU (Unsportsmanlike Conduct) 04:25; Amy Currier, SCSU (Cross-Checking) 04:25; Amanda Stohr, MSU (Checking) 04:25; Amy Currier, SCSU (Unsportsmanlike Conduct) 04:25; Caitlin Hogan, SCSU (High Sticking) 09:01; Meaghan Pezon, SCSU (Slashing) 19:07.

Overtime period: 4, MSU - Christina Lee/15 (Kristina Bunker/16) 04:40. Penalties -Danielle Hirsch, SCSU (Unsportsmanlike Conduct) 03:54; Amanda Stohr, MSU (Holding) 03:54.

Shots on goal: SCSU 7-6-12-1--26; MSU 16-8-8-2--34.

Power plays: SCSU 2-5; MSU 1-5.

Penalties: SCSU 8 (16 min.); MSU 8 (16 min.)

Goalies: SCSU, Lauri St. Jacques 5-8-1 (64:40 minutes, 34 shots, 30 saves).
MSU, Britni Kehler 15-12-2 (64:40 minutes, 26 shots, 23 saves).

Three stars: 1. Christina Lee 2. Jodi Helminen
3. Britni Kehler



2006-07 SCSU Women's Hockey Game Summaries

GAME 32

St. Cloud State (9-16-7, 5-16-5 WCHA) at Minnesota State (16-13-2, 12-12-2 WCHA) Date: Feb. 10, 2007 Location: Mankato, Minn. Arena: All Seasons Arena Attendance: 289 Start time: 3:07 pm End time: 5:12 pm Total time: 2:05

Goals by Period table with columns 1, 2, 3, Total and rows for St. Cloud State and Minnesota State.

1st period - 1, MSU - Maggie Fisher/17 (unassisted) 13:25 SHG. Penalties - Hailey Clarkson, SCSU (Cross-checking) 00:08; Andreeanne Thibault, MSU (Interference) 12:18; Hailey Clarkson, SCSU (High Sticking) 14:41.

2nd period - No Scoring. Penalties - Maggie Fisher, MSU (Interference) 12:37; Kelly Meierhofer, SCSU (Holding) 16:42.

3rd period - 2, MSU - Jodi Helminen/6 (Holly Snyder/4, Shera Vis/9) 15:55 PPG. Penalties - Lindsay Macy, MSU (Unsportsmanlike conduct) 11:30; Danielle Hirsch, SCSU (Hooking) 15:19; Brittany Mackley, MSU (Hooking) 17:24; Kelly Meierhofer, SCSU (TM Too many on ice) 17:24; Hailey Clarkson, SCSU (Roughing) 18:49; Maggie Fisher, MSU (Roughing) 18:49; Holly Roberts, SCSU (Cross-checking) 19:41.

Shots on goal: SCSU 5-14-11-30; MSU 7-8-4-19. Power plays: SCSU 0-3; MSU 1-5. Penalties: SCSU 7 (14 min.); MSU 5 (10 min.)

Goalies: SCSU, Carmen Lizee 3-5-2 (57:36 minutes, 19 shots, 17 saves). MSU, Britni Kehler 16-12-2 (60:00 minutes, 30 shots, 30 saves).

Three stars: 1. Britni Kehler 2. Maggie Fisher 3. Shera Vis.

GAME 33

North Dakota (3-28-2, 0-26-1 WCHA) at St. Cloud State (10-16-7, 6-16-5 WCHA) Date: Feb. 16, 2007 Location: St. Cloud, Minn. Arena: National Hockey Center Attendance: 221 Start time: 7:07 pm End time: 9:07 pm Total time: 2:00

Goals by Period table with columns 1, 2, 3, Total and rows for North Dakota and St. Cloud State.

1st period - 1, SCSU - Hailey Clarkson/9 (Holly Roberts/14, Laura Fast/11); 2, SCSU - Laura Fast/12 (Denelle Maguet/13, Hailey Clarkson/12) 09:42 PP. Penalties - Hailey Clarkson, SCSU (High Sticking) 0:38; Brittni Kuyper, SCSU (Roughing) 04:51; Samantha Bowers, UND (Tripping) 04:51; Samantha Bowers, UND (Slashing) 08:59; Melissa Jaques, UND (Body Checking) 11:07.

2nd period - 3, SCSU - Laura Fast/13 (unassisted) 04:02; 4, SCSU - Sammy Nixon/5 (unassisted) 05:38; 1, UND - Samantha Turner/2 (Jenny Porter/2, Melissa Jaques/3) 17:42 PP. Penalties - Marie-Michel Lemieux, SCSU (Body Checking) 06:12; Laura Fast, SCSU (Cross-checking) 14:21; Holly Roberts, SCSU (Slashing) 16:26.

3rd period - 5, SCSU - Meaghan Pezon/11 (Megan McCarthy/13) 01:06; 6, SCSU - Hailey Clarkson/10 (Laura Fast/12, Holly Roberts/15) 17:14. Penalties - Samantha Bowers, UND (Roughing) 04:39; Brittni Kuyper, UND (Roughing) 04:39; Tricia Fast, SCSU (Interference) 08:46.

Shots on goal: UND 5-15-8--28; SCSU 14-9-10--33. Power plays: UND 1-5; SCSU 1-2 Penalties: UND 4 (8 min.); SCSU 7 (14 min.) Goalies: UND, Brittany Kirkham 3-27-2 (60:00 minutes, 33 shots, 27 saves). SCSU, Carmen Lizee 4-5-2 (60:00 minutes, 28 shots, 27 saves).

Three stars: 1. Laura Fast 2. Hailey Clarkson 3. Carmen Lizee

GAME 34

North Dakota (3-29-2, 0-27-1 WCHA) at St. Cloud State (11-16-7, 7-16-5 WCHA) Date: Feb. 17, 2007 Location: St. Cloud, Minn. Arena: National Hockey Center Attendance: 351 Start time: 2:07 pm End time: 4:01 pm Total time: 1:54

Goals by Period table with columns 1, 2, 3, Total and rows for North Dakota and St. Cloud State.

1st period - 1, SCSU - Hailey Clarkson/11 (Caitlin Hogan/15, Laura Fast/13) 08:20 PP. Penalties - Samantha Bowers, UND (Interference) 07:53.

2nd period - 1, UND - Jodi Holland/1 (Casi Hanson/3, A. Gagnon-Laplan/3) 18:02; 2, SCSU - Brittni Kuyper/5 (Amy Currier/2) 18:27. Penalties - Jade Schirado, UND (Delay of Game) 02:51; Meaghan Pezon, SCSU (Roughing) 11:52; Alex Williams, UND (Cross-checking);

Caitlin Hogan, SCSU (Holding) 15:48; Cassandra Flanagan, UND (Hooking) 19:54.

3rd period - 3, SCSU - Laura Fast/14 (Hailey Clarkson/13) ENG 19:00. Penalties - Marie-Michel Lemieux, SCSU (Cross-checking) 11:35; Megan McCarthy, SCSU (Body checking) 14:17.

Shots on goal: UND 12-9-12--33; SCSU 14-6-10--30. Power plays: UND 0-4; SCSU 1-4 Penalties: UND 4 (8 min.); SCSU 4 (8 min.) Goalies: UND, Brittany Kirkham 3-28-2 (58:38 minutes, 29 shots, 27 saves). SCSU, Lauri St. Jacques 6-8-1 (60:00 minutes, 33 shots, 32 saves).

Three stars: 1. Brittni Kuyper 2. Hailey Clarkson 3. Lauri St. Jacques

GAME 35 - WCHA 1st Rd Playoffs

#7 St. Cloud State (11-17-7) at #2 Minnesota Duluth (21-8-4) Date: Feb. 23, 2007 Location: Duluth, Minn. Arena: Mars Lakeview Arena Attendance: 520 Start time: 7:07 pm End time: 9:25 pm Total time: 2:18

Goals by Period table with columns 1, 2, 3, Total and rows for St. Cloud State and Minnesota Duluth.

1st period - 1, UMD - Emmanuelle Blais/12 (Jill Sales/9) 04:36 PPG; 1, SCSU - Holly Roberts/16 (Laura Fast/14; Hailey Clarkson/14) 10:42 PPG. Penalties - Brittni Kuyper, SCSU (Checking) 03:11; Tawni Mattila, UMD (Tripping) 10:21; Sara Murray, UMD (Too Many on Ice) 16:45.

2nd period - 2, UMD - Karine Demeule/13 (Saara Tuominen/24) 05:04 SHG; 3, UMD - Saara Tuominen/10 (Emmanuelle Blais/17; Noemie Marin/22) 08:41 PPG. Penalties - Jill Sales, UMD (Holding) 03:04; Tricia Fast, SCSU (Tripping) 06:53; Myriam Trepanier, UMD (Holding) 12:41; Michaela Lanzl, UMD (Holding) 15:21; Kelly Meierhofer, SCSU (Tripping) 18:32; Emmanuelle Blais, UMD (Roughing) 19:34; Tricia Fast, SCSU (Roughing) 19:34.

3rd period - 4, UMD - Jessica Koizumi (Michaela Lanzl) EX 08:25; 2, SCSU - Laura Fast (Denelle Maguet; Caitlin Hogan) EX 15:10; 3, SCSU - Caitlin Hogan (Holly Roberts; Denelle Maguet) EX 19:36. Penalties - Denelle Maguet, SCSU (Tripping) 00:15; Elin Holmlov, UMD (Roughing) 00:17; Brittni Kuyper, SCSU (Hooking) 03:00; Denelle Maguet, SCSU (Hooking) 05:49; Karine Demeule, UMD (Interference) 06:35; Holly Roberts, SCSU (Checking) 06:54;



2006-07 SCSU Women's Hockey Game Summaries

GAME 35 Continued...

Denelle Maguet, SCSU (Checking) 08:04; Amy Currier, SCSU (Holding the Stick) 10:11; Karine Demeule, UMD (Interference) 10:11; Laura Fast, SCSU (Slashing) 11:02; Caitlin Hogan, SCSU (Checking) 12:16; Karine Demeule, UMD (Checking) 12:16; Michaela Lanzl, UMD (Checking) 13:42; Emmanuelle Blais, UMD (Slashing) 14:25.

Shots on goal: SCSU 8-8-13--29; UMD 13-11-13--37.

Power plays: SCSU 2-8; UMD 2-8
Penalties: SCSU 12 (24 min.); UMD 12 (24 min)
Goalies: SCSU, Lauri St. Jacques 6-9-1 (56:37 minutes, 37 shots, 33 saves). UMD, Riitta Schaublin 11-4-2 (59:47 minutes, 29 shots, 26 saves).

Three stars: None.

GAME 36 - WCHA 1st Rd Playoffs

#7 St. Cloud State (12-17-7) at #2 Minnesota Duluth (21-9-4)

Date: Feb. 24, 2007

Location: Duluth, Minn.

Arena: Mars Lakeview Arena

Attendance: 321 Start time: 7:07 pm

End time: 9:17 pm Total time: 2:10

Goals by Period	1	2	3 - Total
St. Cloud State	2	0	1 - 3
Minnesota Duluth	0	1	0 - 1

1st period - 1, SCSU - Laura Fast/16 (Holly Roberts/17) 05:38 PPG; 2, SCSU - Holly Roberts/17 (Caitlin Hogan/17) 18:40 PPG. Penalties - Heidi Pelttari, UMD (Interference) 05:25; Bobbie Anderson, SCSU (Interference) 10:23; Emmanuelle Blais, UMD (Tripping) 10:44; Elin Holmlov, UMD (Checking) 10:51; Brittni Kuyper, SCSU (Interference) 11:07; Danielle Hirsch, SCSU (Checking) 13:38; Elin Holmlov, UMD (Tripping) 18:07.

2nd period - 1, UMD - Michaela Lanzl/11 (Noemie Marin/23; Myriam Trepanier/11) 11:51. Penalties - Jaime Rasmussen, UMD (Holding) 01:08; Danielle Hirsch, SCSU (Holding) 04:03; Holly Roberts, SCSU (Hooking) 08:36; Holly Roberts, SCSU (Interference) 12:07; Jill Sales, UMD (Checking) 12:20.

3rd period - 3, SCSU - Holly Roberts/18 (Unassisted) ENG 18:35. Penalties - Danielle Hirsch, SCSU (Checking) 04:07; Elin Holmlov, UMD (Holding) 06:54; Jaime Rasmussen, UMD (Checking) 16:27; Caitlin Hogan, SCSU (High Sticking) 19:59.

Shots on goal: SCSU 10-5-7--22; UMD 11-12-13--36.

Power plays: SCSU 2-7; UMD 0-8
Penalties: SCSU 8 (16 min.); UMD 8 (16 min)
Goalies: SCSU, Kendall Newell 2-3-4 (60:00 minutes, 36 shots, 35 saves). UMD, Kim Martin 10-5-2 (59:03 minutes, 22 shots, 19 saves).

Three stars: None.

GAME 37 - WCHA 1st Rd Playoffs

#7 St. Cloud State (12-18-7) at

#2 Minnesota Duluth (22-9-4)

Date: Feb. 25, 2007

Location: Duluth, Minn.

Arena: Mars Lakeview Arena

Attendance: 319 Start time: 5:37 pm

End time: 7:37 pm Total time: 2:00

Goals by Period	1	2	3 - Total
St. Cloud State	0	0	1 - 1
Minnesota Duluth	2	1	2 - 5

1st period - 1, UMD - Noemie Marin/22 (Heidi Pelttari/2) 01:13; 2, UMD - Emmanuelle Blais/12 (Noemie Marin/24) PPG 10:25. Penalties - Brita Schroeder, SCSU (High Sticking) 03:17; Laura Fast, SCSU (Checking) 04:44; Holly Roberts, SCSU (Holding) 08:56; Danielle Hirsch, SCSU (Checking from Behind - 5 min.) 09:26; Danielle Hirsch, SCSU (Game Misconduct - 10 min.) 09:26; Kelly Meierhofer, SCSU (Tripping) 14:52; Jill Sales, UMD (Tripping) 15:30; Suvi Vacker, UMD (Interference) 16:25.

2nd period - 3, UMD - Saara Tuominen (Emmanuelle Blais; Noemie Marin) 19:24. Penalties - Suvi Vacker, UMD (Holding) 03:15; Suvi Vacker, UMD (Obstruction Interference) 11:06; Brittni Kuyper, SCSU (Interference) 12:07; Brita Schroeder, SCSU (Tripping) 13:22; Erin Olson, UMD (High Sticking) 16:20; Meaghan Pezon, SCSU (High Sticking) 18:46.

3rd period - 1, SCSU - Meaghan Pezon (Megan McCarthy; Brittni Kuyper) 12:21; 4, UMD - Tawni Mattila (Sara O'Toole; Suvi Vacker) 13:58; 5, UMD - Noemie Marin (Jill Sales) 16:53. Penalties - UMD Team (Too Many on Ice) 07:25.

Shots on goal: SCSU 8-5-9--22; UMD 11-8-7--26.

Power plays: SCSU 0-6; UMD 2-9
Penalties: SCSU 9 (29 min.); UMD 6 (12 min)
Goalies: SCSU, Kendall Newell 2-4-4 (59:56 minutes, 26 shots, 21 saves). UMD, Kim Martin 11-5-2 (59:44 minutes, 22 shots, 21 saves).

Three stars: None.