

WCHA ADMINISTRATIVE OFFICE

Bruce M. McLeod

Commissioner

Carol LaBelle-Ehrhardt

Assistant Commissioner of Operations

Greg Shepherd

Supervisor of Officials

Administrative Office

Western Collegiate Hockey Association

MSC 8302, University of Denver

2211 S. Josephine Street

Denver, CO 80208-8302

p: 303 871-4223. f: 303 871-4770

e: clabelle@wcha.com

WCHA WOMEN'S ADMINISTRATIVE AND WCHA PUBLIC RELATIONS OFFICE

Sara R. Martin

Associate Commissioner

p: 608 829-0104. f: 608 829-0105

smartin@wcha.com

Doug Spencer

Associate Commissioner

for Public Relations

p: 608 829-0100. f: 608 829-0200.

dspencer@mailbag.com

Bill Brophy

Women's Public Relations

p: 608 277-0282

bbrophy@wcha.com

Mailing Address

Western Collegiate Hockey Association

559 D'Onofrio Drive, Ste. 103

Madison, WI 53719-2096

MEN'S CONFERENCE MEMBERS

University of Alaska Anchorage

Colorado College

University of Denver

Michigan Tech University

University of Minnesota

University of Minnesota Duluth

Minnesota State University

University of North Dakota

St. Cloud State University

University of Wisconsin

WOMEN'S CONFERENCE MEMBERS

Bemidji State University

University of Minnesota

University of Minnesota Duluth

Minnesota State University

University of North Dakota

Ohio State University

St. Cloud State University

University of Wisconsin

HOME OF 36 MEN'S NATIONAL CHAMPIONSHIP TEAMS SINCE 1951

1952, 1953, 1955, 1956, 1957, 1958,
1959, 1960, 1961, 1962, 1963, 1964,
1965, 1966, 1968, 1969, 1973, 1974,
1975, 1976, 1977, 1979, 1980, 1981,
1982, 1983, 1987, 1990, 1991, 1997,
2000, 2002, 2003, 2004, 2005, 2006

HOME OF 10 WOMEN'S NATIONAL CHAMPIONSHIP TEAMS

2000, 2001, 2002, 2003, 2004, 2005,
2006, 2007, 2008

visit us on the web at:

WCHA.COM



February 11, 2010/For Immediate Release

WCHA ANNOUNCES 77 SCHOLAR-ATHLETES FOR 2009-10 FIFTH ANNUAL GROUP INCLUDES 40 REPEAT HONOREES

MADISON, Wis. – The Western Collegiate Hockey Association, through Commissioner Bruce M. McLeod, Associate Commissioner Sara R. Martin, University of Denver Faculty Representative Nancy Sampson (Chair, men's league) and Bemidji State University Faculty Representative Doug Leif (Chair, women's league) today (Feb. 11, 2010) announced that a total of 77 men's and women's student-athletes make up the fifth annual group of WCHA Scholar-Athlete Award recipients. Over the first five years of the award, there have now been 321 honorees representing all 10 men's and all eight women's institutions.

The prestigious WCHA Scholar-Athlete Award was developed through Association member team Faculty Representatives and approved by the conference membership beginning with the 2005-06 season. To earn recognition as a WCHA Scholar-Athlete, conference-member student-athletes must have completed at least one year of residency at their present institution prior to the current academic year and must also have a grade-point average of at least 3.50 on a 4.0 scale for the previous two semesters or three quarters, or may qualify if his or her overall GPA is at least 3.50 for all terms at his or her present institution.

Forty (40) of this season's 77 men's and women's WCHA Scholar-Athletes are repeat honorees from 2008-09. By conference member institution, repeat honorees are: **University of Alaska Anchorage** – Nils Backstrom, Jon Olthuis; **Bemidji State University** – Annie Bauerfeld, Erin Cody; **Colorado College** – Brian McMillin, Bill Sweatt, Mike Testwuide; **University of Denver** – Brian Gifford, Matt Glasser, Chris Nutini, Kyle Ostrow, Tyler Ruegsegger; **Michigan Technological University** – Mike VanWagner, Eli Vlaisavljevich; **University of Minnesota** – Michelle Maunu;

con't



KYLE OSTROW • UNIVERSITY OF DENVER



CAITLIN HOGAN • ST. CLOUD STATE UNIVERSITY

2009-10 WCHA SCHOLAR-ATHLETES CON'T



NILS BACKSTROM - UAA



ERIN CODY - BSU



MIKE TESTWUIDE - CC



TYLER RUEGSEGGER - DU



ELI VLAISAVLJEVICH - MTU



MICHELLE MAUNU - UM



KYLE SCHMIDT - UMD



SARAH MURRAY - UMD



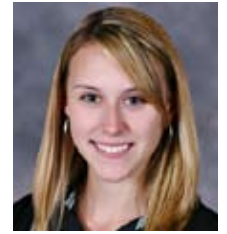
RYLAN GALIARDI - MSU



KATHLEEN ROSSO - MSU



CHRIS VANDEVELDE - UND



BRITTANY KIRKHAM - UND



RACHEL DAVIS - OSU



GARRETT RABOIN - SCSU



KELLY MEIERHOFER - SCSU



RYAN LITTLE - UW



MARIA EVANS - UW

University of Minnesota Duluth – Rob Bordson, Sarah Murray, Kenny Reiter, Kyle Schmidt; **Minnesota State University, Mankato** – Kala Buganski, Nick Canzanello, Ida Clark, Rylan Galiardi, Jenna Hewitt, Austin Lee, Kathleen Rosso, Holly Snyder, Nina Tikkinen, Amy Udvig, Ashley Young; **University of North Dakota** – Brittany Kirkham; **Ohio State University** – Rachel Davis, Raelyn LaRocque; **St. Cloud State University** – Jon Ammerman, Jenaca Fredheim, Caitlin Hogan, Courtney Josefson, Kelly Meierhofer, Garrett Raboin; and **University of Wisconsin** – Maria Evans.

"On behalf of the entire Western Collegiate Hockey Association family of student-athletes, coaches and administrators, we wish to send heartfelt congratulations to each of our men's and women's WCHA Scholar-Athlete recipients for 2009-10," said McLeod, Martin, Sampson and Leif in a joint statement.

"As we head into the stretch run of our regular seasons and prepare for our post-season championships, it is fitting that we pause here to recognize and honor the tremendous accomplishments of our student-athletes off the ice. They truly represent the very best in collegiate athletics – combining great athletic skill with an unwavering determination and drive to achieve the epitome of success in the classroom as well. Those are truly noble aspirations that will serve them well throughout their lives."

In the inaugural season of the WCHA Scholar-Athlete award, 2005-06, there were 47 men's and women's honorees. In 2006-07, there were 49 honorees, in 2007-08 there were 79 men's and women's honorees, and in 2008-09 there were 71 men's and women's honorees.

This season's group of WCHA Scholar-Athletes are being recognized and publicly honored on-ice with a commemorative plaque at respective member-team home games during the remainder of the season.

2009-10 WCHA SCHOLAR-ATHLETES

*indicates repeat honoree

University of Alaska Anchorage: *Nils Backstrom (Sr., D, Stocksund, Sweden); Josh Lunden (Sr., F, Coquitlam, BC); *Jon Olthuis (Sr., G, Neerlandia, AB); Dusan Sidor (So., G, Poprad, Slovakia); Jared Tuton (Sr., D, Whitehorse, YT).

Bemidji State University: Erin Babineau (So., F, St. Paul, MN); *Annie Bauerfeld (Jr., F, Woodbury, MN); *Erin Cody (Jr., F, Roseville, MN); Emily Erickson (So./Fr., F, Coleriane, MN); Alana McElhinney (So., G, Calgary, AB); Montana Vichorek (So., D, Moose Lake, MN); Marlee Wheelhouse (So., D, Crookston, MN); Jackie Robertson (Sr., D, Inver Grove Heights, MN).

2009-10 WCHA SCHOLAR-ATHLETES CON'T

Colorado College: David Civitarese (So., F, Calgary, AB); *Brian McMillin (Sr., F, Roseau, MN); *Bill Sweatt (Sr., F, Elburn, IL); *Mike Testwuide (Sr., F, Vail, CO).

University of Denver: Joe Colborne (So., F, Calgary, AB); *Brian Gifford (Sr., F, Moorhead, MN); *Matt Glasser (Sr., F, Calgary, AB); *Chris Nutini (Jr., D, Centennial, CO); *Kyle Ostrow (Jr., F, Calgary, AB); Rhett Rakhshani (Sr., F, Huntington Beach, CA); *Tyler Ruegsegger (Sr., F, Lakewood, CO); Patrick Wiercioch (So., D, Maple Grove, BC).

Michigan Technological University: *Mike VanWagner (Sr., D, Traverse City, MI); *Eli Vlaisavljevich (Sr., D, Shoreview, MN).

University of Minnesota: Nicole Ludwigson (So., F, Bloomington, MN); *Michelle Maunu (Sr., D, Esko, MN).

University of Minnesota Duluth: *Rob Bordson (Jr., F, Duluth, MN); Brady Hjelle (So., G, International Falls, MN); *Sarah Murray (Sr., D, Fairbault, MN); *Kenny Reiter (Jr., G, Pittsburgh, PA); *Kyle Schmidt (Jr., F, Hermantown, MN).

Minnesota State University, Mankato: Alli Altmann (So., G, Eagan, MN); *Kala Buganski (Sr., F, Anoka, MN); *Nick Canzanello (Sr., D, Rochester, MN); *Ida Clark (Sr., F, Vallentuna, Sweden); *Rylan Galiardi (Jr., F, Calgary, AB); *Jenna Hewitt (Sr., F, Anoka, MN); *Austin Lee (So., G, Bloomington, MN); Jackie Otto (So., D, Lake Zurich, IL); *Kathleen Rosso (Sr., D, Rogers, MN); Joe Schiller (So., F, Detroit Lakes, MN); *Holly Snyder (Sr., D, Kenosha, WI); *Nina Tikkinen (Jr., F, Salo, Finland); *Amy Udvig (Jr., D, New Brighton, MN); *Ashley Young (Sr., F, South St. Paul, MN).

University of North Dakota: Brad Eidsness (So., G, Chestermere, AB); Ashley Holmes (So., D, Miliona, MN); *Brittany Kirkham (Sr., G, Nepean, ON); Derrick LaPoint (Jr., D, Eau Claire, WI); Jake Marto (Jr., D, Grand Forks, ND); Chris VandeVelde (Sr., F, Moorhead, MN); Darcy Zajac (Sr., F, Winnipeg, MB).

Ohio State University: Barbara Bilko (So., G, Coldwater, MI); *Rachel Davis (Sr., D, Horton, MI); *Raelyn LaRocque (Sr., F, The Pas, MB).

St. Cloud State University: *Jon Ammerman (Sr., D, Moorhead, MN); Jordy Christian (So., F, Moorhead, MN); Anna Donlan (So., G, Hillsboro, WI); *Jenaca Fredheim (Sr., D, Campbell River, BC); Chris Hepp (Jr., D, Savage, MN); *Caitlin Hogan (Sr., F, Oakdale, MN); *Courtney Josefson (Jr., F, Bemidji, MN); Katie Kemmerer (Sr., F, Anchorage, AK); Ashlan Lambert (Jr., D, Eden Prairie, MN); Drew LeBlanc (So., F, Hermantown, MN); *Kelly Meierhofer (Sr., D, Sauk Rapids, MN); Travis Novak (So., F, Lethbridge, AB); *Garrett Raboin (Sr., D, Detroit Lakes, MN); Holly Roberts (Sr., F, St. Cloud, MN); Brittany Toor (So., F, Hartland, MI).

University of Wisconsin: *Maria Evans (Jr., F, Chanhassen, MN); Ryan Little (So., D, Fond du Lac, WI); Carla Pentimone (Jr./So., F, Chicago, IL); Carolyne Prévost (So., F, Sarnia, ON).