



# ST. CLOUD STATE UNIVERSITY

## Athletic Media Relations - Hockey

Home of the Huskies  
www.StCloudState.edu/athletics

Team Contact: Tom Nelson (tcnelson@stcloudstate.edu)  
Ph: (320) 308-2141 • Fax: (320) 308-2099



### THIS WEEK'S GAMES:

**Jan. 14-15**

SCSU (8-12-2, 4-10-0 WCHA)  
at  
Minnesota Duluth  
(8-10-4, 6-8-2 WCHA)



#### GAME DATA:

Time: 7:07 p.m. (CT)  
Location: Duluth, Minn.  
@ the DECC  
Radio: KNSI AM 1450/KCML 99.9 FM

### 2004-05 SCSU Schedule

| Date     | Opponent               | Time/Result    |
|----------|------------------------|----------------|
| 10/9     | vs. St. Lawrence       | T, 1-1         |
| 10/10    | vs. Ohio State         | W, 3-1         |
| 10/15-16 | <b>NORTHERN MICH.#</b> | W, 2-1/L, 4-2  |
| 10/22-23 | at Denver*             | L, 5-2/L, 6-1  |
| 10/29    | at Princeton           | W, 7-2         |
| 10/30    | at Yale                | W, 10-0        |
| 11/12-13 | <b>MICHIGAN TECH*#</b> | W, 3-1/W, 6-4  |
| 11/19-20 | at North Dakota*       | L, 4-1/L, 3-1  |
| 11/26-27 | <b>UMD*</b>            | W, 4-2/L, 3-1  |
| 12/3     | at Minnesota State*    | W, 4-2         |
| 12/4     | <b>MINNESOTA ST.*#</b> | L, 4-3         |
| D12/10   | <b>MINNESOTA*</b>      | L, 2-1 OT      |
| 12/11    | at Minnesota*          | L, 4-2         |
| 12/28    | vs. Maine✓             | T, 1-1         |
| 12/29    | vs. Boston C.✓         | L, 2-1 2OT     |
| 1/7-8    | <b>WISCONSIN*#</b>     | L, 6-0/L, 4-2  |
| 1/14-15  | at Minnesota-Duluth*   | 7:07 pm        |
| 1/21-22  | <b>DENVER*#</b>        | 7:07 pm        |
| 1/28-29  | <b>SACRED HEART</b>    | 7:07 pm        |
| 2/4-5    | at Alaska-Anchorage*   | 10:07 pm       |
| 2/11-12  | at Colorado College*   | 8:37 pm/8:07pm |
| 2/18     | <b>MINNESOTA ST.*#</b> | 7:07 pm        |
| 2/19     | at Minnesota State*    | 7:07 pm        |
| 2/25     | at Minnesota*          | 7:07 pm        |
| 2/26     | <b>MINNESOTA*</b>      | 7:07 pm        |
| 3/4-5    | <b>NORTH DAKOTA*#</b>  | 7:07 pm        |
| 3/11-13  | First Round WCHA       | TBA            |
| 3/17-19  | WCHA Final Five        | St. Paul       |
| 3/25-27  | NCAA Regionals         | TBA            |
| 4/7-9    | NCAA Final 4           | Columbus, OH   |

\* WCHA games

# games televised live on Charter Channel 65

✓ at Florida Hockey Classic in Estero, Fla.

For complete ticket information, please call  
1-877-SCSUTIX or 320-308-2137.

### 2004-05 SCSU MEN'S HOCKEY NEWS

Release Date: Jan. 10, 2005



**GOING UP NORTH FOR THE WEEKEND:** The St. Cloud State University men's hockey team (8-12-2, 4-10-0 WCHA) will travel to Duluth, Minn. for a pair of WCHA games against the University of Minnesota Duluth on Friday and Saturday, Jan. 14 & 15. The games will both start at 7:07 p.m. at the DECC (cap. 5,333/190x85). This marks the second time this season these two teams have played, with the Huskies and Bulldogs splitting a series in St. Cloud on Nov. 26-27. Fans can listen to the game live on KNSI AM 1450/KCML 99.9 FM with Don Lyons calling the play-by-play. KVSC 88.1 FM will also carry both games live from the NHC.

**2003-04 RESULTS:** The Huskies finished their season with an 18-16-4, 12-12-4 WCHA/6th place). This was the fifth consecutive season that SCSU has finished above the .500 mark.



**SCSU COACH CRAIG DAHL:** SCSU head coach Craig Dahl is in his 18th season with the Huskies, and has been the team's only head coach since SCSU moved to the DI level in 1987-88. Dahl's record at SCSU is 332-298-51, and his all-time collegiate coaching record is 408-385-53. He will begin his 24th year as a collegiate head coach in 2004-05. Dahl served for one season as an assistant coach to Herb Brooks at SCSU in 1986-87, and prior to that he had head coaching assignments at UW-River Falls and Bethel College. Dahl is a 1976 graduate of Pacific Lutheran University.

**ASSISTANT COACHING STAFF:** Coach Dahl will be assisted in 2004-05 by Brad Willner and Fred Harbinson. Willner, a 1995 graduate of Lake Superior State, will begin his fifth season with the Huskies in 2004-05. Harbinson begins his third season as a member of the SCSU coaching corps in 2004-05. Harbinson is a 1995 graduate of Wisconsin-Superior. SCSU will also enlist the support of goalie coach David Weninger and video coordinator Josh Flynn this season.

**NEW WEBSITE ADDRESS:** Please be aware that the SCSU Husky Home Page website has been moved to the following URL: [www.StCloudState.edu/athletics](http://www.StCloudState.edu/athletics) This new and improved website was installed during August 2004 and is the official website of SCSU Athletics. Complete game reports, stats and rosters can be found at this very informative stop on the web. So, set you bookmarks.

**HUSKY HOCKEY ON THE AIR:** Once again in 2004-05, KNSI AM 1450 and KCML FM 99.59 will carry SCSU hockey live over the radio (and on the web at [www.1450knsi.com](http://www.1450knsi.com)). Don Lyons will call the play-by-play with color commentary provided by SCSU All-American Dave Reichel. KNSI will also host the Craig Dahl Show live from the Blue Line Cafe in Sartell every Monday evening at 6 p.m. during the season. Lyons will host the show with help from SC Times writer Kevin Allenspach..select home and away games will also be broadcast live on KVSC 88.1. You can also pick up KVSC on the web at [www.kvsc.org](http://www.kvsc.org)

For the latest on SCSU Athletics, check out the Husky Homepage  
[www.StCloudState.edu/athletics](http://www.StCloudState.edu/athletics)



## MORE NEWS AND NOTES...

**TOUGH NIGHTS AT THE NHC:** SCSU lost a tough 6-0 decision to #6/7 Wisconsin at the NHC on Jan. 7. The Badgers scored two goals in each period to ice the shutout win over the Huskies. Wisconsin outshot the Huskies 31-30 in the contest, as SCSU goalie Tim Boron had 25 saves in the game. Bernd Bruckler gained the shutout for UW with 30 saves to his credit. On the power play, SCSU was 0-for-4 and UW was 3-of-3...a four goal performance by Ryan MacMurphy lifted #6/7 Wisconsin to a 4-2 win at SCSU on Jan. 8, at the NHC. MacMurphy netted the game's first goal at 16:00 of the first period on the power play to give UW a 1-0 lead. Dave Iannazzo snapped a six-period scoring drought for the Huskies with a short-handed goal at 16:57 of the first period, as assists were provided by defenders Matt Stephenson and Casey Borer. For Stephenson, the point was his first as a collegiate player. In the second period, MacMurphy scored at 8:28 and then posted the game-winner at 10:12. The Huskies made things interesting as Andrew Gordon scored his eighth goal of the season at 8:41 of the third period with power play assists going to Matt Hartman and Peter Szabo. In the closing minute of play, MacMurphy scored his fourth goal at 19:08 on the empty net. In the game, Wisconsin outshot the Huskies 35-18, as UW was 1-of-6 on the power play and SCSU was 1-of-4. The Huskies had six penalties for 12 minutes and UW had five penalties for 18 minutes in the game. Boron was the goalie of record for SCSU with 31 saves, while Bruckler made 16 saves for UW.



**Gordon**

**SHUTOUT FACTS:** The Huskies have been a tough team to keep off the board over the past few seasons. In fact, the last time SCSU suffered a shutout was against UW. Last year in Madison, SCSU dropped a 3-0 decision against Bernd Bruckler on Feb. 21, 2004. The six-goal deficit was also the largest loss margin by the Huskies since a 7-1 setback against Colorado College on Feb. 27, 2004. The six goals allowed were the most allowed by the Huskies at the NHC this season, and the most since that 7-1 loss to CC last year. The six goals allowed also equals the most goals allowed by the Huskies in a game this season. SCSU also had a 6-1 loss at Denver on Oct. 23.

**IANNAZZO RANKS SIXTH:** The SHG scored by Dave Iannazzo vs. UW, was his second of the 2004-05 season, and his fifth career shorthanded goal for the Huskies. Iannazzo ranks sixth in the team charts for career shorthanded goals at five. The team's all-time SHG leader is Dave Paradise with nine from 1994-97. The goal snapped a six-game scoring drought for Iannazzo.

**FIRST TIMER AT SCSU:** Matt Stephenson, a freshman defender from Midland, Ontario, scored his first point as a college player with an assist on Dave Iannazzo's shorthanded goal on Jan. 8 vs. Wisconsin.

## 2004-05 SCSU Hockey Roster

| No | Name                | Pos. | HT   | Yr  | Hometown           |
|----|---------------------|------|------|-----|--------------------|
| 1  | Tim Boron           | G    | 5-11 | So. | Winnipeg, MB       |
| 3  | T.J. McElroy        | D    | 6-1  | Jr. | Golden Valley, MN  |
| 4  | Chris Anderson      | D    | 6-3  | FY  | North Oaks, MN     |
| 5  | Josh Singer         | D/F  | 6-0  | Jr. | Lino Lakes, MN     |
| 6  | Casey Borer (CAR)   | D    | 6-2  | So. | Brooklyn Park, MN  |
| 8  | Nate Raduns         | F    | 6-3  | So  | Sauk Rapids, MN    |
| 9  | Sean Garrity        | F    | 6-2  | FY  | North St. Paul, MN |
| 10 | Matt Hartman        | F    | 6-1  | FY  | St. Cloud, MN      |
| 11 | Dave Iannazzo - C   | F    | 5-9  | Sr. | Maple Grove, MN    |
| 12 | Mike Doyle          | F    | 6-3  | Sr. | Anchorage, AK      |
| 13 | Nate Dey            | F    | 6-1  | FY  | Maplewood, MN      |
| 15 | Matt Francis        | F    | 5-10 | FY  | Surrey, BC         |
| 16 | Marty Mjelleli      | F    | 6-1  | FY  | Faribault, MN      |
| 17 | Andrew Gordon       | F    | 5-11 | FY  | Porters Lake, NS   |
| 19 | Gary Houseman       | F    | 5-10 | So. | Saskatoon, SK      |
| 20 | Billy Hengen        | F    | 5-9  | Jr. | Eden Prairie, MN   |
| 21 | Grant Clifton       | D    | 5-11 | So. | Grand Rapids, MN   |
| 22 | Peter Szabo         | F    | 5-9  | Sr. | Nitra, Slovakia    |
| 23 | Joe Jensen (PITT)   | F    | 5-11 | Jr. | Plymouth, MN       |
| 24 | Matt Gens (VAN) - C | D    | 6-0  | Sr. | Baudette, MN       |
| 25 | Matt Stephenson     | D    | 6-2  | FY  | Midland, Ont.      |
| 26 | Aaron Brocklehurst  | D    | 5-10 | FY  | Nanaimo, BC        |
| 27 | Justin Fletcher     | D    | 5-11 | So. | Maryville, IL      |
| 32 | Brock Hooton (OTT)  | F    | 6-2  | Jr. | Nanaimo, BC        |
| 33 | Konrad Reeder       | F    | 5-6  | Jr. | Vanderhoof, BC     |
| 35 | Ethan Lyerly        | G    | 6-1  | FY  | St. Cloud, MN      |
| 40 | Jason Montgomery    | G    | 6-1  | Jr. | Blaine, WA         |

Head Coach: Craig Dahl

Assistant Coaches: Fred Harbinson, Brad Willner

## 2004-05 Highlights

### Period

Most Goals: 5 (vs. Princeton, 10/29/04, 2nd period)  
 Most Goals in 1st Period: 3 (vs. Yale, 10/30/04)  
 Most Goals in 2nd Period: 5 (vs. vs. Princeton, 10/29/04)  
 Most Goals in 3rd Period: 4 (vs. Yale, 10/30/04)  
 Most Goals Allowed: 3 (4X, last vs. UMD in 3rd on 11/27/04)  
 Most Shots: 27 (vs. MTU in 2nd on 11/13/04)  
 Most Shots Allowed: 20 (2nd, vs. DU on 10/22/04)  
 Fewest Shots: 2 (2nd vs. Wisconsin, 1/8/05)  
 Fewest Shots Allowed: 3 (2nd vs. NMU 10/15/04)  
 Most PIM: 20 (3rd vs. Denver, 10/22/04)  
 Most PIM-Both Teams: 42 (3rd vs. Denver, 10/22/04)  
 Ind. Most Goals: 2 (2X, last by Dave Iannazzo, 2nd vs. MTU, 11/13/04)  
 Ind. Most Assists: 2 (by several players)  
 Ind. Most Points: 2 (by several players)

### Game

Largest Victory Margin: 10 goals (vs. Yale, 10/30/04)  
 Largest Defeat Margin: 6 goals (vs. UW, 1/7/05 -- 6-0)  
 Most Goals: 10 (vs. Yale, 10/30/04)  
 Most Goals Allowed: 6 (vs. Denver, 10/23/04, UW, 1/7/05)  
 Most PPG: 4 vs. MTU (11/13/04) and Princeton (10/29/04)  
 Most PPG Allowed: 3 vs. NMU, 10/16/04, lost 4-2, 3 vs. UM, 12/11/04, lost 4-2, vs. UW, lost 6-0 on 1/7/05  
 Most SHG: 1 (vs. Denver on 10/22/04 & UW on 1/8/05)  
 Most SHG Allowed: 2 (at Denver on 10/22/04)  
 Most Shots: 49 vs. MTU, 11/13/04  
 Most Shots Allowed: 44 vs. Boston College, 12/29/04  
 Fewest Shots: 18 vs. UW, 1/8/05  
 Fewest Shots Allowed: 19 vs. NMU, 10/15/04  
 Most Penalty Minutes: 34 (17) vs. Denver, 10/22/04  
 Most Opponent PIM: 36 (18) vs. Denver, 10/22/04  
 Most PIM (Both Teams): 70 vs. Denver, 10/22/04  
 Fewest PIM: 8 (4) vs. UND, 11/19/04, 8 (4) vs. UW, 1/7/05  
 Fewest Opponent PIM: 10 at MSU on 12/3/04, 10 vs. UW on 1/7/05  
 Fewest PIM (Both Teams): 18 vs. UW, 1/7/05  
 Ind. Most Goals: 2 (by several players)  
 Ind. Most Assists: 4 (by Billy Hengen vs. Princeton, 10/29/04)  
 Ind. Most Points: 5 (by Billy Hengen vs. Princeton, 10/29/04)



**MORE NEWS AND NOTES...**

**BORER ON TEAM USA:** Sophomore defender Casey Borer played with the 2005 U.S. National Junior Team at the International Ice Hockey Federation Junior Hockey championships in Grand Forks, N.D. and Thief River Falls, Minn. this year. Borer is the fifth Husky to be named to the National Junior Team, previous SCSU players to gain this honor include Matt Cullen, Mark Parrish and Josh DeWolf. In seven games played, Borer had 6 PIM and was 0 on the all important +/- . Team USA captured 4th place at the tournament.

**SCSU NOTES:** Rookie forward Andrew Gordon scored his eight goal of the season with a power play marker against the Badgers on Jan. 8. The goal was Gordon's fourth power play goal of the season... Gordon now ranks second on the team with eight goals this season. Iannazzo moved into the team's goal scoring lead thanks to his SHG in the game on Jan. 8. Iannazzo now has nine goals this year. Iannazzo hit a career-high with 16 goals in 2003-04... Senior forward Peter Szabo had an assist on Gordon's goal, which was Szabo's ninth of the season. He is now tied for the team's assist lead along with Billy Hengen, Justin Fletcher and Joe Jensen. Szabo has 64 assists in his sterling career in St. Cloud, which places the Nitra, Slovakia native in a tie for 14th place on the SCSU's all-time career assist leader list. He is tied with Bill Lund, who had 64 from 1992-95. Next up on the list is Jon Cullen, who had 69 assists from 1999-03. SCSU's all-time career assist leader is Jeff Saterdalen, who had 101 from 1988-92...the Huskies tied a season-low with just eight penalty minutes on Jan. 7 vs. UW. The Huskies also had just eight minutes in penalties on Nov. 19 at North Dakota. The 18 minutes of penalties combined between UW and SCSU is a new season low for a game played by the Huskies in 2004-05...the last time SCSU was shutout at home (prior to Jan. 7) was a 2-0 setback against Minnesota on Nov. 17, 2000. Adam Hauser was the winning goalie for the Huskies in that game and made 25 saves...the weekend sweep by the Badgers at the NHC, marked the first time since Feb. 5-6, 1999, that the Huskies have been swept by the Badgers at home. The shutout on Jan. 7, was the first time since a 3-0 loss to Wisconsin on Feb. 21, 2004 that the Huskies have been shutout. This was also the first time in team history at the DI level that SCSU had been shutout by the Badgers at home...the last time SCSU played at the DECC, the Huskies collected a 3-2 victory and a 5-3 win on Nov. 7-8, 2003. SCSU is now 4-2 against UMD in the two team's last six meeting ...Iannazzo, the team's scoring leader in 2003-04, leads the Huskies with 17 points (9g/8a). In his career, Iannazzo has 30 goals and 32 assists for a total of 62 points. At present, SCSU top active career point person is Szabo with 85 points (21g/64a) in 135 games played. Of note, Geno Parrish (1996-00) is the team's career leader with 156 games played, while Joe Motzko (1999-03) ranks second with 154 games played.



*Iannazzo*

**TEAM CAPTAINS:** Matt Gens and Dave Iannazzo have been selected as team co-captains for the 2004-05 season. The pair were named team captains during the week of Oct. 17-23.

**HUSKIES ON TV:** SCSU will have several of its home games this season televised live by Charter Communication Cable channel 65 in the St. Cloud area during 2004-05. Let's Play Hockey publisher Doug Johnson and Roger Buxton will provide color commentary and play-by-play for all the telecasts this season.

**UP NEXT FOR SCSU:** The Huskies will return to the National Hockey Center on Jan. 21-22, for a pair of 7:07 p.m. games against the University of Denver. Good tickets are still available for this exciting WCHA showdown. For complete ticket information, please call 1-877-SCSUTIX or 320-308-2137.

**2004-05 SCSU Situations**

|                                   |        |
|-----------------------------------|--------|
| Game one of series                | 4-4-0  |
| Game two of series                | 1-8-0  |
| SCSU on Tuesday                   | 0-0-1  |
| SCSU on Wednesday                 | 0-1-0  |
| SCSU on Friday                    | 5-4-0  |
| SCSU on Saturday                  | 2-7-1  |
| SCSU on Sunday                    | 1-0-0  |
| WCHA Playoff                      | 0-0-0  |
| NCAA Regional                     | 0-0-0  |
| Home record                       | 4-6-0  |
| Away record                       | 3-5-0  |
| Neutral record                    | 1-1-2  |
| SCSU in Minnesota                 | 5-7-0  |
| SCSU out of state                 | 3-5-2  |
| Huskies score first               | 8-5-1  |
| Opponents score first             | 0-7-1  |
| Huskies lead after 1st period     | 5-2-0  |
| Opponents lead after 1st period   | 0-4-0  |
| Tied after 1st period             | 3-6-2  |
| Huskies lead after 2nd period     | 8-2-0  |
| Opponents lead after 2nd period   | 0-6-0  |
| Tied after 2nd period             | 0-4-2  |
| Huskies outshoot opponent         | 6-2-0  |
| Opponents outshoot Huskies        | 2-10-2 |
| Shots are even                    | 0-0-0  |
| Huskies have under 20 shots       | 0-2-0  |
| Huskies have 20-29 shots          | 2-6-2  |
| Huskies have 30-39 shots          | 4-4-0  |
| Huskies have 40-49 shots          | 2-0-0  |
| Huskies have 50+ shots            | 0-0-0  |
| One goal game                     | 1-3-0  |
| Two goal game                     | 5-5-0  |
| Three goal game                   | 0-2-0  |
| Four goal game                    | 0-0-0  |
| Five goal game                    | 1-1-0  |
| Six goal game                     | 0-1-0  |
| Seven goal game                   | 0-0-0  |
| Eight goal game                   | 0-0-0  |
| Nine goal game                    | 0-0-0  |
| 10 goal game                      | 1-0-0  |
| Overtime games                    | 0-2-2  |
| Shutouts by SCSU                  | 1      |
| Huskies are Shutout               | 1      |
| Huskies in October, 2004          | 4-3-1  |
| Huskies in November, 2004         | 3-3-0  |
| Huskies in December, 2004         | 1-4-1  |
| Huskies in January, 2005          | 0-2-0  |
| Huskies in February, 2005         | 0-0-0  |
| Huskies in March, 2005            | 0-0-0  |
| SCSU scores on the PP             | 7-3-1  |
| SCSU fails to score on the PP     | 1-9-1  |
| Opponent scores on the PP         | 2-10-0 |
| Opponent fails to score on the PP | 3-5-2  |
| Following a loss                  | 3-7-1  |
| Following a win                   | 4-4-0  |
| Following a tie                   | 1-1-0  |
| Vs. Ranked Teams                  | 2-10-1 |
| WCHA Opponent                     | 4-10-0 |
| CCHA Opponent                     | 2-1-0  |
| ECAC Opponent                     | 2-0-1  |
| Vs. College Hockey America        | 0-0-0  |
| vs. Hockey East Opponent          | 0-1-1  |



### More 2004-05 SCSU Situations

#### SCSU Scored .....SCSU's Record

|                |       |
|----------------|-------|
| 0 goals .....  | 0-1-0 |
| 1 goal .....   | 0-6-2 |
| 2 goals .....  | 1-4-0 |
| 3 goals .....  | 2-1-0 |
| 4 goals .....  | 2-0-0 |
| 6 goals .....  | 1-0-0 |
| 7 goals .....  | 1-0-0 |
| 10 goals ..... | 1-0-0 |

#### Opponent scored...

|                |       |
|----------------|-------|
| 0 goals .....  | 1-0-0 |
| 1 goal.....    | 3-0-2 |
| 2 goals .....  | 3-2-0 |
| 3 goals .....  | 0-2-0 |
| 4 goals .....  | 1-5-0 |
| 5 goals .....  | 0-1-0 |
| 6+ goals ..... | 0-2-0 |

#### When a Husky Scores a Goal W-L-T

|                    |       |
|--------------------|-------|
| Konrad Reeder      | 0-0-1 |
| Dave Iannazzo      | 4-3-0 |
| Andrew Gordon      | 4-3-0 |
| Matt Gens          | 2-0-0 |
| Billy Hengen       | 3-1-0 |
| Nate Raduns        | 1-1-0 |
| Peter Szabo        | 2-1-0 |
| Justin Fletcher    | 1-3-0 |
| Grant Clifton      | 2-0-1 |
| Joe Jensen         | 3-0-0 |
| Matt Hartman       | 2-2-0 |
| Brock Hooton       | 1-1-0 |
| Nate Dey           | 2-1-0 |
| Aaron Brocklehurst | 1-1-0 |
| Mike Doyle         | 4-1-0 |
| Josh Singer        | 1-0-0 |

#### Do You Need Information About Tickets for SCSU Hockey?

Please call:  
1-877-SCSUTIX or 320-308-2137  
for complete details

**LAST TIME VS. UMD:** On Nov. 26, the Huskies gained a 4-2 win at the NHC and on Nov. 27, the Huskies dropped a 3-1 decision to UMD. In the win, Grant Clifton had two points and the game winning goal, while Peter Szabo (2a), Dave Iannazzo (2a), and Mike Doyle (1g/1a) all had multi-point games. Iannazzo completed the weekend with a goal in the Szabo and Matt Gens had assists on that play. Jason Montgomery got the call both nights in the nets, allowing just three goals and making 55 saves over the weekend.



## 2004-05 Husky Stat Corner

#### Assorted Stats at SCSU:

|                     |   |                     |
|---------------------|---|---------------------|
| <b>2-goal games</b> | # | <b>Last Time</b>    |
| Iannazzo            | 5 | vs. MTU, 11/13/04   |
| Hengen              | 3 | vs. Yale, 10/30/04  |
| Doyle               | 3 | vs. UMD, 11/8/03    |
| Jensen              | 2 | vs. MTU, 11/13/04   |
| Gordon              | 1 | vs. Prin., 10/29/04 |
| Fletcher            | 1 | at UAA, 1/17/04     |
| Hooton              | 1 | vs. UAA, 11/28/03   |

|                   |   |                  |
|-------------------|---|------------------|
| <b>Hat Tricks</b> | # | <b>Last Time</b> |
| Doyle             | 1 | at MSU, 10/26/01 |
| Jensen            | 1 | at UM, 1/3/03    |

|                       |   |                     |
|-----------------------|---|---------------------|
| <b>3-assist games</b> | # | <b>Last Time</b>    |
| Jensen                | 1 | vs. Prin., 10/29/04 |
| Iannazzo              | 1 | at MSU, 10/26/01    |
| Szabo                 | 1 | at MSU 12/22/01     |

|                       |   |                  |
|-----------------------|---|------------------|
| <b>4-assist games</b> | # | <b>Last Time</b> |
| Szabo                 | 1 | vs. UND, 11/2/01 |

|                      |   |                     |
|----------------------|---|---------------------|
| <b>3-point games</b> | # | <b>Last Time</b>    |
| Doyle                | 3 | vs. MSU, 10/25/02   |
| Jensen               | 3 | vs. Prin., 10/29/04 |
| Iannazzo             | 2 | vs. UAA, 3/1/03     |
| Szabo                | 2 | vs. MSU, 11/16/02   |
| Gens                 | 2 | vs. BSU, 12/15/01   |
| Hengen               | 1 | vs. Yale, 10/30/04  |
| Gordon               | 1 | vs. Yale, 10/30/04  |
| Hartman              | 1 | vs. Yale, 10/30/04  |

|                      |   |                   |
|----------------------|---|-------------------|
| <b>4-point games</b> | # | <b>Last Time</b>  |
| Szabo                | 1 | vs. MSU, 12/22/01 |
| Szabo                | 1 | vs. UND, 11/2/01  |
| Hengen               | 1 | vs. MSU, 1/23/04  |

|                      |   |                     |
|----------------------|---|---------------------|
| <b>5-point games</b> | # | <b>Last Time</b>    |
| Hengen               | 1 | vs. Prin., 10/29/04 |

|                    |    |                       |
|--------------------|----|-----------------------|
| <b>Career PPGs</b> | #  | <b>Last Time</b>      |
| Doyle              | 12 | vs. UMD, 11/26/04     |
| Iannazzo           | 9  | vs. UND, 11/20/04     |
| Szabo              | 8  | vs. MTU, 11/13/04     |
| Jensen             | 8  | vs. UMD, 11/26/04     |
| Gens               | 6  | at Yale, 10/30/04     |
| Fletcher           | 6  | vs. MSU, 12/4/04      |
| Gordon             | 3  | vs. Yale, 10/30/04    |
| Hengen             | 3  | vs. MSU, 1/23/04      |
| Raduns             | 3  | vs. CC, 2/27/04       |
| Clifton            | 3  | vs. Maine, 12/28/04   |
| Brocklehurst       | 1  | vs. Prin., 10/29/04   |
| Hooton             | 1  | vs. Harvard, 12/28/03 |

|                   |   |                      |
|-------------------|---|----------------------|
| <b>Career GWG</b> | # | <b>Last Time</b>     |
| Doyle             | 7 | vs. MTU, 11/12/04    |
| Jensen            | 6 | vs. MSU, 1/23/04     |
| Iannazzo          | 5 | at MSU, 12/3/04      |
| Szabo             | 3 | vs. MTU, 11/13/04    |
| Clifton           | 3 | vs. UMD, 11/26/04    |
| Gens              | 2 | vs. NMU, 10/15/04    |
| Hengen            | 2 | vs. Prince., 11/1/03 |

|          |   |                       |
|----------|---|-----------------------|
| Fletcher | 1 | vs. Harvard, 12/29/03 |
| McElroy  | 1 | vs. OSU, 10/10/04     |
| Raduns   | 1 | at MTU, 2/7/04        |
| Reeder   | 1 | at UMD, 11/7/03       |
| Gordon   | 1 | at Prin., 10/29/04    |

|                   |   |                    |
|-------------------|---|--------------------|
| <b>Career SHG</b> | # | <b>Last Time</b>   |
| Iannazzo          | 5 | vs. UW, 1/8/05     |
| Szabo             | 4 | at DU, 10/22/04    |
| Doyle             | 2 | at CC, 12/5/03     |
| Jensen            | 1 | vs. DU, 12/13/03   |
| Raduns            | 1 | at Prin., 10/29/04 |

#### 2004-05 Season at a Glance:

Overall Record: 8-12-2  
Current Streak: L3  
Home Record: 4-6-0  
Current Streak: L5  
Away Record: 3-5-0  
Current Streak: L1  
Neutral Ice: 1-1-2  
Current Streak: L1  
WCHA Record: 4-10-0  
Current Streak: L5  
Last Five Games: 0-4-1  
Last 10 Games: 2-7-1

#### Scoring By Class at SCSU:

| Class    | G-A-P    | PPG | GWG |
|----------|----------|-----|-----|
| Seniors  | 19-27-46 | 8   | 4   |
| Juniors  | 14-22-36 | 3   | 1   |
| Sophs    | 9-24-33  | 5   | 2   |
| Freshmen | 16-18-34 | 5   | 1   |

#### Huskies on the TV:

| Date     | Opponent                    |
|----------|-----------------------------|
| 11/12-13 | MICH. TECH (CHARTER)        |
| 11/19-20 | at North Dakota#            |
| 11/26-27 | UMD* (CHARTER)              |
| 12/4     | MSU (CHARTER)               |
| 12/10    | MINNESOTA (FSN-NORTH)       |
| 12/11    | at Minnesota (FSN-North)    |
| 12/28    | vs. Maine (CSTV)            |
| 12/29    | at Everblades Tourn. (CSTV) |
| 1/7-8    | WISCONSIN (CHARTER)         |
| 1/21-22  | DENVER (CHARTER)            |
| 2/18     | MSU (CHARTER)               |
| 2/25     | at Minnesota (FSN-North)    |
| 2/26     | MINNESOTA (FSN-NORTH)       |
| 3/4-5    | UND (Charter)               |
| 3/17-19  | WCHA Final Five (FSN-North) |

Charter -- St. Cloud area Charter Communications Channel 65  
FSN-North: Fox Sports Net North  
CSTV -- College Sports Television (DirecTV 610)  
# UND home games can be viewed via satellite or web at www.theralph.com





OPPONENT NEWS AND NOTES...



Jan. 14-15: SCSU vs. UMD
Where: Duluth, Minn.
Time: 7:07 p.m.
Radio: KNSI AM 1450/KCML 99.9 FM



Minnesota Duluth Team Facts

Location .....Duluth, Minn.
Founded/Enrollment .....1895/9,900
Team Colors/Nickname .....Maroon and Gold/Bulldogs
Home Arena.....DECC (5,333)/190x85
National Affiliation/Conf. ....NCAA Div. I/WCHA
Athletics Director .....Bob Nielson
Head Coach .....Scott Sandelin (UND '87)
Record at UMD & Career.....78-90-20 (5 years)
SID .....Bob Nygaard (218-726-8579)
E-Mail .....bnygaard@d.umn.edu
2003-04 Record .....28-13-4/19-7-2 WCHA/2nd
2004-05 Record.....8-10-4/6-8-2 WCHA
Letterwinners Returning .....12F/6D/2G
Letterwinners Lost .....2F/2D/0G

UMD Series Info.

All-time series standing:
SCSU leads 40-31-5
All-time series (Division I):
SCSU leads 37-27-4
Series Started:
1946-47, SCSU wins 8-1
Most Recent Result:
UMD wins 3-1 at the NHC on 11/27/04
Last 5 Games SCSU is 3-2-0
Last 10 Games: SCSU is 5-5-0

SERIES NOTES

This marks the 3rd and 4th meetings between these two clubs in 2004-05. On Nov. 26-27, the Huskies defeated the Bulldogs 4-2 and lost 3-1 at the NHC...UMD finished second in the always rugged WCHA last year and advanced to the Frozen Four of the NCAA tournament in 2004-05...UMD's home arena the DECC opened in 1966...UMD's Junior Lessard won coveted Hobey Baker trophy in 2004...UMD is fresh from a 1-1 tie (Jan. 7) and a 4-2 loss (Jan. 8) at home against UAA...UMD is led by a pair of seniors this season. Evan Schwabe leads the team with 11g/16a for 27 points and Marco Peluso has 12g/10a for 22 points...in the nets, Issac Reichmuth (2.99 GAA) and Josh Johnson (2.57 GAA) have shared duties in 2004-05.

Last 15 games in Series

Table with 3 columns: Date, Site, Result. Lists 15 games from 1-11-02 to 11-27-04, including WCHA playoffs.

Dahl's Record vs. UMD: 37-27-4

Huskies vs. UMD (thru 1/10/05)

Table listing player statistics for Huskies vs. UMD, including names like Mike Doyle, Matt Gens, Nate Raduns, etc., and their goals/assists/points.

When Was the Last Time...

SCSU played in OT: Dec. 29, 2004 vs. Boston College, L 2-1
SCSU won in OT: Oct. 31, 2003 vs. Princeton, W 2-1
SCSU lost in OT: Dec. 29, 2004 vs. Boston College, L 2-1
SCSU recorded a shutout: Oct. 30, 2004, 10-0 win at Yale as Tim Boron makes 26 svs.(1st career shutout).
SCSU records shutout at NHC: March 1, 2003 vs. UAA, Jake Moreland 25 svs in a 7-0 win.
SCSU was shutout: Jan. 7, 2005 vs. Wisconsin, 6-0 loss
SCSU was shutout at the NHC: Jan. 7, 2005, 6-0 loss to Wisconsin. Bernd Bruckler makes 30 saves in the game.
SCSU scored 7 goals: Oct. 29, 2004, 7-2 win at Princeton
An SCSU opp. scores 7 goals: Mar. 13, 2004 at Minnesota, UM wins 7-3
SCSU scores 8 goals: Jan. 23, 2004 vs. MSU at the NHC, 8-5
SCSU opponent scores 8 goals: Jan. 16, 1998. UMD won 8-4 at the DECC.
SCSU scored 9 goals: Jan. 20, 1995 in a 9-2 win over North Dakota at the NHC.
An SCSU opponent scored 9 goals: Jan. 3, 1997. Denver University won 9-6 at Denver.
SCSU scores 10 goals: Oct. 30, 2004, a 10-0 win at Yale.
SCSU opponent scores 10 goals: March 2, 1991. at UND, 10-2
SCSU scores 11 goals: Dec. 15, 2001 vs. Bemidji State, 11-3
SCSU scores 12 goals: Jan. 19, 1992 vs. Western Ontario, 12-3
An SCSU forward scored 5 goals: Jan. 23, 1993. Fred Knipscheer against Michigan Tech in a 7-4 victory.
An SCSU forward scored 4 goals: Feb. 15, 2002, Mark Hartigan vs. UAA. March 7, 1997, Mark Parrish vs. Northern Michigan.
An SCSU forward scored a Hat Trick: March 7, 2003. Joe Motzko in a 5-3 loss to Minnesota at the NHC.
An SCSU defenseman scored a Hat Trick: Feb. 15, 1991. Bret Hedican scored three goals in a 7-7 tie vs. Wisconsin.
An SCSU player scored a pure Hat Trick: Feb. 15, 2002. Mark Hartigan scored four goals in second period vs. UAA at the NHC.
An SCSU player scored a Short-Handed Hat Trick: Feb.14, 1998. George Awada scored at 2:44 and 11:46 of the second and then at 1:28 of overtime in a 4-3 win over Michigan Tech at the NHC.
An opposing player scored a Hat Trick: Mar. 13, 2004, Troy Riddle in a 7-3 SCSU loss at Minnesota
An SCSU forward scored two Power Play goals: Nov. 13, 2004, Joe Jensen scores two PPGs in 6-4 win vs. MTU at the NHC.
An SCSU defenseman scored two PPGs: Jan. 17, 2004, Justin Fletcher scores two in a 6-3 loss at UAA.
An opposing player scored two PPGs: Nov. 13, 2004, MTU's Tyler Shelast scores two PPGs vs. SCSU at the NHC.
An SCSU player scored a SHG: Jan. 8, 2005, Dave Iannazzo scores a SHG at 16:57 of 1st period vs. Wisconsin at NHC.
An opposing player scored a SHG vs. SCSU: AJ Degenhardt scores SHG at 12:38 of 2nd period for UW at the NHC.
SCSU scored two SHG's: Oct. 13, 2001 at Maine. Matt Hendricks scores at 14:13 of the first and Mark Hartigan scores at 16:01 of the second.
Opponent scored two SHG's: Oct. 22, 2004, Denver's Gabe Gauthier scores two SHG at Magness Arena.
SCSU scores two SHG's on same penalty: Has not hapened in regular season. Ex.: Mike Doyle and Matt Gens each scored SHGs in 2nd period vs. St. Clair on 10/1103. SCSU won 8-2.
An SCSU player scored on a penalty shot: Dec. 11, 1992. Tony Gruba scored on Michigan Tech's Jamie Ram. Game ended in 1-1 tie.
An opposing player scored on a penalty shot: Oct. 18, 1996. UW's Darren Haley beats Tim Lideen at 14:45 of the 2nd period in a 3-2 SCSU win.
A penalty shot was attempted during an SCSU game: March 15, 1998. SCSU's Rob Klasnick attempted a penalty shot at 19:41 of the 3rd period against MTU's David Wenninger. Wenninger made the save.
An SCSU Player scored an ENG: Dec. 27, 2003. Matt Hendricks scores at 19:53 of the third in a 6-4 win over Harvard in Providence
An Opposing player scored an ENG: Dec. 11, 2004. Minnesota's Gino Guyer scores at 19:58 of third in a 4-2 loss at Mariucci.
SCSU Involved in a Shootout: Dec. 28, 2004 - SCSU wins 2-1 in shootout over Maine in first round of Florida College Hockey Classic. Game was a 1-1 tie after 1st OT.



**Three or More-Point Scoring Club (2004-05):**

Billy Hengen vs. Yale 10/30/04 (2g/1a)  
 Billy Hengen vs. Princeton, 10/29/04 (1g/4a)  
 Joe Jensen vs. Princeton 10/29/04 (3a)  
 Andrew Gordon vs. Yale, 10/30/04 (1g/2a)  
 Matt Hartman vs. Yale, 10/30/04 (1g/2a)

**Shutout Club (2004-05):**

Tim Boron vs. Yale, 10/30/04 (26 svcs)

**The SCSU Career 100-Point Club**

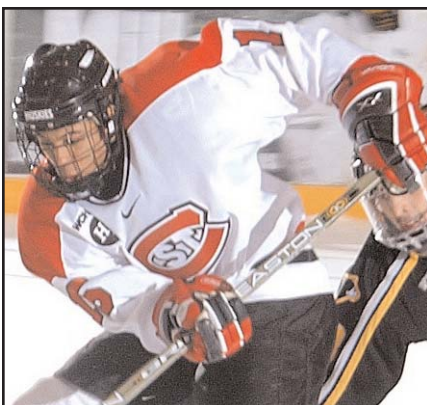
| Player              | Hometown           | G  | A   | P   | Season  |
|---------------------|--------------------|----|-----|-----|---------|
| 1 Saterdalen, Jeff  | Bloomington        | 78 | 101 | 179 | 1988-92 |
| 2 Hanus, Tim        | Excelsior          | 73 | 99  | 172 | 1988-92 |
| 3 Hartigan, Mark    | Ft. St. John, B.C. | 86 | 79  | 165 | 1999-02 |
| 4 Motzko, Joe       | Bemidji            | 52 | 90  | 142 | 1999-03 |
| 5 Malone, Ryan      | Pittsburgh, Penn.  | 56 | 84  | 140 | 1999-03 |
| 6 Amason, Tyler     | Winnipeg, MB       | 61 | 75  | 136 | 1998-01 |
| 6 DiCasimiro, Nate  | Burnsville         | 51 | 85  | 136 | 1998-02 |
| 8 Sampair, Brandon  | Mahtomedi          | 49 | 80  | 129 | 1997-01 |
| 9 Cook, Brian       | Waterloo, Iowa     | 48 | 76  | 124 | 1987-91 |
| 9 Lievers, Brett    | Wayzata            | 53 | 71  | 124 | 1990-95 |
| 11 Paradise, Dave   | Shoreview          | 66 | 56  | 122 | 1993-97 |
| 12 Scheid, Chris    | Austin             | 73 | 46  | 119 | 1987-91 |
| 13. Finnegan, Herm  | -                  | 48 | 66  | 114 | 1986-90 |
| 14 Cullen, Jon      | Alexandria         | 44 | 69  | 113 | 1999-03 |
| 14 Brodt, Vic       | North St. Paul     | 40 | 73  | 113 | 1986-90 |
| 16. Hendricks, Matt | Blaine             | 54 | 58  | 112 | 2000-04 |
| 17 Gruba, Tony      | St. Paul           | 40 | 71  | 111 | 1990-94 |
| 18 Knipscheer, Fred | Fort Wayne, Ind.   | 58 | 53  | 111 | 1990-93 |
| 19 Hultgren, Kelly  | Bloomington        | 28 | 79  | 107 | 1991-95 |
| 20 Molin, Sacha     | Stockholm, Swed.   | 47 | 55  | 102 | 1995-98 |
| - Szabo, Peter      | Nitra, Slovakia    | 21 | 64  | 85  | 2001-   |
| - Doyle, Mike       | Anchorage, AK      | 36 | 45  | 81  | 2001-   |

(please note that Finnegan and Brodt played part of their careers at the NCAA Division II level)

**THE HUSKIES'**

**WCHA/NATIONAL HONOR ROLL:**

- 11/1/04: Billy Hengen, WCHA Offensive vs. Princeton/Yale
- 11/3/04: Billy Hengen, USCHO Offensive Honorable Mention vs. Princeton/Yale
- 12/13/04: Tim Boron, WCHA Defensive vs. Minnesota
- 1/4/05: Tim Boron, USCHO Defensive Honorable Mention vs. BC/Maine
- 1/4/05: Tim Boron, WCHA Defensive vs. BC & Maine



Matt Francis in action during 2004-05.

**2004-05 WCHA Standings (1/10/05)**

|                    | Conference Only |    |          |      |        | Overall |          |      |        |  |
|--------------------|-----------------|----|----------|------|--------|---------|----------|------|--------|--|
|                    | Pts             | GP | Record   | Win% | GF-GA  | GP      | Record   | Win% | GF-GA  |  |
| 1 Wisconsin        | 24              | 16 | 12- 4- 0 | .750 | 59- 34 | 22      | 15- 6- 1 | .705 | 77- 47 |  |
| 2 Colorado College | 22              | 14 | 11- 3- 0 | .786 | 59- 37 | 22      | 18- 3- 1 | .841 | 94- 53 |  |
| 3 North Dakota     | 21              | 18 | 10- 7- 1 | .583 | 49- 43 | 24      | 14- 8- 2 | .625 | 71- 57 |  |
| 4 Denver           | 19              | 14 | 9- 4- 1  | .679 | 54- 39 | 21      | 14- 6- 1 | .690 | 85- 58 |  |
| 5 Minnesota        | 18              | 14 | 9- 5- 0  | .643 | 53- 37 | 23      | 16- 7- 0 | .696 | 84- 49 |  |
| 6 Minnesota-Duluth | 14              | 16 | 6- 8- 2  | .438 | 50- 52 | 22      | 8-10- 4  | .455 | 67- 64 |  |
| 7 Alaska Anchorage | 11              | 14 | 5- 8- 1  | .393 | 33- 51 | 18      | 7- 9- 2  | .444 | 44- 64 |  |
| Minnesota State    | 11              | 16 | 5-10- 1  | .344 | 48- 64 | 22      | 8-11- 3  | .432 | 67- 77 |  |
| 9 St. Cloud State  | 8               | 14 | 4-10- 0  | .286 | 31- 50 | 22      | 8-12- 2  | .409 | 58- 62 |  |
| 10 Michigan Tech   | 4               | 16 | 2-14- 0  | .125 | 37- 66 | 20      | 2-17- 1  | .125 | 51- 86 |  |

**WCHA Games This Week**

**Friday, January 14:**

St. Cloud State at Minnesota-Duluth WC  
 Alaska Anchorage at Wisconsin WC 7:07 pm  
 North Dakota at Colorado College WC 7:37 pm  
 \* Minnesota vs Minnesota State WC 7:37 pm  
 \* - Xcel Energy Center (St. Paul, MN)

**Saturday, January 15:**

North Dakota at Colorado College WC 7:07 pm  
 St. Cloud State at Minnesota-Duluth WC 7:07 pm  
 Alaska Anchorage at Wisconsin WC 7:07 pm  
 Minnesota at Minnesota State WC 7:07 pm

**WCHA Results Last Week**

**Monday, January 3:**

Minnesota 1 at Boston University 2

**Friday, January 7:**

Alaska Anchorage 1 at UMD1 WC OT  
 Wisconsin 6 at St. Cloud State 0 WC  
 Minnesota State 2 at North Dakota 3 WC  
 Michigan Tech 3 at Denver 0 WC

**Saturday, January 8:**

Colorado College 3 at Minnesota 2 WC OT  
 Minnesota State 4 at North Dakota 3 WC  
 Michigan Tech 0 at Denver 1 WC  
 Alaska Anchorage 4 at UMD 2 WC  
 Wisconsin 4 at St. Cloud State 2 WC

**Sunday, January 9:**

Colorado College 5 at Minnesota 3 WC

**2004-05 USCHO DI POII (1/3/05)**

|                      |      |        |     |    |
|----------------------|------|--------|-----|----|
| 1 Minnesota          | (37) | 16-4-0 | 596 | 1  |
| 2 Colorado C.        | (3)  | 16-3-1 | 560 | 2  |
| 3 Boston College     |      | 9-3-3  | 485 | 5  |
| 4 Michigan           |      | 14-5-1 | 473 | 3  |
| 5 Denver             |      | 13-5-1 | 436 | 7  |
| 6 Wisconsin          |      | 13-6-1 | 382 | 4  |
| 7 New Hampshire      |      | 12-4-2 | 376 | 6  |
| 8 North Dakota       |      | 13-7-2 | 296 | 8  |
| 9 Cornell            |      | 8-3-2  | 269 | 9  |
| 10 Ohio State        |      | 12-5-3 | 253 | 11 |
| 11 Boston University |      | 11-7-0 | 167 | 13 |
| 12 Harvard           |      | 9-4-2  | 160 | 10 |
| 13 Colgate           |      | 13-5-0 | 130 | 12 |
| 14 Vermont           |      | 11-6-3 | 105 | 14 |
| 15 Maine             |      | 10-8-3 | 43  | 15 |

**Others Receiving Votes:** Northern Michigan 40, Michigan State 18, Nebraska-Omaha 3, Alabama-Huntsville 2, Mass.-Lowell 2, Minnesota-Duluth 2, Brown 1, Minnesota State 1

**2004-05 USA TODAY/UHM DI POII (1/4/05)**

|                         |    |        |    |
|-------------------------|----|--------|----|
| 1. Minnesota, 503 (29)  | 1  | 16-4-0 | 14 |
| 2. Colorado C., 480 (5) | 2  | 16-3-1 | 14 |
| 3. Boston College, 423  | 5  | 9-3-3  | 14 |
| 4. Michigan, 408        | 3  | 14-5-1 | 14 |
| 5. Denver, 383          | 7  | 13-5-1 | 14 |
| 6. New Hampshire, 332   | 6  | 12-4-2 | 14 |
| 7. Wisconsin, 304       | 4  | 13-6-1 | 14 |
| 8. North Dakota, 269    | 8  | 13-7-2 | 14 |
| 9. Ohio State 235       | 10 | 12-5-3 | 12 |
| 10. Cornell 204         | 9  | 8-3-2  | 12 |
| 11. Harvard 162         | 11 | 9-4-2  | 3  |
| 12. Vermont, 127        | 12 | 11-6-3 | 5  |
| 13. Boston U., 95       | 13 | 11-7-0 | 6  |
| 14. Colgate U., 90      | 14 | 13-5-0 | 9  |
| 15. Maine, 32           | 15 | 10-8-3 | 14 |

**Others receiving votes:** Northern Michigan University, 22; Michigan State University, 6; College of the Holy Cross, 3; St. Cloud State University, 2

# 2004-05 St. Cloud State University Game Summaries

## GAME 1 - UNH Ice Breaker

St. Cloud State (0-0-1) vs. St. Lawrence (0-0-1)

Date: Oct 09, 2004 Location: Durham, NH

Attendance: 300 Start time: 2 p.m. End time: 4:30 p.m.

Total time: 2:30

SCSU 1 0 0 0 - 1

SLU 1 0 0 0 - 1

### SCORING

1 1st 01:03 SLU EV Macdonald, Matt/1 (Hogg/1)

2 1st 10:53 SCSU EV Konrad Reeder/1

### Goalies:

SC Tim Boron..... T 65:00 1 0 11 7 10 2 30

SLU McKenna, Mike...T 65:00 1 0 8 11 4 1 24

Shots by Period: SCSU 9 11 4 1 - 25

SLU 12 7 10 2 - 31

Power Play G-Att (Shots)

SCSU 0-9 (11) SLU 0-7 (11)

Penalties/Minutes

SCSU 10/20 SLU 9/18

SC Times Three stars:

1. Tim Boron
2. Mike McKenna
3. Konrad Reeder

## GAME 2 - UNH Ice Breaker

St. Cloud State (1-0-1) vs. Ohio State (0-2-0)

Date: Oct 10, 2004 Location: Durham, NH

Attendance: Start time: 2:00 End time: 4:10

Total time: 2:10

SCSU 0 1 2 - 3

OSU 0 0 1 - 1

### SCORING

1 2nd 07:55 SCSU PP Dave Iannazzo/1 (Matt Gens/1, Justin Fletcher/1)

2 3rd 04:18 SCSU EV T.J. McElroy/1 (Joe Jensen/1, Andrew Gordon)

3 3rd 07:12 OSU EV Campbell, Sam/1 (Hood, Kyle/1, Knapp, Dan/1)

4 3rd 14:57 SCSU EV Andrew Gordon/1 (Dave Iannazzo/1)

### Goalies:

SC Jason Montgomery.... W 60:00 1 0 7 9 18 34

OSU Caruso, Dave..... L 59:05 3 0 9 7 5 21

TM EMPTY NET..... 00:55 0 0 0 0 0 0

Shots by Period: SCSU 9 8 7 - 24

OSU 7 9 19 - 35

Power Play G-Att (Shots)

SCSU 1-7 (4) OSU 0-10 (13)

Penalties/Minutes by Prd

SCSU 12/24 OSU 9/18

SC Times Three stars:

1. Jason Montgomery
2. Dave Iannazzo
3. Andrew Gordon

## GAME 3

Northern Michigan (0-1-0, 0-0-0 CCHA)

vs. St. Cloud State (2-0-1, 0-0-0 WCHA)

Date: Oct 15, 2004 Location: St. Cloud, Minnesota

Arena: Nat'l Hockey Center Attendance: 5854

Start time: 7:07 pm End time: 9:31 pm Total: 2:24

NMU 0 0 1 - 1

SCSU 0 2 0 - 2

### SCORING

1 2nd 06:22 SCSU EV Andrew Gordon/2

(Joe Jensen/1, Justin Fletcher/2)

2 2nd 11:05 SCSU PP Matt Gens/1

(Dave Iannazzo/2, Nate Raduns/1)

3 3rd 14:41 NMU PP Andrew Contois/1

(Jamie Milam, Nathan Oystreck)

### Goalies:

NM Tuomas Tarkki..... L 59:44 2 0 12 12 8 32

EMPTY NET..... 00:16 0 0 0 0 0 0

SC Tim Boron..... W 60:00 1 0 8 3 7 18

Shots by Period: NMU 8 3 8 - 19

SCSU 12 14 8 - 34

Power Play G-Att (Shots)

NMU 1-7 (4) SCSU 1-9 (12)

Penalties/Minutes by Prd

NMU 10/20 SCSU 8/16

SC Times Three stars:

1. Tim Boron
2. Andrew Gordon
3. Matt Gens

## GAME 4

Northern Michigan (1-1-0, 0-0-0 CCHA) vs.

St. Cloud State (2-1-1, 0-0-0 WCHA)

Date: Oct 16, 2004 Location: St. Cloud, Minnesota

Arena: Nat'l Hockey Center Attendance: 5733

Start time: 7:08 pm End time: 9:26 pm Total time: 2:18

NMU 1 0 3 - 4

SCSU 1 1 0 - 2

### SCORING

1 1st 01:56 SCSU EV Billy Hengen/1

(Nate Dey/1, Gary Houseman/1)

2 1st 07:59 NMU PP Pat Bateman/1

(Darin Oliver/1, Jamie Milam/1)

3 2nd 13:44 SCSU EV Andrew Gordon/3

(Joe Jensen/3)

4 3rd 01:20 NMU PP Matt Siddall/1

(Patrick Murphy/1, Rob Lehtinen)

5 3rd 08:40 NMU PP Dirk Southern/1

(Pat Bateman/1, Mike Santorelli/1)

6 3rd 16:35 NMU EV Mike Santorelli/1

(Dirk Southern/1, Bill Zaniboni/1)

### Goalies:

NM Bill Zaniboni..... W 60:00 2 0 10 12 11 33

SC Jason Montgomery.... L 59:00 4 0 8 8 11 27

TM EMPTY NET..... 01:00 0 0 0 0 0 0

Shots by Period: NMU 9 8 14 - 31

SCSU 11 13 11 - 35

Power Play G-Att (Shots)

NMU 3-6 (12) SCSU 0-9 (12)

Penalties/Minutes by Prd

NMU 11/22 SCSU 9/18

SC Times Three stars:

1. Dirk Southern
2. Pat Bateman
3. Mike Santorelli

## GAME 5

St. Cloud State (2-2-1, 0-1-0 WCHA)

vs. Denver (2-2-0, 1-0-0 WCHA)

Date: Oct 22, 2004 Location: Denver, Colo.

Arena: Magness Arena Attendance: 6022

Start time: 7:38pm End time: 9:58pm Total time: 2:20

SCSU 0 2 0 - 2

DU 0 3 2 - 5

### SCORING

1 2nd 01:31 DU SH Gabe Gauthier/1

(Jeff Drummond/1)

2 2nd 06:28 SCSU SH Peter Szabo/1

(Matt Francis/1)

3 2nd 07:15 DU EV Geoff Paukovich/2

(Kevin Ulanski/1, Paul Stastny/1)

4 2nd 09:51 DU SH Gabe Gauthier/2

(Ryan Dingle/2, Jussi Halme/1)

5 2nd 18:36 SCSU EV Nate Raduns/1

(Dave Iannazzo/3)

6 3rd 19:13 DU EN Matt Carle/2

(Jeff Drummond/1)

7 3rd 19:20 DU EV Jon Foster/5

### Goalies:

SC Tim Boron..... L 59:47 4 0 12 17 8 37

TM EMPTY NET..... 00:13 0 1 0 0 0 0

DU Glenn Fisher..... W 60:00 2 0 7 7 3 17

Shots by Period: SCSU 7 9 3 - 19

DU 12 20 10 - 42

Power Play G-Att (Shots)

SCSU 0-11 (9) DU 0-10 (22)

Penalties/Minutes by Prd

SCSU 17/34 DU 18/36

SC Times Three stars:

1. Gabe Gauthier
2. Tim Boron
3. Matt Carle

## GAME 6

St. Cloud State (2-3-1, 0-2-0 WCHA)

vs. Denver (3-2-0, 2-0-0 WCHA)

Date: Oct 23, 2004 Location: Denver, Colo.

Arena: Magness Arena Attendance: 6087

Start time: 7:07pm End time: 9:25pm Total time: 2:18

SCSU 0 0 1 - 1

DU 3 3 0 - 6

### SCORING

1 1st 03:55 DU PP Jeff Drummond/1

(Gabe Gauthier/4, Brett Skinner/2)

2 1st 06:16 DU EV Ryan Helgason/1

(Brock McMorris/1, Ryan Dingle/2)

3 1st 11:51 DU EV Jeff Drummond/2

(Brett Skinner/3, Matt Carle/3)

4 2nd 06:11 DU EV Jon Foster/6 (Luke Fulghum/2)

5 2nd 08:07 DU EV Ryan Dingle/2

(Jon Foster/1, Andrew Thomas/1)

6 2nd 17:53 DU EV J.D. Corbin/1

7 3rd 03:08 SCSU EV Justin Fletcher/1

(Peter Szabo/1)

### Goalies:

SC Tim Boron..... L 40:00 6 0 7 4 0 11

SC Jason Montgomery.... 20:00 0 0 0 0 7 7

29 Peter Mannino..... W 60:00 1 0 7 10 8 25

Shots by Period: SCSU 7 10 9 - 26

DU 10 7 7 - 24

Power Play G-Att (Shots)

SCSU 0-6 (3) DU 1-9 (10)

Penalties/Minutes by Prd

SCSU 10/20 DU 7/14

SC Times Three stars:

1. Jeff Drummond
2. Jon Foster
3. Peter Mannino

# 2004-05 St. Cloud State University Game Summaries

## GAME 7

**SCSU (3-3-1, 0-2-0) vs. Princeton (0-1-0; 0-0-0)**

Date: Oct 29, 2004 Location: Princeton, N.J.

Arena: Hobey Baker Rink Attendance:1038

Start time:7:03 pm End time:9:05 pm Total time:2:02

**SCSU 2 5 0 - 7**

**PRIN 0 2 0 - 2**

### SCORING

1 1st 13:37 SCSU PP Andrew Gordon

(Joe Jensen, Billy Hengen)

2 1st 17:16 SCSU PP Mike Doyle

(Dave Iannazzo, Justin Fletcher)

3 2nd 00:36 PRIN EV Goeckner-Zoeller, Gr

(Paquin, Luc)

4 2nd 01:40 SCSU PP Andrew Gordon

(Billy Hengen, Joe Jensen)

5 2nd 02:11 SCSU EV Billy Hengen

(Matt Hartman, Nate Raduns)

6 2nd 03:12 SCSU EV Nate Dey (Justin Fletcher)

7 2nd 04:07 SCSU PP Brocklehurst, Aaron

(Billy Hengen, Joe Jensen)

8 2nd 04:26 PRIN EV Westgarth, Kevin

(Stankievich, Lan, Pridham, Erik)

9 2nd 13:09 SCSU SH Nate Raduns

(Billy Hengen, Matt Gens)

### Goalies:

SC Jason Montgomery.... W 60:00 2 0 7 5 4 16

PU Mansfield, Jeff..... L 24:07 6 0 10 2 0 12

PU Sklapsky, B.J..... 35:53 1 0 0 3 7 10

Shots by Period: SCSU 12 10 7 - 29

(PRIN 7 7 4 - 18)

Power Play G-Att (Shots)

SCSU 4-10 (10) PU 0-6 (6)

Penalties/Minutes

SCSU 8/16 PU 10/20

SC Times Three stars:

1. Billy Hengen

2. Joe Jensen

3. Andrew Gordon

## GAME 8

**St. Cloud State (4-3-1) vs. Yale (0-2-0)**

Date: Oct 30, 2004 Location: New Haven, Conn.

Arena: Ingalls Arena Attendance:2689

Start time:7:00 pm End time:9:20 pm Total time:2:20

**SCSU 3 3 4 - 10**

**YALE 0 0 0 - 0**

### SCORING

1 1st 13:04 SCSU PP Grant Clifton/1

(Andrew Gordon/2, Billy Hengen/5)

2 1st 03:32 SCSU PP Matt Gens/2

(Peter Szabo/2, Mike Doyle/1)

3 1st 00:44 SCSU SH Dave Iannazzo/2

(Casey Borer/1)

4 2nd 16:13 SCSU EV Dave Iannazzo/3

(Mike Doyle/2)

5 2nd 12:12 SCSU EV Billy Hengen/3

(Matt Hartman/2)

6 2nd 04:34 SCSU EV Billy Hengen/4

(Nate Raduns/3, Matt Hartman/3)

7 3rd 10:00 SCSU EV Joe Jensen/1

(Andrew Gordon/3, Brocklehurst, Aa/1)

8 3rd 07:21 SCSU PP Andrew Gordon/6

(Joe Jensen/7, Grant Clifton/1)

9 3rd 06:49 SCSU EV Matt Hartman/1

(Nate Raduns/4)

10 3rd 03:55 SCSU EV Brock Hooton/1

(Casey Borer/2)

### Goalies:

SC Tim Boron..... W 60:00 0 0 10 9 7 26

YU Matt Nodelski..... 20:00 4 0 0 0 7 7

YU Pete Cohen..... 20:00 3 0 0 5 0 5

YU Josh Gartner..... L 20:00 3 0 10 0 0 10

Shots by Period: SCSU 13 8 11 - 32

YALE 10 9 7 - 26

Power Play G-Att

SCSU 3-5 Yale 0-8

Penalties/Minutes by Prd

SCSU 7/14 Yale 7/14

SC Times Three stars:

1. Billy Hengen

2. Dave Iannazzo

3. Tim Boron

## GAME 9

**Michigan Tech (1-7-1, 1-6-0 WCHA) vs. St. Cloud State (5-3-1, 1-2-0 WCHA)**

Date: Nov 12, 2004 Location: St. Cloud, Minnesota

Arena: Nat'l Hockey Center Attendance:5836

Start time:7:08 pm End time:9:19 pm Total time:2:11

**MTU 0 1 0 - 1**

**SCSU 2 1 0 - 3**

### SCORING

1 1st 13:27 SCSU EV Nate Dey/2 (Billy Hengen/6)

2 1st 16:45 SCSU EV Mike Doyle/2

(Peter Szabo/3, Dave Iannazzo/5)

3 2nd 11:02 MTU PP Chris Conner/4

(Lars Helminen/8, Colin Murphy/11)

4 2nd 14:28 SCSU EV Matt Hartman/2

(Grant Clifton/2, Nate Dey/2)

### Goalies:

MTU Cam Ellsworth..... L 59:42 3 0 19 14 10 43

TM EMPTY NET..... 00:18 0 0 0 0 0 0

SC Tim Boron..... W 59:52 1 0 4 9 12 25

TM EMPTY NET..... 00:08 0 0 0 0 0 0

Shots by Period: MTU 4 10 12 - 26

SCSU 21 15 10 - 46

Power Play G-Att (Shots)

MTU 1-4 (8) SCSU 0-4 (7)

Penalties/Minutes

MTU 6/12 SCSU 6/12

SC Times Three stars:

1. Nate Dey

2. Cam Ellsworth

3. Joe Jensen

## GAME 10

**Michigan Tech (1-8-1, 1-7-0 WCHA)**

**vs. St. Cloud State (6-3-1, 2-2-0 WCHA)**

Date: Nov 13, 2004 Location: St. Cloud, Minnesota

Arena: Nat'l Hockey Center Attendance:6011

Start time:7:08 pm End time:9:17 pm Total time:2:09

**MTU 1 2 1 - 4**

**SCSU 1 3 2 - 6**

### SCORING

1 1st 06:09 SCSU EV Billy Hengen/5

(Matt Hartman/4, Chris Anderson/1)

2 1st 16:39 MTU EV Colin Murphy/4

(Taggart Desmet/1, Jake Obermeyer/1)

3 2nd 01:11 MTU PP Tyler Shelast/4

(Lars Helminen/9, Colin Murphy/12)

4 2nd 07:53 SCSU PP Joe Jensen/2

(Grant Clifton/3, Brocklehurst, Aa/2)

5 2nd 09:15 SCSU PP Dave Iannazzo/4

(Matt Gens/3, Peter Szabo/4)

6 2nd 13:20 MTU PP Tyler Shelast/5

(Colin Murphy/13, Lars Helminen/10)

7 2nd 18:06 SCSU EV Dave Iannazzo/5

(Josh Singer/1, Brock Hooton/1)

8 3rd 06:42 SCSU PP Peter Szabo/2

(Justin Fletcher/5)

9 3rd 07:58 MTU EV Colin Murphy/5

(Taggart Desmet/2)

10 3rd 15:31 SCSU PP Joe Jensen/3

(Grant Clifton/4, Billy Hengen/7)

### Goalies:

MT Cam Ellsworth..... L 60:00 6 0 12 24 7 43

SC Jason Montgomery.... W 59:51 4 0 6 6 7 19

TM EMPTY NET..... 00:09 0 0 0 0 0 0 OTM

Shots by Period: MTU 7 8 8 - 23

SCSU 13 27 9 - 49

Power Play G-Att (Shots)

MTU 2-6 (5) SCSU 4-7 (8)

Penalties/Minutes

MTU 8/16 SCSU 7/14

SC Times Three stars:

1. Joe Jensen

2. Colin Murphy

3. Dave Iannazzo

## GAME 11

**St. Cloud State (6-4-1, 2-3-0)**

**vs. North Dakota (6-5-2, 4-4-1)**

Date: Nov 19, 2004 Location: Grand Forks, N.D.

Arena: Engelstad Arena Attendance:10961

Start time:7:38 pm End time:9:49 Total time:2:11

**SCSU 1 0 0 - 1**

**UND 3 1 0 - 4**

### SCORING

1 1st 01:28 UND EV Mike Prpich/1

(Matt Greene/2, Quinn Fylling/1)

2 1st 03:30 UND EV Colby Genoway/2

(Drew Stafford/6, Travis Zajac/2)

3 1st 06:25 UND EV Travis Zajac/8

(Drew Stafford/7, Colby Genoway/12)

4 1st 13:10 SCSU EV Justin Fletcher/2

(Billy Hengen/8, Nate Raduns/5)

5 2nd 06:01 UND EV Mike Prpich/2

(Quinn Fylling/2, Robbie Bina/3)

### Goalies:

SC Tim Boron..... L 19:58 3 0 13 0 0 13

SC Jason Montgomery.... 40:02 1 0 0 5 5 10

ND Philippe Lamoureux.. W 60:00 1 0 8 5 6 19

Shots by Period: SCSU 9 5 6 - 20

UND 16 6 5 - 27

Power Play G-Att (Shots)

SCSU 0-4 (3) UND 0-2 (3)

Penalties/Minutes

SCSU 4/8 UND 6/12

## GAME 12

**St. Cloud State (6-5-1, 2-4-1)**

**vs. North Dakota (7-5-2, 5-4-1)**

Date: Nov 20, 2004 Location: Grand Forks, ND

Arena: Engelstad Arena Attendance:11125

Start time:7:07 pm End time:9:23 pm Total time:2:16

**SCSU 1 0 0 - 1**

**UND 1 1 1 - 3**

### SCORING

1 1st 06:32 UND EV Chris Porter/5

(Rastislav Spirko/9, Matt Greene/3)

2 1st 09:56 SCSU PP Dave Iannazzo/6

(Peter Szabo/5, Matt Gens/4)

3 2nd 00:17 UND EV Chris Porter/6

(Travis Zajac/2, Colby Genoway/13)

4 3rd 07:43 UND PP Rory McMahon/5

(Rastislav Spirko/9)

### Goalies:

SC Jason Montgomery.... L 58:27 3 0 10 6 7 23

TM EMPTY NET..... 01:33 0 0 0 0 0 0

ND Jordan Parise..... W 60:00 1 0 9 4 10 23

Shots by Period: SCSU 10 4 10 - 24

UND 11 7 8 - 26

Power Play G-Att (Shots)

SCSU 1-5 (10) UND 2-6 (3)

Penalties/Minutes

SCSU 7/14 UND 7/22

# 2004-05 St. Cloud State University Game Summaries

## GAME 13

Minnesota Duluth (6-5-2, 4-3-0 WCHA)  
vs. St. Cloud State (7-5-1, 3-4-0 WCHA)

Date: Nov 26, 2004 Location: St. Cloud, Minnesota  
Arena: Nat'l Hockey Center Attendance:5832  
Start time:7:08 pm End time:9:23 pm Total time:2:15  
**UMDM 0 2 0 - 2**  
**SCSU 2 2 0 - 4**

### SCORING

1 1st 04:51 SCSU EV Peter Szabo/3  
(Casey Borer/3, Dave Iannazzo/6)  
2 1st 08:53 SCSU PP Joe Jensen/4  
(Billy Hengen/9, Grant Clifton/5)  
3 2nd 06:04 SCSU PP Grant Clifton/2  
(Mike Doyle/3, Peter Szabo/6)  
4 2nd 06:30 UMDM EV Steve Czech/2  
(Jay Rosehill/2, Jeff McFarland/1)  
5 2nd 07:02 UMDM EV Marco Peluso/7  
(Matt McKnight/6)  
6 2nd 11:22 SCSU PP Mike Doyle/3  
(Justin Fletcher/6, Dave Iannazzo/7)

### Goalies:

MD Isaac Reichmuth..... L 58:39 4 0 16 9 8 33  
TM EMPTY NET..... 01:21 0 0 0 0 0 0  
SC Jason Montgomery..... W 60:00 2 0 7 9 8 24

Shots by Period: UMDM 7 11 8 - 26  
SCSU 18 11 8 - 37

Power Play G-Att (Shots)  
UMD 0-6 (5) SCSU 3-6 (9)

Penalties/Minutes UMD 8/16 SCSU 8/16

### SC Times Three stars:

1. Mike Doyle
2. Peter Szabo
3. Grant Clifton

## GAME 14

Minnesota Duluth (7-5-2, 5-3-0 WCHA)  
vs. St. Cloud State (7-6-1, 3-5-0 WCHA)

Date: Nov 27, 2004 Location: St. Cloud, Minnesota  
Arena: Nat'l Hockey Center Attendance:5873  
Start time:7:08 pm End time:9:27 pm Total time:2:19  
**UMDM 0 0 3 - 3**  
**SCSU 1 0 0 - 1**

### SCORING

1 1st 08:14 SCSU EV Dave Iannazzo/7  
(Peter Szabo/7, Matt Gens/5)  
2 3rd 01:20 UMDM PP Evan Schwabe/8  
(Marco Peluso/6, Steve Czech/)  
3 3rd 17:43 UMDM EV Marco Peluso/8  
(Steve Czech/5, Nick Anderson/1)  
4 3rd 19:11 UMDM EN Nick Anderson/1  
(Steve Czech/7, Brett Hammond/5)

### Goalies:

MD Josh Johnson..... W 60:00 1 0 8 8 13 29  
SC Jason Montgomery..... L 59:47 2 0 7 12 12 31  
TM EMPTY NET..... 00:13 0 1 0 0 0 0

Shots by Period: UMD 7 12 15 - 34  
SCSU 9 8 13 - 30

Power Play G-Att UMD 1-5 (8) SCSU 0-5 (7)

Penalties/Minutes by Prd UMD 8/16 SCSU 10/28

### SC Times Three stars:

1. Josh Johnson
2. Marco Peluso
3. Dave Iannazzo

## GAME 15

St. Cloud State (8-6-1, 4-5-0 WCHA)  
vs. Minnesota State (5-6-2, 2-6-1 WCHA)

Date: Dec 03, 2004 Location: Mankato, Minn.  
Arena: MW Civic Center Attendance:3483  
Start time:7:37 pm End time:9:50 pm Total time:2:13  
**SCSU 1 1 2 - 4**  
**MSU 0 0 2 - 2**

### SCORING

1 1st 17:37 SCSU PP Justin Fletcher/3  
(Peter Szabo/8, Matt Gens/8)  
2 2nd 10:08 SCSU EV Mike Doyle/4  
3 3rd 09:00 SCSU EV Dave Iannazzo/8  
(Matt Francis/2, Justin Fletcher/7)  
4 3rd 15:42 SCSU EV Josh Singer/1  
5 3rd 16:04 MSU EV Brad Thompson/2  
(Jon Dubel/2, Ryan McKelvie/4)  
6 3rd 16:50 MSU EV Austin Sutter/3  
(Jake Brenk/3, Rob Rankin/3)

### Goalies:

SC Tim Boron..... W 60:00 2 0 9 16 7 32  
MS Jon Volp..... L 59:45 4 0 10 6 13 29  
TM EMPTY NET..... 00:15 0 0 0 0 0 0

Shots by Period: SCSU 11 7 15 - 33  
MSU 9 16 9 - 34

Power Play G-Att SCSU 1-4 (6) MSU 0-4 (8)

Penalties/Minutes by Prd SCSU 5/10 MSU 5/10

### SC Times Three stars:

1. Tim Boron
2. Brad Thompson
3. Mike Doyle

## GAME 16

Minnesota State (6-6-2, 3-6-1 WCHA)  
vs. St. Cloud State (8-7-1, 4-6-0 WCHA)

Date: Dec. 4, 2004 Location: St. Cloud, Minnesota  
Arena: Nat'l Hockey Center Attendance:6002  
Start time:7:08 pm End time:9:19 pm Total time:2:11  
**MSU 0 2 2 - 4**  
**SCSU 0 2 1 - 3**

### SCORING

1 2nd 10:24 SCSU EV Aaron Brocklehurst/2 -  
2 2nd 14:05 MSU EV Rob Rankin/3  
(Joel Hanson/3, Austin Sutter/1)  
3 2nd 14:29 SCSU EV Nate Dey/3  
(Josh Singer/2)  
4 2nd 16:48 MSU EV Travis Morin/7  
(Brock Becker/3)  
5 3rd 02:13 MSU PP Jeff Marler/1  
(Kurtis Kisio/6, Kyle Peto/8)  
6 3rd 13:43 SCSU PP Justin Fletcher/4  
(Mike Doyle/4, Dave Iannazzo/8)  
7 3rd 14:18 MSU EV Brock Becker/4  
(Travis Morin/6)

### Goalies:

MSU Chris Clark..... W 60:00 3 0 6 12 8 26  
SC Tim Boron..... L 58:33 4 0 12 9 6 27  
TM EMPTY NET..... 01:27 0 0 0 0 0 0

Shots by Period: MSU 12 11 8 - 31  
SCSU 6 14 9 - 29

Power Play G-Att MSU 1-4 (5) SCSU 1-4 (7)

Penalties/Minutes by Prd MSU 7/22 SCSU 6/12

### SC Times Three stars:

1. Brock Becker
2. Travis Morin
3. Justin Fletcher

## GAME 17

Minnesota (12-4-0, 8-4-0 WCHA)  
vs. St. Cloud State (8-8-1, 4-7-0 WCHA)

Date: Dec 10, 2004 Location: St. Cloud, Minnesota  
Arena: Nat'l Hockey Center Attendance:6685  
Start time:7:09 pm End time:9:30 pm Total time:2:21  
**MINN 1 0 0 1 - 2**  
**SCSU 0 1 0 0 - 1**

### SCORING

1 1st 18:15 MINN EV Gino Guyer/4  
(Judd Stevens/2, Tyler Hirsch/17)  
2 2nd 05:07 SCSU EV Matt Hartman/3  
3 OT 02:21 MINN EV Jake Fleming/2  
(Nate Hagemo/2, Andy Sertich/3)

### Goalies:

UM Kellen Briggs..... W 62:21 1 0 5 10 6 1 22  
SC Tim Boron..... OTL 62:21 2 0 14 7 6 5 32

Shots by Period: MINN 15 7 6 6 - 34  
SCSU 5 11 6 1 - 23

Power Play G-Att UM 0-6 (12) SCSU 0-8 (9)

Penalties/Minutes by Prd UM 11/22 SCSU 9/18

### SC Times Three stars:

1. Jake Fleming
2. Kellen Briggs
3. Tim Boron

## GAME 18

St. Cloud State (8-9-1, 4-8-0 WCHA)  
vs. Minnesota (13-4-0, 9-3-0 WCHA)

Date: Dec 11, 2004 Location: Minneapolis, Minn.  
Arena: Mariucci Arena Attendance:10067  
Start time:7:05 pm End time:9:21 pm Total time:2:16  
**SCSU 0 1 1 - 2**  
**MINN 0 1 3 - 4**

### SCORING

1 2nd 14:55 SCSU EV Andrew Gordon/6  
(Joe Jensen/8, Justin Fletcher/8)  
2 2nd 17:58 MINN PP Danny Irmen/10  
(Tyler Hirsch/18, Chris Harrington/7)  
3 3rd 02:13 MINN PP Ryan Potulny/17  
(Danny Irmen/11, Tyler Hirsch/19)  
4 3rd 10:58 MINN PP Andy Sertich/3  
(Mike Howe/4, Derek Peltier/4)  
5 3rd 17:33 SCSU EV Brock Hooton/2  
(Matt Hartman/5)  
6 3rd 19:58 MINN EN Gino Guyer/5  
(Danny Irmen/12)

### Goalies:

SC Tim Boron..... L 59:21 3 0 15 11 5 31  
TM EMPTY NET..... 00:39 0 1 0 0 0 0  
UM Kellen Briggs..... W 60:00 2 0 8 10 7 25

Shots by Period: SCSU 8 11 8 - 27  
MINN 15 12 8 - 35

Power Play G-Att SCSU 0-5 (8) UM 3-6 (10)

Penalties/Minutes by Prd SCSU 8/16 UM 7/14

### SC Times Three stars:

1. Danny Irmen
2. Kellen Briggs
3. Tim Boron

# 2004-05 St. Cloud State University Game Summaries

## GAME 19

St. Cloud State (9-9-1, 4-8-0 WCHA) vs.  
MAINE BLACK BEARS (10-7-3, 6-3-1 HE)

Date: Dec 28, 2004 Location: ESTERO, FLORIDA  
Arena: GERMAIN ARENA Attendance: 5000  
Start time: 4:00 End time: 6:38 Total time: 2:38  
SCSU 0 1 0 0 - 1  
MAIN 0 1 0 0 - 1

### SCORING

1 2nd 13:32 SCSU PP Grant Clifton  
(Joe Jensen, Brock Hooton)  
2 2nd 16:01 MAIN EV RYAN, BILLY  
(BARNES, TROY, LUNDIN, MIKE)

### Goalsies:

SC Tim Boron..... T 65:00 1 0 11 11 4 0 - 26  
UM Jimmy Howard. T 65:00 1 0 7 9 5 3 - 24

Shots by Period: SCSU 7 10 5 3 - 25  
MAINE 11 12 4 0 - 27

### Power Play G-Att (Shots)

SCSU 1-6 (3) Maine 0-5 (6)

### Penalties/Minutes

SCSU 9-18 Maine 9-18

### Three stars:

1. Tim Boron
2. Grant Clifton
3. Jimmy Howard

## GAME 20

St. Cloud State (8-10-2, 4-8-0 WCHA)  
vs. BOSTON COLLEGE EAGLE (8-3-3; 4-1-3)

Date: Dec 29, 2004 Location: ESTERO, FLORIDA  
Arena: GERMAIN ARENA Attendance: 6550  
Start time: 7:35 End time: 11:30 p.m.  
SCSU 1 0 0 0 - 1  
SCSU 0 1 0 1 - 2

### SCORING

1 1st 07:39 SCSU EV Mike Doyle  
(Nate Dey, Justin Fletcher)  
2 2nd 12:01 BC PP SHANNON, RYAN  
(SPINA, DAVE, BOYLE, BRIAN)  
3 02 00:59 BC EV COLLINS, CRIS  
(MURPHY, RYAN)

### Goalsies:

SC Tim Boron.....OTL 80:59 2 0 6 13 11 12 0 42  
BC Matti Kaltainen W 80:59 1 0 9 11 9 6 0 35

Shots by Period: SCSU 10 11 9 6 0 - 36  
BC 6 14 11 12 1 - 44

### Power Play G-Att

SCSU 0-11 (11) BC 1-10 (15)

### Penalties/Minutes by Prd

SCSU 11/22 BC 12/24

### SC Times Three stars:

1. Tim Boron
2. Matti Kaltainen
3. Cris Collins

## GAME 21

Wisconsin (14-6-1, 11-4-0 WCHA)  
vs. St. Cloud State (8-11-2, 4-9-0 WCHA)

Date: Jan 07, 2005 Location: St. Cloud, Minnesota  
Arena: Nat'l Hockey Center Attendance: 5861  
Start time: 7:08 pm End time: 9:16 pm Total time: 2:08  
SCSU 1 0 0 0 - 1  
SCSU 0 1 0 1 - 2

### SCORING

1 1st 04:05 UW PP Tom Gilbert/3  
(Andrew Joudrey/11, Jake Dowell/7)  
2 1st 14:09 UW EV Andrew Joudrey/5  
(Matt Ford/2, Ryan MacMurphy/11)  
3 2nd 00:20 UW PP Tom Gilbert/4  
(Jake Dowell/8, Matt Ford/3)

4 2nd 12:38 UW SH A.J. Degenhardt/3  
(Jake Dowell/9, Kyle Klubertanz/12)  
5 3rd 06:57 UW EX John Funk/2  
(Adam Burish/5, Andrew Joudrey/12)  
6 3rd 13:14 UW PP John Funk/3  
(Matt Auffrey/3, Joe Pavelski/16)

### Goalsies:

UW Bernd Bruckler..... W 59:04 0 0 8 13 9 30  
TM EMPTY NET..... 00:56 0 0 0 0 0 0  
SC Tim Boron..... L 60:00 6 0 10 7 8 25

Shots by Period: UW 12 9 10 - 31  
SCSU 8 13 9 - 30

### Power Play G-Att

UW 3-3 (6) SCSU 0-4

### (7) Penalties/Minutes by Prd

UW 5/10 SCSU 4/8

### SC Times Three stars:

1. Tom Gilbert
2. Andrew Joudrey
3. Bernd Bruckler

## GAME 22

Wisconsin (15-6-1, 12-4-0 WCHA)  
vs. St. Cloud State (8-12-2, 4-10-0 WCHA)

Date: Jan 08, 2005 Location: St. Cloud, Minnesota  
Arena: Nat'l Hockey Center Attendance: 5909  
Start time: 7:08 pm End time: 9:17 pm Total time: 2:09  
UW 1 2 1 - 4  
SCSU 1 0 1 - 2

### SCORING

1 1st 16:00 UW PP Ryan MacMurphy/6  
(Jake Dowell/10, Andrew Joudrey/13)  
2 1st 16:57 SCSU SH Dave Iannazzo/9  
(Matt Stephenson/1, Casey Borer/4)  
3 2nd 08:28 UW EV Ryan MacMurphy/7  
(Matt Ford/4, Andrew Joudrey/14)  
4 2nd 10:12 UW EV Ryan MacMurphy/8  
(Tom Gilbert/4)  
5 3rd 08:41 SCSU PP Andrew Gordon/8  
(Matt Hartman/6, Peter Szabo/9)  
6 3rd 19:08 UW EN Ryan MacMurphy/9  
(Jake Dowell/11)

### Goalsies:

UW Bernd Bruckler..... W 60:00 2 0 6 2 8 16  
SC Tim Boron..... L 59:17 3 0 9 11 11 31  
TM EMPTY NET..... 00:43 0 1 0 0 0 0

Shots by Period: UW 10 13 12 - 35  
SCSU 7 2 9 - 18

### Power Play G-Att (Shots)

UW 1-6 (11) SCSU 1-4 (2)

### Penalties/Minutes

UW 5/18 SCSU 6/12

### SC Times Three stars:

1. Ryan MacMurphy
2. Andrew Joudrey
3. Andrew Gordon

# 2004-05 St. Cloud State Game By Game Stats/Results

| Game                 | Score            | GWG/GTG  | Shots on Goal |      | Power Play |      | Penalty Kill |       | Penalty-Min. |       | Goalie of Record |                   |
|----------------------|------------------|----------|---------------|------|------------|------|--------------|-------|--------------|-------|------------------|-------------------|
|                      |                  |          | SCSU          | Opp. | SCSU       | Opp. | SCSU         | Opp.  | SCSU         | Opp.  | SCSU             | Opp.              |
| 10/9 vs. SLU*        | T, 1-1           | Reeder   | 24            | 30   | 0-9        | 0-7  | 10-10        | 9-9   | 10 (20)      | 9-18  | Boron, 30 svs    | Mckenna, 24       |
| 10/10 vs. OSU*       | W, 3-1           | McElroy  | 24            | 35   | 1-7        | 0-10 | 10-10        | 6-7   | 12-24        | 9-18  | Monty, 34 svs    | Carruso, 21       |
| 10/15 vs. NMU        | W, 2-1           | Gens     | 34            | 19   | 1-9        | 1-7  | 6-7          | 8-9   | 8-16         | 10-20 | Boron, 18 svs    | Tarkki, 32        |
| 10/16 vs. NMU        | L, 4-2           | -        | 35            | 31   | 0-9        | 3-6  | 3-6          | 9-9   | 9-18         | 11-22 | Monty, 27 svs    | Zanboni, 33       |
| 10/22 at DU#         | L, 5-2           | -        | 19            | 42   | 0-11       | 0-10 | 10-10        | 11-11 | 17-34        | 18-36 | Boron, 37 svs    | Fisher, 17 svs    |
| 10/23 at DU*         | L, 6-1           | -        | 26            | 24   | 0-6        | 1-9  | 8-9          | 6-6   | 10-20        | 7-14  | Boron, 11 svs    | Mannino, 25       |
| 10/29 at Princeton   | W, 7-2           | Gordon   | 29            | 18   | 4-10       | 0-6  | 6-6          | 6-10  | 8-16         | 10-20 | Monty, 16 svs    | Mansfield, 12 svs |
| 10/30 at Yale        | W, 10-0          | Clifton  | 32            | 26   | 3-5        | 0-8  | 8-8          | 2-5   | 9-18         | 8-16  | Boron, 26 svs    | Gartner, 10 svs   |
| 11/12 vs. MTU#       | W, 3-1           | Doyle    | 46            | 26   | 0-4        | 1-4  | 3-4          | 4-4   | 6-12         | 6-12  | Boron, 25 svs    | Ellsworth, 43     |
| 11/13 vs. MTU#       | W, 6-4           | Szabo    | 49            | 23   | 4-7        | 2-6  | 4-6          | 3-7   | 7-14         | 8-16  | Monty, 19 svs    | Ellsworth, 43     |
| 11/19 at UNND#       | L, 4-1           | -        | 20            | 27   | 0-4        | 0-2  | 2-2          | 4-4   | 4-8          | 5-12  | Boron, 13 svs    | Lamoureux, 19     |
| 11/20 at UNND#       | L, 3-1           | -        | 24            | 26   | 1-5        | 2-6  | 4-6          | 4-5   | 7-14         | 7-22  | Monty, 23        | Parise, 23        |
| 11/26 vs. UMD#       | W, 4-2           | Clifton  | 37            | 26   | 3-6        | 0-6  | 6-6          | 3-6   | 8-16         | 8-16  | Monty, 24        | Reichmuth, 33     |
| 11/27 vs. UMD#       | L, 3-1           | -        | 30            | 34   | 0-5        | 1-5  | 4-5          | 5-5   | 10-28        | 8-16  | Monty, 31        | Johnson, 29       |
| 12/3 at MSU#         | W, 4-2           | Iannazzo | 33            | 34   | 1-4        | 0-4  | 4-4          | 3-4   | 5-10         | 5-10  | Boron, 32        | Volp, 29          |
| 12/4 vs. MSU#        | L, 4-3           | -        | 29            | 31   | 1-4        | 1-4  | 3-4          | 3-4   | 6-12         | 7-22  | Boron, 27        | Clark, 26         |
| 12/10 vs. UMD#       | L, 2-1 OT-       | -        | 23            | 34   | 0-8        | 0-6  | 6-6          | 8-8   | 9-18         | 11-22 | Boron, 32        | Briggs, 22        |
| 12/11 at UM#         | L, 4-2           | -        | 27            | 35   | 0-5        | 3-6  | 3-6          | 5-5   | 8-16         | 7-14  | Boron, 31        | Briggs, 25        |
| 12/28 vs. Maine%     | T, 1-1 OTClifton |          | 25            | 27   | 1-6        | 0-5  | 5-5          | 5-6   | 9-18         | 9-18  | Boron, 26        | Howard, 24        |
| 12/29 vs. Boston C.% | L, 2-1 OT-       |          | 36            | 44   | 0-11       | 1-10 | 9-10         | 11-11 | 11-22        | 12-24 | Boron, 42        | Kaltainen, 35     |
| 1/7 vs. UW#          | L, 6-0           | -        | 30            | 31   | 0-4        | 3-3  | 0-3          | 4-4   | 4-8          | 5-10  | Boron, 25        | Bruckler, 30      |
| 1/8 vs. UW#          | L, 4-2           | -        | 18            | 35   | 1-4        | 1-6  | 5-6          | 3-4   | 6-12         | 5-18  | Boron, 31        | Bruckler, 16      |
| 1/14 at UMD#         |                  |          |               |      |            |      |              |       |              |       |                  |                   |
| 1/15 at UMD#         |                  |          |               |      |            |      |              |       |              |       |                  |                   |
| 1/21 vs. DU#         |                  |          |               |      |            |      |              |       |              |       |                  |                   |
| 1/22 vs. DU#         |                  |          |               |      |            |      |              |       |              |       |                  |                   |
| 1/28 vs. SHU         |                  |          |               |      |            |      |              |       |              |       |                  |                   |
| 1/29 vs. SHU         |                  |          |               |      |            |      |              |       |              |       |                  |                   |
| 2/4 at UAAA#         |                  |          |               |      |            |      |              |       |              |       |                  |                   |
| 2/5 at UAAA#         |                  |          |               |      |            |      |              |       |              |       |                  |                   |
| 2/11 at CG#          |                  |          |               |      |            |      |              |       |              |       |                  |                   |
| 2/12 at CG#          |                  |          |               |      |            |      |              |       |              |       |                  |                   |
| 2/18 vs. MSU#        |                  |          |               |      |            |      |              |       |              |       |                  |                   |
| 2/25 at UMD#         |                  |          |               |      |            |      |              |       |              |       |                  |                   |
| 2/26 at UMD#         |                  |          |               |      |            |      |              |       |              |       |                  |                   |
| 3/4 vs. UNND#        |                  |          |               |      |            |      |              |       |              |       |                  |                   |
| 3/5 vs. UNND#        |                  |          |               |      |            |      |              |       |              |       |                  |                   |

\* UNH Ice Breaker # WCHA Games % Everblades Classic

# 2004-05 St. Cloud State Game By Game Stats/Results

| Name               | 1 Boron   | 3 McElroy | 4 Anderson | 5 Singer | 6 Borer | 8 Raduns | 9 Garrity | 10 Hartman | 11 Iannazzo | 12 Doyle | 13 Dey | 15 Francis | 16 Mijelleli |
|--------------------|-----------|-----------|------------|----------|---------|----------|-----------|------------|-------------|----------|--------|------------|--------------|
| 10/9 vs. SLU*      | T, 30 svs | 0-0-0     | 0-0-0      | DNP      | 0-0-0   | 0-0-0    | DNP       | DNP        | 0-0-0       | 0-0-0    | 0-0-0  | 0-0-0      | DNP          |
| 10/10 vs. OSU*     | DNP       | 1-0-1#    | DNP        | DNP      | 0-0-0   | 0-0-0    | DNP       | DNP        | 1-1-2*      | 0-0-0    | 0-0-0  | 0-0-0      | 0-0-0        |
| 10/15 vs. NMU      | W, 18 svs | 0-0-0     | DNP        | DNP      | 0-0-0   | 0-1-1    | 0-0-0     | 0-1-1      | 0-1-1       | DNP      | 0-0-0  | 0-0-0      | DNP          |
| 10/16 vs. NMU      | DNP       | 0-0-0     | 0-0-0      | DNP      | 0-0-0   | DNP      | 0-0-0     | DNP        | DNP         | 0-0-0    | 0-1-1  | 0-0-0      | 0-0-0        |
| 10/22 at DU#       | L, 37 svs | 0-0-0     | DNP        | DNP      | 0-0-0   | 0-0-1    | 0-0-0     | 0-0-0      | 0-1-1       | 0-0-0    | 0-0-0  | 0-0-0      | DNP          |
| 10/23 at DU*       | L, 11 svs | 0-0-0     | DNP        | DNP      | 0-0-0   | 1-0-1    | DNP       | 0-0-0      | 0-0-0       | 0-0-0    | 0-0-0  | 0-0-0      | DNP          |
| 10/29 at Princeton | DNP       | 0-0-0     | DNP        | DNP      | 0-0-0   | 1-1-2a   | DNP       | 0-1-1      | 0-1-1       | 1-0-1*   | 1-0-1  | 0-0-0      | DNP          |
| 10/30 at Yale      | W, 26 svs | DNP       | 0-0-0      | DNP      | 0-2-2   | 0-2-2    | DNP       | 1-2-3      | 2-0-2a      | 0-2-2    | 0-0-0  | 0-0-0      | DNP          |
| 11/12 vs. MTU#     | W, 25 svs | DNP       | DNP        | DNP      | 0-0-0   | DNP      | 0-0-0     | 1-0-1      | 0-1-1       | 1-0-1#   | 1-1-2  | 0-0-0      | DNP          |
| 11/13 vs. MTU#     | DNP       | DNP       | 0-1-1      | DNP      | 0-0-0   | DNP      | 0-1-1     | 0-1-1      | 2-0-2**     | 0-0-0    | 0-0-0  | 0-0-0      | DNP          |
| 11/19 at UND#      | L, 13 svs | DNP       | 0-0-0      | DNP      | 0-0-0   | 0-1-1    | DNP       | 0-0-0      | 0-0-0       | 0-0-0    | 0-0-0  | 0-0-0      | DNP          |
| 11/20 at UND#      | DNP       | DNP       | 0-0-0      | DNP      | 0-0-0   | 0-0-0    | 0-0-0     | 0-0-0      | 1-0-1*      | 0-0-0    | 0-0-0  | 0-0-0      | DNP          |
| 11/26 vs. UMD#     | DNP       | 0-0-0     | DNP        | DNP      | 0-1-1   | 0-0-0    | DNP       | 0-0-0      | 0-2-2       | 1-1-2*   | 0-0-0  | 0-0-0      | 0-0-0        |
| 11/27 vs. UMD#     | DNP       | 0-0-0     | DNP        | DNP      | 0-0-0   | 0-0-0    | 0-0-0     | 0-0-0      | 1-0-1       | 0-0-0    | 0-0-0  | 0-0-0      | DNP          |
| 12/3 at MSU#       | W, 32 svs | 0-0-0     | DNP        | DNP      | 0-0-0   | 0-0-0    | 0-0-0     | 0-0-0      | 1-0-1#      | 0-0-0    | 0-0-0  | 0-1-1      | DNP          |
| 12/4 vs. MSU#      | L, 27 svs | DNP       | 0-0-0      | 0-1-1    | 0-0-0   | 0-0-0    | DNP       | 0-0-0      | 0-1-1       | 0-1-1    | 0-0-0  | 0-0-0      | DNP          |
| 12/10 vs. UM#      | L, 32 svs | DNP       | 0-0-0      | 0-0-0    | 0-0-0   | 0-0-0    | DNP       | 1-0-1      | 0-0-0       | 0-0-0    | 0-0-0  | 0-0-0      | DNP          |
| 12/11 at UM#       | L, 31 svs | 0-0-0     | DNP        | DNP      | 0-0-0   | DNP      | 0-0-0     | 0-1-1      | 0-0-0       | 0-0-0    | 0-0-0  | 0-0-0      | DNP          |
| 12/28 vs. Maine%   | T, 26 svs | 0-0-0     | 0-0-0      | 0-0-0    | DNP     | DNP      | 0-0-0     | 0-0-0      | 0-0-0       | 0-0-0    | 0-0-0  | 0-0-0      | DNP          |
| 12/29 vs. BC%      | L, 42 svs | 0-0-0     | 0-0-0      | 0-0-0    | DNP     | DNP      | 0-0-0     | 0-0-0      | 0-0-0       | 1-0-1    | 0-1-1  | 0-0-0      | DNP          |
| 1/7 vs. UW#        | L, 25 svs | 0-0-0     | 0-0-0      | 0-0-0    | 0-0-0   | DNP      | 0-0-0     | 0-0-0      | 0-0-0       | 0-0-0    | 0-0-0  | 0-0-0      | DNP          |
| 1/8 vs. UW#        | L, 31 svs | 0-0-0     | DNP        | DNP      | 0-1-1   | DNP      | 0-0-0     | 0-1-1      | 1-0-1a      | DNP      | 0-0-0  | 0-0-0      | DNP          |
| 1/14 at UMD#       |           |           |            |          |         |          |           |            |             |          |        |            |              |
| 1/15 at UMD#       |           |           |            |          |         |          |           |            |             |          |        |            |              |
| 1/21 vs. DU#       |           |           |            |          |         |          |           |            |             |          |        |            |              |
| 1/22 vs. DU#       |           |           |            |          |         |          |           |            |             |          |        |            |              |
| 1/28 vs. SHU       |           |           |            |          |         |          |           |            |             |          |        |            |              |
| 1/29 vs. SHU       |           |           |            |          |         |          |           |            |             |          |        |            |              |
| 2/4 at UAA#        |           |           |            |          |         |          |           |            |             |          |        |            |              |
| 2/5 at UAA#        |           |           |            |          |         |          |           |            |             |          |        |            |              |
| 2/11 at CC#        |           |           |            |          |         |          |           |            |             |          |        |            |              |
| 2/12 at CC#        |           |           |            |          |         |          |           |            |             |          |        |            |              |
| 2/18 vs. MSU#      |           |           |            |          |         |          |           |            |             |          |        |            |              |
| 2/25 at UM#        |           |           |            |          |         |          |           |            |             |          |        |            |              |
| 2/26 at UM#        |           |           |            |          |         |          |           |            |             |          |        |            |              |
| 3/4 vs. UND#       |           |           |            |          |         |          |           |            |             |          |        |            |              |
| 3/5 vs. UND#       |           |           |            |          |         |          |           |            |             |          |        |            |              |

Goal Designator: \* Power Play, ^ SHG, # GWG, % GTG, + ENG

# 2004-05 St. Cloud State Game By Game Stats/Results

| Opponent           | 17 Gordon | 19 Houseman | 20 Hengen | 21 Ciafron | 22 Szabo | 23 Jensen | 24 Gens | 25 Stephenson | 26 Brocklehurst | 27 Fletcher | 32 Hooton | 33 Reeder | 35 Lyerly | 40 Montgomery |
|--------------------|-----------|-------------|-----------|------------|----------|-----------|---------|---------------|-----------------|-------------|-----------|-----------|-----------|---------------|
| 10/9 vs. SLU*      | 0-0-0     | 0-0-0       | 0-0-0     | 0-0-0      | 0-0-0    | 0-0-0     | 0-0-0   | 0-0-0         | DNP             | 0-0-0       | 0-0-0     | 1-0-1     | DNP       | DNP           |
| 10/10 vs. OSU*     | 1-1-2     | DNP         | 0-0-0     | 0-0-0      | 0-0-0    | 0-1-1     | 0-1-1   | 0-0-0         | DNP             | 0-1-1       | 0-0-0     | 0-0-0     | DNP       | W, 34 svs     |
| 10/15 vs. NMU      | 1-0-1*    | DNP         | 0-0-0     | 0-0-0      | 0-0-0    | 0-1-1     | 1-0-1*# | DNP           | 0-0-0           | 0-1-1       | 0-0-0     | 0-0-0     | DNP       | DNP           |
| 10/16 vs. NMU      | 1-0-1     | 0-1-1       | 1-0-1     | DNP        | 0-0-0    | 0-1-1     | 0-0-0   | 0-0-0         | DNP             | 0-0-0       | 0-0-0     | 0-0-0     | DNP       | L, 27 svs     |
| 10/22 at DU*       | DNP       | 0-0-0       | 0-0-0     | 0-0-0      | 1-0-1^   | 0-0-0     | 0-0-0   | DNP           | 0-0-0           | 0-0-0       | DNP       | 0-0-0     | DNP       | 7 svs         |
| 10/23 at DU*       | 0-0-0     | 0-0-0       | 0-0-0     | 0-0-0      | 0-1-1    | 0-0-0     | 0-0-0   | DNP           | 0-0-0           | 0-0-0       | DNP       | 0-0-0     | DNP       | 7 svs         |
| 10/29 at Princeton | 2-0-2**#  | DNP         | 1-4-5     | 0-0-0      | 0-0-0    | 0-3-3     | 0-1-1   | DNP           | 1-0-1*          | 0-0-0       | 0-0-0     | 0-0-0     | DNP       | W, 16 svs     |
| 10/30 at Yale      | 1-2-3*    | 0-0-0       | 2-1-3     | 1-1-2#     | 0-1-1    | 1-1-2     | 1-0-1*  | DNP           | 0-0-0           | 0-0-0       | 1-0-1     | DNP       | DNP       | DNP           |
| 11/12 vs. MTU#     | 0-0-0     | 0-0-0       | 0-1-1     | 0-1-1      | 0-1-1    | 0-0-0     | 0-0-0   | 0-0-0         | 0-0-0           | 0-0-0       | 0-0-0     | 0-0-0     | DNP       | DNP           |
| 11/13 vs. MTU#     | 0-0-0     | 0-0-0       | 1-1-2     | 0-2-2      | 1-1-2*#  | 2-0-2**   | 0-1-1   | DNP           | 0-0-0           | 0-1-1       | 0-0-0     | 0-0-0     | DNP       | W, 19 svs     |
| 11/19 at UND#      | 0-0-0     | 0-0-0       | 0-1-1     | 0-0-0      | 0-0-0    | 0-0-0     | 0-0-0   | DNP           | 0-0-0           | 0-0-0       | 0-0-0     | 0-0-0     | DNP       | 10 svs        |
| 11/20 at UND#      | 0-0-0     | DNP         | 0-0-0     | 0-0-0      | 0-1-1    | 0-0-0     | 0-1-1   | DNP           | 0-0-0           | 0-0-0       | 0-0-0     | 0-0-0     | DNP       | L, 23 svs     |
| 11/26 vs. UMD#     | 0-0-0     | DNP         | 0-0-0     | 1-1-2**    | 1-1-2    | 1-0-1*    | 0-0-0   | DNP           | 0-0-0           | 0-1-1       | 0-0-0     | 0-0-0     | DNP       | W, 24 svs     |
| 11/27 vs. UMD#     | 0-0-0     | DNP         | 0-1-1     | 0-0-0      | 0-1-1    | 0-0-0     | 0-0-0   | DNP           | 0-0-0           | 0-0-0       | 0-0-0     | 0-0-0     | DNP       | L, 31 svs     |
| 12/3 at MSU#       | 0-0-0     | DNP         | DNP INJ   | 0-0-0      | 0-1-1    | 0-0-0     | 0-1-1   | DNP           | 0-0-0           | 1-1-2*      | 0-0-0     | 0-0-0     | DNP       | DNP           |
| 12/4 vs. MSU#      | 0-0-0     | DNP         | DNP INJ   | 0-0-0      | 0-0-0    | 0-0-0     | 0-0-0   | DNP           | 0-0-0           | 1-0-1*      | 0-0-0     | 0-0-0     | DNP       | DNP           |
| 12/10 vs. UM#      | 0-0-0     | DNP         | DNP INJ   | 0-0-0      | 0-0-0    | 0-0-0     | 0-0-0   | DNP           | 0-0-0           | 0-0-0       | 0-0-0     | 0-0-0     | DNP       | DNP           |
| 12/11 at UM#       | 1-0-1     | 0-0-0       | DNP INJ   | 0-0-0      | 0-0-0    | 0-1-1     | 0-0-0   | DNP           | 0-0-0           | 0-1-1       | 1-0-1     | 0-0-0     | DNP       | DNP           |
| 12/28 vs. Maine%   | 0-0-0     | DNP         | DNP INJ   | 1-0-1*     | 0-0-0    | 0-1-1     | 0-0-0   | DNP           | 0-0-0           | 0-0-0       | 0-0-0     | 0-0-0     | DNP       | DNP           |
| 12/29 vs. BC%      | 0-0-0     | DNP         | DNP INJ   | 0-0-0      | 0-0-0    | 0-0-0     | 0-0-0   | DNP           | 0-0-0           | 0-1-1       | 0-0-0     | 0-0-0     | DNP       | DNP           |
| 1/7 vs. UW#        | 0-0-0     | DNP         | 0-0-0     | 0-0-0      | 0-0-0    | 0-0-0     | 0-0-0   | DNP           | 0-0-0           | 0-0-0       | 0-0-0     | 0-0-0     | DNP       | DNP           |
| 1/8 vs. UW#        | 1-0-1*    | 0-0-0       | 0-0-0     | 0-0-0      | 0-1-1    | 0-0-0     | 0-0-0   | 0-1-1         | 0-0-0           | DNP INJ     | 0-0-0     | 0-0-0     | DNP       | DNP           |
| 1/14 at UMD#       |           |             |           |            |          |           |         |               |                 |             |           |           |           |               |
| 1/15 at UMD#       |           |             |           |            |          |           |         |               |                 |             |           |           |           |               |
| 1/21 vs. DU#       |           |             |           |            |          |           |         |               |                 |             |           |           |           |               |
| 1/22 vs. DU#       |           |             |           |            |          |           |         |               |                 |             |           |           |           |               |
| 1/28 vs. SHU       |           |             |           |            |          |           |         |               |                 |             |           |           |           |               |
| 1/29 vs. SHU       |           |             |           |            |          |           |         |               |                 |             |           |           |           |               |
| 2/4 at UAA#        |           |             |           |            |          |           |         |               |                 |             |           |           |           |               |
| 2/5 at UAA#        |           |             |           |            |          |           |         |               |                 |             |           |           |           |               |
| 2/11 at CC#        |           |             |           |            |          |           |         |               |                 |             |           |           |           |               |
| 2/12 at CC#        |           |             |           |            |          |           |         |               |                 |             |           |           |           |               |
| 2/18 vs. MSU#      |           |             |           |            |          |           |         |               |                 |             |           |           |           |               |
| 2/25 at UM#        |           |             |           |            |          |           |         |               |                 |             |           |           |           |               |
| 2/26 at UM#        |           |             |           |            |          |           |         |               |                 |             |           |           |           |               |
| 3/4 vs. UND#       |           |             |           |            |          |           |         |               |                 |             |           |           |           |               |
| 3/5 vs. UND#       |           |             |           |            |          |           |         |               |                 |             |           |           |           |               |

Goal Designator: \* Power Play, ^ SHG, # GWG, % GTG, + ENG