



Home of the Huskies

St. Cloud State University

# HUSKY ATHLETICS

Athletic Media Relations - Football Update

Football Contact: Anne Abicht 320-308-2141 or aabicht@stcloudstate.edu

2010 SEASON GAME #12: NCAA Division II Football Playoffs Super Regional Three

Nov. 16, 2010



#15 St. Cloud State University (9-2)  
vs. #10 Hillsdale College (9-2)

Nov. 20, 2010, 12:00 p.m., Husky Stadium (4,198), St. Cloud, Minn.



## GAME #12 .....

- ✓ **NCAA Division II Playoffs First Round Super Regional Three**
- ✓ St. Cloud State's third NCAA Championship appearance
- ✓ St. Cloud State's third time hosting an NCAA Championship playoff game
- ✓ St. Cloud State is ranked #4 in the final NCAA Division II Super Regional 3 Poll
- ✓ Hillsdale College is ranked #5 in Super Regional 3
- ✓ Huskies are ranked #15 in this week's AFCA Division II Coaches Poll
- ✓ Hillsdale College is ranked #10 in the AFCA poll and
- ✓ St. Cloud State is 1-2 in NCAA playoff games
- ✓ Tickets are \$15 for adults; \$5 for youth ages 2-17 and SCSU students
- ✓ The first 400 SCSU students at the gate will gain free admittance courtesy of the Husky Football Gridiron Club and Husky Athletics. Tickets are on sale at the SCSU Athletic Ticket Office beginning at 11:00 a.m. Tuesday. Tickets will go on sale at Ticketmaster at 9:00 a.m. Wednesday.
- ✓ St. Cloud State is 9-2 overall. Huskies finished 9-1 in the NSIC, tied for 2nd
- ✓ Hillsdale College is 9-2 overall and a member of the Great Lakes Intercollegiate Conference (GLIAC)
- ✓ First ever meeting between the two teams
- ✓ To the winner; a second round match up at the University of Minnesota Duluth on Saturday, Nov. 27

### Husky Football Facts

Name of School: St. Cloud State University  
 City/Zip: St. Cloud, Minn. 56301  
 Founded: 1869  
 Enrollment: 18,319  
 Nickname: Huskies  
 School Colors: Cardinal and Black  
 Home Stadium: Husky Stadium (2004)  
 Capacity: 4,198  
 Surface: Synthetic (OmniGrass)  
 Affiliation: NCAA Division II  
 Conference: Northern Sun Intercollegiate Conference (NSIC)  
 President: Dr. Earl H. Potter  
 Director of Athletics: Dr. Morris Kurtz  
 NCAA Institutional Rep: Dr. Bill Hudson

### History

First Year of Football: 1920  
 All-Time Record: 390-349-23 (thru 2009)  
 NCAA Playoff Appearances: 1989, 2004  
 NCAA Playoff Record: 1-2  
 Last Appearance: 2004, NCAA First Round  
 20-17 double overtime loss to North Dakota

### Coaching Staff

Head Coach: Scott Underwood, Augustana College (3rd year/ 14-8 overall)  
 Co-Offensive Coordinators: Doug Patterson (OL) and Ian Shoemaker (QB)  
 Defensive Coordinator: Jim Louis  
 Defensive Line Coach: Steve Gruit  
 Running Backs: Byron Thomas (graduate assistant)  
 Tight Ends: Matt Vizthum (graduate assistant)  
 Outside Linebackers: Matt McLagan (graduate asst)  
 Inside Linebackers: Trey Dill (graduate assistant)  
 Wide Receivers: Nate Johnson (graduate assistant)  
 Offensive Line: Dave Hamlin (volunteer)

### Athletic Media Relations

AMR Director/Football Contact: Anne Abicht  
 AMR office phone: 320-308-2141  
 AMR fax: 320-308-2099  
 E-Mail Address: aabicht@stcloudstate.edu

### 2010 St. Cloud State Schedule/Results

| Date     | Opponent                                    | Site                    | Time/Result     |
|----------|---------------------------------------------|-------------------------|-----------------|
| Sept. 4  | at Augustana College                        | Sioux Falls, S.D.       | L, 23-32        |
| Sept. 11 | at Concordia-St. Paul*                      | St. Paul, Minn.         | W, 35-10        |
| Sept. 18 | <b>Winona State*</b>                        | <b>St. Cloud, Minn.</b> | <b>W, 31-26</b> |
| Sept. 25 | <b>University of Mary* (Family Weekend)</b> | <b>St. Cloud, Minn.</b> | <b>W, 30-14</b> |
| Oct. 2   | at Northern State*                          | Aberdeen, S.D.          | W, 42-10        |
| Oct. 9   | at Minnesota State University*              | Mankato, Minn.          | W, 31-17        |
| Oct. 16  | <b>Southwest Minnesota State*</b>           | <b>St. Cloud, Minn.</b> | <b>W, 24-6</b>  |
| Oct. 23  | <b>Minnesota, Crookston*</b>                | <b>St. Cloud, Minn.</b> | <b>W, 49-6</b>  |
|          | <b>Homecoming</b>                           |                         |                 |
| Oct. 30  | at Minnesota Duluth*                        | Duluth, Minn.           | L, 17-40        |
| Nov. 6   | <b>Bemidji State*</b>                       | <b>St. Cloud, Minn.</b> | <b>W, 35-14</b> |
| Nov. 13  | MSU Moorhead*                               | Moorhead, Minn.         | W, 42-16        |
|          | <b>*NSIC Game</b>                           |                         |                 |

[www.StCloudState.edu/athletics](http://www.StCloudState.edu/athletics)

**Follow the Huskies on the AIR/ONLINE:**

**Radio: KNSI 1450 AM** radio with John Hadden calling the game and Matt Wood with the color commentary. Pre-game show begins 30 minutes prior to kick-off. The broadcast can also be heard online at [www.1450knsi.com](http://www.1450knsi.com).

**KVSC 88.1 FM** will carry the game over the air and on the web. Dave Overlund and Justin Thomas will call the action. The online broadcast can be found at [www.kvsc.org](http://www.kvsc.org).

**Live Television Broadcast:** Saturday's game will be broadcast live on Charter Channel 21 by UTVS Productions. Jordan Weinand will call the action with Nick Lenz providing the color commentary. Chelsie Allen is the sideline reporter and Dee Dee Stiepan the in studio host.

**Live Stats:** <http://www.stcloudstate.edu/athletics/sports/livestats/sportsstats2/xlive.htm>

**Video Webcast:** <http://www.stcloudstate.edu/athletics/media/HuskyAthleticsVideoandAudio.asp>

**In the Polls:** The Huskies moved up three spots to #15 in this week's AFCA Division II Coaches poll. St. Cloud State is #18 in the D2football.com poll, moving up from the #22 spot a week ago.

**Super Regional Three Rankings/Pairings:**

The Huskies moved up one spot to #4 in the final NCAA Division II Super Regional Three ranking released on Sunday. The Super Three region includes teams from the NSIC, Great Lakes Intercollegiate Athletic Conference (GLIAC) and the Rocky Mountain Athletic Conference (RMAC). This Saturday's pairings are:

- #1. Minnesota Duluth, 11-0, bye
- #2. Augustana, 10-1, bye
- #3. Grand Valley State (10-2) hosts #6 Colorado School of Mines (9-2)
- #4. St. Cloud State (9-2) hosts #5 Hillsdale College (9-2)

**National Statistics Report:** In this week's NCAA Division II Football Statistical report, the Huskies are ranked third in the nation in turnover margin at 1.64. Among individual player rankings, senior redshirt first-year quarterback Phillip Klaphake (Princeton) is ranked fifth in passing efficiency with a 165.35 rating and 20th in total offense with 290.27 yards per game. Senior wide receiver Fred Williams (Milwaukee, Wis.) is eighth in receiving yards at 116.91 yards per game and tied for tenth in scoring with 9.27 points per game.

**7 Game Win Streak Ended:** The Huskies had a seven game win streak come to end on Oct. 30 in a 40-17 loss to Minnesota Duluth. The streak equalled the third longest in school history. The longest win streak in school history came during the North Central Conference (NCC) Championship season of 1989 when the Huskies rattled off nine straight wins and hosted the first and second round NCAA playoff games.

**Nine Win Season:** St. Cloud State won its ninth game of the season, a 42-16 road victory over MSU Moorhead last Saturday. The last time the Huskies had nine wins in a season was in 2002. The school record for wins is ten set during the 1989 season.

**Nine at Home:** St. Cloud State has won nine straight games at Husky Stadium dating back to Oct. 29, 2009. The Huskies won the last four home games of the 2009 season and have won five straight in 2010. St. Cloud State is 27-12 all-time in games played in Husky Stadium since it opened for the 2004 season. The Huskies are 13-2 at home since the start of the 2008 season. St. Cloud State is 0-1 in NCAA playoff games at Husky stadium losing to the University of North Dakota in the 2004 first round, 20-17 in two overtimes.

**Eight +400:** The Huskies gained 482 yards of total offense against MSU Moorhead, gaining 147 yards on the ground and 335 in the air, and went over the 400 mark for the eighth time this season. The most yards gained by the Huskies this season was 518 yards on Sept 11 at Concordia-St. Paul. That day the Huskies had 301 rushing yards and 217 passing.

**20 Picks in 2010:** The Husky defense has recorded 20 interceptions this season, the most since collecting 20 picks during the 2002 season. Senior safety Tyler Niedfeldt (Plymouth, Wis.) has a team high six picks that includes four in a single game against Minnesota, Crookston. Niedfeldt returned one of the four for a touchdown. The SCSU record for interceptions in a game is five held by Bill Trewick since the 1970 season.



**SCSU All-Time Record:** The 2010 season marks the 88th in the history of SCSU football. Since 1920, SCSU has compiled a 390-349-23 overall record and has won a total of 18 conference titles, two in the North Central Conference (1989, 2002), 14 Northern Intercollegiate Conference crowns and two Minnesota State College Conference titles.



**2010 NSIC STANDINGS**

| Overall               | NSIC Overall |      |
|-----------------------|--------------|------|
| Minnesota Duluth      | 10-0         | 11-0 |
| Augustana             | 9-1          | 10-1 |
| St. Cloud State       | 9-1          | 9-2  |
| Concordia, St. Paul   | 7-3          | 8-3  |
| Bemidji State         | 6-4          | 7-4  |
| Winona State          | 6-4          | 7-4  |
| Wayne State           | 5-5          | 6-5  |
| Minnesota State       | 5-5          | 6-5  |
| Southwest Minn. State | 3-7          | 4-7  |
| U-Mary                | 4-6          | 4-7  |
| MSU Moorhead          | 2-8          | 2-9  |
| Upper Iowa            | 2-8          | 2-9  |
| Northern State        | 2-8          | 2-9  |
| Minnesota, Crookston  | 0-10         | 1-10 |

**North Division**

|                      |     |      |
|----------------------|-----|------|
| Minnesota Duluth     | 6-0 | 11-0 |
| St. Cloud State      | 5-1 | 9-2  |
| Bemidji State        | 4-2 | 7-4  |
| U-Mary               | 3-3 | 4-7  |
| Northern State       | 2-4 | 2-9  |
| MSU Moorhead         | 1-5 | 2-9  |
| Minnesota, Crookston | 0-6 | 1-10 |

**South Division**

|                       |     |      |
|-----------------------|-----|------|
| Augustana             | 5-1 | 10-1 |
| Winona State          | 5-1 | 7-4  |
| Concordia, St. Paul   | 4-2 | 8-3  |
| Minnesota State       | 3-3 | 6-5  |
| Wayne State           | 2-4 | 6-5  |
| Southwest Minn. State | 1-5 | 4-7  |
| Upper Iowa            | 1-5 | 2-9  |

**Kubes Returns INT for Six:** Junior safety Tony Kubes (New Prague) returned an interception 65 yards for a touchdown against MSU Moorhead. The INT was the third of his career and second for a touchdown. Kubes leads the Huskies in tackles with 71 including a team high 45 solo stops. He has recovered a team high four fumbles this season that included a fumble return for a touchdown.



**Klaphake Sets Single Season Mark for Total Offense:** Redshirt first-year quarterback Phillip Klaphake (Princeton) threw for a season high 335 yards and tied his personal record of four touchdown passes in the win over MSU Moorhead. His performance helped establish a season record for total offense by an individual. This year he has rushed and passed for 3,193 yards breaking the old mark of 3,189 yards held by Keith Heckendorf and set during the 2003 season. Klaphake is the Huskies leading rusher with 703 yards and nine touchdowns. He has 2,490 yards passing and 23 touchdown passes. He is the first Husky since the 2004 season to go over 2,000 yards passing in a single season, and the seventh Husky QB in school history to reach the mark in a single season. Dan Kaczor was the last Husky to reach the milestone with 2,403 yards passing during the 2004 season. Klaphake has started all 11 games this season. Nine times this season, he has thrown for over 200 yards in a game and four times has gone over 300. He threw back to back 300's to start his collegiate career. Three times he has thrown four TD passes in a game. In his collegiate debut on Sept. 4 at Augustana College he threw for 319 yards and following week 301 to become the first Husky to throw back to back games of 300 yards since Keith Heckendorf during the 2003 season. He is the first Husky QB since Mike Hammerseng ( 302 yards Nov. 11, 2006 at Minnesota Duluth) to throw for over 300 yards in a game. His four touchdown passes in a game is one short of the single game school record for TD passes held by Heckendorf, Dan Kaczor and Mike Leivermann.



**Walker Gains Season High:** True freshman runningback Mike Walker (Walworth, Wis.) rushed for a season and career high 87 yards and a touchdown on eight carries against MSU Moorhead. In four games, Walker has gained 179 yards and scored three touchdowns.



**Aldridge Boots a Record:** Sophomore place-kicker/punter Tyler Aldridge (Woodbury) went six for six in PAT attempts against MSUM, and set a new record for Most PAT's in a single season with 47. He surpassed the old mark of 46 set by Shawn Braunagel during the 2004 season. Aldridge has made 47 of 48 PAT's including 46 straight PAT's since having his second attempt of the season blocked at Augustana College on Sept. 4. He ranks second on the team in scoring with 71 points. He has made 50 of 51 PAT attempts in his career. Aldridge has made eight of 11 field goal attempts and averages 37.8 yards per punt with a long of 63. In his career, he is 15 of 21 in field goal attempts. He kicked a season and career long 42-yard field goal against Minnesota Duluth on Oct. 30.



Husky Stadium

2009 marked the sixth season of Husky Stadium. St. Cloud State is 22-11 at Husky Stadium since the 2004 season. The Huskies posted a 4-2 record at Husky Stadium in 2004, including a 0-1 mark in an NCAA playoff game in the new facility. The Huskies averaged 3,772 fans in the 4,198 seat facility in 2004, 3,961 in 2005, 3,936 in 2006, 2,742 in 2007, 4,004 in 2008, and 4,112 in 2009. SCSU's first sell-out was on October 2, 2004 against the University of North Dakota.

**Football Record at Husky Stadium**

- 2004 Record: 4-2
- 2005 Record: 5-1
- 2006 Record: 3-3
- 2007 Record: 2-4
- 2008 Record: 4-1
- 2009 Record: 4-1
- 2010 Record: 5-0

**St. Cloud State Players of the Week**

**Opponent**

- vs. Augustana
- vs. Conc. St. Paul
- vs. Winona
- vs. Mary
- vs. Northern
- vs. Minnesota State
- vs. Southwest MN
- vs. UMC
- vs. UMD
- vs. Bemidji
- vs. MSU Moorhead

**Offensive**

- Fred Williams-WR
- Dante Steward-RB
- Nick Angellotti & Chad Peterson
- Damon Treat-RB
- Fred Williams-WR
- Corey Henne-TE
- Phillip Klaphake-QB
- Ben Larson-RG
- Scott Horvath-OC
- Damon Treat-RB
- Fred Williams-WR

**Defensive**

- Joe Everson-FC
- Joel Godfredsen-DL
- Quamarr Tolbert
- Thomas Johnson-LB
- Tony Kubes-DB
- Joe Winandy-DE
- Josh Popanda-NG
- Tyler Neidfeldt-FS
- Marvin Matthews-BC
- Mark Martin-LB
- Mark Martin & Tony Kubes

**Special Teams**

- Eli Shoemaker
- Tyler Aldridge-PK/P
- Joel Godfredsen
- Chad Peterson
- Cody Kave
- Matt Schwartz
- Tyler Aldridge
- Rashad West
- Cody Kave
- Rashad West

**Offensive Scout**

- Mike Walker
- Taylor Berger
- Tony Schmitz & Matt Leis
- Jerahvenee Jones
- Taylor Berger
- Matt Schmiesing
- Mike Westrich
- Jeremy Greeley
- Kyle Galik
- Dillon Carlson

**Defensive Scout**

- Todd Bestgen
- Luke Sebald
- Josh Sanks
- Garrett Bender
- Bo Putrah
- Jared Cross
- Luke Sebald
- Jarek Kunz
- Matt Boerner
- Brent Orndorff



TM

**2010 Husky Seniors: #90 Joe Winandy, #78 Scott Ferguson, #71 Titus Cole, #70 Greg Dingmann, #58 Josh Popanda, #54 Doug Asquith, #47 Justin MacPherson, #30 Dante Steward, #20 Tyler Niedfeldt, #8 Fred Williams**

**Williams Tops the Charts:** Senior wide receiver

Fred Williams (Milwaukee, Wis.) set the single season record for receptions with his performance against MSU Moorhead. Williams caught 12 passes for 183 yards and three touchdowns. He has 76



receptions this season and broke the old mark of 73 held by Mike McKinney (1997) and Ryan Koch (2005). He has 1,286 yards receiving this season and is the third Husky to reach 1,000 in a single season. Williams is the all-time leading receiver in receptions with 245 and this season became the first Husky to reach 3,000 receiving yards and has 3,474 in his career. On Sept. 4, against Augustana College, he set the single game record for receiving yards with 236. Three times in his career, Williams has tied the single game record for touchdown receptions with four in a game, including twice this season. He has 38 career touchdown receptions and trails Ben Nelson's record of 43 career TD receptions. In addition, he has caught a pass in 42 straight games.

**All-Time Receiving Yards**

- |                                 |       |
|---------------------------------|-------|
| 1. Fred Williams (2007-current) | 3,474 |
| 2. John Kimbrough (1973-76)     | 2,878 |
| 3. Mike McKinney (1995-98)      | 2,757 |
| 4. Ryan Koch (2002-05)          | 2,706 |
| 5. Ben Nelson (1999-02)         | 2,581 |

**Record Setters:** Here is a list of records set this year by individual players.

- Receptions in a season: 76 by Fred Williams
- Receptions in a career: 245 by Fred Williams
- Receiving yards - game: 236, Fred Williams
- Receiving yards - season: 1,286 Fred Williams
- Receiving yards - career: 3,474 Fred Williams

Total Offense - most yards gained -season: 3,193 Phillip Klaphake

Most PAT's - season: 47, Tyler Aldridge

**Chart Climbers:** Several Huskies are climbing the career charts this season. Following is the category, the player, and where he ranks on the all-time chart.

**All-Purpose Yardage**

- |                  |       |
|------------------|-------|
| 6. Fred Williams | 5,066 |
|------------------|-------|

**Scoring**

- |                  |     |
|------------------|-----|
| 3. Fred Williams | 240 |
|------------------|-----|

**Interceptions**

- |                      |    |
|----------------------|----|
| T-9. Tyler Niedfeldt | 11 |
|----------------------|----|

**Fumble Recoveries**

- |                 |   |
|-----------------|---|
| T-5. Tony Kubes | 6 |
|-----------------|---|

**Tackles for Loss**

- |                 |      |
|-----------------|------|
| 9. Josh Popanda | 26.5 |
|-----------------|------|

**All-Time Receptions**

- |                                 |     |
|---------------------------------|-----|
| 1. Fred Williams (2007-current) | 245 |
| 2. Mike McKinney (1995-98)      | 202 |
| 3. Ryan Koch (2002-05)          | 192 |
| 4. Ben Nelson (1999-02)         | 164 |
| 5. John Kimbrough (1973-76)     | 156 |

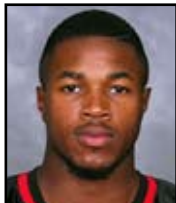
**TEAM COMPARISONS**

| TEAM (RECORD)            | SCSU (9-2)  | Hillsdale College (9-2) |
|--------------------------|-------------|-------------------------|
| Scoring/Game             | 32.6        | 31.4                    |
| First Downs              | 222         | 264                     |
| Rush Yards/Game          | 202.1       | 159.9                   |
| Pass Yards/Game          | 230.5       | 262.8                   |
| Att-Comp-Int             | 292-186-8   | 327-250-6               |
| Total Offense/Game       | 432.5       | 422.7                   |
| Penalties-Yards          | 64-621      | 31-293                  |
| Time of Possession/Game  | 30:41       | 29:04                   |
| 3rd Down Conversions     | 59 of 142   | 74 of 134               |
| 4th Down Conversions     | 6 of 18     | 9 of 14                 |
| <b>Quarterly Scoring</b> | <b>SCSU</b> | <b>HC</b>               |
| 1st                      | 128         | 55                      |
| 2nd                      | 122         | 129                     |
| 3rd                      | 79          | 83                      |
| 4th                      | 30          | 78                      |

**2010 Team Captains:**



**Josh Popanda**



**Fred Williams**



**Matt Theis**



**Tyler Niedfeldt**

**Huskies vs. MSU Moorhead Recap:**

Moorhead, Minn. – St. Cloud State redshirt first-year quarterback Phillip Klaphake (Princeton) threw for a season high 335 yards and four touchdowns and senior wide receiver Fred Williams ( Milwaukee, Wis.) caught 12 passes for 183 yards and three touchdowns to lead the no. 18 Huskies to a 42-16 Northern Sun Intercollegiate Conference (NSIC) win over MSU Moorhead Saturday afternoon in Moorhead.

The Huskies gained 482 yards of total offense marking the eighth game this season where the Huskies gained over 400 yards. The Husky defense came up with four interceptions and four quarterback sacks. Sophomore Marvin Matthews (Roseville) and junior safety Tony Kubers (New Prague) had eight tackles each. Kubers notched his second interception of the season as did Jack Moro (Brookfield, Wis.). Rashad West (Woodbury) and Wade Williams (Waupan, Wis.) each had one interception.

St. Cloud State and MSU Moorhead exchanged scoring possessions in the first quarter as both teams scored on their first two possessions. Husky quarterback Phillip Klaphake found wide receiver Fred Williams in the end zone twice in the first quarter on plays of 52 and six yards, and the Dragons scored on a 24-yard Wes Kramer field goal and a 25-yard pass play from QB Kevin Koch to Nick Scharpf, and the Huskies led 14-9 at the end of the first quarter.

Klaphake found Williams for their third touchdown reception of the game, a 27-yard play that put the Huskies up 21-9 at 12:22 of the second quarter. The Huskies would score again before the end of the half when Klaphake hit redshirt first-year tight end Corey Henne (Brookfield, Wis.) on a one-yard play and the Huskies went into half-time with a 28-9 lead.

Junior safety Tony Kubers put six on the scoreboard in the third quarter with a 65-yard interception return for a touchdown at the 7:40 mark and the Husky lead increased to 35-9. The interception was the third of his career and second returned for a touchdown. The Dragons added seven points on a 52-yard punt return by Kendall Henden and the Husky lead was 19, 35-16 at the 4:08 mark. First year running back Mike Walker (Walworth, Wis.) scored on a three-yard run and the Huskies led 42-16 with 2:06 left in the third.

**2010 Media Coverage of Husky Football**

**Radio**

Husky football can be heard all season long on 1450 AM KNSI Radio. John Hadden will call the play-by-play. The Husky Football pre-game show begins 30 minutes prior to kick-off.

KVSC 88.1 FM carries all Husky home football games.

**Live Audio**

Live streaming audio of the KNSI broadcast can be heard on the web at [www.1450knsi.com](http://www.1450knsi.com)

The KVSC broadcast can be found at [www.kvsc.org](http://www.kvsc.org)

**Live Stats**

Live game stats of all Husky home football games can be found at

<http://www.stcloudstate.edu/athletics/sports/livestats/sportsstats2/xlive.htm>

**Video**

Live video streaming of all Husky home football games can be found at

<http://www.stcloudstate.edu/athletics/media/HuskyAthleticsVideoandAudio.asp>

**Newspaper**

St. Cloud Times sports reporter Andy Rennecke follows Husky football. To read the latest go to:

<http://www.sctimes.com/>

**Television**

UTVS Productions will broadcast Husky home football games live on Charter Channel 21. Jordan Weinand will handle the play-by-play and Nick Lenz the commentary. The sideline reporter is Chelsie Allen and the in studio host is Dee Dee Stiepan.

**Scott Underwood Show**

Listen live to the Scott Underwood Show every Wednesday evening throughout the 2010 Husky football season.

Head Coach Scott Underwood and John Hadden will breakdown Husky football from 6:00 to 7:00 p.m. at the Ground Round Restaurant in St. Cloud. You can catch the show live in person at Ground Round or listen in at 1450 AM KNSI Radio.

**Northern Sun Intercollegiate Conference**

For league scores and information go to <http://www.northernsun.org>

**Series Record:** This will be the first meeting between the Hillsdale College Chargers and the Huskies. The Chargers are the first Great Lakes Intercollegiate Conference (GLIAC) members the Huskies have played since the 2002 season when the Huskies opened against Northern Michigan, a 45-17 victory.

**In the NCAA Playoffs:** St. Cloud State is 1-2 in NCAA playoff games. The Huskies hosted Augustana College (W, 27-20) in the 1989 first round playoffs and Mississippi College (L, 55-24) in the 1989 quarterfinals. Mississippi College went on to win the national title that year. In 2004, the Huskies hosted the University of North Dakota in the first round and lost 20-17 in double overtime. Hillsdale College is 1-1 in NCAA playoff games. The Chargers defeated Minnesota State University, Mankato 27-24 in the 2009 first round play and then fell to Grand Valley State, 44-27.

**About Hillsdale College:** The Chargers are 9-2 overall and posted an 8-2 record in the GLIAC South Division. The Chargers tied for first in the division with Wayne State (Mich.). Grand Valley State University won the North Division of the GLIAC race with a 9-1 record. The only losses on the Hillsdale schedule this season were at Grand Valley State, 44-41 on Sept. 11 and at Wayne State, 14-9 on Oct. 23.

This is Hillsdale's second straight NCAA playoff appearance and second in the history of the program. Last season, the Chargers traveled to Mankato, Minn., for a first round game against Minnesota State University. The Chargers won that game, 27-24. The Chargers and Huskies were the two teams to post victories over the Mavericks in 2009. The Huskies beat MSU 26-21 in the regular season finale. The Mavericks were undefeated and nationally ranked at the time.

Senior quarterback Troy Weatherhead leads the nation in passing efficiency with a 173.97 mark. He set new school and GLIAC records for completion percentage in a season. He also holds school records for career touchdown passes (63), career passing yards (9,144) and career completions (795). This season he has completed 242 of 311 pass attempts for 2,815 yards and 22 touchdowns.

The main receiver for the Chargers has been

senior Andre Holmes. Holmes has caught 88 passes for 1,160 yards and nine touchdowns. He holds four school records including single season receptions (88), receiving yards (1,160), career receptions (203) and career receiving yards (2,910).

On the ground, Hillsdale is led by sophomore Joe Glendening. Glendening has carried the ball 312 times for 1,485 yards and 15 touchdowns.

Defensively, junior Nick Hixson leads the team with 81 tackles including a team high 48 solo stops. He also has three interceptions this season.

David Bakker, a junior defensive end leads the team with 8.5 tackles for loss and 4.0 quarterback sacks.

**Head Coach:** Hillsdale College head coach Keith Otterbein is in his ninth season with the Chargers. In 2009, Otterbein won his 100th career game and guided the Chargers to a 10-3 record and its first-ever NCAA Division II playoff appearance. He was named the 2009 GLIAC Coach of the Year and Super Region 3 Coach of the Year. Otterbein played for the Chargers from 1975-78. His coaching stops included Central Michigan University, Ferris State University and Ball State University.

**2010 Hillsdale Schedule/Results:**

|        |                          |   |       |
|--------|--------------------------|---|-------|
| 9/3    | FERRIS STATE             | W | 35-17 |
| *9/11  | at #1 Grand Valley State | L | 41-44 |
| *9/18  | at Ashland University    | W | 27-17 |
| *9/25  | LAKE ERIE COLLEGE        | W | 42-37 |
| *10/2  | SAGINAW VALLEY STATE     | W | 35-21 |
| *10/9  | at Ohio Dominican        | W | 35-10 |
| *10/16 | MICHIGAN TECH            | W | 24-17 |
| *10/23 | at Wayne State           | L | 9-14  |
| *10/30 | at Northwood             | W | 5-28  |
| *11/6  | FINDLAY                  | W | 31-3  |
| *11/3  | TIFFIN                   | W | 31-24 |
|        | *GLIAC Game              |   |       |



**Hillsdale College Quick Facts**

Location: Hillsdale, Mich.  
 Founded: 1844  
 Enrollment: 1,350  
 Nickname: Chargers  
 Colors: Royal Blue & White  
 Home Field: Muddy Waters Field  
 Conference: GLIAC  
 President: Dr. Larry Arn  
 Athletic Director: Don Brubacher

Head Coach: Keith Otterbein  
 Alma Mater/Year: Hillsdale/1979  
 Record at School: 50-42, 8 years  
 Career Record: 116-83-3, 17 years

Sports Information Director: Brad Monastiere  
 Office Phone: 517-607-3172  
 Email: brad.monastiere@hillsdale.edu  
 Website: www.hillsdale.edu/athletics

**SCSU vs. Hillsdale College Series Record: First Meeting**

**NSIC Preseason Coaches Poll:**

1. Minnesota Duluth (13) 169
2. Minnesota State (1) 157
3. Augustana 125
- St. Cloud State 125
5. Bemidji State 122
6. Wayne State 116
7. Winona State 114
8. University of Mary 74
9. Southwest Minn. State 73
10. Concordia-St. Paul 72
11. Northern State 45
12. Upper Iowa 41
13. MSU Moorhead 26
14. Minnesota, Crookston 15

**NSIC North Division Preseason Poll:**

1. Minnesota Duluth (6) 36
2. St. Cloud State 29
3. Bemidji State (1) 28
4. University of Mary 20
5. Northern State 17
6. MSU Moorhead 11
7. Minnesota, Crookston 6

**NSIC South Division Preseason Poll:**

1. Minnesota State (6) 36
2. Augustana (1) 27
3. Winona State 26
4. Wayne State 24
5. Southwest Minnesota State 14
6. Concordia-St. Paul 13
7. Upper Iowa 6



# Husky Football Depth Chart

| St. Cloud Offensive Two-Deep |    |                                                     | St. Cloud Defensive Two-Deep |    |                                                      |
|------------------------------|----|-----------------------------------------------------|------------------------------|----|------------------------------------------------------|
| WR-Z                         | 8  | Fred Williams, 6-0, 195, Sr., Milwaukee, Wis.       | STUD                         | 96 | Adam Shaffer, 6-2, 245, Jr., Dubuque, Iowa           |
|                              | 17 | Eli Shoemaker, 5-11, 186, RFY, Graham, Wash.        |                              | 91 | Matt Schwartz, 6-2, 250, Jr., Forest Lake, Minn.     |
| WR-X                         | 80 | Tyler Allery, 6-1, 197, So., Lakeville, Minn.       | DT                           | 71 | Titus Cole, 6-2, 285, Sr., Glendale, Wis.            |
|                              | 1  | Renard Robinson, 6-1, 210, RFY, Bloomington, Minn.  |                              | 92 | Chris Rupe, 6-1, 256, So., Batavia, Iowa             |
| WR-B                         | 17 | Eli Shoemaker, 5-11, 186, RFY, Graham, Wash.        | NG                           | 58 | Josh Popanda, 6-2, 277, Sr., Twin Lakes, Wis.        |
|                              | 4  | Ernest Dorsett, 5-9, 166, RFY, Woodbury, Minn.      |                              | 92 | Chris Rupe, 6-1, 256, So., Batavia, Iowa             |
| LT                           | 78 | Scott Ferguson, 6-6, 360, Sr., Bowmanville, Ontario | End                          | 95 | Joel Godfredsen, 6-1, 273, Jr., Armstrong, Iowa      |
|                              | 75 | Andrew Anderson, 6-7, 302, So., Crookston, Minn.    |                              | 90 | Joe Winandy, 6-4, 286, Sr., Mazomanie, Wis.          |
| LG                           | 79 | Andrew Beckmann, 6-3, 295, So., Waseca, Minn.       | Zombie                       | 19 | Brad Wignes, 5-10, 195, So., Marseilles, Ill.        |
|                              | 69 | Kyle Galik, 6-2, 276, RFY, Oconto, Wis.             |                              | 47 | Justin MacPherson, 6-1, 215, Sr., Menasha, Minn.     |
| C                            | 68 | Scott Horvath, 6-1, 283, Jr., Eagan, Minn.          | WILL                         | 7  | Mark Martin, 6-0, 250, Jr., Milwaukee, Wis.          |
|                              | 79 | Andrew Beckmann, 6-3, 295, So., Waseca, Minn.       |                              | 44 | Cody Kave, 5-11, 215, Jr., Waukesha, Wis.            |
| RG                           | 77 | Ben Larson, 6-2, 275, Jr., Eagan, Minn.             | MIKE                         | 40 | Thomas Gruis, 5-11, 218, Jr., Clear Lake, Iowa       |
|                              | 72 | Matt Harrington, 6-4, 327, Jr., Plymouth, Wis.      |                              | 55 | Thomas Johnson, 5-11, 203, So., Little Canada, Minn. |
| RT                           | 76 | Matt Theis, 6-7, 309, Jr., Eden Valley, Minn.       | FC                           | 24 | Joe Everson, 5-10, 177, Jr., Lakeville, Minn.        |
|                              | 70 | Greg Dingmann, 6-4, 298, Sr., Albany, Minn.         |                              | 36 | Eric Poggenburg, 5-9, 170, FY, Cedarburg, Wis.       |
| TE                           | 86 | Nick Angellotti, 6-4, 230, Jr., Wauconda, Ill.      | FS                           | 20 | Tyler Niedfeldt, 6-2, 210, Sr., Plymouth, Wis.       |
|                              | 89 | Seth Noreen, 6-6, 240, Jr., Avon, Minn.             |                              | 28 | Jack Moro, 5-10, 183, RFY, Brookfield, Wis.          |
| RB                           | 3  | Damon Treat, 5-7, 150, FY, Fairfield, Calif.        | BS                           | 33 | Tony Kubes, 6-0, 203, Jr., New Prague, Minn.         |
|                              | 46 | Mike Walker, 5-10, 200, FY, Walworth, Wis.          |                              | 21 | Wade Williams, 6-0, 187, So., Waupan, Wis.           |
| QB                           | 16 | Phillip Klaphake, 6-1, 188, RFY, Princeton, Minn.   | BC                           | 32 | Marvin Matthews, 6-0, 197, So., Roseville, Minn.     |
|                              | 18 | Brad Meade, 6-2, 198, So., Chippewa Falls, Wis.     |                              | 14 | Theo Giple, 5-8, 175, RFY, St. Michael, Minn.        |

## Specialists / Returners

Place Kicker 10 Tyler Aldridge, 6-1, 187, So., Woodbury, Minn.  
28 Jack Moro, 5-10, 183, RFY, Brookfield, Wis.

Punt 10 Tyler Aldridge, 6-1, 187, So., Woodbury, Minn.  
99 Matt Compton, 5-10, 176, Jr., Owatonna, Minn.

Holder 33 Tony Kubes, 6-0, 195, So., New Prague, Minn.

Long Snap 89 Seth Noreen, 6-6, 240, Jr., Avon, Minn.  
Short Snap 92 Chris Rupe, 6-1, 256, So., Batavia, Iowa

Punt Ret. 8 Fred Williams, 6-0, 195, Sr., Milwaukee, Wis.  
Kick Ret. 8 Fred Williams, 6-0, 195, Sr., Milwaukee, Wis.  
4 Ernest Dorsett, 5-9, 166, RFY, Woodbury, Minn.  
3 Damon Treat, 5-7, 150, FY, Fairfield, Calif.



**Scott Underwood** (Augustana College, 1988) was introduced as Head Coach of Husky Football on March 25, 2008. He is the 12th head football coach in the history of Husky football and had been the Huskies defensive coordinator since 2001.

In 2008, his first season at the helm, Underwood guided the Huskies to a 7-4 overall record, fourth place in the NSIC with a 7-3 mark and second place in the NSIC North Division with a 5-1 record. The Huskies had a senior class of 25 players and the seven wins marked the most victories for the Huskies since winning eight games in 2005.

The 2009 season was almost identical to 2008. The Huskies were 7-4 overall, tied for third overall in the NSIC with a 7-3 record, and placed second in the NSIC North with a 5-1 mark. The Huskies played a non-conference game at the University of Maine and nearly defeated the Division I Black Bears, losing 34-27 in overtime.

The Husky defense, led by Underwood ranked among the best in the North Central Conference in the last seven seasons of the league. In 2002, SCSU led the NCC in rushing defense, giving up 77.1 yards per game. Ten defensive players have earned All-North Central Conference first team honors with Underwood, including Charlie Cosgrove, the 2005 Defensive Lineman of the Year. The Huskies were co-winners of the NCC title in 2002 and hosted a first round NCAA Division II playoff game in 2004, the year that Husky Stadium opener.

Success has followed Underwood at each of his coaching stops. Prior to joining the St. Cloud State staff in 2001, Underwood was the inside linebackers coach at the University of North Dakota for four seasons, and coached two NCAA playoff teams. From 1993 to 1996, he served as the defensive coordinator at the University of Sioux Falls. The University of Sioux Falls advanced to the playoffs during three of those seasons and won the NAIA Division II National Championship in 1996.

Underwood began his coaching career at his alma mater, Augustana College, where he spent five seasons as the defensive secondary coach, following a four-year career at defensive back for the Vikings from 1984 to 1988. In 1988, Underwood coached in an NCAA playoff game. In 1989, with Underwood as an assistant coach, the Vikings advanced to the NCAA playoffs, losing to St. Cloud State at Selke Field.

A native of Marion, Iowa, Underwood has a bachelor's degree in social sciences from Augustana College and a master's degree in health, physical education, and recreation from the University of South Dakota.

**The Scott Underwood File**

| <b>Year</b>   | <b>School</b>    | <b>Overall</b> | <b>NSIC</b> | <b>NSIC North</b> |
|---------------|------------------|----------------|-------------|-------------------|
| 2008          | St. Cloud State  | 7-4            | 7-3 (4th)   | 5-1 (2nd)         |
| 2009          | St. Cloud State  | 7-4            | 7-3 (3rd)   | 5-1 (2nd)         |
| 2010          | St. Cloud State  | 9-2            | 9-1 (T-2nd) | 5-1 (2nd)         |
| <b>Totals</b> | <b>2 + years</b> | <b>23-10</b>   | <b>22-7</b> | <b>15-3</b>       |



**Ian Shoemaker**  
Co-Offensive  
Coordinator



**Doug Patterson**  
Co-Offensive  
Coordinator



**Jim Louis**  
Defensive  
Coordinator



**Steve Gruit**  
Defensive Line  
Coach



| NO | NAME                | POS | HT   | WT  | YR  | HOMETOWN (PREVIOUS SCHOOL)                        | *Team Captains |
|----|---------------------|-----|------|-----|-----|---------------------------------------------------|----------------|
| 1  | Renard Robinson     | WR  | 6-1  | 210 | RFY | Bloomington, Minn. (Richfield H.S.)               |                |
| 2  | Brandon Geiss       | RB  | 5-7  | 183 | So. | Shorewood, Ill. (Joliet Catholic H.S.)            |                |
| 3  | Damon Treat         | RB  | 5-7  | 150 | FY  | Fairfield, Calif. (Vanden H.S.)                   |                |
| 4  | Ernest Dorsett III  | WR  | 5-9  | 166 | RFY | Woodbury, Minn. (Woodbury H.S.)                   |                |
| 5  | Tate Christopherson | QB  | 5-11 | 200 | RFY | Maple Grove, Minn. (Osseo H.S.)                   |                |
| 6  | Chad Peterson       | RB  | 5-9  | 167 | RFY | Winona, Minn. (Winona H.S.)                       |                |
| 7  | Mark Martin         | LB  | 6-0  | 250 | Jr. | Milwaukee, Wis. (Illinois State University)       |                |
| 8  | Fred Williams*      | WR  | 6-0  | 195 | Sr. | Milwaukee, Wis. (South Division H.S.)             |                |
| 9  | Rob Evans           | WR  | 6-0  | 179 | Jr. | Franklin, Wis. (Concordia, St. Paul)              |                |
| 10 | Tyler Aldridge      | P/K | 6-1  | 187 | So. | Woodbury, Minn. (Woodbury H.S.)                   |                |
| 11 | Andrew Maskell      | QB  | 6-1  | 213 | So. | Spearfish, S.D. (Central Lakes College)           |                |
| 12 | Taylor Berger       | QB  | 6-1  | 176 | FY  | Anoka, Minn. (Elk River H.S.)                     |                |
| 13 | Timmy Hill          | RB  | 5-7  | 162 | FY  | Loves Park, Ill. (Rockford Guilford H.S.)         |                |
| 14 | Theo Giple          | DB  | 5-8  | 175 | RFY | St. Michael, Minn. (St. Michael-Albertville H.S.) |                |
| 15 | Brent Orndorf       | DB  | 5-9  | 177 | FY  | Sartell, Minn. (Sartell-St. Stephen H.S.)         |                |
| 16 | Phillip Klaphake    | QB  | 6-1  | 188 | RFY | Princeton, Minn. (Princeton H.S.)                 |                |
| 17 | Eli Shoemaker       | WR  | 5-11 | 186 | RFY | Graham, Wash. (Graham-Kapowsin H.S.)              |                |
| 18 | Brad Meade          | QB  | 6-2  | 198 | So. | Chippewa Falls, Wis. (Chippewa Falls H.S.)        |                |
| 19 | Brad Wignes         | DB  | 5-10 | 195 | So. | Marseilles, Ill. (Ottawa Township H.S.)           |                |
| 20 | Tyler Niedfeldt     | DB  | 6-2  | 210 | Sr. | Plymouth, Wis. (Plymouth H.S.)                    |                |
| 21 | Wade Williams       | DB  | 6-0  | 187 | So. | Waupan, Wis. (Waupan H.S.)                        |                |
| 22 | Miky Woods          | DB  | 5-10 | 193 | RFY | Brooklyn Park, Minn. (Champlin Park H.S.)         |                |
| 23 | Josh Sanks          | DB  | 5-10 | 150 | FY  | St. Augustine, Fla. (St. Augustine H.S.)          |                |
| 24 | Joe Everson         | DB  | 5-10 | 177 | Jr. | Lakeville, Minn. (Lakeville South H.S.)           |                |
| 25 | Rashad West         | DB  | 5-9  | 155 | RFY | Woodbury, Minn. (Woodbury H.S.)                   |                |
| 26 | Jarek Kunz          | DB  | 6-1  | 174 | FY  | Lake Geneva, Wis. (Badger H.S.)                   |                |
| 27 | Louis Kranovich     | DB  | 6-0  | 185 | FY  | Bettendorf, Iowa (Bettendorf H.S.)                |                |
| 28 | Jack Moro           | DB  | 5-10 | 183 | RFY | Brookfield, Wis. (Central H.S.)                   |                |
| 29 | Lovell Gunn         | RB  | 5-7  | 170 | So. | Palmdale, Calif. (Texas Southern)                 |                |
| 30 | Dante Steward       | RB  | 5-7  | 246 | Sr. | Milwaukee, Wis. (Minnesota State University)      |                |
| 31 | Andy Folz           | RB  | 5-11 | 203 | Jr. | Spring Grove, Minn. (Spring Grove H.S.)           |                |
| 32 | Marvin Matthews     | DB  | 6-0  | 197 | So. | Roseville, Minn. (Roseville Area H.S.)            |                |
| 33 | Tony Kubes          | DB  | 6-0  | 203 | Jr. | New Prague, Minn. (New Prague H.S.)               |                |
| 34 | Dan Blaser          | WR  | 5-7  | 170 | RFY | Stacy, Minn. (Forest Lake H.S.)                   |                |
| 36 | Eric Poggenburg     | DB  | 5-9  | 170 | FY  | Cedarburg, Wis. (Cedarburg H.S.)                  |                |
| 37 | Kyle Risinger       | DB  | 6-0  | 190 | RFY | Excelsior, Minn. (Minnesota, Crookston)           |                |
| 38 | Wynn Pratt          | DB  | 5-11 | 182 | FY  | Andover, Minn. (Andover H.S.)                     |                |
| 40 | Thomas Gruis        | LB  | 5-11 | 218 | Jr. | Clear Lake, Iowa (Clear Lake H.S.)                |                |
| 41 | Alphonso Scott      | DB  | 5-8  | 167 | FY  | Ballwin, Mo. (Parkway South H.S.)                 |                |
| 42 | Brad Beeskow        | RB  | 5-10 | 170 | FY  | Andover, Minn. (Andover H.S.)                     |                |
| 43 | Eric Johnson        | LB  | 6-1  | 225 | RFY | Sauk Rapids, Minn. (Sauk Rapids Rice H.S.)        |                |
| 44 | Cody Kave           | LB  | 5-11 | 215 | Jr. | Waukesha, Wis. (Indianapolis University)          |                |
| 45 | Chris Key           | LB  | 6-0  | 209 | Jr. | Libertyville, Ill. (Libertyville H.S.)            |                |
| 46 | Mike Walker         | RB  | 5-10 | 200 | FY  | Walworth, Wis. (Bigfoot H.S.)                     |                |
| 47 | Justin MacPherson   | LB  | 6-1  | 215 | Sr. | Menasha, Minn. (Park Rapids H.S.)                 |                |
| 48 | Todd Bestgen        | LB  | 5-11 | 209 | RFY | Rochester, Minn. (Lourdes H.S.)                   |                |
| 49 | Bo Putrah           | LB  | 6-2  | 215 | FY  | Faribault, Minn. (Faribault H.S.)                 |                |
| 50 | Matt Boerner        | LB  | 6-0  | 197 | FY  | Hartland, Wis. (Arrowhead H.S.)                   |                |
| 51 | Quamarr Tolbert     | DL  | 6-1  | 260 | RFY | St. Paul, Minn. (Johnson H.S.)                    |                |
| 52 | Garrett Bender      | LB  | 6-3  | 214 | FY  | Minneapolis, Minn. (Washburn H.S.)                |                |
| 53 | Chris Hansen        | DE  | 6-2  | 244 | RFY | Slayton, Minn. (Tracy-Milroy Balaton H.S.)        |                |

| NO | NAME             | POS | HT   | WT  | YR  | HOMETOWN (PREVIOUS SCHOOL)                    |
|----|------------------|-----|------|-----|-----|-----------------------------------------------|
| 54 | Doug Asquith     | LB  | 6-0  | 218 | Sr. | St. Cloud Minn. (St. John's Prep H.S.)        |
| 55 | Thomas Johnson   | LB  | 5-11 | 203 | So. | Little Canada, Minn. (St. Agnes H.S.)         |
| 56 | Jacob Sullivan   | LB  | 6-0  | 219 | FY  | Chippewa Falls, Wis. (Chippewa Falls H.S.)    |
| 58 | Josh Popanda*    | DL  | 6-2  | 277 | Sr. | Twin Lakes, Wis. (Westosha H.S.)              |
| 59 | Jared Cross      | DL  | 6-2  | 272 | RFY | Champlin, Minn. (MSU Moorhead)                |
| 60 | Quinn Pieper     | OL  | 6-1  | 266 | FY  | Juneau, Wis. (Dodgeland H.S.)                 |
| 61 | Luke Sebald      | DL  | 6-2  | 233 | FY  | Brookfield, Wis. (Wisconsin Lutheran H.S.)    |
| 63 | Jack Houlton     | OL  | 6-2  | 273 | FY  | Excelsior, Minn. (Minnetonka H.S.)            |
| 64 | Matt Schmiesing  | OL  | 6-4  | 316 | FY  | Paynesville, Minn. (Paynesville H.S.)         |
| 65 | Jeremy Greeley   | OL  | 5-11 | 260 | FY  | Waite Park, Minn. (St. Cloud Apollo H.S.)     |
| 67 | Chris Bagley     | WR  | 6-4  | 180 | FY  | Oswego, Ill.                                  |
| 68 | Scott Horvath    | OL  | 6-1  | 283 | Jr. | Eagan, Minn. (Eastview H.S.)                  |
| 69 | Kyle Galik       | OL  | 6-2  | 276 | RFY | Oconto, Wis. (Oconto H.S.)                    |
| 70 | Greg Dingmann    | OL  | 6-4  | 298 | Sr. | Albany, Minn. (Albany H.S.)                   |
| 71 | Titus Cole       | DL  | 6-2  | 285 | Sr. | Glendale, Wis. (St. Norbert's College)        |
| 72 | Matt Harrington  | OL  | 6-4  | 327 | Jr. | Plymouth, Wis. (Plymouth H.S.)                |
| 73 | Mitchell Weidman | OL  | 6-6  | 311 | FY  | Baxter, Minn. (Brainerd H.S.)                 |
| 75 | Andrew Anderson  | OL  | 6-7  | 302 | So. | Crookston, Minn. (Central H.S.)               |
| 76 | Matt Theis       | OL  | 6-7  | 309 | Jr. | Eden Valley, Minn. (Eden Valley Watkins H.S.) |
| 77 | Ben Larson       | OL  | 6-2  | 275 | Jr. | Eagan, Minn. (Eagan H.S.)                     |
| 78 | Scott Ferguson   | OL  | 6-6  | 360 | Sr. | Bowmanville, Ontario (Bowmanville H.S.)       |
| 79 | Andrew Beckmann  | OL  | 6-3  | 295 | So. | Waseca, Minn. (Waseca H.S.)                   |
| 80 | Tyler Allery     | WR  | 6-1  | 197 | So. | Lakeville, Minn. (Dunseith H.S., N.D.)        |
| 81 | Matt Leis        | TE  | 6-3  | 203 | FY  | Chippewa Falls, Wis. (Chippewa Falls H.S.)    |
| 82 | Mike Westrich    | WR  | 6-1  | 189 | FY  | West Allis, Wis. (Central H.S.)               |
| 83 | Joe Borkhus      | WR  | 6-4  | 201 | RFY | Brookfield, Wis. (Milwaukee Lutheran H.S.)    |
| 84 | Jerahvenee Jones | WR  | 6-2  | 190 | FY  | Cloquet, Minn. (Cloquet H.S.)                 |
| 85 | Derek Pieper     | TE  | 6-4  | 242 | RFY | Juneau, Wis. (Dodgeland H.S.)                 |
| 86 | Nick Angellotti  | TE  | 6-4  | 230 | Jr. | Wauconda, Ill. (Wauconda H.S.)                |
| 87 | Tony Schmitz     | TE  | 6-5  | 228 | FY  | Sartell, Minn. (Sartell-St. Stephen H.S.)     |
| 88 | Corey Henne      | TE  | 6-4  | 230 | RFY | Brookfield, Wis. (Wisconsin Lutheran H.S.)    |
| 89 | Seth Noreen      | TE  | 6-6  | 240 | Jr. | Avon, Minn. (St. Cloud Apollo H.S.)           |
| 90 | Joe Winandy      | DL  | 6-4  | 286 | Sr. | Mazomanie, Wis. (Wisconsin Heights H.S.)      |
| 91 | Matt Schwartz    | DL  | 6-2  | 250 | Jr. | Forest Lake, Minn. (Forest Lake H.S.)         |
| 92 | Chris Rupe       | DL  | 6-1  | 256 | So. | Batavia, Iowa (Ottumwa H.S.)                  |
| 93 | Jeff Bias II     | DE  | 6-2  | 257 | RFY | Racine, Wis. (Horlick H.S.)                   |
| 94 | Aaron Pavek      | DL  | 6-5  | 236 | FY  | Baxter, Minn. (Brainerd H.S.)                 |
| 95 | Joel Godfredsen  | DL  | 6-1  | 273 | Jr. | Armstrong, Iowa (Armstrong Ringsted H.S.)     |
| 96 | Adam Shaffer     | DE  | 6-2  | 245 | Jr. | Dubuque, Iowa (Senior H.S.)                   |
| 97 | Ross Kees        | DE  | 6-2  | 245 | So. | Eagan, Minn. (Eagan H.S.)                     |
| 98 | Brad Muckenhirn  | DE  | 6-6  | 210 | FY  | Hutchinson, Minn. (Hutchinson H.S.)           |
| 99 | Matt Compton     | P   | 5-10 | 176 | Jr. | Owatonna, Minn. (Univ. of South Dakota)       |

**Pronunciation Guide**

|                    |                     |                    |                   |                     |             |
|--------------------|---------------------|--------------------|-------------------|---------------------|-------------|
| 2 Brandon Geiss    | Geye-s              | 36 Eric Poggenburg | Poe gen berg      | 64 Matt Schmiesing  | Sch me zing |
| 14 Theo Giple      | G-play              | 37 Kyle Risinger   | Rise enger        | 76 Matt Theis       | Tice        |
| 16 Philip Klaphake | Clap-hockey         | 40 Thomas Gruis    | GrewS             | 81 Matt Leis        | Lees        |
| 19 Brad Wignes     | Wig-ness            | 42 Brad Beeskow    | Bees cow          | 83 Joe Borkhus      | Boar cuss   |
| 20 Tyler Niedfeldt | Knee felt           | 49 Bo Putrah       | Pah tra           | 84 Jerahvenee Jones | RaRa Jones  |
| 27 Louis Kranovich | Lew is Kran o vitch | 51 Quamarr Tolbert | Kwa mar Toll-bert | 90 Joe Winandy      | Win nandy   |
| 28 Jack Moro       | Mor row             | 54 Doug Asquith    | As kweth          | 92 Chris Rupe       | Roop        |
| 31 Andy Folz       | Foals               | 58 Josh Popanda    | Pop panda         |                     |             |
| 33 Tony Kubus      | Kew bish            | 61 Luke Sebald     | See bald          |                     |             |

The Automated ScoreBook  
 St. Cloud State Overall Team Statistics (as of Nov 14, 2010)  
 All games

| TEAM STATISTICS              | SCSU      | OPP        |
|------------------------------|-----------|------------|
| SCORING.....                 | 359       | 191        |
| Points Per Game.....         | 32.6      | 17.4       |
| FIRST DOWNS.....             | 222       | 176        |
| Rushing.....                 | 105       | 69         |
| Passing.....                 | 112       | 96         |
| Penalty.....                 | 5         | 11         |
| RUSHING YARDAGE.....         | 2223      | 1168       |
| Yards gained rushing.....    | 2503      | 1520       |
| Yards lost rushing.....      | 280       | 352        |
| Rushing Attempts.....        | 451       | 357        |
| Average Per Rush.....        | 4.9       | 3.3        |
| Average Per Game.....        | 202.1     | 106.2      |
| TDs Rushing.....             | 20        | 8          |
| PASSING YARDAGE.....         | 2535      | 2242       |
| Att-Comp-Int.....            | 292-186-8 | 327-186-20 |
| Average Per Pass.....        | 8.7       | 6.9        |
| Average Per Catch.....       | 13.6      | 12.1       |
| Average Per Game.....        | 230.5     | 203.8      |
| TDs Passing.....             | 23        | 12         |
| TOTAL OFFENSE.....           | 4758      | 3410       |
| Total Plays.....             | 743       | 684        |
| Average Per Play.....        | 6.4       | 5.0        |
| Average Per Game.....        | 432.5     | 310.0      |
| KICK RETURNS: #-YARDS.....   | 38-597    | 48-869     |
| PUNT RETURNS: #-YARDS.....   | 17-187    | 15-229     |
| INT RETURNS: #-YARDS.....    | 20-276    | 8-205      |
| KICK RETURN AVERAGE.....     | 15.7      | 18.1       |
| PUNT RETURN AVERAGE.....     | 11.0      | 15.3       |
| INT RETURN AVERAGE.....      | 13.8      | 25.6       |
| FUMBLES-LOST.....            | 22-6      | 22-12      |
| PENALTIES-YARDS.....         | 64-621    | 52-342     |
| Average Per Game.....        | 56.5      | 31.1       |
| PUNTS-YARDS.....             | 48-1762   | 58-2085    |
| Average Per Punt.....        | 36.7      | 35.9       |
| Net punt average.....        | 29.9      | 31.3       |
| TIME OF POSSESSION/GAME..... | 30:41     | 29:04      |
| 3RD-DOWN CONVERSIONS.....    | 59/142    | 50/146     |
| 3rd-Down Pct.....            | 42%       | 34%        |
| 4TH-DOWN CONVERSIONS.....    | 6/18      | 7/15       |
| 4th-Down Pct.....            | 33%       | 47%        |
| SACKS BY-YARDS.....          | 26-179    | 19-102     |
| MISC YARDS.....              | 0         | 9          |
| TOUCHDOWNS SCORED.....       | 48        | 24         |
| FIELD GOALS-ATTEMPTS.....    | 8-11      | 8-12       |
| ON-SIDE KICKS.....           | 0-0       | 1-2        |
| RED-ZONE SCORES.....         | 34-41 83% | 18-32 56%  |
| RED-ZONE TOUCHDOWNS.....     | 27-41 66% | 11-32 34%  |
| PAT-ATTEMPTS.....            | 47-48 98% | 19-22 86%  |
| ATTENDANCE.....              | 20283     | 18329      |
| Games/Avg Per Game.....      | 5/4057    | 6/3055     |
| Neutral Site Games.....      |           | 0/0        |

| SCORE BY QUARTERS    | 1st | 2nd | 3rd | 4th | Total |
|----------------------|-----|-----|-----|-----|-------|
| St. Cloud State..... | 128 | 122 | 79  | 30  | 359   |
| Opponents.....       | 53  | 30  | 37  | 71  | 191   |

The Automated ScoreBook  
 St. Cloud State Overall Individual Statistics (as of Nov 14, 2010)  
 All games

| RUSHING              |     |      |      |     |      |      |      |       |       | PUNT RETURNS     |     |     |      |      |    |
|----------------------|-----|------|------|-----|------|------|------|-------|-------|------------------|-----|-----|------|------|----|
| GP                   | Att | Gain | Loss | Net | Avg  | TD   | Long | Avg/G |       | No.              | Yds | Avg | TD   | Long |    |
| Klaphake, Phillip    | 11  | 119  | 836  | 133 | 703  | 5.9  | 9    | 44    | 63.9  | Peterson, Chad   | 7   | 55  | 7.9  | 0    | 18 |
| Peterson, Chad       | 9   | 96   | 477  | 2   | 475  | 4.9  | 1    | 42    | 52.8  | Kubes, Tony      | 4   | 33  | 8.2  | 0    | 9  |
| Steward, Dante       | 7   | 83   | 412  | 9   | 403  | 4.9  | 1    | 43    | 57.6  | Williams, Fred   | 3   | 58  | 19.3 | 0    | 27 |
| Treat, Damon         | 9   | 47   | 391  | 9   | 382  | 8.1  | 3    | 69    | 42.4  | Godfredsen, Joel | 1   | 10  | 10.0 | 0    | 0  |
| Walker, Mike         | 4   | 33   | 184  | 5   | 179  | 5.4  | 3    | 33    | 44.8  | Treat, Damon     | 1   | 22  | 22.0 | 0    | 22 |
| Folz, Andy           | 6   | 28   | 106  | 8   | 98   | 3.5  | 0    | 26    | 16.3  | Shoemaker, Eli   | 1   | 6   | 6.0  | 0    | 0  |
| Geiss, Brandon       | 1   | 10   | 31   | 0   | 31   | 3.1  | 2    | 6     | 31.0  | Woods, Miky      | 0   | 3   | 0.0  | 0    | 0  |
| Christopherson, Tate | 2   | 6    | 22   | 4   | 18   | 3.0  | 0    | 8     | 9.0   | Total.....       | 17  | 187 | 11.0 | 0    | 27 |
| Compton, Matt        | 6   | 1    | 13   | 0   | 13   | 13.0 | 0    | 7     | 2.2   | Opponents.....   | 15  | 229 | 15.3 | 2    | 48 |
| Meade, Brad          | 7   | 9    | 25   | 16  | 9    | 1.0  | 0    | 14    | 1.3   | INTERCEPTIONS    |     |     |      |      |    |
| Williams, Fred       | 11  | 1    | 6    | 0   | 6    | 6.0  | 1    | 6     | 0.5   | No.              | Yds | Avg | TD   | Long |    |
| TEAM                 | 10  | 18   | 0    | 94  | -94  | -5.2 | 0    | 0     | -9.4  | Niedfeldt, Tyler | 6   | 55  | 9.2  | 1    | 32 |
| Total.....           | 11  | 451  | 2503 | 280 | 2223 | 4.9  | 20   | 69    | 202.1 | Everson, Joe     | 5   | 72  | 14.4 | 1    | 29 |
| Opponents.....       | 11  | 357  | 1520 | 352 | 1168 | 3.3  | 8    | 29    | 106.2 | Moro, Jack       | 2   | 0   | 0.0  | 0    | 0  |

| PASSING              |       |             |            |      |      |     |       |       |                  |   |    |      |   |    |
|----------------------|-------|-------------|------------|------|------|-----|-------|-------|------------------|---|----|------|---|----|
| GP                   | Effic | Cmp-Att-Int | Pct        | Yds  | TD   | Lng | Avg/G |       |                  |   |    |      |   |    |
| Klaphake, Phillip    | 11    | 165.35      | 180-274-6  | 65.7 | 2490 | 23  | 83    | 226.4 | Kubes, Tony      | 2 | 85 | 42.5 | 1 | 65 |
| Meade, Brad          | 7     | 8.48        | 3-10-2     | 30.0 | 22   | 0   | 12    | 3.1   | West, Rashad     | 1 | 23 | 23.0 | 0 | 23 |
| TEAM                 | 10    | 51.53       | 2-6-0      | 33.3 | 13   | 0   | 10    | 1.3   | Winandy, Joe     | 1 | 30 | 30.0 | 0 | 30 |
| Christopherson, Tate | 2     | 92.00       | 1-2-0      | 50.0 | 10   | 0   | 10    | 5.0   | Williams, Wade   | 1 | 1  | 1.0  | 0 | 1  |
| Total.....           | 11    | 157.14      | 186-292-8  | 63.7 | 2535 | 23  | 83    | 230.5 | Key, Chris       | 1 | 10 | 10.0 | 0 | 10 |
| Opponents.....       | 11    | 114.35      | 186-327-20 | 56.9 | 2242 | 12  | 87    | 203.8 | Matthews, Marvin | 1 | 0  | 0.0  | 0 | 0  |

| RECEIVING         |     |     |      |      |      |       |       |                    |     | KICK RETURNS |      |      |    |  |
|-------------------|-----|-----|------|------|------|-------|-------|--------------------|-----|--------------|------|------|----|--|
| GP                | No. | Yds | Avg  | TD   | Long | Avg/G |       | No.                | Yds | Avg          | TD   | Long |    |  |
| Williams, Fred    | 11  | 76  | 1286 | 16.9 | 16   | 83    | 116.9 | Williams, Fred     | 18  | 308          | 17.1 | 0    | 33 |  |
| Allery, Tyler     | 11  | 24  | 372  | 15.5 | 2    | 75    | 33.8  | Peterson, Chad     | 8   | 154          | 19.2 | 0    | 27 |  |
| Dorsett, Ernest   | 11  | 21  | 166  | 7.9  | 0    | 20    | 15.1  | Dorsett, Ernest    | 7   | 103          | 14.7 | 0    | 30 |  |
| Angelloti, Nick   | 9   | 13  | 172  | 13.2 | 2    | 27    | 19.1  | Treat, Damon       | 2   | 21           | 10.5 | 0    | 16 |  |
| Shoemaker, Eli    | 11  | 11  | 110  | 10.0 | 1    | 23    | 10.0  | West, Rashad       | 1   | 0            | 0.0  | 0    | 0  |  |
| Treat, Damon      | 9   | 7   | 60   | 8.6  | 0    | 25    | 6.7   | Popanda, Josh      | 1   | 11           | 11.0 | 0    | 11 |  |
| Henne, Corey      | 11  | 6   | 113  | 18.8 | 2    | 35    | 10.3  | MacPherson, Justin | 1   | 0            | 0.0  | 0    | 0  |  |
| Noreen, Seth      | 10  | 5   | 67   | 13.4 | 0    | 22    | 6.7   | Total.....         | 38  | 597          | 15.7 | 0    | 33 |  |
| Steward, Dante    | 7   | 5   | 50   | 10.0 | 0    | 17    | 7.1   | Opponents.....     | 48  | 869          | 18.1 | 0    | 59 |  |
| Peterson, Chad    | 9   | 5   | 39   | 7.8  | 0    | 13    | 4.3   | FUMBLE RETURNS     |     |              |      |      |    |  |
| Walker, Mike      | 4   | 4   | 35   | 8.8  | 0    | 15    | 8.8   | No.                | Yds | Avg          | TD   | Long |    |  |
| Robinson, Renard  | 7   | 3   | 32   | 10.7 | 0    | 15    | 4.6   | Popanda, Josh      | 1   | 78           | 78.0 | 1    | 78 |  |
| Geiss, Brandon    | 1   | 3   | 16   | 5.3  | 0    | 12    | 16.0  | Kubes, Tony        | 1   | 20           | 20.0 | 1    | 20 |  |
| Pieper, Derek     | 1   | 2   | 22   | 11.0 | 0    | 12    | 22.0  | Total.....         | 2   | 98           | 49.0 | 2    | 78 |  |
| Klaphake, Phillip | 11  | 1   | -5   | -5.0 | 0    | 0     | -0.5  | Opponents.....     | 1   | 6            | 6.0  | 1    | 6  |  |
| Total.....        | 11  | 186 | 2535 | 13.6 | 23   | 83    | 230.5 |                    |     |              |      |      |    |  |
| Opponents.....    | 11  | 186 | 2242 | 12.1 | 12   | 87    | 203.8 |                    |     |              |      |      |    |  |

| SCORING           | TD | FGs  | Kick  | PATs |     |      |     | TOTAL OFFENSE        | G  | Plays | Rush | Pass | Total | Avg/G |
|-------------------|----|------|-------|------|-----|------|-----|----------------------|----|-------|------|------|-------|-------|
|                   |    |      |       | Rush | Rec | Pass | DKP |                      |    |       |      |      |       |       |
| Williams, Fred    | 17 | 0-0  | 0-0   | 0-0  | 0-0 | 0    | 102 | Klaphake, Phillip    | 11 | 393   | 703  | 2490 | 3193  | 290.3 |
| Aldridge, Tyler   | 0  | 8-11 | 47-48 | 0-0  | 0-0 | 0    | 71  | Peterson, Chad       | 9  | 96    | 475  | 0    | 475   | 52.8  |
| Klaphake, Phillip | 9  | 0-0  | 0-0   | 0-0  | 0-0 | 0    | 54  | Steward, Dante       | 7  | 83    | 403  | 0    | 403   | 57.6  |
| Treat, Damon      | 3  | 0-0  | 0-0   | 0-0  | 0-0 | 0    | 18  | Treat, Damon         | 9  | 47    | 382  | 0    | 382   | 42.4  |
| Walker, Mike      | 3  | 0-0  | 0-0   | 0-0  | 0-0 | 0    | 18  | Walker, Mike         | 4  | 33    | 179  | 0    | 179   | 44.8  |
| Allery, Tyler     | 2  | 0-0  | 0-0   | 0-0  | 0-0 | 0    | 12  | Folz, Andy           | 6  | 28    | 98   | 0    | 98    | 16.3  |
| Kubes, Tony       | 2  | 0-0  | 0-0   | 0-0  | 0-0 | 0    | 12  | Geiss, Brandon       | 1  | 10    | 31   | 0    | 31    | 31.0  |
| Angelloti, Nick   | 2  | 0-0  | 0-0   | 0-0  | 0-0 | 0    | 12  | Meade, Brad          | 7  | 19    | 9    | 22   | 31    | 4.4   |
| Henne, Corey      | 2  | 0-0  | 0-0   | 0-0  | 0-0 | 0    | 12  | Christopherson, Tate | 2  | 8     | 18   | 10   | 28    | 14.0  |
| Geiss, Brandon    | 2  | 0-0  | 0-0   | 0-0  | 0-0 | 0    | 12  | Compton, Matt        | 6  | 1     | 13   | 0    | 13    | 2.2   |
| Steward, Dante    | 1  | 0-0  | 0-0   | 0-0  | 0-0 | 0    | 6   | Williams, Fred       | 11 | 1     | 6    | 0    | 6     | 0.5   |
| Shoemaker, Eli    | 1  | 0-0  | 0-0   | 0-0  | 0-0 | 0    | 6   | TEAM                 | 10 | 24    | -94  | 13   | -81   | -8.1  |
| Everson, Joe      | 1  | 0-0  | 0-0   | 0-0  | 0-0 | 0    | 6   | Total.....           | 11 | 743   | 2223 | 2535 | 4758  | 432.5 |
| Niedfeldt, Tyler  | 1  | 0-0  | 0-0   | 0-0  | 0-0 | 0    | 6   | Opponents.....       | 11 | 684   | 1168 | 2242 | 3410  | 310.0 |
| Peterson, Chad    | 1  | 0-0  | 0-0   | 0-0  | 0-0 | 0    | 6   |                      |    |       |      |      |       |       |
| Popanda, Josh     | 1  | 0-0  | 0-0   | 0-0  | 0-0 | 0    | 6   |                      |    |       |      |      |       |       |
| Total.....        | 48 | 8-11 | 47-48 | 0-0  | 0-0 | 0    | 359 |                      |    |       |      |      |       |       |
| Opponents.....    | 24 | 8-12 | 19-22 | 1-1  | 0-1 | 0    | 191 |                      |    |       |      |      |       |       |

| FIELD GOALS     | FGM-FGA | Pct  | 01-19 | 20-29 | 30-39 | 40-49 | 50-59 | Lg | Blk |
|-----------------|---------|------|-------|-------|-------|-------|-------|----|-----|
| Aldridge, Tyler | 8-11    | 72.7 | 0-0   | 4-6   | 2-3   | 2-2   | 0-0   | 42 | 1   |

| FG SEQUENCE          | St. Cloud State  | OPPONENTS  |
|----------------------|------------------|------------|
| Augustana (SD)       | (37)             | 34 (38)    |
| Concordia University | -                | 40 (37)    |
| Winona State         | (31), 25         | (27), 36   |
| MARY                 | (28), (42), (22) | 38         |
| Northern State       | 28               | (43)       |
| Minnesota State      | (20)             | (26)       |
| Southwest Minnesota  | 32, (21)         | -          |
| Minnesota, Crookston | -                | -          |
| Minnesota Duluth     | (42)             | (19), (36) |
| Bemidji State        | -                | -          |
| MSU Moorhead         | -                | (25)       |

Numbers in parentheses indicate field goal was made.

| PUNTING           | No. | Yds  | Avg  | Long | TB | FC | I20 | Blkd | TOTAL | G                 | Plays | Rush | Pass | Total | Avg/G |                |
|-------------------|-----|------|------|------|----|----|-----|------|-------|-------------------|-------|------|------|-------|-------|----------------|
|                   |     |      |      |      |    |    |     |      |       |                   |       |      |      |       |       | Opponents..... |
| Aldridge, Tyler   | 34  | 1284 | 37.8 | 63   | 4  | 3  | 7   | 0    | 102   | Klaphake, Phillip | 11    | 393  | 703  | 2490  | 3193  | 290.3          |
| Compton, Matt     | 12  | 447  | 37.2 | 49   | 1  | 2  | 1   | 0    | 71    | Peterson, Chad    | 9     | 96   | 475  | 0     | 475   | 52.8           |
| TEAM              | 1   | 0    | 0.0  | 0    | 0  | 0  | 0   | 0    | 54    | Steward, Dante    | 7     | 83   | 403  | 0     | 403   | 57.6           |
| Klaphake, Phillip | 1   | 31   | 31.0 | 31   | 0  | 0  | 1   | 0    | 18    | Treat, Damon      | 9     | 47   | 382  | 0     | 382   | 42.4           |
| Total.....        | 48  | 1762 | 36.7 | 63   | 5  | 4  | 10  | 1    | 359   | Walker, Mike      | 4     | 33   | 179  | 0     | 179   | 44.8           |
| Opponents.....    | 58  | 2085 | 35.9 | 64   | 4  | 12 | 14  | 2    | 191   | Folz, Andy        | 6     | 28   | 98   | 0     | 98    | 16.3           |

| KICKOFFS        | No. | Yds  | Avg  | TB | OB | Retn | Net  | YdLn | TOTAL | G                 | Plays | Rush | Pass | Total | Avg/G |                |
|-----------------|-----|------|------|----|----|------|------|------|-------|-------------------|-------|------|------|-------|-------|----------------|
|                 |     |      |      |    |    |      |      |      |       |                   |       |      |      |       |       | Opponents..... |
| Aldridge, Tyler | 67  | 4105 | 61.3 | 13 | 5  | 869  | 44.4 | 25   | 359   | Klaphake, Phillip | 11    | 393  | 703  | 2490  | 3193  | 290.3          |
| Total.....      | 67  | 4105 | 61.3 | 13 | 5  | 869  | 44.4 | 25   | 359   | Peterson, Chad    | 9     | 96   | 475  | 0     | 475   | 52.8           |
| Opponents.....  | 41  | 2385 | 58.2 | 2  | 1  | 597  | 42.6 | 27   | 191   | Steward, Dante    | 7     | 83   | 403  | 0     | 403   | 57.6           |

| ALL PURPOSE          | G  | Rush | Rec  | PR | KOR | IR  | Tot  | Avg/G |
|----------------------|----|------|------|----|-----|-----|------|-------|
|                      |    |      |      |    |     |     |      |       |
| Williams, Fred       | 11 | 6    | 1286 | 58 | 308 | 0   | 1658 | 150.7 |
| Peterson, Chad       | 9  | 475  | 39   | 55 | 154 | 0   | 723  | 80.3  |
| Klaphake, Phillip    | 11 | 703  | -5   | 0  | 0   | 0   | 698  | 63.5  |
| Treat, Damon         | 9  | 382  | 60   | 22 | 21  | 0   | 485  | 53.9  |
| Steward, Dante       | 7  | 403  | 50   | 0  | 0   | 0   | 453  | 64.7  |
| Allery, Tyler        | 11 | 0    | 372  | 0  | 0   | 0   | 372  | 33.8  |
| Dorsett, Ernest      | 11 | 0    | 166  | 0  | 103 | 0   | 269  | 24.5  |
| Walker, Mike         | 4  | 179  | 35   | 0  | 0   | 0   | 214  | 53.5  |
| Angelloti, Nick      | 9  | 0    | 172  | 0  | 0   | 0   | 172  | 19.1  |
| Kubes, Tony          | 11 | 0    | 33   | 0  | 85  | 118 | 10.7 |       |
| Shoemaker, Eli       | 11 | 0    | 110  | 6  | 0   | 0   | 116  | 10.5  |
| Henne, Corey         | 11 | 0    | 113  | 0  | 0   | 0   | 113  | 10.3  |
| Everson, Joe         | 6  | 98   | 0    | 0  | 0   | 0   | 98   | 16.3  |
| Noreen, Seth         | 10 | 0    | 67   | 0  | 0   | 0   | 67   | 6.7   |
| Niedfeldt, Tyler     | 11 | 0    | 0    | 0  | 0   | 55  | 55   | 5.0   |
| Geiss, Brandon       | 1  | 31   | 16   | 0  | 0   | 0   | 47   | 47.0  |
| Robinson, Renard     | 7  | 0    | 32   | 0  | 0   | 0   | 32   | 4.6   |
| Winandy, Joe         | 11 | 0    | 0    | 0  | 0   | 30  | 30   | 2.7   |
| West, Rashad         | 10 | 0    | 0    | 0  | 0   | 23  | 23   | 2.3   |
| Pieper, Derek        | 1  | 0    | 22   | 0  | 0   | 0   | 22   | 22.0  |
| Christopherson, Tate | 2  | 18   | 0    | 0  | 0   | 0   | 18   | 9.0   |
| Compton, Matt        | 6  | 13   |      |    |     |     |      |       |

The Automated ScoreBook  
 St. Cloud State Overall Defensive Statistics (as of Nov 14, 2010)  
 All games

| DEFENSIVE LEADERS     | -----Tackles----- |      |     |       | -Sacks- |        | ---Pass Def--- |      |     | -Fumbles- |    | Blkd |     |
|-----------------------|-------------------|------|-----|-------|---------|--------|----------------|------|-----|-----------|----|------|-----|
|                       | GP                | Solo | Ast | Total | TFL/Yds | No-Yds | Int-Yds        | BrUp | QBH | Rcv-Yds   | FF | Kick | Saf |
| 33 Kubes, Tony        | 11                | 45   | 26  | 71    | 5.5-35  | 2.0-13 | 2-85           | 1    | .   | 4-20      | 3  | .    | .   |
| 55 Johnson, Thomas    | 8                 | 20   | 29  | 49    | 4.0-14  | 1.0-7  | .              | 1    | 1   | .         | .  | .    | .   |
| 32 Matthews, Marvin   | 8                 | 30   | 17  | 47    | 1.0-6   | .      | 1-0            | 5    | .   | .         | .  | .    | .   |
| 40 Gruis, Thomas      | 10                | 21   | 23  | 44    | 6.5-42  | 4.0-33 | .              | 4    | .   | 1-0       | .  | .    | .   |
| 20 Niedfeldt, Tyler   | 11                | 20   | 20  | 40    | 1.0-3   | .      | 6-55           | 5    | .   | .         | .  | 1    | .   |
| 44 Kave, Cody         | 11                | 12   | 27  | 39    | 4.5-8   | 0.5-1  | .              | .    | 1   | .         | .  | .    | .   |
| 19 Wignes, Brad       | 11                | 19   | 16  | 35    | 5.5-10  | .      | .              | 2    | 2   | 1-0       | 1  | .    | .   |
| 95 Godfredsen, Joel   | 11                | 11   | 22  | 33    | 8.0-38  | 3.5-30 | .              | .    | 2   | .         | .  | 1    | .   |
| 24 Everson, Joe       | 10                | 22   | 11  | 33    | 1.0-8   | .      | 5-72           | 2    | .   | .         | 1  | .    | .   |
| 7 Martin, Mark        | 9                 | 17   | 14  | 31    | 4.0-18  | 1.5-9  | .              | 2    | 2   | 2-0       | 1  | .    | .   |
| 58 Popanda, Josh      | 11                | 9    | 20  | 29    | 8.5-22  | 1.0-5  | .              | 1    | .   | 2-78      | .  | .    | .   |
| 36 Poggenburg, E      | 11                | 17   | 9   | 26    | 0.5-1   | .      | .              | 6    | .   | .         | .  | .    | .   |
| 90 Winandy, Joe       | 11                | 10   | 16  | 26    | 5.0-17  | 3.0-15 | 1-30           | 1    | 2   | .         | 1  | .    | .   |
| 71 Cole, Titus        | 11                | 8    | 17  | 25    | 2.0-12  | 1.0-10 | .              | .    | .   | .         | .  | .    | .   |
| 25 West, Rashad       | 10                | 16   | 7   | 23    | .       | .      | 1-23           | .    | .   | .         | .  | .    | .   |
| 96 Shaffer, Adam      | 11                | 7    | 14  | 21    | 2.5-6   | 1.0-2  | .              | 2    | 1   | .         | 1  | .    | .   |
| 45 Key, Chris         | 11                | 12   | 8   | 20    | 1.0-0   | .      | 1-10           | .    | .   | .         | .  | .    | .   |
| 91 Schwartz, Matt     | 8                 | 9    | 10  | 19    | 5.0-17  | 2.0-10 | .              | .    | 1   | .         | .  | .    | .   |
| 92 Rupe, Chris        | 11                | 6    | 12  | 18    | 4.5-30  | 4.0-30 | .              | .    | .   | 1-0       | .  | .    | .   |
| 21 Williams, Wade     | 7                 | 11   | 6   | 17    | .       | .      | 1-1            | 2    | .   | .         | 1  | .    | .   |
| 47 MacPherson, Justin | 11                | 8    | 9   | 17    | 1.0-10  | 1.0-10 | .              | 1    | 1   | .         | .  | .    | .   |
| 28 Moro, Jack         | 11                | 9    | 6   | 15    | 0.5-1   | .      | 2-0            | 1    | .   | 1-0       | .  | .    | .   |
| 14 Giple, Theo        | 9                 | 4    | 4   | 8     | .       | .      | .              | 1    | .   | .         | .  | .    | .   |
| 22 Woods, Miky        | 7                 | 2    | 3   | 5     | .       | .      | .              | .    | .   | .         | .  | .    | .   |
| 17 Shoemaker, Eli     | 11                | 1    | 4   | 5     | .       | .      | .              | .    | .   | .         | .  | 1    | .   |
| 54 Asquith, Doug      | 4                 | 4    | .   | 4     | .       | .      | .              | .    | .   | .         | .  | .    | .   |
| 53 Hansen, Chris      | 6                 | 2    | 2   | 4     | 1.0-4   | .      | .              | .    | .   | .         | .  | .    | .   |
| 51 Tolbert, Quamarr   | 3                 | 2    | 2   | 4     | .       | .      | .              | .    | .   | .         | .  | .    | .   |
| 30 Steward, Dante     | 7                 | 2    | 1   | 3     | .       | .      | .              | .    | .   | .         | .  | .    | .   |
| 93 Bias, Jeff         | 2                 | .    | 3   | 3     | 0.5-4   | 0.5-4  | .              | .    | .   | .         | .  | .    | .   |
| 48 Bestgen, Todd      | 3                 | 1    | 1   | 2     | .       | .      | .              | .    | .   | .         | 1  | .    | .   |
| 10 Aldridge, Tyler    | 11                | 1    | 1   | 2     | .       | .      | .              | .    | .   | .         | .  | .    | .   |
| 8 Williams, Fred      | 11                | 2    | .   | 2     | .       | .      | .              | .    | .   | .         | .  | .    | .   |
| 34 Blaser, Dan        | 10                | 1    | .   | 1     | .       | .      | .              | .    | .   | .         | .  | .    | .   |
| 6 Peterson, Chad      | 9                 | .    | 1   | 1     | .       | .      | .              | .    | .   | .         | .  | .    | .   |
| 9 Evans, Rob          | 8                 | .    | 1   | 1     | .       | .      | .              | .    | .   | .         | .  | .    | .   |
| 3 Treat, Damon        | 9                 | 1    | .   | 1     | .       | .      | .              | .    | .   | .         | .  | .    | .   |
| 76 Theis, Matt        | 11                | 1    | .   | 1     | .       | .      | .              | .    | .   | .         | .  | .    | .   |
| 4 Dorsett, Ernest     | 11                | 1    | .   | 1     | .       | .      | .              | .    | .   | .         | .  | .    | .   |
| TM TEAM               | 10                | 1    | .   | 1     | .       | .      | .              | .    | .   | .         | 1  | .    | .   |
| 89 Noreen, Seth       | 10                | 1    | .   | 1     | .       | .      | .              | .    | .   | .         | .  | .    | .   |
| 31 Folz, Andy         | 6                 | 1    | .   | 1     | .       | .      | .              | .    | .   | .         | .  | .    | .   |
| Total.....            | 11                | 367  | 362 | 729   | 73-306  | 26-179 | 20-276         | 37   | 13  | 12-98     | 11 | 3    | .   |
| Opponents.....        | 11                | 410  | 372 | 782   | 48-194  | 19-102 | 8-205          | 27   | 3   | 6-6       | 9  | 4    | 1   |

The Automated ScoreBook  
 St. Cloud State Combined Team Statistics (as of Nov 16, 2010)  
 All games

| RECORD:             | OVERALL | HOME    | AWAY    | NEUTRAL |
|---------------------|---------|---------|---------|---------|
| ALL GAMES.....      | (9-2-0) | (5-0-0) | (4-2-0) | (0-0-0) |
| CONFERENCE.....     | (9-1-0) | (5-0-0) | (4-1-0) | (0-0-0) |
| NON-CONFERENCE..... | (0-1-0) | (0-0-0) | (0-1-0) | (0-0-0) |

| DATE          | OPPONENT                | W/L | SCORE | ATTEND | TEAM STATISTICS         | SCSU  | OPP   |
|---------------|-------------------------|-----|-------|--------|-------------------------|-------|-------|
| Sep 4, 2010   | at Augustana (SD)       | L   | 23-32 | 4526   | FIRST DOWNS.....        | 222   | 176   |
| *Sep 11, 2010 | at Concordia University | W   | 35-10 | 1634   | Rushing.....            | 105   | 69    |
| *Sep 18, 2010 | #17 WINONA STATE        | W   | 31-26 | 4106   | Passing.....            | 112   | 96    |
| *Sep 25, 2010 | MARY                    | W   | 30-14 | 4050   | Penalty.....            | 5     | 11    |
| *Oct 02, 2010 | at Northern State       | W   | 42-10 | 2790   | RUSHING YARDAGE.....    | 2223  | 1168  |
| *Oct 09, 2010 | at Minnesota State      | W   | 31-17 | 5347   | Yards gained rushing... | 2503  | 1520  |
| *Oct 16, 2010 | SOUTHWEST MINNESOTA     | W   | 24-6  | 4036   | Yards lost rushing..... | 280   | 352   |
| *Oct 23, 2010 | MINNESOTA, CROOKSTON    | W   | 49-6  | 4059   | Rushing Attempts.....   | 451   | 357   |
| *Oct 30, 2010 | at #2 Minnesota Duluth  | L   | 17-40 | 4032   | Average Per Rush.....   | 4.9   | 3.3   |
| *Nov 06, 2010 | BEMIDJI STATE           | W   | 35-14 | 4032   | Average Per Game.....   | 202.1 | 106.2 |
| *Nov 13, 2010 | at MSU Moorhead         | W   | 42-16 | -      | TDs Rushing.....        | 20    | 8     |

\* denotes conference game

| RUSHING        | GP | Att | Gain | Loss | Net  | Avg  | TD | Long | Avg/G |
|----------------|----|-----|------|------|------|------|----|------|-------|
| Klaphake, P.   | 11 | 119 | 836  | 133  | 703  | 5.9  | 9  | 44   | 63.9  |
| Peterson, Chad | 9  | 96  | 477  | 2    | 475  | 4.9  | 1  | 42   | 52.8  |
| Steward, Dante | 7  | 83  | 412  | 9    | 403  | 4.9  | 1  | 43   | 57.6  |
| Treat, Damon   | 9  | 47  | 391  | 9    | 382  | 8.1  | 3  | 69   | 42.4  |
| Walker, Mike   | 4  | 33  | 184  | 5    | 179  | 5.4  | 3  | 33   | 44.8  |
| Folz, Andy     | 6  | 28  | 106  | 8    | 98   | 3.5  | 0  | 26   | 16.3  |
| Geiss, Brandon | 1  | 10  | 31   | 0    | 31   | 3.1  | 2  | 6    | 31.0  |
| Christopherson | 2  | 6   | 22   | 4    | 18   | 3.0  | 0  | 8    | 9.0   |
| Compton, Matt  | 6  | 1   | 13   | 0    | 13   | 13.0 | 0  | 7    | 2.2   |
| Meade, Brad    | 7  | 9   | 25   | 16   | 9    | 1.0  | 0  | 14   | 1.3   |
| Williams, Fred | 11 | 1   | 6    | 0    | 6    | 6.0  | 1  | 6    | 0.5   |
| TEAM           | 10 | 18  | 0    | 94   | -94  | -5.2 | 0  | 0    | -9.4  |
| Total.....     | 11 | 451 | 2503 | 280  | 2223 | 4.9  | 20 | 69   | 202.1 |
| Opponents..... | 11 | 357 | 1520 | 352  | 1168 | 3.3  | 8  | 29   | 106.2 |

| TEAM STATISTICS           | SCSU      | OPP        |
|---------------------------|-----------|------------|
| FIRST DOWNS.....          | 222       | 176        |
| Rushing.....              | 105       | 69         |
| Passing.....              | 112       | 96         |
| Penalty.....              | 5         | 11         |
| RUSHING YARDAGE.....      | 2223      | 1168       |
| Yards gained rushing...   | 2503      | 1520       |
| Yards lost rushing.....   | 280       | 352        |
| Rushing Attempts.....     | 451       | 357        |
| Average Per Rush.....     | 4.9       | 3.3        |
| Average Per Game.....     | 202.1     | 106.2      |
| TDs Rushing.....          | 20        | 8          |
| PASSING YARDAGE.....      | 2535      | 2242       |
| Att-Comp-Int.....         | 292-186-8 | 327-186-20 |
| Average Per Pass.....     | 8.7       | 6.9        |
| Average Per Catch.....    | 13.6      | 12.1       |
| Average Per Game.....     | 230.5     | 203.8      |
| TDs Passing.....          | 23        | 12         |
| TOTAL OFFENSE.....        | 4758      | 3410       |
| Total Plays.....          | 743       | 684        |
| Average Per Play.....     | 6.4       | 5.0        |
| Average Per Game.....     | 432.5     | 310.0      |
| KICK RETURNS: #-YARDS...  | 38-597    | 48-869     |
| PUNT RETURNS: #-YARDS...  | 17-187    | 15-229     |
| INT RETURNS: #-YARDS....  | 20-276    | 8-205      |
| FUMBLES-LOST.....         | 22-6      | 22-12      |
| PENALTIES-YARDS.....      | 64-621    | 52-342     |
| PUNTS-AVG.....            | 48-36.7   | 58-35.9    |
| TIME OF POSSESSION/GAME.. | 30:41     | 29:04      |
| 3RD-DOWN CONVERSIONS....  | 59/142    | 50/146     |
| 4TH-DOWN CONVERSIONS....  | 6/18      | 7/15       |

| PASSING        | GP | Effic  | Comp | Att | Int | Pct  | Yds  | TD | Lng | Avg/G |
|----------------|----|--------|------|-----|-----|------|------|----|-----|-------|
| Klaphake, P.   | 11 | 165.35 | 180  | 274 | 6   | 65.7 | 2490 | 23 | 83  | 226.4 |
| Meade, Brad    | 7  | 8.48   | 3    | 10  | 2   | 30.0 | 22   | 0  | 12  | 3.1   |
| TEAM           | 10 | 51.53  | 2    | 6   | 0   | 33.3 | 13   | 0  | 10  | 1.3   |
| Christopherson | 2  | 92.00  | 1    | 2   | 0   | 50.0 | 10   | 0  | 10  | 5.0   |
| Total.....     | 11 | 157.14 | 186  | 292 | 8   | 63.7 | 2535 | 23 | 83  | 230.5 |
| Opponents..... | 11 | 114.35 | 186  | 327 | 20  | 56.9 | 2242 | 12 | 87  | 203.8 |

| INTERCEPTIONS  | No. | Yds | Avg  | TD | Long |
|----------------|-----|-----|------|----|------|
| Niedfeldt, T   | 6   | 55  | 9.2  | 1  | 32   |
| Everson, Joe   | 5   | 72  | 14.4 | 1  | 29   |
| Moro, Jack     | 2   | 0   | 0.0  | 0  | 0    |
| Kubes, Tony    | 2   | 85  | 42.5 | 1  | 65   |
| West, Rashad   | 1   | 23  | 23.0 | 0  | 23   |
| Winandy, Joe   | 1   | 30  | 30.0 | 0  | 30   |
| Williams, Wade | 1   | 1   | 1.0  | 0  | 1    |
| Matthews, M    | 1   | 0   | 0.0  | 0  | 0    |
| Key, Chris     | 1   | 10  | 10.0 | 0  | 10   |
| Total.....     | 20  | 276 | 13.8 | 3  | 65   |
| Opponents..... | 8   | 205 | 25.6 | 1  | 72   |

| RECEIVING       | GP | No. | Yds  | Avg  | TD | Long | Avg/G |
|-----------------|----|-----|------|------|----|------|-------|
| Williams, Fred  | 11 | 76  | 1286 | 16.9 | 16 | 83   | 116.9 |
| Allery, Tyler   | 11 | 24  | 372  | 15.5 | 2  | 75   | 33.8  |
| Dorsett, Ernest | 11 | 21  | 166  | 7.9  | 0  | 20   | 15.1  |
| Angelloti, Nick | 9  | 13  | 172  | 13.2 | 2  | 27   | 19.1  |
| Shoemaker, Eli  | 11 | 11  | 110  | 10.0 | 1  | 23   | 10.0  |
| Treat, Damon    | 9  | 7   | 60   | 8.6  | 0  | 25   | 6.7   |
| Henne, Corey    | 11 | 6   | 113  | 18.8 | 2  | 35   | 10.3  |
| Noreen, Seth    | 10 | 5   | 67   | 13.4 | 0  | 22   | 6.7   |
| Steward, Dante  | 7  | 5   | 50   | 10.0 | 0  | 17   | 7.1   |
| Peterson, Chad  | 9  | 5   | 39   | 7.8  | 0  | 13   | 4.3   |
| Walker, Mike    | 4  | 4   | 35   | 8.8  | 0  | 15   | 8.8   |
| Robinson, R.    | 7  | 3   | 32   | 10.7 | 0  | 15   | 4.6   |
| Geiss, Brandon  | 1  | 3   | 16   | 5.3  | 0  | 12   | 16.0  |
| Pieper, Derek   | 1  | 2   | 22   | 11.0 | 0  | 12   | 22.0  |
| Klaphake, P.    | 11 | 1   | -5   | -5.0 | 0  | 0    | -0.5  |
| Total.....      | 11 | 186 | 2535 | 13.6 | 23 | 83   | 230.5 |
| Opponents.....  | 11 | 186 | 2242 | 12.1 | 12 | 87   | 203.8 |

| PUNTING         | No. | Yds  | Avg  | Long | TB | FC | I20 | Blkd |
|-----------------|-----|------|------|------|----|----|-----|------|
| Aldridge, Tyler | 34  | 1284 | 37.8 | 63   | 4  | 3  | 7   | 0    |
| Compton, Matt   | 12  | 447  | 37.2 | 49   | 1  | 1  | 2   | 1    |
| TEAM            | 1   | 0    | 0.0  | 0    | 0  | 0  | 0   | 0    |
| Klaphake, P.    | 1   | 31   | 31.0 | 31   | 0  | 0  | 1   | 0    |
| Total.....      | 48  | 1762 | 36.7 | 63   | 5  | 4  | 10  | 1    |
| Opponents.....  | 58  | 2085 | 35.9 | 64   | 4  | 12 | 14  | 2    |

| FIELD GOALS     | FGM-FGA | Pct  | 01-19 | 20-29 | 30-39 | 40-49 | 50-99 | Lg | Blk |
|-----------------|---------|------|-------|-------|-------|-------|-------|----|-----|
| Aldridge, Tyler | 8-11    | 72.7 | 0-0   | 4-6   | 2-3   | 2-2   | 0-0   | 42 | 1   |

| PUNT RETURNS   | No. | Yds | Avg  | TD | Long |
|----------------|-----|-----|------|----|------|
| Peterson, Chad | 7   | 55  | 7.9  | 0  | 18   |
| Kubes, Tony    | 4   | 33  | 8.2  | 0  | 9    |
| Williams, Fred | 3   | 58  | 19.3 | 0  | 27   |
| Shoemaker, Eli | 1   | 6   | 6.0  | 0  | 0    |
| Treat, Damon   | 1   | 22  | 22.0 | 0  | 22   |
| Godfredsen, J  | 1   | 10  | 10.0 | 0  | 0    |
| Woods, Miky    | 0   | 3   | 0.0  | 0  | 0    |
| Total.....     | 17  | 187 | 11.0 | 0  | 27   |
| Opponents..... | 15  | 229 | 15.3 | 2  | 48   |

| SCORING        | TD | FGs | Kick | Rush | Rcv | Pass | DXP | Saf | Points |
|----------------|----|-----|------|------|-----|------|-----|-----|--------|
| Williams, Fred | 17 | 0-0 | 0-0  | 0-0  | 0   | 0-0  | 0   | 0   | 102    |

| KICK RETURNS   | No. | Yds | Avg  | TD | Long |
|----------------|-----|-----|------|----|------|
| Williams, Fred | 17  | 187 | 11.0 | 0  | 27   |

The Automated ScoreBook  
 St. Cloud State Individual Season/Career Statistics (as of Nov 16, 2010)  
 All games

| SEASON STATISTICS    |    |        |      |      |       |       |       |      |       |       |      |        | CAREER STATISTICS |      |       |      |      |      |       |       |       |  |  |  |  |
|----------------------|----|--------|------|------|-------|-------|-------|------|-------|-------|------|--------|-------------------|------|-------|------|------|------|-------|-------|-------|--|--|--|--|
| RUSHING              |    |        |      |      |       |       |       |      |       |       |      |        | RUSHING           |      |       |      |      |      |       |       |       |  |  |  |  |
|                      | GP | Att    | Gain | Loss | Net   | Avg   | TD    | Long | Avg/G |       | GP   | Att    | Gain              | Loss | Net   | Avg  | TD   | Long | Avg/G |       |       |  |  |  |  |
| Klaphake, Phillip    | 11 | 119    | 836  | 133  | 703   | 5.9   | 9     | 44   | 63.9  | 11    | 119  | 836    | 133               | 703  | 5.9   | 9    | 44   | 63.9 |       |       |       |  |  |  |  |
| Peterson, Chad       | 9  | 96     | 477  | 2    | 475   | 4.9   | 1     | 42   | 52.8  | 9     | 96   | 477    | 2                 | 475  | 4.9   | 1    | 42   | 52.8 |       |       |       |  |  |  |  |
| Steward, Dante       | 7  | 83     | 412  | 9    | 403   | 4.9   | 1     | 43   | 57.6  | 16    | 154  | 893    | 25                | 868  | 5.6   | 6    | 43   | 54.2 |       |       |       |  |  |  |  |
| Treat, Damon         | 9  | 47     | 391  | 9    | 382   | 8.1   | 3     | 69   | 42.4  | 9     | 47   | 391    | 9                 | 382  | 8.1   | 3    | 69   | 42.4 |       |       |       |  |  |  |  |
| Walker, Mike         | 4  | 33     | 184  | 5    | 179   | 5.4   | 3     | 33   | 44.8  | 4     | 33   | 184    | 5                 | 179  | 5.4   | 3    | 33   | 44.8 |       |       |       |  |  |  |  |
| Folz, Andy           | 6  | 28     | 106  | 8    | 98    | 3.5   | 0     | 26   | 16.3  | 11    | 37   | 128    | 9                 | 119  | 3.2   | 0    | 26   | 10.8 |       |       |       |  |  |  |  |
| Geiss, Brandon       | 1  | 10     | 31   | 0    | 31    | 3.1   | 2     | 6    | 31.0  | 19    | 330  | 1597   | 71                | 1526 | 4.6   | 18   | 43   | 80.3 |       |       |       |  |  |  |  |
| Christopherson, Tate | 2  | 6      | 22   | 4    | 18    | 3.0   | 0     | 8    | 9.0   | 2     | 6    | 22     | 4                 | 18   | 3.0   | 0    | 8    | 9.0  |       |       |       |  |  |  |  |
| Compton, Matt        | 6  | 1      | 13   | 0    | 13    | 13.0  | 0     | 7    | 2.2   | 16    | 2    | 13     | 1                 | 12   | 6.0   | 0    | 7    | 0.8  |       |       |       |  |  |  |  |
| Meade, Brad          | 7  | 9      | 25   | 16   | 9     | 1.0   | 0     | 14   | 1.3   | 10    | 13   | 50     | 27                | 23   | 1.8   | 0    | 14   | 2.3  |       |       |       |  |  |  |  |
| Williams, Fred       | 11 | 1      | 6    | 0    | 6     | 6.0   | 1     | 6    | 0.5   | 42    | 5    | 10     | 14                | -4   | -0.8  | 1    | 6    | -0.1 |       |       |       |  |  |  |  |
| TEAM                 | 10 | 18     | 0    | 94   | -94   | -5.2  | 0     | 0    | -9.4  | 82    | 48   | -24    | 325               | -349 | -7.3  | 0    | 4    | -4.3 |       |       |       |  |  |  |  |
| Total.....           | 11 | 451    | 2503 | 280  | 2223  | 4.9   | 20    | 69   | 202.1 |       |      |        |                   |      |       |      |      |      |       |       |       |  |  |  |  |
| Opponents.....       | 11 | 357    | 1520 | 352  | 1168  | 3.3   | 8     | 29   | 106.2 |       |      |        |                   |      |       |      |      |      |       |       |       |  |  |  |  |
| PASSING              |    |        |      |      |       |       |       |      |       |       |      |        | PASSING           |      |       |      |      |      |       |       |       |  |  |  |  |
|                      | GP | Eff    | Cmp  | Att  | Int   | Pct   | Yds   | TD   | Lng   | Avg/G |      | GP     | Eff               | Att  | Cmp   | Int  | Pct  | Yds  | TD    | Lng   | Avg/G |  |  |  |  |
| Klaphake, Phillip    | 11 | 165.35 | 180  | 274  | 6     | 65.7  | 2490  | 23   | 83    | 226.4 | 11   | 165.35 | 274               | 180  | 6     | 65.7 | 2490 | 23   | 83    | 226.4 |       |  |  |  |  |
| Meade, Brad          | 7  | 8.48   | 3    | 10   | 2     | 30.0  | 22    | 0    | 12    | 3.1   | 10   | 114.72 | 19                | 8    | 2     | 42.1 | 94   | 3    | 37    | 9.4   |       |  |  |  |  |
| TEAM                 | 10 | 51.53  | 2    | 6    | 0     | 33.3  | 13    | 0    | 10    | 1.3   | 82   | 30.92  | 10                | 2    | 0     | 20.0 | 13   | 0    | 10    | 0.2   |       |  |  |  |  |
| Christopherson, Tate | 2  | 92.00  | 1    | 2    | 0     | 50.0  | 10    | 0    | 10    | 5.0   | 2    | 92.00  | 2                 | 1    | 0     | 50.0 | 10   | 0    | 10    | 5.0   |       |  |  |  |  |
| Total.....           | 11 | 157.14 | 186  | 292  | 8     | 63.7  | 2535  | 23   | 83    | 230.5 |      |        |                   |      |       |      |      |      |       |       |       |  |  |  |  |
| Opponents.....       | 11 | 114.35 | 186  | 327  | 20    | 56.9  | 2242  | 12   | 87    | 203.8 |      |        |                   |      |       |      |      |      |       |       |       |  |  |  |  |
| RECEIVING            |    |        |      |      |       |       |       |      |       |       |      |        | RECEIVING         |      |       |      |      |      |       |       |       |  |  |  |  |
|                      | GP | No.    | Yds  | Avg  | TD    | Long  | Avg/G |      | GP    | No.   | Yds  | Avg    | TD                | Long | Avg/G |      |      |      |       |       |       |  |  |  |  |
| Williams, Fred       | 11 | 76     | 1286 | 16.9 | 16    | 83    | 116.9 | 42   | 245   | 3474  | 14.2 | 38     | 83                | 82.7 |       |      |      |      |       |       |       |  |  |  |  |
| Allery, Tyler        | 11 | 24     | 372  | 15.5 | 2     | 75    | 33.8  | 22   | 44    | 659   | 15.0 | 7      | 75                | 30.0 |       |      |      |      |       |       |       |  |  |  |  |
| Dorsett, Ernest      | 11 | 21     | 166  | 7.9  | 0     | 20    | 15.1  | 11   | 21    | 166   | 7.9  | 0      | 20                | 15.1 |       |      |      |      |       |       |       |  |  |  |  |
| Angelloti, Nick      | 9  | 13     | 172  | 13.2 | 2     | 27    | 19.1  | 9    | 13    | 172   | 13.2 | 2      | 27                | 19.1 |       |      |      |      |       |       |       |  |  |  |  |
| Shoemaker, Eli       | 11 | 11     | 110  | 10.0 | 1     | 23    | 10.0  | 11   | 11    | 110   | 10.0 | 1      | 23                | 10.0 |       |      |      |      |       |       |       |  |  |  |  |
| Treat, Damon         | 9  | 7      | 60   | 8.6  | 0     | 25    | 6.7   | 9    | 7     | 60    | 8.6  | 0      | 25                | 6.7  |       |      |      |      |       |       |       |  |  |  |  |
| Henne, Corey         | 11 | 6      | 113  | 18.8 | 2     | 35    | 10.3  | 11   | 6     | 113   | 18.8 | 2      | 35                | 10.3 |       |      |      |      |       |       |       |  |  |  |  |
| Noreen, Seth         | 10 | 5      | 67   | 13.4 | 0     | 22    | 6.7   | 12   | 5     | 67    | 13.4 | 0      | 22                | 5.6  |       |      |      |      |       |       |       |  |  |  |  |
| Steward, Dante       | 7  | 5      | 50   | 10.0 | 0     | 17    | 7.1   | 16   | 5     | 50    | 10.0 | 0      | 17                | 3.1  |       |      |      |      |       |       |       |  |  |  |  |
| Peterson, Chad       | 9  | 5      | 39   | 7.8  | 0     | 13    | 4.3   | 9    | 5     | 39    | 7.8  | 0      | 13                | 4.3  |       |      |      |      |       |       |       |  |  |  |  |
| Walker, Mike         | 4  | 4      | 35   | 8.8  | 0     | 15    | 8.8   | 4    | 4     | 35    | 8.8  | 0      | 15                | 8.8  |       |      |      |      |       |       |       |  |  |  |  |
| Robinson, Renard     | 7  | 3      | 32   | 10.7 | 0     | 15    | 4.6   | 7    | 3     | 32    | 10.7 | 0      | 15                | 4.6  |       |      |      |      |       |       |       |  |  |  |  |
| Geiss, Brandon       | 1  | 3      | 16   | 5.3  | 0     | 12    | 16.0  | 19   | 18    | 169   | 9.4  | 1      | 65                | 8.9  |       |      |      |      |       |       |       |  |  |  |  |
| Pieper, Derek        | 1  | 2      | 22   | 11.0 | 0     | 12    | 22.0  | 1    | 2     | 22    | 11.0 | 0      | 12                | 22.0 |       |      |      |      |       |       |       |  |  |  |  |
| Klaphake, Phillip    | 11 | 1      | -5   | -5.0 | 0     | 0     | -0.5  | 11   | 1     | -5    | -5.0 | 0      | 0                 | -0.5 |       |      |      |      |       |       |       |  |  |  |  |
| Total.....           | 11 | 186    | 2535 | 13.6 | 23    | 83    | 230.5 |      |       |       |      |        |                   |      |       |      |      |      |       |       |       |  |  |  |  |
| Opponents.....       | 11 | 186    | 2242 | 12.1 | 12    | 87    | 203.8 |      |       |       |      |        |                   |      |       |      |      |      |       |       |       |  |  |  |  |
| TOTAL OFFENSE        |    |        |      |      |       |       |       |      |       |       |      |        | TOTAL OFFENSE     |      |       |      |      |      |       |       |       |  |  |  |  |
|                      | G  | Plays  | Rush | Pass | Total | Avg/G |       | G    | Plays | Rush  | Pass | Total  | Avg/G             |      |       |      |      |      |       |       |       |  |  |  |  |
| Klaphake, Phillip    | 11 | 393    | 703  | 2490 | 3193  | 290.3 | 11    | 393  | 703   | 2490  | 3193 | 290.3  |                   |      |       |      |      |      |       |       |       |  |  |  |  |
| Peterson, Chad       | 9  | 96     | 475  | 0    | 475   | 52.8  | 9     | 96   | 475   | 0     | 475  | 52.8   |                   |      |       |      |      |      |       |       |       |  |  |  |  |
| Steward, Dante       | 7  | 83     | 403  | 0    | 403   | 57.6  | 16    | 154  | 868   | 0     | 868  | 54.2   |                   |      |       |      |      |      |       |       |       |  |  |  |  |
| Treat, Damon         | 9  | 47     | 382  | 0    | 382   | 42.4  | 9     | 47   | 382   | 0     | 382  | 42.4   |                   |      |       |      |      |      |       |       |       |  |  |  |  |
| Walker, Mike         | 4  | 33     | 179  | 0    | 179   | 44.8  | 4     | 33   | 179   | 0     | 179  | 44.8   |                   |      |       |      |      |      |       |       |       |  |  |  |  |
| Folz, Andy           | 6  | 28     | 98   | 0    | 98    | 16.3  | 11    | 37   | 119   | 0     | 119  | 10.8   |                   |      |       |      |      |      |       |       |       |  |  |  |  |
| Meade, Brad          | 7  | 19     | 9    | 22   | 31    | 4.4   | 10    | 32   | 23    | 94    | 117  | 11.7   |                   |      |       |      |      |      |       |       |       |  |  |  |  |
| Geiss, Brandon       | 1  | 10     | 31   | 0    | 31    | 31.0  | 19    | 330  | 1526  | 0     | 1526 | 80.3   |                   |      |       |      |      |      |       |       |       |  |  |  |  |
| Christopherson, Tate | 2  | 8      | 18   | 10   | 28    | 14.0  | 2     | 8    | 18    | 10    | 28   | 14.0   |                   |      |       |      |      |      |       |       |       |  |  |  |  |
| Compton, Matt        | 6  | 1      | 13   | 0    | 13    | 2.2   | 16    | 3    | 12    | 22    | 34   | 2.1    |                   |      |       |      |      |      |       |       |       |  |  |  |  |
| Williams, Fred       | 11 | 1      | 6    | 0    | 6     | 0.5   | 42    | 5    | -4    | 0     | -4   | -0.1   |                   |      |       |      |      |      |       |       |       |  |  |  |  |
| TEAM                 | 10 | 24     | -94  | 13   | -81   | -8.1  | 82    | 58   | -349  | 13    | -336 | -4.1   |                   |      |       |      |      |      |       |       |       |  |  |  |  |
| Total.....           | 11 | 743    | 2223 | 2535 | 4758  | 432.5 |       |      |       |       |      |        |                   |      |       |      |      |      |       |       |       |  |  |  |  |
| Opponents.....       | 11 | 684    | 1168 | 2242 | 3410  | 310.0 |       |      |       |       |      |        |                   |      |       |      |      |      |       |       |       |  |  |  |  |

The Automated ScoreBook  
 St. Cloud State Individual Season/Career Statistics (as of Nov 16, 2010)  
 All games

SEASON STATISTICS

CAREER STATISTICS

| SCORING           | ----- PATs ----- |      |       |      |     |      |     |     | TD  | FGs   | Kick | Rush  | Rcv   | Pass | DXP | Saf | Points | TD | FGs | Kick | Rush | Rcv | Pass | DXP | Saf | Points |
|-------------------|------------------|------|-------|------|-----|------|-----|-----|-----|-------|------|-------|-------|------|-----|-----|--------|----|-----|------|------|-----|------|-----|-----|--------|
|                   | TD               | FGs  | Kick  | Rush | Rcv | Pass | DXP | Saf |     |       |      |       |       |      |     |     |        |    |     |      |      |     |      |     |     |        |
| Williams, Fred    | 17               | 0-0  | 0-0   | 0-0  | 0   | 0-0  | 0   | 0   | 102 | ..... | 40   | 0-0   | 0-0   | 0-0  | 0   | 0-0 | 0      | 0  | 240 |      |      |     |      |     |     |        |
| Aldridge, Tyler   | 0                | 8-11 | 47-48 | 0-0  | 0   | 0-0  | 0   | 0   | 71  | ..... | 0    | 15-21 | 50-51 | 0-0  | 0   | 0-0 | 0      | 0  | 95  |      |      |     |      |     |     |        |
| Klaphake, Phillip | 9                | 0-0  | 0-0   | 0-0  | 0   | 0-0  | 0   | 0   | 54  | ..... | 9    | 0-0   | 0-0   | 0-0  | 0   | 0-0 | 0      | 0  | 54  |      |      |     |      |     |     |        |
| Treat, Damon      | 3                | 0-0  | 0-0   | 0-0  | 0   | 0-0  | 0   | 0   | 18  | ..... | 3    | 0-0   | 0-0   | 0-0  | 0   | 0-0 | 0      | 0  | 18  |      |      |     |      |     |     |        |
| Walker, Mike      | 3                | 0-0  | 0-0   | 0-0  | 0   | 0-0  | 0   | 0   | 18  | ..... | 3    | 0-0   | 0-0   | 0-0  | 0   | 0-0 | 0      | 0  | 18  |      |      |     |      |     |     |        |
| Allery, Tyler     | 2                | 0-0  | 0-0   | 0-0  | 0   | 0-0  | 0   | 0   | 12  | ..... | 7    | 0-0   | 0-0   | 0-0  | 0   | 0-0 | 0      | 0  | 42  |      |      |     |      |     |     |        |
| Henne, Corey      | 2                | 0-0  | 0-0   | 0-0  | 0   | 0-0  | 0   | 0   | 12  | ..... | 2    | 0-0   | 0-0   | 0-0  | 0   | 0-0 | 0      | 0  | 12  |      |      |     |      |     |     |        |
| Kubes, Tony       | 2                | 0-0  | 0-0   | 0-0  | 0   | 0-0  | 0   | 0   | 12  | ..... | 3    | 0-0   | 0-0   | 0-0  | 0   | 0-0 | 0      | 0  | 18  |      |      |     |      |     |     |        |
| Angelloti, Nick   | 2                | 0-0  | 0-0   | 0-0  | 0   | 0-0  | 0   | 0   | 12  | ..... | 2    | 0-0   | 0-0   | 0-0  | 0   | 0-0 | 0      | 0  | 12  |      |      |     |      |     |     |        |
| Geiss, Brandon    | 2                | 0-0  | 0-0   | 0-0  | 0   | 0-0  | 0   | 0   | 12  | ..... | 19   | 0-0   | 0-0   | 0-0  | 0   | 0-0 | 0      | 0  | 114 |      |      |     |      |     |     |        |
| Everson, Joe      | 1                | 0-0  | 0-0   | 0-0  | 0   | 0-0  | 0   | 0   | 6   | ..... | 2    | 0-0   | 0-0   | 0-0  | 0   | 0-0 | 0      | 0  | 12  |      |      |     |      |     |     |        |
| Niedfeldt, Tyler  | 1                | 0-0  | 0-0   | 0-0  | 0   | 0-0  | 0   | 0   | 6   | ..... | 2    | 0-0   | 0-0   | 0-0  | 0   | 0-0 | 0      | 0  | 12  |      |      |     |      |     |     |        |
| Peterson, Chad    | 1                | 0-0  | 0-0   | 0-0  | 0   | 0-0  | 0   | 0   | 6   | ..... | 1    | 0-0   | 0-0   | 0-0  | 0   | 0-0 | 0      | 0  | 6   |      |      |     |      |     |     |        |
| Popanda, Josh     | 1                | 0-0  | 0-0   | 0-0  | 0   | 0-0  | 0   | 0   | 6   | ..... | 1    | 0-0   | 0-0   | 0-0  | 0   | 0-0 | 0      | 0  | 6   |      |      |     |      |     |     |        |
| Steward, Dante    | 1                | 0-0  | 0-0   | 0-0  | 0   | 0-0  | 0   | 0   | 6   | ..... | 6    | 0-0   | 0-0   | 0-0  | 0   | 0-0 | 0      | 0  | 36  |      |      |     |      |     |     |        |
| Shoemaker, Eli    | 1                | 0-0  | 0-0   | 0-0  | 0   | 0-0  | 0   | 0   | 6   | ..... | 1    | 0-0   | 0-0   | 0-0  | 0   | 0-0 | 0      | 0  | 6   |      |      |     |      |     |     |        |
| Total.....        | 48               | 8-11 | 47-48 | 0-0  | 0   | 0-0  | 0   | 0   | 359 |       |      |       |       |      |     |     |        |    |     |      |      |     |      |     |     |        |
| Opponents.....    | 24               | 8-12 | 19-22 | 1-1  | 0   | 0-1  | 0   | 1   | 191 |       |      |       |       |      |     |     |        |    |     |      |      |     |      |     |     |        |

| PUNT RETURNS     | No. | Yds | Avg  | TD | Long | No. | Yds | Avg  | TD | Long |
|------------------|-----|-----|------|----|------|-----|-----|------|----|------|
| Peterson, Chad   | 7   | 55  | 7.9  | 0  | 18   | 7   | 55  | 7.9  | 0  | 18   |
| Kubes, Tony      | 4   | 33  | 8.2  | 0  | 9    | 41  | 430 | 10.5 | 0  | 45   |
| Williams, Fred   | 3   | 58  | 19.3 | 0  | 27   | 8   | 75  | 9.4  | 0  | 27   |
| Shoemaker, Eli   | 1   | 6   | 6.0  | 0  | 0    | 1   | 6   | 6.0  | 0  | 0    |
| Treat, Damon     | 1   | 22  | 22.0 | 0  | 22   | 1   | 22  | 22.0 | 0  | 22   |
| Godfredsen, Joel | 1   | 10  | 10.0 | 0  | 0    | 1   | 10  | 10.0 | 0  | 0    |
| Woods, Miky      | 0   | 3   | 0.0  | 0  | 0    | 0   | 3   | 0.0  | 0  | 0    |
| Total.....       | 17  | 187 | 11.0 | 0  | 27   |     |     |      |    |      |
| Opponents.....   | 15  | 229 | 15.3 | 2  | 48   |     |     |      |    |      |

| KICK RETURNS       | No. | Yds | Avg  | TD | Long | No. | Yds  | Avg  | TD | Long |
|--------------------|-----|-----|------|----|------|-----|------|------|----|------|
| Williams, Fred     | 18  | 308 | 17.1 | 0  | 33   | 72  | 1521 | 21.1 | 1  | 85   |
| Peterson, Chad     | 8   | 154 | 19.2 | 0  | 27   | 8   | 154  | 19.2 | 0  | 27   |
| Dorsett, Ernest    | 7   | 103 | 14.7 | 0  | 30   | 7   | 103  | 14.7 | 0  | 30   |
| Treat, Damon       | 2   | 21  | 10.5 | 0  | 16   | 2   | 21   | 10.5 | 0  | 16   |
| MacPherson, Justin | 1   | 0   | 0.0  | 0  | 0    | 1   | 0    | 0.0  | 0  | 0    |
| West, Rashad       | 1   | 0   | 0.0  | 0  | 0    | 1   | 0    | 0.0  | 0  | 0    |
| Popanda, Josh      | 1   | 11  | 11.0 | 0  | 11   | 5   | 63   | 12.6 | 0  | 18   |
| Total.....         | 38  | 597 | 15.7 | 0  | 33   |     |      |      |    |      |
| Opponents.....     | 48  | 869 | 18.1 | 0  | 59   |     |      |      |    |      |

| INTERCEPTIONS    | No. | Yds | Avg  | TD | Long | No. | Yds | Avg  | TD | Long |
|------------------|-----|-----|------|----|------|-----|-----|------|----|------|
| Niedfeldt, Tyler | 6   | 55  | 9.2  | 1  | 32   | 11  | 135 | 12.3 | 2  | 47   |
| Everson, Joe     | 5   | 72  | 14.4 | 1  | 29   | 8   | 127 | 15.9 | 2  | 55   |
| Moro, Jack       | 2   | 0   | 0.0  | 0  | 0    | 2   | 0   | 0.0  | 0  | 0    |
| Kubes, Tony      | 2   | 85  | 42.5 | 1  | 65   | 3   | 139 | 46.3 | 2  | 65   |
| West, Rashad     | 1   | 23  | 23.0 | 0  | 23   | 1   | 23  | 23.0 | 0  | 23   |
| Matthews, Marvin | 1   | 0   | 0.0  | 0  | 0    | 2   | 0   | 0.0  | 0  | 0    |
| Williams, Wade   | 1   | 1   | 1.0  | 0  | 1    | 1   | 1   | 1.0  | 0  | 1    |
| Winandy, Joe     | 1   | 30  | 30.0 | 0  | 30   | 1   | 30  | 30.0 | 0  | 30   |
| Key, Chris       | 1   | 10  | 10.0 | 0  | 10   | 1   | 10  | 10.0 | 0  | 10   |
| Total.....       | 20  | 276 | 13.8 | 3  | 65   |     |     |      |    |      |
| Opponents.....   | 8   | 205 | 25.6 | 1  | 72   |     |     |      |    |      |

| FUMBLE RETURNS | No. | Yds | Avg  | TD | Long | No. | Yds | Avg  | TD | Long |
|----------------|-----|-----|------|----|------|-----|-----|------|----|------|
| Kubes, Tony    | 1   | 20  | 20.0 | 1  | 20   | 1   | 20  | 20.0 | 1  | 20   |
| Popanda, Josh  | 1   | 78  | 78.0 | 1  | 78   | 1   | 78  | 78.0 | 1  | 78   |
| Total.....     | 2   | 98  | 49.0 | 2  | 78   |     |     |      |    |      |
| Opponents..... | 1   | 6   | 6.0  | 1  | 6    |     |     |      |    |      |

The Automated ScoreBook  
 St. Cloud State Individual Season/Career Statistics (as of Nov 16, 2010)  
 All games

SEASON STATISTICS

CAREER STATISTICS

| ALL PURPOSE          | G  | Rush | Rec  | PR  | KOR | IR  | Tot  | Avg/G | G  | Rush | Rec  | PR  | KOR  | IR  | Tot  | Avg/G |
|----------------------|----|------|------|-----|-----|-----|------|-------|----|------|------|-----|------|-----|------|-------|
| Williams, Fred       | 11 | 6    | 1286 | 58  | 308 | 0   | 1658 | 150.7 | 42 | -4   | 3474 | 75  | 1521 | 0   | 5066 | 120.6 |
| Peterson, Chad       | 9  | 475  | 39   | 55  | 154 | 0   | 723  | 80.3  | 9  | 475  | 39   | 55  | 154  | 0   | 723  | 80.3  |
| Klaphake, Phillip    | 11 | 703  | -5   | 0   | 0   | 0   | 698  | 63.5  | 11 | 703  | -5   | 0   | 0    | 0   | 698  | 63.5  |
| Treat, Damon         | 9  | 382  | 60   | 22  | 21  | 0   | 485  | 53.9  | 9  | 382  | 60   | 22  | 21   | 0   | 485  | 53.9  |
| Steward, Dante       | 7  | 403  | 50   | 0   | 0   | 0   | 453  | 64.7  | 16 | 868  | 50   | 0   | 0    | 0   | 918  | 57.4  |
| Allery, Tyler        | 11 | 0    | 372  | 0   | 0   | 0   | 372  | 33.8  | 22 | 0    | 659  | 0   | 0    | 0   | 659  | 30.0  |
| Dorsett, Ernest      | 11 | 0    | 166  | 0   | 103 | 0   | 269  | 24.5  | 11 | 0    | 166  | 0   | 103  | 0   | 269  | 24.5  |
| Walker, Mike         | 4  | 179  | 35   | 0   | 0   | 0   | 214  | 53.5  | 4  | 179  | 35   | 0   | 0    | 0   | 214  | 53.5  |
| Angelloti, Nick      | 9  | 0    | 172  | 0   | 0   | 0   | 172  | 19.1  | 9  | 0    | 172  | 0   | 0    | 0   | 172  | 19.1  |
| Kubes, Tony          | 11 | 0    | 0    | 33  | 0   | 85  | 118  | 10.7  | 29 | 0    | 0    | 430 | 163  | 139 | 732  | 25.2  |
| Shoemaker, Eli       | 11 | 0    | 110  | 6   | 0   | 0   | 116  | 10.5  | 11 | 0    | 110  | 6   | 0    | 0   | 116  | 10.5  |
| Henne, Corey         | 11 | 0    | 113  | 0   | 0   | 0   | 113  | 10.3  | 11 | 0    | 113  | 0   | 0    | 0   | 113  | 10.3  |
| Folz, Andy           | 6  | 98   | 0    | 0   | 0   | 0   | 98   | 16.3  | 11 | 119  | 6    | 0   | 0    | 0   | 125  | 11.4  |
| Everson, Joe         | 10 | 0    | 0    | 0   | 0   | 72  | 72   | 7.2   | 28 | 0    | 0    | 0   | 0    | 127 | 127  | 4.5   |
| Noreen, Seth         | 10 | 0    | 67   | 0   | 0   | 0   | 67   | 6.7   | 12 | 0    | 67   | 0   | 0    | 0   | 67   | 5.6   |
| Niedfeldt, Tyler     | 11 | 0    | 0    | 0   | 0   | 55  | 55   | 5.0   | 30 | 0    | 0    | 0   | 0    | 135 | 135  | 4.5   |
| Geiss, Brandon       | 1  | 31   | 16   | 0   | 0   | 0   | 47   | 47.0  | 19 | 1526 | 169  | 0   | 224  | 0   | 1919 | 101.0 |
| Robinson, Renard     | 7  | 0    | 32   | 0   | 0   | 0   | 32   | 4.6   | 7  | 0    | 32   | 0   | 0    | 0   | 32   | 4.6   |
| Winandy, Joe         | 11 | 0    | 0    | 0   | 0   | 30  | 30   | 2.7   | 32 | 0    | 0    | 0   | 13   | 30  | 43   | 1.3   |
| West, Rashad         | 10 | 0    | 0    | 0   | 0   | 23  | 23   | 2.3   | 10 | 0    | 0    | 0   | 0    | 23  | 23   | 2.3   |
| Pieper, Derek        | 1  | 0    | 22   | 0   | 0   | 0   | 22   | 22.0  | 1  | 0    | 22   | 0   | 0    | 0   | 22   | 22.0  |
| Christopherson, Tate | 2  | 18   | 0    | 0   | 0   | 0   | 18   | 9.0   | 2  | 18   | 0    | 0   | 0    | 0   | 18   | 9.0   |
| Compton, Matt        | 6  | 13   | 0    | 0   | 0   | 0   | 13   | 2.2   | 16 | 12   | 0    | 0   | 0    | 0   | 12   | 0.8   |
| Popanda, Josh        | 11 | 0    | 0    | 0   | 11  | 0   | 11   | 1.0   | 41 | 0    | 0    | 0   | 63   | 0   | 63   | 1.5   |
| Key, Chris           | 11 | 0    | 0    | 0   | 0   | 10  | 10   | 0.9   | 33 | 0    | 0    | 13  | 0    | 10  | 23   | 0.7   |
| Godfredsen, Joel     | 11 | 0    | 0    | 10  | 0   | 0   | 10   | 0.9   | 28 | 0    | 0    | 10  | 0    | 0   | 10   | 0.4   |
| Meade, Brad          | 7  | 9    | 0    | 0   | 0   | 0   | 9    | 1.3   | 10 | 23   | 0    | 0   | 0    | 0   | 23   | 2.3   |
| Woods, Miky          | 7  | 0    | 0    | 3   | 0   | 0   | 3    | 0.4   | 7  | 0    | 0    | 3   | 0    | 0   | 3    | 0.4   |
| Williams, Wade       | 7  | 0    | 0    | 0   | 0   | 1   | 1    | 0.1   | 17 | 0    | 0    | 0   | 0    | 1   | 1    | 0.1   |
| TEAM                 | 10 | -94  | 0    | 0   | 0   | 0   | -94  | -9.4  | 82 | -349 | 0    | 0   | 0    | 0   | -349 | -4.3  |
| Total.....           | 11 | 2223 | 2535 | 187 | 597 | 276 | 5818 | 528.9 |    |      |      |     |      |     |      |       |
| Opponents.....       | 11 | 1168 | 2242 | 229 | 869 | 205 | 4713 | 428.5 |    |      |      |     |      |     |      |       |

| FIELD GOALS     | Att | Good | Long | Blkd | Att | Good | Long | Blkd | Pct. |
|-----------------|-----|------|------|------|-----|------|------|------|------|
| Aldridge, Tyler | 11  | 8    | 42   | 1    | 21  | 15   | 42   | 1    | 71.4 |
| Total.....      | 11  | 8    | 42   | 1    |     |      |      |      |      |
| Opponents.....  | 12  | 8    | 43   | 0    |     |      |      |      |      |

| PUNTING           | No. | Yds  | Avg  | Long | TB | FC | I20 | Blkd | No. | Yds  | Avg  | Long | TB | FC | I20 | Blkd |
|-------------------|-----|------|------|------|----|----|-----|------|-----|------|------|------|----|----|-----|------|
| Aldridge, Tyler   | 34  | 1284 | 37.8 | 63   | 4  | 3  | 7   | 0    | 36  | 1342 | 37.3 | 63   | 4  | 3  | 7   | 0    |
| Compton, Matt     | 12  | 447  | 37.2 | 49   | 1  | 1  | 2   | 1    | 56  | 2031 | 36.3 | 54   | 3  | 14 | 15  | 4    |
| TEAM              | 1   | 0    | 0.0  | 0    | 0  | 0  | 0   | 0    | 22  | 186  | 8.5  | 26   | 0  | 0  | 0   | 1    |
| Klaphake, Phillip | 1   | 31   | 31.0 | 31   | 0  | 0  | 1   | 0    | 1   | 31   | 31.0 | 31   | 0  | 0  | 1   | 0    |
| Total.....        | 48  | 1762 | 36.7 | 63   | 5  | 4  | 10  | 1    |     |      |      |      |    |    |     |      |
| Opponents.....    | 58  | 2085 | 35.9 | 64   | 4  | 12 | 14  | 2    |     |      |      |      |    |    |     |      |

| KICKOFFS        | No. | Yds  | Avg  | TB | OB | Retn | Net  | YdLn | No. | Yds  | Avg  | TB | OB |
|-----------------|-----|------|------|----|----|------|------|------|-----|------|------|----|----|
| Aldridge, Tyler | 67  | 4105 | 61.3 | 13 | 5  |      |      |      | 131 | 7723 | 59.0 | 20 | 11 |
| Total.....      | 67  | 4105 | 61.3 | 13 | 5  | 869  | 44.4 | 25   |     |      |      |    |    |
| Opponents.....  | 41  | 2385 | 58.2 | 2  | 1  | 597  | 42.6 | 27   |     |      |      |    |    |



**Game 1**



St. Cloud State  
at Augustana College  
Sept. 4  
Sioux Falls, S.D.



|                 | 1 | 2  | 3 | 4  | ot | F  |
|-----------------|---|----|---|----|----|----|
| St. Cloud State | 7 | 0  | 6 | 10 | -  | 23 |
| Augustana       | 0 | 14 | 0 | 18 | -  | 32 |

**First Quarter**

SC-Geiss 2-yard run (Aldridge kick): 6 plays, 80 yards, 2:50 TOP (12:10)

**Second Quarter**

AC-Schulte 34-yard pass Hanson (Behrens kick): 8-69, 4:04 TOP (10:39)

AC-Schulte 87-yard pass Hanson (Behrens kick): 2-92, 0:19 TOP (00:45)

**Third Quarter**

SC-Geiss 1-yard run (kick blocked): 10-80, 3:58 TOP (05:50)

**Fourth Quarter**

SC-Aldridge 37-yard field goal: 10-67, 4:34 TOP (14:13)

SC-Williams 60-yard pass Klaphake (Aldridge kick): 3-67, 1:19 TOP (09:43)

AC- Behrens 38-yard field goal: 6-59, 2:02 TOP (07:41)

AC-Clark 1-yard run (Behrens kick): 2-2, 0:33 TOP (05:22)

AC-Clark 2-yard run (Schulte rush): 1-2, 0:03 TOP (02:12)

| Team Statistics         | SCSU    | Augustana |
|-------------------------|---------|-----------|
| First Downs             | 18      | 13        |
| Net Yards Rushing       | 68      | 97        |
| Net Yards Passing       | 319     | 256       |
| Att-Comp-Int            | 24-38-1 | 9-19-0    |
| Total Offense Yards     | 387     | 353       |
| Fumbles: No-Lost        | 1-0     | 2-0       |
| Penalties-Yards         | 6-35    | 4-32      |
| Punt Returns/Yards      | 0-0     | 2-29      |
| Kick Returns/Yards      | 5-101   | 2-24      |
| INT Returns/Yards       | 0-0     | 1-34      |
| Fumble Returns          | 0-0     | 0-0       |
| Time of Poss./Game      | 32:17   | 27:43     |
| 3rd Down Conv.          | 6 of 16 | 5 of 14   |
| 4th Down Conv.          | 0 of 2  | 0 of 0    |
| Red Zone Scores-Chances | 3-3     | 2-3       |
| Sacks By-Yards          | 4-30    | 3-13      |

TOP=time of possession  
(00:00) time of touchdown/field goal

**Game 2**



St. Cloud State  
at Concordia-St. Paul  
Sept. 11  
St. Paul, Minn.



|                 | 1 | 2  | 3 | 4  | ot | F  |
|-----------------|---|----|---|----|----|----|
| St. Cloud State | 7 | 0  | 6 | 10 | -  | 23 |
| Concordia Univ. | 0 | 14 | 0 | 18 | -  | 32 |

**First Quarter**

SC-Allery 75-yard pass Klaphake (Aldridge kick): 3-77, 1:27 TOP (10:18)

SC-Steward 11-yard run (Aldridge kick): 1-20, 0:07 TOP (7:23)

**Second Quarter**

CU-Gilbert 31-yard pass Ohm (King kick): 8-96, 2:53 TOP (12:20)

CU-King 37-yard field goal: 8-73, 3:04 (2:58)

SC-Williams 83-yard pass Klaphake (Aldridge kick): 2-76, 0:45 TOP (2:09)

SC-Williams 5-yard pass Klaphake (Aldridge kick): 6-62, 0:44 TOP (:15)

**Third Quarter**

SC-Allery 6-yard pass Klaphake (Aldridge kick): 9-63, 3:52 TOP (11:00)

| Team Statistics         | SCSU    | Concordia-St. Paul |
|-------------------------|---------|--------------------|
| First Downs             | 21      | 20                 |
| Net Yards Rushing       | 217     | 124                |
| Net Yards Passing       | 301     | 216                |
| Att-Comp-Int            | 14-22-0 | 20-39-3            |
| Total Offense Yards     | 518     | 340                |
| Fumbles: No-Lost        | 2-1     | 1-1                |
| Penalties-Yards         | 9-80    | 8-40               |
| Punt Returns/Yards      | 3-21    | 0-0                |
| Kick Returns/Yards      | 3-62    | 6-119              |
| INT Returns/Yards       | 3-0     | 0-0                |
| Fumble Returns          | 0-0     | 0-0                |
| Time of Poss./Game      | 31:41   | 28:19              |
| 3rd Down Conv.          | 3 of 11 | 3 of 12            |
| 4th Down Conv.          | 0 of 1  | 0 of 0             |
| Red Zone Scores-Chances | 3-4     | 1-3                |
| Sacks By-Yards          | 5-40    | 3-22               |

TOP=time of possession  
(00:00) time of touchdown/field goal

**Game 3**



St. Cloud State  
vs. Winona State  
Sept. 18  
St. Cloud, Minn.



|                 | 1  | 2 | 3  | 4 | ot | F  |
|-----------------|----|---|----|---|----|----|
| Winona State    | 14 | 3 | 7  | 2 | -  | 26 |
| St. Cloud State | 10 | 7 | 14 | 0 | -  | 31 |

**First Quarter**

SC-Williams 54-yard pass Klaphake (Aldridge kick): 3-58, 00:52 (13:04)  
 WS-Jundt 29-yard pass from Aber (Kinney kick): 6-69, 2:26 (10:32)  
 SC-Aldridge 31-yard field goal: 9-66, 3:39 (6:48)  
 WS-Simmons 7-yard run (Kinney kick): 5-57, 1:48 (4:52)

**Second Quarter**

SC-Shoemaker 3-yard pass Klaphake (Aldridge kick): 17-84, 8:23 (6:21)  
 WS-Kinney 27-yard field goal: 8-32, 2:47 (00:34)

**Third Quarter**

SC-Klaphake 4-yard run : 9-56, 3:06 (5:13)  
 SC-Everson 25-yard interception return: (1:27)  
 WS-Hertz 9-yard pass Aber (Kinney kick): 5-67, 1:18 (00:04)

**Fourth Quarter**

WS-Safety (00:19)

| Team Statistics         | SCSU    | Winona State |
|-------------------------|---------|--------------|
| First Downs             | 21      | 18           |
| Net Yards Rushing       | 182     | 83           |
| Net Yards Passing       | 205     | 285          |
| Att-Comp-Int            | 21-15-0 | 37-18-1      |
| Total Offense Yards     | 387     | 368          |
| Fumbles: No-Lost        | 1-0     | 2-1          |
| Penalties-Yards         | 4-35    | 1-5          |
| Punt Returns/Yards      | 2-16    | 0-0          |
| Kick Returns/Yards      | 7-391   | 5-266        |
| INT Returns/Yards/TD    | 1-25-1  | 0-0          |
| Fumble Returns          | 0-0     | 0-0          |
| Time of Poss./Game      | 38:20   | 21:40        |
| 3rd Down Conv.          | 7 of 15 | 4 of 11      |
| 4th Down Conv.          | 0 of 1  | 0 of 1       |
| Red Zone Scores-Chances | 3-4     | 3-5          |
| Sacks By-Yards          | 2-16    | 1-8          |

TOP=time of possession  
 (00:00) time of touchdown/field goal

**Game 4**



St. Cloud State  
vs. U-Mary  
Sept. 25  
St. Cloud, Minn.



|                 | 1 | 2  | 3 | 4  | ot | F  |
|-----------------|---|----|---|----|----|----|
| U-Mary          | 0 | 0  | 0 | 14 | -  | 14 |
| St. Cloud State | 3 | 14 | 3 | 14 | -  | 30 |

**First Quarter**

SC-Aldridge 28-yard field goal: 15-77, 7:09 TOP (3:24)

**Second Quarter**

SC-Angellotti 27-yard pass from Klaphake (Aldridge kick): 5-43, 2:09 (6:52)  
 SC-Klaphake 3-yard run (Aldridge kick): 2-9, 00:56 (4:30)

**Third Quarter**

SC-Aldridge 42-yard field goal: 15-50, 6:41 (8:13)

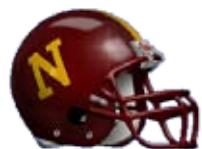
**Fourth Quarter**

SC-Klaphake 11-yard run (Aldridge kick): 8-94, 3:21 (14:45)  
 UM-Oyloe 35-yard interception return (Ryan kick): (12:45)  
 SC-Aldridge 22-yard field goal: 11-61, 6:28 (6:11)  
 UM-Parance 2-yard blocked punt return (Ryan kick): (1:05)

| Team Statistics         | SCSU    | U-Mary  |
|-------------------------|---------|---------|
| First Downs             | 20      | 14      |
| Net Yards Rushing       | 291     | 86      |
| Net Yards Passing       | 112     | 166     |
| Att-Comp-Int            | 20-10-1 | 28-18-1 |
| Total Offense Yards     | 403     | 252     |
| Fumbles: No-Lost        | 0-0     | 1-1     |
| Penalties-Yards         | 6-40    | 2-20    |
| Punt Returns/Yards      | 2-18    | 1-26    |
| Kick Returns/Yards      | 2-43    | 7-100   |
| INT Returns/Yards       | 1-10    | 1-35    |
| Fumble Returns          | 0-0     | 0-0     |
| Time of Poss./Game      | 34:31   | 25:29   |
| 3rd Down Conv.          | 9/16    | 3/11    |
| 4th Down Conv.          | 1/1     | 1/1     |
| Red Zone Scores-Chances | 4/4     | 0/2     |
| Sacks By-Yards          | 2-14    | 1-2     |

TOP=time of possession  
 (00:00) time of touchdown/field goal

**Game 5**



St. Cloud State  
at Northern State  
Oct. 2  
Aberdeen, S.D.



|                 | 1  | 2 | 3 | 4 | ot | F  |
|-----------------|----|---|---|---|----|----|
| St. Cloud State | 28 | 7 | 7 | 0 | -  | 42 |
| Northern State  | 0  | 0 | 3 | 7 | -  | 10 |

**First Quarter**

SC-Williams 4-yard pass Klaphake (Aldridge kick): 5-73, 1:53 TOP (7:37)  
 SC-Williams 6-yard pass Klaphake (Aldridge kick): 5-76, 1:54 (1:42)  
 SC-Kubes 20-yard fumble recovery (Aldridge kick): (1:28)  
 SC-Williams 30-yard pass Klaphake (Aldridge kick): 1-30, :07 (1:13)

**Second Quarter**

SC-Williams 3-yard pass Klaphake (Aldridge kick): 2-23, :24 (1:50)

**Third Quarter**

SC-Klaphake 5-yard run (Aldridge kick): 9-80, 4:50 (4:46)  
 NS-Parrott 43-yard field goal: 9-46, 3:51 (:50)

**Fourth Quarter**

NS-Anderson 3-yard run (Parrott kick): 10-49, 5:48 (8:20)

| Team Statistics         | SCSU    | NSU     |
|-------------------------|---------|---------|
| First Downs             | 16      | 21      |
| Net Yards Rushing       | 185     | 117     |
| Net Yards Passing       | 218     | 192     |
| Att-Comp-Int            | 20-14-0 | 33-21-1 |
| Total Offense Yards     | 403     | 309     |
| Fumbles: No-Lost        | 2-0     | 3-2     |
| Penalties-Yards         | 6-63    | 7-55    |
| Punt Returns/Yards      | 1-18    | 2-28    |
| Kick Returns/Yards      | 3-30    | 7-136   |
| INT Returns/Yards       | 1-29    | 0-0     |
| Fumble Returns          | 1-20-1  | 0-0     |
| Time of Poss./Game      | 25:06   | 34:54   |
| 3rd Down Conv.          | 3 of 9  | 8 of 17 |
| 4th Down Conv.          | 1 of 1  | 2 of 4  |
| Red Zone Scores-Chances | 4-5     | 2-4     |
| Sacks By-Yards          | 4-20    | 0-0     |

TOP=time of possession  
 (00:00) time of touchdown/field goal

**Game 6**



St. Cloud State  
at Minnesota State  
Oct. 9  
Mankato, Minn.



|                 | 1  | 2  | 3 | 4 | ot | F  |
|-----------------|----|----|---|---|----|----|
| St. Cloud State | 10 | 14 | 7 | 0 | -  | 31 |
| Minnesota State | 14 | 0  | 0 | 3 | -  | 17 |

**First Quarter**

MSU-Echols 3-yard run (Brockshus kick): 11-60, 2:06 (9:130)  
 SC-Williams 11-yard pass Klaphake (Aldridge kick): 6-69, 2:06 (7:07)  
 MSU-Carter 80-yard pass Brogan (Brockshus kick): 1-80, :11 (6:56)  
 SC-Aldridge 20-yard field goal:10-61, 4:34 (2:22)

**Second Quarter**

SC-Henne 26-yard pass Klaphake (Aldridge kick):10-65, 4:29 (8:54)  
 SC-Williams 40-yard pass Klaphake (Aldridge kick): 9-95, 3:33 (1:34)

**Third Quarter**

SC-Peterson 2-yard run (Aldridge kick): 1-2, :04 (9:10)

**Fourth Quarter**

MSU-Brockshus 26-yard field goal:12-64, 5:02 (14:52)

| Team Statistics         | SCSU    | MSU     |
|-------------------------|---------|---------|
| First Downs             | 26      | 20      |
| Net Yards Rushing       | 262     | 100     |
| Net Yards Passing       | 205     | 336     |
| Att-Comp-Int            | 28-15-1 | 29-21-3 |
| Total Offense Yards     | 467     | 436     |
| Fumbles: No-Lost        | 1-0     | 2-2     |
| Penalties-Yards         | 6-73    | 6-50    |
| Punt Returns/Yards      | 0-0     | 3-38    |
| Kick Returns/Yards      | 6-386   | 4-228   |
| INT Returns/Yards       | 3-30    | 1-0     |
| Fumble Returns          | 0-0     | 0-0     |
| Time of Poss./Game      | 31:40   | 26:30   |
| 3rd Down Conv.          | 8 of 14 | 3 of 8  |
| 4th Down Conv.          | 0 of 1  | 1 of 2  |
| Red Zone Scores-Chances | 3-3     | 2-4     |
| Sacks By-Yards          | 1-9     | 1-0     |

TOP=time of possession  
 (00:00) time of touchdown/field goal

**Game 7**



St. Cloud State  
vs. Southwest Minn.  
Oct. 16  
St. Cloud, Minn.



|                 | 1  | 2 | 3 | 4 | ot | F  |
|-----------------|----|---|---|---|----|----|
| Southwest Minn. | 0  | 0 | 0 | 6 | -  | 6  |
| St. Cloud State | 14 | 7 | 0 | 3 | -  | 24 |

**First Quarter**

SC-Williams 4-yard pass Klaphake (Aldridge kick): 3-46, :51 (12:21)

SC-Klaphake 33-yard run (Aldridge kick): 5-77, 1:09 (5:48)

**Second Quarter**

SC-Popanda 78-yard fumble recovery (Aldridge kick): (14:35)

**Third Quarter**

No scoring

**Fourth Quarter**

SC-Aldridge 21-yard field goal: 14-86, 5:55 (10:16)

SM-Moore 8-yard pass Ratekin (pass failed): 2-78, :51 (2:36)

| Team Statistics         | SCSU    | SMSU    |
|-------------------------|---------|---------|
| First Downs             | 23      | 15      |
| Net Yards Rushing       | 169     | 76      |
| Net Yards Passing       | 325     | 256     |
| Att-Comp-Int            | 34-25-1 | 40-23-2 |
| Total Offense Yards     | 494     | 332     |
| Fumbles: No-Lost        | 1-0     | 2-2     |
| Penalties-Yards         | 7-52    | 7-37    |
| Punt Returns/Yards      | 3-11    | 0-0     |
| Kick Returns/Yards      | 1-32    | 1-20    |
| INT Returns/Yards       | 2-38    | 1-0     |
| Fumble Returns          | 1-78-1  | 0-0     |
| Time of Poss./Game      | 30:02   | 29:58   |
| 3rd Down Conv.          | 6 of 16 | 6 of 13 |
| 4th Down Conv.          | 1 of 2  | 1 of 2  |
| Red Zone Scores-Chances | 2-4     | 0-2     |
| Sacks By-Yards          | 2-10    | 2-8     |

TOP=time of possession  
(00:00) time of touchdown/field goal

**Game 8**



St. Cloud State  
vs. Minnesota, Crookston  
Oct. 23  
Homecoming  
St. Cloud, Minn.



|                      | 1  | 2  | 3  | 4 | ot | F  |
|----------------------|----|----|----|---|----|----|
| Minnesota, Crookston | 6  | 0  | 0  | 6 | -  | 6  |
| St. Cloud State      | 14 | 21 | 14 | 0 | -  | 49 |

**First Quarter**

MC-Rice 8-yard run (kick failed): 2-9, :44 (10:54)

SC-Klaphake 1-yard run (Aldridge kick): 3-38, :58 (1:37)

SC-Treat 31-yard run (Aldridge kick): 1-31, :08 (00:18)

**Second Quarter**

SC-Walker 4-yard run (Aldridge kick): 6-50, 2:50 (12:03)

SC-Klaphake 6-yard run (Aldridge kick): 4-49, 1:56 (5:47)

SC-Williams 7-yard pass Klaphake (Aldridge kick): 7-72, 3:03 (1:02)

**Third Quarter**

SC-Klaphake 1-yard run (Aldridge kick): 3-67, :50 (14:10)

SC-Niedfeldt 32-yard interception return (Aldridge kick): (12:26)

**Fourth Quarter**

No scoring

| Team Statistics         | SCSU    | UMC     |
|-------------------------|---------|---------|
| First Downs             | 17      | 7       |
| Net Yards Rushing       | 323     | 51      |
| Net Yards Passing       | 136     | 97      |
| Att-Comp-Int            | 19-11-1 | 35-13-5 |
| Total Offense Yards     | 459     | 148     |
| Fumbles: No-Lost        | 4-0     | 5-2     |
| Penalties-Yards         | 4-30    | 3-19    |
| Punt Returns/Yards      | 4-166   | 7-187   |
| Kick Returns/Yards      | 2-6     | 6-51    |
| INT Returns/Yards       | 5-55-1  | 1-72    |
| Fumble Returns          | 0-0     | 0-0     |
| Time of Poss./Game      | 28:34   | 30:27   |
| 3rd Down Conv.          | 3 of 11 | 3 of 14 |
| 4th Down Conv.          | 0 of 3  | 0 of 0  |
| Red Zone Scores-Chances | 5-5     | 1-1     |
| Sacks By-Yards          | 1-5     | 1-4     |

TOP=time of possession  
(00:00) time of touchdown/field goal

**Game 9**



St. Cloud State  
at Minnesota Duluth  
Oct. 30  
Duluth, Minn.



|                  | 1  | 2 | 3  | 4 | ot | F  |
|------------------|----|---|----|---|----|----|
| St. Cloud State  | 7  | 3 | 0  | 7 | -  | 17 |
| Minnesota Duluth | 10 | 3 | 20 | 7 | -  | 40 |

**First Quarter**

UMD-Stinogel 40-yard pass Vogler (Nadeau kick): 8-80, 4:33 (10:27)

UMD-Nadeau 19-yard field goal: 4-3, 1:24 (8:07)

SCS-Klaphake 37-yard run (Aldridge kick): 5-69, 2:09 (5:52)

**Second Quarter**

UMD-Nadeau 36-yard field goal: 12-67, 5:38 (2:44)

SCS-Aldridge 42-yard field goal: 13-60, 2:22 (00:16)

**Third Quarter**

UMD-Winfield 28-yard pass Vogler (kick failed): 9-66, 4:02 (9:24)

UMD-Foss 4-yard run (Nadeau kick): 5-19, 2:42 (5:56)

UMD-Huberty 6-yard fumble recovery: (4:17)

**Fourth Quarter**

SCS-Angellotti 26-yard pass Klaphake (Aldridge kick): 11-89, 4:19 (14:53)

UMD-Vogler 4-yard run (Nadeau kick): 13-89, 6:59 (00:51)

| Team Statistics         | SCSU    | UMD      |
|-------------------------|---------|----------|
| First Downs             | 19      | 21       |
| Net Yards Rushing       | 138     | 206      |
| Net Yards Passing       | 212     | 167      |
| Att-Comp-Int            | 34-20-3 | 20-12-0  |
| Total Offense Yards     | 350     | 373      |
| Fumbles: No-Lost        | 3-2     | 0-0      |
| Penalties-Yards         | 5-31    | 5-27     |
| Punt Returns/Yards      | 2-23    | 2-23     |
| Kick Returns/Yards      | 8-114   | 2-34     |
| INT Returns/Yards       | 0-0     | 3-64     |
| Fumble Returns          | 0-0     | 1-6-1    |
| Time of Poss./Game      | 24:51   | 35:09    |
| 3rd Down Conv.          | 3 of 13 | 11 of 16 |
| 4th Down Conv.          | 2 of 2  | 0 of 0   |
| Red Zone Scores-Chances | 1-2     | 4-4      |
| Sacks By-Yards          | 1-7     | 4-27     |

TOP=time of possession  
(00:00) time of touchdown/field goal

**Game 10**



St. Cloud State  
vs. Bemidji State  
Nov. 6  
St. Cloud, Minn.



|                 | 1 | 2  | 3 | 4  | ot | F  |
|-----------------|---|----|---|----|----|----|
| Bemidji State   | 0 | 0  | 0 | 14 | -  | 14 |
| St. Cloud State | 7 | 21 | 7 | 0  | -  | 35 |

**First Quarter**

SCS-Treat 69-yard run (Aldridge kick): 6-98, 2:54 (8:58)

**Second Quarter**

SCS-Walker 1-yard run (Aldridge kick): 9-80, 4:37 (13:35)

SCS-Williams 34-yard pass Klaphake (Aldridge kick): 6-70, 1:54 (6:42)

SCS-Treat 4-yard run (Aldridge kick): 6-46, 3:04 (2:00)

**Third Quarter**

SCS-Williams 0-yard fumble recovery (Aldridge kick): 7-34, 2:26 (6:51)

**Fourth Quarter**

BSU-Lee 17-yard pass Edholm (Sundby kick): 9-51, 4:08 (14:53)

BSU-Lee 9-yard pass Edholm (Sundby kick): 6-67, 2:15 (1:00)

| Team Statistics         | BSU     | SCSU    |
|-------------------------|---------|---------|
| First Downs             | 13      | 16      |
| Net Yards Rushing       | 177     | 241     |
| Net Yards Passing       | 85      | 167     |
| Att-Comp-Int            | 23-8-0  | 19-10-0 |
| Total Offense Yards     | 262     | 408     |
| Fumbles: No-Lost        | 3-1     | 2-1     |
| Penalties-Yards         | 3-13    | 4-34    |
| Punt Returns/Yards      | 3-28    | 0-0     |
| Kick Returns/Yards      | 2-32    | 2-28    |
| INT Returns/Yards       | 0-0     | 0-0     |
| Fumble Returns          | 0-0     | 0-0     |
| Time of Poss./Game      | 29:40   | 30:20   |
| 3rd Down Conv.          | 2 of 14 | 6 of 12 |
| 4th Down Conv.          | 2 of 4  | 1 of 2  |
| Red Zone Scores-Chances | 2-2     | 3-3     |
| Sacks By-Yards          | 1-3     | 1-6     |

TOP=time of possession  
(00:00) time of touchdown/field goal

**Game 11**

St. Cloud State  
at MSU Moorhead  
Nov.13  
Moorhead, Minn.



|                        | 1         | 2         | 3         | 4        | ot       | F         |
|------------------------|-----------|-----------|-----------|----------|----------|-----------|
| <b>St. Cloud State</b> | <b>14</b> | <b>14</b> | <b>14</b> | <b>0</b> | <b>-</b> | <b>42</b> |
| <b>MSU Moorhead</b>    | <b>9</b>  | <b>0</b>  | <b>7</b>  | <b>0</b> | <b>-</b> | <b>16</b> |

**First Quarter**

SCS-Williams 52-yard pass Klaphake (Aldridge kick): 3-69, 1:04 (13:49)

MSU-Kramer 25-yard field goal: 6-15, 3:08 (10:29)

SCS-Williams 6-yard pass Klaphake (Aldridge kick): 7-66, 3:09 (7:12)

MSU-Scharpf 25-yard pass Koch (Kramer kick): 5-60, 2:20 (4:52)

**Second Quarter**

SCS-Williams 27-yard pass Klaphake (Aldridge kick): 9-65, 3:41 (12:33)

SCS-Henne 1-yard pass Klaphake (Aldridge kick): 8-50, 2:18 (2:57)

**Third Quarter**

SCS-Kubes 65-yard interception return (Aldridge kick): (7:40)

MSU-Hendon 48-yard punt return (Kramer kick): (4:08)

SCS-Walker 3-yard run (Aldridge kick): 6-60, 2:02 (2:06)

| <b>Team Statistics</b>  | <b>SCSU</b> | <b>MSUM</b> |
|-------------------------|-------------|-------------|
| First Downs             | 25          | 14          |
| Net Yards Rushing       | 147         | 51          |
| Net Yards Passing       | 335         | 186         |
| Att-Comp-Int            | 37-28-0     | 34-23-4     |
| Total Offense Yards     | 482         | 237         |
| Fumbles: No-Lost        | 5-2         | 1-0         |
| Penalties-Yards         | 7-148       | 6-44        |
| Punt Returns/Yards      | 3-58        | 2-17-1      |
| Kick Returns/Yards      | 3-40        | 6-146       |
| INT Returns/Yards       | 4-89-1      | 0-0         |
| Fumble Returns          | 0-0         | 0-0         |
| Time of Poss./Game      | 30:05       | 29:55       |
| 3rd Down Conv.          | 5 of 12     | 2 of 13     |
| 4th Down Conv.          | 0 of 2      | 0 of 1      |
| Red Zone Scores-Chances | 3-4         | 1-2         |
| Sacks By-Yards          | 3-22        | 2-14        |

TOP=time of possession

(00:00) time of touchdown/field goal

St. Cloud St. (9 - 2 - 0)

Thru: 11/13/2010 - Week 11

TEAM RANKINGS

151 teams ranked in Division II

14 teams ranked in the Northern Sun Conference

2010 SCHEDULE AND RESULTS

9-2 W-2

Northern Sun Conference Record: 9-1

|                |                        |         |   |
|----------------|------------------------|---------|---|
| Sat 09/04/2010 | @ Augustana (SD)       | 23 - 32 | L |
| Sat 09/11/2010 | @ Concordia-St. Paul * | 35 - 10 | W |
| Sat 09/18/2010 | WINONA ST. *           | 31 - 26 | W |
| Sat 09/25/2010 | MARY                   | 30 - 14 | W |
| Sat 10/02/2010 | @ Northern St.         | 42 - 10 | W |
| Sat 10/09/2010 | @ Minn. St. Mankato    | 31 - 17 | W |
| Sat 10/16/2010 | SOUTHWEST MINN. ST.    | 24 - 6  | W |
| Sat 10/23/2010 | MINN.-CROOKSTON        | 49 - 6  | W |
| Sat 10/30/2010 | @ Minn. Duluth         | 17 - 40 | L |
| Sat 11/06/2010 | BEMIDJI ST.            | 35 - 14 | W |
| Sat 11/13/2010 | @ Minn. St. Moorhead   | 42 - 16 | W |
| Sat 11/20/2010 | HILLSDALE              |         |   |

HOME GAME IN CAPS \* Night Game ^ Neutral Site  
OT Overtime Game

| Category                | National Rank | Actual | National Leader     | Actual | Conf Rank | Northern Sun Conference Leader | Actual |
|-------------------------|---------------|--------|---------------------|--------|-----------|--------------------------------|--------|
| Rushing Offense         | 23            | 202.09 | Lenoir-Rhyne        | 319.55 | 3         | Minn. Duluth                   | 290.64 |
| Passing Offense         | 45            | 230.45 | Tusculum            | 424.82 | 3         | Concordia-St. Paul             | 236.91 |
| Total Offense           | 23            | 432.55 | West Liberty        | 543.80 | 2         | Minn. Duluth                   | 470.00 |
| Scoring Offense         | 34            | 32.64  | Minn. Duluth        | 46.73  | 2         | Minn. Duluth                   | 46.73  |
| Rushing Defense         | 21            | 106.18 | Tex. A&M-Kingsville | 54.00  | 3         | Augustana (SD)                 | 76.36  |
| Pass Efficiency Defense | 47            | 114.37 | Albany St. (GA)     | 87.35  | 5         | Augustana (SD)                 | 92.65  |
| Total Defense           | 35            | 310.00 | Albany St. (GA)     | 205.20 | 5         | Augustana (SD)                 | 243.91 |
| Scoring Defense         | 19            | 17.36  | Albany St. (GA)     | 9.90   | 4         | Minn. Duluth                   | 11.82  |
| Net Punting             | 110           | 29.85  | Pittsburg St.       | 39.91  | 12        | Wayne St. (NE)                 | 37.52  |
| Punt Returns            | 50            | 11.00  | Winona St.          | 18.94  | 4         | Winona St.                     | 18.94  |
| Kickoff Returns         | 148           | 15.71  | Mo. Western St.     | 27.31  | 13        | Minn. Duluth                   | 26.76  |
| Turnover Margin         | 3             | 1.64   | Shepherd            | 1.70   | 1         | St. Cloud St.                  | 1.64   |
| Pass Defense            | 76            | 203.82 | Tuskegee            | 110.90 | 9         | Minn. St. Mankato              | 152.45 |
| Passing Efficiency      | 11            | 157.14 | Minn. Duluth        | 187.19 | 2         | Minn. Duluth                   | 187.19 |
| Sacks                   | T-40          | 2.36   | Harding             | 4.30   | 2         | Concordia-St. Paul             | 3.36   |
| Tackles For Loss        | T-59          | 6.73   | Morehouse           | 12.00  | 3         | Concordia-St. Paul             | 7.91   |
| Sacks Allowed           | 58            | 1.73   | Michigan Tech       | .30    | 6         | Minn. St. Mankato              | .64    |

T=tied at this ranking

PLAYER RANKINGS

Player must have played in 75% of team's games  
Summary of the top 100 national leaders and top 25 conference leaders  
15 categories ranked

| Category                               | Player           | National Rank | Actual | National Leader          | Actual | Conf Rank | Northern Sun Conference Leader | Actual |
|----------------------------------------|------------------|---------------|--------|--------------------------|--------|-----------|--------------------------------|--------|
| Rushing                                | Phillip Klaphake | 89            | 63.91  | Quiteh (Bloomsburg)      | 158.36 | 9         | Simmons (Winona St.)           | 113.82 |
|                                        | Chad Peterson    |               | 52.78  |                          |        | 10        |                                |        |
|                                        | Damon Treat      |               | 42.44  |                          |        | 17        |                                |        |
| Passing Efficiency (Min. 15 Att./Game) | Phillip Klaphake | 5             | 165.35 | Weatherhead (Hillsdale)  | 173.97 | 2         | Vogler (Minn. Duluth)          | 184.12 |
| Total Offense                          | Phillip Klaphake | 20            | 290.27 | Cordell (Tusculum)       | 425.45 | 1         | Klaphake (St. Cloud St.)       | 290.27 |
|                                        | Chad Peterson    |               | 52.78  |                          |        | 25        |                                |        |
| Receptions Per Game                    | Fred Williams    | 22            | 6.91   | Travis (West Liberty)    | 12.60  | 1         | Williams (St. Cloud St.)       | 6.91   |
| Receiving Yards Per Game               | Fred Williams    | 8             | 116.91 | Travis (West Liberty)    | 140.20 | 1         | Williams (St. Cloud St.)       | 116.91 |
|                                        | Tyler Allery     |               | 33.82  |                          |        | 23        |                                |        |
| Interceptions                          | Tyler Niedfeldt  | T-14          | .55    | Robinson (Shepherd)      | .90    | T-1       | Niedfeldt (St. Cloud St.)      | .55    |
|                                        | Joe Everson      | T-25          | .50    |                          |        | 3         |                                |        |
|                                        | Jack Moro        |               | .18    |                          |        | T-20      |                                |        |
|                                        | Tony Kubes       |               | .18    |                          |        | T-20      |                                |        |
| Punting (Min. 3.6 Punts/Game)          |                  |               |        | Accardi (Colorado Mines) | 45.58  |           | Weich (Wayne St. (NE))         | 43.37  |
| Punt Returns (Min. 1.2 Ret./Game)      |                  |               |        | Dewberry (Winona St.)    | 20.42  |           | Dewberry (Winona St.)          | 20.42  |
| Kickoff Returns (Min. 1.2 Ret./Game)   | Fred Williams    |               | 17.11  | McCray (Catawba)         | 32.45  | 14        | Carter (Minn. St. Mankato)     | 30.92  |
| Field Goals                            | Tyler Aldridge   | T-62          | .73    | Rowlands (Tusculum)      | 1.91   | T-5       | Behrens (Augustana (SD))       | 1.36   |
| Scoring                                | Fred Williams    | T-10          | 9.27   | Calhoun (West Liberty)   | 13.50  | 1         | Williams (St. Cloud St.)       | 9.27   |
|                                        | Tyler Aldridge   | 95            | 6.45   |                          |        | 5         |                                |        |
|                                        | Phillip Klaphake |               | 4.91   |                          |        | T-14      |                                |        |
| All-Purpose Runners                    | Fred Williams    | 19            | 150.73 | Washington (Pace)        | 217.00 | 1         | Williams (St. Cloud St.)       | 150.73 |
|                                        | Chad Peterson    |               | 80.33  |                          |        | 18        |                                |        |
| Sacks                                  | Thomas Gruis     |               | .40    | Brisco (Urbana)          | 1.45   | 14        | Moore (Concordia-St. Paul)     | 1.00   |
|                                        | Chris Rupe       |               | .36    |                          |        | T-15      |                                |        |
|                                        | Joel Godfredsen  |               | .32    |                          |        | T-20      |                                |        |
|                                        | Joe Winandy      |               | .27    |                          |        | T-25      |                                |        |
| Tackles                                | Tony Kubes       |               | 6.45   | Loiseau (Merrimack)      | 13.30  | T-24      | Larsen (Minn. St. Moorhead)    | 9.55   |
| Tackles For Loss                       | Josh Popanda     |               | .77    | Brisco (Urbana)          | 2.59   | T-20      | Daniel (Wayne St. (NE))        | 1.59   |
|                                        | Joel Godfredsen  |               | .73    |                          |        | T-23      |                                |        |

T=tied at this ranking



**NEWS RELEASE**

100 Legends Lane • Waco, Texas 76706 • (254) 776-5900 • Fax: (254) 776-3744 • www.afca.com

**FOR IMMEDIATE RELEASE**  
**AFCA CONTACT:**

Vince Thompson, Director of Media Relations

**NOVEMBER 15, 2010**  
 254 754-9900

**MINNESOTA-DULUTH ENDS REGULAR SEASON AT NO. 1 IN AFCA DIVISION II COACHES' POLL**

**WACO, TEX.**— Minnesota-Duluth, who started the 2010 football season at No. 4, ends the regular season in the top spot of the AFCA Division II Coaches' Top 25 Poll. The Bulldogs are 11-0 and received a bye in the first round of the Division II playoffs. No. 2 Abilene Christian (Texas) has an identical 11-0 mark and will also have a first-round bye in the playoffs. No. 3 Northwest Missouri State, No. 4 Texas A&M-Kingsville and No. 5 Albany State (Ga.), who finished the season at 10-0, round out the Top 5.

Losses by three Top 10 teams caused a shakeup in the poll from No. 7 on down. Valdosta State (Ga.), Shepherd (W.Va.) and Nebraska-Kearney all lost this past weekend and dropped at least nine spots to No. 17, No. 18 and No. 19, respectively, allowing No. 7 California (Pa.), No. 8 Central Missouri, No. 9 Augustana and No. 10 Hillsdale (Mich.) to jump into the Top 10.

Twenty of the 24 playoff teams are ranked in the AFCA Division II Coaches' Top 25 Poll, with No. 1 Minnesota-Duluth, No. 2 Abilene Christian, No. 5 Albany State and No. 13 Kutztown (Pa.) earning No. 1 seeds in their respective regions.

**2010 American Football Coaches Association Division II Coaches' Poll – November 15, 2010**

| Rank | School (1st votes)            | Rec. | Pts. | Prev. | Last Week                                | Next Game                                 |
|------|-------------------------------|------|------|-------|------------------------------------------|-------------------------------------------|
| 1.   | Minnesota-Duluth (23)         | 11-0 | 645  | 1     | D. Minnesota St.-Mankato, 45-21          | Nov. 27 vs. Opponent TBD                  |
| 2.   | Abilene Christian (Texas) (3) | 11-0 | 626  | 2     | D. Southwestern Oklahoma St., 47-17      | Nov. 27 vs. Opponent TBD                  |
| 3.   | Northwest Missouri St.        | 9-1  | 595  | 3     | D. Pittsburg St. (Kan.), 22-16           | Nov. 20 vs. Missouri Western St.          |
| 4.   | Texas A&M-Kingsville          | 10-1 | 563  | 4     | D. Southeastern Oklahoma St., 38-24      | Nov. 27 vs. Opponent TBD                  |
| 5.   | Albany St. (Ga.)              | 10-0 | 550  | 5     | Idle                                     | Nov. 27 vs. Opponent TBD                  |
| 6.   | Grand Valley St. (Mich.)      | 10-1 | 524  | 6     | D. Saginaw Valley St. (Mich.), 28-7      | Nov. 20 vs. No. 16 Colorado Mines         |
| 7.   | California (Pa.)              | 10-1 | 491  | 10    | D. Cheyney (Pa.), 57-6                   | Nov. 20 vs. No. 20 Bloomsburg (Pa.)       |
| 8.   | Central Missouri              | 9-2  | 459  | 12    | Idle                                     | Nov. 20 vs. No. 14 West Texas A&M         |
| 9.   | Augustana (S.D.)              | 10-1 | 402  | 14    | D. Upper Iowa, 32-0                      | Nov. 27 vs. Opponent TBD                  |
| 10.  | Hillsdale (Mich.)             | 9-2  | 394  | 13    | D. Tiffin (Ohio), 31-24                  | Nov. 20 at No. 15 St. Cloud State (Minn.) |
| 11.  | Mercyhurst (Pa.)              | 9-2  | 361  | 16    | D. No. 11 Bloomsburg (Pa.), 56-37        | Nov. 27 vs. Opponent TBD                  |
| 12.  | Wayne St. (Mich.)             | 9-2  | 281  | 17    | D. Findlay (Ohio), 44-27                 | Season Complete                           |
| 13.  | Kutztown (Pa.)                | 10-1 | 271  | 20    | D. Gannon (Pa.), 27-24                   | Nov. 27 vs. Opponent TBD                  |
| 14.  | West Texas A&M                | 8-3  | 252  | 19    | D. East Central (Okla.), 52-21           | Nov. 20 at No. 8 Central Missouri         |
| 15.  | St. Cloud State (Minn.)       | 9-2  | 245  | 18    | D. Minnesota St.-Moorhead, 42-16         | Nov. 20 vs. No. 10 Hillsdale (Mich.)      |
| 16.  | Colorado School of Mines      | 9-2  | 244  | 21    | D. No. 8 Nebraska-Kearney, 55-53 3OT     | Nov. 20 at No. 6 Grand Valley St. (Mich.) |
| 17.  | Valdosta St. (Ga.)            | 8-2  | 229  | 7     | Lost to West Alabama, 24-21              | Nov. 20 vs. North Alabama                 |
| 18.  | Shepherd (W.Va.)              | 9-1  | 202  | 9     | Lost to Glenville St. (W.Va.), 28-24     | Nov. 20 vs. No. 25 Shaw (N.C.)            |
| 19.  | Nebraska-Kearney              | 9-2  | 195  | 8     | Lost to No. 21 Colorado Mines, 55-53 3OT | Season Complete                           |
| 20.  | Bloomsburg (Pa.)              | 9-2  | 166  | 11    | Lost to No. 16 Mercyhurst (Pa.), 56-37   | Nov. 20 at No. 7 California (Pa.)         |
| 21.  | Michigan Tech                 | 8-2  | 156  | 22    | D. Northern Michigan, 12-0               | Season Complete                           |
| 22.  | Fort Valley St. (Ga.)         | 8-2  | 96   | 23    | Idle                                     | Regular Season Complete                   |
| 23.  | Morehouse (Ga.)               | 8-2  | 88   | 24    | Idle                                     | Nov. 20 at Wingate (N.C.)                 |
| 24.  | Midwestern St. (Texas)        | 8-3  | 69   | 25    | D. Northeastern St. (Okla.) 28-8         | Dec. 4 vs. Washburn (Kan.)                |
| 25.  | Shaw (N.C.)                   | 9-2  | 61   | NR    | D. Virginia St., 14-7                    | Nov. 20 at No. 18 Shepherd (W.Va.)        |

**Dropped Out:** North Alabama (15).

**Others Receiving Votes:** North Alabama, 55; Wingate (N.C.), 54; Colorado St.-Pueblo, 31; Ashland (Ohio), 29; Tuskegee (Ala.), 20; Central Washington, 18; Missouri Western St., 17; West Virginia Wesleyan, 17; Delta St. (Miss.), 16; Winston-Salem St. (N.C.), 13; Washburn (Kan.), 7; St. Augustine's (N.C.), 4; Chadron St. (Neb.), 3; Humboldt St. (Calif.), 1.

For more information on the AFCA and its programs, log on to the AFCA's website at [www.afca.com](http://www.afca.com).

-(AFCA)-

**D2Football.com Top 25 Poll**  
**November 9, 2010**

| Rank | Team                 | Record | Prev Week |
|------|----------------------|--------|-----------|
| 1    | Minnesota-Duluth     | 10-0   | 1         |
| 2    | Abilene Christian    | 10-0   | 2         |
| 3    | Northwest Missouri   | 8-1    | 3         |
| 4    | Texas A&M-Kingsville | 9-1    | 4         |
| 5    | Valdosta State       | 8-1    | 5         |
| 6    | Albany State         | 10-0   | 6         |
| 7    | Grand Valley         | 9-1    | 10        |
| 8    | Nebraska-Kearney     | 9-1    | 8         |
| 9    | Shepherd             | 9-0    | 12        |
| 10   | Central Missouri     | 9-2    | 7         |
| 11   | Bloomsburg           | 9-1    | 14        |
| 12   | California           | 9-1    | 13        |
| 13   | West Texas A&M       | 7-3    | 11        |
| 14   | Hillsdale            | 8-2    | 17        |
| 15   | North Alabama        | 8-2    | 18        |
| 16   | Augustana            | 9-1    | 9         |
| 17   | Mercyhurst           | 8-2    | 20        |
| 18   | St. Cloud            | 9-2    | 22        |
| 19   | Delta State          | 7-3    | 23        |
| 20   | Wayne State (Mi)     | 8-2    | 24        |
| 21   | Kutztown             | 9-1    | 15        |
| 22   | Midwestern State     | 7-2    | 19        |
| 23   | Morehouse            | 8-2    | NR        |
| 24   | Michigan Tech        | 7-2    | NR        |
| 25   | Colorado Mines       | 8-2    | 16        |