

FY 2009

St. Cloud SU

St Cloud SU

Inst Id 0073

Main Report - College and Campus Totals

Term: 20093

Room Capacity	7,106	Nbr Rooms Used	188
Seats Available in 32-Hour Week	227,392	Rooms * 32 Hours	6,016
Seats Used in One Week	143,320	Hours Used Per Week	7,061
Seat Usage Percent	63%	Hours Usage Percent	117%
$\text{Seat Usage Percent} = (\text{Seats_Used} / \text{Seats_Avail_32_hour_week}) * 100$		$\text{Hours Usage Percent} = (\text{Hours_Used_per_Week} / \text{Rooms_32_Hours}) * 100$	

Totals by Institution

Campus Count	1	Course Count	2,082
Bldg Count	15		
Room Count	188		

Limits:

university owned code

Facility Type: 110, 210

Other owned

Note: You may want to exclude some courses (ex., on-line) in the Results section.

Building List - Collegewide

Definitions

Capc_ind (capacity indicator) = source is FC_ROOMS or class enrollment (when Room Capacity not coded)

Nbr Rooms Used = rooms in use as classroom

Course Count is count of courses held within a given room. If a courses is held in two rooms it is counted as two courses (from the room's point of view, each room holds one course).

This report includes

This report excludes courses with no Bldg Code, courses with no enrollment, courses not in session on 9/30/2008, courses with no begin time. Optionally may exclude "block" courses.

Note: if BLDG_CODE = ??????, then possibly CT_MTG was not coded correctly.

BLDG_C ODE	BLDG_NAME	corrected campus id	FAC TYPE	UNIV OWN COD E	Capc_ind	MULTIPLIE R-UNIQUE-ROOM_cap acy	Seats Used in One Week	Nbr Rooms Used	hours in use per week	Course Count
51B	51 Building	073	110	*O	*FCR	73	1,865	3	94	26
801B	801 Building	073	110	*O	*FCR	74	515	2	25	10
BB	BUSINESS BUILDING	073	110	*O	*FCR	39	378	1	15	4
BH	BROWN HALL	073	110	*O	*FCR	573	9,812	11	338	96
			210	*O	*FCR	357	4,187	12	246	81
CH	Centennial Hall	073	110	*O	*FCR	506	19,875	14	734	210
EB	EDUCATION BUILDING	073	110	*O	*FCR	966	22,205	24	1,061	292
ECC	ENGINEERING & COMPUTING CENTER	073	110	*O	*FCR	464	10,786	13	635	202
			210	*O	*FCR	165	2,332	8	170	71
HAH	HALENBECK HALL	073	110	*O	*FCR	310	5,415	6	198	78
			210	*O	*FCR	15	196	1	15	6
HH	HEADLEY HALL	073	110	*O	*FCR	195	2,079	3	117	42
			210	*O	*FCR	142	1,488	5	77	21
KVAC	KIEHLE VISUAL ARTS CENT	073	210	*O	*FCR	164	3,452	8	382	55
LH	LAWRENCE HALL	073	110	*O	*FCR	30	725	1	40	10
MC	James W Miller Learning Resd	073	110	*O	*FCR	214	3,751	7	214	60

BLDG_C ODE	BLDG_NAME	corrected campus id	FAC TYPE	UNIV OWN COD E	Capc ind	MULTIPLIE R-UNIQUE- ROOM_cap acity	Seats Used in One Week	Nbr Rooms Used	hours in use per week	Course Count
PA	PERFORMING ARTS CENTER	073	110	*O	*FCR	75	469	2	54	15
			210	*O	*FCR	176	2,281	3	140	34
SH	STEWART HALL	073	110	*O	*FCR	1,427	32,004	31	1,389	402
			210	*O	*FCR	204	3,226	6	202	63
WSB	Robert H Wick Science Building	073	110	*O	*FCR	445	10,059	8	508	150
			210	*O	*FCR	492	6,220	19	407	154
Total						7,106	143,320	188	7,061	2,082

FY 2009

SCSU

Room Capacity 7,106
 Seats Available in 32-Hour Week 227,392
 Seats Used in One Week
 Seat Usage Percent 0%

Nbr Rooms Used 188
 Rooms * 32 Hours 6,016
 Hours Used Per Week 7,061
 Hours Usage Percent 117%

Seat Usage Percent = (Seats_Used / Seats_Avail_32_hour_week) * 100

Hours Usage Percent = (Hours_Used_per_Week / Rooms_32_Hours) * 100

Totals by Campus

Bldg Count 15
 Room Count 188

Course Count 2,082

Building and Room List - CAMPUS

073

BLDG_CO DE	BLDG_NAME	corrected campus id	ROOM_NBR2	ROOM_NAME	Capc_ind	MULTIPLIER-UNIQUE-ROOM_capacity	Seats Used in One Week	Nbr Rooms Used	hours in use per week	Course Count
51B	51 Building	073	118		ENR	16	48	1	3	1
			119A		ENR	31	1,105	1	52	15
			119B		ENR	26	712	1	39	10
801B	801 Building	073	E103		FCR	25	309	1	15	6
			E112		FCR	49	206	1	10	4
BB	BUSINESS BL	073	216	Classroom	FCR	39	378	1	15	4
BH	BROWN HALL	073	101	Classroom	FCR	41	308	1	18	5
			102	Laboratory Biology	FCR	30	274	1	18	5
			103	Classroom	FCR	46	629	1	22	6
			104	Classroom	FCR	39	707	1	31	8
			115	Conference	FCR	20	40	1	4	1
			126	Classroom	FCR	44	378	1	22	5
			127	Classroom	FCR	37	1,023	1	63	18
			130	Class Lab-elem Bil	FCR	30	468	1	32	8
			132	Science Ed Curricl	FCR	30	54	1	12	2
			134	Classroom	FCR	43	586	1	33	10
			137	Classroom	FCR	115	4,132	1	40	12
			203	Classroom	FCR	44	209	1	14	4
			232	Classroom	FCR	100	1,684	1	87	26
			235	Class Lab-general	FCR	36	744	1	30	10
			236	Class Lab-general	FCR	36	284	1	12	3
			238	Class Lab-zoology	FCR	30	156	1	6	1
			302	Class Lab	FCR	45	156	1	17	8
305	Class Lab-elem Ch	FCR	24	42	1	6	2			
309	Classroom	FCR	44	116	1	4	1			
344	Class Lab-phy Che	FCR	24	345	1	36	12			
345	Class Lab-general	FCR	24	554	1	26	13			
347	Class Lab-general	FCR	24	534	1	27	9			
348	Class Lab-general	FCR	24	576	1	24	8			

BLDG_CO DE	BLDG_NAME	corrected campus id	ROOM _NBR2	ROOM_NAME	Capc _ind	MULTIPLIE R-UNIQUE- ROOM_ capacity	Seats Used in One Week	Nbr Rooms Used	hours in use per week	Course Count
CH	Centennial Hall	073	107		ENR	23	286	1	25	8
			108		ENR	23	288	1	18	5
			13		ENR	40	1,570	1	58	17
			20		FCR	34	561	1	23	6
			234		ENR	30	1,343	1	53	23
			235		ENR	35	2,004	1	65	18
			24		ENR	40	2,017	1	63	14
			343		ENR	40	1,677	1	58	16
			350		ENR	40	1,479	1	58	17
			352		ENR	40	1,953	1	66	18
			494		ENR	40	1,346	1	54	14
			495		ENR	41	1,725	1	60	17
			496		ENR	40	2,018	1	71	19
			498		ENR	40	1,608	1	62	18
EB	EDUCATION BUILDING	073	A119	Classroom	FCR	72	769	1	30	8
			A122	Classroom	FCR	32	1,025	1	64	15
			A123	Classroom	FCR	24	926	1	60	15
			A128	Classroom C-a128	FCR	32	1,216	1	48	13
			A129		FCR	32	292	1	11	3
			A220	Special Lab-kiva	FCR	30	308	1	22	8
			A226	Classroom	FCR	98	3,041	1	56	16
			A227	Special Lab-projec	FCR	40	666	1	35	9
			A229	Classroom	FCR	54	1,366	1	79	17
			A235	Classroom C-a235	FCR	48	1,376	1	91	25
			A239	Classroom	FCR	40	170	1	10	4
			A240	Classroom	FCR	39	1,217	1	61	17
			B107	Classroom	FCR	36	1,119	1	60	15
			B108	Classroom	FCR	32	1,177	1	46	13
			B110	Classroom	FCR	36	72	1	4	1
			B112	Classroom	FCR	32	1,071	1	50	14
			B113	Methods Classroom	FCR	35	1,007	1	41	10
			B206	Classroom	FCR	40	750	1	50	15
			B207	Classroom	FCR	40	1,261	1	60	17
			B208	Classroom	FCR	40	591	1	31	9
B209	Classroom	FCR	40	552	1	43	11			
B213	Classroom	FCR	40	677	1	26	8			
B214	Classroom	FCR	34	872	1	41	13			
B239	Classroom	FCR	20	684	1	42	16			
ECC	ENGINEERIN G & COMPUTING CENTER	073	102	Terminal Room	FCR	9	200	1	14	7
			108	Classroom	FCR	48	1,419	1	51	15
			110	Classroom	FCR	48	1,116	1	47	13
			112	Classroom	FCR	32	1,114	1	46	9
			115	Classroom	FCR	32	606	1	34	12
			116	Classroom	FCR	32	588	1	57	17
			117	Classroom	FCR	30	1,156	1	43	9
			118	Class Lab	FCR	32	1,010	1	43	13

BLDG_CO DE	BLDG_NAME	corrected campus id	ROOM _NBR2	ROOM_NAME	Capc _ind	MULTIPLIE R-UNIQUE- ROOM_cap capacity	Seats Used in One Week	Nbr Rooms Used	hours in use per week	Course Count
			119	Computer Lab Mfg	FCR	19	224	1	22	11
			120	Class Lab	FCR	32	636	1	44	14
			121	Class Lab Mfg Eng	FCR	30	793	1	47	23
			126	Classroom	FCR	36	407	1	40	15
			127	Ee/csci/genprp Co	FCR	10	804	1	62	25
			128	Classroom	FCR	40	480	1	44	15
			130	Classroom	FCR	40	828	1	74	19
			135	Classroom	FCR	32	633	1	65	28
			136	Classroom	FCR	28	832	1	56	17
			179A	Engineering	FCR	15	30	1	2	1
			179B	Engineering	FCR	18	42	1	4	2
			203	Linear Electronics	FCR	26	163	1	7	5
			216	Digital Electronics	FCR	40	37	1	3	3
HAH	HALENBECK HALL	073	302	Study Room	FCR	15	196	1	15	6
			335	Classroom	FCR	50	958	1	42	15
			344	Classroom	FCR	50	1,448	1	45	17
			345	Classroom	FCR	50	813	1	42	18
			346	Classroom	FCR	40	637	1	21	9
			347	Classroom	FCR	80	651	1	30	11
			348	Classroom	FCR	40	908	1	18	8
HH	HEADLEY HALL	073	115	Environmental Lab	FCR	12	170	1	11	3
			116	Class Lab-photo T	FCR	36	669	1	31	9
			212	Class Lab-drawing	FCR	25	144	1	6	1
			214	Classroom	FCR	48	802	1	50	22
			215	Classroom	FCR	37	517	1	32	9
			225	Classroom	FCR	33	407	1	22	6
			227B	Class Lab Electror	FCR	36	98	1	7	2
			230	Classroom	FCR	110	760	1	35	11
KVAC	KIEHLE VISUAL ARTS CENTER	073	104	Class Lab-jewelry	FCR	22	684	1	74	10
			106	Class Lab-graphic	FCR	22	424	1	20	3
			202	Class Lab-print Ma	FCR	20	368	1	48	6
			206	Class Lab-drawing	FCR	20	1,154	1	78	11
			209	Class Lab-painting	FCR	20	282	1	66	9
			G02	Class Lab-ceramic	FCR	20	204	1	48	8
			G04	Class Lab-sculptur	FCR	20	204	1	42	7
			G07	Class Lab-glass W	FCR	20	132	1	6	1
LH	LAWRENCE H	073	G18		FCR	30	725	1	40	10
MC	James W Miller Learning Resource Ctr	073	102		FCR	40	684	1	35	9
			18		ENR	14	84	1	6	1
			206		FCR	32	892	1	37	10
			207		FCR	30	744	1	26	7
			B17		FCR	44	232	1	27	10
			B18		FCR	22	200	1	29	9
			B31		FCR	32	915	1	54	14
PA	PERFORMIN G ARTS CENTER	073	101	Classroom	FCR	45	368	1	40	10
			113	Instrumental Rehe	FCR	60	491	1	59	15

BLDG_CO DE	BLDG_NAME	corrected campus id	ROOM _NBR2	ROOM_NAME	Capc _ind	MULTIPLIE R-UNIQUE- ROOM_cap capacity	Seats Used in One Week	Nbr Rooms Used	hours in use per week	Course Count
			127	Chorus Rehearsal	FCR	60	871	1	37	9
			221	Classroom	FCR	56	919	1	44	10
			271	Classroom	FCR	30	101	1	14	5
SH	STEWART HALL	073	102	Classroom	FCR	35	1,320	1	50	15
			104	Classroom	FCR	40	814	1	63	13
			106	Classroom	FCR	40	485	1	29	8
			108	Classroom	FCR	122	1,712	1	27	7
			109	Classroom	FCR	44	72	1	13	4
			110	Classroom	FCR	45	422	1	27	7
			114	Classroom	FCR	50	1,149	1	49	14
			115	Classroom	FCR	32	681	1	53	17
			120	Classroom	FCR	91	905	1	48	14
			122	Classroom	FCR	24	910	1	50	13
			202	Seminar Room	FCR	38	272	1	26	14
			203	Classroom	FCR	48	728	1	44	13
			204	Classroom	FCR	35	1,592	1	53	15
			207	Classroom	FCR	44	1,303	1	50	15
			208	Classroom	FCR	45	1,083	1	70	21
			209	Classroom	FCR	38	854	1	31	9
			210	Classroom	FCR	64	1,118	1	47	14
			211	Seminar	ENR	10	62	1	8	3
			212	Classroom	FCR	39	742	1	35	12
			214	Classroom	FCR	31	619	1	37	11
			219	Classroom	FCR	55	1,374	1	61	17
			220	Classroom	FCR	50	2,420	1	56	16
			223	Classroom	FCR	36	599	1	31	9
			225	Classroom	FCR	35	624	1	69	21
			228	Classroom	FCR	33	404	1	24	7
			301	Classroom	FCR	36	1,352	1	60	18
			302	Classroom	FCR	40	801	1	24	7
			305	Classroom	FCR	24	539	1	36	10
			306	Computer Lab Ws	FCR	32	461	1	38	11
			307	Classroom	FCR	30	510	1	35	10
			308	Classroom Labora	FCR	70	867	1	29	8
			309	Laboratory Cartogl	FCR	30	654	1	51	14
			322	Classroom	FCR	75	3,304	1	53	17
			323	Classroom	FCR	84	1,601	1	40	12
			325	Classroom	FCR	28	976	1	71	19
			327	Classroom	FCR	30	891	1	56	17
			331	Classroom	FCR	28	1,010	1	47	13
WSB	Robert H Wick Science Building	073	102	Classroom	FCR	31	795	1	39	11
			107	Class Lab Oral Intf	FCR	27	1,217	1	47	14
			110	Classroom	FCR	40	945	1	48	15
			114	Classroom	FCR	40	1,323	1	63	18
			115	Classroom	FCR	40	1,517	1	80	24
			119	Classroom	FCR	50	852	1	58	16

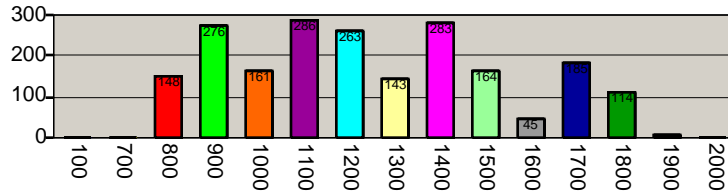
BLDG_CO DE	BLDG_NAME	corrected campus id	ROOM _NBR2	ROOM_NAME	Capc _ind	MULTIPLIE R-UNIQUE- ROOM_cap acity	Seats Used in One Week	Nbr Rooms Used	hours in use per week	Course Count
			122	Classroom	FCR	56	763	1	38	14
			124	Classroom	FCR	90	1,748	1	85	25
			125	Classroom	FCR	98	2,116	1	97	27
			16	Class Lab-general	FCR	24	476	1	22	11
			203	Class Lab-botany	FCR	30	342	1	14	7
			21	Class Lab-geology	FCR	24	489	1	35	14
			212	Class Lab-plant Ta	FCR	24	196	1	22	5
			24	Class Lab-planetar	FCR	62	187	1	14	6
			244	Class Lab-parasitic	FCR	30	285	1	32	14
			245	Class Lab-genetics	FCR	30	306	1	14	7
			250	Class Lab-microbic	FCR	26	412	1	24	10
			284	Class Lab-physiolc	FCR	24	225	1	21	5
			287	Class Lab-anatom	FCR	24	93	1	18	4
			301	Class Lab-electron	FCR	7	22	1	2	1
			302	Class Lab-general	FCR	20	380	1	22	12
			303	Class Lab-general	FCR	20	228	1	14	7
			305	Class Lab-general	FCR	20	383	1	19	11
			337	Class Lab-analytic	FCR	24	177	1	18	6
			382	Class Lab-organic	FCR	34	558	1	30	10
			56	Weather Forcastin	FCR	18	121	1	15	5
			65	Class Lab-aquatic	FCR	24	123	1	24	5
Total						7,106	143,320	188	7,061	2,082

073

SCSU

(a) Courses by Starting Hour

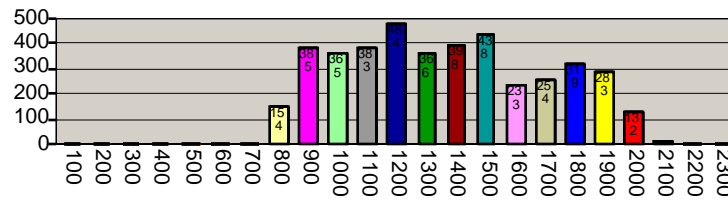
Total count uniquecourse



Starting Hour of Course

(b) Hours/Courses When Bldg/Room is in Use by Hours in Session

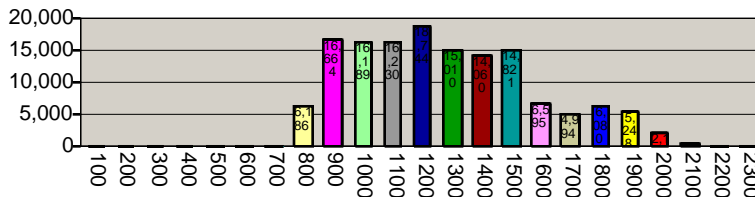
Count Unique Course Room



CLASS_INCL_HOUR

(c) Seats Occupied Weekly Total by Hours in Session

Total Seats



CLASS_INCL_HOUR