



*"We have a responsibility to look after our planet. It is our only home".
The Dalai Lama*

Inside This Issue

- Take a look at summer and fall course schedules ...Page 2
- Introducing the new Social Responsibility Club. Page 3
- Check out upcoming events on campus Page4

Interested in the SR program?
EB-A139 or EB-118
St. Cloud State University
720 Fourth Avenue South
St. Cloud, Minnesota 56301
(320) 308-3124

Contact Us!
Dr. Julie Andrzejewski
Co-Coodinator
jrandrzejewski@stcloudstate.edu

Dr. Jiping Zuo
Co-Coordinator
jzuo@stcloudstate.edu

Chief Editor
Eunice Adjei-Bosompem

Carmelle Adams-Case is the recipient of the St. Cloud State University Distinguished Masters Thesis Award for her thesis titled "Including (and Excluding) the Heterosexual 'Ally' in Lesbian, Gay, Bisexual, Transgender Identity Movements." Each year the department of Graduate Studies recognizes one outstanding thesis at St. Cloud State completed during the last academic year based on thesis originality, importance of the research and potential for significant contribution to the field.

Adams-Case's thesis was original research gathered through observation and theory that problematizes the inclusion of heterosexual "allies" in LGBT organizing and activism. Dissension regarding the addition of allies to the LGBT social movement divides organizers, suggesting heterosexual inclusion is an act of bureaucratic means to expand membership, budgets, and resources. LGBT statewide, regional, and national conferences were attended from September 2006 through March 2008 to gather participants' perspectives. Data was also collected through participant observation at local student organization meetings.

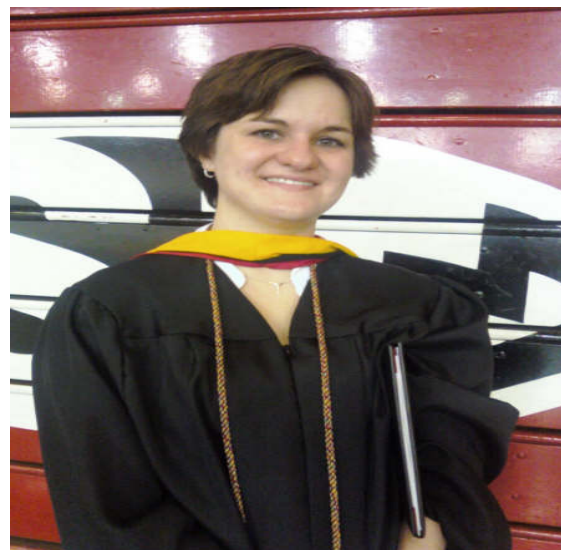
Results confirmed opposition among the movement's participants as well as ideological incongruence regarding heterosexual ally inclusion. The discourse and interconnectivity between varying social movement organizations implied the bureaucratization of activist goals and the absence of a material critique of capitalism and its inherent inequalities. Repercussions of the project's findings suggest that sexual and gender liberation is unlikely, with or without participations of heterosexual allies, when analysis of capitalism is absent.

Thesis chairperson was Dr. Stephen Philion of the Department of Sociology and Anthropology. Thesis committee members included Dr. Jiping Zuo, Dr. Linda Butenhoff, and Dr. Lindah Mhando.

Adams-Case currently resides in Cheyenne, Wyoming with her spouse and three-month-old daughter. She is employed by the State of Wyoming Department of Family Services as a child protection caseworker.



Carmelle Adams



Congratulations to Spring 2009 Social Responsibility Graduates!

Rebecca Jeyachadran

Eunice Adjei-Bosompem



Congratulations to you!

Social Responsibility Program Course Offering for Full Summer Session: June 09-July 11 2009

Course No.	Sec.	Course Title	Instructor	Days	Time	Credit
Soc 562	01	Gender and Violence	Scheel-Keita	Online		3
Hurl 502	01	Film & Soc Chng Mid East	Slisli	TW	12:30-4:30pm.	3
Hurl 630	01	Tching Soc Jstc Non-V&Env	Andrzejewski	MTWR	0800-12:30pm	3

Social Responsibility Program Course Offering for Fall 2009

Course No.	Sec.	Course Title	Instructor	Days	Time	Credit
Soc 512	01	Self and Society	Greider	T	5:00-7:40pm	3
Soc 556	01	Complex Organizations	Mehdi	R	5:00p.m. -7:45p.m.	3
Soc 572	01	Sociology of family	Zuo	TR	3:30p.m. -4:45p.m.	3
Soc 582	02	Global politics of food	Ore	M	5:00-7:40pm	3
Soc 684	01	Sociology of Social Respons.	Scheel-Keita	T	5:00p.m. -7:40p.m.	3
Soc 685	01	Sociological Theory	Philion	W	6:00p.m. -8:45p.m.	3
Hurl 518	01	Xenophobia	Tademe	T	5:00p.m. -7:40p.m.	3
Hurl 591	01	Change Agent Skill	Tademe	MW	5p.m. -7:40p.m.	3
Hurl 592	02	Pract. in Social Empowe	Tademe	MW	7:40p.m. -8:30p.m.	1
Hurl 630	01	Global Social Resp.	Andrzejwwski	W	3:00-4:40pm	2
WS 505	01	Women of Color in US	Mumbi	T	5p.m. - 7:40p.m.	3

Introducing the Social Responsibility Club by: Vice President Neil Pachimatia

The Social Responsibility Club (SRC) was founded in Spring 2009. The club works to promote awareness and action on social and environmental justice issues on campus at St. Cloud State University and beyond to the local community. Some of the issues that the club is passionate about are the world food and fresh water crisis, street children in the global south, global poverty and debt relief, genocide, animal rights, free and open immigration, LGBTQ equality, global warming and women's rights. The Social Responsibility Club strongly believes that social change begins with individual effort, and translates into broader benefit with collective action.

In the Spring 2009 semester, the club conducted a semester-long awareness campaign on the global fresh water crisis. Kicking off with a campus-wide boycott of bottled water, the campaign then teamed up with Minneapolis based organization, Think Outside the Bottle MN to collect signatures for a petition to the state governor that would channel more tax payer money to improving public water works in the state. The campaign then conducted a 'water audit' of water fountains on

campus at SCSU and submitted a proposal to the university to improve the accessibility of clean and reliable drinking water to the campus community. These events were all featured regularly in campus media and in news syndicates nationally – thereby giving credit to the far reaching messages of the club's efforts. To learn more about the club, or to join, please e-mail socialresponsibilityclub@gmail.com



Workers' Democracy in China's Transition from State Socialism published by Routledge, 2009

"This fascinating book is among the first to examine state workers' protests against privatization in China. Dr. Phillion discusses how Chinese state enterprise workers have engaged a discourse of 'workers democracy' in the process of struggle with the new social relations of work that are engendered by privatization oriented policies in China today. By the 1990s, this discourse was being deployed by the state in an effort to minimize the social obligations of the Party and enterprise to state workers and to win the latter over to faith in markets. The discourse has proven, however, to be more than a 'mere' ideology deployed by the state and enterprise managers. Dr. Phillion reveals that Chinese workers have recently engaged this discourse in order to do something they never envisioned having to do: fight for what Chinese state socialism had always promised them as the 'masters of the factory', namely the right to a job and basic social security."

Web page from the Routledge Website:

<http://www.routledgeasianstudies.com/books/Workers-Democracy-in-Chinas-Transition-from-State-Socialism-isbn9780415962063>



*Author Dr. Stephen Phillion
Sociology Professor*



Excellence in Leadership Award Receptient: Chrispina Lekule

Chrispina Lekule graduated from St. Cloud State University in the social responsibility program in May 2008. She was among the 22 students selected to receive the Excellence in Leadership Award for the academic year 2009.

Feminist Pedagogy and Engaged Practices of Embodied Learning (WS 630)

By: Beth Berila

Much community activism and organizational leadership requires motivating people to bring their knowledge and skills to the table in order to successfully complete a collective project. Similarly, much feminist teaching involves helping students learn material while finding a place for their own unique voices. These themes inform the summer graduate class I am offering, WS 630: Feminist Pedagogy and Engaged Practices of Embodied Learning (Course ID #000988, Summer Session I, MW 1700-2100). It is designed for graduate students who want to teach and for people who are community or organizational leaders.

This class will focus on prominent theories of feminist and critical pedagogy as they inform embodied learning processes. We will read work by scholars such as bell hooks, Paulo Freire, Augusto Boal, Patty Lather, Elizabeth Ellsworth, Jennifer Gore, Beverly Tatum, Chandra Talpade Mohanty. The course will address collaborative and collective learning

processes, links between systems of oppression and modes of learning, practices for effective listening and speaking, and integrative learning. Much of the course will focus on critical analysis of these pedagogical issues as well as discussions designed to generate practical strategies for putting these ideas into practice in a variety of educational, community organizing, professional, and personal settings.

Early in the semester, students will be asked to share with the class a particular project as a context for the theories we study. Throughout the class, students will then work with one another to develop concrete ways to apply the theories to that context. The class will therefore help students explore how teaching and learning are performative and embodied practices.

ST. CLOUD STATE UNIVERSITY
MASTER OF SCIENCE IN SOCIAL RESPONSIBILITY
EBB 118/SH 262
720 FOURTH AVENUE SOUTH
ST. CLOUD, MN 56301-4498

NON-PROFIT ORG
U.S. POSTAGE
PAID
St. Cloud, Minn.
Permit No. 460

Upcoming events

For more information,
please call (320) 308-2113

*** Women Unplugged: Awake Your Power
Wednesdays from noon to 1:00pm in Atwood
Theater. Atwood Memorial Center

April 22
Outside the Box: Affecting Change in Unexpected Places,
Spaces and Faces.
Presenter: Tara Jensen
It's been said over and over again, that not everyone is
cut for taking to the streets to promote social change.
Although we support visible, old-fashioned protest marches,
we acknowledge and value multiple strategies for en-
couraging our series by highlighting the work of a woman
who is exhibiting feminist leadership in creative ways.



ST. CLOUD STATE UNIVERSITY
A tradition of excellence and opportunity